



F-Series All Stainless Steel Pneumatic Cylinders - 1-1/2 inch Bore

1-1/2 in. Bore, Double-acting, Front Nose Mount



NITRA pneumatic stainless steel round body, interchangeable, non-repairable cylinder, 1-1/2 inch bore, 1/8 inch female NPT ports, double acting, front nose mount.

All Stainless Steel Cylinder 1-1/2 in. bore, double acting, front nose mount				
Part Number	Stroke Length (in.)	Weight (lbs)	Price	Drawing Link
F24010DN	1.0	1.2	\$136.00	PDF
F24015DN	1.5	1.2	\$138.00	PDF
F24020DN	2.0	1.4	\$141.00	PDF
F24030DN	3.0	1.4	\$144.00	PDF
F24040DN	4.0	1.5	\$147.00	PDF
F24050DN	5.0	1.6	\$151.00	PDF
F24060DN	6.0	1.8	\$156.00	PDF
F24080DN	8.0	2.0	\$163.00	PDF
F24100DN	10.0	2.3	\$169.00	PDF
F24120DN	12.0	2.5	\$178.00	PDF
Specifications				
300 series stainless steel cylinder body		1.7 sq. in. piston area		
Rod diameter 7/16 in.		Rod thread 7/16-20		
300 series stainless steel end caps		Pre-lubricated for maintenance-free life		
300 series stainless steel piston rod		Pressure rating 250 psi		
Low friction Buna-N seals		Temperature range -20°F to 200°F (-28 to 93°C)		
Extend force at 100 psi = 170.0 lb.		Retract force at 100 psi = 155.0 lb.		

Mount Style	Bracket	Nut
Front Nose Mount	FMB-7	FN-34-16
Rear Pivot Mount	-	-
Double End Mount	Front	-
	Rear	-

Cylinder rod clevis FRC-716-20

See end of F-series section for Accessories



F-Series All Stainless Steel Pneumatic Cylinders - 1-1/2 inch Bore

1-1/2 in. Bore, Double-acting, Double End Mount



NITRA pneumatic stainless steel round body, interchangeable, non-repairable cylinder, 1-1/2 inch bore, 1/8 inch female NPT ports, double acting, double end mount.

All Stainless Steel Cylinder 1-1/2 in. bore, double acting, double end mount				
Part Number	Stroke Length (in.)	Weight (lbs)	Price	Drawing Link
F24010DD	1.0	1.2	\$157.00	PDF
F24020DD	2.0	1.4	\$161.00	PDF
F24030DD	3.0	1.5	\$165.00	PDF
F24040DD	4.0	1.7	\$168.00	PDF
F24050DD	5.0	1.7	\$172.00	PDF
F24060DD	6.0	1.8	\$175.00	PDF
F24080DD	8.0	2.1	\$183.00	PDF
F24100DD	10.0	2.3	\$190.00	PDF
F24120DD	12.0	2.6	\$198.00	PDF
Specifications				
300 series stainless steel cylinder body		1.7 sq. in. piston area		
Rod diameter 7/16 in.		Rod thread 7/16-20		
300 series stainless steel end caps		Pre-lubricated for maintenance-free life		
300 series stainless steel piston rod		Pressure rating 250 psi		
Low friction Buna-N seals		Temperature range -20°F to 200°F (-28 to 93°C)		
Extend force at 100 psi = 170.0 lb.		Retract force at 100 psi = 155.0 lb.		

Mount Style	Bracket	Nut
Front Nose Mount	FMB-7	FN-34-16
Rear Pivot Mount	FPBP-3	-
Double End Mount	Front	FMB-7 FN-34-16
	Rear	FMB-7 FN-34-16

Cylinder rod clevis [FRC-716-20](#)
See end of F-series section for Accessories



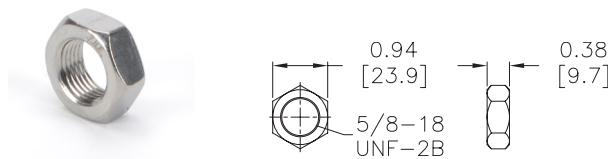
F-Series All Stainless Steel Pneumatic Cylinder Accessories

F-Series All Stainless Steel Pneumatic Cylinder Accessories				
Part Number	Description	Pcs/Pkg	Wt (lb)	Price
FN-58-18	Cylinder mounting nut with 5/8-18 UNF-2B threads, stainless steel, used to mount 3/4 and 1-1/16 inch bore NITRA F-series round body air cylinders	1	0.1	\$3.50
FN-34-16	Cylinder mounting nut with 3/4-16 UNF-2B threads, stainless steel, used to mount 1-1/2 inch bore NITRA F-series round body air cylinders	1	0.1	\$4.50
FN-114-12	Cylinder mounting nut with 1-1/4-12 UNF-2B threads, stainless steel, used to mount 2 inch bore NITRA F-series round body air cylinders	1	0.3	\$11.00
FMB-6	Cylinder mounting bracket, stainless steel, used to mount 3/4 and 1-1/16 inch bore NITRA F-series round body air cylinders	1	0.1	\$10.00
FMB-7	Cylinder mounting bracket, stainless steel, used to mount 1-1/2 inch bore NITRA F-series round body air cylinders	1	0.2	\$30.50
FMB-11	Cylinder mounting bracket, stainless steel, used to mount 2 inch bore NITRA F-series round body air cylinders	1	0.5	\$44.00
FPBP-2	Cylinder pivot mounting bracket with pivot pin, stainless steel, used to mount 3/4 and 1-1/16 inch bore NITRA F-series round body air cylinders	1	0.1	\$28.00
FPBP-3	Cylinder pivot mounting bracket with pivot pin, stainless steel, used to mount 1-1/2 inch bore NITRA F-series round body air cylinders	1	0.2	\$35.00
FPBP-4	Cylinder pivot mounting bracket with pivot pin, stainless steel, used to mount 2 inch bore NITRA F-series round body air cylinders	1	0.3	\$43.00
FRC-14-28	Cylinder rod clevis and hex nut, stainless steel, 1/4-28 thread, for use with 3/4 inch bore NITRA F-series round body air cylinders	1	0.1	\$36.00
FRC-516-24	Cylinder rod clevis and hex nut, stainless steel, 5/16-24 thread, for use with 1-1/16 inch bore NITRA F-series round body air cylinders	1	0.1	\$40.50
FRC-716-20	Cylinder rod clevis and hex nut, stainless steel, 7/16-20 thread, for use with 1-1/2 inch bore NITRA F-series round body air cylinders	1	0.2	\$50.00
FRC-12-20	Cylinder rod clevis and hex nut, stainless steel, 1/2-20 thread, for use with 2 inch bore NITRA F-series round body air cylinders	1	0.2	\$59.00

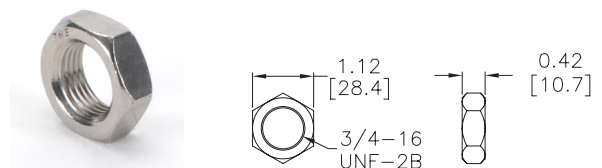
Dimensions

inches [mm]

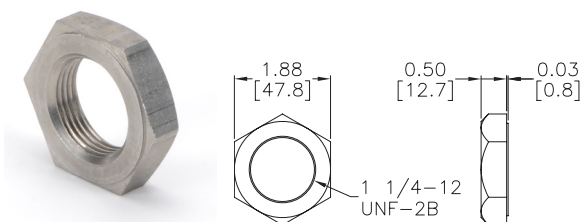
FN-58-18



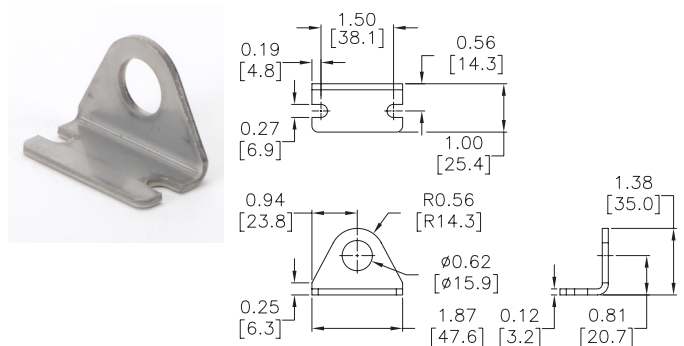
FN-34-16



FN-114-12



FMB-6



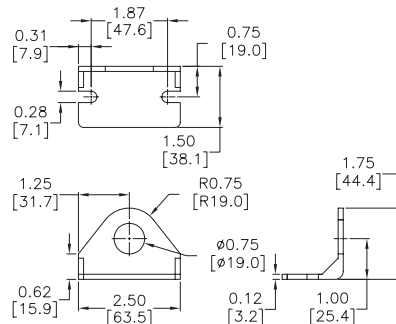


F-Series All Stainless Steel Pneumatic Cylinder Accessories

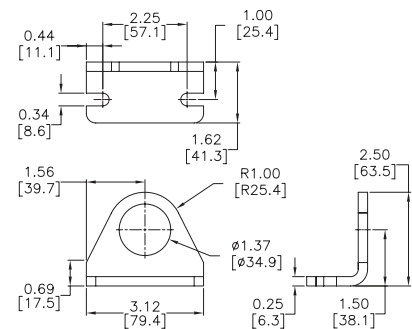
Dimensions

inches [mm]

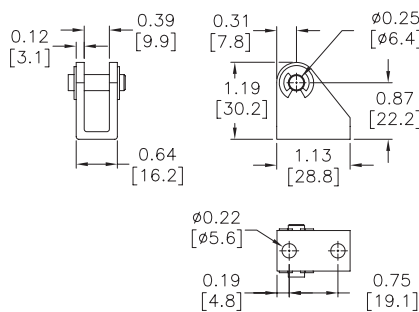
FMB-7



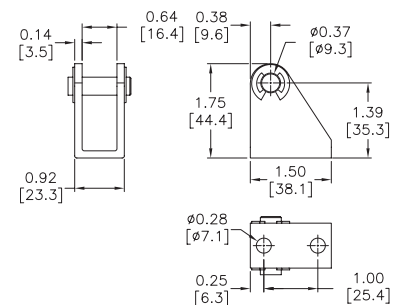
FMB-11



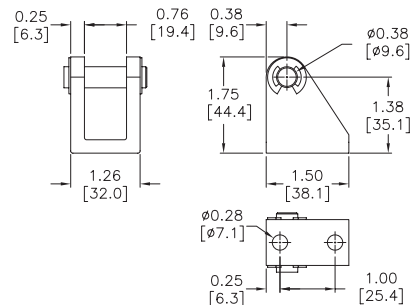
FPBP-2



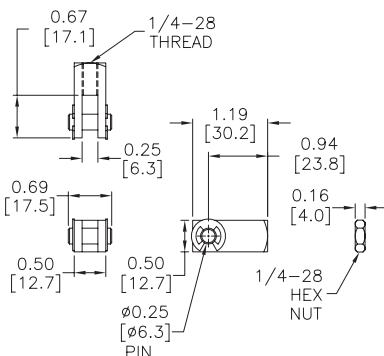
FPBP-3



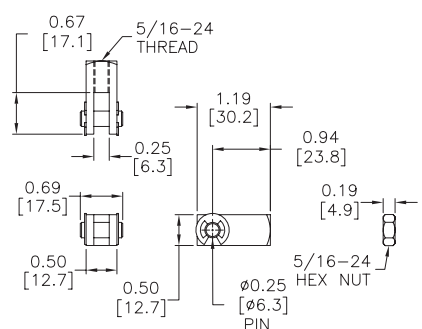
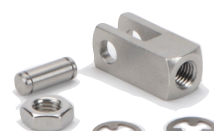
FPBP-4



FRC-14-28



FRC-516-24



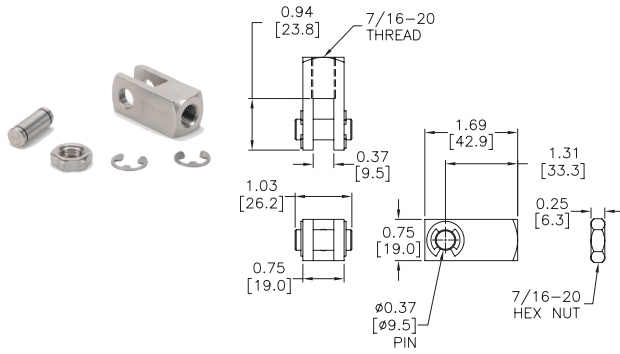


F-Series All Stainless Steel Pneumatic Cylinder Accessories

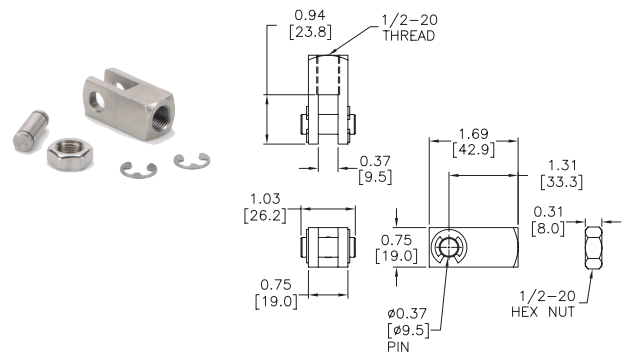
Dimensions

inches [mm]

FRC-716-20



FRC-12-20





CPS Series Cylinder Position Switches

Position Switch Cross Reference Chart			
NITRA Switch Type	Cylinder Brand (may fit some of these cylinders)	Photo Example	Groove Illustration
CPS CPSF	NITRA A-Series NITRA D-Series NITRA F-Series		
CPS9C	DE-STA-CO Robohand SMC Compact Air Bimba Fabco		
CPS9D	NITRA L-Series Fabco Numatics Rotomation		
CPS9E	NITRA L-Series Fabco Numatics Rotomation		
CPS9F	NITRA G-Series Fabco Festo Numatics Rotomation		
CPS9H	NITRA E-Series NITRA H-Series		
CPS9M	Norgren		
CPS9Q	NITRA L-Series NITRA G-Series Parker Fabco Festo Numatics Rotomation		