



SLV Series Pneumatic Lockout Valves

Accessories

Features

- Silencers (mufflers) are aluminum construction
- High flow rates needed for safety lockout valves
- Pressure indicator pops out when pressure of 5psi or more is present



HVM-34N



SLV-PU

Note: HVM series exhaust silencers have a maximum pressure of 250PSI (17 bar).

| NITRA SLV Series Pneumatic Lockout Valve Accessories | | | |
|--|--|---------|--------------|
| Part No. | Description | Price | Weight (lbs) |
| <u>HVM-18N</u> | NITRA pneumatic exhaust silencer, aluminum, cylindrical, Cv=2, 1/8in male NPT | \$25.50 | 0.1 |
| <u>HVM-14N</u> | NITRA pneumatic exhaust silencer, aluminum, cylindrical, Cv=2.7, 1/4in male NPT | \$25.50 | 0.1 |
| <u>HVM-38N</u> | NITRA pneumatic exhaust silencer, aluminum, cylindrical, Cv=3.2, 3/8in male NPT | \$25.50 | 0.1 |
| <u>HVM-38N-H</u> | NITRA pneumatic exhaust silencer, aluminum, cylindrical, Cv=4.9, 3/8in male NPT | \$32.50 | 0.2 |
| <u>HVM-12N</u> | NITRA pneumatic exhaust silencer, aluminum, cylindrical, Cv=5.9, 1/2in male NPT | \$35.00 | 0.2 |
| <u>HVM-34N</u> | NITRA pneumatic exhaust silencer, aluminum, cylindrical, Cv=5.9, 3/4in male NPT | \$32.50 | 0.2 |
| <u>HVM-34N-H</u> | NITRA pneumatic exhaust silencer, aluminum, cylindrical, Cv=13.5, 3/4in male NPT | \$71.00 | 0.6 |
| <u>HVM-1N</u> | NITRA pneumatic exhaust silencer, aluminum, cylindrical, Cv=16.7, 1in male NPT | \$71.00 | 0.6 |
| <u>HVM-114N</u> | NITRA pneumatic exhaust silencer, aluminum, cylindrical, Cv=17.4, 1-1/4in male NPT | \$71.00 | 0.6 |
| <u>SLV-PU</u> | NITRA pneumatic pop up pressure indicator, 5 psi, 1/8in male NPT | \$31.00 | 0.1 |



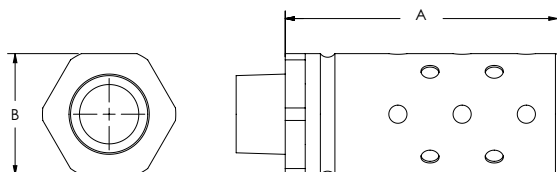
SLV Series Pneumatic Lockout Valves

Accessories

Nitra High Volume Silencers (Mufflers)

Dimensions

inches [mm]

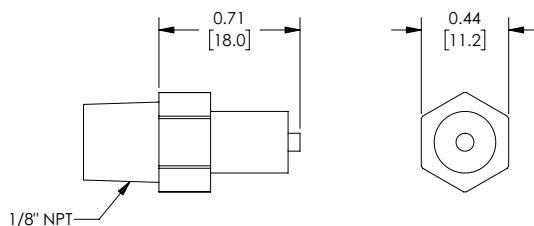


| Muffler Dimensions | | |
|--------------------|--------------|-------------|
| Part # | A | B |
| HVM-18N | 1.6 [40.64] | 0.8 [20.32] |
| HVM-14N | 1.6 [40.64] | 0.8 [20.32] |
| HVM-38N | 1.6 [40.64] | 0.8 [20.32] |
| HVM-38N-H | 2.9 [73.66] | 1.3 [33.02] |
| HVM-12N | 2.9 [73.66] | 1.3 [33.02] |
| HVM-34N | 2.9 [73.66] | 1.3 [33.02] |
| HVM-34N-H | 4.5 [114.30] | 2.0 [50.80] |
| HVM-1N | 4.5 [114.30] | 2.0 [50.80] |
| HVM-114N | 4.5 [114.30] | 2.0 [50.80] |

Nitra Pop Up Pressure Indicator

Dimensions

inches [mm]



See our website www.AutomationDirect.com for complete Engineering drawings.