



# Polypropylene Manifolds



## NITRA polypropylene manifolds

- 2 to 10 stations
- Variety of port sizes
- Polypropylene (PP)
- Maximum input pressure 150psi
- Made in the USA



Part No. [MRP-2CB](#)

Part No. [MRP-2DC](#)

## NITRA Polypropylene Manifolds

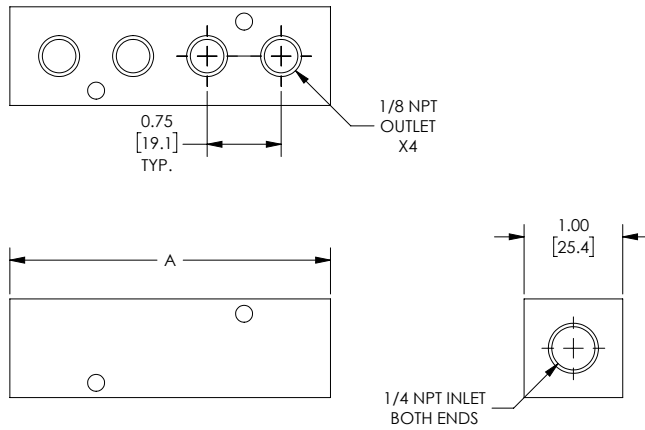
Part No.	Description	A	Parts Per Pkg	Weight (lbs)	Price
<a href="#">MRP-2CB</a>	NITRA air or water pneumatic manifold, polypropylene (PP), rectangular, 150 psi maximum operating pressure, 2 stations, (2) 1/4in female NPT inlet(s), (2) 1/8in female NPT outlet(s), standard hole spacing.	1.75 [44.5]	1	0.07	\$40.50
<a href="#">MRP-3CB</a>	NITRA air or water pneumatic manifold, polypropylene (PP), rectangular, 150 psi maximum operating pressure, 3 stations, (2) 1/4in female NPT inlet(s), (3) 1/8in female NPT outlet(s), standard hole spacing.	2.50 [63.5]	1	0.11	\$45.00
<a href="#">MRP-4CB</a>	NITRA air or water pneumatic manifold, polypropylene (PP), rectangular, 150 psi maximum operating pressure, 4 stations, (2) 1/4in female NPT inlet(s), (4) 1/8in female NPT outlet(s), standard hole spacing.	3.25 [82.6]	1	0.13	\$50.00
<a href="#">MRP-5CB</a>	NITRA air or water pneumatic manifold, polypropylene (PP), rectangular, 150 psi maximum operating pressure, 5 stations, (2) 1/4in female NPT inlet(s), (5) 1/8in female NPT outlet(s), standard hole spacing.	4.00 [101.6]	1	0.16	\$51.00
<a href="#">MRP-6CB</a>	NITRA air or water pneumatic manifold, polypropylene (PP), rectangular, 150 psi maximum operating pressure, 6 stations, (2) 1/4in female NPT inlet(s), (6) 1/8in female NPT outlet(s), standard hole spacing.	4.75 [120.7]	1	0.19	\$54.00
<a href="#">MRP-7CB</a>	NITRA air or water pneumatic manifold, polypropylene (PP), rectangular, 150 psi maximum operating pressure, 7 stations, (2) 1/4in female NPT inlet(s), (7) 1/8in female NPT outlet(s), standard hole spacing.	5.50 [139.7]	1	0.24	\$57.00
<a href="#">MRP-8CB</a>	NITRA air or water pneumatic manifold, polypropylene (PP), rectangular, 150 psi maximum operating pressure, 8 stations, (2) 1/4in female NPT inlet(s), (8) 1/8in female NPT outlet(s), standard hole spacing.	6.25 [158.8]	1	0.25	\$63.00
<a href="#">MRP-9CB</a>	NITRA air or water pneumatic manifold, polypropylene (PP), rectangular, 150 psi maximum operating pressure, 9 stations, (2) 1/4in female NPT inlet(s), (9) 1/8in female NPT outlet(s), standard hole spacing.	7.00 [177.8]	1	0.30	\$65.00
<a href="#">MRP-10CB</a>	NITRA air or water pneumatic manifold, polypropylene (PP), rectangular, 150 psi maximum operating pressure, 10 stations, (2) 1/4in female NPT inlet(s), (10) 1/8in female NPT outlet(s), standard hole spacing.	7.75 [196.9]	1	0.32	\$67.00
<a href="#">MRP-2DC</a>	NITRA air or water pneumatic manifold, polypropylene (PP), rectangular, 150 psi maximum operating pressure, 2 stations, (2) 3/8in female NPT inlet(s), (2) 1/4in female NPT outlet(s), standard hole spacing.	2.13 [54.0]	1	0.13	\$45.00
<a href="#">MRP-3DC</a>	NITRA air or water pneumatic manifold, polypropylene (PP), rectangular, 150 psi maximum operating pressure, 3 stations, (2) 3/8in female NPT inlet(s), (3) 1/4in female NPT outlet(s), standard hole spacing.	3.00 [76.2]	1	0.18	\$48.00
<a href="#">MRP-4DC</a>	NITRA air or water pneumatic manifold, polypropylene (PP), rectangular, 150 psi maximum operating pressure, 4 stations, (2) 3/8in female NPT inlet(s), (4) 1/4in female NPT outlet(s), standard hole spacing.	3.88 [98.4]	1	0.23	\$53.00
<a href="#">MRP-5DC</a>	NITRA air or water pneumatic manifold, polypropylene (PP), rectangular, 150 psi maximum operating pressure, 5 stations, (2) 3/8in female NPT inlet(s), (5) 1/4in female NPT outlet(s), standard hole spacing.	4.75 [120.7]	1	0.30	\$56.00
<a href="#">MRP-6DC</a>	NITRA air or water pneumatic manifold, polypropylene (PP), rectangular, 150 psi maximum operating pressure, 6 stations, (2) 3/8in female NPT inlet(s), (6) 1/4in female NPT outlet(s), standard hole spacing.	5.63 [142.9]	1	0.34	\$59.00
<a href="#">MRP-7DC</a>	NITRA air or water pneumatic manifold, polypropylene (PP), rectangular, 150 psi maximum operating pressure, 7 stations, (2) 3/8in female NPT inlet(s), (7) 1/4in female NPT outlet(s), standard hole spacing.	6.50 [165.1]	1	0.41	\$63.00
<a href="#">MRP-8DC</a>	NITRA air or water pneumatic manifold, polypropylene (PP), rectangular, 150 psi maximum operating pressure, 8 stations, (2) 3/8in female NPT inlet(s), (9) 1/4in female NPT outlet(s), standard hole spacing.	7.38 [187.3]	1	0.45	\$67.00
<a href="#">MRP-9DC</a>	NITRA air or water pneumatic manifold, polypropylene (PP), rectangular, 150 psi maximum operating pressure, 9 stations, (2) 3/8in female NPT inlet(s), (9) 1/4in female NPT outlet(s), standard hole spacing.	8.25 [209.6]	1	0.54	\$69.00
<a href="#">MRP-10DC</a>	NITRA air or water pneumatic manifold, polypropylene (PP), rectangular, 150 psi maximum operating pressure, 10 stations, (2) 3/8in female NPT inlet(s), (10) 1/4in female NPT outlet(s), standard hole spacing.	9.13 [231.8]	1	0.59	\$72.00



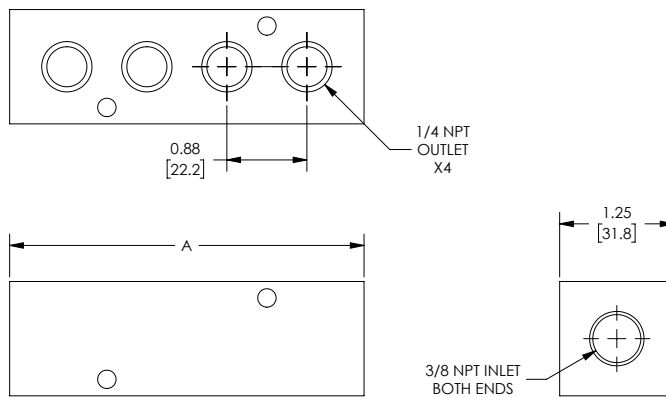
# Polypropylene Manifolds

## Dimensions

inches [mm]



**Part No. MRP-xCB**



**Part No. MRP-xDC**

See our website [www.AutomationDirect.com](http://www.AutomationDirect.com) for complete Engineering drawings.