



Pneumatic Manual Valves

303 Stainless Steel Single Stem Style



Part No. GVS-3COF-TD-SS



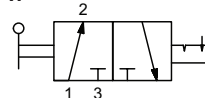
Part No. GVS-3COF-PB-SS

NITRA GVS manual valves offer a simple, convenient method for directional control and other pneumatic valve applications. All valves can be through panel mounted for a very clean looking operator interface.

- Single stem design
- Stainless Steel construction
- High flow
- Made in USA

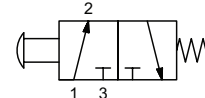


Diagram "A"



3-port, 2-position

Diagram "B"

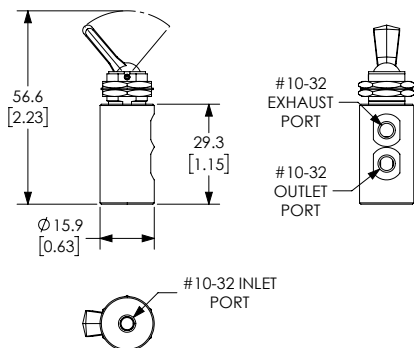


3-port, 2-position

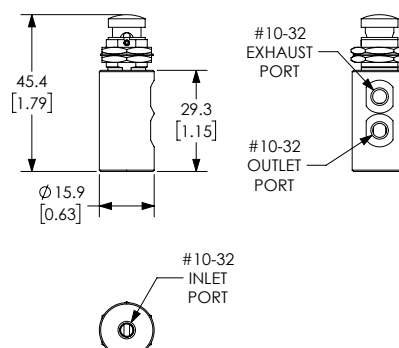
Specifications		
Models	<u>GVS-3COF-TD-SS</u>	<u>GVS-3COF-PB-SS</u>
Price	\$41.50	\$40.00
Weight (lbs)	0.1	0.1
Valve Type	3-port (3-way) 2-position	
Acting	Toggle style actuator, normally closed, detented, through panel mount	Pushbutton, normally closed, spring return, through panel mount
Diagram	A	B
Port Size	90-degree ports, #10-32 female threaded inlet(s), #10-32 female threaded outlet(s), #10-32 female threaded exhaust(s)	90-degree ports, #10-32 female threaded inlet(s), #10-32 female threaded outlet(s), #10-32 female threaded exhaust(s)
Flow (Cv)	0.27	0.27
Fluid	Air (to be filtered by 40µ filter element)	
Min. / Max. Pressure	26" Hg to 125 psi (-0.8 to 8.62 bar)	
Temperature	-20°F to 160°F (-51°C to 71°C)	
Lubrication	Not Required	
Body	Brass/ Electroless Nickel, Aluminum/ Anodize, Stainless Steel, Buna-N	
Protection	IP65	

Dimensions mm [inches]

- Note: For panel mounting
- Maximum thickness 0.25"
 - Diameter Ø 0.484 thru



Part No. GVS-3COF-TD-SS






Part No. GVS-3COF-PB-SS

See our website www.AutomationDirect.com for complete Engineering drawings.

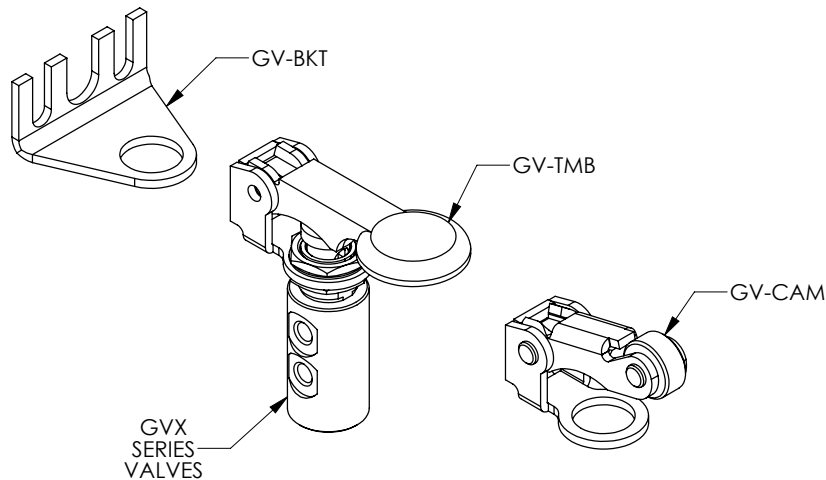


GVP and GVS Series Pneumatic Valve Accessories



Nitra Pneumatic GVP and GVS Series Pneumatic Valve Accessories				
Item	Part No.	Description	Price	Weight (lbs)
	<u>GV-BKT</u>	NITRA 90 degree mounting bracket, plated steel. For use with all GVP and GVS valves.	\$3.50	0.5
	<u>GV-CAM</u>	NITRA roller cam actuator, plated steel, for use with all GVP and GVS valves. The roller is manufactured from durable acetal plastic. All cams feature a unique acetal pad which minimizes side load and virtually eliminates wear.	\$14.50	0.5
	<u>GV-TMB</u>	NITRA thumb actuator, plated steel, for use with all GVP and GVS valves.	\$13.50	0.5

Assembly Example



See our website www.AutomationDirect.com for complete Engineering drawings.