

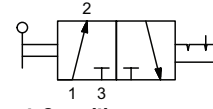


Pneumatic Manual Valves

Manual Valves, Normally Closed, Detented, Toggle

NITRA GVP manual valves offer a simple, convenient method for directional control and other pneumatic valve applications. All valves can be through panel mounted for a very clean looking operator interface. Valves with male NPT inlets can be threaded into MR series air manifolds to simplify supply connections.

Diagram "A"



3-port, 2-position



Part No. GVP-3C2P-TD

- Swivel output port
- High flow
- Poppet design contributes to product life
- Made in USA



Part No. GVP-3C1M2P-TD



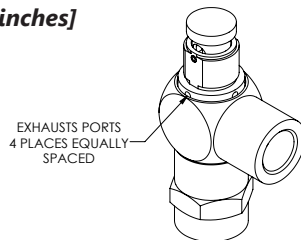
Part No. GVP-3C1F-TD

| Specifications | | | |
|----------------------|--|--|--|
| Models | <u>GVP-3C2P-TD</u> | <u>GVP-3C1M2P-TD</u> | <u>GVP-3C1F-TD</u> |
| Price | \$38.00 | \$39.00 | \$37.00 |
| Weight (lbs) | 0.1 | 0.1 | 0.1 |
| Valve Type | 3-port (3-way) 2-position, NC | | |
| Acting | Toggle style actuator, normally closed, detented, through panel mount | | |
| Diagram | A | A | A |
| Port Size | 90-degree ports, 1/4in tube inlet(s), 1/4in tube outlet(s), (1) vent hole exhaust(s) | 90-degree ports, 1/8in male NPT inlet(s), 1/4in tube outlet(s), (1) vent hole exhaust(s) | 90-degree ports, 1/8in female NPT inlet(s), 1/8in FNPT outlet(s), (1) vent hole exhaust(s) |
| Flow (Cv) | 0.23 | 0.23 | 0.23 |
| Fluid | Air (to be filtered by 40µ filter element) | | |
| Min. / Max. Pressure | 0 to 125 psi (0 to 8.62 bar) | | |
| Temperature | -20°F to 160°F (-51°C to 71°C) | | |
| Lubrication | Not Required | | |
| Body | Aluminum/ Anodize, Brass/ Electroless Nickel, Stainless Steel, Nylon, Acetal Copolymer, Buna-N | | |
| Protection | IP65 | | |

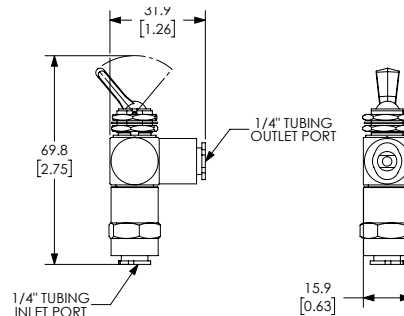
Dimensions

mm [inches]

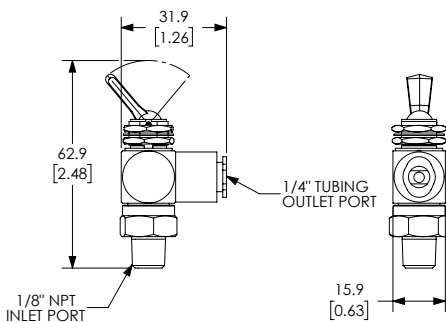
Note: For panel mounting
 • Maximum thickness 0.25"
 • Diameter Ø 0.484 thru



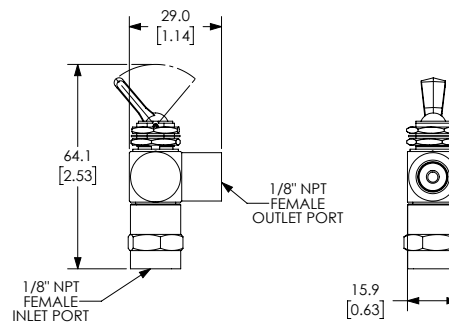
TYPICAL EXHAUST ON GVP- VALVES
 LOCK NUTS AND WASHERS NOT SHOWN FOR CLARITY



Part No. GVP-3C2P-TD



Part No. GVP-3C1M2P-TD






Part No. GVP-3C1F-TD

See our website www.AutomationDirect.com for complete Engineering drawings.

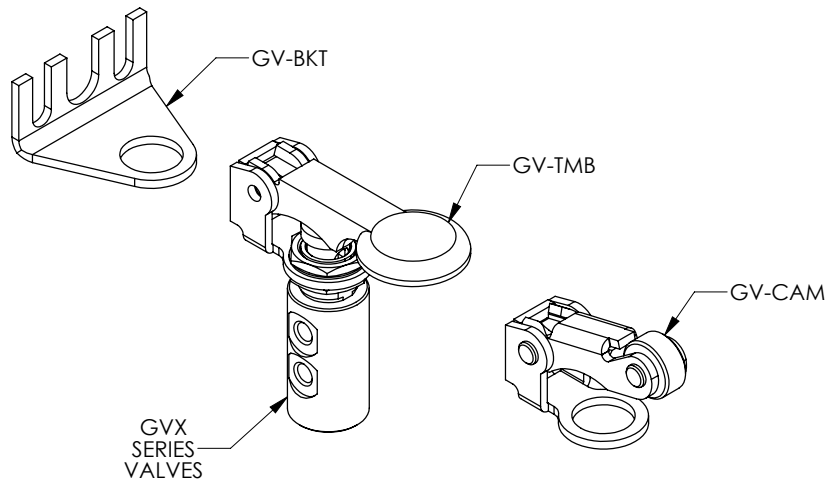


GVP and GVS Series Pneumatic Valve Accessories



| Nitra Pneumatic GVP and GVS Series Pneumatic Valve Accessories | | | | |
|---|----------------------|---|---------|--------------|
| Item | Part No. | Description | Price | Weight (lbs) |
|  | <u>GV-BKT</u> | NITRA 90 degree mounting bracket, plated steel. For use with all GVP and GVS valves. | \$3.50 | 0.5 |
|  | <u>GV-CAM</u> | NITRA roller cam actuator, plated steel, for use with all GVP and GVS valves. The roller is manufactured from durable acetal plastic. All cams feature a unique acetal pad which minimizes side load and virtually eliminates wear. | \$14.50 | 0.5 |
|  | <u>GV-TMB</u> | NITRA thumb actuator, plated steel, for use with all GVP and GVS valves. | \$13.50 | 0.5 |

Assembly Example



See our website www.AutomationDirect.com for complete Engineering drawings.