



# Pneumatic Manual Valves

## Heavy Duty Toggle and Pushbutton Valves

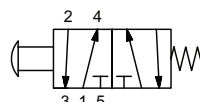
Part No. [GVS-520F-PB](#)Part No. [GVS-520F-TD](#)Part No. [GVS-521F-PB](#)Part No. [GVS-521F-TD](#)

NITRA GVS manual valves offer a simple, convenient method for directional control and other pneumatic valve applications. All valves can be thru-panel mounted for a very clean looking operator interface.

- Single stem design
- High flow
- Made in USA

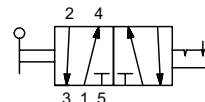


Diagram "A"



5-port, 2-position

Diagram "B"



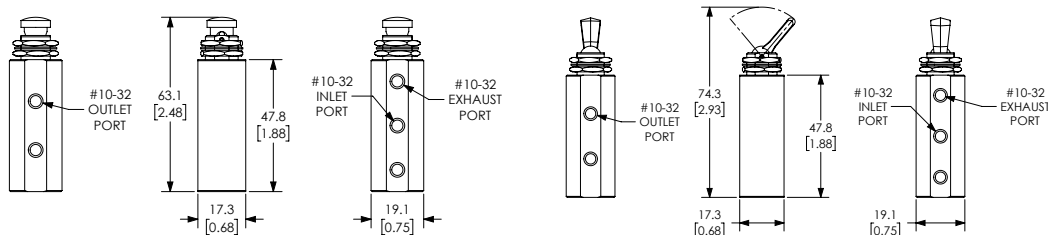
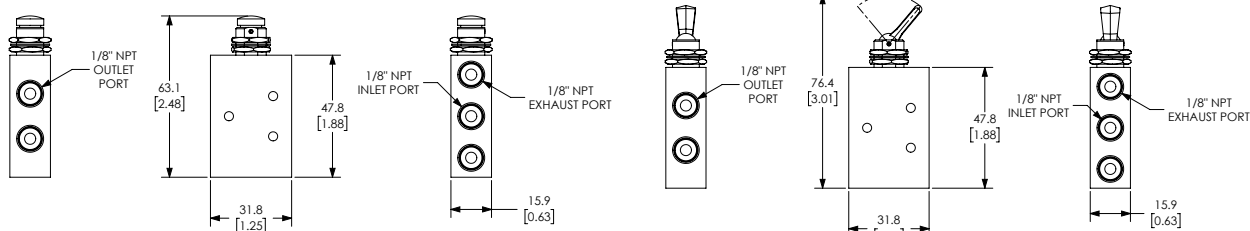
5-port, 2-position

Specifications				
Models	<a href="#">GVS-520F-PB</a>	<a href="#">GVS-520F-TD</a>	<a href="#">GVS-521F-PB</a>	<a href="#">GVS-521F-TD</a>
Price	\$33.50	\$35.50	\$38.00	\$40.00
Weight (lbs)	0.1	0.1	0.1	0.15
Valve Type	5-port (4-way) 2-position			
Acting	Pushbutton, spring return, through panel mount	Toggle style actuator, detented, through panel mount	Pushbutton, spring return, through panel mount	Toggle style actuator, detented, through panel mount
Diagram	A	B	A	B
Port Size	#10-32 female threaded inlet(s), #10-32 female threaded outlet(s), #10-32 female threaded exhaust(s)	#10-32 female threaded inlet(s), #10-32 female threaded outlet(s), #10-32 female threaded exhaust(s)	1/8in FNPT inlet(s), 1/8in FNPT outlet(s), 1/8in FNPT exhaust(s)	1/8in FNPT inlet(s), 1/8in FNPT outlet(s), 1/8in FNPT exhaust(s)
Flow (Cv)	0.23	0.23	0.37	0.37
Fluid	Air (to be filtered by 40μ filter element)			
Min. / Max. Pressure	0 to 125 psi (0 to 8.62 bar)			
Temperature	-20°F to 160°F (-51°C to 71°C)			
Lubrication	Not Required			
Body	Aluminum/ Anodize, Brass/ Electroless Nickel, Acetal, Stainless Steel, Nylon, Brass, Buna-N			
Protection	IP65			

## Dimensions

mm [inches]

Note: For panel mounting  
 • Maximum thickness 0.25"  
 • Diameter Ø 0.484 thru




Part No. [GVS-520F-PB](#)Part No. [GVS-520F-TD](#)Part No. [GVS-521F-PB](#)Part No. [GVS-521F-TD](#)

See our website [www.AutomationDirect.com](http://www.AutomationDirect.com) for complete Engineering drawings.



# GVP and GVS Series Pneumatic Valve Accessories



Nitra Pneumatic GVP and GVS Series Pneumatic Valve Accessories				
Item	Part No.	Description	Price	Weight (lbs)
	<a href="#"><u>GV-BKT</u></a>	NITRA 90 degree mounting bracket, plated steel. For use with all GVP and GVS valves.	\$3.75	0.5
	<a href="#"><u>GV-CAM</u></a>	NITRA roller cam actuator, plated steel, for use with all GVP and GVS valves. The roller is manufactured from durable acetal plastic. All cams feature a unique acetal pad which minimizes side load and virtually eliminates wear.	\$15.00	0.5
	<a href="#"><u>GV-TMB</u></a>	NITRA thumb actuator, plated steel, for use with all GVP and GVS valves.	\$14.00	0.5

## Assembly Example



See our website [www.AutomationDirect.com](http://www.AutomationDirect.com) for complete Engineering drawings.