



Pneumatic Manual Valves

Heavy Duty Toggle and Pushbutton Valves

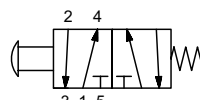
Part No. GVS-520F-PB

NITRA GVS manual valves offer a simple, convenient method for directional control and other pneumatic valve applications. All valves can be thru-panel mounted for a very clean looking operator interface.

- Single stem design
- High flow
- Made in USA

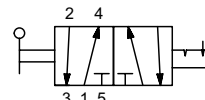


Diagram "A"



5-port, 2-position

Diagram "B"



5-port, 2-position

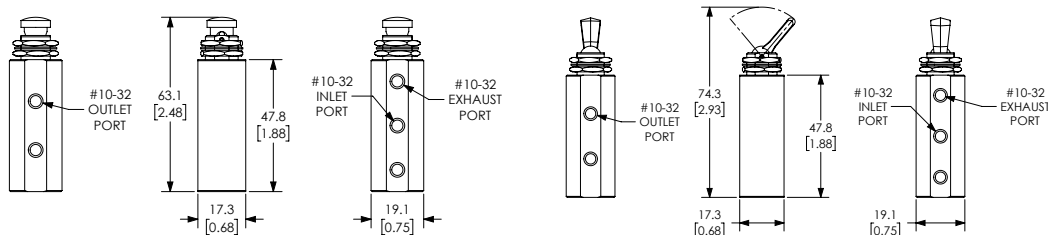
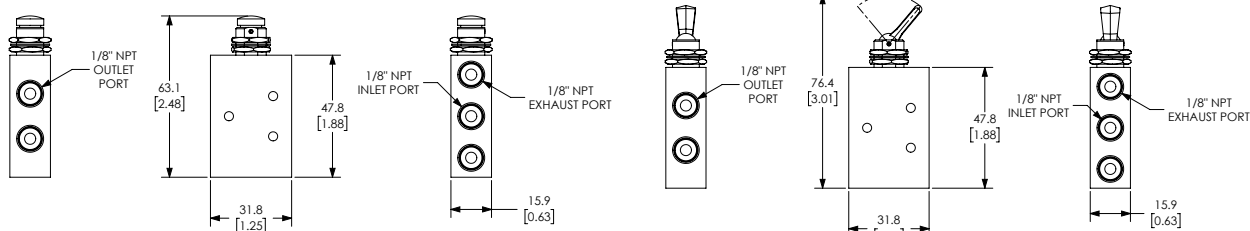
Part No. GVS-520F-TDPart No. GVS-521F-PBPart No. GVS-521F-TD

| Specifications | | | | |
|----------------------|--|--|--|--|
| Models | GVS-520F-PB | GVS-520F-TD | GVS-521F-PB | GVS-521F-TD |
| Price | \$33.50 | \$35.50 | \$38.00 | \$40.00 |
| Weight (lbs) | 0.1 | 0.1 | 0.1 | 0.15 |
| Valve Type | 5-port (4-way) 2-position | | | |
| Acting | Pushbutton, spring return, through panel mount | Toggle style actuator, detented, through panel mount | Pushbutton, spring return, through panel mount | Toggle style actuator, detented, through panel mount |
| Diagram | A | B | A | B |
| Port Size | #10-32 female threaded inlet(s), #10-32 female threaded outlet(s), #10-32 female threaded exhaust(s) | #10-32 female threaded inlet(s), #10-32 female threaded outlet(s), #10-32 female threaded exhaust(s) | 1/8in FNPT inlet(s), 1/8in FNPT outlet(s), 1/8in FNPT exhaust(s) | 1/8in FNPT inlet(s), 1/8in FNPT outlet(s), 1/8in FNPT exhaust(s) |
| Flow (Cv) | 0.23 | 0.23 | 0.37 | 0.37 |
| Fluid | Air (to be filtered by 40μ filter element) | | | |
| Min. / Max. Pressure | 0 to 125 psi (0 to 8.62 bar) | | | |
| Temperature | -20°F to 160°F (-51°C to 71°C) | | | |
| Lubrication | Not Required | | | |
| Body | Aluminum/ Anodize, Brass/ Electroless Nickel, Acetal, Stainless Steel, Nylon, Brass, Buna-N | | | |
| Protection | IP65 | | | |

Dimensions

mm [inches]

Note: For panel mounting
 • Maximum thickness 0.25"
 • Diameter Ø 0.484 thru




Part No. GVS-520F-PBPart No. GVS-520F-TDPart No. GVS-521F-PBPart No. GVS-521F-TD

See our website www.AutomationDirect.com for complete Engineering drawings.

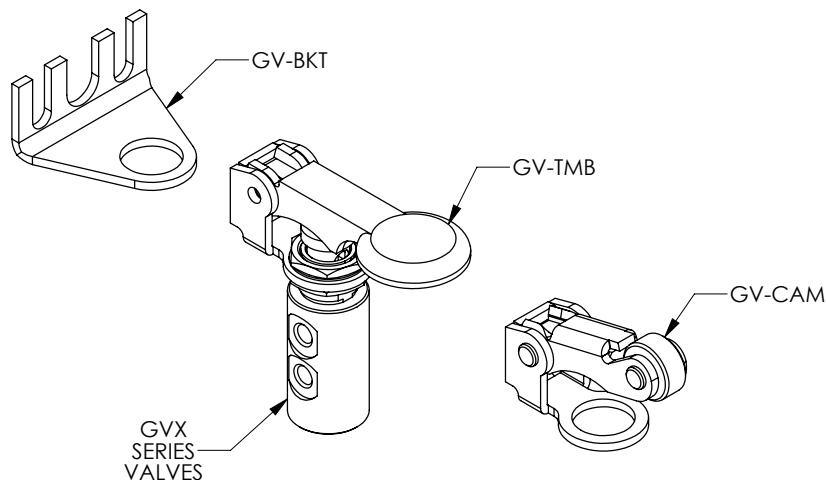


GVP and GVS Series Pneumatic Valve Accessories



| Nitra Pneumatic GVP and GVS Series Pneumatic Valve Accessories | | | | |
|---|----------------------|---|---------|--------------|
| Item | Part No. | Description | Price | Weight (lbs) |
|  | <u>GV-BKT</u> | NITRA 90 degree mounting bracket, plated steel. For use with all GVP and GVS valves. | \$3.75 | 0.5 |
|  | <u>GV-CAM</u> | NITRA roller cam actuator, plated steel, for use with all GVP and GVS valves. The roller is manufactured from durable acetal plastic. All cams feature a unique acetal pad which minimizes side load and virtually eliminates wear. | \$15.00 | 0.5 |
|  | <u>GV-TMB</u> | NITRA thumb actuator, plated steel, for use with all GVP and GVS valves. | \$14.00 | 0.5 |

Assembly Example



See our website www.AutomationDirect.com for complete Engineering drawings.