



# Pneumatic Manual Valves

## Aluminum and Stainless Single Stem Style



Part No. [GVS-331F-TD](#)



Part No. [GVS-331F-TM](#)



Part No. [GVS-231F-TD](#)



Part No. [GVS-231F-TM](#)

NITRA GVS manual valves offer the unique feature of two spool valves in one body with a common inlet port. Available as either (2) 3-way NC or (2) 2-way NC with a momentary or detented toggle operator. All valves can be through-panel mounted for a very clean looking operator interface.

- Single stem design
- High flow
- Made in USA



Diagram "A"

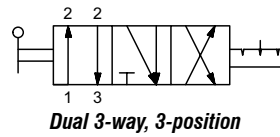


Diagram "B"

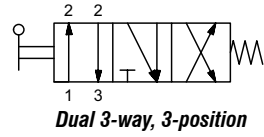


Diagram "C"

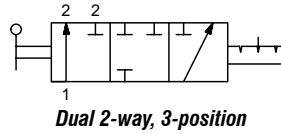
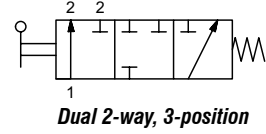


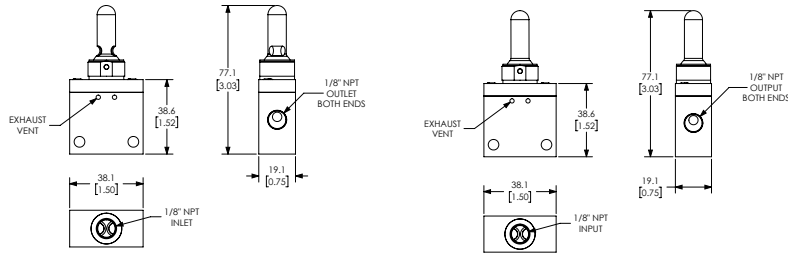
Diagram "D"



Specifications				
Models	<a href="#">GVS-331F-TD</a>	<a href="#">GVS-331F-TM</a>	<a href="#">GVS-231F-TD</a>	<a href="#">GVS-231F-TM</a>
Price	\$70.00	\$70.00	\$70.00	\$73.00
Weight (lbs)	0.3	0.3	0.3	0.3
Valve Type	Dual 3-way, 3-position, center exhaust		Dual 2-way, 3-position, center closed	
Acting	Toggle style actuator, detented, through panel mount	Toggle style, spring return, through panel mount	Toggle style actuator, detented, through panel mount	Toggle style, spring return, through panel mount
Diagram	A	B	C	D
Port Size	1/8in female NPT inlet(s), 1/8in female NPT outlet(s), 1 vent hole exhaust(s)	1/8in female NPT inlet(s), 1/8in female NPT outlet(s), 1 vent hole exhaust(s)	1/8in female NPT inlet(s), 1/8in female NPT outlet(s)	1/8in female NPT inlet(s), 1/8in female NPT outlet(s)
Flow (Cv)	0.54	0.54	0.54	0.54
Fluid	Air (to be filtered by 40µ filter element)			
Min. / Max. Pressure	0 to 125 psi (0 to 8.62 bar)			
Temperature	-20°F to 160°F (-51°C to 71°C)			
Lubrication	Not Required			
Body	Aluminum/ Anodize, Brass/ Electroless Nickel, Acetal, Stainless Steel, Nylon, Brass, Buna-N			
Protection	IP65			

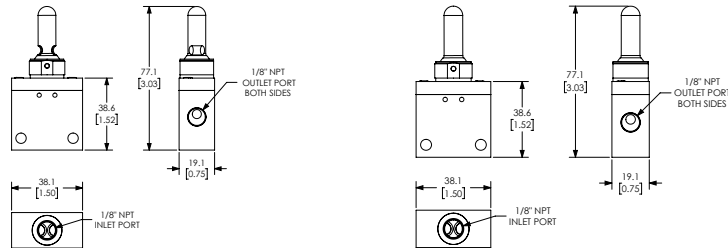
## Dimensions mm [inches]

- Note: For panel mounting
- Maximum thickness 0.25"
  - Diameter Ø 0.781 thru



Part No. [GVS-331F-TD](#)

Part No. [GVS-331F-TM](#)



Part No. [GVS-231F-TD](#)




Part No. [GVS-231F-TM](#)

See our website [www.AutomationDirect.com](http://www.AutomationDirect.com) for complete Engineering drawings.

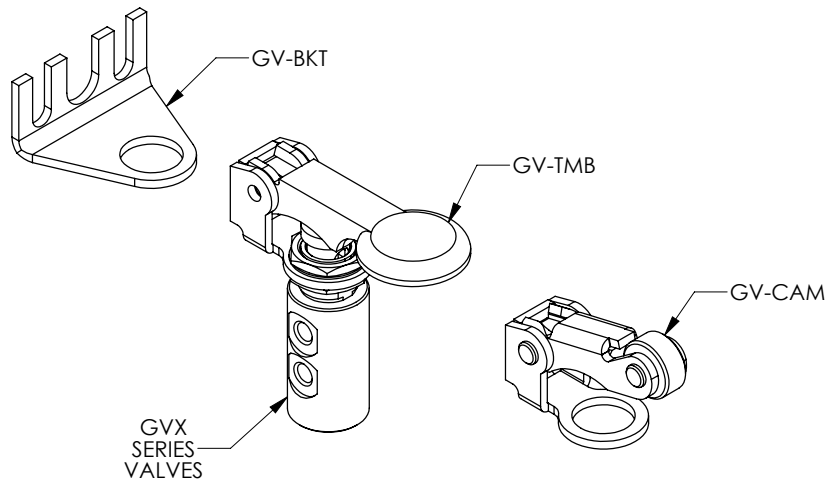


# GVP and GVS Series Pneumatic Valve Accessories



Nitra Pneumatic GVP and GVS Series Pneumatic Valve Accessories				
Item	Part No.	Description	Price	Weight (lbs)
	<b><u>GV-BKT</u></b>	NITRA 90 degree mounting bracket, plated steel. For use with all GVP and GVS valves.	\$3.75	0.5
	<b><u>GV-CAM</u></b>	NITRA roller cam actuator, plated steel, for use with all GVP and GVS valves. The roller is manufactured from durable acetal plastic. All cams feature a unique acetal pad which minimizes side load and virtually eliminates wear.	\$15.00	0.5
	<b><u>GV-TMB</u></b>	NITRA thumb actuator, plated steel, for use with all GVP and GVS valves.	\$14.00	0.5

**Assembly Example**



See our website [www.AutomationDirect.com](http://www.AutomationDirect.com) for complete Engineering drawings.