



# Pneumatic Manual Valves

## Aluminum Single Stem Style

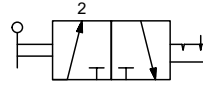
Part No. **GVS-3C1F-TD**

NITRA GVS manual valves offer a simple, convenient method for directional control and other pneumatic valve applications. All valves can be through panel mounted for a very clean looking operator interface.

- Single stem design
- High flow
- Made in USA

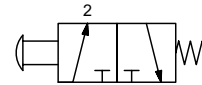


Diagram "A"



3-port, 2-position

Diagram "B"



3-port, 2-position

Part No. **GVS-3C1F-PB**Part No. **GVS-3CS1F-TD**Part No. **GVS-3CS1F-PB**

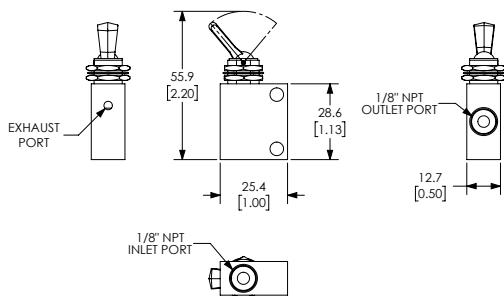
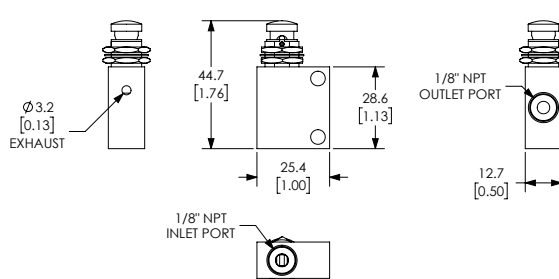
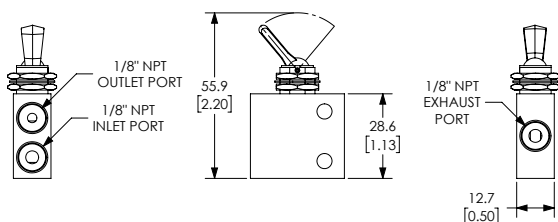
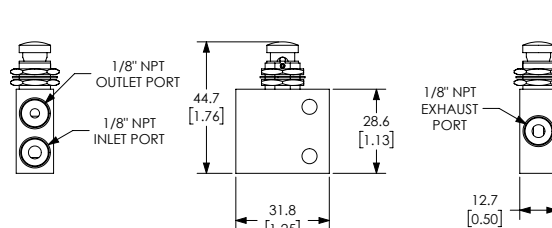
Specifications				
Models	<b>GVS-3C1F-TD</b>	<b>GVS-3C1F-PB</b>	<b>GVS-3CS1F-TD</b>	<b>GVS-3CS1F-PB</b>
Price	\$30.50	\$26.50	\$38.50	\$36.50
Weight (lbs)	0.05	0.05	0.1	0.1
Valve Type	3-port (3-way) 2-position			
Acting	Toggle style actuator, normally closed, detented, through panel mount	Pushbutton, normally closed, spring return, through panel mount	Toggle style actuator, normally closed, detented, through panel mount	Pushbutton, normally closed, spring return, through panel mount
Diagram	A	B	A	B
Port Size	1/8in female NPT inlet(s), 1/8in female NPT outlet(s), vent hole exhaust	1/8in female NPT inlet(s), 1/8in female NPT outlet(s), vent hole exhaust	Side ports, 1/8in female NPT inlet(s), 1/8in female NPT outlet(s), 1/8in female NPT exhaust(s)	Side ports, 1/8in female NPT inlet(s), 1/8in female NPT outlet(s), 1/8in female NPT exhaust(s)
Flow (Cv)	0.42	0.42	0.42	0.42
Fluid	Air (to be filtered by 40µ filter element)			
Min. / Max. Pressure	0 to 125 psi (0 to 8.62 bar)			
Temperature	-20°F to 160°F (-51°C to 71°C)			
Lubrication	Not Required			
Body	Aluminum/ Anodize, Brass/ Electroless Nickel, Acetal, Stainless Steel, Nylon, Brass, Buna-N			
Protection	IP65			

## Dimensions

mm [inches]

Note: For panel mounting




- Maximum thickness 0.25"
- Diameter Ø 0.484 thru

Part No. **GVS-3C1F-TD**Part No. **GVS-3C1F-PB**Part No. **GVS-3CS1F-TD**Part No. **GVS-3CS1F-PB**See our website [www.AutomationDirect.com](http://www.AutomationDirect.com) for complete Engineering drawings.

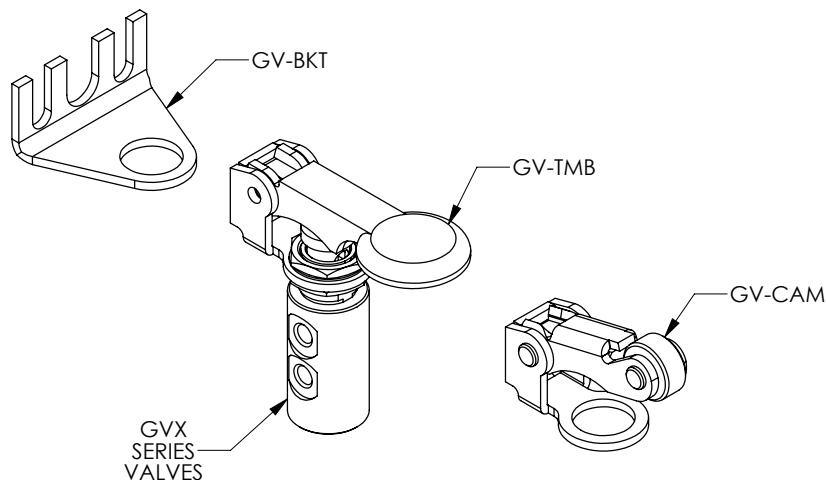


# GVP and GVS Series Pneumatic Valve Accessories



Nitra Pneumatic GVP and GVS Series Pneumatic Valve Accessories				
Item	Part No.	Description	Price	Weight (lbs)
	<b><u>GV-BKT</u></b>	NITRA 90 degree mounting bracket, plated steel. For use with all GVP and GVS valves.	\$3.75	0.5
	<b><u>GV-CAM</u></b>	NITRA roller cam actuator, plated steel, for use with all GVP and GVS valves. The roller is manufactured from durable acetal plastic. All cams feature a unique acetal pad which minimizes side load and virtually eliminates wear.	\$15.00	0.5
	<b><u>GV-TMB</u></b>	NITRA thumb actuator, plated steel, for use with all GVP and GVS valves.	\$14.00	0.5

## Assembly Example



See our website [www.AutomationDirect.com](http://www.AutomationDirect.com) for complete Engineering drawings.