



# Pneumatic Manual Valves

## Aluminum Single Stem Style



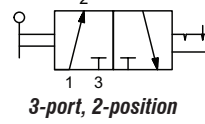
Part No. GVS-3C1F-TD

NITRA GVS manual valves offer a simple, convenient method for directional control and other pneumatic valve applications. All valves can be through panel mounted for a very clean looking operator interface.

- Single stem design
- High flow
- Made in USA

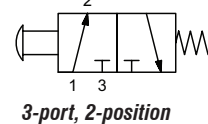


Diagram "A"



3-port, 2-position

Diagram "B"



3-port, 2-position



Part No. GVS-3C1F-PB



Part No. GVS-3CS1F-TD



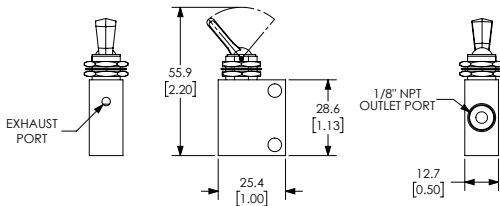
Part No. GVS-3CS1F-PB

Specifications				
<b>Models</b>	<u>GVS-3C1F-TD</u>	<u>GVS-3C1F-PB</u>	<u>GVS-3CS1F-TD</u>	<u>GVS-3CS1F-PB</u>
<b>Price</b>	\$29.00	\$25.50	\$37.00	\$35.00
<b>Weight (lbs)</b>	0.05	0.05	0.1	0.1
<b>Valve Type</b>	3-port (3-way) 2-position			
<b>Acting</b>	Toggle style actuator, normally closed, detented, through panel mount	Pushbutton, normally closed, spring return, through panel mount	Toggle style actuator, normally closed, detented, through panel mount	Pushbutton, normally closed, spring return, through panel mount
<b>Diagram</b>	A	B	A	B
<b>Port Size</b>	1/8in female NPT inlet(s), 1/8in female NPT outlet(s), vent hole exhaust	1/8in female NPT inlet(s), 1/8in female NPT outlet(s), vent hole exhaust	Side ports, 1/8in female NPT inlet(s), 1/8in female NPT outlet(s), 1/8in female NPT exhaust(s)	Side ports, 1/8in female NPT inlet(s), 1/8in female NPT outlet(s), 1/8in female NPT exhaust(s)
<b>Flow (Cv)</b>	0.42	0.42	0.42	0.42
<b>Fluid</b>	Air (to be filtered by 40µ filter element)			
<b>Min. / Max. Pressure</b>	0 to 125 psi (0 to 8.62 bar)			
<b>Temperature</b>	-20°F to 160°F (-51°C to 71°C)			
<b>Lubrication</b>	Not Required			
<b>Body</b>	Aluminum/ Anodize, Brass/ Electroless Nickel, Acetal, Stainless Steel, Nylon, Brass, Buna-N			
<b>Protection</b>	IP65			

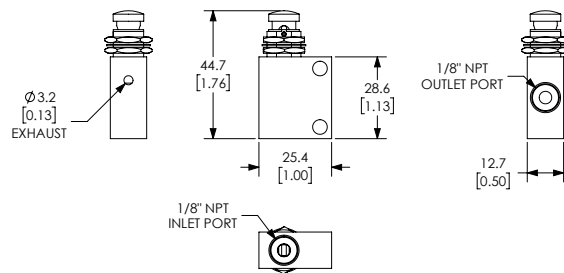
## Dimensions

Note: For panel mounting  
 · Maximum thickness 0.25"  
 · Diameter Ø 0.484 thru

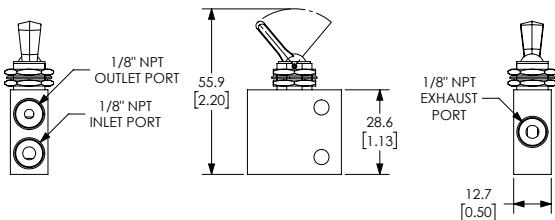
mm [inches]



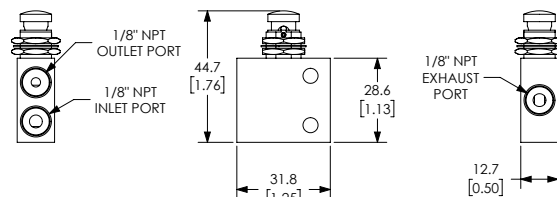
Part No. GVS-3C1F-TD



Part No. GVS-3C1F-PB



Part No. GVS-3CS1F-TD






Part No. GVS-3CS1F-PB

See our website [www.AutomationDirect.com](http://www.AutomationDirect.com) for complete Engineering drawings.

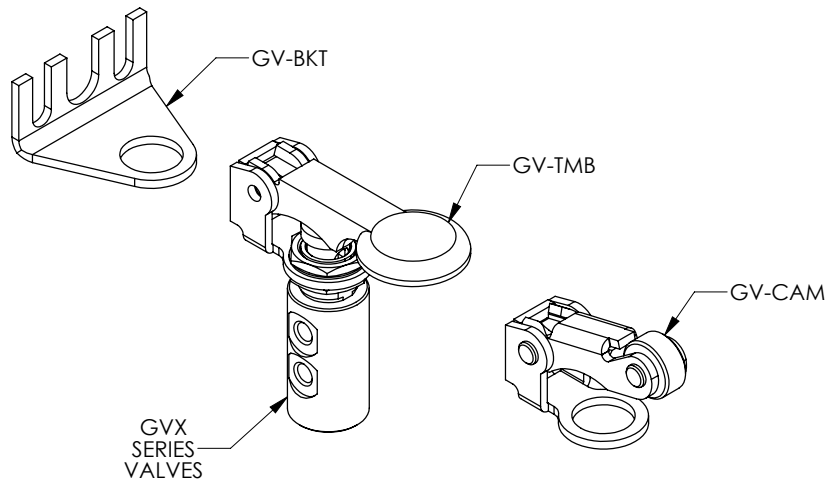


# GVP and GVS Series Pneumatic Valve Accessories



Nitra Pneumatic GVP and GVS Series Pneumatic Valve Accessories				
Item	Part No.	Description	Price	Weight (lbs)
	<b><u>GV-BKT</u></b>	NITRA 90 degree mounting bracket, plated steel. For use with all GVP and GVS valves.	\$3.50	0.5
	<b><u>GV-CAM</u></b>	NITRA roller cam actuator, plated steel, for use with all GVP and GVS valves. The roller is manufactured from durable acetal plastic. All cams feature a unique acetal pad which minimizes side load and virtually eliminates wear.	\$14.50	0.5
	<b><u>GV-TMB</u></b>	NITRA thumb actuator, plated steel, for use with all GVP and GVS valves.	\$13.50	0.5

**Assembly Example**



See our website [www.AutomationDirect.com](http://www.AutomationDirect.com) for complete Engineering drawings.