



Nylon Manifolds



NITRA nylon manifolds

- 2 to 10 stations
- Variety of port sizes
- Nylon 6
- Maximum input pressure 200psi
- Made in the USA

Part No. **MRN-2CB**Part No. **MRN-2DC**

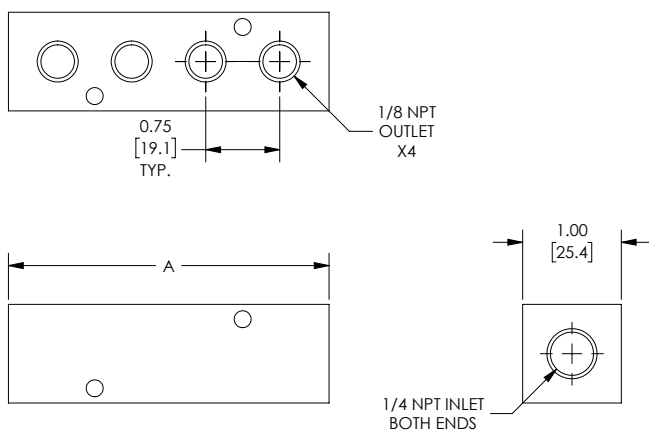
NITRA Nylon Manifolds					
Part No.	Description	A	Parts Per Pkg	Weight (lbs)	Price
<u>MRN-2CB</u>	NITRA air or water pneumatic manifold, nylon 6, rectangular, 200 psi maximum operating pressure, 2 stations, (2) 1/4in female NPT inlet(s), (2) 1/8in female NPT outlet(s), standard hole spacing.	1.75 [44.5]	1	0.07	\$46.00
<u>MRN-3CB</u>	NITRA air or water pneumatic manifold, nylon 6, rectangular, 200 psi maximum operating pressure, 3 stations, (2) 1/4in female NPT inlet(s), (3) 1/8in female NPT outlet(s), standard hole spacing.	2.50 [63.5]	1	0.11	\$51.00
<u>MRN-4CB</u>	NITRA air or water pneumatic manifold, nylon 6, rectangular, 200 psi maximum operating pressure, 4 stations, (2) 1/4in female NPT inlet(s), (4) 1/8in female NPT outlet(s), standard hole spacing.	3.25 [82.6]	1	0.13	\$57.00
<u>MRN-5CB</u>	NITRA air or water pneumatic manifold, nylon 6, rectangular, 200 psi maximum operating pressure, 5 stations, (2) 1/4in female NPT inlet(s), (5) 1/8in female NPT outlet(s), standard hole spacing.	4.00 [101.6]	1	0.16	\$60.00
<u>MRN-6CB</u>	NITRA air or water pneumatic manifold, nylon 6, rectangular, 200 psi maximum operating pressure, 6 stations, (2) 1/4in female NPT inlet(s), (6) 1/8in female NPT outlet(s), standard hole spacing.	4.75 [120.7]	1	0.19	\$62.00
<u>MRN-7CB</u>	NITRA air or water pneumatic manifold, nylon 6, rectangular, 200 psi maximum operating pressure, 7 stations, (2) 1/4in female NPT inlet(s), (7) 1/8in female NPT outlet(s), standard hole spacing.	5.50 [139.7]	1	0.24	\$67.00
<u>MRN-8CB</u>	NITRA air or water pneumatic manifold, nylon 6, rectangular, 200 psi maximum operating pressure, 8 stations, (2) 1/4in female NPT inlet(s), (8) 1/8in female NPT outlet(s), standard hole spacing.	6.25 [158.8]	1	0.25	\$71.00
<u>MRN-9CB</u>	NITRA air or water pneumatic manifold, nylon 6, rectangular, 200 psi maximum operating pressure, 9 stations, (2) 1/4in female NPT inlet(s), (9) 1/8in female NPT outlet(s), standard hole spacing.	7.00 [177.8]	1	0.30	\$74.00
<u>MRN-10CB</u>	NITRA air or water pneumatic manifold, nylon 6, rectangular, 200 psi maximum operating pressure, 10 stations, (2) 1/4in female NPT inlet(s), (10) 1/8in female NPT outlet(s), standard hole spacing.	7.75 [196.9]	1	0.32	\$76.00
<u>MRN-2DC</u>	NITRA air or water pneumatic manifold, nylon 6, rectangular, 200 psi maximum operating pressure, 2 stations, (2) 3/8in female NPT inlet(s), (2) 1/4in female NPT outlet(s), standard hole spacing.	2.13 [54.0]	1	0.13	\$51.00
<u>MRN-3DC</u>	NITRA air or water pneumatic manifold, nylon 6, rectangular, 200 psi maximum operating pressure, 3 stations, (2) 3/8in female NPT inlet(s), (3) 1/4in female NPT outlet(s), standard hole spacing.	3.00 [76.2]	1	0.18	\$57.00
<u>MRN-4DC</u>	NITRA air or water pneumatic manifold, nylon 6, rectangular, 200 psi maximum operating pressure, 4 stations, (2) 3/8in female NPT inlet(s), (4) 1/4in female NPT outlet(s), standard hole spacing.	3.88 [98.4]	1	0.23	\$61.00
<u>MRN-5DC</u>	NITRA air or water pneumatic manifold, nylon 6, rectangular, 200 psi maximum operating pressure, 5 stations, (2) 3/8in female NPT inlet(s), (5) 1/4in female NPT outlet(s), standard hole spacing.	4.75 [120.7]	1	0.30	\$67.00
<u>MRN-6DC</u>	NITRA air or water pneumatic manifold, nylon 6, rectangular, 200 psi maximum operating pressure, 6 stations, (2) 3/8in female NPT inlet(s), (6) 1/4in female NPT outlet(s), standard hole spacing.	5.63 [142.9]	1	0.34	\$72.00
<u>MRN-7DC</u>	NITRA air or water pneumatic manifold, nylon 6, rectangular, 200 psi maximum operating pressure, 7 stations, (2) 3/8in female NPT inlet(s), (7) 1/4in female NPT outlet(s), standard hole spacing.	6.50 [165.1]	1	0.41	\$74.00
<u>MRN-8DC</u>	NITRA air or water pneumatic manifold, nylon 6, rectangular, 200 psi maximum operating pressure, 8 stations, (2) 3/8in female NPT inlet(s), (9) 1/4in female NPT outlet(s), standard hole spacing.	7.38 [187.3]	1	0.45	\$76.00
<u>MRN-9DC</u>	NITRA air or water pneumatic manifold, nylon 6, rectangular, 200 psi maximum operating pressure, 9 stations, (2) 3/8in female NPT inlet(s), (9) 1/4in female NPT outlet(s), standard hole spacing.	8.25 [209.6]	1	0.54	\$80.00
<u>MRN-10DC</u>	NITRA air or water pneumatic manifold, nylon 6, rectangular, 200 psi maximum operating pressure, 10 stations, (2) 3/8in female NPT inlet(s), (10) 1/4in female NPT outlet(s), standard hole spacing.	9.13 [231.8]	1	0.59	\$83.00



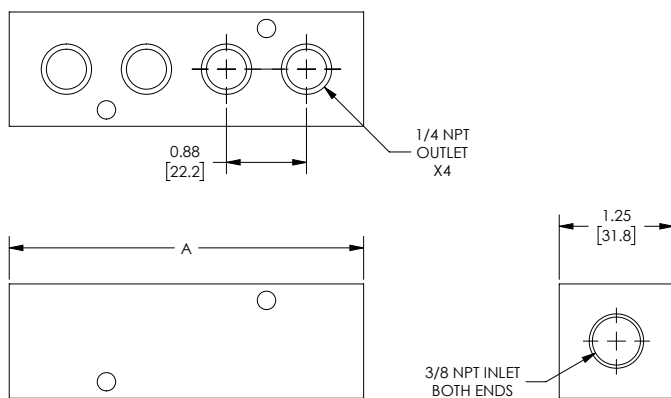
Nylon Manifolds

Dimensions

inches [mm]



Part No. MRN-xCB



Part No. MRN-xDC

See our website www.AutomationDirect.com for complete Engineering drawings.