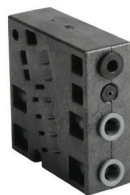




Pneumatic Modular Air Pilot Valves – BVS Series



BVS Single Air Pilot



BVS Double Air Pilot

NITRA pneumatic BVS series modular piloted valves are body ported 4-port (4-way) valves. Models are single pilot, spring return or double pilot operated.

Features

- Body ported 4-port (4-way) spool valves
- 1/4" or 6mm push-to-connect inlet/outlet ports
- 5/32" (4mm) push-to-connect pilot ports
- Flow coefficient (Cv) 0.8
- 2-position
- 2-year warranty



Valve Symbols

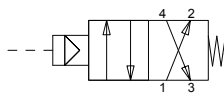


Diagram A

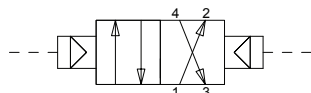


Diagram B

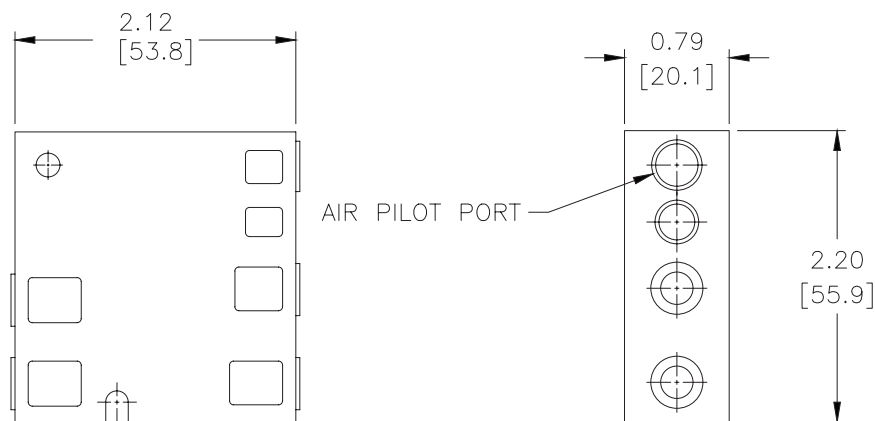
BVS 4-Way Air Pilot Specifications	
Models	BVS-46M-2P
Price	\$29.00
Weight (lbs)	0.13
Acting	Spool (2-Position), double air pilot
Diagram	B
Port Size	(1) 6mm inlet (2) 6mm outlet (1) 6mm exhaust (2) 5/32" (4mm) pilot
Orifice Size	0.2" [5.0 mm] (Cv = 0.8)
Fluid	Air or Inert Gas (to be filtered by 40μ filter element)
Min. / Max. Pressure	30psi (2bar) - 120psi (8.3 bar)
Vacuum	Air pilot models can be used in vacuum applications with external air signal to pilot ports.
Body	Glass Reinforced Thermoplastic
Expected Life	20,000,000 cycles at max 3 cycles/second
Temperature - Operation and Storage	0~120°F (-18~49°C)
Lubrication	Not Required
Protection	IP 65



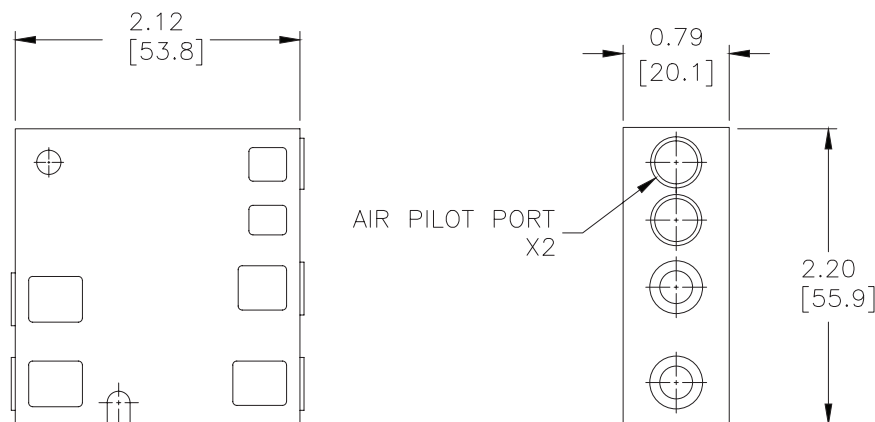
Pneumatic Modular Air Pilot Valves – BVS Series

Dimensions

inches [mm]



BVS Single Air Pilot



BVS Double Air Pilot

See our website www.AutomationDirect.com for complete Engineering drawings.