



# L-Series Rodless Pneumatic Cylinder Accessories

NITRA L-Series accessories include end mounting brackets and center support brackets for longer cylinders. Refer to load chart in this section to determine if a center support is required. Sensor clamp brackets are required for 16mm and 25mm bore cylinders.

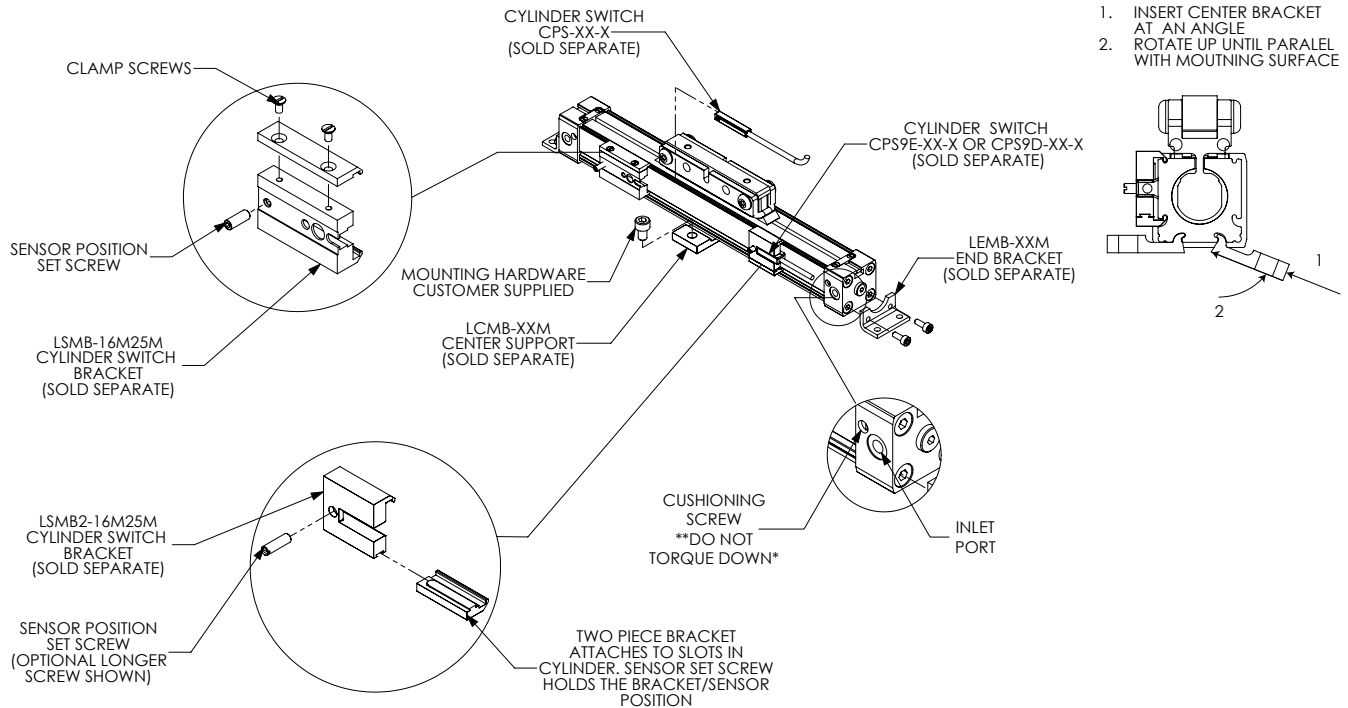
NITRA L-Series Rodless Pneumatic Cylinder Accessories				
Item	Part No.	Description	Weight (lbs)	Price
	<b><u>LEMB-16M</u></b>	NITRA mounting bracket, end, stainless steel. For use with L16M series rodless cylinders. Mounting screws included.	0.03	\$5.50
	<b><u>LEMB-25M</u></b>	NITRA mounting bracket, end, stainless steel. For use with L25M series rodless cylinders. Mounting screws included.	0.07	\$6.00
	<b><u>LEMB-32M</u></b>	NITRA mounting bracket, end, aluminum. For use with L32M series rodless cylinders. Mounting screws included.	0.2	\$21.50
	<b><u>LEMB-40M</u></b>	NITRA mounting bracket, end, aluminum. For use with L40M series rodless cylinders. Mounting screws included.	0.25	\$29.50
	<b><u>LCMB-16M</u></b>	NITRA mounting bracket, center, aluminum. For use with L16M series rodless cylinders.	0.02	\$12.50
	<b><u>LCMB-25M</u></b>	NITRA mounting bracket, center, aluminum. For use with L25M series rodless cylinders.	0.02	\$14.00
	<b><u>LCMB-32M</u></b>	NITRA mounting bracket, center, aluminum. For use with L32M series rodless cylinders. Mounting screws included.	0.16	\$29.00
	<b><u>LCMB-40M</u></b>	NITRA mounting bracket, center, aluminum. For use with L40M series rodless cylinders. Mounting screws included.	0.23	\$30.00
	<b><u>LSMB-16M25M</u></b>	NITRA mounting bracket, switch, aluminum. For use with L16M and L25M series rodless cylinders and CPS switches. Mounting screws included.	0.03	\$12.00
	<b><u>LSMB2-16M25M</u></b>	NITRA mounting bracket, switch, aluminum. For use with L16M and L25M series rodless cylinders and CPS9D and CPS9E switches. Mounting screw included.	0.02	\$14.00

See our website [www.AutomationDirect.com](http://www.AutomationDirect.com) for complete Engineering drawings



# L-Series Rodless Pneumatic Cylinder Accessories

## Mounting guidelines for 16mm and 25mm bore cylinders



## Mounting guidelines for 32mm and 40mm bore cylinders

