

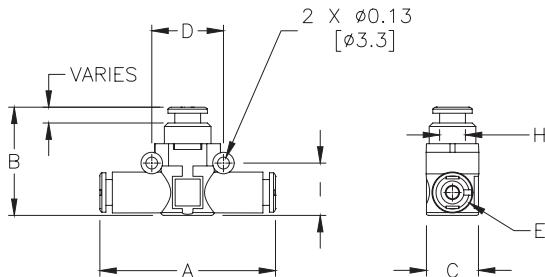


# Inline Pressure Indicators and Quick Exhaust Valves

**NITRA** pneumatic push-to-connect inline pressure indicators have a technopolymer body and nickel-plated brass internal parts, with a range of 29 to 145 psi. When pressure is off, the indicator is clear. When pressure is on, a colored indicator appears.

## Features

- Works with flexible pneumatic tubing
- Easily added to existing circuits
- Green or orange indicator buttons
- Two-year warranty

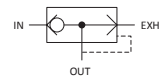
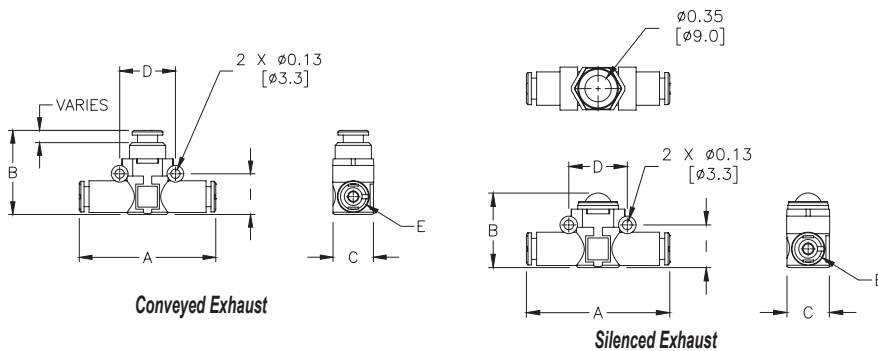


NITRA Inline Pressure Indicators												
Inch Sizes - dimensions in inches (in.)												
Part No.	Price	Tube Size	Indicator Color	ø	A	B	C	D	H	I	Operating Pressure Range (psi)	Package Weight (lbs)
<b>PMU14A</b>	\$15.00	1/4 in. x 1/4 in.	Orange	1/4	1.85	1.46	0.58	0.79	M15x1	0.57	29-145	0.1
<b>PMU14G</b>	\$15.00	1/4 in. x 1/4 in.	Green	1/4	1.85	1.46	0.58	0.79	M15x1	0.57	29-145	0.1
<b>PMU516A</b>	\$16.00	5/16 in. [8mm] x 5/16 in. [8mm]	Orange	5/16	2.18	1.61	0.74	0.94	M15x1	0.74	29-145	0.1
<b>PMU516G</b>	\$16.00	5/16 in. [8mm] x 5/16 in. [8mm]	Green	5/16	2.18	1.61	0.74	0.94	M15x1	0.74	29-145	0.1

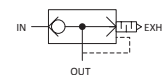
**NITRA** pneumatic push-to-connect in-line quick exhaust valves have a technopolymer body and nickel-plated brass valve insert, with a range of 7 to 150 psi. Normal flow is from inlet to outlet ports. Reversing flow from outlet is directed to exhaust port. These valve are ideal for use with pneumatic actuators that require a very fast stroke speed.

## Features

- Works with flexible pneumatic tubing
- Easily added to existing circuits
- Ideal for use with fast stroke air cylinders
- Two-year warranty



Conveyed Exhaust



Silenced Exhaust

NITRA Inline Quick Exhaust Valves													
Inch Sizes - dimensions in inches (in.)													
Part No.	Price	Tube Size	Exhaust	A	B	C	D	E	I	Inlet Pressure Range (psi)	Inlet Flow Rate (scfm)*	Exhaust Flow Rate (scfm)*	Package Weight (lbs)
<b>QEU14</b>	\$11.00	1/4 in. x 1/4 in. x 1/4 in.	Conveyed	1.85	1.14	0.58	0.79	0.45	0.57	14.5-145	9.5	24.7	0.1
<b>QEU516</b>	\$11.00	5/16 in. [8mm] x 5/16 in. [8mm] x 5/16 in. [8mm]	Conveyed	2.18	1.37	0.74	0.94	0.54	0.74	14.5-145	14	35.3	0.1
<b>QEU14-S</b>	\$11.00	1/4 in. x 1/4 in.	Silenced	1.85	1.0	0.58	0.79	0.45	0.57	14.5-145	9.5	24.7	0.1
<b>QEU516-S</b>	\$12.00	5/16 in. x 5/16 in.	Silenced	2.18	1.24	0.74	0.94	0.54	0.74	14.5-145	14	35.3	0.1

\*Flow conditions: 90psi inlet pressure, 14.5 psi ΔP

See our website [www.AutomationDirect.com](http://www.AutomationDirect.com) for complete Engineering drawings.



# Special Purpose Push-to-Connect Pneumatic Fittings

**NITRA** pneumatic inline fittings are special purpose products mounted inline with pneumatic circuits. With these small, highly efficient components it is possible to perform many pneumatic functions at any point in a circuit.

- Ultra-modular
- Components can be connected in parallel
- Push-to-Connect: No tools required!
- Made of lightweight technopolymer
- Stem adapters connect push-to-connect fittings to NPT ports



*(Fasteners shown not included)*



**Inline Pressure Regulators**  
from \$20.25



**Inline Pressure Gauges**  
from \$17.75



**Inline Pressure Indicators**  
from \$11.75



**Inline Manual Shutoff Valves**  
from \$11.25



**Inline Quick Exhaust Valves**  
from \$8.75



**Stem Adapters**  
from \$3.25