



# H-Series Pneumatic Cylinder Accessories

H-Series Pneumatic Cylinder Accessories				
Part Number	Description	Pcs/Pkg	Wt (lb)	Price
<b><u>HRC-12M</u></b>	NITRA cylinder rod clevis, plated steel, M5 x 0.8 thread. For use with 12 mm H-series cylinders. Male adapter and hex nut included.	1	0.1	\$14.00
<b><u>HRC-16M</u></b>	NITRA cylinder rod clevis, plated steel, M6 x 1.0 thread. For use with 16 mm H-series cylinders. Male adapter and hex nut included.	1	0.1	\$15.00
<b><u>HRC-20M</u></b>	NITRA cylinder rod clevis, plated steel, M8 x 1.25 thread. For use with 20 mm H-series cylinders. Male adapter and hex nut included.	1	0.1	\$15.50
<b><u>HRC-25M</u></b>	NITRA cylinder rod clevis, plated steel, M10 x 1.25 thread. For use with 25 mm H-series cylinders. Male adapter and hex nut included.	1	0.2	\$16.00
<b><u>HRC-32M</u></b>	NITRA cylinder rod clevis, cast iron, M14 x 1.5 thread. For use with 32 mm H-series cylinders. Male adapter and hex nut included.	1	0.3	\$19.50
<b><u>HRC-40M</u></b>	NITRA cylinder rod clevis, cast iron, M14 x 1.5 thread. For use with 40 mm H-series cylinders. Male adapter and hex nut included.	1	0.3	\$19.50
<b><u>HRC-50M</u></b>	NITRA cylinder rod clevis, cast iron, M18 x 1.5 thread. For use with 50 mm H-series cylinders. Male adapter and hex nut included.	1	0.6	\$25.00
<b><u>HRC-63M</u></b>	NITRA cylinder rod clevis, cast iron, M18 x 1.5 thread. For use with 63 mm H-series cylinders. Male adapter and hex nut included.	1	0.6	\$25.50
<b><u>HRC-80M</u></b>	NITRA cylinder rod clevis, cast iron, M22 x 1.5 thread. For use with 80 mm H-series cylinders. Male adapter and hex nut included.	1	1.5	\$32.50
<b><u>HRC-100M</u></b>	NITRA cylinder rod clevis, cast iron, M26 x 1.5 thread. For use with 100 mm H-series cylinders. Male adapter and hex nut included.	1	2.0	\$38.00
<b><u>HMA-12M</u></b>	NITRA cylinder male adapter, stainless steel, M5 x 0.8 thread. For use with 12 mm H-series cylinders. Hex nut included.	1	0.1	\$8.75
<b><u>HMA-16M</u></b>	NITRA cylinder male adapter, stainless steel, M6 x 1.0 thread. For use with 16 mm H-series cylinders. Hex nut included.	1	0.1	\$8.75
<b><u>HMA-20M</u></b>	NITRA cylinder male adapter, stainless steel, M8 x 1.25 thread. For use with 20 mm H-series cylinders. Hex nut included.	1	0.1	\$9.25
<b><u>HMA-25M</u></b>	NITRA cylinder male adapter, stainless steel, M10 x 1.25 thread. For use with 25 mm H-series cylinders. Hex nut included.	1	0.1	\$9.50
<b><u>HMA-32M</u></b>	NITRA cylinder male adapter, stainless steel, M14 x 1.5 thread. For use with 32 mm H-series cylinders. Hex nut included.	1	0.1	\$10.50
<b><u>HMA-40M</u></b>	NITRA cylinder male adapter, stainless steel, M14 x 1.5 thread. For use with 40 mm H-series cylinders. Hex nut included.	1	0.1	\$10.50
<b><u>HMA-50M</u></b>	NITRA cylinder male adapter, stainless steel, M18 x 1.5 thread. For use with 50 mm H-series cylinders. Hex nut included.	1	0.2	\$12.00
<b><u>HMA-63M</u></b>	NITRA cylinder male adapter, stainless steel, M18 x 1.5 thread. For use with 63 mm H-series cylinders. Hex nut included.	1	0.2	\$12.00
<b><u>HMA-80M</u></b>	NITRA cylinder male adapter, stainless steel, M22 x 1.5 thread. For use with 80 mm H-series cylinders. Hex nut included.	1	0.4	\$14.50
<b><u>HMA-100M</u></b>	NITRA cylinder male adapter, stainless steel, M26 x 1.5 thread. For use with 100 mm H-series cylinders. Hex nut included.	1	0.5	\$17.00
<b><u>HFC-12M</u></b>	NITRA cylinder rear clevis bracket, aluminum. For use with 12 mm H-series cylinders. Mounting hardware and pivot pin included.	1	0.1	\$14.00
<b><u>HFC-16M</u></b>	NITRA cylinder rear clevis bracket, aluminum. For use with 16 mm H-series cylinders. Mounting hardware and pivot pin included.	1	0.1	\$14.50
<b><u>HFC-20M</u></b>	NITRA cylinder rear clevis bracket, aluminum. For use with 20 mm H-series cylinders. Mounting hardware and pivot pin included.	1	0.2	\$16.00
<b><u>HFC-25M</u></b>	NITRA cylinder rear clevis bracket, aluminum. For use with 25 mm H-series cylinders. Mounting hardware and pivot pin included.	1	0.2	\$19.00
<b><u>HFC-32M</u></b>	NITRA cylinder rear clevis bracket, cast iron. For use with 32 mm H-series cylinders. Mounting hardware and pivot pin included.	1	0.4	\$22.50
<b><u>HFC-40M</u></b>	NITRA cylinder rear clevis bracket, cast iron. For use with 40 mm H-series cylinders. Mounting hardware and pivot pin included.	1	0.4	\$22.50
<b><u>HFC-50M</u></b>	NITRA cylinder rear clevis bracket, cast iron. For use with 50 mm H-series cylinders. Mounting hardware and pivot pin included.	1	0.8	\$31.00
<b><u>HFC-63M</u></b>	NITRA cylinder rear clevis bracket, cast iron. For use with 63 mm H-series cylinders. Mounting hardware and pivot pin included.	1	1.3	\$31.00
<b><u>HFC-80M</u></b>	NITRA cylinder rear clevis bracket, cast iron. For use with 80 mm H-series cylinders. Mounting hardware and pivot pin included.	1	2.3	\$41.50
<b><u>HFC-100M</u></b>	NITRA cylinder rear clevis bracket, cast iron. For use with 100 mm H-series cylinders. Mounting hardware and pivot pin included.	1	3.8	\$46.50



# H-Series Pneumatic Cylinder Accessories

## Rod Clevis



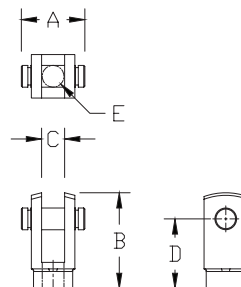
Part no. [HRC-20M](#)



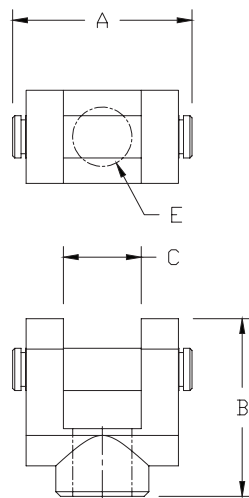
Part no. [HRC-32M](#)

## Dimensions

mm [inches]



HRC-12M - HRC-25M



HRC-32M - HRC-100M



Note: Comes with Pivot Pin installed. Includes Rod Male Adapter (see below)

Rod Clevis Dimension Table					
Part #	A	B	C	D	E
<a href="#">HRC-12M</a>	14.6 [0.57]	22.0 [0.87]	5.3 [0.21]	16.0 [0.63]	M5x0.8
<a href="#">HRC-16M</a>	16.8 [0.66]	28.0 [1.10]	6.6 [0.26]	21.0 [0.83]	M6x1.0
<a href="#">HRC-20M</a>	21.0 [0.83]	34.0 [1.34]	8.3 [0.33]	25.0 [0.98]	M8x1.25
<a href="#">HRC-25M</a>	26.4 [1.04]	41.0 [1.61]	10.3 [0.41]	30.0 [1.18]	M10x1.5
<a href="#">HRC-32M</a>	42.4 [1.67]	42.0 [1.65]	18.4 [0.72]	30.0 [1.18]	M14x1.5
<a href="#">HRC-40M</a>	42.4 [1.67]	42.0 [1.65]	18.4 [0.72]	30.0 [1.18]	M14x1.5
<a href="#">HRC-50M</a>	50.4 [1.98]	56.0 [2.20]	22.4 [0.88]	40.0 [1.57]	M18x1.5
<a href="#">HRC-63M</a>	50.4 [1.98]	56.0 [2.20]	22.4 [0.88]	40.0 [1.57]	M18x1.5
<a href="#">HRC-80M</a>	63.6 [2.50]	71.0 [2.80]	28.4 [1.12]	50.0 [1.97]	M22x1.5
<a href="#">HRC-100M</a>	72.6 [2.86]	79.0 [3.11]	32.4 [1.28]	55.0 [2.17]	M26x1.5

## Rod Male Adapter

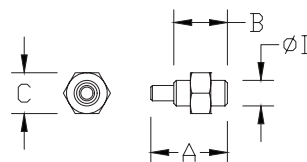


Part no. [HMA-32M](#)

Rod Male Adapter Dimension Table				
Part #	A	B	C	D
<a href="#">HMA-12M</a>	15.0 [0.59]	10.5 [0.41]	8.0 [0.31]	M5x0.8
<a href="#">HMA-16M</a>	18.0 [0.71]	12.0 [0.47]	10.0 [0.39]	M6x1.0
<a href="#">HMA-20M</a>	19.5 [0.77]	14.0 [0.55]	12.0 [0.47]	M8x1.25
<a href="#">HMA-25M</a>	26.5 [1.04]	17.5 [0.69]	17.0 [0.67]	M10x1.25
<a href="#">HMA-32M</a>	31.5 [1.24]	21.5 [0.85]	19.0 [0.75]	M14x1.5
<a href="#">HMA-40M</a>	31.5 [1.24]	21.5 [0.85]	19.0 [0.75]	M14x1.5
<a href="#">HMA-50M</a>	36.5 [1.44]	25.5 [1.00]	27.0 [1.06]	M18x1.5
<a href="#">HMA-63M</a>	36.5 [1.44]	25.5 [1.00]	27.0 [1.06]	M18x1.5
<a href="#">HMA-80M</a>	49.5 [1.95]	33.5 [1.32]	32.0 [1.26]	M22x1.5
<a href="#">HMA-100M</a>	51.5 [2.03]	31.5 [1.24]	36.0 [1.42]	M26x1.5

## Dimensions

mm [inches]



HMA-12M - HMA-100M

See our website [www.AutomationDirect.com](http://www.AutomationDirect.com) for complete Engineering drawings.



# H-Series Pneumatic Cylinder Accessories

## Female Rear Clevis



Part no. [HFC-20M](#)

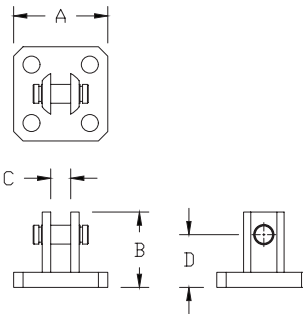


Part no. [HFC-32M](#)



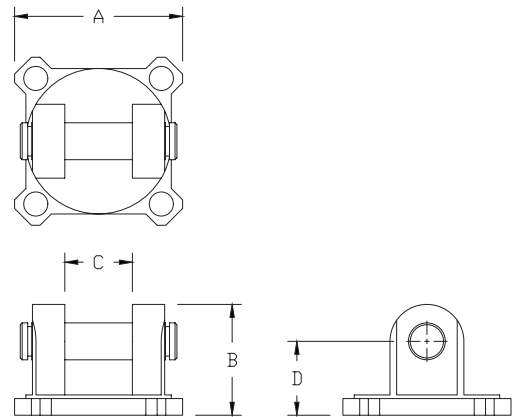
comes with Pivot Pin installed. Mount-ware Included.

### Dimensions mm [inches]



HFC-12M - HFC-25M

Female Rear Clevis Dimension Table				
Part #	A	B	C	D
<a href="#">HFC-12M</a>	25.0 [0.98]	20.0 [0.79]	5.3 [0.21]	14.0 [0.55]
<a href="#">HFC-16M</a>	29.0 [1.14]	21.0 [0.83]	6.8 [0.27]	15.0 [0.59]
<a href="#">HFC-20M</a>	36.0 [1.42]	27.0 [1.06]	8.3 [0.33]	18.0 [0.71]
<a href="#">HFC-25M</a>	40.0 [1.57]	30.0 [1.18]	10.3 [0.41]	20.0 [0.79]
<a href="#">HFC-32M</a>	45.5 [1.79]	30.0 [1.18]	18.3 [0.72]	20.0 [0.79]
<a href="#">HFC-40M</a>	53.5 [2.11]	32.0 [1.26]	18.3 [0.72]	22.0 [0.87]
<a href="#">HFC-50M</a>	64.5 [2.54]	42.0 [1.65]	22.3 [0.88]	28.0 [1.10]
<a href="#">HFC-63M</a>	77.5 [3.05]	44.0 [1.73]	22.3 [0.88]	30.0 [1.18]
<a href="#">HFC-80M</a>	98.5 [3.88]	56.0 [2.20]	28.3 [1.11]	38.0 [1.50]
<a href="#">HFC-100M</a>	117.5 [4.63]	67.0 [2.64]	32.3 [1.27]	45.0 [1.77]



HFC-32M - HFC-100M

See our website [www.AutomationDirect.com](http://www.AutomationDirect.com) for complete Engineering drawings.