



H-Series Pneumatic Cylinder Accessories

| H-Series Pneumatic Cylinder Accessories | | | | |
|---|---|---------|---------|---------|
| Part Number | Description | Pcs/Pkg | Wt (lb) | Price |
| <u>HRC-12M</u> | NITRA cylinder rod clevis, plated steel, M5 x 0.8 thread. For use with 12 mm H-series cylinders. Male adapter and hex nut included. | 1 | 0.1 | \$14.00 |
| <u>HRC-16M</u> | NITRA cylinder rod clevis, plated steel, M6 x 1.0 thread. For use with 16 mm H-series cylinders. Male adapter and hex nut included. | 1 | 0.1 | \$15.00 |
| <u>HRC-20M</u> | NITRA cylinder rod clevis, plated steel, M8 x 1.25 thread. For use with 20 mm H-series cylinders. Male adapter and hex nut included. | 1 | 0.1 | \$15.50 |
| <u>HRC-25M</u> | NITRA cylinder rod clevis, plated steel, M10 x 1.25 thread. For use with 25 mm H-series cylinders. Male adapter and hex nut included. | 1 | 0.2 | \$16.00 |
| <u>HRC-32M</u> | NITRA cylinder rod clevis, cast iron, M14 x 1.5 thread. For use with 32 mm H-series cylinders. Male adapter and hex nut included. | 1 | 0.3 | \$19.50 |
| <u>HRC-40M</u> | NITRA cylinder rod clevis, cast iron, M14 x 1.5 thread. For use with 40 mm H-series cylinders. Male adapter and hex nut included. | 1 | 0.3 | \$19.50 |
| <u>HRC-50M</u> | NITRA cylinder rod clevis, cast iron, M18 x 1.5 thread. For use with 50 mm H-series cylinders. Male adapter and hex nut included. | 1 | 0.6 | \$25.00 |
| <u>HRC-63M</u> | NITRA cylinder rod clevis, cast iron, M18 x 1.5 thread. For use with 63 mm H-series cylinders. Male adapter and hex nut included. | 1 | 0.6 | \$25.50 |
| <u>HRC-80M</u> | NITRA cylinder rod clevis, cast iron, M22 x 1.5 thread. For use with 80 mm H-series cylinders. Male adapter and hex nut included. | 1 | 1.5 | \$32.50 |
| <u>HRC-100M</u> | NITRA cylinder rod clevis, cast iron, M26 x 1.5 thread. For use with 100 mm H-series cylinders. Male adapter and hex nut included. | 1 | 2.0 | \$38.00 |
| <u>HMA-12M</u> | NITRA cylinder male adapter, stainless steel, M5 x 0.8 thread. For use with 12 mm H-series cylinders. Hex nut included. | 1 | 0.1 | \$8.75 |
| <u>HMA-16M</u> | NITRA cylinder male adapter, stainless steel, M6 x 1.0 thread. For use with 16 mm H-series cylinders. Hex nut included. | 1 | 0.1 | \$8.75 |
| <u>HMA-20M</u> | NITRA cylinder male adapter, stainless steel, M8 x 1.25 thread. For use with 20 mm H-series cylinders. Hex nut included. | 1 | 0.1 | \$9.25 |
| <u>HMA-25M</u> | NITRA cylinder male adapter, stainless steel, M10 x 1.25 thread. For use with 25 mm H-series cylinders. Hex nut included. | 1 | 0.1 | \$9.50 |
| <u>HMA-32M</u> | NITRA cylinder male adapter, stainless steel, M14 x 1.5 thread. For use with 32 mm H-series cylinders. Hex nut included. | 1 | 0.1 | \$10.50 |
| <u>HMA-40M</u> | NITRA cylinder male adapter, stainless steel, M14 x 1.5 thread. For use with 40 mm H-series cylinders. Hex nut included. | 1 | 0.1 | \$10.50 |
| <u>HMA-50M</u> | NITRA cylinder male adapter, stainless steel, M18 x 1.5 thread. For use with 50 mm H-series cylinders. Hex nut included. | 1 | 0.2 | \$12.00 |
| <u>HMA-63M</u> | NITRA cylinder male adapter, stainless steel, M18 x 1.5 thread. For use with 63 mm H-series cylinders. Hex nut included. | 1 | 0.2 | \$12.00 |
| <u>HMA-80M</u> | NITRA cylinder male adapter, stainless steel, M22 x 1.5 thread. For use with 80 mm H-series cylinders. Hex nut included. | 1 | 0.4 | \$14.50 |
| <u>HMA-100M</u> | NITRA cylinder male adapter, stainless steel, M26 x 1.5 thread. For use with 100 mm H-series cylinders. Hex nut included. | 1 | 0.5 | \$17.00 |
| <u>HFC-12M</u> | NITRA cylinder rear clevis bracket, aluminum. For use with 12 mm H-series cylinders. Mounting hardware and pivot pin included. | 1 | 0.1 | \$14.00 |
| <u>HFC-16M</u> | NITRA cylinder rear clevis bracket, aluminum. For use with 16 mm H-series cylinders. Mounting hardware and pivot pin included. | 1 | 0.1 | \$14.50 |
| <u>HFC-20M</u> | NITRA cylinder rear clevis bracket, aluminum. For use with 20 mm H-series cylinders. Mounting hardware and pivot pin included. | 1 | 0.2 | \$16.00 |
| <u>HFC-25M</u> | NITRA cylinder rear clevis bracket, aluminum. For use with 25 mm H-series cylinders. Mounting hardware and pivot pin included. | 1 | 0.2 | \$19.00 |
| <u>HFC-32M</u> | NITRA cylinder rear clevis bracket, cast iron. For use with 32 mm H-series cylinders. Mounting hardware and pivot pin included. | 1 | 0.4 | \$22.50 |
| <u>HFC-40M</u> | NITRA cylinder rear clevis bracket, cast iron. For use with 40 mm H-series cylinders. Mounting hardware and pivot pin included. | 1 | 0.4 | \$22.50 |
| <u>HFC-50M</u> | NITRA cylinder rear clevis bracket, cast iron. For use with 50 mm H-series cylinders. Mounting hardware and pivot pin included. | 1 | 0.8 | \$31.00 |
| <u>HFC-63M</u> | NITRA cylinder rear clevis bracket, cast iron. For use with 63 mm H-series cylinders. Mounting hardware and pivot pin included. | 1 | 1.3 | \$31.00 |
| <u>HFC-80M</u> | NITRA cylinder rear clevis bracket, cast iron. For use with 80 mm H-series cylinders. Mounting hardware and pivot pin included. | 1 | 2.3 | \$41.50 |
| <u>HFC-100M</u> | NITRA cylinder rear clevis bracket, cast iron. For use with 100 mm H-series cylinders. Mounting hardware and pivot pin included. | 1 | 3.8 | \$46.50 |



H-Series Pneumatic Cylinder Accessories

Rod Clevis



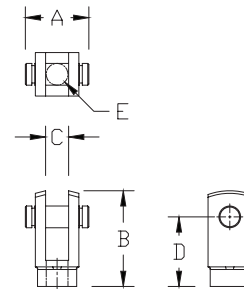
Part no. [HRC-20M](#)



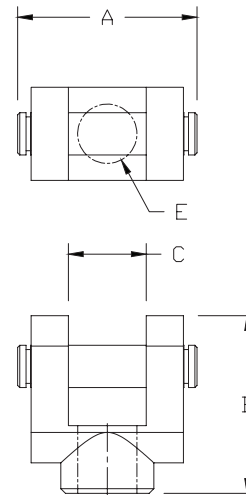
Part no. [HRC-32M](#)

Dimensions

mm [inches]



HRC-12M - HRC-25M



HRC-32M - HRC-100M



Note: Comes with Pivot Pin installed. Includes Rod Male Adapter (see below)

| Rod Clevis Dimension Table | | | | | |
|----------------------------|-------------|-------------|-------------|-------------|---------|
| Part # | A | B | C | D | E |
| HRC-12M | 14.6 [0.57] | 22.0 [0.87] | 5.3 [0.21] | 16.0 [0.63] | M5x0.8 |
| HRC-16M | 16.8 [0.66] | 28.0 [1.10] | 6.6 [0.26] | 21.0 [0.83] | M6x1.0 |
| HRC-20M | 21.0 [0.83] | 34.0 [1.34] | 8.3 [0.33] | 25.0 [0.98] | M8x1.25 |
| HRC-25M | 26.4 [1.04] | 41.0 [1.61] | 10.3 [0.41] | 30.0 [1.18] | M10x1.5 |
| HRC-32M | 42.4 [1.67] | 42.0 [1.65] | 18.4 [0.72] | 30.0 [1.18] | M14x1.5 |
| HRC-40M | 42.4 [1.67] | 42.0 [1.65] | 18.4 [0.72] | 30.0 [1.18] | M14x1.5 |
| HRC-50M | 50.4 [1.98] | 56.0 [2.20] | 22.4 [0.88] | 40.0 [1.57] | M18x1.5 |
| HRC-63M | 50.4 [1.98] | 56.0 [2.20] | 22.4 [0.88] | 40.0 [1.57] | M18x1.5 |
| HRC-80M | 63.6 [2.50] | 71.0 [2.80] | 28.4 [1.12] | 50.0 [1.97] | M22x1.5 |
| HRC-100M | 72.6 [2.86] | 79.0 [3.11] | 32.4 [1.28] | 55.0 [2.17] | M26x1.5 |

Rod Male Adapter

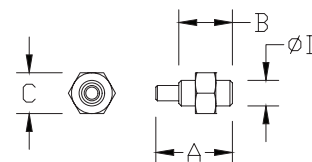


Part no. [HMA-32M](#)

| Rod Male Adapter Dimension Table | | | | |
|----------------------------------|-------------|-------------|-------------|----------|
| Part # | A | B | C | D |
| HMA-12M | 15.0 [0.59] | 10.5 [0.41] | 8.0 [0.31] | M5x0.8 |
| HMA-16M | 18.0 [0.71] | 12.0 [0.47] | 10.0 [0.39] | M6x1.0 |
| HMA-20M | 19.5 [0.77] | 14.0 [0.55] | 12.0 [0.47] | M8x1.25 |
| HMA-25M | 26.5 [1.04] | 17.5 [0.69] | 17.0 [0.67] | M10x1.25 |
| HMA-32M | 31.5 [1.24] | 21.5 [0.85] | 19.0 [0.75] | M14x1.5 |
| HMA-40M | 31.5 [1.24] | 21.5 [0.85] | 19.0 [0.75] | M14x1.5 |
| HMA-50M | 36.5 [1.44] | 25.5 [1.00] | 27.0 [1.06] | M18x1.5 |
| HMA-63M | 36.5 [1.44] | 25.5 [1.00] | 27.0 [1.06] | M18x1.5 |
| HMA-80M | 49.5 [1.95] | 33.5 [1.32] | 32.0 [1.26] | M22x1.5 |
| HMA-100M | 51.5 [2.03] | 31.5 [1.24] | 36.0 [1.42] | M26x1.5 |

Dimensions

mm [inches]



HMA-12M - HMA-100M

See our website www.AutomationDirect.com for complete Engineering drawings.



H-Series Pneumatic Cylinder Accessories

Female Rear Clevis



Part no. [HFC-20M](#)

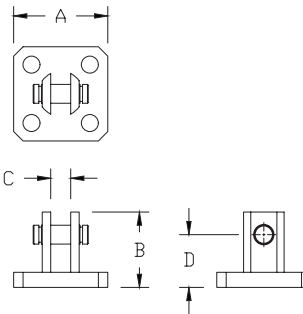


Part no. [HFC-32M](#)

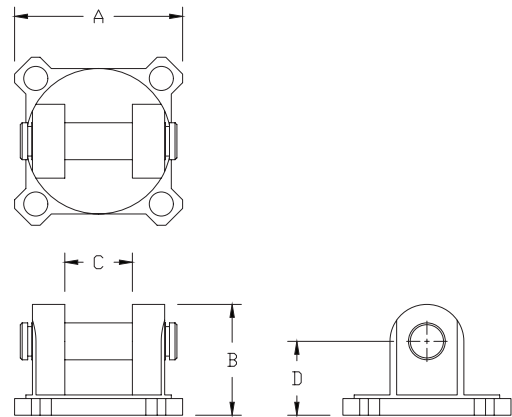


comes with Pivot Pin installed. Mount-ware Included.

Dimensions mm [inches]



HFC-12M - HFC-25M



HFC-32M - HFC-100M

| Female Rear Clevis Dimension Table | | | | |
|------------------------------------|--------------|-------------|-------------|-------------|
| Part # | A | B | C | D |
| HFC-12M | 25.0 [0.98] | 20.0 [0.79] | 5.3 [0.21] | 14.0 [0.55] |
| HFC-16M | 29.0 [1.14] | 21.0 [0.83] | 6.8 [0.27] | 15.0 [0.59] |
| HFC-20M | 36.0 [1.42] | 27.0 [1.06] | 8.3 [0.33] | 18.0 [0.71] |
| HFC-25M | 40.0 [1.57] | 30.0 [1.18] | 10.3 [0.41] | 20.0 [0.79] |
| HFC-32M | 45.5 [1.79] | 30.0 [1.18] | 18.3 [0.72] | 20.0 [0.79] |
| HFC-40M | 53.5 [2.11] | 32.0 [1.26] | 18.3 [0.72] | 22.0 [0.87] |
| HFC-50M | 64.5 [2.54] | 42.0 [1.65] | 22.3 [0.88] | 28.0 [1.10] |
| HFC-63M | 77.5 [3.05] | 44.0 [1.73] | 22.3 [0.88] | 30.0 [1.18] |
| HFC-80M | 98.5 [3.88] | 56.0 [2.20] | 28.3 [1.11] | 38.0 [1.50] |
| HFC-100M | 117.5 [4.63] | 67.0 [2.64] | 32.3 [1.27] | 45.0 [1.77] |

See our website www.AutomationDirect.com for complete Engineering drawings.