



Pneumatic Gripper - Angular (Side Mount Grip)

Single Acting - Normally Open



KA06MSA-M

NITRA Pneumatics grippers are an excellent choice for many automation applications. They are available in both parallel and angular travels in seven different body sizes. Grippers are either double acting, single acting normally closed or single acting normally open. Anodized aluminum bodies include integral mounting slots for position switches.

Features

- Six sizes available (6 to 32mm bore)
- Double acting or single acting N.O.
- Anodized aluminum bodies
- Position switch ready with integral mounting slots



NITRA Pneumatic Gripper - Angular - Normally Open										
Part No.	Description	Style	Action	Size - Bore (mm)	Position	Grip	Body	Port(s)	Price	Weight (lbs)
<u>KA06MSA-M</u>	NITRA pneumatic gripper	Angular	Single acting, normally open	6	30 degrees open, -10 degrees closed	Side mount grip	Anodized aluminum	M3 x 0.5	\$119.00	0.1
<u>KA10MSA-M</u>				10					\$165.00	0.2
<u>KA16MSA-M</u>				16				M5 x 0.8	\$172.00	0.3
<u>KA20MSA-M</u>				20					\$207.00	0.5
<u>KA25MSA-M</u>				25					\$231.00	1.0
<u>KA32MSA-M</u>				32					\$255.00	1.9

NITRA Pneumatic Gripper Specifications		
Fluid		Air (clean/dry)
Pressure Range	6mm	45 to 101 psig (3.10 to 6.97 bar)
	10mm to 32mm	36 to 101 psig (2.48 to 6.97 bar)
Proof Pressure		175 psig
Temperature Range		-4°F to 160°F (-20°C to 60°C)
Lubrication		Cylinder: not required - Jaws: grease regularly
Cushion Type		Bumper
Integrated Flow Control	6mm	N/A
	10mm to 32mm	Standard - flow control in closing direction
Maximum Frequency		180 cycles/min
Port Size		M3 x 0.5 (6mm to 10mm units) M5 x 0.8 (16mm to 32mm units)
Sensor Switch Compatibility		Nitra CPS9H-xx-x or CPS9C-xx-x
Includes		Magnet
Approvals		None



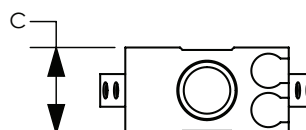
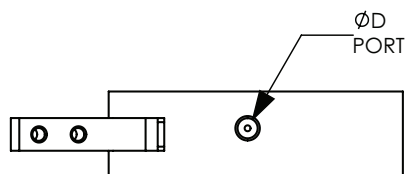
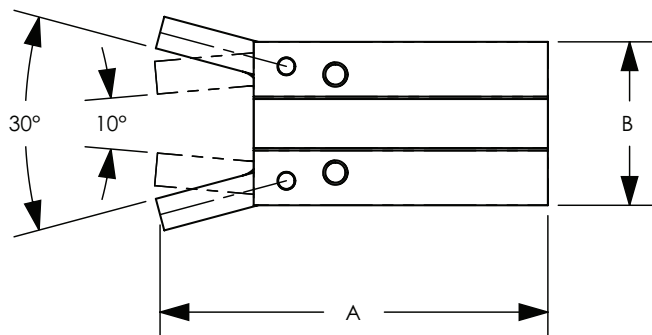
Click the above icon or scan the QR code to be taken to www.automationdirect.com/selectors/pneumaticgripper for our online Gripper Configuration Tool for further selection assistance.



Pneumatic Gripper - Angular (Side Mount Grip)

Dimensions

mm [inches]



Pneumatic Gripper Dimensions				
Part #	A	B	C	ØD
<u>KA06MSA-M</u>	47.5 [1.87]	20.0 [0.79]	10.5 [0.41]	M3 x 0.5
<u>KA10MSA-M</u>	52.5 [2.07]	23.0 [0.91]	16.5 [0.65]	M3 x 0.5
<u>KA16MSA-M</u>	62.5 [2.46]	30.5 [1.20]	23.5 [0.93]	M5 x 0.8
<u>KA20MSA-M</u>	78.0 [3.07]	42.0 [1.65]	27.5 [1.08]	M5 x 0.8
<u>KA25MSA-M</u>	92.0 [3.62]	52.0 [2.05]	33.5 [1.32]	M5 x 0.8
<u>KA32MSA-M</u>	96.5 [3.80]	60.0 [2.36]	40.0 [1.57]	M5 x 0.8

See our website www.AutomationDirect.com for complete Engineering drawings.