



# G-Series ISO 15552 Pneumatic Cylinders – 100mm Bore

## 100mm Bore, Double-acting, Magnetic Piston, Cushions



NITRA pneumatic ISO 15552 interchangeable cylinder, 100mm bore, 25mm diameter piston rod, G1/2 (BSPP) female ports, double acting; flange, pivot and clevis mount options available. Adjustable cushions on both ends. See the end of the section for accessory details.

### Features

- Adjustable cushions
- Internal magnet for sensor switching
- Three sides with longitudinal slots for inserting securing retractable sensors such as type CPS9F and CPS9Q (see position switches at the end of the cylinder section for further details)
- G (BSPP) threaded ports



### 100mm bore, double acting, tapped end caps

Part Number	Price	Stroke Length (mm)	"A" (mm [inch])	Weight (lb)
<a href="#">G100M025MD-MC</a>	\$181.00	25	163 [6.42]	9.3
<a href="#">G100M050MD-MC</a>	\$185.00	50	188 [7.40]	9.8
<a href="#">G100M075MD-MC</a>	\$189.00	75	213 [8.39]	10.3
<a href="#">G100M100MD-MC</a>	\$193.00	100	238 [9.37]	10.8
<a href="#">G100M125MD-MC</a>	\$198.00	125	263 [10.35]	11.4
<a href="#">G100M150MD-MC</a>	\$201.00	150	288 [11.34]	11.9
<a href="#">G100M200MD-MC</a>	\$212.00	200	338 [13.31]	13.0
<a href="#">G100M250MD-MC</a>	\$224.00	250	388 [15.28]	14.0
<a href="#">G100M300MD-MC</a>	\$232.00	300	438 [17.24]	15.0
<a href="#">G100M400MD-MC</a>	\$250.00	400	538 [21.18]	17.1
<a href="#">G100M500MD-MC</a>	\$270.00	500	638 [25.12]	19.2
<a href="#">G100M600MD-MC</a>	\$288.00	600	738 [29.10]	21.3

Specifications	
Aluminum body and end caps	Plastoferrite magnet
C45 chromed piston rod	NBR (Nitrile Butadiene Rubber) buffer + static o-rings
Die cast aluminum head	NBR (Nitrile Butadiene Rubber) cushioning gasket
NBR (Nitrile Butadiene Rubber) piston and piston rod gasket	Brass cushioning needle with needle out movement safety system
Steel guide bushing with bronze and PTFE (Teflon) insert	Pressure rating 145 psi [10 bar], AIR ONLY
Drawn anodized aluminum body	Temperature rating 14°F to 176°F [-10°C to 80°C]
Aluminum piston with PTFE (Teflon) pad	
Extend force at 100 psi = 1217.4 lb.	Retract force at 100 psi = 1141.3 lb.

BSPP = British Standard Pipe Parallel

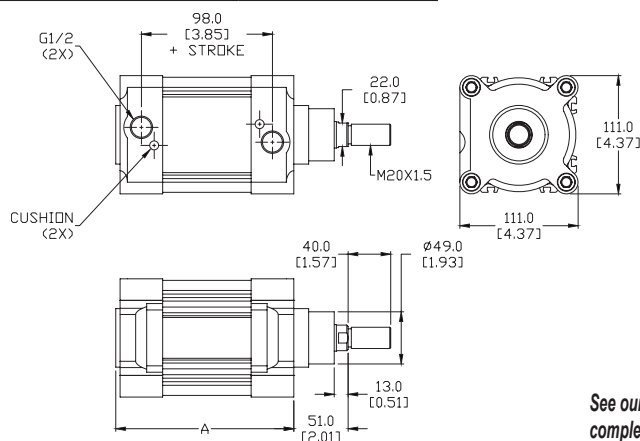
\* The cushions decelerate the piston rod over the last mm (approx.) of stroke and are adjustable. Cushioned cylinders have an adjustable orifice and pre-lubricated nitrile cushion seal.

Mounting Accessories	
Style	Part No.
Foot Mount	<a href="#">GMB-100MM</a>
Front or Rear Flange	<a href="#">GFL-100MM</a>
Male Rear Clevis	<a href="#">GMC-100MM</a>
Spherical Male Clevis	<a href="#">GSMC-100MM</a>

Rod Accessories	
Style	Part No.
Rod Clevis	<a href="#">GRC-M20-15</a>
Rod Eye	<a href="#">GRE-M20-15</a>
Self Aligning Rod Coupler	<a href="#">GRCP-M20-15</a>
Rod Nut	<a href="#">GN-M20-15</a>

### Dimensions

mm [inches]



See our website [www.AutomationDirect.com](http://www.AutomationDirect.com) for complete Engineering drawings.



# G-Series ISO 15552 Pneumatic Cylinders – Accessories

D-Series Heavy Duty Pneumatic Cylinder Accessories					
Part Number	Description	Pcs/Pkg	Wt (lb)	Drawing Link	Price
<a href="#"><u>GRC-M10-125</u></a>	Rod clevis, M10 X 1.25 thread, zinc plated steel. For use with NITRA G-series cylinders.	1	0.2	<a href="#"><u>PDF</u></a>	\$4.50
<a href="#"><u>GRC-M12-125</u></a>	Rod clevis, M12 X 1.25 thread, zinc plated steel. For use with NITRA G-series cylinders.	1	0.3	<a href="#"><u>PDF</u></a>	\$7.50
<a href="#"><u>GRC-M16-15</u></a>	Rod clevis, M16 X 1.5 thread, zinc plated steel. For use with NITRA G-series cylinders.	1	0.8	<a href="#"><u>PDF</u></a>	\$16.00
<a href="#"><u>GRC-M20-15</u></a>	Rod clevis, M20 X 1.5 thread, zinc plated steel. For use with NITRA G-series cylinders.	1	1.5	<a href="#"><u>PDF</u></a>	\$26.00
<a href="#"><u>GRE-M10-125</u></a>	Rod eye, M10 X 1.25 thread, spherical bearing, zinc plated steel. For use with NITRA G-series cylinders.	1	0.2	<a href="#"><u>PDF</u></a>	\$25.00
<a href="#"><u>GRE-M12-125</u></a>	Rod eye, M12 X 1.25 thread, spherical bearing, zinc plated steel. For use with NITRA G-series cylinders.	1	0.3	<a href="#"><u>PDF</u></a>	\$28.50
<a href="#"><u>GRE-M16-15</u></a>	Rod eye, M16 X 1.5 thread, spherical bearing, zinc plated steel. For use with NITRA G-series cylinders.	1	0.5	<a href="#"><u>PDF</u></a>	\$53.00
<a href="#"><u>GRE-M20-15</u></a>	Rod eye, M20 X 1.5 thread, spherical bearing, zinc plated steel. For use with NITRA G-series cylinders.	1	0.9	<a href="#"><u>PDF</u></a>	\$71.00
<a href="#"><u>GRCP-M10-125</u></a>	Self-aligning rod coupler, M10 X 1.25 thread, zinc plated steel. For use with NITRA G-series cylinders.	1	0.5	<a href="#"><u>PDF</u></a>	\$57.00
<a href="#"><u>GRCP-M12-125</u></a>	Self-aligning rod coupler, M12 X 1.25 thread, zinc plated steel. For use with NITRA G-series cylinders.	1	0.7	<a href="#"><u>PDF</u></a>	\$60.00
<a href="#"><u>GRCP-M16-15</u></a>	Self-aligning rod coupler, M16 X 1.5 thread, zinc plated steel. For use with NITRA G-series cylinders.	1	1.4	<a href="#"><u>PDF</u></a>	\$78.00
<a href="#"><u>GRCP-M20-15</u></a>	Self-aligning rod coupler, M20 X 1.5 thread, zinc plated steel. For use with NITRA G-series cylinders.	1	1.5	<a href="#"><u>PDF</u></a>	\$96.00
<a href="#"><u>GMB-32MM</u></a>	Foot mount bracket, zinc plated steel. For use with 32mm bore NITRA G-series cylinders.	1	0.2	<a href="#"><u>PDF</u></a>	\$7.00
<a href="#"><u>GMB-40MM</u></a>	Foot mount bracket, zinc plated steel. For use with 40mm bore NITRA G-series cylinders.	1	0.3	<a href="#"><u>PDF</u></a>	\$8.25
<a href="#"><u>GMB-50MM</u></a>	Foot mount bracket, zinc plated steel. For use with 50mm bore NITRA G-series cylinders.	1	0.4	<a href="#"><u>PDF</u></a>	\$9.50
<a href="#"><u>GMB-63MM</u></a>	Foot mount bracket, zinc plated steel. For use with 63mm bore NITRA G-series cylinders.	1	0.6	<a href="#"><u>PDF</u></a>	\$10.50
<a href="#"><u>GMB-80MM</u></a>	Foot mount bracket, zinc plated steel. For use with 80mm bore NITRA G-series cylinders.	1	1.0	<a href="#"><u>PDF</u></a>	\$15.00
<a href="#"><u>GMB-100MM</u></a>	Foot mount bracket, zinc plated steel. For use with 100mm bore NITRA G-series cylinders.	1	1.3	<a href="#"><u>PDF</u></a>	\$24.00
<a href="#"><u>GMC-32MM</u></a>	Rear pivot eye, zinc plated steel. For use with 32mm bore NITRA G-series cylinders.	1	0.2	<a href="#"><u>PDF</u></a>	\$18.00
<a href="#"><u>GMC-40MM</u></a>	Rear pivot eye, zinc plated steel. For use with 40mm bore NITRA G-series cylinders.	1	0.3	<a href="#"><u>PDF</u></a>	\$19.00
<a href="#"><u>GMC-50MM</u></a>	Rear pivot eye, zinc plated steel. For use with 50mm bore NITRA G-series cylinders.	1	0.6	<a href="#"><u>PDF</u></a>	\$22.00
<a href="#"><u>GMC-63MM</u></a>	Rear pivot eye, zinc plated steel. For use with 63mm bore NITRA G-series cylinders.	1	0.9	<a href="#"><u>PDF</u></a>	\$26.00
<a href="#"><u>GMC-80MM</u></a>	Rear pivot eye, zinc plated steel. For use with 80mm bore NITRA G-series cylinders.	1	1.5	<a href="#"><u>PDF</u></a>	\$32.00
<a href="#"><u>GMC-100MM</u></a>	Rear pivot eye, zinc plated steel. For use with 100mm bore NITRA G-series cylinders.	1	2.4	<a href="#"><u>PDF</u></a>	\$44.50
<a href="#"><u>GSMC-32MM</u></a>	Rear spherical pivot, spherical bearing, zinc plated steel. For use with 32mm bore NITRA G-series cylinders.	1	0.3	<a href="#"><u>PDF</u></a>	\$25.00
<a href="#"><u>GSMC-40MM</u></a>	Rear spherical pivot, spherical bearing, zinc plated steel. For use with 40mm bore NITRA G-series cylinders.	1	0.4	<a href="#"><u>PDF</u></a>	\$27.00
<a href="#"><u>GSMC-50MM</u></a>	Rear spherical pivot, spherical bearing, zinc plated steel. For use with 50mm bore NITRA G-series cylinders.	1	0.5	<a href="#"><u>PDF</u></a>	\$39.00
<a href="#"><u>GSMC-63MM</u></a>	Rear spherical pivot, spherical bearing, zinc plated steel. For use with 63mm bore NITRA G-series cylinders.	1	0.7	<a href="#"><u>PDF</u></a>	\$50.00
<a href="#"><u>GSMC-80MM</u></a>	Rear spherical pivot, spherical bearing, zinc plated steel. For use with 80mm bore NITRA G-series cylinders.	1	1.3	<a href="#"><u>PDF</u></a>	\$62.00
<a href="#"><u>GSMC-100MM</u></a>	Rear spherical pivot, spherical bearing, zinc plated steel. For use with 100mm bore NITRA G-series cylinders.	1	1.9	<a href="#"><u>PDF</u></a>	\$84.00
<a href="#"><u>GFL-32MM</u></a>	Flange mount plate, zinc plated steel. For use with 32mm bore NITRA G-series cylinders.	1	0.5	<a href="#"><u>PDF</u></a>	\$12.00
<a href="#"><u>GFL-40MM</u></a>	Flange mount plate, zinc plated steel. For use with 40mm bore NITRA G-series cylinders.	1	0.6	<a href="#"><u>PDF</u></a>	\$13.00
<a href="#"><u>GFL-50MM</u></a>	Flange mount plate, zinc plated steel. For use with 50mm bore NITRA G-series cylinders.	1	1.2	<a href="#"><u>PDF</u></a>	\$16.00
<a href="#"><u>GFL-63MM</u></a>	Flange mount plate, zinc plated steel. For use with 63mm bore NITRA G-series cylinders.	1	1.5	<a href="#"><u>PDF</u></a>	\$23.00
<a href="#"><u>GFL-80MM</u></a>	Flange mount plate, zinc plated steel. For use with 80mm bore NITRA G-series cylinders.	1	3.1	<a href="#"><u>PDF</u></a>	\$26.00
<a href="#"><u>GFL-100MM</u></a>	Flange mount plate, zinc plated steel. For use with 100mm bore NITRA G-series cylinders.	1	4.5	<a href="#"><u>PDF</u></a>	\$31.00
<a href="#"><u>GN-M10-125</u></a>	Rod nut, M10 X 1.25 thread, zinc plated steel. For use with NITRA G-series cylinders.	1	0.2	<a href="#"><u>PDF</u></a>	\$1.50
<a href="#"><u>GN-M12-125</u></a>	Rod nut, M12 X 1.25 thread, zinc plated steel. For use with NITRA G-series cylinders.	1	0.2	<a href="#"><u>PDF</u></a>	\$1.75
<a href="#"><u>GN-M16-15</u></a>	Rod nut, M16 X 1.5 thread, zinc plated steel. For use with NITRA G-series cylinders.	1	0.2	<a href="#"><u>PDF</u></a>	\$2.00
<a href="#"><u>GN-M20-15</u></a>	Rod nut, M20 X 1.5 thread, zinc plated steel. For use with NITRA G-series cylinders.	1	0.2	<a href="#"><u>PDF</u></a>	\$2.25



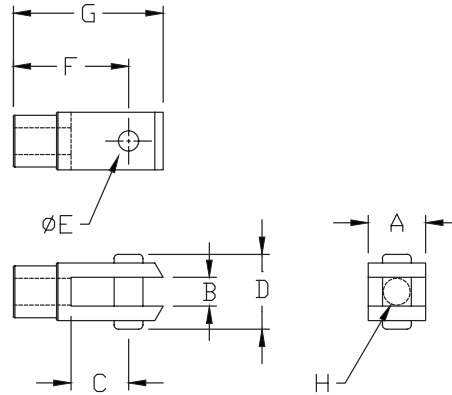
# G-Series ISO Pneumatic Cylinders – Accessories

## Rod Clevis



Part no. [GRC-M10-125](#)

### Dimensions mm [inches]



Note: Comes with Pivot Pin installed.

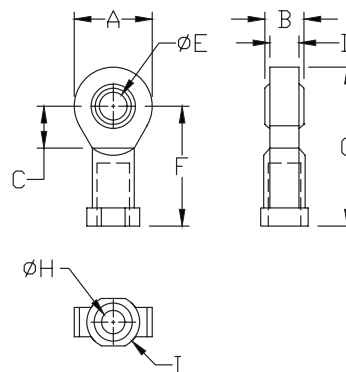
Rod Clevis Dimension Table								
Part #	A	B	C	D	E	F	G	H
<a href="#">GRC-M10-125</a>	20.00 [0.78]	10.00 [0.39]	10.00 [0.39]	26.00 [1.02]	10.00 [0.39]	40.00 [1.57]	52.00 [2.04]	M10x1.25
<a href="#">GRC-M12-125</a>	24.00 [0.94]	12.00 [0.47]	24.00 [0.94]	32.00 [1.25]	12.00 [0.47]	48.00 [1.88]	62.00 [2.44]	M12x1.25
<a href="#">GRC-M16-15</a>	32.00 [1.25]	16.00 [0.62]	32.00 [1.25]	40.00 [1.57]	16.00 [0.62]	64.00 [2.51]	83.00 [3.26]	M16x1.5
<a href="#">GRC-M20-15</a>	40.00 [1.57]	20.00 [0.78]	40.00 [1.57]	48.00 [1.88]	20.00 [0.78]	80.00 [3.14]	105.00 [4.13]	M20x1.5

## Rod Eye



Part no. [GRE-M10-125](#)

### Dimensions mm [inches]



Rod Eye Dimension Table									
Part #	A	B	C	D	E	F	G	H	I
<a href="#">GRE-M10-125</a>	28.00 [1.10]	14.00 [0.55]	15.00 [0.59]	10.50 [0.41]	10.00 [0.39]	43.00 [1.69]	57.00 [2.24]	M10x1.25	19 [0.74]
<a href="#">GRE-M12-125</a>	32.00 [1.25]	16.00 [0.62]	17.00 [0.66]	12.00 [0.47]	12.00 [0.47]	50.00 [1.96]	66.00 [2.59]	M12x1.25	19 [0.74]
<a href="#">GRE-M16-15</a>	42.00 [1.65]	21.00 [0.82]	22.00 [0.86]	15.00 [0.59]	16.00 [0.62]	64.00 [2.51]	85.00 [3.34]	M16x1.5	22 [0.86]
<a href="#">GRE-M20-15</a>	50.00 [1.96]	25.00 [0.98]	26.00 [1.02]	18.00 [0.70]	20.00 [0.78]	77.00 [3.03]	102.00 [4.01]	M20x1.5	27 [1.06]

See our website [www.AutomationDirect.com](http://www.AutomationDirect.com) for complete Engineering drawings.



# G-Series ISO Pneumatic Cylinders – Accessories

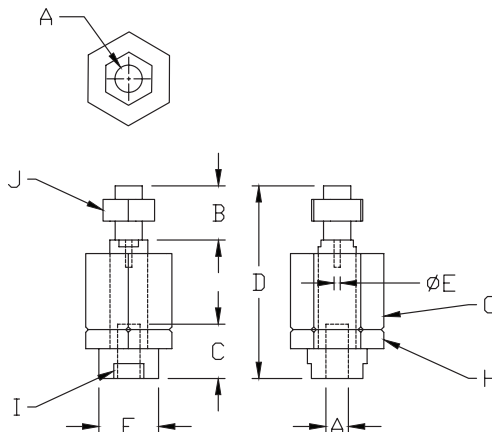
## Self Aligning Rod Coupler



Part no. [GRCP-M10-125](#)

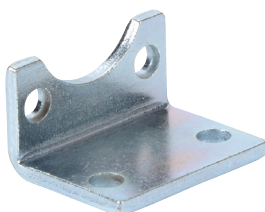
### Dimensions

mm [inches]



Self Aligning Rod Coupler Dimension Table										
Part #	A	B	C	D	E	F	G	H	I	J
<a href="#">GRCP-M10-125</a>	M10x1.25	20.00 [0.78]	20.00 [0.78]	71.00 [2.79]	4.00 [0.15]	22.00 [0.86]	30.00 [1.18]	30.00 [1.18]	19.00 [0.74]	17.00 [0.66]
<a href="#">GRCP-M12-125</a>	M12x1.25	24.00 [0.94]	20.00 [0.78]	75.00 [2.95]	4.00 [0.15]	22.00 [0.86]	30.00 [1.18]	30.00 [1.18]	19.00 [0.74]	19.00 [0.74]
<a href="#">GRCP-M16-15</a>	M16x1.5	32.00 [1.25]	32.00 [1.25]	103.00 [4.05]	4.00 [0.15]	32.00 [1.25]	41.00 [1.61]	41.00 [1.61]	30.00 [1.18]	24.00 [0.94]
<a href="#">GRCP-M20-15</a>	M20x1.5	40.00 [1.57]	40.00 [1.57]	119.00 [4.68]	4.00 [0.15]	32.00 [1.25]	41.00 [1.61]	41.00 [1.61]	30.00 [1.18]	30.00 [1.18]

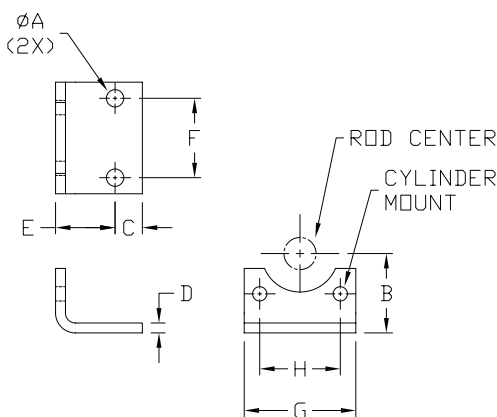
## Foot Mount Bracket



Part no. [GMB-32MM](#)

### Dimensions

mm [inches]



Note: Individually packed with 2 screws

Foot Mount Dimension Table								
Part #	A	B	C	D	E	F	G	H
<a href="#">GMB-32MM</a>	7.00 [0.27]	32.00 [1.25]	11.00 [0.43]	4.00 [0.15]	24.00 [0.94]	32.00 [1.25]	45.00 [1.77]	32.5 [1.28]
<a href="#">GMB-40MM</a>	9.00 [0.35]	36.00 [1.41]	15.00 [0.59]	4.00 [0.15]	28.00 [1.10]	36.00 [1.41]	52.00 [2.04]	38.0 [1.50]
<a href="#">GMB-50MM</a>	9.00 [0.35]	45.00 [1.77]	15.00 [0.59]	4.00 [0.15]	32.00 [1.25]	45.00 [1.77]	52.00 [2.04]	46.5 [1.83]
<a href="#">GMB-63MM</a>	9.00 [0.35]	50.00 [1.96]	15.00 [0.59]	6.00 [0.23]	32.00 [1.25]	50.00 [1.96]	75.00 [2.95]	56.5 [2.22]
<a href="#">GMB-80MM</a>	12.00 [0.47]	63.00 [2.48]	20.00 [0.78]	6.00 [0.23]	41.00 [1.61]	63.00 [2.48]	95.00 [3.74]	63.0 [2.48]
<a href="#">GMB-100MM</a>	14.00 [0.55]	71.00 [2.79]	25.00 [0.98]	6.00 [0.23]	41.00 [1.61]	75.00 [2.95]	115.00 [4.52]	89.0 [3.50]

See our website [www.AutomationDirect.com](http://www.AutomationDirect.com) for complete Engineering drawings.



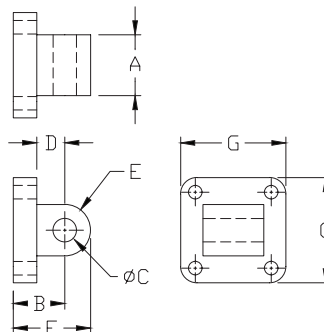
# G-Series ISO Pneumatic Cylinders – Accessories

## Rear Pivot Eye



Part no. [GMC-32MM](#)

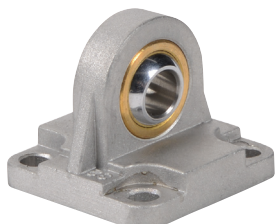
### Dimensions mm [inches]



Note: Supplied with 4 screws, 4 washers

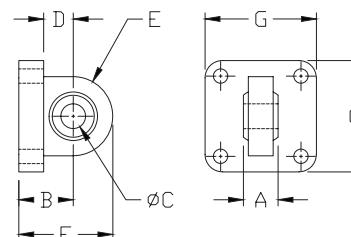
Male Rear Clevis Dimension Table							
Part #	A	B	C	D	E	F	G
<a href="#">GMC-32MM</a>	26.00 [1.02]	22.00 [0.86]	10.00 [0.39]	12.00 [0.47]	11.00 [0.43]	33.00 [1.29]	45.00 [1.77]
<a href="#">GMC-40MM</a>	28.00 [1.10]	25.00 [0.98]	12.00 [0.47]	15.00 [0.59]	13.00 [0.51]	38.00 [1.49]	52.00 [2.04]
<a href="#">GMC-50MM</a>	32.00 [1.25]	27.00 [1.06]	12.00 [0.47]	15.00 [0.59]	13.00 [0.51]	40.00 [1.57]	65.00 [2.55]
<a href="#">GMC-63MM</a>	40.00 [1.57]	32.00 [1.25]	16.00 [0.62]	20.00 [0.78]	17.00 [0.66]	49.00 [1.92]	75.00 [2.95]
<a href="#">GMC-80MM</a>	50.00 [1.96]	36.00 [1.41]	16.00 [0.62]	20.00 [0.78]	17.00 [0.66]	53.00 [2.08]	95.00 [3.74]
<a href="#">GMC-100MM</a>	60.00 [2.36]	41.00 [1.61]	20.00 [0.78]	25.00 [0.98]	21.00 [0.82]	62.00 [2.44]	115.00 [4.52]

## Spherical Rear Pivot



Part no. [GSMC-32MM](#)

### Dimensions mm [inches]



Note: Supplied with 4 screws, 4 washers

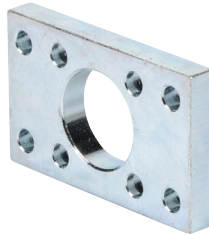
Spherical Male Clevis Dimension Table							
Part #	A	B	C	D	E	F	G
<a href="#">GSMC-32MM</a>	14.00 [0.55]	22.00 [0.86]	10.00 [0.39]	12.00 [0.47]	16.00 [0.62]	38.00 [1.49]	45.00 [1.77]
<a href="#">GSMC-40MM</a>	16.00 [0.62]	25.00 [0.98]	12.00 [0.47]	15.00 [0.59]	19.00 [0.74]	44.00 [1.73]	52.00 [2.04]
<a href="#">GSMC-50MM</a>	16.00 [0.62]	27.00 [1.06]	12.00 [0.47]	15.00 [0.59]	19.00 [0.74]	46.00 [1.81]	65.00 [2.55]
<a href="#">GSMC-63MM</a>	21.00 [0.82]	32.00 [1.25]	16.00 [0.62]	20.00 [0.78]	24.00 [0.94]	56.00 [2.20]	75.00 [2.95]
<a href="#">GSMC-80MM</a>	21.00 [0.82]	36.00 [1.41]	16.00 [0.62]	20.00 [0.78]	24.00 [0.94]	60.00 [2.36]	95.00 [3.74]
<a href="#">GSMC-100MM</a>	25.00 [0.98]	41.00 [1.61]	20.00 [0.78]	25.00 [0.98]	30.00 [1.18]	71.00 [2.79]	115.00 [4.52]

See our website [www.AutomationDirect.com](http://www.AutomationDirect.com) for complete Engineering drawings.



# G-Series ISO Pneumatic Cylinders – Accessories

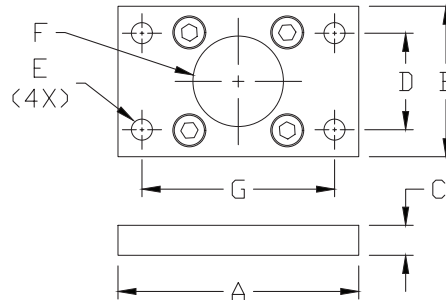
## Front or Rear Flange



Part no. [GFL-32MM](#)

### Dimensions

mm [inches]



Note: Supplied with 4 screws

Front or Rear Flange Dimension Table							
Part #	A	B	C	D	E	F	G
<a href="#">GFL-32MM</a>	80.00 [3.14]	50.00 [1.96]	10.00 [0.39]	32.00 [1.25]	7.00 [1.25]	32.00 [1.25]	64.00 [2.52]
<a href="#">GFL-40MM</a>	90.00 [3.54]	55.00 [2.16]	10.00 [0.39]	36.00 [1.41]	9.00 [0.35]	40.00 [1.57]	72.00 [2.83]
<a href="#">GFL-50MM</a>	110.00 [4.33]	65.00 [2.55]	12.00 [0.47]	45.00 [1.77]	9.00 [0.35]	50.00 [1.96]	90.00 [3.54]
<a href="#">GFL-63MM</a>	120.00 [4.72]	75.00 [2.95]	12.00 [0.47]	50.00 [1.96]	9.00 [0.35]	63.00 [2.48]	100.00 [3.93]
<a href="#">GFL-80MM</a>	153.00 [6.02]	95.00 [3.74]	16.00 [0.62]	63.00 [2.48]	12.00 [0.47]	80.00 [3.14]	126.00 [4.96]
<a href="#">GFL-100MM</a>	178.00 [7.00]	115.00 [4.52]	16.00 [0.62]	75.00 [2.95]	14.00 [0.55]	100.00 [3.93]	150.00 [5.90]

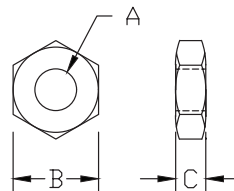
## Rod Nut



Part no. [GN-M20-15](#)

### Dimensions

mm [inches]



Rod Nut Dimension Table			
Part #	A	B	C
<a href="#">GN-M10-125</a>	M10x1.25	17.00 [0.66]	6.00 [0.23]
<a href="#">GN-M12-125</a>	M12x1.25	19.00 [0.74]	7.00 [0.27]
<a href="#">GN-M16-15</a>	M16x1.5	24.00 [0.94]	8.00 [0.31]
<a href="#">GN-M20-15</a>	M20x1.5	30.00 [1.18]	9.00 [0.35]

See our website [www.AutomationDirect.com](http://www.AutomationDirect.com) for complete Engineering drawings.



# CPS Series Cylinder Position Switches

Position Switch Cross Reference Chart			
NITRA Switch Type	Cylinder Brand (may fit some of these cylinders)	Photo Example	Groove Illustration
CPS CPSF	NITRA A-Series NITRA D-Series NITRA F-Series		
CPS9C	DE-STA-CO Robohand SMC Compact Air Bimba Fabco		
CPS9D	NITRA L-Series Fabco Numatics Rotomation		
CPS9E	NITRA L-Series Fabco Numatics Rotomation		
CPS9F	NITRA G-Series Fabco Festo Numatics Rotomation		
CPS9H	NITRA E-Series NITRA H-Series		
CPS9M	Norgren		
CPS9Q	NITRA L-Series NITRA G-Series Parker Fabco Festo Numatics Rotomation		