



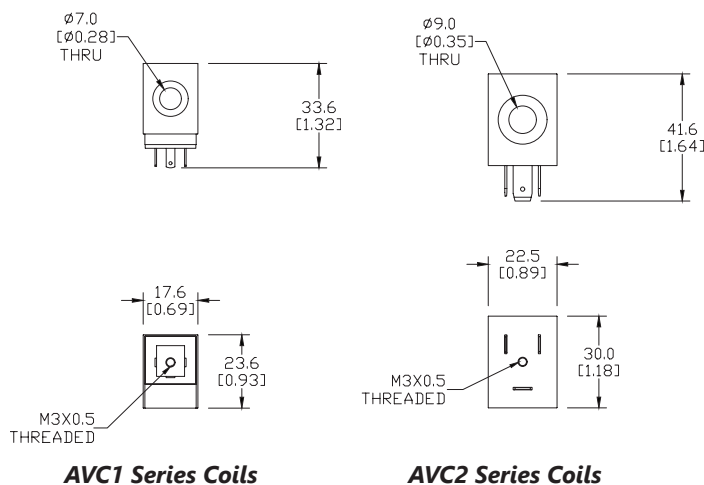
# Pneumatic A-Series Direction Control Solenoid Valves - Accessories

**AVC1-12D****AVC2-12D****AVP-31BKT****AVP-31KIT**

Pneumatic A-Series Directional Control Solenoid Valve Series Accessories			
Part No.	Price	Description	Weight (lb)
<a href="#"><u>AVC1-12D</u></a>	\$12.50	NITRA solenoid coil, 12VDC, 2.5 W. For use with AVS-31 and AVS-51 series valves.	0.1
<a href="#"><u>AVC1-24D</u></a>	\$12.50	NITRA solenoid coil, 24VDC, 2.5 W. For use with AVS-31 and AVS-51 series valves.	0.1
<a href="#"><u>AVC1-24A</u></a>	\$12.50	NITRA solenoid coil, 24VAC, 4.0 VA. For use with AVS-31 and AVS-51 series valves.	0.1
<a href="#"><u>AVC1-120A</u></a>	\$12.50	NITRA solenoid coil, 120VAC, 3.5 VA. For use with AVS-31 and AVS-51 series valves.	0.1
<a href="#"><u>AVC2-12D</u></a>	\$13.00	NITRA solenoid coil, 12 VDC, 3.0W. For use with AVP-31, AVS-32, AVS-33, AVS-52, AVS-53, AVS-54 series valves and ASD series soft starters.	0.2
<a href="#"><u>AVC2-24D</u></a>	\$13.00	NITRA solenoid coil, 24 VDC, 3.0W. For use with AVP-31, AVS-32, AVS-33, AVS-52, AVS-53, AVS-54 series valves and ASD series soft starters.	0.2
<a href="#"><u>AVC2-24A</u></a>	\$12.50	NITRA solenoid coil, 24 VAC, 5.0VA. For use with AVP-31, AVS-32, AVS-33, AVS-52, AVS-53, AVS-54 series valves and ASD series soft starters.	0.2
<a href="#"><u>AVC2-120A</u></a>	\$12.50	NITRA solenoid coil, 120 VAC, 4.5VA. For use with AVP-31, AVS-32, AVS-33, AVS-52, AVS-53, AVS-54 series valves and ASD series soft starters.	0.2
<a href="#"><u>AVP-31BKT</u></a>	\$2.00	NITRA individual mounting bracket, plated steel. For use with AVP-31 directional control valves.	0.1
<a href="#"><u>AVP-31KIT</u></a>	\$3.50	NITRA stacking screws, for use with AVP-31 directional control valves. One kit is required for each additional AVP-31 valve added to the stack.	0.1

## Dimensions

mm [inches]

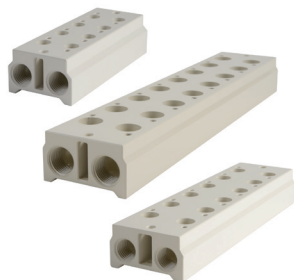


See our website [www.AutomationDirect.com](http://www.AutomationDirect.com) for complete Engineering drawings.

**AVP-31BKT**



# Pneumatic Directional Control Solenoid Valve Manifolds and Accessories



**AM-3 Series Manifolds**



**AM-31BP**

Pneumatic Directional Control Solenoid Valve Series Accessories			
Part No.	Price	Description	Weight (lb)
<a href="#"><u>AM-312</u></a>	\$25.50	NITRA pneumatic valve manifold, aluminum, 2 stations, (2) 1/4in FNPT inlet port(s), (2) 1/4in FNPT exhaust port(s). For use with AVS-31 series.	0.2
<a href="#"><u>AM-314</u></a>	\$37.00	NITRA pneumatic valve manifold, aluminum, 4 stations, (2) 1/4in FNPT inlet port(s), (2) 1/4in FNPT exhaust port(s). For use with AVS-31 series.	0.3
<a href="#"><u>AM-316</u></a>	\$44.50	NITRA pneumatic valve manifold, aluminum, 6 stations, (2) 1/4in FNPT inlet port(s), (2) 1/4in FNPT exhaust port(s). For use with AVS-31 series.	0.4
<a href="#"><u>AM-318</u></a>	\$59.00	NITRA pneumatic valve manifold, aluminum, 8 stations, (2) 1/4in FNPT inlet port(s), (2) 1/4in FNPT exhaust port(s). For use with AVS-31 series.	0.5
<a href="#"><u>AM-31BP</u></a>	\$5.25	NITRA blanking plate, plated steel. For use with AM-31 series manifolds.	0.1
<a href="#"><u>AM-322</u></a>	\$24.00	NITRA pneumatic valve manifold, aluminum, 2 stations, (2) 1/4in FNPT inlet port(s), (2) 1/4in FNPT exhaust port(s). For use with AVS-32 series.	0.2
<a href="#"><u>AM-324</u></a>	\$41.50	NITRA pneumatic valve manifold, aluminum, 4 stations, (2) 1/4in FNPT inlet port(s), (2) 1/4in FNPT exhaust port(s). For use with AVS-32 series.	0.4
<a href="#"><u>AM-326</u></a>	\$60.00	NITRA pneumatic valve manifold, aluminum, 6 stations, (2) 1/4in FNPT inlet port(s), (2) 1/4in FNPT exhaust port(s). For use with AVS-32 series.	0.5
<a href="#"><u>AM-328</u></a>	\$77.00	NITRA pneumatic valve manifold, aluminum, 8 stations, (2) 1/4in FNPT inlet port(s), (2) 1/4in FNPT exhaust port(s). For use with AVS-32 series.	0.7
<a href="#"><u>AM-32BP</u></a>	\$5.25	NITRA blanking plate, plated steel. For use with AM-32 series manifolds.	0.1
<a href="#"><u>AM-332</u></a>	\$26.50	NITRA pneumatic valve manifold, aluminum, 2 stations, (2) 3/8in FNPT inlet port(s), (2) 3/8in FNPT exhaust port(s). For use with AVS-33 series.	0.4
<a href="#"><u>AM-334</u></a>	\$48.00	NITRA pneumatic valve manifold, aluminum, 4 stations, (2) 3/8in FNPT inlet port(s), (2) 3/8in FNPT exhaust port(s). For use with AVS-33 series.	0.6
<a href="#"><u>AM-336</u></a>	\$85.00	NITRA pneumatic valve manifold, aluminum, 6 stations, (2) 3/8in FNPT inlet port(s), (2) 3/8in FNPT exhaust port(s). For use with AVS-33 series.	0.9
<a href="#"><u>AM-338</u></a>	\$90.00	NITRA pneumatic valve manifold, aluminum, 8 stations, (2) 3/8in FNPT inlet port(s), (2) 3/8in FNPT exhaust port(s). For use with AVS-33 series.	1.1
<a href="#"><u>AM-33BP</u></a>	\$5.75	NITRA blanking plate, plated steel. For use with AM-33 series manifolds.	0.1
<a href="#"><u>AM-512</u></a>	\$13.00	NITRA pneumatic valve manifold, aluminum, 2 stations, (2) 1/4in FNPT inlet port(s), (4) 1/4in FNPT exhaust port(s). For use with AVS-51 series.	0.4
<a href="#"><u>AM-514</u></a>	\$23.50	NITRA pneumatic valve manifold, aluminum, 4 stations, (2) 1/4in FNPT inlet port(s), (4) 1/4in FNPT exhaust port(s). For use with AVS-51 series.	0.6
<a href="#"><u>AM-516</u></a>	\$33.50	NITRA pneumatic valve manifold, aluminum, 6 stations, (2) 1/4in FNPT inlet port(s), (4) 1/4in FNPT exhaust port(s). For use with AVS-51 series.	0.8
<a href="#"><u>AM-518</u></a>	\$46.50	NITRA pneumatic valve manifold, aluminum, 8 stations, (2) 1/4in FNPT inlet port(s), (4) 1/4in FNPT exhaust port(s). For use with AVS-51 series.	1.1
<a href="#"><u>AM-51BP</u></a>	\$6.50	NITRA blanking plate, plated steel. For use with AM-51 series manifolds.	0.1
<a href="#"><u>AM-522</u></a>	\$17.50	NITRA pneumatic valve manifold, aluminum, 2 stations, (2) 1/4in FNPT inlet port(s), (4) 1/4in FNPT exhaust port(s). For use with AVS-52 series.	0.5
<a href="#"><u>AM-524</u></a>	\$34.00	NITRA pneumatic valve manifold, aluminum, 4 stations, (2) 1/4in FNPT inlet port(s), (4) 1/4in FNPT exhaust port(s). For use with AVS-52 series.	0.9
<a href="#"><u>AM-526</u></a>	\$48.50	NITRA pneumatic valve manifold, aluminum, 6 stations, (2) 1/4in FNPT inlet port(s), (4) 1/4in FNPT exhaust port(s). For use with AVS-52 series.	1.2
<a href="#"><u>AM-528</u></a>	\$66.00	NITRA pneumatic valve manifold, aluminum, 8 stations, (2) 1/4in FNPT inlet port(s), (4) 1/4in FNPT exhaust port(s). For use with AVS-52 series.	1.5
<a href="#"><u>AM-52BP</u></a>	\$7.00	NITRA blanking plate, plated steel. For use with AM-52 series manifolds.	0.1



# Pneumatic Directional Control Solenoid Valve Manifolds and Accessories



**AM-5 Series Manifolds**



**AM-31GS**

Pneumatic Directional Control Solenoid Valve Series Accessories Continued			
Part No.	Price	Description	Weight (lb)
<a href="#"><u>AM-532</u></a>	\$23.00	NITRA pneumatic valve manifold, aluminum, 2 stations, (2) 3/8in FNPT inlet port(s), (4) 3/8in FNPT exhaust port(s). For use with AVS-53 series.	0.8
<a href="#"><u>AM-534</u></a>	\$46.00	NITRA pneumatic valve manifold, aluminum, 4 stations, (2) 3/8in FNPT inlet port(s), (4) 3/8in FNPT exhaust port(s). For use with AVS-53 series.	1.4
<a href="#"><u>AM-536</u></a>	\$69.00	NITRA pneumatic valve manifold, aluminum, 6 stations, (2) 3/8in FNPT inlet port(s), (4) 3/8in FNPT exhaust port(s). For use with AVS-53 series.	1.9
<a href="#"><u>AM-538</u></a>	\$92.00	NITRA pneumatic valve manifold, aluminum, 8 stations, (2) 3/8in FNPT inlet port(s), (4) 3/8in FNPT exhaust port(s). For use with AVS-53 series.	2.5
<a href="#"><u>AM-53BP</u></a>	\$7.00	NITRA blanking plate, plated steel. For use with AM-53 series manifolds.	0.1
<a href="#"><u>AM-542</u></a>	\$30.50	NITRA pneumatic valve manifold, aluminum, 2 stations, (2) 1/2in FNPT inlet port(s), (4) 1/2in FNPT exhaust port(s). For use with AVS-54 series.	1.7
<a href="#"><u>AM-544</u></a>	\$62.00	NITRA pneumatic valve manifold, aluminum, 4 stations, (2) 1/2in FNPT inlet port(s), (4) 1/2in FNPT exhaust port(s). For use with AVS-54 series.	2.8
<a href="#"><u>AM-546</u></a>	\$95.00	NITRA pneumatic valve manifold, aluminum, 6 stations, (2) 1/2in FNPT inlet port(s), (4) 1/2in FNPT exhaust port(s). For use with AVS-54 series.	4.0
<a href="#"><u>AM-548</u></a>	\$114.00	NITRA pneumatic valve manifold, aluminum, 8 stations, (2) 1/2in FNPT inlet port(s), (4) 1/2in FNPT exhaust port(s). For use with AVS-54 series.	5.2
<a href="#"><u>AM-54BP</u></a>	\$7.00	NITRA blanking plate, plated steel. For use with AM-54 series manifolds.	0.1
<a href="#"><u>AM-31GS</u></a>	\$5.50	NITRA manifold mounting set, for use with AM-31 series manifolds.	0.1
<a href="#"><u>AM-32GS</u></a>	\$6.25	NITRA manifold mounting set, for use with AM-32 series manifolds.	0.1
<a href="#"><u>AM-33GS</u></a>	\$6.25	NITRA manifold mounting set, for use with AM-33 series manifolds.	0.1
<a href="#"><u>AM-51GS</u></a>	\$5.50	NITRA manifold mounting set, for use with AM-51 series manifolds.	0.1
<a href="#"><u>AM-52GS</u></a>	\$6.25	NITRA manifold mounting set, for use with AM-52 series manifolds.	0.1
<a href="#"><u>AM-53GS</u></a>	\$6.25	NITRA manifold mounting set, for use with AM-53 series manifolds.	0.1
<a href="#"><u>AM-54GS</u></a>	\$6.50	NITRA manifold mounting set, for use with AM-54 series manifolds.	0.1

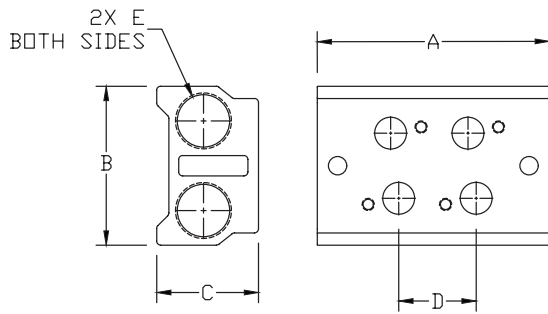


# Pneumatic Directional Control Solenoid Valve Manifolds and Accessories

## Dimensions

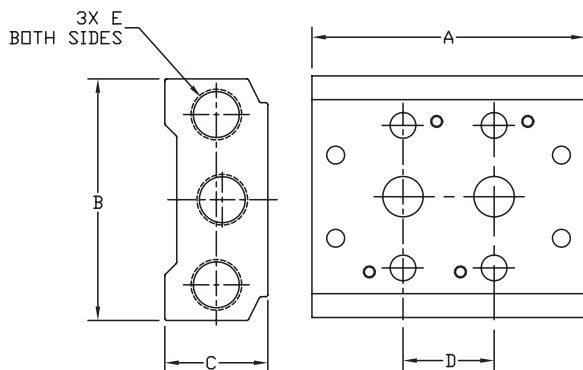
mm [inches]

### AM 3x Series Manifolds



MANIFOLD DIMENSIONS					
PART NO.	A	B	C	D	E
AM-312	57.0 [2.24]	39.0 [1.54]	25.0 [0.98]	19.0 [0.75]	1/4 NPT
AM-314	95.0 [3.74]			3X 19.0 [0.75]	
AM-316	133.0 [5.24]			5X 19.0 [0.75]	
AM-318	171.0 [6.73]			7X 19.0 [0.75]	
AM-322	69.0 [2.72]	45.0 [1.77]	25.0 [0.98]	23.0 [0.91]	1/4 NPT
AM-324	115.0 [4.53]			3X 23.0 [0.91]	
AM-326	161.0 [6.34]			5X 23.0 [0.91]	
AM-328	207.0 [8.15]			7X 23.0 [0.91]	
AM-332	82.0 [3.23]	52.0 [2.05]	29.0 [1.14]	28.0 [1.10]	3/8 NPT
AM-334	138.0 [5.46]			3X 28.0 [1.10]	
AM-336	194.0 [7.64]			5X 28.0 [1.10]	
AM-338	250.0 [9.84]			7X 28.0 [1.10]	

### AM 5x Series Manifolds



MANIFOLD DIMENSIONS					
PART NO.	A	B	C	D	E
AM-512	57.0 [2.24]	58.0 [2.28]	25.0 [0.98]	19.0 [0.75]*	1/4 NPT
AM-514	95.0 [3.74]			3X 19.0 [0.75]*	
AM-516	133.0 [5.24]			5X 19.0 [0.75]*	
AM-518	171.0 [6.73]			7X 19.0 [0.75]*	
AM-522	69.0 [2.72]	61.0 [2.40]	26.0 [1.02]	23.0 [0.91]	1/4 NPT
AM-524	115.0 [4.53]			3X 23.0 [0.91]	
AM-526	161.0 [6.34]			5X 23.0 [0.91]	
AM-528	207.0 [8.15]			7X 23.0 [0.91]	
AM-532	82.0 [3.23]	75.0 [2.95]	30.0 [1.19]	28.0 [1.10]	3/8 NPT
AM-534	138.0 [5.46]			3X 28.0 [1.10]	
AM-536	194.0 [7.64]			5X 28.0 [1.10]	
AM-538	250.0 [9.84]			7X 28.0 [1.10]	
AM-542	98.0 [3.86]	104.0 [4.09]	38.0 [1.50]	35.0 [1.38]	1/2 NPT
AM-544	168.0 [6.61]			3X 35.0 [1.38]	
AM-546	238.0 [9.37]			5X 35.0 [1.38]	
AM-548	308.0 [12.13]			7X 35.0 [1.38]	

\* Exhaust holes have 1mm offset from spacing centerline.

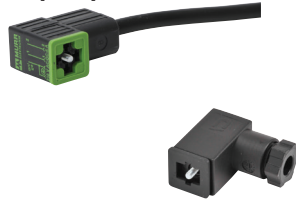
See our website [www.AutomationDirect.com](http://www.AutomationDirect.com) for complete Engineering drawings.

# Solenoid Valve Cables and Connectors



## 8mm Connectors

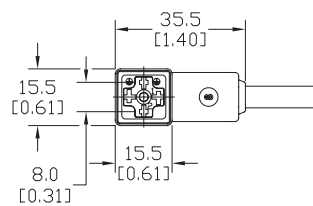
Dimensions shown  
mm [inches]



These high quality connectors and over-molded cables help reduce wiring time. The lower voltage models, 24V or 110V AC/DC, include built-in surge suppression, Yellow LED indicator and are rated for connecting with electronics. The 230V AC/DC models are rated for straight wired products. All models are available in five sizes based on DIN 43650.

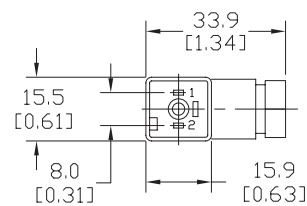
## Features

- 8mm, 9.4mm, 10mm, 11mm and 18mm square DIN styles
- Fits most popular solenoid valves and sensors
- Suppression and LED indication available in 24V or 110V AC/DC models
- PVC jacketed cables in 1, 3 or 5 meter lengths on select connectors
- Field wireable connectors on select models
- Polarity insensitive (follow solenoid, sensor, or other devices wiring diagram)



Height = 25mm [0.98in]

Connector with Cable



Height = 26mm [1.02]

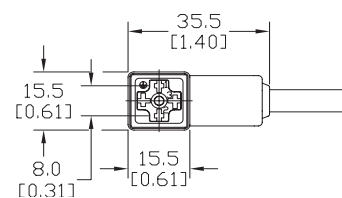
Field Wireable Connector

8mm (3-pole) Connectors (per DIN 43650 Form C)												
Part No.	Price	Voltage (AC/DC)	Current Rating	IP Rating	Wire Size	Cable Dia. (in.)	LED	Surge Protection	Wiring Figure	Screw Size/Torque	Weight (lbs)	Agency Approval
SC8-LS24-3	\$15.50	24 ±20%	max 4A	67	18 AWG	0.23	yes	zener diode (D-Z DO-15 47V 2W)	1	m2.5-0.45x25mm/ 0.4 Nm (3.5 in lb)	0.40	CSA (080128-0-000)
SC8-LS24-5	\$18.50								7		0.65	
SC8-LS110-3	\$19.00	110 ±10%	max 4A	67	18 AWG	0.23	yes	zener diode (D-Z DO-41 ZY200 2W)	7	m2.5-0.45x25mm/ 0.4 Nm (3.5 in lb)	0.41	CSA (080128-0-000)
SC8-LS110-5	\$22.00								7		0.63	
SC8-3	\$12.50	230	max 6A	65	Solid 12 AWG Stranded 14 AWG w/Ferrule 16 AWG	field wireable gland size 0.20 to 0.24	no	none	2	m2.5-0.45x25mm/ 0.5 Nm (4.4 in lb)	0.39	none
SC8-0	\$8.75								9		0.10	
SC8-1	\$19.00								9		0.10	
SC8-5	\$17.50								2		0.68	

Last digit in part number denotes cable length in meters, a 0 indicates field termination.

## 8mm Transmitter Connector

Dimensions shown  
mm [inches]



Height = 25mm [0.98in]

Connector with Cable

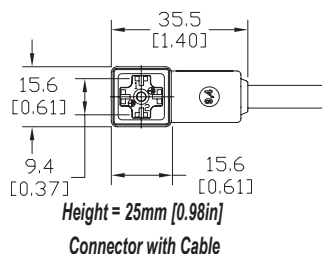
8mm (4-pole) Connectors (per DIN 43650 Form C)												
Part No.	Price	Voltage (AC/DC)	Current Rating	IP Rating	Wire Size	Cable Dia. (in.)	LED	Surge Protection	Wiring Figure	Screw Size/Torque	Weight (lbs)	Agency Approval
SC8-5T	\$23.50	230	max 6A	67	18 AWG	0.26	yes	none	8	m3-0.5x42mm/ 0.5 Nm (4.4 in lb)	0.80	CSA (080128-0-000)

Last numeric digit in part number denotes cable length in meters, a 0 indicates field termination.

# Solenoid Valve Cables and Connectors

## 9.4mm Connectors

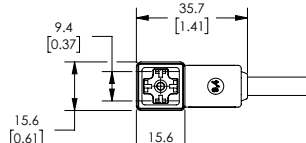
Dimensions shown  
mm [inches]



9.4mm (3-pole) Connectors (DIN Style, Form C Industrial)															
Part No.	Price	Voltage (AC/DC)	Current Rating	IP Rating	Wire Size	Cable Dia. (in.)	LED	Surge Protection	Wiring Figure	Screw Size/ Torque	Weight (lbs)	Agency Approval			
<a href="#">SC9-LS24-3</a>	\$15.50	24 ±20%	max 4A	67	18 AWG	0.23	yes	zener diode (D-Z DO-15 47V 2W)	1	m3-0.5x26mm/ 0.4 Nm (3.5 in lb)	0.40	CSA (080128-0-000)			
<a href="#">SC9-LS24-5</a>	\$18.50										0.64				
<a href="#">SC9-LS110-3</a>	\$19.00	110 ±10%											zener diode (D-Z DO-41 ZY200 2W)	7	0.40
<a href="#">SC9-LS110-5</a>	\$22.00												0.64		
<a href="#">SC9-3</a>	\$12.50	230	max 6A								no	none	2	0.40	none
<a href="#">SC9-5</a>	\$17.50													0.64	

## 9.4mm Connectors

Dimensions shown  
mm [inches]



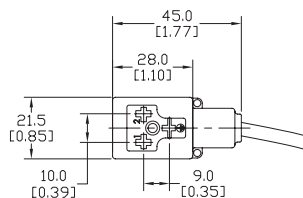
Height = 25mm [0.98in]  
Connector with Cable

9.4mm (4-pole) Connectors (DIN Style, Form C Industrial)													
Part No.	Price	Voltage (AC/DC)	Current Rating	IP Rating	Wire Size	Cable Dia.	Cable Length	LED	Surge Protection	Wiring Figure	Screw Size/Torque	Weight (lbs)	Agency Approval
<a href="#">7000-94141-6270300</a>	\$18.00	230 VAC/ VDC	max 6A	IP67	18 AWG	5.6–6.2 mm	9.8ft/3m	no	none	8	m3-0.5x26mm/ 0.4 Nm (3.5 in lb)	0.50	CSA (080128-0-000)/ RoHS
<a href="#">7000-94141-6270500</a>	\$24.00						16.4ft/5m					0.79	

# Solenoid Valve Cables and Connectors

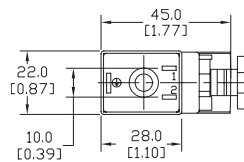
## 10mm Connectors

Dimensions shown  
mm [inches]



Height = 30mm [1.18in]

Connector with Cable



Height = 41mm [1.61in]

Field Wireable Connector

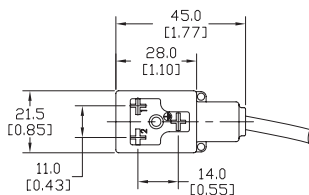
### 10mm (3-pole) Connectors (per DIN 43650 Form B)

Part No.	Price	Voltage (AC/DC)	Current Rating	IP Rating	Wire Size	Cable Dia. (in.)	LED	Surge Protection	Wiring Figure	Screw Size/ Torque	Weight (lbs)	Agency Approval		
<a href="#">SC10-LS24-3</a>	\$15.50	24 ±20%	max 4A	67	18 AWG	0.23	yes	zener diode (D-Z DO-15 47V 2W)	10	m3-0.5x30mm/ 0.4 Nm (3.5 in lb)	0.43	CSA (080128-0-000)		
<a href="#">SC10-LS24-5</a>	\$18.50										0.68			
<a href="#">SC10-LS110-3</a>	\$19.00	110 ±10%	max 1A					zener diode (D-Z DO-41 ZY200 2W)	6		0.43			
<a href="#">SC10-LS110-5</a>	\$22.00								0.68					
<a href="#">SC10-3</a>	\$12.50	230	max 10A						no		none		3	0.43
<a href="#">SC10-5</a>	\$17.50													
<a href="#">SC10-LS24-0</a>	\$12.50	24 ±20%	max 4A	65	Solid 12 AWG Stranded 14 AWG w/Ferrule 16 AWG	field wireable gland size 0.24 to 0.32	yes	zener diode (D-Z DO-15 47V 2W)	4	m3-0.5x42mm/ 0.5 Nm (4.4 in lb)	0.07	none		
<a href="#">SC10-LS110-0</a>	\$14.00	110 ±10%	max 1A						mov (SIOV S10 K130)		5		0.07	

Last digit in part number denotes cable length in meters, a 0 indicates field termination.

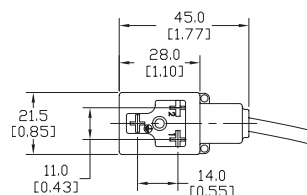
## 11mm Connectors

Dimensions shown  
mm [inches]



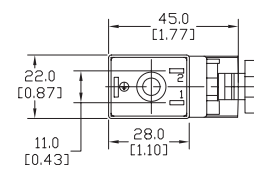
Height = 30mm [1.18in]

Connector with Cable



Height = 30mm [1.18in]

Reverse Connector with Cable



Height = 41mm [1.61in]

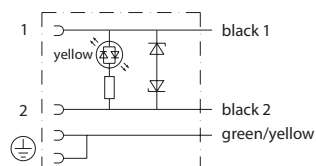
Field Wireable Connector

### 11mm (3-pole) Connectors (DIN Style, Form B Industrial)

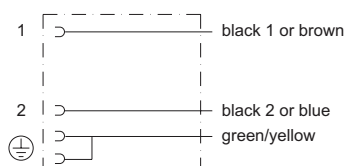
Part No.	Price	Voltage (AC/DC)	Current Rating	IP Rating	Wire Size	Cable Dia. (in)	LED	Surge Protection	Wiring Figure	Screw Size/ Torque	Weight (lbs)	Agency Approval
<a href="#">SC11-LS24-3</a>	\$15.50	24 ±20%	max 4A	67	18 AWG	0.23	yes	zener diode (D-Z DO-15 47V 2W)	10	m3-0.5x30mm/ 0.4 Nm (3.5 in lb)	0.44	CSA (080128-0-000)
<a href="#">SC11-LS24-5</a>	\$18.50							zener diode (D-Z DO-41 ZY200 2W)	6		0.67	
<a href="#">SC11-LS110-3</a>	\$19.00	110 ±10%	max 1A					zener diode (D-Z DO-15 47V 2W)	10		0.44	
<a href="#">SC11-LS110-5</a>	\$22.00							zener diode (D-Z DO-41 ZY200 2W)	6		0.67	
<a href="#">SC11-LS24-3R</a>	\$15.50	24 ±20%	max 4A					zener diode (D-Z DO-15 47V 2W)	10		0.44	
<a href="#">SC11-LS24-5R</a>	\$18.50							zener diode (D-Z DO-41 ZY200 2W)	6		0.67	
<a href="#">SC11-LS110-3R</a>	\$19.00	110 ±10%	max 1A				no	none	3		0.44	
<a href="#">SC11-LS110-5R</a>	\$22.00										0.67	
<a href="#">SC11-3</a>	\$12.50	230	max 10A				no	none	3		0.44	
<a href="#">SC11-5</a>	\$17.50										0.67	
<a href="#">SC11-LS24-0</a>	\$12.50	24 ±20%	max 4A	65	Solid 12 AWG Stranded 14 AWG w/Ferrule 16 AWG	field wireable gland size 0.24 to 0.32	yes	zener diode (D-Z DO-15 47V 2W)	4	m3-0.5x42mm/ 0.5 Nm (4.4 in lb)	0.07	none
<a href="#">SC11-LS110-0</a>	\$14.00	110 ±10%	max 1A					mov (SIOV S10 K130)	5		0.07	
<a href="#">SC11-0</a>	\$10.50	230	max 10A				no	none	9		0.07	

Last numeric digit in part number denotes cable length in meters, a 0 indicates field termination.

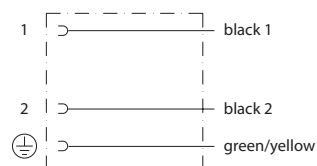
# Solenoid Valve Cables and Connectors Wiring Diagrams



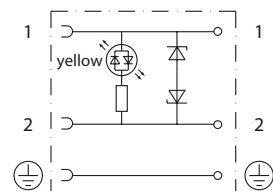
**Figure No. 1**



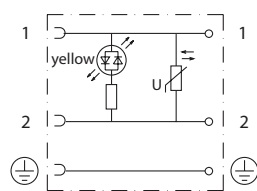
**Figure No. 2**



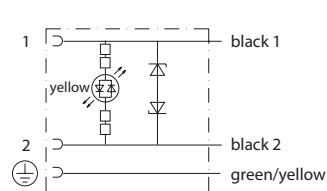
**Figure No. 3**



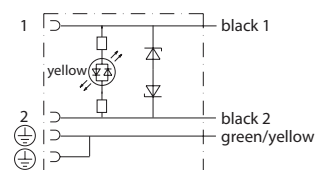
**Figure No. 4**



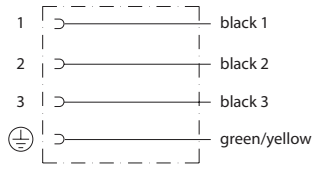
**Figure No. 5**



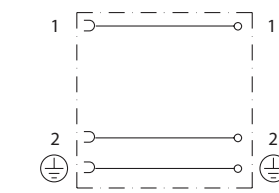
**Figure No. 6**



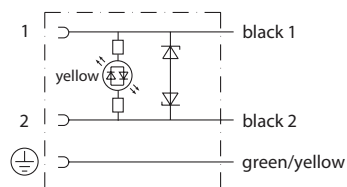
**Figure No. 7**



**Figure No. 8**



**Figure No. 9**



**Figure No. 10**



# Exhaust Silencers

NITRA™ exhaust silencers are available in three styles and nine popular NPT and BSPT sizes. Add these to the exhaust ports of NITRA directional control solenoid valves to reduce noise.

## Features

- Inch and metric sizes available
- Bronze cone and flat styles
- Plastic cylindrical
- Maximum pressure = 150 psi (10 bar)



SBC Series

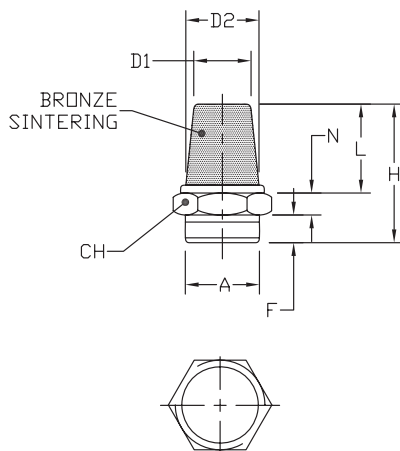


SBF Series



SPL Series

## SBC Silencers

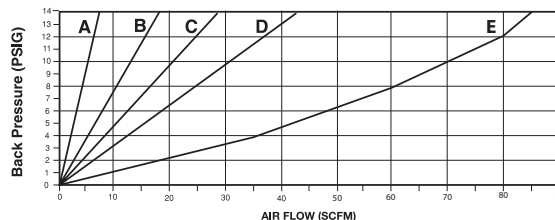


NITRA™ Bronze Cone Silencers											
Inch Sizes - dimensions in inches [mm]											
Part No.	Price	A	CH	D1	D2	F	H	L	N	Package Weight (lb)	Qty. per pack
<b><u>SBC-18N</u></b>	\$3.50	MNPT 1/8	0.47 [12.0]	0.32 [8.0]	0.28 [7.0]	0.24 [6.0]	0.94 [24.0]	0.55 [14.0]	0.16 [4.0]	0.01	2
<b><u>SBC-14N</u></b>	\$4.75	MNPT 1/4	0.63 [16.0]	0.47 [12.0]	0.40 [10.0]	0.32 [8.0]	1.18 [30.0]	0.71 [18.0]	0.16 [4.0]	0.01	
<b><u>SBC-38N</u></b>	\$6.75	MNPT 3/8	0.71 [18.0]	0.55 [14.0]	0.39 [11.0]	0.35 [9.0]	1.38 [35.0]	0.83 [21.0]	0.197 [5.0]	0.05	
<b><u>SBC-12N</u></b>	\$12.50	MNPT 1/2	0.94 [24.0]	0.75 [19.0]	0.59 [15.0]	0.40 [10.0]	1.73 [44.0]	1.10 [28.0]	0.24 [6.0]	0.15	
Metric Sizes - dimensions in inches [mm]											
<b><u>SBC-M5</u></b>	\$2.50	M5	0.31 [8.0]	0.20 [5.0]	0.16 [4.0]	0.20 [5.0]	0.79 [20.0]	0.47 [12.0]	0.12 [3.0]	0.01	2
<b><u>SBC-18R</u></b>	\$3.50	R 1/8	0.47 [12.0]	0.32 [8.0]	0.28 [7.0]	0.24 [6.0]	0.94 [24.0]	0.55 [14.0]	0.16 [4.0]	0.01	
<b><u>SBC-14R</u></b>	\$4.00	R 1/4	0.63 [16.0]	0.47 [12.0]	0.40 [10.0]	0.32 [8.0]	1.18 [30.0]	0.71 [18.0]	0.16 [4.0]	0.01	
<b><u>SBC-38R</u></b>	\$6.00	R 3/8	0.71 [18.0]	0.55 [14.0]	0.39 [11.0]	0.35 [9.0]	1.38 [35.0]	0.83 [21.0]	0.197 [5.0]	0.05	
<b><u>SBC-12R</u></b>	\$10.50	R 1/2	0.94 [24.0]	0.75 [19.0]	0.59 [15.0]	0.40 [10.0]	1.73 [44.0]	1.10 [28.0]	0.24 [6.0]	0.15	

## Flow Characteristics

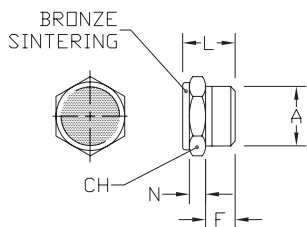
### Bronze Cone Silencers

- A: SBC-M5  
 B: SBC-18N; SBC-18R  
 C: SBC-14N; SBC-14R  
 D: SBC-38N; SBC-38R  
 E: SBC-12N; SBC-12R



Noise Elimination = > 20db  
 Filtered Element = 40 micron

## SBF Silencers



NITRA™ Bronze Flat Silencers								
Inch Sizes - dimensions in inches [mm]								
Part No.	Price	A	CH	F	L	N	Package Weight (lb)	Qty. per pack
<a href="#"><u>SBF-18N</u></a>	\$3.50	MNPT 1/8	0.47 [12.0]	0.24 [6.0]	0.47 [12.0]	0.16 [4.0]	0.01	2
<a href="#"><u>SBF-14N</u></a>	\$4.25	MNPT 1/4	0.67 [17.0]	0.32 [8.0]	0.59 [15.0]	0.16 [4.0]	0.01	
<a href="#"><u>SBF-38N</u></a>	\$7.25	MNPT 3/8	0.75 [19.0]	0.35 [9.0]	0.67 [17.0]	0.20 [5.0]	0.05	
<a href="#"><u>SBF-12N</u></a>	\$11.00	MNPT 1/2	0.94 [24.0]	0.40 [10.0]	0.71 [18.0]	0.24 [6.0]	0.15	
Metric Sizes - dimensions in inches [mm]								
<a href="#"><u>SBF-M5</u></a>	\$2.50	M5	0.31 [8.0]	0.20 [5.0]	0.35 [9.0]	0.12 [3.0]	0.01	2
<a href="#"><u>SBF-18R</u></a>	\$3.50	R 1/8	0.47 [12.0]	0.24 [6.0]	0.47 [12.0]	0.16 [4.0]	0.01	
<a href="#"><u>SBF-14R</u></a>	\$4.00	R 1/4	0.67 [17.0]	0.32 [8.0]	0.59 [15.0]	0.16 [4.0]	0.01	
<a href="#"><u>SBF-38R</u></a>	\$6.25	R 3/8	0.75 [19.0]	0.35 [9.0]	0.67 [17.0]	0.20 [5.0]	0.05	
<a href="#"><u>SBF-12R</u></a>	\$11.00	R 1/2	0.94 [24.0]	0.40 [10.0]	0.71 [18.0]	0.24 [6.0]	0.15	

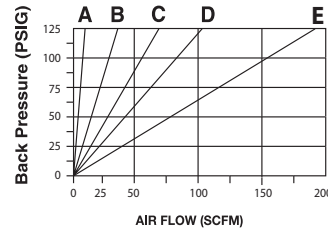


# Exhaust Silencers

## Flow Characteristics

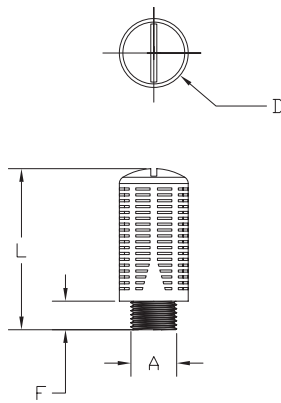
### Bronze Flat Silencers

- A: SBF-M5  
 B: SBF-18N; SBF-18R  
 C: SBF-14N; SBF-14R  
 D: SBF-28N; SBF-38R  
 E: SBF-12N; SBF-12R



Noise Elimination = > 30db  
 Filtered Element = 40 micron

### SPL Silencers



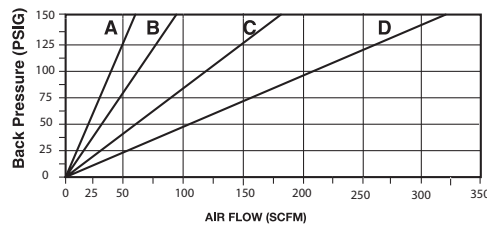
Note: SPL series plastic exhaust silencers have a maximum pressure of 80 PSI (5.5 bar).

NITRA™ Plastic Exhaust Silencers							
Inch Sizes - dimensions in inches [mm]							
Part No.	Price	A	D	L	F	Package Weight (lbs)	Qty. per pack
<a href="#"><u>SPL-18N</u></a>	\$2.75	MNPT 1/8	0.55 [13.8]	1.28 [32.4]	0.33 [8.3]	0.02	2
<a href="#"><u>SPL-14N</u></a>	\$3.00	MNPT 1/4	0.68 [17.3]	1.68 [42.5]	0.39 [9.9]	0.03	
<a href="#"><u>SPL-38N</u></a>	\$3.50	MNPT 3/8	0.87 [22.0]	2.10 [53.4]	0.40 [10.0]	0.06	
<a href="#"><u>SPL-12N</u></a>	\$3.50	MNPT 1/2	1.00 [25.4]	2.66 [67.6]	0.44 [11.1]	0.08	
Metric Sizes - dimensions in inches [mm]							
<a href="#"><u>SPL-18R</u></a>	\$2.75	R 1/8	0.60 [15.2]	1.33 [33.7]	0.24 [6.1]	0.02	2
<a href="#"><u>SPL-14R</u></a>	\$3.00	R 1/4	0.60 [18.8]	1.60 [40.6]	0.31 [7.7]	0.03	
<a href="#"><u>SPL-38R</u></a>	\$3.50	R 3/8	0.94 [24.0]	2.20 [55.9]	0.39 [9.9]	0.06	
<a href="#"><u>SPL-12R</u></a>	\$3.50	R 1/2	0.94 [24.0]	2.20 [55.9]	0.39 [9.9]	0.08	

## Flow Characteristics

### Plastic Silencers

- A: SPL-18N; SPL-18R  
 B: SPL-14N; SPL-14R  
 C: SPL-38N; SPL-38R  
 D: SPL-12N; SPL-12R



Noise Elimination = > 30db  
 Filtered Element = 40 micron