

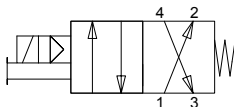


# Pneumatic Directional Control Solenoid Valves – BVS-4 Series



**BVS Series Solenoid with Leads**

**Valve Symbol**



NITRA pneumatic BVS-4 series modular solenoid valves are body ported 4-port (4-way) spool valve models have removable flying leads or DIN Form C connector. Units are only DIN rail mountable when used with BVM series manifolds.

## Features

- Body ported, 4-port (4-way) spool valves
- 1/4" (6mm) push-to-connect ports
- Flow coefficients (Cv) 0.8
- 2-position, single solenoid spring return
- 12VDC, 24VDC, 24VAC or 120VAC solenoid coils with LED status indication & surge suppression diode
- Flying leads or DIN Form C connection
- Lever manual operator - latching
- 2-year warranty



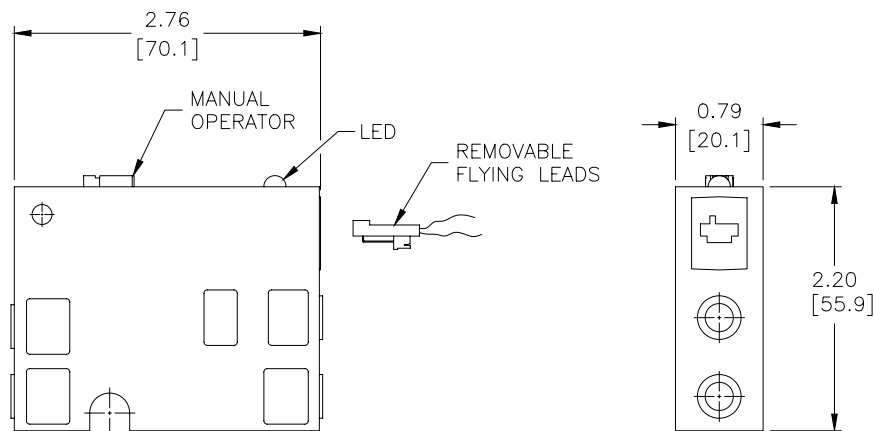
BVS (4-port, 2-position) 4 Series Specifications	
<b>Models</b>	<b>BVS-4251-24A</b>
<b>Price</b>	Retired
<b>Weight (lbs)</b>	0.2
<b>Acting</b>	Spool (2-Position)
<b>Port Size</b>	1/4" Push-to-Connect
<b>Orifice Size</b>	0.2" [5.0 mm] (Cv = 0.8)
<b>Fluid</b>	Air or Inert Gas (to be filtered by 40μ filter element)
<b>Min. / Max. Pressure</b>	30psi (2bar) - 120psi (8.3 bar)
<b>Vacuum</b>	Air pilot models can be used in vacuum applications with external air signal to pilot ports.
<b>Body</b>	Glass Reinforced Thermoplastic
<b>Voltage</b>	24VAC
<b>Inrush Power</b>	1.4 VA
<b>Continuous ON Power</b>	1.2 VA
<b>Expected Life</b>	20,000,000 cycles at max 3 cycles/second
<b>Wiring</b>	Removable 18" Flying Leads
<b>Response Time</b>	0.016 sec
<b>Temperature - Operation and Storage</b>	0~120°F (-18~49°C)
<b>Lubrication</b>	Not Required
<b>Protection</b>	IP 65



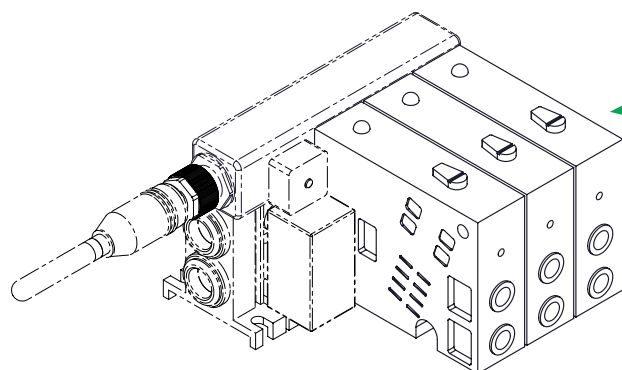
# Pneumatic Directional Control Solenoid Valves – BVS-4 Series

## Dimensions

inches [mm]



**BVS 4 Series w/Removable Leads**



**BVM 4 Series Solenoid Valve**

See our website [www.AutomationDirect.com](http://www.AutomationDirect.com) for complete Engineering drawings.