



Pneumatic Directional Control Solenoid Valves – BVS-3 Series Low Current



BVS Series Solenoid with Leads



**BVS Series Solenoid with DIN
43650 Form C**

NITRA pneumatic BVS-3 series modular solenoid valves are body ported 3-port (3-way) poppet valves available in 2-position, normally open or normally closed configurations. Most models have removable flying leads that can be used with BVM series manifolds. Four models are available with an 8 mm Micro DIN connector. Units are only DIN rail mountable when used with BVM series manifolds.

Features

- Body ported, 3-port (3-way) poppet valves
- 5/32" (4mm) push-to-connect ports
- Flow coefficients (Cv) of 0.02
- 2-position, single solenoid spring return
- Normally open or normally closed
- 3VDC, 5VDC, 12VDC or 24VDC solenoid coils with LED status indication & surge suppression diode
- Flying leads or 8mm DIN connection
- Pushbutton manual operator
- 2-year warranty



Valve Symbols

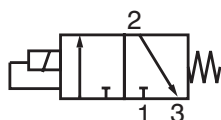


Diagram A 3/2 NC

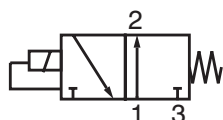


Diagram B 3/2 NO

BVS (3-port, 2-position) Low Current Series Specifications

Models	<u>BVS-32A1-3DL</u>	<u>BVS-32A1-5DL</u>	<u>BVS-32C1-3DL</u>
Price	\$21.00	\$21.00	\$21.00
Weight (lbs)	0.1		
Valve Type	Normally Open		Normally Closed
Acting	Direct Solenoid Poppet		
Diagram	B		A
Port Size	5/32" (4mm) Push-to-Connect		
Orifice Size	0.9 mm (Cv=0.02)		
Fluid	Air or Inert Gas (to be filtered by 40µ filter element)		
Min. / Max. Pressure	0 - max 37psi (2.5 bar)		0 - max 45psi (3bar)
Vacuum	28 in. Hg		
Body	Glass Reinforced Thermoplastic		
Voltage	3VDC	5VDC	3VDC
Inrush Power	0.56 W	0.50 W	0.56 W
Continuous ON Power	0.51 W	0.47 W	0.51 W
Expected Life	50,000,000 cycles at max 3 cycles/second		
Wiring	Removable 18" Flying Leads		
Response Time	0.01 sec		
Temperature - Operation and Storage	0~120°F (-18~49°C)		
Lubrication	Not Required		
Protection	n/a		



Pneumatic Directional Control Solenoid Valves – BVS-3 Series Low Current

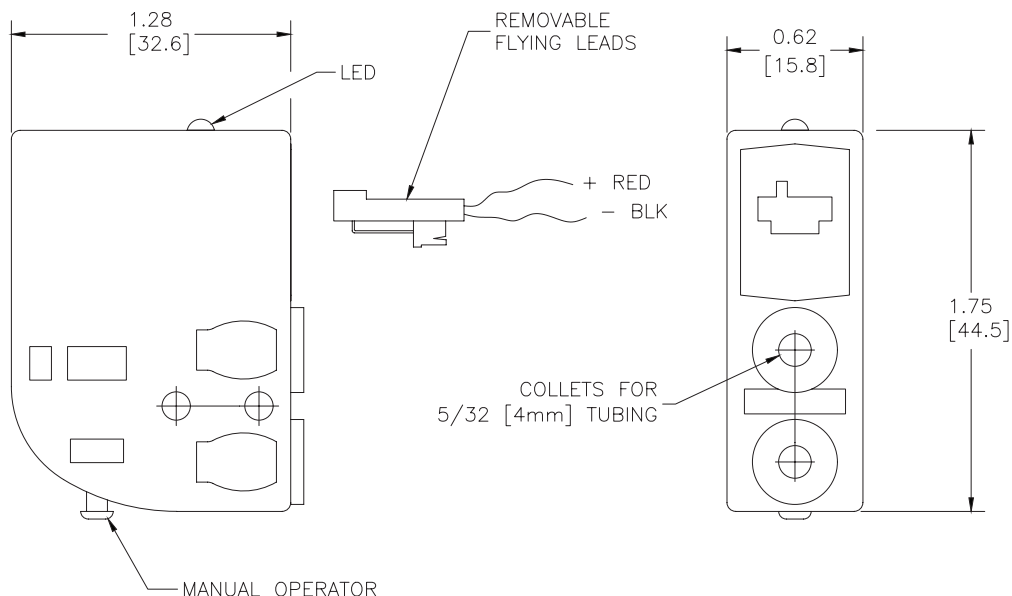
BVS (3-port, 2-position) Low Current Series Specifications			
Models	BVS-32A2-3DL	BVS-32A2-5DL	BVS-32C2-3DL
Price	\$21.00	\$21.00	\$21.00
Weight (lbs)	0.1		
Valve Type	Normally Open		Normally Closed
Acting	Direct Solenoid Poppet		
Diagram	B		A
Port Size	5/32" (4mm) Push-to-Connect		
Orifice Size	0.9 mm (Cv=0.02)		
Fluid	Air or Inert Gas (to be filtered by 40µ filter element)		
Min. / Max. Pressure	0 - max 37psi (2.5 bar)		0 - max 45psi (3bar)
Vacuum	28 in. Hg		
Body	Glass Reinforced Thermoplastic		
Voltage	3VDC	5VDC	3VDC
Inrush Power	0.56 W	0.50 W	0.56 W
Continuous ON Power	0.51 W	0.47 W	0.51 W
Expected Life	50,000,000 cycles at max 3 cycles/second		
Wiring	DIN 43650 Form C		
Response Time	0.01 sec		
Temperature - Operation and Storage	0~120°F (-18~49°C)		
Lubrication	Not Required		
Protection	IP 65		



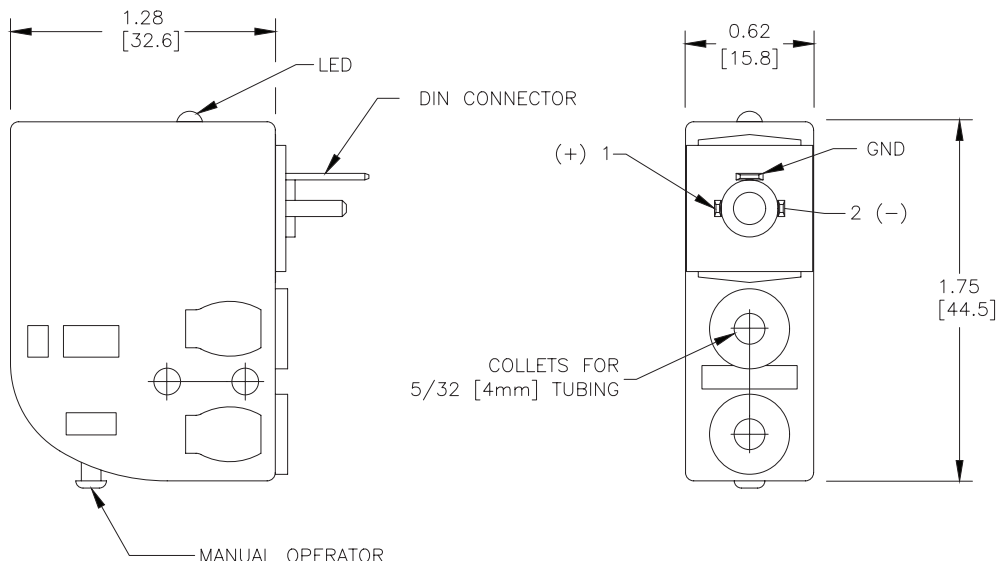
Pneumatic Directional Control Solenoid Valves – BVS-3 Series Dimensions

Dimensions

inches [mm]



BVS w/Removable Leads

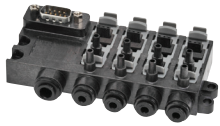


BVS w/DIN 43650 Form C

See our website www.AutomationDirect.com for complete Engineering drawings.



Manifolds for Modular Solenoid Valves – BVM-3 Series



BVM - 4-Station

NITRA pneumatic BVM-3 series modular manifolds simplify the mounting and wiring of BVS-3 series solenoid valves*. Made of sturdy glass reinforced thermoplastic with DIN rail mounting clips included, they are available in 4 and 8-station models. Push-to-connect inlet and out connections and a 9-pin D-sub connector allow quick and easy tubing and wiring.

Features

- No tools required to install/remove valves
- 2, 3, 4 or 8-station manifolds available
- 6mm or 1/4" tube inlets
- 35mm DIN rail mounting clips included
- 9-pin D-sub connector for easy wiring
- 2-year warranty



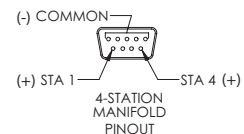
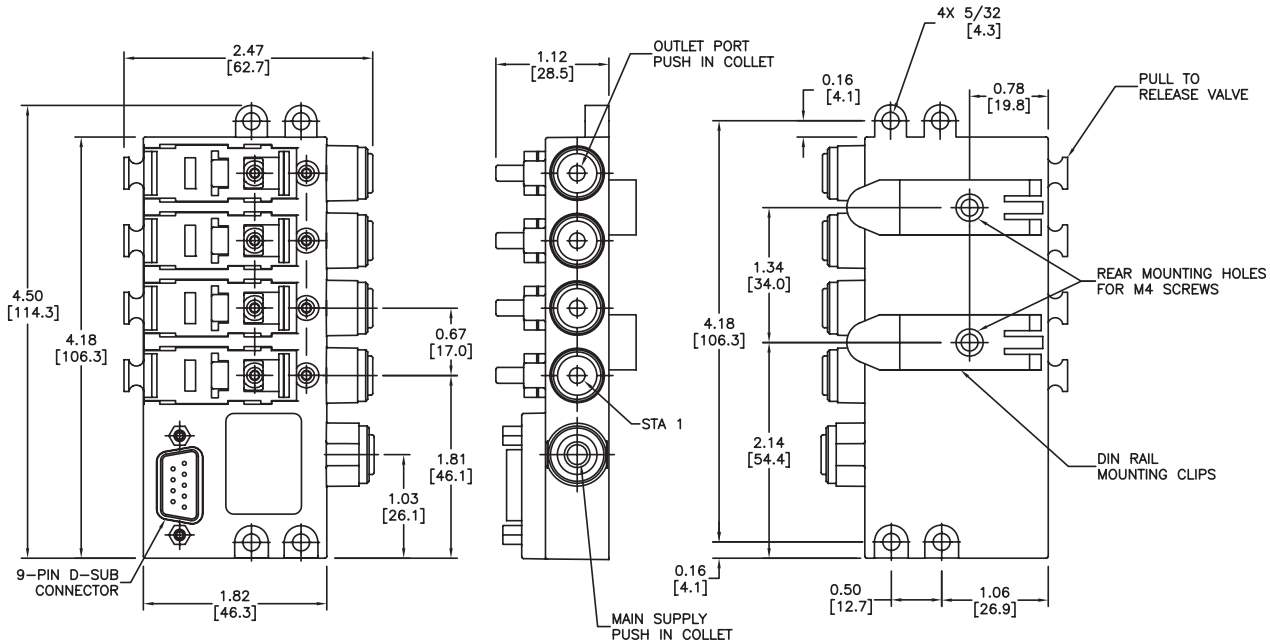
BVM Series Manifolds						
Part No.	Stations	Inlet	Outlet	Connection	Price	Weight (lbs)
BVM-346M	4	6mm	5/32" (4mm)	9-pin D-sub	Retired	0.3

* Works with BVS series valves with flying leads ONLY. Does not accept DIN connector valves

Dimensions

inches [mm]

4-Station Manifold



See our website www.AutomationDirect.com for complete Engineering drawings.

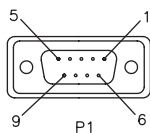


Pneumatic Directional Control Solenoid Valves – BVS Series - Accessories

Accessories

BVM Series Manifold Accessories			
Part No.	Description	Price	Weight (lbs)
<u>ZL-DB9F-CBL-2P</u>	ZIPLink pigtail cable with 9-pin D-sub female connector, 28AWG, 2.0 meter (6.6 ft) length	\$12.00	0.3
<u>ZL-DB9F-CBL-5P</u>	ZIPLink pigtail cable with 9-pin D-sub female connector, 28AWG, 5.0 meter (16.4 ft) length	\$22.50	0.5

ZL-DB9F-CBL-xP Pinout



pin out

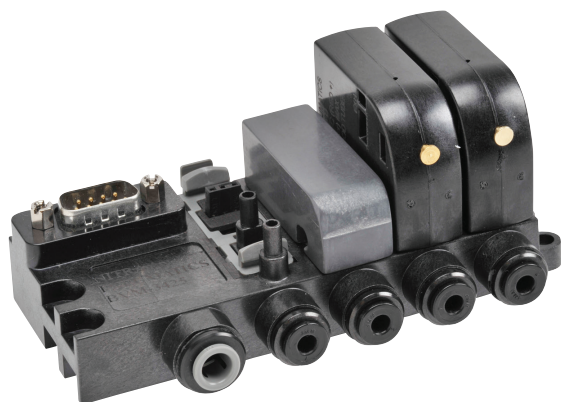
P1	P2	for BVM Series 4-station man	for BVM Series 8-station man
1	black	N/A	station 4
2	brown	N/A	station 3
3	red	N/A	station 2
4	orange	N/A	station 1
5	yellow	common	common
6	green	station 1	station 5
7	blue	station 2	station 6
8	violet	station 3	station 7
9	grey	station 4	station 8



ZL-DB9F-CBL-xP



See solenoid valve cables and connectors section



Above photo shows an assembled BVM Series manifold with BVS Series Solenoids and BVM blanking plug

Note: Manifold must have a BVS valve (flying leads ONLY)