



# C-Series Pneumatic Cylinders Accessories

| C-Series Pneumatic Cylinder Accessories |  |         |         |         |
|---|--|---------|---------|---------|
| Part Number                             | Description  | Pcs/Pkg | Wt (lb) | Price   |
| <b><u>CCB-17</u></b>                    | Clevis bracket, anodized aluminum, stainless steel pin, for use with CRP-09, CRP-12 or CRP-17 Rod Eyes   | 1       | 0.20    | \$25.00 |
| <b><u>CCB-40</u></b>                    | Clevis bracket, anodized aluminum, stainless steel pin, for use with CRP-24 or CRP-40 Rod Eyes   | 1       | 0.30    | \$36.00 |
| <b><u>CCB-48</u></b>                    | Clevis bracket, anodized aluminum, stainless steel pin, for use with CRP-48 Rod Eye  | 1       | 0.40    | \$47.50 |
| <b><u>CRP-09</u></b>                    | Rod eye, #8-32 UNC threads, zinc plated, high strength, heat treated alloy steel, bronze pivot bushing and nut for use with 9/16 inch bore NITRA C-series compact cylinders        | 1       | 0.10    | \$16.00 |
| <b><u>CRP-12</u></b>                    | Rod eye, #10-32 UNF threads, zinc plated, high strength, heat treated alloy steel, bronze pivot bushing and nut for use with 3/4 inch bore NITRA C-series compact cylinders        | 1       | 0.10    | \$18.50 |
| <b><u>CRP-17</u></b>                    | Rod eye, 5/16-24 UNF threads, zinc plated, high strength, heat treated alloy steel, bronze pivot bushing and nut for use with 1-1/16 inch bore NITRA C-series compact cylinders    | 1       | 0.20    | \$17.50 |
| <b><u>CRP-24</u></b>                    | Rod eye, 3/8-24 UNF threads, zinc plated, high strength, heat treated alloy steel, bronze pivot bushing and nut for use with 1-1/2 inch bore NITRA C-series compact cylinders      | 1       | 0.30    | \$19.00 |
| <b><u>CRP-40</u></b>                    | Rod eye, 1/2-20 UNF threads, zinc plated, high strength, heat treated alloy steel, bronze pivot bushing and nut for use with 2 or 2-1/2 inch bore NITRA C-series compact cylinders | 1       | 0.40    | \$19.00 |
| <b><u>CRP-48</u></b>                    | Rod eye, 5/8-18 UNF threads, zinc plated, high strength, heat treated alloy steel, bronze pivot bushing and nut for use with 3 inch bore NITRA C-series compact cylinders          | 1       | 0.50    | \$21.50 |

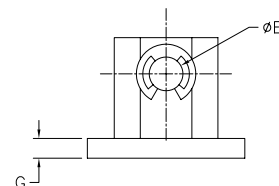
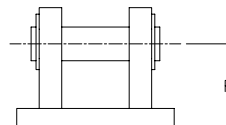
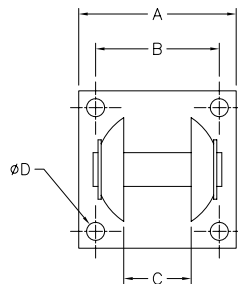


Photo shows C-series pneumatic cylinder with optional clevis bracket and rod eye.

## CCB Clevis Brackets



Part No. **CCB-40**



Dimensions inches [mm]

| PART NUMBER | A              | B              | C              | D             | E              | F              | G             |
|-------------|----------------|----------------|----------------|---------------|----------------|----------------|---------------|
| CCB-17      | 1.00<br>[25.4] | 0.75<br>[19.1] | 0.39<br>[9.9]  | #6            | 0.19<br>[4.8]  | 0.56<br>[14.2] | 0.16<br>[4.1] |
| CCB-40      | 1.75<br>[44.5] | 1.38<br>[35.1] | 0.75<br>[19.1] | #10           | 0.38<br>[9.7]  | 0.94<br>[23.9] | 0.22<br>[5.6] |
| CCB-48      | 2.50<br>[63.5] | 2.00<br>[50.8] | 1.00<br>[25.4] | 0.25<br>[6.4] | 0.63<br>[16.0] | 1.25<br>[31.8] | 0.25<br>[6.4] |

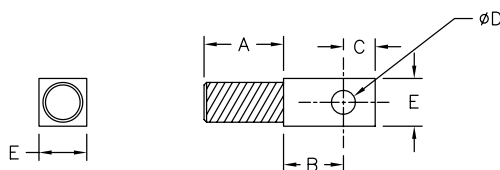


# C-Series Pneumatic Cylinders Accessories

## CRP Rod Eyes



**Part No. CRP-24**



| PART NUMBER | CYLINDER BORE SIZE | THREAD SIZE | A              | B              | C              | ØD             | E              |
|-------------|--------------------|-------------|----------------|----------------|----------------|----------------|----------------|
| CRP-09      | 9/16"<br>[14.3]    | #8-32 UNC   | 0.38<br>[9.6]  | 0.47<br>[11.9] | 0.25<br>[6.4]  | 0.19<br>[4.8]  | 0.38<br>[9.6]  |
| CRP-12      | 3/4"<br>[19.1]     | #10-32 UNF  | 0.38<br>[9.6]  | 0.47<br>[11.9] | 0.25<br>[6.4]  | 0.19<br>[4.8]  | 0.38<br>[9.6]  |
| CRP-17      | 1 1/16"<br>[27.0]  | 5/16-24 UNF | 0.63<br>[16.0] | 0.47<br>[11.9] | 0.25<br>[6.4]  | 0.19<br>[4.8]  | 0.38<br>[9.6]  |
| CRP-24      | 1 1/2"<br>[38.1]   | 3/8-24 UNF  | 0.63<br>[16.0] | 0.72<br>[18.3] | 0.44<br>[11.2] | 0.38<br>[9.6]  | 0.75<br>[19.1] |
| CRP-40      | 2.00"<br>[50.8]    | 1/2-20 UNF  | 0.75<br>[19.1] | 0.72<br>[18.3] | 0.44<br>[11.2] | 0.38<br>[9.6]  | 0.75<br>[19.1] |
| CRP-40      | 2 1/2"<br>[63.5]   | 1/2-20 UNF  | 0.75<br>[19.1] | 0.72<br>[18.3] | 0.44<br>[11.2] | 0.38<br>[9.6]  | 0.75<br>[19.1] |
| CRP-48      | 3.00"<br>[76.2]    | 5/8-18 UNF  | 0.88<br>[22.4] | 1.00<br>[25.4] | 0.63<br>[16.0] | 0.63<br>[16.0] | 1.00<br>[25.4] |

*Dimensions inches [mm]*