



# A-Series Pneumatic Cylinders

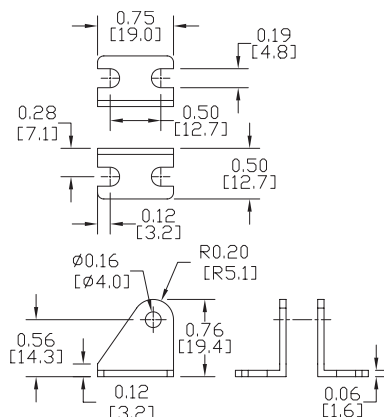
## 7/16 inch Bore Accessories

A-Series Pneumatic Cylinder 7/16 inch Bore Accessories				
Part Number	Description	Pcs/Pkg	Wt (lb)	Price
<b><u>APB-1</u></b>	Cylinder pivot mounting bracket without pivot pin used to mount 7/16 and 9/16 inch bore NITRA pneumatic stainless steel round body, interchangeable, non-repairable cylinders.	1	0.1	\$4.50
<b><u>AMB-3</u></b>	Cylinder mounting bracket used to mount 7/16 inch bore NITRA pneumatic stainless steel round body, interchangeable, non-repairable cylinders.	1	0.1	\$4.25
<b><u>AMB-4</u></b>	Cylinder mounting bracket used to mount 7/16 and 9/16 inch bore NITRA pneumatic stainless steel round body, interchangeable, non-repairable cylinders.	1	0.1	\$4.50
<b><u>ARC-10-32</u></b>	Cylinder rod clevis and hex nut, #10-32 thread, for use with 7/16 and 9/16 inch bore NITRA pneumatic stainless steel round body, interchangeable, non-repairable cylinders.	1	0.1	\$4.50
<b><u>AN-38-24</u></b>	Cylinder mounting nut with 3/8-24 UNF-2B threads used to mount 7/16 inch bore NITRA pneumatic stainless steel round body, interchangeable, non-repairable cylinders.	1	0.1	\$1.25
<b><u>AN-716-20</u></b>	Cylinder mounting nut with 7/16-20 UNF-2B threads used to mount 7/16 inch and 9/16 inch bore NITRA pneumatic stainless steel round body, interchangeable, non-repairable cylinders.	1	0.2	\$1.25

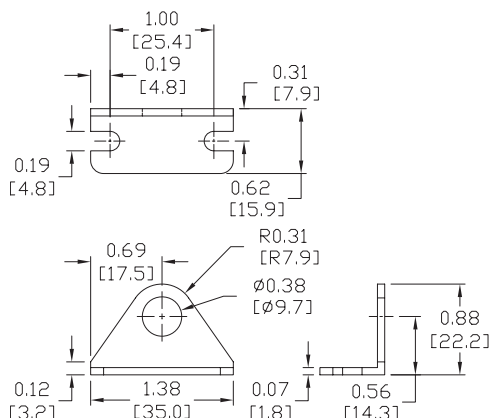
### Dimensions

inches [mm]

#### APB-1



#### AMB-3





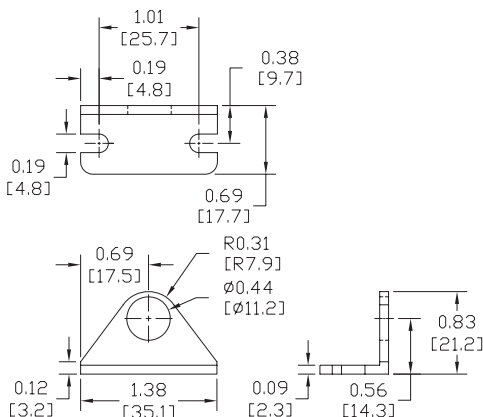
# A-Series Pneumatic Cylinders

## 7/16 inch Bore Accessories

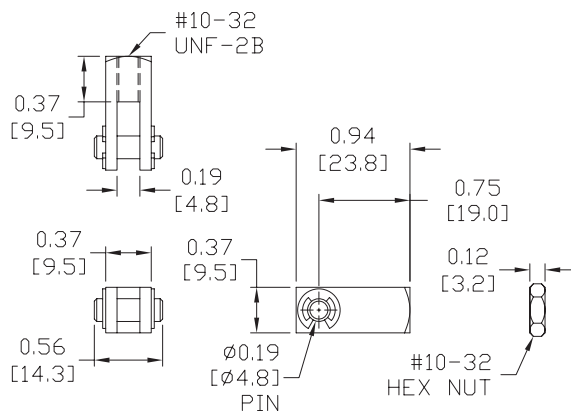
### Dimensions

inches [mm]

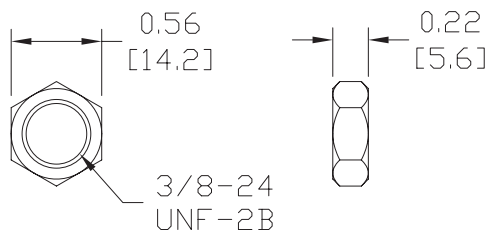
#### AMB-4



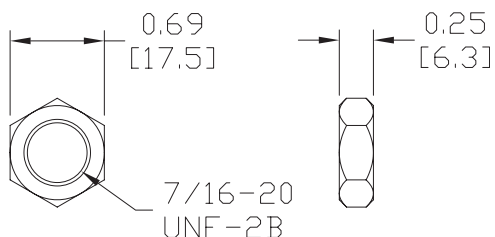
#### ARC-10-32



#### AN-38-24



#### AN-716-20





# A-Series Pneumatic Cylinders

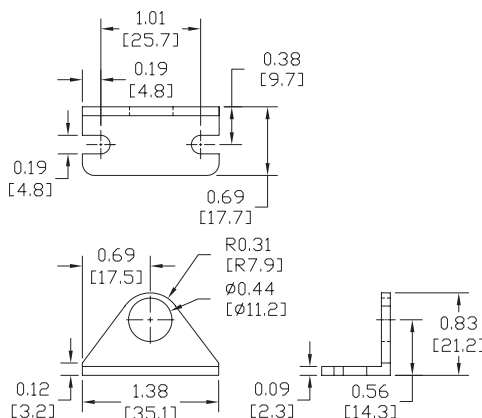
## 9/16 inch Bore Accessories

A-Series Pneumatic Cylinder 9/16 inch Bore Accessories				
Part Number	Description	Pcs/Pkg	Wt (lb)	Price
<b>AMB-4</b>	Cylinder mounting bracket used to mount 7/16 and 9/16 inch bore NITRA pneumatic stainless steel round body, interchangeable, non-repairable cylinders.	1	0.1	\$4.50
<b>ARC-10-32</b>	Cylinder rod clevis and hex nut, #10-32 thread, for use with 7/16 and 9/16 inch bore NITRA pneumatic stainless steel round body, interchangeable, non-repairable cylinders.	1	0.1	\$4.50
<b>APBP-2</b>	Cylinder pivot mounting bracket with pivot pin used to mount 9/16 inch bore NITRA pneumatic stainless steel round body, interchangeable, non-repairable cylinders.	1	0.1	\$5.25
<b>AN-716-20</b>	Cylinder mounting nut with 7/16-20 UNF-2B threads used to mount 7/16 inch and 9/16 inch bore NITRA pneumatic stainless steel round body, interchangeable, non-repairable cylinders.	1	0.2	\$1.25

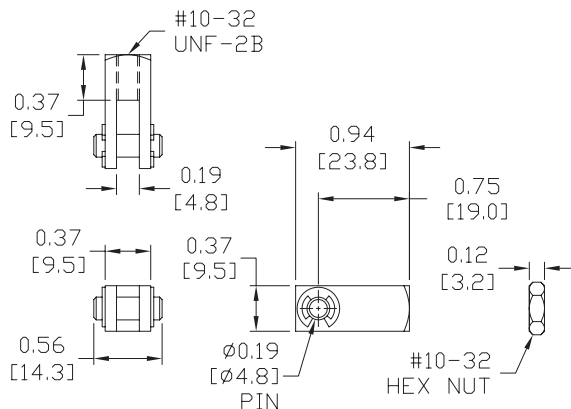
### Dimensions

inches [mm]

#### AMB-4



#### ARC-10-32





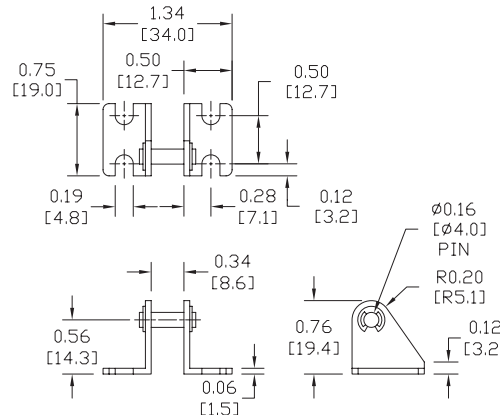
# A-Series Pneumatic Cylinders

## 9/16 inch Bore Accessories

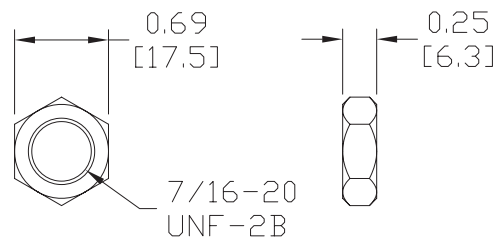
### Dimensions

inches [mm]

#### APBP-2



#### AN-716-20





# A-Series Pneumatic Cylinders

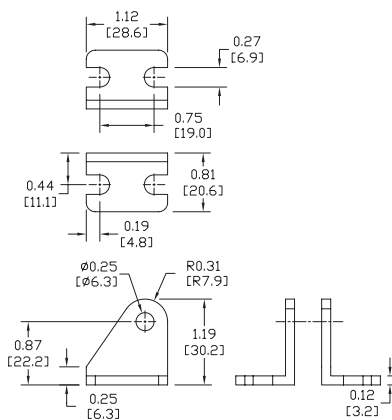
## 3/4 inch Bore Accessories

A-Series Pneumatic Cylinder 3/4 inch Bore Accessories				
Part Number	Description	Pcs/Pkg	Wt (lb)	Price
<b>APB-2</b>	Cylinder pivot mounting bracket without pivot pin used to mount 3/4, 7/8, and 1-1/16 inch bore NITRA pneumatic stainless steel round body, interchangeable, non-repairable cylinders.	1	0.1	\$4.50
<b>AMB-5</b>	Cylinder mounting bracket used to mount 3/4 inch bore NITRA pneumatic stainless steel round body, interchangeable, non-repairable cylinders.	1	0.1	\$4.00
<b>AMB-6</b>	Cylinder mounting bracket used to mount 3/4, 7/8, and 1-1/16 inch bore NITRA pneumatic stainless steel round body, interchangeable, non-repairable cylinders.	1	0.1	\$4.75
<b>ARC-14-28</b>	Cylinder rod clevis and hex nut, 1/4-28 thread, for use with 3/4 and 7/8 inch bore NITRA pneumatic stainless steel round body, interchangeable, non-repairable cylinders.	1	0.1	\$4.75
<b>AN-58-18</b>	Cylinder mounting nut with 5/8-18 UNF-2B threads used to mount 3/4, 7/8 and 1-1/16 inch bore NITRA pneumatic stainless steel round body, interchangeable, non-repairable cylinders.	1	0.1	\$1.25
<b>AN-12-20</b>	Cylinder mounting nut with 1/2-10 UNF-2B threads used to mount 3/4 inch bore NITRA pneumatic stainless steel round body, interchangeable, non-repairable cylinders.	1	0.2	\$1.25

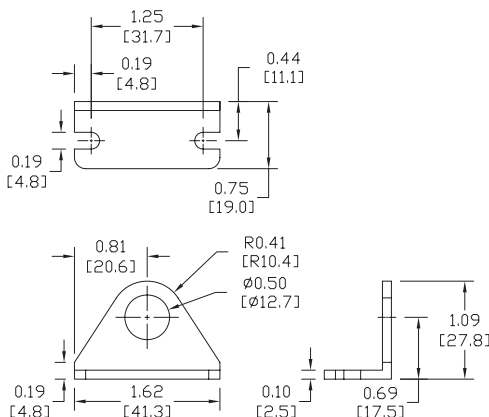
### Dimensions

inches [mm]

#### APB-2



#### AMB-5





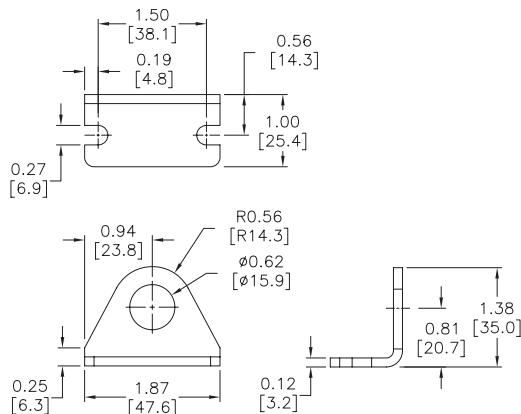
# A-Series Pneumatic Cylinders

## 3/4 inch Bore Accessories

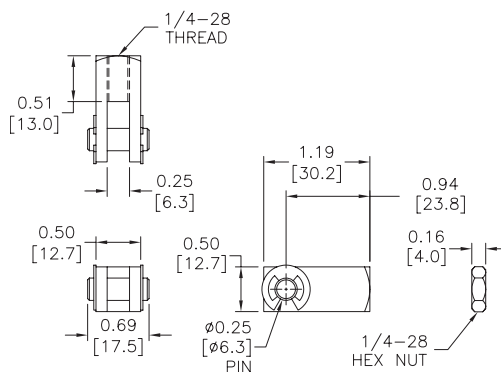
### Dimensions

inches [mm]

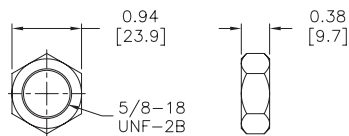
#### AMB-6



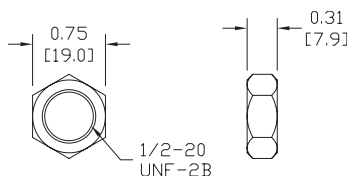
#### ARC-14-28



#### AN-58-18



#### AN-12-20





# A-Series Pneumatic Cylinders

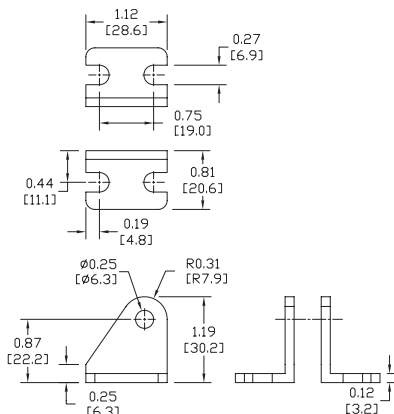
## 7/8 inch Bore Accessories

A-Series Pneumatic Cylinder 7/8 inch Bore Accessories				
Part Number	Description	Pcs/Pkg	Wt (lb)	Price
<b>APB-2</b>	Cylinder pivot mounting bracket without pivot pin used to mount 3/4, 7/8, and 1-1/16 inch bore, NITRA pneumatic, stainless steel, round body, interchangeable, non-repairable cylinders.	1	0.1	\$4.50
<b>AMB-6</b>	Cylinder mounting bracket used to mount 3/4, 7/8, and 1-1/16 inch bore NITRA pneumatic, stainless steel, round body, interchangeable, non-repairable cylinders.	1	0.1	\$4.75
<b>APBP-3</b>	Cylinder pivot mounting bracket with pivot pin used to mount 7/8 inch bore NITRA pneumatic, stainless steel, round body, interchangeable, non-repairable cylinders.	1	0.1	\$5.25
<b>ARC-14-28</b>	Cylinder rod clevis and hex nut, 1/4-28 thread, for use with 3/4 and 7/8 inch bore NITRA pneumatic, stainless steel, round body, interchangeable, non-repairable cylinders.	1	0.1	\$4.75
<b>AN-58-18</b>	Cylinder mounting nut with 5/8-18 UNF-2B threads used to mount 3/4, 7/8 and 1-1/16 inch bore NITRA pneumatic, stainless steel, round body, interchangeable, non-repairable cylinders.	1	0.1	\$1.25

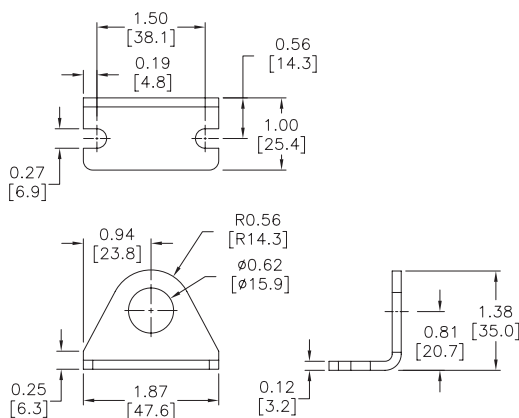
### Dimensions

inches [mm]

#### APB-2



#### AMB-6





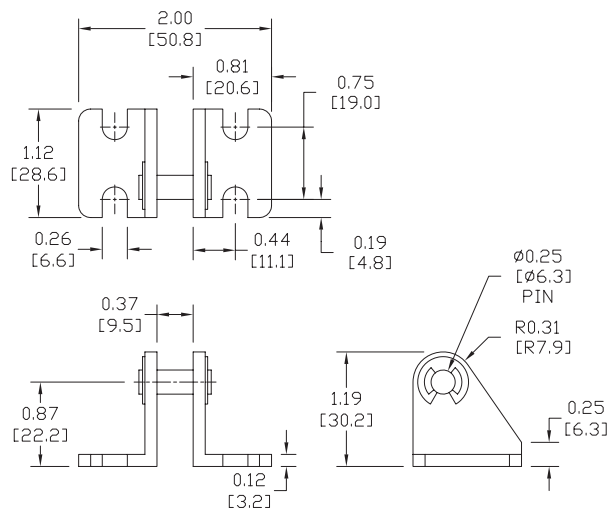
# A-Series Pneumatic Cylinders

## 7/8 inch Bore Accessories

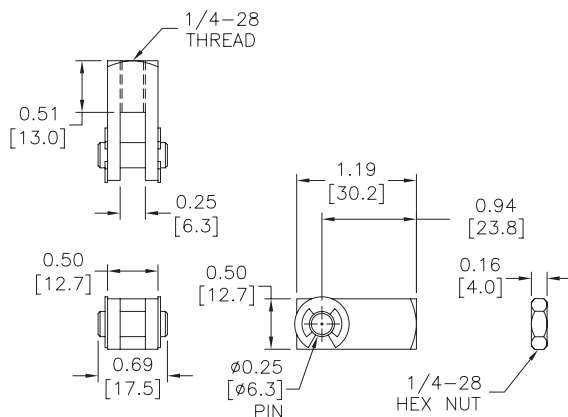
### Dimensions

inches [mm]

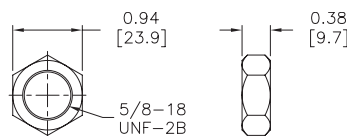
#### APBP-3



#### ARC-14-28



#### AN-58-18







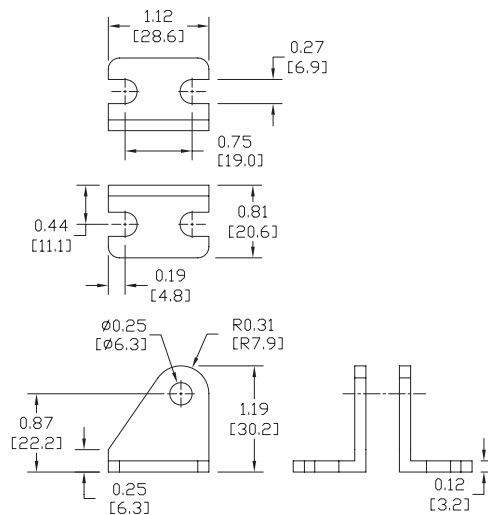
# A-Series Pneumatic Cylinders 1-1/16 inch Bore Accessories

A-Series Pneumatic Cylinder 1-1/16 inch Bore Accessories				
Part Number	Description	Pcs/Pkg	Wt (lb)	Price
<b>APB-2</b>	Cylinder pivot mounting bracket without pivot pin used to mount 3/4, 7/8, and 1-1/16 inch bore NITRA pneumatic stainless steel round body, interchangeable, non-repairable cylinders.	1	0.2	\$4.50
<b>AMB-6</b>	Cylinder mounting bracket used to mount 3/4, 7/8, and 1-1/16 inch bore NITRA pneumatic stainless steel round body, interchangeable, non-repairable cylinders.	1	0.1	\$4.75
<b>ARC-516-24</b>	Cylinder rod clevis and hex nut, 5/16-24 thread, for use with 1-1/16 inch bore NITRA pneumatic stainless steel round body, interchangeable, non-repairable cylinders.	1	0.1	\$5.50
<b>AN-58-18</b>	Cylinder mounting nut with 5/8-18 UNF-2B threads used to mount 3/4, 7/8 and 1-1/16 inch bore NITRA pneumatic stainless steel round body, interchangeable, non-repairable cylinders.	1	0.1	\$1.25

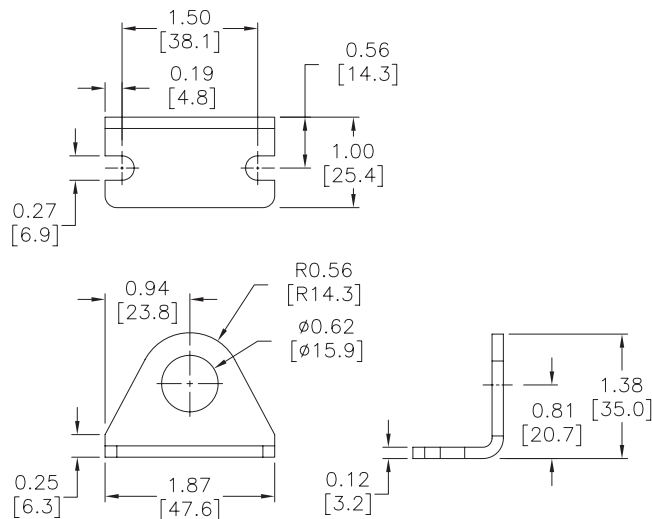
## Dimensions

inches [mm]

### APB-2



### AMB-6





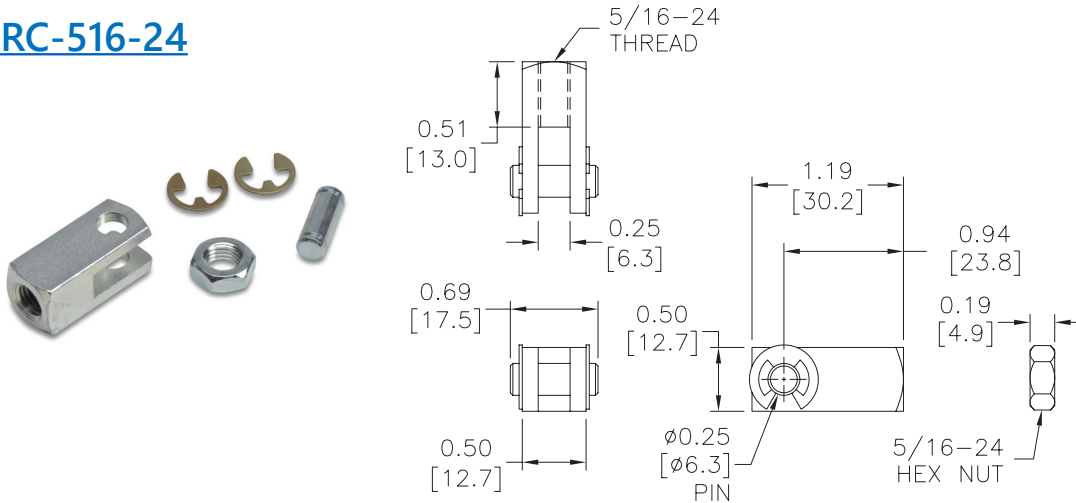
# A-Series Pneumatic Cylinders

## 1-1/16 inch Bore Accessories

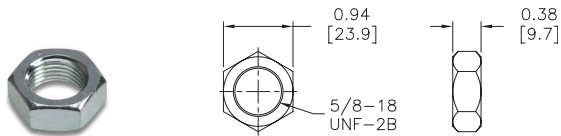
### Dimensions

inches [mm]

#### ARC-516-24



#### AN-58-18





# A-Series Pneumatic Cylinders

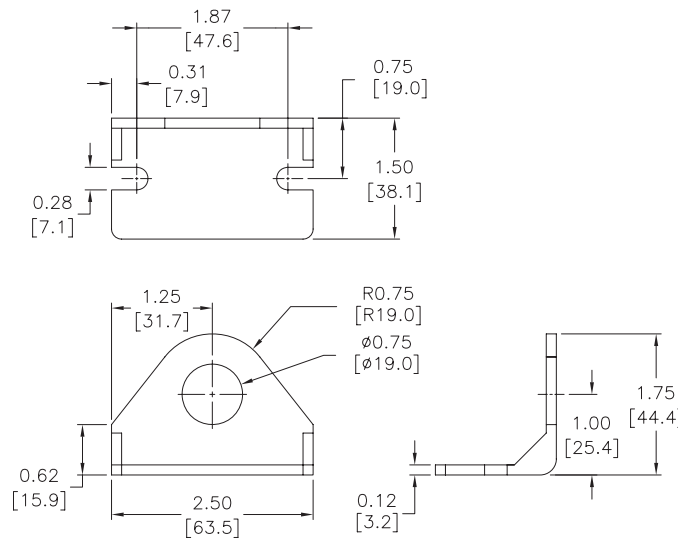
## 1-1/4 inch Bore Accessories

A-Series Pneumatic Cylinder 1-1/4 inch Bore Accessories				
Part Number	Description	Pcs/Pkg	Wt (lb)	Price
<b>AMB-7</b>	Cylinder mounting bracket used to mount 1-1/4 and 1-1/2 inch bore NITRA pneumatic stainless steel round body, interchangeable, non-repairable cylinders.	1	0.2	\$7.50
<b>APBP-4</b>	Cylinder pivot mounting bracket with pivot pin used to mount 1-1/4 inch bore NITRA pneumatic stainless steel round body, interchangeable, non-repairable cylinders.	1	0.1	\$9.50
<b>ARC-716-20</b>	Cylinder rod clevis and hex nut, 7/16-20 thread, for use with 1-1/4 and 1-1/2 inch bore NITRA pneumatic stainless steel round body, interchangeable, non-repairable cylinders.	1	0.1	\$8.75
<b>AN-34-16</b>	Cylinder mounting nut with 3/4-16 UNF-2B threads used to mount 1-1/4 and 1-1/2 inch bore NITRA pneumatic stainless steel round body, interchangeable, non-repairable cylinders.	1	0.1	\$1.25

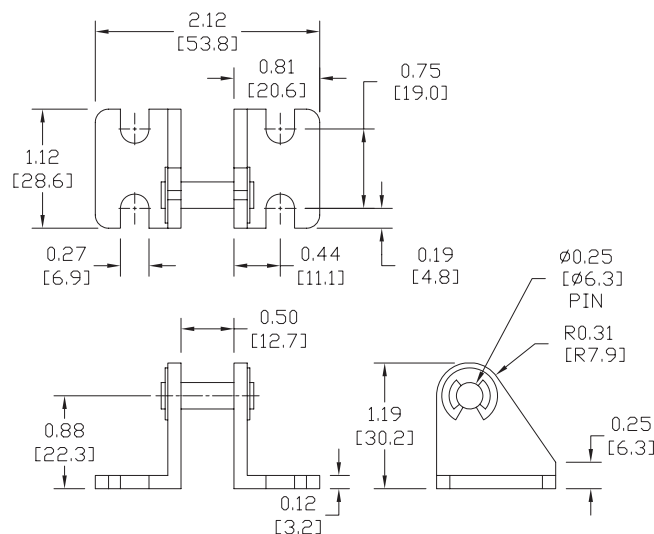
### Dimensions

inches [mm]

#### AMB-7



#### APBP-4





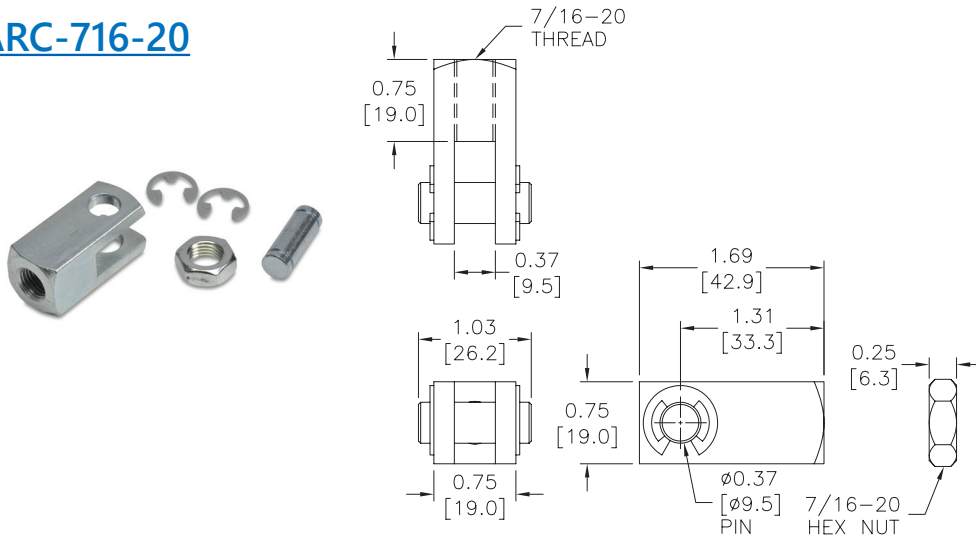
# A-Series Pneumatic Cylinders

## 1-1/4 inch Bore Accessories

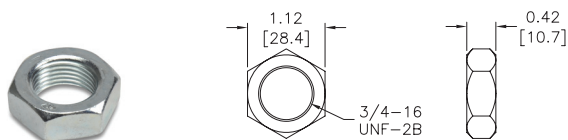
### Dimensions

inches [mm]

#### ARC-716-20



#### AN-34-16





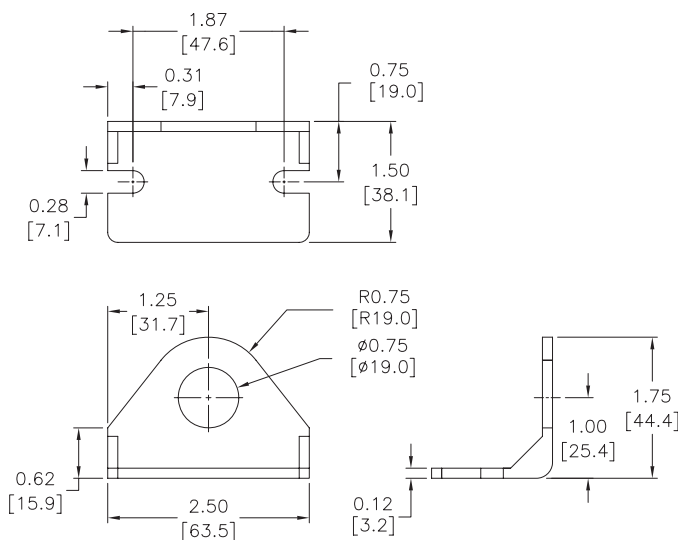
# A-Series Pneumatic Cylinders 1-1/2 inch Bore Accessories

A-Series Pneumatic Cylinder 1-1/2 inch Bore Accessories				
Part Number	Description	Pcs/Pkg	Wt (lb)	Price
<b>AMB-7</b>	Cylinder mounting bracket used to mount 1-1/4 and 1-1/2 inch bore NITRA pneumatic stainless steel round body, interchangeable, non-repairable cylinders.	1	0.2	\$7.50
<b>APB-3</b>	Cylinder pivot mounting bracket without pivot pin used to mount 1-1/2 bore NITRA pneumatic stainless steel round body, interchangeable, non-repairable cylinders.	1	0.2	\$9.50
<b>ARC-716-20</b>	Cylinder rod clevis and hex nut, 7/16-20 thread, for use with 1-1/4 and 1-1/2 inch bore NITRA pneumatic stainless steel round body, interchangeable, non-repairable cylinders.	1	0.1	\$8.75
<b>AN-34-16</b>	Cylinder mounting nut with 3/4-16 UNF-2B threads used to mount 1-1/4 and 1-1/2 inch bore NITRA pneumatic stainless steel round body, interchangeable, non-repairable cylinders.	1	0.1	\$1.25

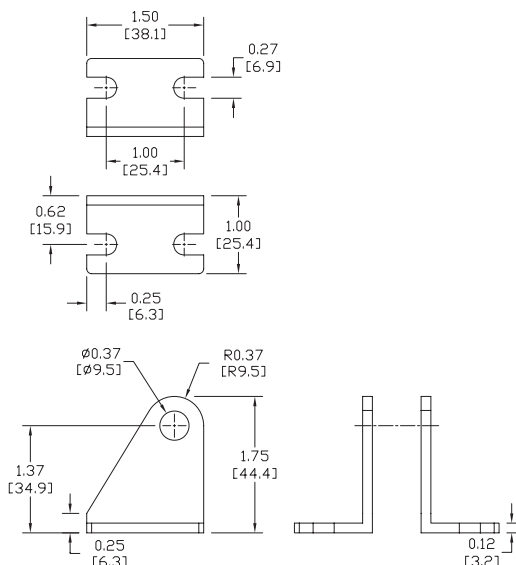
## Dimensions

inches [mm]

### AMB-7



### APB-3





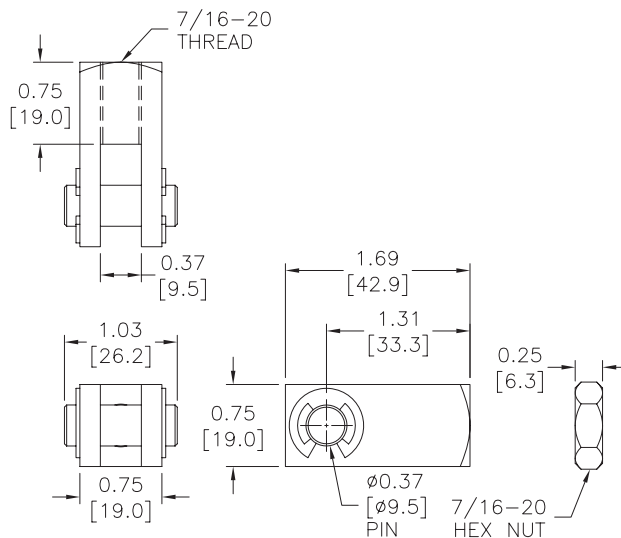
# A-Series Pneumatic Cylinders

## 1-1/2 inch Bore Accessories

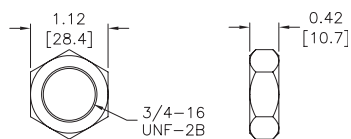
### Dimensions

inches [mm]

#### ARC-716-20



#### AN-34-16





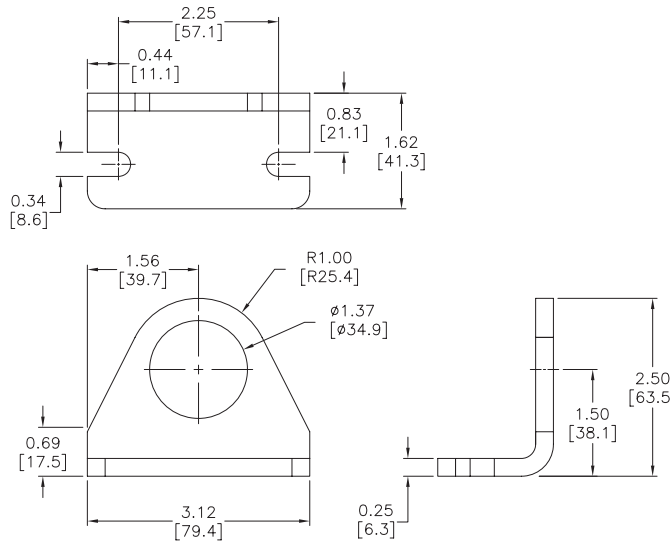
# A-Series Pneumatic Cylinders 2 inch Bore Accessories

A-Series Pneumatic Cylinder 2 inch Bore Accessories				
Part Number	Description	Pcs/Pkg	Wt (lb)	Price
<b>AMB-11</b>	Cylinder mounting bracket used to mount 2 inch bore NITRA pneumatic stainless steel round body, interchangeable, non-repairable cylinders.	1	0.5	\$16.00
<b>APBP-5</b>	Cylinder pivot mounting bracket with pivot pin used to mount 2 inch bore NITRA pneumatic stainless steel round body, interchangeable, non-repairable cylinders.	1	0.4	\$18.50
<b>ARC-12-20</b>	Cylinder rod clevis and hex nut, 1/2-20 thread, for use with 2 inch bore NITRA pneumatic stainless steel round body, interchangeable, non-repairable cylinders.	1	0.2	\$7.75
<b>AN-114-12</b>	Cylinder mounting nut with 1-1/4-12 UNF-2B threads used to mount 2 inch bore NITRA pneumatic stainless steel round body, interchangeable, non-repairable cylinders.	1	0.3	\$7.00

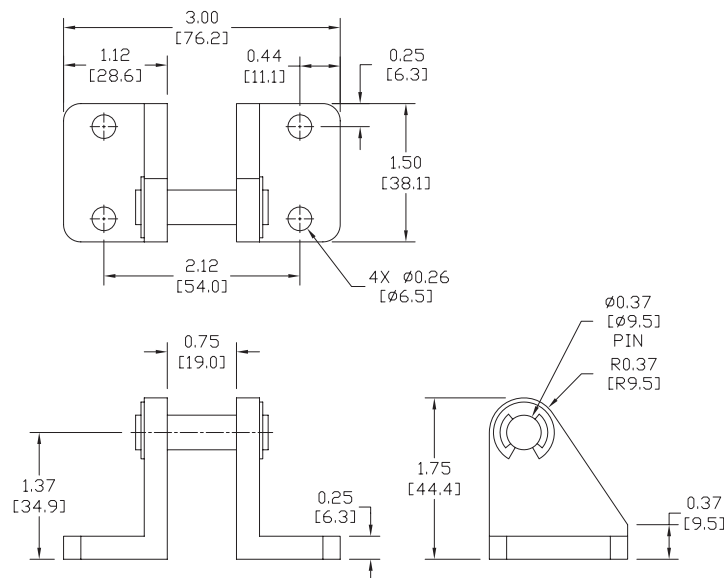
## Dimensions

inches [mm]

### AMB-11



### APBP-5





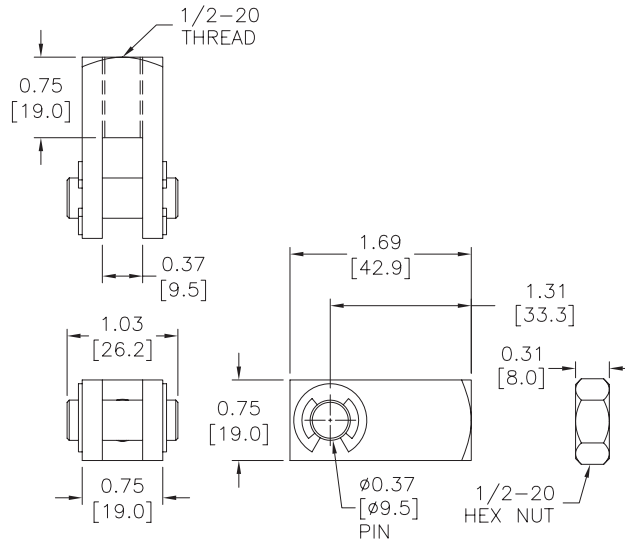
# A-Series Pneumatic Cylinders

## 2 inch Bore Accessories

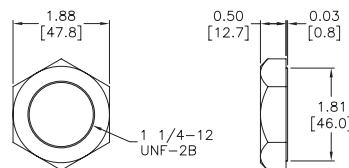
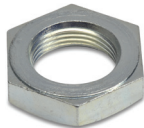
### Dimensions

inches [mm]

#### ARC-12-20



#### AN-114-12







# CPS Series Cylinder Position Switches

Position Switch Cross Reference Chart			
NITRA Switch Type	Cylinder Brand (may fit some of these cylinders)	Photo Example	Groove Illustration
CPS CPSF	NITRA A-Series NITRA D-Series NITRA F-Series		
CPS9C	DE-STA-CO Robohand SMC Compact Air Bimba Fabco		
CPS9D	NITRA L-Series Fabco Numatics Rotomation		
CPS9E	NITRA L-Series Fabco Numatics Rotomation		
CPS9F	NITRA G-Series Fabco Festo Numatics Rotomation		
CPS9H	NITRA E-Series NITRA H-Series		
CPS9M	Norgren		
CPS9Q	NITRA L-Series NITRA G-Series Parker Fabco Festo Numatics Rotomation		