



# 1/8" NPT Aluminum Manifolds

**MRA-4BA****MRA-4BA-180**

## NITRA aluminum manifolds

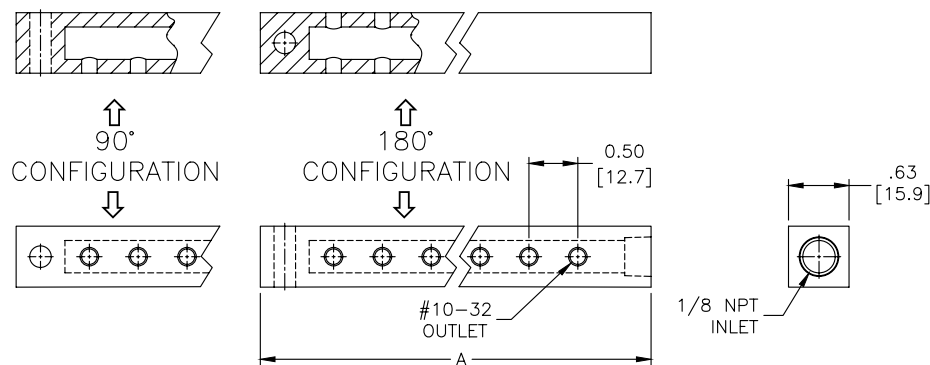
- Black anodized finish
- Maximum input pressure of 1000 psi
- Made in the USA



NITRA 1/8" NPT Aluminum Manifolds					
Part No.	Description	A	Parts Per Pkg	Weight (lbs)	Price
<b><u>MRA-4BA</u></b>	NITRA pneumatic manifold, aluminum, rectangular, (1) 1/8 inch female NPT inlet port(s), 4 stations, (1) #10-32 female threaded outlet port(s) per station, standard hole spacing.	3.0 [76.2]	1	0.1	\$15.00
<b><u>MRA-4BA-180</u></b>	NITRA pneumatic manifold, aluminum, rectangular, (1) 1/8 inch female NPT inlet port(s), 4 stations, (2) #10-32 female threaded outlet port(s) per station, 180-degree orientation, standard hole spacing.	3.0 [76.2]	1	0.1	\$19.00
<b><u>MRA-6BA</u></b>	NITRA pneumatic manifold, aluminum, rectangular, (1) 1/8 inch female NPT inlet port(s), 6 stations, (1) #10-32 female threaded outlet port(s) per station, standard hole spacing.	4.0 [101.6]	1	0.1	\$16.00
<b><u>MRA-6BA-180</u></b>	NITRA pneumatic manifold, aluminum, rectangular, (1) 1/8 inch female NPT inlet port(s), 6 stations, (2) #10-32 female threaded outlet port(s) per station, 180-degree orientation, standard hole spacing.	4.0 [101.6]	1	0.1	\$21.00
<b><u>MRA-8BA</u></b>	NITRA pneumatic manifold, aluminum, rectangular, (1) 1/8 inch female NPT inlet port(s), 8 stations, (1) #10-32 female threaded outlet port(s) per station, standard hole spacing.	5.0 [127.0]	1	0.2	\$18.00
<b><u>MRA-8BA-180</u></b>	NITRA pneumatic manifold, aluminum, rectangular, (1) 1/8 inch female NPT inlet port(s), 8 stations, (2) #10-32 female threaded outlet port(s) per station, 180-degree orientation, standard hole spacing.	5.0 [127.0]	1	0.2	\$21.50
<b><u>MRA-10BA</u></b>	NITRA pneumatic manifold, aluminum, rectangular, (1) 1/8 inch female NPT inlet port(s), 10 stations, (1) #10-32 female threaded outlet port(s) per station, standard hole spacing.	6.0 [152.4]	1	0.2	\$23.50
<b><u>MRA-10BA-180</u></b>	NITRA pneumatic manifold, aluminum, rectangular, (1) 1/8 inch female NPT inlet port(s), 10 stations, (2) #10-32 female threaded outlet port(s) per station, 180-degree orientation, standard hole spacing.	6.0 [152.4]	1	0.2	\$30.00

## Dimensions

inches [mm]



See our website [www.AutomationDirect.com](http://www.AutomationDirect.com) for complete Engineering drawings.



# 1/4" NPT Aluminum Manifolds

**MRA-2CB****MRA-2CB-90****MRA-2CB-W**

## NITRA aluminum manifolds

- Black anodized finish
- Maximum input pressure of 1000 psi
- Made in the USA

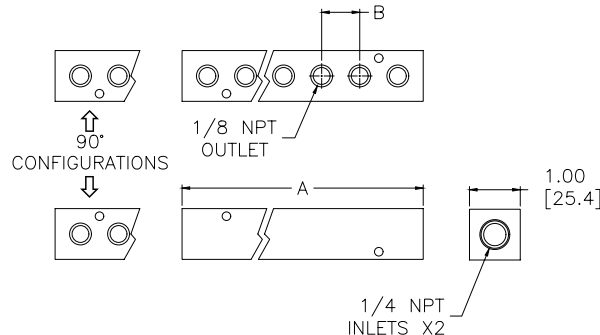


## NITRA 1/4" NPT Aluminum Manifolds

Part No.	Description	A	B	Parts Per Pkg	Weight (lbs)	Price
<b>MRA-2CB</b>	NITRA pneumatic manifold, aluminum, rectangular, (2) 1/4 inch female NPT inlet port(s), 2 stations, (1) 1/8 inch female NPT outlet port(s) per station, standard hole spacing.	1.75 [44.5]	0.75 [19.1]	1	0.2	\$18.50
<b>MRA-2CB-90</b>	NITRA pneumatic manifold, aluminum, rectangular, (2) 1/4 inch female NPT inlet port(s), 2 stations, (2) 1/8 inch female NPT outlet port(s) per station, 90-degree orientation, standard hole spacing.	1.75 [44.5]	0.75 [19.1]	1	0.1	\$29.00
<b>MRA-2CB-W</b>	NITRA pneumatic manifold, aluminum, rectangular, (2) 1/4 inch female NPT inlet port(s), 2 stations, (1) 1/8 inch female NPT outlet port(s) per station, wide hole spacing.	3.25 [82.6]	1.50 [38.1]	1	0.3	\$21.50
<b>MRA-3CB</b>	NITRA pneumatic manifold, aluminum, rectangular, (2) 1/4 inch female NPT inlet port(s), 3 stations, (1) 1/8 inch female NPT outlet port(s) per station, standard hole spacing.	2.50 [63.5]	0.75 [19.1]	1	0.2	\$19.50
<b>MRA-3CB-90</b>	NITRA pneumatic manifold, aluminum, rectangular, (2) 1/4 inch female NPT inlet port(s), 3 stations, (2) 1/8 inch female NPT outlet port(s) per station, 90-degree orientation, standard hole spacing.	2.50 [63.5]	0.75 [19.1]	1	0.2	\$30.50
<b>MRA-3CB-W</b>	NITRA pneumatic manifold, aluminum, rectangular, (2) 1/4 inch female NPT inlet port(s), 3 stations, (1) 1/8 inch female NPT outlet port(s) per station, wide hole spacing.	4.75 [120.7]	1.50 [38.1]	1	0.4	\$24.00
<b>MRA-4CB</b>	NITRA pneumatic manifold, aluminum, rectangular, (2) 1/4 inch female NPT inlet port(s), 4 stations, (1) 1/8 inch female NPT outlet port(s) per station, standard hole spacing.	3.25 [82.6]	0.75 [19.1]	1	0.3	\$22.00
<b>MRA-4CB-90</b>	NITRA pneumatic manifold, aluminum, rectangular, (2) 1/4 inch female NPT inlet port(s), 4 stations, (2) 1/8 inch female NPT outlet port(s) per station, 90-degree orientation, standard hole spacing.	3.25 [82.6]	0.75 [19.1]	1	0.3	\$33.00
<b>MRA-4CB-W</b>	NITRA pneumatic manifold, aluminum, rectangular, (2) 1/4 inch female NPT inlet port(s), 4 stations, (1) 1/8 inch female NPT outlet port(s) per station, wide hole spacing.	6.25 [158.8]	1.50 [38.1]	1	0.5	\$25.50
<b>MRA-5CB</b>	NITRA pneumatic manifold, aluminum, rectangular, (2) 1/4 inch female NPT inlet port(s), 5 stations, (1) 1/8 inch female NPT outlet port(s) per station, standard hole spacing.	4.00 [101.6]	0.75 [19.1]	1	0.3	\$24.00
<b>MRA-5CB-90</b>	NITRA pneumatic manifold, aluminum, rectangular, (2) 1/4 inch female NPT inlet port(s), 5 stations, (2) 1/8 inch female NPT outlet port(s) per station, 90-degree orientation, standard hole spacing.	4.00 [101.6]	0.75 [19.1]	1	0.3	\$35.50
<b>MRA-5CB-W</b>	NITRA pneumatic manifold, aluminum, rectangular, (2) 1/4 inch female NPT inlet port(s), 5 stations, (1) 1/8 inch female NPT outlet port(s) per station, wide hole spacing.	7.75 [196.9]	1.50 [38.1]	1	0.6	\$26.50
<b>MRA-6CB</b>	NITRA pneumatic manifold, aluminum, rectangular, (2) 1/4 inch female NPT inlet port(s), 6 stations, (1) 1/8 inch female NPT outlet port(s) per station, standard hole spacing.	4.75 [120.7]	0.75 [19.1]	1	0.4	\$25.50
<b>MRA-6CB-90</b>	NITRA pneumatic manifold, aluminum, rectangular, (2) 1/4 inch female NPT inlet port(s), 6 stations, (2) 1/8 inch female NPT outlet port(s) per station, 90-degree orientation, standard hole spacing.	4.75 [120.7]	0.75 [19.1]	1	0.4	\$38.00
<b>MRA-6CB-W</b>	NITRA pneumatic manifold, aluminum, rectangular, (2) 1/4 inch female NPT inlet port(s), 6 stations, (1) 1/8 inch female NPT outlet port(s) per station, wide hole spacing.	9.25 [235.0]	1.50 [38.1]	1	0.7	\$27.50
<b>MRA-7CB</b>	NITRA pneumatic manifold, aluminum, rectangular, (2) 1/4 inch female NPT inlet port(s), 7 stations, (1) 1/8 inch female NPT outlet port(s) per station, standard hole spacing.	5.50 [139.0]	0.75 [19.1]	1	0.5	\$26.50
<b>MRA-8CB</b>	NITRA pneumatic manifold, aluminum, rectangular, (2) 1/4 inch female NPT inlet port(s), 8 stations, (1) 1/8 inch female NPT outlet port(s) per station, standard hole spacing.	6.25 [158.8]	0.75 [19.1]	1	0.5	\$27.50
<b>MRA-8CB-90</b>	NITRA pneumatic manifold, aluminum, rectangular, (2) 1/4 inch female NPT inlet port(s), 8 stations, (2) 1/8 inch female NPT outlet port(s) per station, 90-degree orientation, standard hole spacing.	6.25 [158.8]	0.75 [19.1]	1	0.5	\$44.00
<b>MRA-8CB-W</b>	NITRA pneumatic manifold, aluminum, rectangular, (2) 1/4 inch female NPT inlet port(s), 8 stations, (1) 1/8 inch female NPT outlet port(s) per station, wide hole spacing.	12.25 [311.2]	1.50 [38.1]	1	1.0	\$31.00
<b>MRA-10CB</b>	NITRA pneumatic manifold, aluminum, rectangular, (2) 1/4 inch female NPT inlet port(s), 10 stations, (1) 1/8 inch female NPT outlet port(s) per station, standard hole spacing.	7.75 [196.9]	0.75 [19.1]	1	0.6	\$28.50

## Dimensions

inches [mm]



See our website [www.AutomationDirect.com](http://www.AutomationDirect.com) for complete Engineering drawings.



# 3/8" NPT Aluminum Manifolds

**MRA-2DC****MRA-2DC-90****MRA-2DC-W**

## NITRA aluminum manifolds

- Black anodized finish
- Maximum input pressure of 1000 psi
- Made in the USA

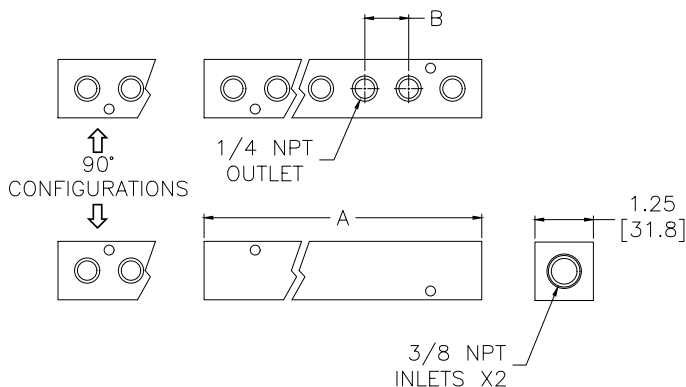


## NITRA 3/8" NPT Aluminum Manifolds

Part No.	Description	A	B	Parts Per Pkg	Weight (lbs)	Price
<b>MRA-2DC</b>	NITRA pneumatic manifold, aluminum, rectangular, (2) 3/8 inch female NPT inlet port(s), 2 stations, (1) 1/4 inch female NPT outlet port(s) per station, standard hole spacing.	2.13 [54.1]	0.88 [22.4]	1	0.2	\$18.50
<b>MRA-2DC-90</b>	NITRA pneumatic manifold, aluminum, rectangular, (2) 3/8 inch female NPT inlet port(s), 2 stations, (2) 1/4 inch female NPT outlet port(s) per station, 90-degree orientation, standard hole spacing.	2.13 [54.1]	0.88 [22.4]	1	0.3	\$29.00
<b>MRA-2DC-W</b>	NITRA pneumatic manifold, aluminum, rectangular, (2) 3/8 inch female NPT inlet port(s), 2 stations, (1) 1/4 inch female NPT outlet port(s) per station, wide hole spacing.	3.25 [82.1]	1.50 [38.1]	1	0.4	\$22.00
<b>MRA-3DC</b>	NITRA pneumatic manifold, aluminum, rectangular, (2) 3/8 inch female NPT inlet port(s), 3 stations, (1) 1/4 inch female NPT outlet port(s) per station, standard hole spacing.	3.00 [76.2]	0.88 [22.4]	1	0.3	\$19.50
<b>MRA-3DC-90</b>	NITRA pneumatic manifold, aluminum, rectangular, (2) 3/8 inch female NPT inlet port(s), 3 stations, (2) 1/4 inch female NPT outlet port(s) per station, 90-degree orientation, standard hole spacing.	3.00 [76.2]	0.88 [22.4]	1	0.3	\$30.50
<b>MRA-3DC-W</b>	NITRA pneumatic manifold, aluminum, rectangular, (2) 3/8 inch female NPT inlet port(s), 3 stations, (1) 1/4 inch female NPT outlet port(s) per station, wide hole spacing.	4.75 [120.7]	1.50 [38.1]	1	0.6	\$24.00
<b>MRA-4DC</b>	NITRA pneumatic manifold, aluminum, rectangular, (2) 3/8 inch female NPT inlet port(s), 4 stations, (1) 1/4 inch female NPT outlet port(s) per station, standard hole spacing.	3.88 [98.6]	0.88 [22.4]	1	0.5	\$22.00
<b>MRA-4DC-90</b>	NITRA pneumatic manifold, aluminum, rectangular, (2) 3/8 inch female NPT inlet port(s), 4 stations, (2) 1/4 inch female NPT outlet port(s) per station, 90-degree orientation, standard hole spacing.	3.88 [98.6]	0.88 [22.4]	1	0.4	\$33.00
<b>MRA-4DC-W</b>	NITRA pneumatic manifold, aluminum, rectangular, (2) 3/8 inch female NPT inlet port(s), 4 stations, (1) 1/4 inch female NPT outlet port(s) per station, wide hole spacing.	6.25 [158.8]	1.50 [38.1]	1	0.8	\$26.00
<b>MRA-5DC</b>	NITRA pneumatic manifold, aluminum, rectangular, (2) 3/8 inch female NPT inlet port(s), 5 stations, (1) 1/4 inch female NPT outlet port(s) per station, standard hole spacing.	4.75 [120.7]	0.88 [22.4]	1	0.6	\$24.00
<b>MRA-5DC-90</b>	NITRA pneumatic manifold, aluminum, rectangular, (2) 3/8 inch female NPT inlet port(s), 5 stations, (2) 1/4 inch female NPT outlet port(s) per station, 90-degree orientation, standard hole spacing.	4.75 [120.7]	0.88 [22.4]	1	0.6	\$35.50
<b>MRA-5DC-W</b>	NITRA pneumatic manifold, aluminum, rectangular, (2) 3/8 inch female NPT inlet port(s), 5 stations, (1) 1/4 inch female NPT outlet port(s) per station, wide hole spacing.	7.75 [196.9]	1.50 [38.1]	1	1.0	\$27.50
<b>MRA-6DC</b>	NITRA pneumatic manifold, aluminum, rectangular, (2) 3/8 inch female NPT inlet port(s), 6 stations, (1) 1/4 inch female NPT outlet port(s) per station, standard hole spacing.	5.63 [143.0]	0.88 [22.4]	1	0.7	\$25.50
<b>MRA-6DC-90</b>	NITRA pneumatic manifold, aluminum, rectangular, (2) 3/8 inch female NPT inlet port(s), 6 stations, (2) 1/4 inch female NPT outlet port(s) per station, 90-degree orientation, standard hole spacing.	5.63 [143.0]	0.88 [22.4]	1	0.7	\$38.00
<b>MRA-6DC-W</b>	NITRA pneumatic manifold, aluminum, rectangular, (2) 3/8 inch female NPT inlet port(s), 6 stations, (1) 1/4 inch female NPT outlet port(s) per station, wide hole spacing.	9.25 [235.0]	1.50 [38.1]	1	1.1	\$30.00
<b>MRA-7DC</b>	NITRA pneumatic manifold, aluminum, rectangular, (2) 3/8 inch female NPT inlet port(s), 7 stations, (1) 1/4 inch female NPT outlet port(s) per station, standard hole spacing.	6.50 [165.1]	0.88 [22.4]	1	0.8	\$26.50
<b>MRA-8DC</b>	NITRA pneumatic manifold, aluminum, rectangular, (2) 3/8 inch female NPT inlet port(s), 8 stations, (1) 1/4 inch female NPT outlet port(s) per station, standard hole spacing.	7.38 [187.5]	0.88 [22.4]	1	0.9	\$27.50
<b>MRA-8DC-90</b>	NITRA pneumatic manifold, aluminum, rectangular, (2) 3/8 inch female NPT inlet port(s), 8 stations, (2) 1/4 inch female NPT outlet port(s) per station, 90-degree orientation, standard hole spacing.	7.38 [187.5]	0.88 [22.4]	1	0.9	\$44.00
<b>MRA-8DC-W</b>	NITRA pneumatic manifold, aluminum, rectangular, (2) 3/8 inch female NPT inlet port(s), 8 stations, (1) 1/4 inch female NPT outlet port(s) per station, wide hole spacing.	12.25 [311.2]	1.50 [38.1]	1	1.5	\$33.50
<b>MRA-10DC</b>	NITRA pneumatic manifold, aluminum, rectangular, (2) 3/8 inch female NPT inlet port(s), 10 stations, (1) 1/4 inch female NPT outlet port(s) per station, standard hole spacing.	9.13 [231.9]	0.88 [22.4]	1	1.1	\$30.00
<b>MRA-10DC-90</b>	NITRA pneumatic manifold, aluminum, rectangular, (2) 3/8 inch female NPT inlet port(s), 10 stations, (2) 1/4 inch female NPT outlet port(s) per station, 90-degree orientation, standard hole spacing.	9.13 [231.9]	0.88 [22.4]	1	0.9	\$47.50
<b>MRA-10DC-W</b>	NITRA pneumatic manifold, aluminum, rectangular, (2) 3/8 inch female NPT inlet port(s), 10 stations, (1) 1/4 inch female NPT outlet port(s) per station, wide hole spacing.	15.25 [387.4]	1.50 [38.1]	1	1.9	\$37.00

## Dimensions

inches [mm]



See our website [www.AutomationDirect.com](http://www.AutomationDirect.com) for complete Engineering drawings.



# 1/2" NPT Aluminum Manifolds

**MRA-2ED****MRA-2ED-90****MRA-2ED-W**

## NITRA aluminum manifolds

- Black anodized finish
- Maximum input pressure of 1000 psi
- Made in the USA

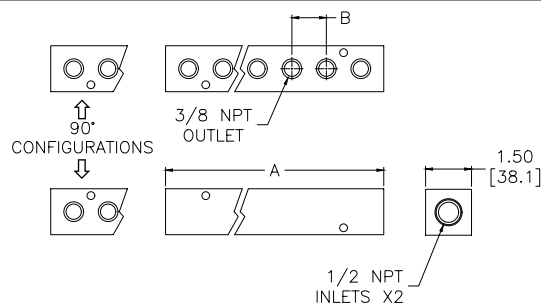


## NITRA 1/2" NPT Aluminum Manifolds

Part No.	Description	A	B	Parts Per Pkg	Weight (lbs)	Price
<b>MRA-2ED</b>	NITRA pneumatic manifold, aluminum, rectangular, (2) 1/2 inch female NPT inlet port(s), 2 stations, (1) 3/8 inch female NPT outlet port(s) per station, standard hole spacing.	2.75 [69.9]	1.00 [25.4]	1	0.4	\$31.50
<b>MRA-2ED-90</b>	NITRA pneumatic manifold, aluminum, rectangular, (2) 1/2 inch female NPT inlet port(s), 2 stations, (2) 3/8 inch female NPT outlet port(s) per station, 90-degree orientation, standard hole spacing.	2.75 [69.9]	1.00 [25.4]	1	0.4	\$42.00
<b>MRA-2ED-W</b>	NITRA pneumatic manifold, aluminum, rectangular, (2) 1/2 inch female NPT inlet port(s), 2 stations, (1) 3/8 inch female NPT outlet port(s) per station, wide hole spacing.	3.25 [82.6]	1.50 [38.1]	1	0.6	\$32.50
<b>MRA-3ED</b>	NITRA pneumatic manifold, aluminum, rectangular, (2) 1/2 inch female NPT inlet port(s), 3 stations, (1) 3/8 inch female NPT outlet port(s) per station, standard hole spacing.	3.75 [95.3]	1.00 [25.4]	1	0.6	\$33.50
<b>MRA-3ED-90</b>	NITRA pneumatic manifold, aluminum, rectangular, (2) 1/2 inch female NPT inlet port(s), 3 stations, (2) 3/8 inch female NPT outlet port(s) per station, 90-degree orientation, standard hole spacing.	3.75 [95.3]	1.00 [25.4]	1	0.6	\$43.00
<b>MRA-3ED-W</b>	NITRA pneumatic manifold, aluminum, rectangular, (2) 1/2 inch female NPT inlet port(s), 3 stations, (1) 3/8 inch female NPT outlet port(s) per station, wide hole spacing.	4.75 [120.7]	1.50 [38.1]	1	0.8	\$35.00
<b>MRA-4ED</b>	NITRA pneumatic manifold, aluminum, rectangular, (2) 1/2 inch female NPT inlet port(s), 4 stations, (1) 3/8 inch female NPT outlet port(s) per station, standard hole spacing.	4.75 [120.7]	1.00 [25.4]	1	0.8	\$35.50
<b>MRA-4ED-90</b>	NITRA pneumatic manifold, aluminum, rectangular, (2) 1/2 inch female NPT inlet port(s), 4 stations, (2) 3/8 inch female NPT outlet port(s) per station, 90-degree orientation, standard hole spacing.	4.75 [120.7]	1.00 [25.4]	1	0.7	\$44.00
<b>MRA-4ED-W</b>	NITRA pneumatic manifold, aluminum, rectangular, (2) 1/2 inch female NPT inlet port(s), 4 stations, (1) 3/8 inch female NPT outlet port(s) per station, wide hole spacing.	6.25 [158.8]	1.50 [38.1]	1	1.1	\$37.50
<b>MRA-5ED</b>	NITRA pneumatic manifold, aluminum, rectangular, (2) 1/2 inch female NPT inlet port(s), 5 stations, (1) 3/8 inch female NPT outlet port(s) per station, standard hole spacing.	5.75 [146.1]	1.00 [25.4]	1	1.0	\$36.50
<b>MRA-5ED-90</b>	NITRA pneumatic manifold, aluminum, rectangular, (2) 1/2 inch female NPT inlet port(s), 5 stations, (2) 3/8 inch female NPT outlet port(s) per station, 90-degree orientation, standard hole spacing.	5.75 [146.1]	1.00 [25.4]	1	0.9	\$45.00
<b>MRA-5ED-W</b>	NITRA pneumatic manifold, aluminum, rectangular, (2) 1/2 inch female NPT inlet port(s), 5 stations, (1) 3/8 inch female NPT outlet port(s) per station, wide hole spacing.	7.75 [196.9]	1.50 [38.1]	1	1.3	\$40.00
<b>MRA-6ED</b>	NITRA pneumatic manifold, aluminum, rectangular, (2) 1/2 inch female NPT inlet port(s), 6 stations, (1) 3/8 inch female NPT outlet port(s) per station, standard hole spacing.	6.75 [171.5]	1.00 [25.4]	1	1.1	\$38.50
<b>MRA-6ED-90</b>	NITRA pneumatic manifold, aluminum, rectangular, (2) 1/2 inch female NPT inlet port(s), 6 stations, (2) 3/8 inch female NPT outlet port(s) per station, 90-degree orientation, standard hole spacing.	6.75 [171.5]	1.00 [25.4]	1	1.1	\$45.50
<b>MRA-6ED-W</b>	NITRA pneumatic manifold, aluminum, rectangular, (2) 1/2 inch female NPT inlet port(s), 6 stations, (1) 3/8 inch female NPT outlet port(s) per station, wide hole spacing.	9.25 [235.0]	1.50 [38.1]	1	1.6	\$42.00
<b>MRA-7ED</b>	NITRA pneumatic manifold, aluminum, rectangular, (2) 1/2 inch female NPT inlet port(s), 7 stations, (1) 3/8 inch female NPT outlet port(s) per station, standard hole spacing.	7.75 [196.9]	1.00 [25.4]	1	1.3	\$45.50
<b>MRA-8ED</b>	NITRA pneumatic manifold, aluminum, rectangular, (2) 1/2 inch female NPT inlet port(s), 8 stations, (1) 3/8 inch female NPT outlet port(s) per station, standard hole spacing.	8.75 [222.3]	1.00 [25.4]	1	1.5	\$52.00
<b>MRA-8ED-90</b>	NITRA pneumatic manifold, aluminum, rectangular, (2) 1/2 inch female NPT inlet port(s), 8 stations, (2) 3/8 inch female NPT outlet port(s) per station, 90-degree orientation, standard hole spacing.	8.75 [222.3]	1.00 [25.4]	1	1.4	\$69.00
<b>MRA-8ED-W</b>	NITRA pneumatic manifold, aluminum, rectangular, (2) 1/2 inch female NPT inlet port(s), 8 stations, (1) 3/8 inch female NPT outlet port(s) per station, wide hole spacing.	12.25 [311.2]	1.50 [38.1]	1	2.1	\$58.00
<b>MRA-9ED</b>	NITRA pneumatic manifold, aluminum, rectangular, (2) 1/2 inch female NPT inlet port(s), 9 stations, (1) 3/8 inch female NPT outlet port(s) per station, standard hole spacing.	9.75 [247.7]	1.00 [25.4]	1	1.6	\$49.00
<b>MRA-10ED</b>	NITRA pneumatic manifold, aluminum, rectangular, (2) 1/2 inch female NPT inlet port(s), 10 stations, (1) 3/8 inch female NPT outlet port(s) per station, standard hole spacing.	10.75 [273.1]	1.00 [25.4]	1	1.8	\$54.00
<b>MRA-10ED-90</b>	NITRA pneumatic manifold, aluminum, rectangular, (2) 1/2 inch female NPT inlet port(s), 10 stations, (2) 3/8 inch female NPT outlet port(s) per station, 90-degree orientation, standard hole spacing.	10.75 [273.1]	1.00 [25.4]	1	1.7	\$72.00

## Dimensions

inches [mm]



See our website [www.AutomationDirect.com](http://www.AutomationDirect.com) for complete Engineering drawings.



# 3/4" NPT Aluminum Manifolds

**MRA-2FD****NITRA** aluminum manifolds

- Black anodized finish
- Maximum input pressure of 1000 psi
- Made in the USA

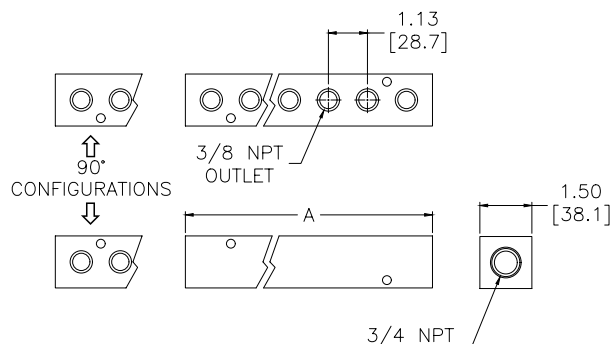


## NITRA 3/4" NPT Aluminum Manifolds

Part No.	Description	A	Parts Per Pkg	Weight (lbs)	Price
<b><u>MRA-2FD</u></b>	NITRA pneumatic manifold, aluminum, rectangular, (2) 3/4 inch female NPT inlet port(s), 2 stations, (1) 3/8 inch female NPT outlet port(s) per station, standard hole spacing.	4.63 [117.6]	1	0.8	\$42.00
<b><u>MRA-3FD</u></b>	NITRA pneumatic manifold, aluminum, rectangular, (2) 3/4 inch female NPT inlet port(s), 3 stations, (1) 3/8 inch female NPT outlet port(s) per station, standard hole spacing.	5.75 [146.1]	1	0.9	\$44.50
<b><u>MRA-4FD</u></b>	NITRA pneumatic manifold, aluminum, rectangular, (2) 3/4 inch female NPT inlet port(s), 4 stations, (1) 3/8 inch female NPT outlet port(s) per station, standard hole spacing.	6.88 [174.8]	1	1.1	\$46.50
<b><u>MRA-5FD</u></b>	NITRA pneumatic manifold, aluminum, rectangular, (2) 3/4 inch female NPT inlet port(s), 5 stations, (1) 3/8 inch female NPT outlet port(s) per station, standard hole spacing.	8.00 [203.2]	1	1.3	\$48.50
<b><u>MRA-6FD</u></b>	NITRA pneumatic manifold, aluminum, rectangular, (2) 3/4 inch female NPT inlet port(s), 6 stations, (1) 3/8 inch female NPT outlet port(s) per station, standard hole spacing.	9.13 [231.9]	1	1.5	\$51.00
<b><u>MRA-8FD</u></b>	NITRA pneumatic manifold, aluminum, rectangular, (2) 3/4 inch female NPT inlet port(s), 8 stations, (1) 3/8 inch female NPT outlet port(s) per station, standard hole spacing.	11.38 [289.1]	1	1.9	\$70.00
<b><u>MRA-10FD</u></b>	NITRA pneumatic manifold, aluminum, rectangular, (2) 3/4 inch female NPT inlet port(s), 10 stations, (1) 3/8 inch female NPT outlet port(s) per station, standard hole spacing.	13.63 [346.2]	1	2.2	\$72.00

## Dimensions

inches [mm]

See our website [www.AutomationDirect.com](http://www.AutomationDirect.com) for complete Engineering drawings.





# 1" NPT Aluminum Manifolds

**MRA-2GE****MRA-2GE-90**

## NITRA aluminum manifolds

- Plain finish
- Maximum input pressure of 1000 psi
- Made in the USA

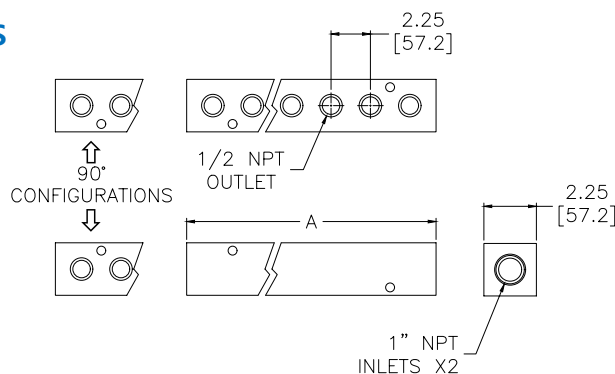


## NITRA 1" NPT Aluminum Manifolds

Part No.	Description	A	Parts Per Pkg	Weight (lbs)	Price
<b><u>MRA-2GE</u></b>	NITRA pneumatic manifold, aluminum, rectangular, (2) 1 inch female NPT inlet port(s), 2 stations, (1) 1/2 inch female NPT outlet port(s) per station, standard hole spacing.	5.25 [133.4]	1	2.0	\$70.00
<b><u>MRA-2GE-90</u></b>	NITRA pneumatic manifold, aluminum, rectangular, (2) 1 inch female NPT inlet port(s), 2 stations, (2) 1/2 inch female NPT outlet port(s) per station, 90-degree orientation, standard hole spacing.	5.25 [133.4]	1	1.9	\$79.00
<b><u>MRA-3GE</u></b>	NITRA pneumatic manifold, aluminum, rectangular, (2) 1 inch female NPT inlet port(s), 3 stations, (1) 1/2 inch female NPT outlet port(s) per station, standard hole spacing.	7.50 [190.5]	1	2.8	\$81.00
<b><u>MRA-3GE-90</u></b>	NITRA pneumatic manifold, aluminum, rectangular, (2) 1 inch female NPT inlet port(s), 3 stations, (2) 1/2 inch female NPT outlet port(s) per station, 90-degree orientation, standard hole spacing.	7.50 [190.5]	1	2.7	\$90.00
<b><u>MRA-4GE</u></b>	NITRA pneumatic manifold, aluminum, rectangular, (2) 1 inch female NPT inlet port(s), 4 stations, (1) 1/2 inch female NPT outlet port(s) per station, standard hole spacing.	9.75 [247.7]	1	3.7	\$91.00
<b><u>MRA-4GE-90</u></b>	NITRA pneumatic manifold, aluminum, rectangular, (2) 1 inch female NPT inlet port(s), 4 stations, (2) 1/2 inch female NPT outlet port(s) per station, 90-degree orientation, standard hole spacing.	9.75 [247.7]	1	3.6	\$103.00
<b><u>MRA-5GE</u></b>	NITRA pneumatic manifold, aluminum, rectangular, (2) 1 inch female NPT inlet port(s), 5 stations, (1) 1/2 inch female NPT outlet port(s) per station, standard hole spacing.	12.00 [304.8]	1	4.6	\$97.00
<b><u>MRA-5GE-90</u></b>	NITRA pneumatic manifold, aluminum, rectangular, (2) 1 inch female NPT inlet port(s), 5 stations, (2) 1/2 inch female NPT outlet port(s) per station, 90-degree orientation, standard hole spacing.	12.00 [304.8]	1	4.4	\$108.00
<b><u>MRA-6GE</u></b>	NITRA pneumatic manifold, aluminum, rectangular, (2) 1 inch female NPT inlet port(s), 6 stations, (1) 1/2 inch female NPT outlet port(s) per station, standard hole spacing.	14.25 [362.0]	1	5.4	\$104.00
<b><u>MRA-6GE-90</u></b>	NITRA pneumatic manifold, aluminum, rectangular, (2) 1 inch female NPT inlet port(s), 6 stations, (2) 1/2 inch female NPT outlet port(s) per station, 90-degree orientation, standard hole spacing.	14.25 [362.0]	1	5.3	\$120.00
<b><u>MRA-7GE</u></b>	NITRA pneumatic manifold, aluminum, rectangular, (2) 1 inch female NPT inlet port(s), 7 stations, (1) 1/2 inch female NPT outlet port(s) per station, standard hole spacing.	16.50 [419.1]	1	6.3	\$121.00
<b><u>MRA-7GE-90</u></b>	NITRA pneumatic manifold, aluminum, rectangular, (2) 1 inch female NPT inlet port(s), 7 stations, (2) 1/2 inch female NPT outlet port(s) per station, 90-degree orientation, standard hole spacing.	16.50 [419.0]	1	6.1	\$133.00
<b><u>MRA-8GE</u></b>	NITRA pneumatic manifold, aluminum, rectangular, (2) 1 inch female NPT inlet port(s), 8 stations, (1) 1/2 inch female NPT outlet port(s) per station, standard hole spacing.	18.75 [476.3]	1	7.2	\$138.00
<b><u>MRA-8GE-90</u></b>	NITRA pneumatic manifold, aluminum, rectangular, (2) 1 inch female NPT inlet port(s), 8 stations, (2) 1/2 inch female NPT outlet port(s) per station, 90-degree orientation, standard hole spacing.	18.75 [476.3]	1	6.9	\$154.00

## Dimensions

inches [mm]



See our website [www.AutomationDirect.com](http://www.AutomationDirect.com) for complete Engineering drawings.