

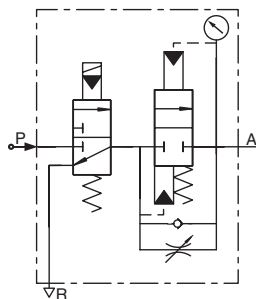


Pneumatic Air Preparation - ASD Series

Soft-Start/Dump Valves



ASD Series Valves



NITRA® pneumatic soft start/dump valves are available with 1/8", 1/4", 3/8" or 1/2" NPT female port sizes and 24VDC or 120VAC solenoid voltages to meet a broad range of pneumatic air supply applications. The three-way, two-position (3 threaded ports) design is used to gradually increase air pressure downstream when the solenoid is energized and to shut off upstream pressure and relieve downstream pressure when it is de-energized.

Provided with a mounting bracket for stand-alone applications, the modular design also enables easy field assembly with NITRA pneumatic filters, regulators and lubricators (using modular assembly brackets purchased separately).

Features

- 1/8", 1/4", 3/8" or 1/2" NPT ports
- 24 VDC or 120 VAC solenoid coils
- 11 mm DIN style wiring connector w/LED indication
- Modular design enables easy field assembly with other NITRA components
- Maximum pressure 130psi
- 2 year warranty



See www.AutomationDirect.com for a wide variety of fitting options

ASD Soft-Start/Dump Valve Series Specifications

Model	ASD-21-24D	ASD-21-120A	ASD-22-24D	ASD-22-120A	ASD-32-24D	ASD-32-120A	ASD-33-24D	ASD-33-120A	ASD-44-24D	ASD-44-120A
Price	\$83.00	\$83.00	\$83.00	\$83.00	\$91.00	\$91.00	\$91.00	\$91.00	\$151.00	\$143.00
Weight (lbs)	0.9	0.9	0.9	0.9	1.4	1.4	1.4	1.4	2.0	2.0
Fluid	Air									
Port Size (FNPT)	1/8"			1/4"				3/8"		1/2"
Exhaust Size			1/4"				3/8"			1/2"
Flow Coefficient (Cv)	7.0		7.5			12		15		24
Acting Type	Solenoid Operated, 3/2 Soft-Start									
Temperature	0 to 160°F (-18 to 71°C)									
Operating Pressure	35-130 psi, (0.24~0.90 MPa), (2.4~9.0 bar)									
Maximum Pressure	145 psi, (1.0 MPa), (10 bar)									
Proof Pressure	215 psi, (1.5 MPa), (15 bar)									
Power Connection	11 mm DIN									
Voltage	24 VDC	120 VAC	24 VDC	120 VAC	24 VDC	120 VAC	24 VDC	120 VAC	24 VDC	120 VAC
Voltage Range	-15% to +10%									
Insulation	B class									
Power Consumption	3.0 W	3.5 VA	3.0 W	3.5 VA	3.0 W	3.5 VA	3.0 W	3.5 VA	3.0 W	3.5 VA



Pneumatic Air Preparation - ASD Series Soft-Start/Dump Valves

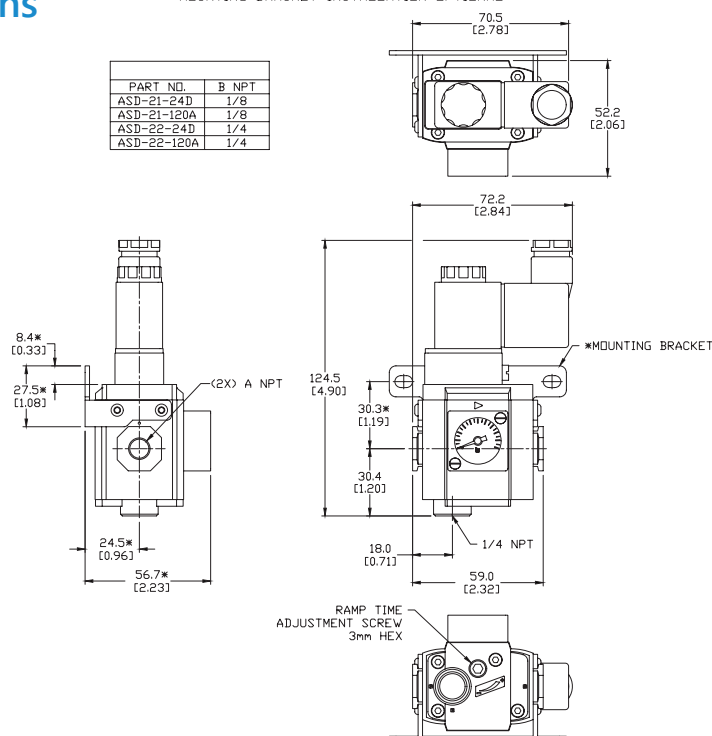
Dimensions

mm [inches]

ASD-2x

*MOUNTING BRACKET INSTALLATION OPTIONAL

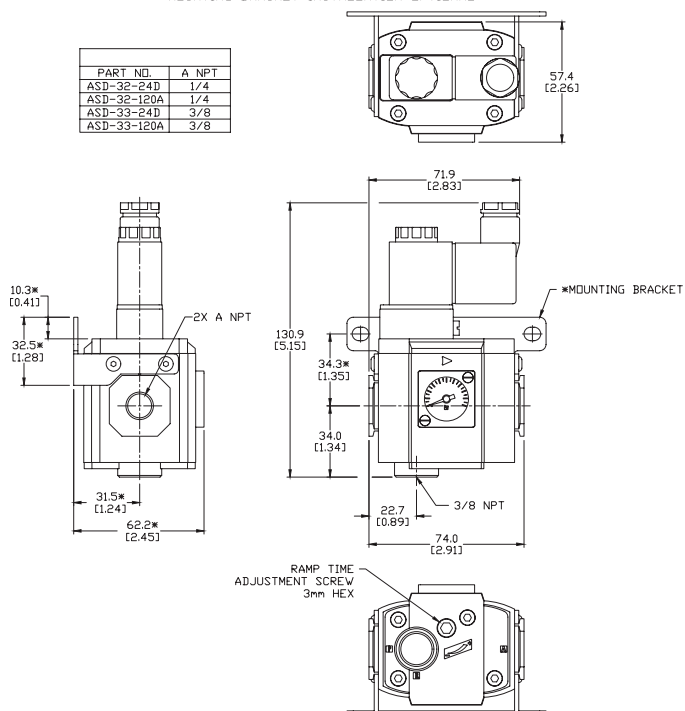
PART NO.	B NPT
ASD-21-24D	1/8
ASD-21-120A	1/8
ASD-22-24D	1/4
ASD-22-120A	1/4



ASD-3x

*MOUNTING BRACKET INSTALLATION OPTIONAL

PART NO.	A NPT
ASD-32-24D	1/4
ASD-32-120A	1/4
ASD-33-24D	3/8
ASD-33-120A	3/8



See our Web site www.AutomationDirect.com for complete Engineering drawings.



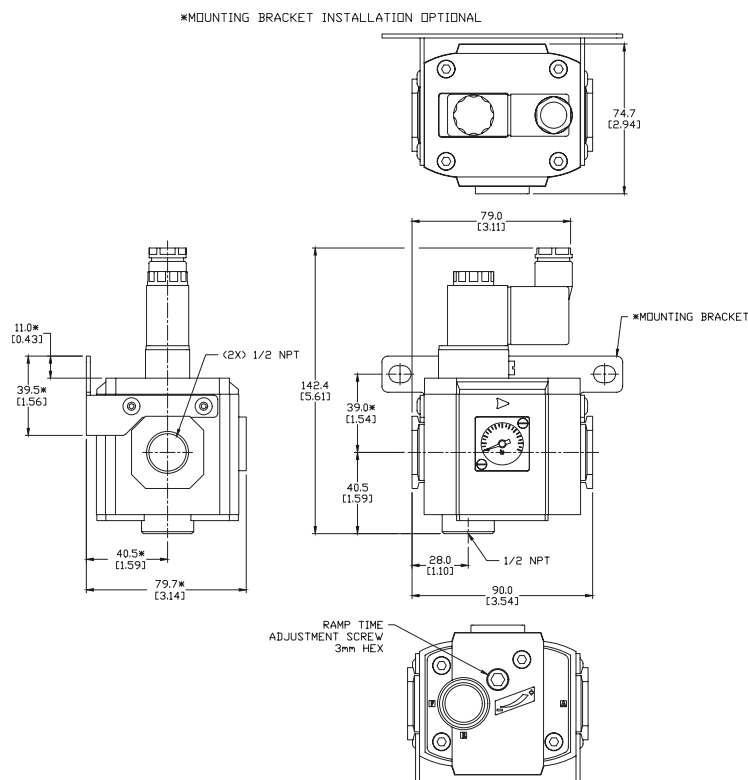
Pneumatic Air Preparation - ASD Series

Soft-Start/Dump Valves

Dimensions

mm [inches]

ASD-4x



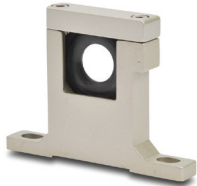
See our Web site www.AutomationDirect.com for complete Engineering drawings.



Pneumatic Air Preparation Accessories



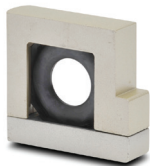
Part No. [ADB-21](#)



Part No. [AB-4T](#)



Part No. [AB-4L](#)



Part No. [AB-4U](#)

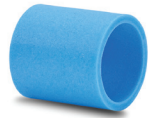
Pneumatic Air Preparation Accessories			
Part No.	Price	Description	Weight (lbs)
ADB-21	\$18.00	NITRA pneumatic distribution block, 1/8in female NPT inlet(s), (3) 1/8in female NPT outlet(s). For use with Ax-21 series air prep components.	0.1
ADB-22	\$18.00	NITRA pneumatic distribution block, 1/4in female NPT inlet(s), (3) 1/4in female NPT outlet(s). For use with Ax-22 series air prep components.	0.1
ADB-32	\$25.50	NITRA pneumatic distribution block, 1/4in female NPT inlet(s), (3) 1/4in female NPT outlet(s). For use with Ax-32 series air prep components.	0.2
ADB-33	\$25.50	NITRA pneumatic distribution block, 3/8in female NPT inlet(s), (3) 3/8in female NPT outlet(s). For use with Ax-33 series air prep components.	0.2
ADB-44	\$27.00	NITRA pneumatic distribution block, 1/2in female NPT inlet(s), (3) 1/2in female NPT outlet(s). For use with Ax-44 series air prep components.	0.4
AB-2T	\$16.50	NITRA modular T-bracket, for use with Ax-2 series air prep components.	0.2
AB-2L	\$16.50	NITRA modular L-bracket, for use with Ax-2 series air prep components.	0.2
AB-2U	\$16.50	NITRA modular U-bracket, for use with Ax-2 series air prep components.	0.1
AB-3T	\$18.00	NITRA modular T-bracket, for use with Ax-3 series air prep components.	0.3
AB-3L	\$18.00	NITRA modular L-bracket, for use with Ax-3 series air prep components.	0.3
AB-3U	\$18.00	NITRA modular U-bracket, for use with Ax-3 series air prep components.	0.2
AB-4T	\$22.00	NITRA modular T-bracket, for use with Ax-4 series air prep components.	0.5
AB-4L	\$22.00	NITRA modular L-bracket, for use with Ax-4 series air prep components.	0.5
AB-4U	\$22.00	NITRA modular U-bracket, for use with Ax-4 series air prep components.	0.4
AB-6T	\$32.00	NITRA modular T-bracket, for use with Ax-6 series air prep components.	1.3
AB-6L	\$30.00	NITRA modular L-bracket, for use with Ax-6 series air prep components.	1.2
AB-6U	\$28.50	NITRA modular U-bracket, for use with Ax-6 series air prep components.	0.8



Pneumatic Air Preparation Accessories



Part No. [AFE2-43](#)



Part No. [AFE2-41](#)



Part No. [AFE-24](#)



Part No. [AFE-35](#)

Pneumatic Air Preparation Accessories			
Part No.	Price	Description	Weight (lbs)
NITRA Gen 2 Particulate Filters			
AFE2-23	\$1.50	NITRA particulate filter element, replacement, 40 micron particles, high-density polyethylene (HDPE). For use with AF-2 series filters or AFR-2 series filter regulators.	0.01
AFE2-33	\$3.00	NITRA particulate filter element, replacement, 40 micron particles, high-density polyethylene (HDPE). For use with AF-3 series filters or AFR-3 series filter regulators.	0.01
AFE2-43	\$4.25	NITRA particulate filter element, replacement, 40 micron particles, high-density polyethylene (HDPE). For use with AF-4 series filters or AFR-4 series filter regulators.	0.01
AFE2-63	\$11.00	NITRA particulate filter element, replacement, 40 micron particles, high-density polyethylene (HDPE). For use with AF-6 series filters or AFR-6 series filter regulators.	0.04
AFE2-21	\$1.50	NITRA particulate filter element, replacement, 5 micron particles, high-density polyethylene (HDPE). For use with AF-2 series filters or AFR-2 series filter regulators.	0.01
AFE2-31	\$3.00	NITRA particulate filter element, replacement, 5 micron particles, high-density polyethylene (HDPE). For use with AF-3 series filters or AFR-3 series filter regulators.	0.01
AFE2-41	\$4.25	NITRA particulate filter element, replacement, 5 micron particles, high-density polyethylene (HDPE). For use with AF-4 series filters or AFR-4 series filter regulators.	0.01
AFE2-61	\$11.00	NITRA particulate filter element, replacement, 5 micron particles, high-density polyethylene (HDPE). For use with AF-6 series filters or AFR-6 series filter regulators.	0.04
NITRA Coalescing Filters			
AFE-24	\$20.50	NITRA coalescing oil removal filter element, replacement, 0.3 micron particles, borosilicate glass microfiber. For use with AC-2 series coalescing filters.	0.05
AFE-34	\$25.50	NITRA coalescing oil removal filter element, replacement, 0.3 micron particles, borosilicate glass microfiber. For use with AC-3 series coalescing filters.	0.05
AFE-44	\$40.50	NITRA coalescing oil removal filter element, replacement, 0.3 micron particles, borosilicate glass microfiber. For use with AC-4 series coalescing filters.	0.1
AFE-25	\$20.50	NITRA coalescing oil removal filter element, replacement, 0.01 micron particles, borosilicate glass microfiber. For use with AC-2 series coalescing filters.	0.04
AFE-35	\$25.50	NITRA coalescing oil removal filter element, replacement, 0.01 micron particles, borosilicate glass microfiber. For use with AC-3 series coalescing filters.	0.05
AFE-45	\$40.50	NITRA coalescing oil removal filter element, replacement, 0.01 micron particles, borosilicate glass microfiber. For use with AC-4 series coalescing filters.	0.1



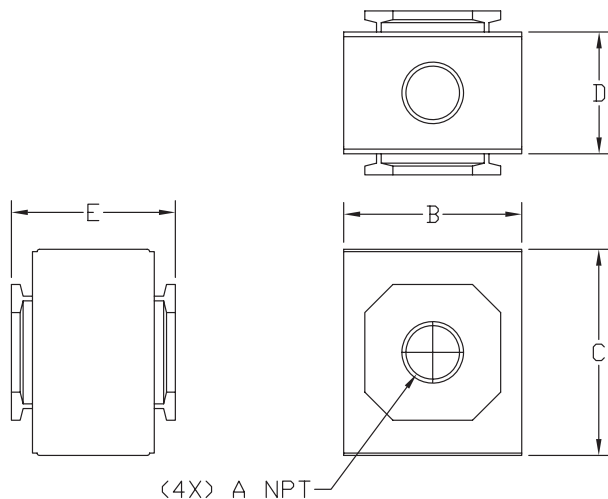
Pneumatic Air Preparation Accessories

Dimensions

mm [inches]

ADB-x

PART NO.	A NPT	DIM B	DIM C	DIM D	DIM E
ADB-21	1/8	30.0 [1.18]	36.0 [1.42]	19.5 [0.77]	28.5 [1.12]
ADB-22	1/4	30.0 [1.18]	36.0 [1.42]	19.5 [0.77]	28.5 [1.12]
ADB-32	1/4	38.0 [1.50]	44.0 [1.73]	26.0 [1.02]	35.0 [1.38]
ADB-33	3/8	38.0 [1.50]	44.0 [1.73]	26.0 [1.02]	35.0 [1.38]
ADB-44	1/2	52.0 [2.05]	52.0 [2.05]	30.0 [1.18]	42.0 [1.65]



See our Web site www.AutomationDirect.com for complete Engineering drawings.



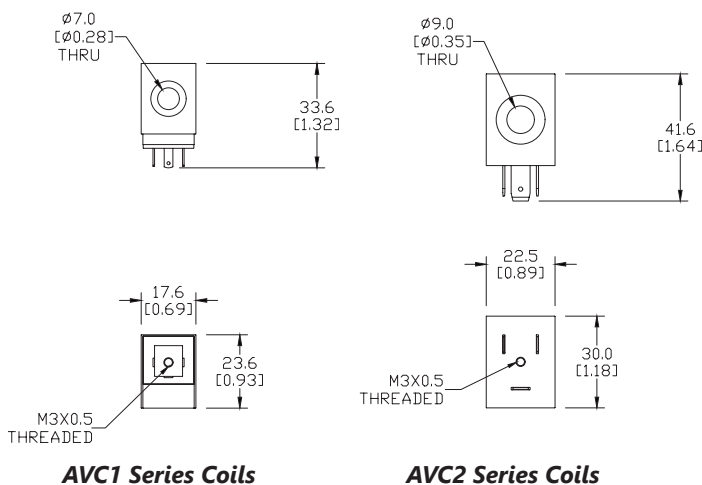
Pneumatic A-Series Direction Control Solenoid Valves - Accessories

**AVC1-12D****AVC2-12D****AVP-31BKT****AVP-31KIT**

Pneumatic A-Series Directional Control Solenoid Valve Series Accessories			
Part No.	Price	Description	Weight (lb)
AVC1-12D	\$12.00	NITRA solenoid coil, 12VDC, 2.5 W. For use with AVS-31 and AVS-51 series valves.	0.1
AVC1-24D	\$12.00	NITRA solenoid coil, 24VDC, 2.5 W. For use with AVS-31 and AVS-51 series valves.	0.1
AVC1-24A	\$12.00	NITRA solenoid coil, 24VAC, 4.0 VA. For use with AVS-31 and AVS-51 series valves.	0.1
AVC1-120A	\$12.00	NITRA solenoid coil, 120VAC, 3.5 VA. For use with AVS-31 and AVS-51 series valves.	0.1
AVC2-12D	\$12.50	NITRA solenoid coil, 12 VDC, 3.0W. For use with AVP-31, AVS-32, AVS-33, AVS-52, AVS-53, AVS-54 series valves and ASD series soft starters.	0.2
AVC2-24D	\$12.50	NITRA solenoid coil, 24 VDC, 3.0W. For use with AVP-31, AVS-32, AVS-33, AVS-52, AVS-53, AVS-54 series valves and ASD series soft starters.	0.2
AVC2-24A	\$12.00	NITRA solenoid coil, 24 VAC, 5.0VA. For use with AVP-31, AVS-32, AVS-33, AVS-52, AVS-53, AVS-54 series valves and ASD series soft starters.	0.2
AVC2-120A	\$12.00	NITRA solenoid coil, 120 VAC, 4.5VA. For use with AVP-31, AVS-32, AVS-33, AVS-52, AVS-53, AVS-54 series valves and ASD series soft starters.	0.2
AVP-31BKT	\$2.00	NITRA individual mounting bracket, plated steel. For use with AVP-31 directional control valves.	0.1
AVP-31KIT	\$3.25	NITRA stacking screws, for use with AVP-31 directional control valves. One kit is required for each additional AVP-31 valve added to the stack.	0.1

Dimensions

mm [inches]



See our website www.AutomationDirect.com for complete Engineering drawings.

AVP-31BKT