



Pneumatic Air Preparation - ARV Series

Manual Shut-off Pressure Relief Valves

**ARV-21****ARV-32****ARV-44**

Mounting bracket included.



Modular Assembly Example

NITRA® pneumatic manual shut-off pressure relief valves are available with 1/8", 1/4", 3/8" or 1/2" female port sizes to meet a broad range of pneumatic air supply applications. The three-way, two-position (3 threaded ports) design is used to shut off upstream pressure and relieve downstream pressure. The manually rotated knob can be locked out with the included padlock.

Provided with a mounting bracket for stand-alone applications, the modular design also enables easy field assembly with NITRA pneumatic filters, regulators and lubricators (using modular assembly brackets purchased separately).

Features

- 1/8", 1/4", 3/8", and 1/2" NPT female port sizes
- Three-way, two-position (3 threaded ports) design is used to shut off upstream pressure and relieve down-stream pressure
- Manually rotated knob can be locked out with the provided padlock
- Mounting bracket provided for stand-alone applications
- Modular design enables easy field assembly with NITRA filters, regulators, lubricators and combination filter regulators
- 2 year warranty



Manual Shut-off Relief Valve



See www.AutomationDirect.com for a wide variety of fitting options

ARV Series Valves

Part No.	Price	Weight (lbs)	Port Size	Fluid	Acting Type	Valve Type	Temperature	Operating Pressure	Maximum Pressure	Proof Pressure	Operation Angle
ARV-21	\$35.00	0.6	1/8"	Air	Manual	3 way 2 position (3 threaded ports)	-5~60°C (23~140°F)	20~130psi (0.15~0.90 MPa) (1.5~9.0 bar)	130psi (0.90MPa) (9.0 bar)	215psi (1.5MPa) (15 bar)	90°
ARV-22	\$35.00	0.6	1/4"								
ARV-32	\$39.50	1.3	1/4"								
ARV-33	\$39.50	1.3	3/8"								
ARV-44	\$52.00	2.1	1/2"								

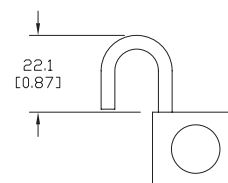
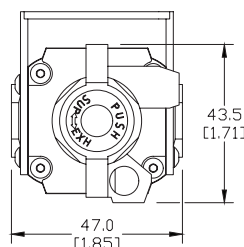
*MOUNTING BRACKET INSTALLATION OPTIONAL

Dimensions

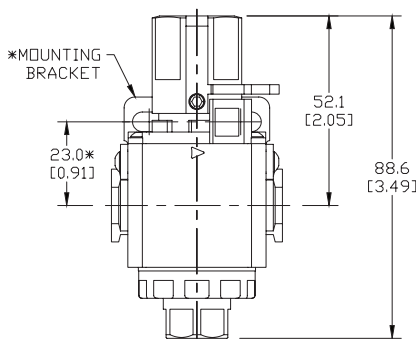
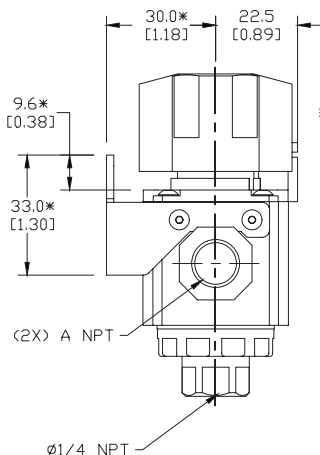
mm [inches]

ARV-2x

PART NO.	A NPT
ARV-21	1/8
ARV-22	1/4



Note: lock included with valve



Note: Unit dimensions are the same for listed models, port NPT varies based on model.

See our Web site www.AutomationDirect.com for complete Engineering drawings.



Pneumatic Air Preparation - ARV Series

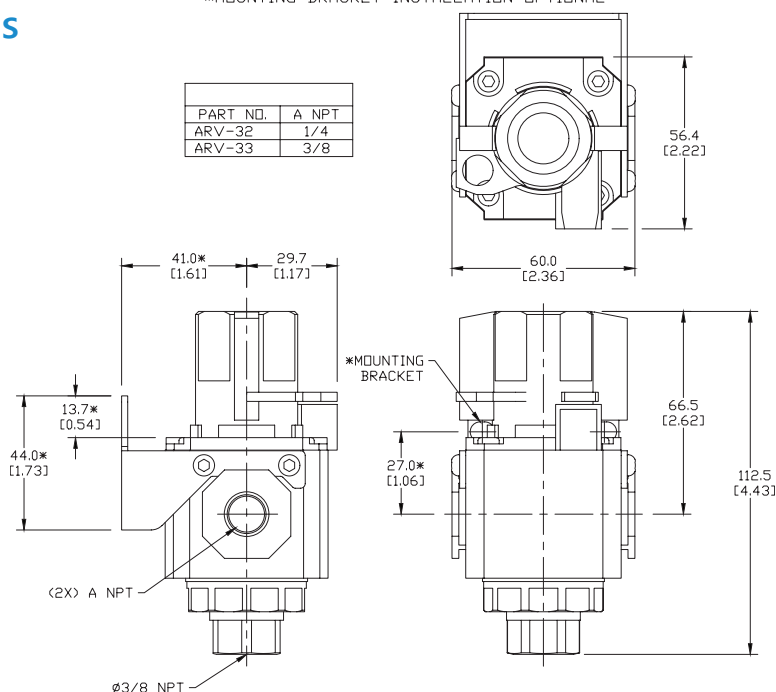
Manual Shut-off Pressure Relief Valves

Dimensions

mm [inches]

ARV-3x

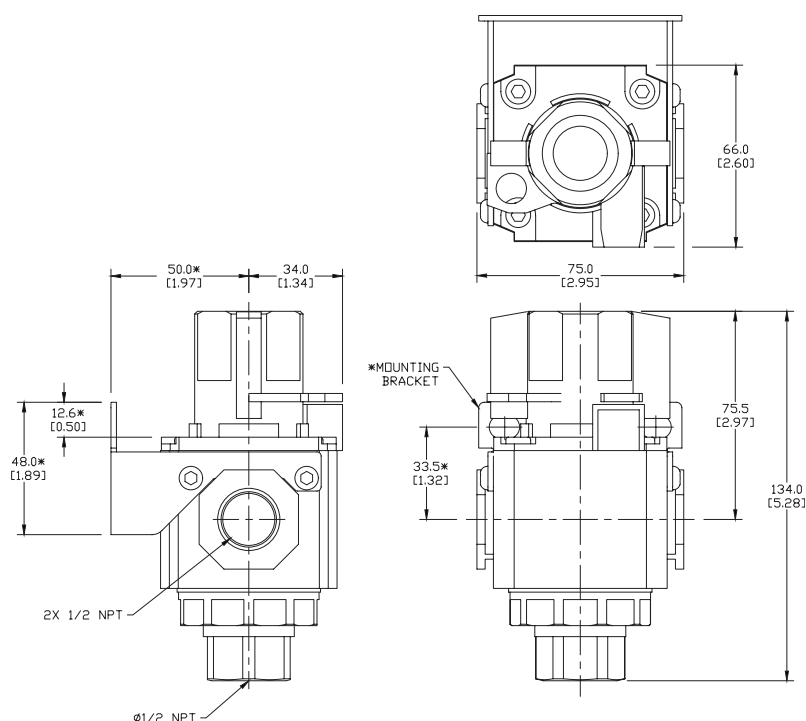
*MOUNTING BRACKET INSTALLATION OPTIONAL



PART NO.	A NPT
ARV-32	1/4
ARV-33	3/8

ARV-4x

*MOUNTING BRACKET INSTALLATION OPTIONAL



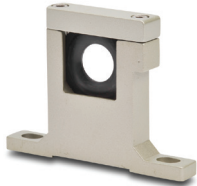
Note: Unit dimensions are the same for listed models, port NPT varies based on model. See our Web site www.AutomationDirect.com for complete Engineering drawings.



Pneumatic Air Preparation Accessories



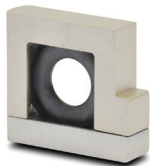
Part No. [ADB-21](#)



Part No. [AB-4T](#)



Part No. [AB-4L](#)



Part No. [AB-4U](#)

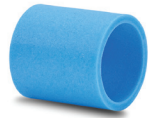
Pneumatic Air Preparation Accessories			
Part No.	Price	Description	Weight (lbs)
ADB-21	\$18.00	NITRA pneumatic distribution block, 1/8in female NPT inlet(s), (3) 1/8in female NPT outlet(s). For use with Ax-21 series air prep components.	0.1
ADB-22	\$18.00	NITRA pneumatic distribution block, 1/4in female NPT inlet(s), (3) 1/4in female NPT outlet(s). For use with Ax-22 series air prep components.	0.1
ADB-32	\$25.50	NITRA pneumatic distribution block, 1/4in female NPT inlet(s), (3) 1/4in female NPT outlet(s). For use with Ax-32 series air prep components.	0.2
ADB-33	\$25.50	NITRA pneumatic distribution block, 3/8in female NPT inlet(s), (3) 3/8in female NPT outlet(s). For use with Ax-33 series air prep components.	0.2
ADB-44	\$27.00	NITRA pneumatic distribution block, 1/2in female NPT inlet(s), (3) 1/2in female NPT outlet(s). For use with Ax-44 series air prep components.	0.4
AB-2T	\$16.50	NITRA modular T-bracket, for use with Ax-2 series air prep components.	0.2
AB-2L	\$16.50	NITRA modular L-bracket, for use with Ax-2 series air prep components.	0.2
AB-2U	\$16.50	NITRA modular U-bracket, for use with Ax-2 series air prep components.	0.1
AB-3T	\$18.00	NITRA modular T-bracket, for use with Ax-3 series air prep components.	0.3
AB-3L	\$18.00	NITRA modular L-bracket, for use with Ax-3 series air prep components.	0.3
AB-3U	\$18.00	NITRA modular U-bracket, for use with Ax-3 series air prep components.	0.2
AB-4T	\$22.00	NITRA modular T-bracket, for use with Ax-4 series air prep components.	0.5
AB-4L	\$22.00	NITRA modular L-bracket, for use with Ax-4 series air prep components.	0.5
AB-4U	\$22.00	NITRA modular U-bracket, for use with Ax-4 series air prep components.	0.4
AB-6T	\$32.00	NITRA modular T-bracket, for use with Ax-6 series air prep components.	1.3
AB-6L	\$30.00	NITRA modular L-bracket, for use with Ax-6 series air prep components.	1.2
AB-6U	\$28.50	NITRA modular U-bracket, for use with Ax-6 series air prep components.	0.8



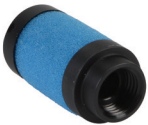
Pneumatic Air Preparation Accessories



Part No. [AFE2-43](#)



Part No. [AFE2-41](#)



Part No. [AFE-24](#)



Part No. [AFE-35](#)

Pneumatic Air Preparation Accessories			
Part No.	Price	Description	Weight (lbs)
NITRA Gen 2 Particulate Filters			
AFE2-23	\$1.50	NITRA particulate filter element, replacement, 40 micron particles, high-density polyethylene (HDPE). For use with AF-2 series filters or AFR-2 series filter regulators.	0.01
AFE2-33	\$3.00	NITRA particulate filter element, replacement, 40 micron particles, high-density polyethylene (HDPE). For use with AF-3 series filters or AFR-3 series filter regulators.	0.01
AFE2-43	\$4.25	NITRA particulate filter element, replacement, 40 micron particles, high-density polyethylene (HDPE). For use with AF-4 series filters or AFR-4 series filter regulators.	0.01
AFE2-63	\$11.00	NITRA particulate filter element, replacement, 40 micron particles, high-density polyethylene (HDPE). For use with AF-6 series filters or AFR-6 series filter regulators.	0.04
AFE2-21	\$1.50	NITRA particulate filter element, replacement, 5 micron particles, high-density polyethylene (HDPE). For use with AF-2 series filters or AFR-2 series filter regulators.	0.01
AFE2-31	\$3.00	NITRA particulate filter element, replacement, 5 micron particles, high-density polyethylene (HDPE). For use with AF-3 series filters or AFR-3 series filter regulators.	0.01
AFE2-41	\$4.25	NITRA particulate filter element, replacement, 5 micron particles, high-density polyethylene (HDPE). For use with AF-4 series filters or AFR-4 series filter regulators.	0.01
AFE2-61	\$11.00	NITRA particulate filter element, replacement, 5 micron particles, high-density polyethylene (HDPE). For use with AF-6 series filters or AFR-6 series filter regulators.	0.04
NITRA Coalescing Filters			
AFE-24	\$20.50	NITRA coalescing oil removal filter element, replacement, 0.3 micron particles, borosilicate glass microfiber. For use with AC-2 series coalescing filters.	0.05
AFE-34	\$25.50	NITRA coalescing oil removal filter element, replacement, 0.3 micron particles, borosilicate glass microfiber. For use with AC-3 series coalescing filters.	0.05
AFE-44	\$40.50	NITRA coalescing oil removal filter element, replacement, 0.3 micron particles, borosilicate glass microfiber. For use with AC-4 series coalescing filters.	0.1
AFE-25	\$20.50	NITRA coalescing oil removal filter element, replacement, 0.01 micron particles, borosilicate glass microfiber. For use with AC-2 series coalescing filters.	0.04
AFE-35	\$25.50	NITRA coalescing oil removal filter element, replacement, 0.01 micron particles, borosilicate glass microfiber. For use with AC-3 series coalescing filters.	0.05
AFE-45	\$40.50	NITRA coalescing oil removal filter element, replacement, 0.01 micron particles, borosilicate glass microfiber. For use with AC-4 series coalescing filters.	0.1



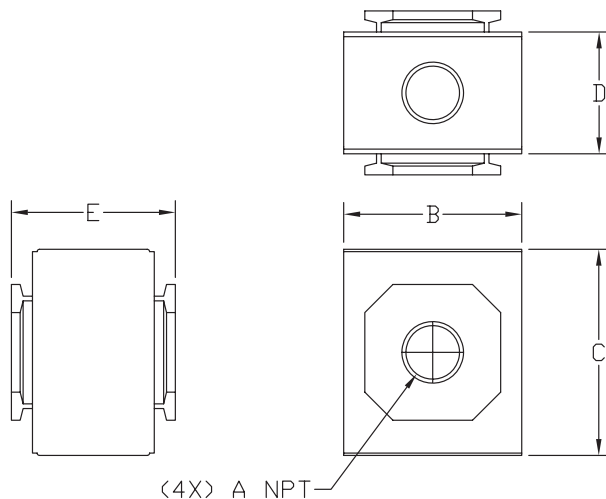
Pneumatic Air Preparation Accessories

Dimensions

mm [inches]

ADB-x

PART NO.	A NPT	DIM B	DIM C	DIM D	DIM E
ADB-21	1/8	30.0 [1.18]	36.0 [1.42]	19.5 [0.77]	28.5 [1.12]
ADB-22	1/4	30.0 [1.18]	36.0 [1.42]	19.5 [0.77]	28.5 [1.12]
ADB-32	1/4	38.0 [1.50]	44.0 [1.73]	26.0 [1.02]	35.0 [1.38]
ADB-33	3/8	38.0 [1.50]	44.0 [1.73]	26.0 [1.02]	35.0 [1.38]
ADB-44	1/2	52.0 [2.05]	52.0 [2.05]	30.0 [1.18]	42.0 [1.65]



See our Web site www.AutomationDirect.com for complete Engineering drawings.