



# Pneumatic Air Preparation - AF Series Filters



*Modular Assembly Example*

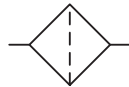
NITRA® pneumatic particulate and moisture separation air filters are available with 3/8" NPT female port sizes to meet a broad range of pneumatic air supply filtration applications. Available with either a manual, semi-automatic, or automatic drain. All-metal bowls with sight gauge are available on all sizes. Polycarbonate bowls are available on 3xx size, with metal bowl guards included on 3xx size. Replaceable 40-micron filter elements are standard. An optional 5-micron filter element (purchased separately and customer installable) is available when stricter filtration is required. Provided with a mounting bracket for stand-alone applications, the modular design also enables easy field assembly for combining with NITRA pneumatic regulators and lubricators (using modular assembly brackets purchased separately).

## Features

- 3/8" NPT female port sizes
- 40-micron replaceable filter element standard; for stricter filtration an optional 5-micron filter element purchased separately is easily customer installable
- All-metal bowls with sight gauge available on all sizes. Polycarbonate bowls available on 3xx size, with metal bowl guards included on 3xx size.
- Manual, semi-automatic and automatic drains available
- Mounting bracket provided for stand-alone applications
- Modular design enables easy field assembly for combining with NITRA regulators and lubricators
- 2-year warranty



*Mounting bracket included.*



*Air Filter*



See [www.AutomationDirect.com](http://www.AutomationDirect.com) for a wide variety of fitting options

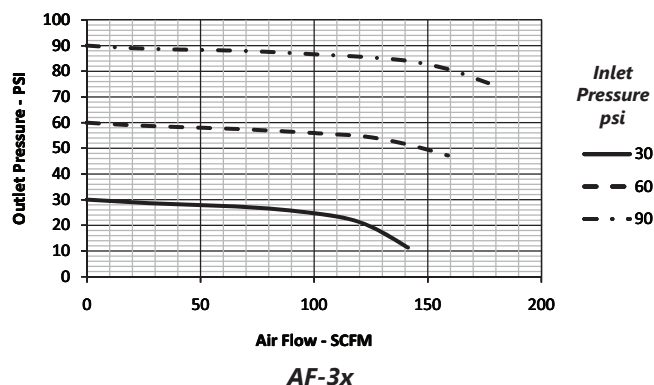


# Pneumatic Air Preparation - AF Series Filters

## AF Series Filters Cont.

Part No.	Price	Weight (lbs)	Port Size (FNPT)	Drain Bowl	Drain Type	Fluid	Temperature	Filtering Grade	Operating Pressure	Maximum Pressure	Proof Pressure
<a href="#">AF-333-MD</a>	Retired	1.0	3/8"	40cc Metal with sight gauge	Manual	Air	23~140°F (-4~60°C)	40μ (5μ element can be ordered separately and field installed)	20~130psi (0.14~0.90MPa) (1.4~9.0 bar)	130psi (0.90MPa) (9.0 bar)	215psi (1.5MPa) (15 bar)

## Performance Charts



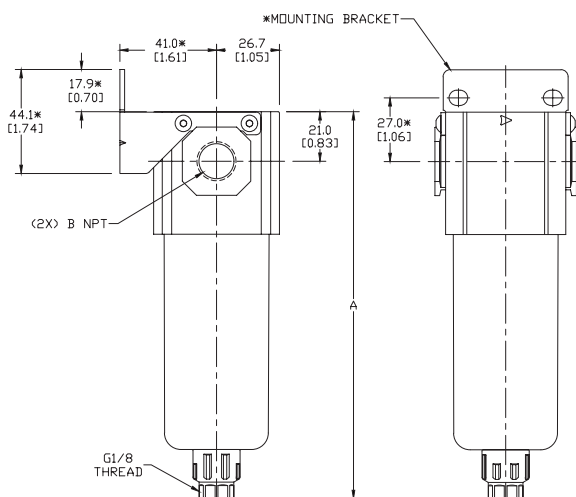
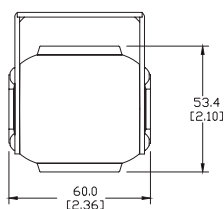
## Dimensions

mm [inches]

AF-3x

\*MOUNTING BRACKET INSTALLATION OPTIONAL

PART NO.	DIM A	B NPT
AF-323-A	164.0 [6.46]	
AF-323-AD	162.8 [6.41]	
AF-323-D	162.8 [6.41]	1/4
AF-323-M	164.0 [6.46]	
AF-323-MD	162.8 [6.41]	
AF-333-MD	162.8 [6.41]	3/8



Note: Unit dimensions are the same for listed models; port NPT varies based on model.

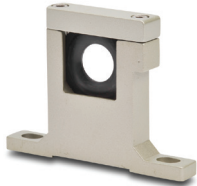
See our Web site [www.AutomationDirect.com](http://www.AutomationDirect.com) for complete Engineering drawings.



# Pneumatic Air Preparation Accessories



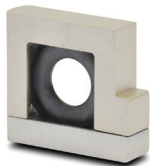
**Part No. [ADB-21](#)**



**Part No. [AB-4T](#)**



**Part No. [AB-4L](#)**



**Part No. [AB-4U](#)**

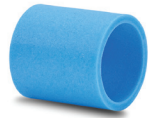
Pneumatic Air Preparation Accessories			
Part No.	Price	Description	Weight (lbs)
<a href="#">ADB-21</a>	\$18.00	NITRA pneumatic distribution block, 1/8in female NPT inlet(s), (3) 1/8in female NPT outlet(s). For use with Ax-21 series air prep components.	0.1
<a href="#">ADB-22</a>	\$18.00	NITRA pneumatic distribution block, 1/4in female NPT inlet(s), (3) 1/4in female NPT outlet(s). For use with Ax-22 series air prep components.	0.1
<a href="#">ADB-32</a>	\$25.50	NITRA pneumatic distribution block, 1/4in female NPT inlet(s), (3) 1/4in female NPT outlet(s). For use with Ax-32 series air prep components.	0.2
<a href="#">ADB-33</a>	\$25.50	NITRA pneumatic distribution block, 3/8in female NPT inlet(s), (3) 3/8in female NPT outlet(s). For use with Ax-33 series air prep components.	0.2
<a href="#">ADB-44</a>	\$27.00	NITRA pneumatic distribution block, 1/2in female NPT inlet(s), (3) 1/2in female NPT outlet(s). For use with Ax-44 series air prep components.	0.4
<a href="#">AB-2T</a>	\$16.50	NITRA modular T-bracket, for use with Ax-2 series air prep components.	0.2
<a href="#">AB-2L</a>	\$16.50	NITRA modular L-bracket, for use with Ax-2 series air prep components.	0.2
<a href="#">AB-2U</a>	\$16.50	NITRA modular U-bracket, for use with Ax-2 series air prep components.	0.1
<a href="#">AB-3T</a>	\$18.00	NITRA modular T-bracket, for use with Ax-3 series air prep components.	0.3
<a href="#">AB-3L</a>	\$18.00	NITRA modular L-bracket, for use with Ax-3 series air prep components.	0.3
<a href="#">AB-3U</a>	\$18.00	NITRA modular U-bracket, for use with Ax-3 series air prep components.	0.2
<a href="#">AB-4T</a>	\$22.00	NITRA modular T-bracket, for use with Ax-4 series air prep components.	0.5
<a href="#">AB-4L</a>	\$22.00	NITRA modular L-bracket, for use with Ax-4 series air prep components.	0.5
<a href="#">AB-4U</a>	\$22.00	NITRA modular U-bracket, for use with Ax-4 series air prep components.	0.4
<a href="#">AB-6T</a>	\$32.00	NITRA modular T-bracket, for use with Ax-6 series air prep components.	1.3
<a href="#">AB-6L</a>	\$30.00	NITRA modular L-bracket, for use with Ax-6 series air prep components.	1.2
<a href="#">AB-6U</a>	\$28.50	NITRA modular U-bracket, for use with Ax-6 series air prep components.	0.8



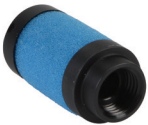
# Pneumatic Air Preparation Accessories



**Part No. [AFE2-43](#)**



**Part No. [AFE2-41](#)**



**Part No. [AFE-24](#)**



**Part No. [AFE-35](#)**

Pneumatic Air Preparation Accessories			
Part No.	Price	Description	Weight (lbs)
<b>NITRA Gen 2 Particulate Filters</b>			
<a href="#">AFE2-23</a>	\$1.50	NITRA particulate filter element, replacement, 40 micron particles, high-density polyethylene (HDPE). For use with AF-2 series filters or AFR-2 series filter regulators.	0.01
<a href="#">AFE2-33</a>	\$3.00	NITRA particulate filter element, replacement, 40 micron particles, high-density polyethylene (HDPE). For use with AF-3 series filters or AFR-3 series filter regulators.	0.01
<a href="#">AFE2-43</a>	\$4.25	NITRA particulate filter element, replacement, 40 micron particles, high-density polyethylene (HDPE). For use with AF-4 series filters or AFR-4 series filter regulators.	0.01
<a href="#">AFE2-63</a>	\$11.00	NITRA particulate filter element, replacement, 40 micron particles, high-density polyethylene (HDPE). For use with AF-6 series filters or AFR-6 series filter regulators.	0.04
<a href="#">AFE2-21</a>	\$1.50	NITRA particulate filter element, replacement, 5 micron particles, high-density polyethylene (HDPE). For use with AF-2 series filters or AFR-2 series filter regulators.	0.01
<a href="#">AFE2-31</a>	\$3.00	NITRA particulate filter element, replacement, 5 micron particles, high-density polyethylene (HDPE). For use with AF-3 series filters or AFR-3 series filter regulators.	0.01
<a href="#">AFE2-41</a>	\$4.25	NITRA particulate filter element, replacement, 5 micron particles, high-density polyethylene (HDPE). For use with AF-4 series filters or AFR-4 series filter regulators.	0.01
<a href="#">AFE2-61</a>	\$11.00	NITRA particulate filter element, replacement, 5 micron particles, high-density polyethylene (HDPE). For use with AF-6 series filters or AFR-6 series filter regulators.	0.04
<b>NITRA Coalescing Filters</b>			
<a href="#">AFE-24</a>	\$20.50	NITRA coalescing oil removal filter element, replacement, 0.3 micron particles, borosilicate glass microfiber. For use with AC-2 series coalescing filters.	0.05
<a href="#">AFE-34</a>	\$25.50	NITRA coalescing oil removal filter element, replacement, 0.3 micron particles, borosilicate glass microfiber. For use with AC-3 series coalescing filters.	0.05
<a href="#">AFE-44</a>	\$40.50	NITRA coalescing oil removal filter element, replacement, 0.3 micron particles, borosilicate glass microfiber. For use with AC-4 series coalescing filters.	0.1
<a href="#">AFE-25</a>	\$20.50	NITRA coalescing oil removal filter element, replacement, 0.01 micron particles, borosilicate glass microfiber. For use with AC-2 series coalescing filters.	0.04
<a href="#">AFE-35</a>	\$25.50	NITRA coalescing oil removal filter element, replacement, 0.01 micron particles, borosilicate glass microfiber. For use with AC-3 series coalescing filters.	0.05
<a href="#">AFE-45</a>	\$40.50	NITRA coalescing oil removal filter element, replacement, 0.01 micron particles, borosilicate glass microfiber. For use with AC-4 series coalescing filters.	0.1



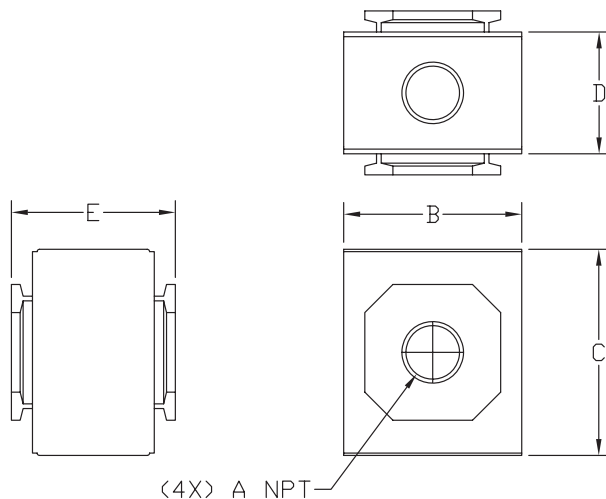
# Pneumatic Air Preparation Accessories

## Dimensions

mm [inches]

### ADB-x

PART NO.	A NPT	DIM B	DIM C	DIM D	DIM E
ADB-21	1/8	30.0 [1.18]	36.0 [1.42]	19.5 [0.77]	28.5 [1.12]
ADB-22	1/4	30.0 [1.18]	36.0 [1.42]	19.5 [0.77]	28.5 [1.12]
ADB-32	1/4	38.0 [1.50]	44.0 [1.73]	26.0 [1.02]	35.0 [1.38]
ADB-33	3/8	38.0 [1.50]	44.0 [1.73]	26.0 [1.02]	35.0 [1.38]
ADB-44	1/2	52.0 [2.05]	52.0 [2.05]	30.0 [1.18]	42.0 [1.65]



See our Web site [www.AutomationDirect.com](http://www.AutomationDirect.com) for complete Engineering drawings.



# Pneumatic Air Preparation Accessories

## Dimensions

mm [inches]

### AB-xT

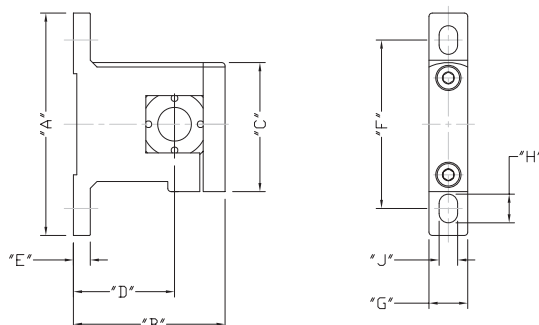


TABLE 1									
PART NUMBER	DIM "A"	DIM "B"	DIM "C"	DIM "D"	DIM "E"	DIM "F"	DIM "G"	DIM "H"	DIM "J"
AB-2T	66.0 [2.60]	45.0 [1.77]	38.3 [1.51]	30.0 [1.18]	5.0 [0.20]	50.0 [1.97]	11.5 [0.45]	8.5 [0.33]	5.5 [0.22]
AB-3T	88.0 [3.46]	60.5 [2.38]	49.3 [1.94]	41.5 [1.63]	7.0 [0.28]	70.0 [2.76]	12.5 [0.49]	9.0 [0.35]	6.5 [0.26]
AB-4T	104.0 [4.09]	76.0 [2.99]	58.5 [2.30]	50.0 [1.97]	7.0 [0.28]	80.0 [3.15]	15.5 [0.61]	12.0 [0.47]	8.6 [0.34]
AB-6T	128.0 [5.04]	104.0 [4.09]	79.5 [3.13]	70.0 [2.76]	10.0 [0.39]	100.0 [3.94]	19.5 [0.77]	16.0 [0.63]	11.0 [0.43]

### AB-xL

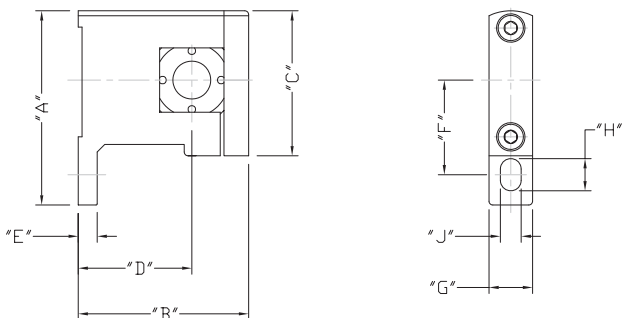


TABLE 1									
PART NUMBER	DIM "A"	DIM "B"	DIM "C"	DIM "D"	DIM "E"	DIM "F"	DIM "G"	DIM "H"	DIM "J"
AB-2L	51.3 [2.02]	45.0 [1.77]	38.3 [1.51]	30.0 [1.18]	5.0 [0.20]	25.0 [0.98]	11.5 [0.45]	8.5 [0.33]	5.5 [0.22]
AB-3L	68.6 [2.70]	60.5 [2.38]	49.3 [1.94]	41.5 [1.63]	7.0 [0.28]	35.0 [1.38]	12.5 [0.49]	9.0 [0.35]	6.5 [0.26]
AB-4L	79.5 [3.13]	76.0 [2.99]	58.5 [2.30]	50.0 [1.97]	7.0 [0.28]	40.0 [1.57]	15.5 [0.61]	12.0 [0.47]	8.6 [0.34]
AB-6L	103.5 [4.07]	104.0 [4.09]	79.5 [3.13]	70.0 [2.76]	10.0 [0.39]	50.0 [1.97]	19.5 [0.77]	16.0 [0.63]	11.0 [0.43]

See our Web site [www.AutomationDirect.com](http://www.AutomationDirect.com) for complete Engineering drawings.



# Pneumatic Air Preparation Accessories

## Dimensions

mm [inches]

**AB-xU**

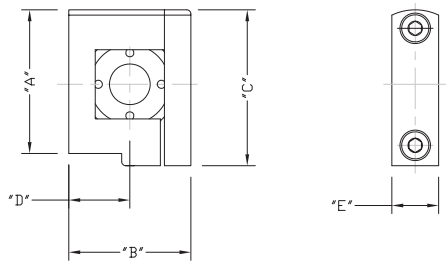


TABLE 1					
PART NUMBER	DIM "A"	DIM "B"	DIM "C"	DIM "D"	DIM "E"
AB-2U	35.5 [1.39]	30.0 [1.18]	38.3 [1.51]	15.0 [0.59]	11.5 [0.45]
AB-3U	43.8 [1.72]	38.0 [1.50]	49.3 [1.94]	19.5 [0.75]	12.5 [0.49]
AB-4U	52.5 [2.07]	52.0 [2.05]	58.5 [2.30]	26.0 [1.02]	15.5 [0.61]
AB-6U	76.5 [3.01]	68.0 [2.68]	79.5 [3.13]	34.0 [1.34]	19.5 [0.77]

See our Web site [www.AutomationDirect.com](http://www.AutomationDirect.com) for complete Engineering drawings.