

# NEMA 4, 4X, and 12 Stainless Steel Freestanding Two-Door with 3-Point Handle



## Applications

Designed to house electrical and electronic controls, terminals, and instruments in areas that are regularly hosed down or are otherwise very wet. Enclosures are also suitable for outdoor applications.



## Construction

- Body and doors fabricated from 12-gauge 304 stainless steel
- Continuously-welded seams ground smooth
- "Uni-strut" mounting channels are welded horizontally to interior body sides (top, bottom and center)
- Optional swing, half, full, and rack panels can be mounted anywhere along "uni-strut" channel
- Rolled lip around three sides of door and along top of enclosure's opening excludes liquids and contaminants from entering
- 3 -point 316L SS padlocking handles
- Heavy gauge continuous hinge
- Pull hinge pin to remove doors
- Removable print pocket is provided
- Heavy-duty removable lifting eyes
- Doors are sealed with poured-in-place polyurethane gasket
- Grounding provisions provided
- Uses WAL3\_SS series handles

## Finish

- Smooth-grained stainless steel finish

## Listings

- UL 508, 4, 4X, and 12 [UL File E64791]
- NEMA/EEMAC 4, 4X, and 12



Note: For current listings, please see [www.automationdirect.com](http://www.automationdirect.com)

## NEMA 4, 4X, and 12 Stainless Steel Freestanding Two-Door Enclosures with 3-Point Handle

Part Number	Price	Enclosure SizeHxWxD
<b><u>WA724824SSFSDN43PT</u></b>	\$7,203.00	72.12 x 48.12 x 25.29 [1832 x 1222 x 642]

Notes: Subpanels must be ordered separately.  
Dimensions in inches [millimeters]  
Letters in table correspond to letters on dimensional drawings.

# NEMA 4, 4X, and 12 Stainless Steel Freestanding Two-Door with 3-Point Handle



## Standard Subpanels

Enclosures	Full Height	
	Painted Steel	Galvanized
<a href="#"><u>WA724824SSFSDN43PT</u></a>	<a href="#"><u>WA72P48F1</u></a>	<a href="#"><u>WA72P48F1G</u></a>

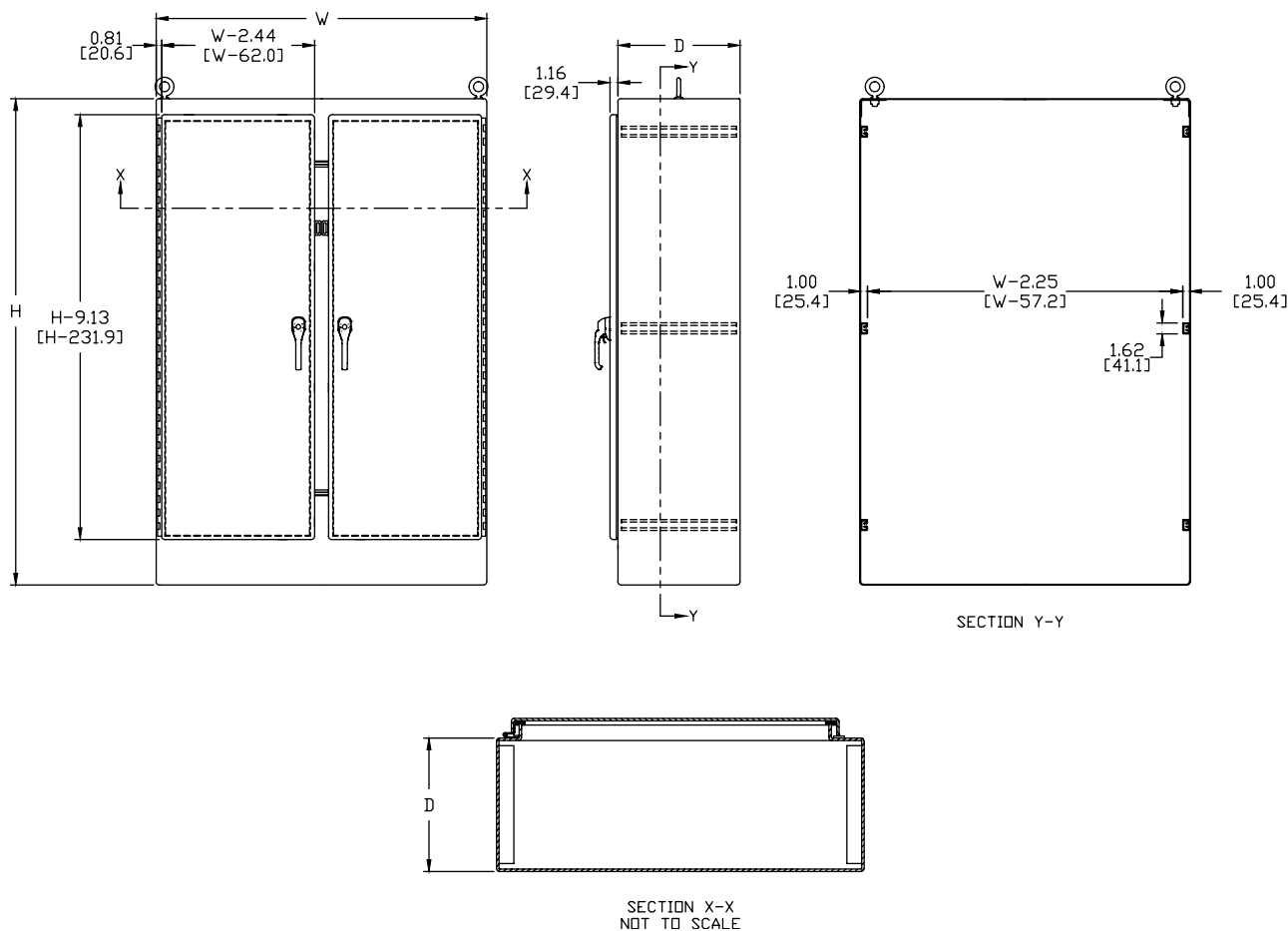
## Side-Mount Panels

Enclosures	Painted Steel	
<a href="#"><u>WA724824SSFSDN43PT</u></a>	<a href="#"><u>WA72SMP14</u></a>	<a href="#"><u>WA72SMP20</u></a>

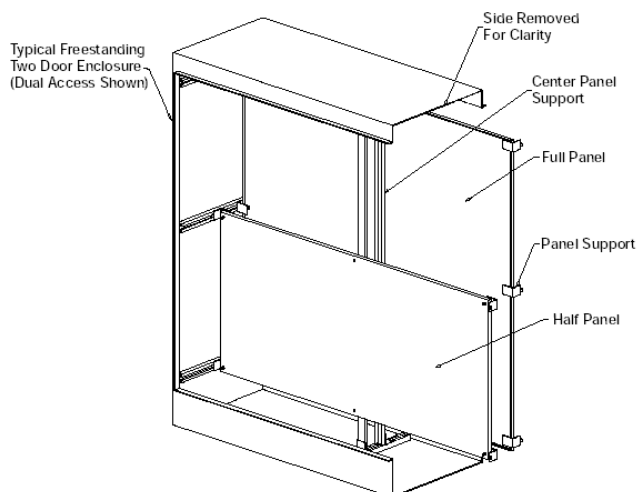
# NEMA 4, 4X, and 12 Stainless Steel Freestanding Two-Door with 3-Point Handle



## Dimensions



# WA-F1/F2 Panels for Two-Door Freestanding Enclosures



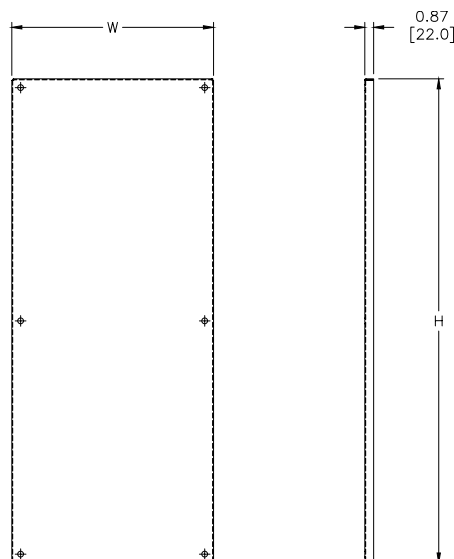
## Description

- Panels for two-door single-access and two-door dual-access, freestanding NEMA 12 enclosures
- Manufactured of 10-gauge steel and can be positioned anywhere along horizontal depth-wise mounting channels
- Half-height panels can be located in the upper or lower portion of the enclosure
- Mounting hardware is furnished with each panel
- Painted steel subpanels are painted white polyester powder over phosphatized surfaces
- Galvanized subpanels have a conductive finish (no paint)

Painted Steel	Price	Galvanized	Price	Panel Size AxB	Subpanel Type
<b>WA60P48F1</b>	\$708.00	<b>WA60P48F1G</b>	\$708.00	48.00 x 44.00 [1219 x 1118]	Full
<b>WA72P48F1</b>	\$801.00	<b>WA72P48F1G</b>	\$801.00	60.00 x 44.00 [1524 x 1118]	Full
<b>WA72P60F1</b>	\$928.00	<b>WA72P60F1G</b>	\$928.00	60.00 x 56.00 [1524 x 1422]	Full
<b>WA72P72F1</b>	\$1,055.00	—	—	68.00 x 68.00 [1727 x 1727]	Full
<b>WA90P48F1</b>	\$942.00	<b>WA90P48F1G</b>	\$1,020.00	78.00 x 44.00 [1981 x 1118]	Full
<b>WA90P72F1</b>	\$1,272.00	—	—	78.00 x 68.00 [1981 x 1727]	Full

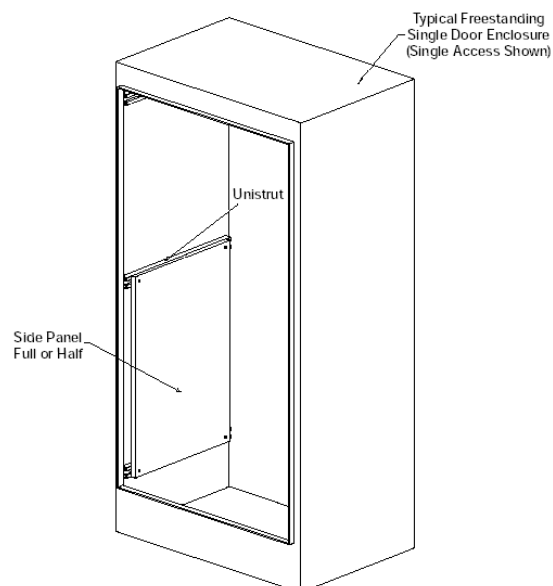
Notes: Dimensions in inches [millimeters].  
Letters in table correspond to letters on dimensional drawing.  
Suffix F1 = full panel, F2 = half panel

## Dimensions



Note: Center panel support is supplied with a regular two-door enclosure panel. This support is used only as a brace. It is not intended to be used as a support for single-door subpanels, relay racks, etc. Use WA\_FSCPS panel supports for this purpose.

# WA-SMP Series Side-Mount Panels for Freestanding Enclosures



## Description

- Panels for freestanding NEMA 4 and freestanding NEMA 12 enclosures
- Panels are fabricated from 12-gauge steel
- They provide extra mounting space on the sides of the enclosure
- Mounting hardware is furnished with each panel
- Painted steel subpanels are painted white polyester powder over phosphatized surfaces
- Galvanized subpanels have a conductive finish (no paint)
- Panels attach securely to mounting channels

Painted Steel	Price	Panel Size AxB
<b>WA72SMP14</b>	\$236.00	60.00 x 14.00 [1524 x 356]
<b>WA72SMP20</b>	\$288.00	60.00 x 20.00 [1524 x 508]

Note: Dimensions in inches [millimeters].

## Dimensions

