

NEMA 4, 4X, and 12 Stainless Steel Freestanding Two-Door with 3-Point Handle



Applications

Designed to house electrical and electronic controls, terminals, and instruments in areas that are regularly hosed down or are otherwise very wet. Enclosures are also suitable for outdoor applications.



Construction

- Body and doors fabricated from 12-gauge 304 stainless steel
- Continuously-welded seams ground smooth
- “Uni-strut” mounting channels are welded horizontally to interior body sides (top, bottom and center)
- Optional swing, half, full, and rack panels can be mounted anywhere along “uni-strut” channel
- Rolled lip around three sides of door and along top of enclosure’s opening excludes liquids and contaminants from entering
- 3 -point 316L SS padlocking handles
- Heavy gauge continuous hinge
- Pull hinge pin to remove doors
- Removable print pocket is provided
- Heavy-duty removable lifting eyes
- Doors are sealed with poured-in-place polyurethane gasket
- Grounding provisions provided
- Uses WAL3_SS series handles

Finish

- Smooth-grained stainless steel finish

Listings

- UL 508, 4, 4X, and 12 [UL File E64791]
- NEMA/EEMAC 4, 4X, and 12



Note: For current listings, please see www.automationdirect.com

Shipping Schedule

Same day 1 - 5 days 1 - 7 days 1 - 15 days 1 - 20 days

Color indicates shipping lead time in business days.

NEMA 4, 4X, and 12 Stainless Steel Freestanding Two-Door Enclosures with 3-Point Handle

Part Number	Price	Enclosure SizeHxWxD
WA724824SSFSDN43PT	\$7,203.00	72.12 x 48.12 x 25.29 [1832 x 1222 x 642]

Notes: Subpanels must be ordered separately.
Dimensions in inches [millimeters]
Letters in table correspond to letters on dimensional drawings.

NEMA 4, 4X, and 12 Stainless Steel Freestanding Two-Door with 3-Point Handle



Shipping Schedule					
Same day	1 - 5 days	1 - 7 days	1-10 days	1 - 15 days	1 - 20 days
Color indicates shipping lead time in business days.					

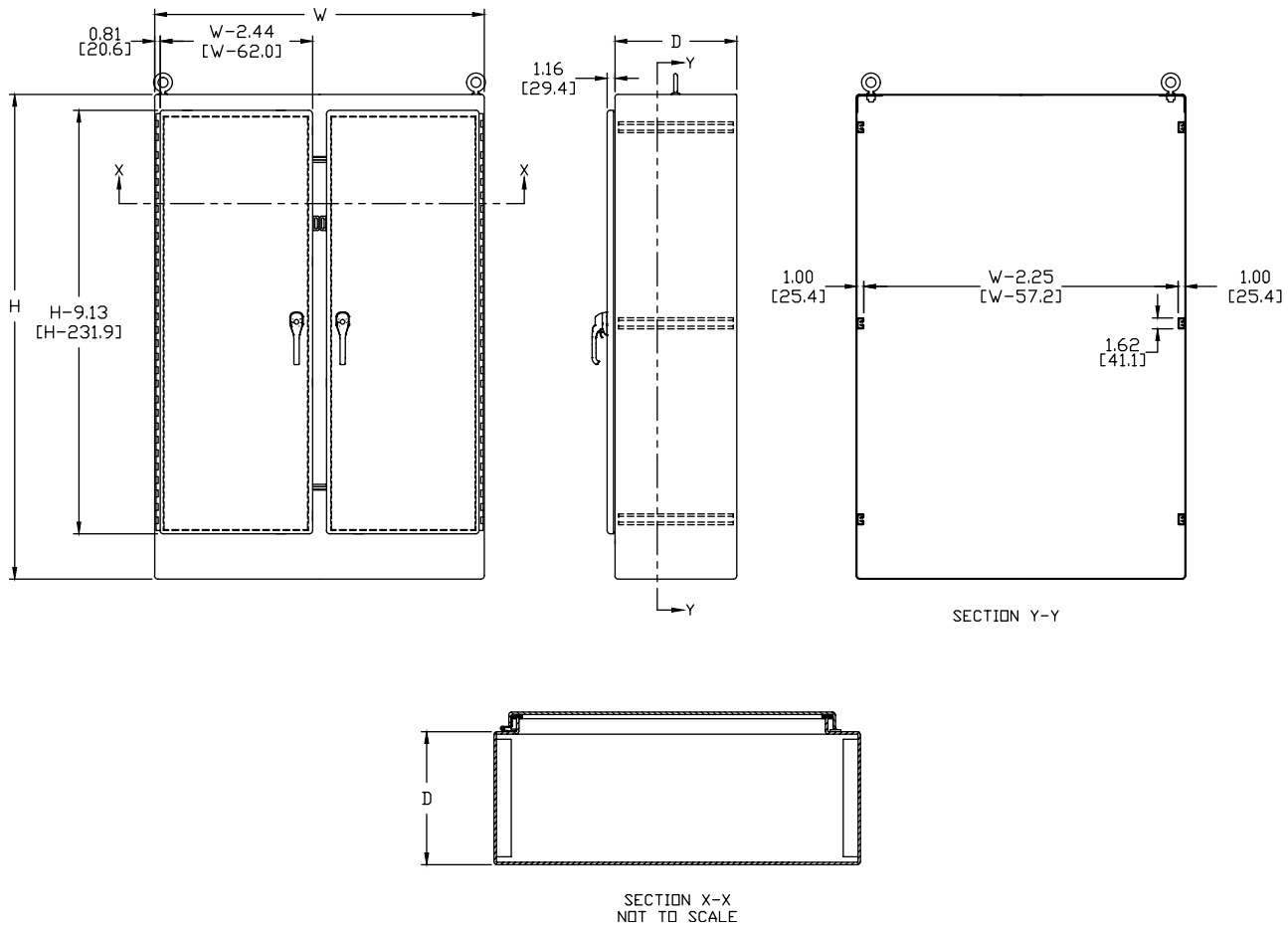
Standard Subpanels		
Enclosures	Full Height	
	Painted Steel	Galvanized
WA724824SSFSDN43PT	WA72P48F1	WA72P48F1G

Side-Mount Panels		
Enclosures	Painted Steel	
WA724824SSFSDN43PT	WA72SMP14	WA72SMP20

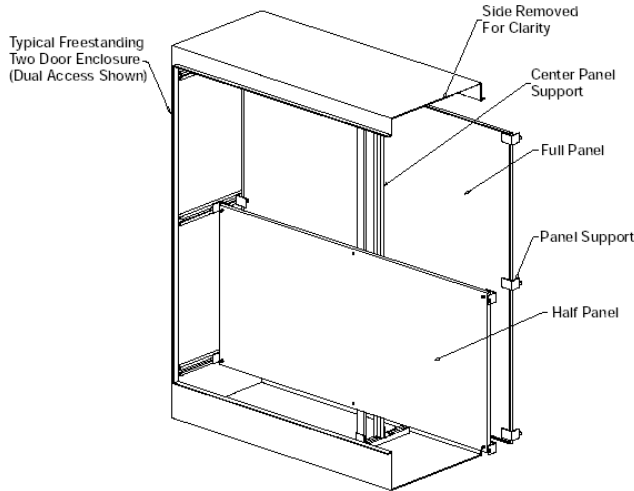
NEMA 4, 4X, and 12 Stainless Steel Freestanding Two-Door with 3-Point Handle



Dimensions



WA-F1/F2 Panels for Two-Door Freestanding Enclosures



Description

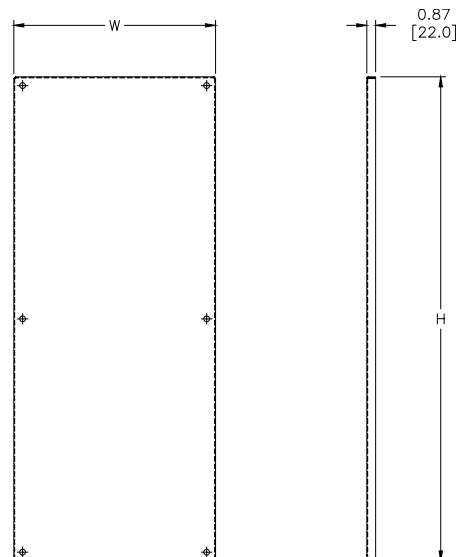
- Panels for two-door single-access and two-door dual-access, freestanding NEMA 12 enclosures
- Manufactured of 10-gauge steel and can be positioned anywhere along horizontal depth-wise mounting channels
- Half-height panels can be located in the upper or lower portion of the enclosure
- Mounting hardware is furnished with each panel
- Painted steel subpanels are painted white polyester powder over phosphatized surfaces
- Galvanized subpanels have a conductive finish (no paint)

Shipping Schedule				
Same day	1 - 5 days	1 - 7 days	1 - 15 days	1 - 20 days
Color indicates shipping lead time in business days.				

Painted Steel	Price	Galvanized	Price	Panel Size AxB	Subpanel Type
WA60P48F1	\$708.00	WA60P48F1G	\$708.00	48.00 x 44.00 [1219 x 1118]	Full
WA72P48F1	\$801.00	WA72P48F1G	\$801.00	60.00 x 44.00 [1524 x 1118]	Full
WA72P60F1	\$928.00	WA72P60F1G	\$928.00	60.00 x 56.00 [1524 x 1422]	Full
WA72P72F1	\$1,055.00	—	—	68.00 x 68.00 [1727 x 1727]	Full
WA90P48F1	\$942.00	WA90P48F1G	\$1,020.00	78.00 x 44.00 [1981 x 1118]	Full
WA90P72F1	\$1,272.00	—	—	78.00 x 68.00 [1981 x 1727]	Full

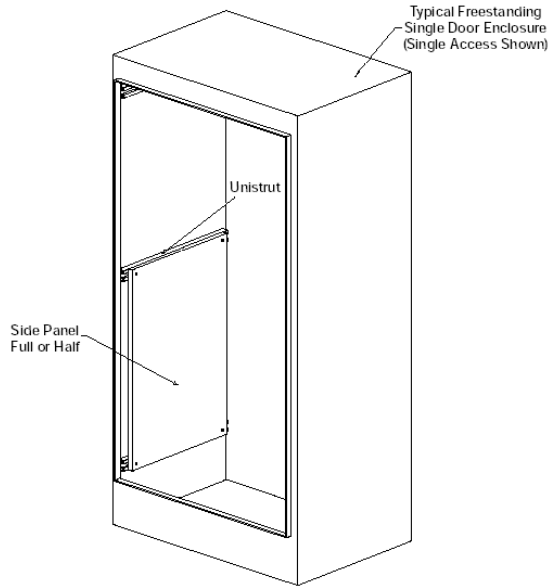
Notes: Dimensions in inches [millimeters].
 Letters in table correspond to letters on dimensional drawing.
 Suffix F1 = full panel, F2 = half panel

Dimensions



Note: Center panel support is supplied with a regular two-door enclosure panel. This support is used only as a brace. It is not intended to be used as a support for single-door subpanels, relay racks, etc. Use WA_FSCPS panel supports for this purpose.

WA-SMP Series Side-Mount Panels for Freestanding Enclosures



Description

- Panels for freestanding NEMA 4 and freestanding NEMA 12 enclosures
- Panels are fabricated from 12-gauge steel
- They provide extra mounting space on the sides of the enclosure
- Mounting hardware is furnished with each panel
- Painted steel subpanels are painted white polyester powder over phosphatized surfaces
- Galvanized subpanels have a conductive finish (no paint)
- Panels attach securely to mounting channels

Shipping Schedule				
Same day	1 - 5 days	1 - 7 days	1 - 15 days	1 - 20 days
Color indicates shipping lead time in business days.				

Painted Steel	Price	Panel Size AxB
WA72SMP14	\$236.00	60.00 x 14.00 [1524 x 356]
WA72SMP20	\$288.00	60.00 x 20.00 [1524 x 508]
Note: Dimensions in inches [millimeters].		

Dimensions

