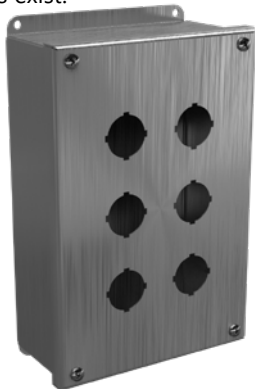


# 30mm Pushbutton NEMA 4, 4X, 12, and 13 Stainless Steel Wall-Mount



## Application

Designed to hold standard 30mm [1.18 in] pushbuttons, switches, and pilot lights. Provides protection from dirt, dust, oil and water. Also used in areas where serious corrosion problems exist.



## Construction

- Fabricated from 14-gauge 304 stainless steel
- Continuously-welded seams ground smooth
- Cover secured by stainless steel captive screws threaded into sealed wells
- Closed-cell oil-resistant neoprene gasket
- Standard "4-way" pushbutton holes accept all brands of oil-tight pushbuttons, switches, and pilot lights
- External mounting plate on top and bottom of enclosure
- Grounding provisions provided
- PBSS Enclosures with 6 or more holes have internal detachable hinges to hold cover open during service, yet permit quick removal

## Finish

- Stainless steel cover and outside of enclosure have #3 intermediate polished finish

## Listings

- UL 508, 4, 4X, 12, and 13 [UL file E64791]



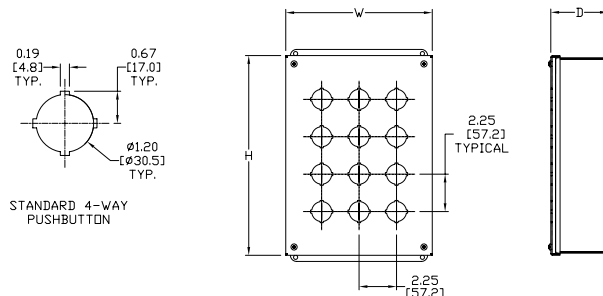
- NEMA/EEMAC 4, 4X, 12, and 13

## 30mm Pushbutton NEMA 4, 4X, 12, and 13 Stainless Steel Wall-Mount

304 Stainless Steel	Price	316L Stainless Steel	Price	# Holes	Enclosure Size HxWxD
<b>PBSS1</b>	\$148.00	<b>PBSS1A</b>	\$188.00	1	3.75 x 3.56 x 3.01 [95 x 90 x 76]
<b>PBSS2</b>	\$175.00	<b>PBSS2A</b>	\$223.00	2	6.00 x 3.56 x 3.01 [152 x 90 x 76]
<b>PBSS3</b>	\$202.00	<b>PBSS3A</b>	\$257.00	3	8.25 x 3.56 x 3.01 [230 x 90 x 76]
<b>PBSS4</b>	\$236.00	<b>PBSS4A</b>	\$291.00	4	10.50 x 3.56 x 3.01 [267 x 90 x 76]
<b>PBSS6</b>	\$310.00	<b>PBSS6A</b>	\$385.00	6	9.75 x 6.56 x 3.29 [248 x 167 x 84]
<b>PBSS9</b>	\$369.00	<b>PBSS9A</b>	\$518.00	9	9.75 x 8.81 x 3.29 [248 x 224 x 84]
<b>PBSS12</b>	\$422.00	<b>PBSS12A</b>	\$593.00	12	12.00 x 8.81 x 3.29 [305 x 224 x 84]

Note: Dimensions in inches [millimeters].

## Dimensions



PBSS HOLE ARRANGEMENTS

