

30mm Pushbutton NEMA 12 and 13 Slim Line Wall-Mount



Applications

Designed to hold all standard 30mm [1.18 in] brands of pushbuttons, switches and pilot lights. Provides protection from dirt, dust, oil and water. This slimline model is designed for conditions where enclosures must fit within very limited areas.

Finish

- ANSI 61 gray polyester powder inside and out over phosphatized surfaces

Listings

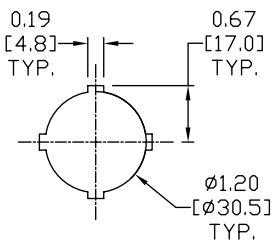
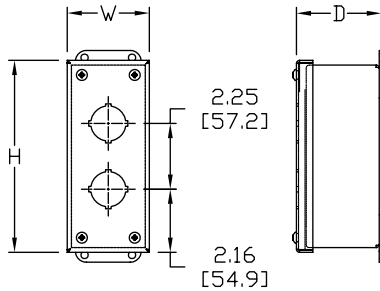
- UL 508 12 and 13 [UL File E64791]
- NEMA/EEMAC 12 and 13



Construction

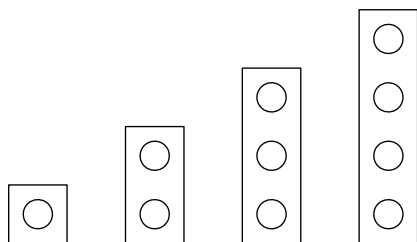
- Fabricated from 14-gauge steel
- Closed-cell oil-resistant neoprene gasket
- Continuously-welded seams ground smooth
- External mounting feet, top and bottom of enclosure
- Captivated cover screws thread into sealed wells
- Standard "4-way" pushbutton holes accept all brands of oil-tight pushbuttons, switches and pilot lights
- Grounding provisions provided

Dimensions



STANDARD 4-WAY
PUSHBUTTON

PB HOLE ARRANGEMENTS



PSL1 PSL2 PSL3 PSL4

Shipping Schedule

| | | | | |
|----------|------------|------------|-------------|-------------|
| Same day | 1 - 5 days | 1 - 7 days | 1 - 15 days | 1 - 20 days |
|----------|------------|------------|-------------|-------------|

Color indicates shipping lead time in business days.

30mm Pushbutton NEMA 12 and 13 Slim Line Wall-Mount

| Part Number | Price | # Holes | Size HxWxD |
|-------------|---------|---------|-------------------------------------|
| PSL1 | \$70.00 | 1 | 4.32 x 2.81 x 2.83 [110 x 71 x 72] |
| PSL2 | \$78.00 | 2 | 6.57 x 2.81 x 2.83 [167 x 71 x 72] |
| PSL3 | \$87.00 | 3 | 8.82 x 2.81 x 2.83 [224 x 71 x 72] |
| PSL4 | \$97.00 | 4 | 11.07 x 2.81 x 2.83 [281 x 71 x 72] |

Notes: Dimensions in inches [millimeters].