

30mm Pushbutton

NEMA 4, 12, and 13 Wall-Mount



Applications

Designed to hold all standard 30mm [1.18 in] brands of pushbuttons, switches and pilot lights. Provides protection from dirt, dust, oil and water.

Construction

- Bodies and doors fabricated from 14-gauge steel
- Closed-cell oil-resistant neoprene gasket
- Continuously-welded seams ground smooth
- External mounting feet, top and bottom of enclosure
- Captivated cover screws thread into sealed wells
- Standard "4-way" pushbutton holes accept all brands of oil-tight pushbuttons, switches and pilot lights
- Enclosures 9.50 x 6.25 x 3.09in [241 x 159 x 78mm] and larger have internal detachable hinges to hold cover open during wiring, yet permit quick removal
- Grounding provisions provided

Finish

- ANSI 61 gray polyester powder inside and out over phosphatized surfaces

Listings

- UL 508, 4, 12, and 13 [UL File E64791]
- NEMA/EEMAC 4, 12, and 13
- PB16(BC) and PB25(BC) meet NEMA 12 only



30mm Pushbutton NEMA 4, 12, and 13 Wall-Mount

Pushbutton Enclosure	Price	With Blank Cover	Price	# Holes	Enclosure Size HxWxD
PB1	\$75.00	PB1BC	\$75.00	1	3.76 x 3.56 x 3.14 [96 x 90 x 80]
PB2	\$86.00	PB2BC	\$88.00	2	6.01 x 3.56 x 3.10 [153 x 90 x 79]
PB3	\$96.00	PB3BC	\$99.00	3	8.26 x 3.56 x 3.10 [210 x 90 x 79]
PB4	\$108.00	PB4BC	\$109.00	4	10.51 x 3.56 x 3.10 [267 x 90 x 79]
PB4S	\$122.00	PB4SBC	\$105.00	4	7.51 x 6.56 x 3.38 [191 x 167 x 86]
PB5	\$118.00	PB5BC	\$118.00	5	12.76 x 3.56 x 3.10 [324 x 90 x 79]
PB6	\$147.00	PB6BC	\$139.00	6	9.76 x 6.56 x 3.38 [248 x 167 x 86]
PB6VL	\$132.00	PB6VLBC	\$132.00	6	15.01 x 3.56 x 3.10 [381 x 90 x 79]
PB8	\$159.00	PB8BC	\$155.00	8	20.51 x 3.56 x 3.10 [521 x 90 x 79]
PB9	\$163.00	PB9BC	\$144.00	9	9.76 x 8.81 x 3.38 [248 x 224 x 86]
PB10	\$180.00	PB10BC	\$167.00	10	25.01 x 3.56 x 3.14 [635 x 90 x 80]
PB12	\$183.00	PB12BC	\$183.00	12	12.01 x 8.81 x 3.38 [305 x 224 x 86]
PB16	\$210.00	PB16BC	\$206.00	16	12.01 x 11.06 x 3.38 [305 x 281 x 86]
PB25	\$260.00	PB25BC	\$259.00	25	14.26 x 13.31 x 3.38 [362 x 338 x 86]

Notes: Dimensions in inches [millimeters]. Letters in table correspond to letters on dimensional drawings. Letters in table correspond to letters on dimensional drawings.

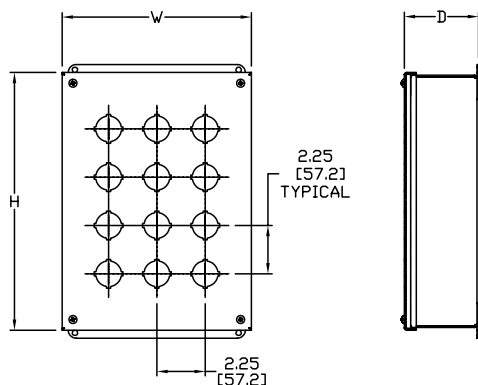
*Only meets N12.

30mm Pushbutton

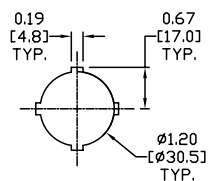
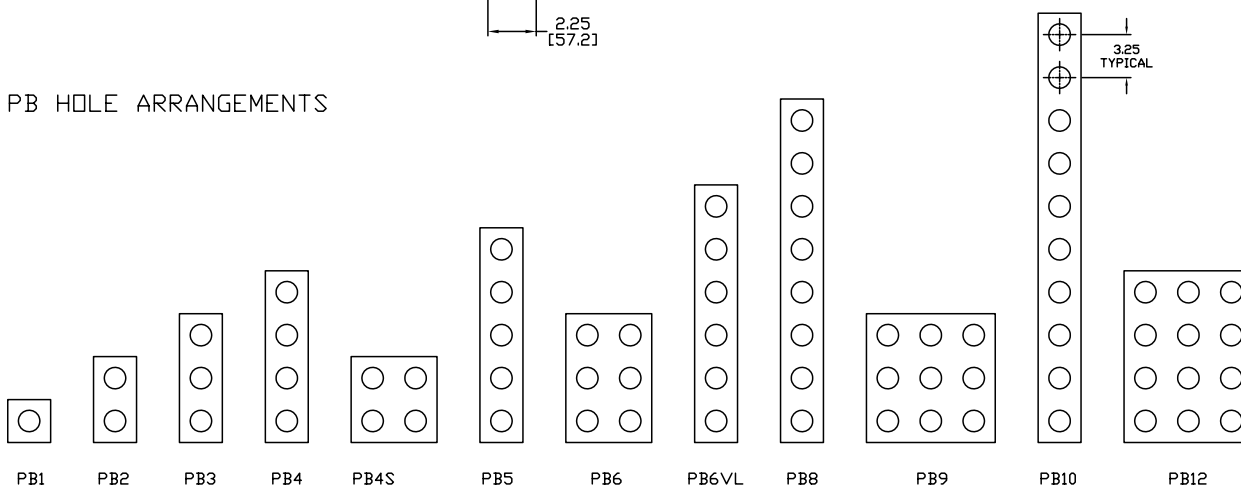
NEMA 4, 12, and 13 Wall-Mount



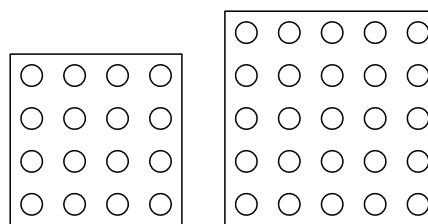
Dimensions



PB HOLE ARRANGEMENTS



STANDARD 4-WAY
PUSHBUTTON



PB16

PB25