

# NEMA 12 Two-Door Floor-Mount



## Application

Designed to protect electrical and electronic controls, components and instruments in typical industrial environments. Enclosure protects enclosed equipment from dust, dirt, oil and dripping water. These enclosures are used in machine tool applications for housing motor starters, drives, contactors, and PLCs, as well as a wide variety of other electrical and electronic equipment found in automotive, pulp and paper, wood products, textile, and similar industries.



## Construction

- Bodies and doors fabricated from 12-gauge cold-rolled steel
- Floor mounting feet fabricated from 10-gauge cold-rolled steel
- Continuously-welded seams ground smooth
- Heavy gauge continuous hinges support each door
- Special overlapping door design eliminates need for center post
- 3-point key-latching mechanism operated by oil-tight key-locking handle
- Standard 12 in [305 mm] floor kits are welded to bottom of enclosure
- Heavy-duty lifting eyes

## Finish

- ANSI 61 gray polyester powder light texture inside and out over phosphatized surfaces

## Listings

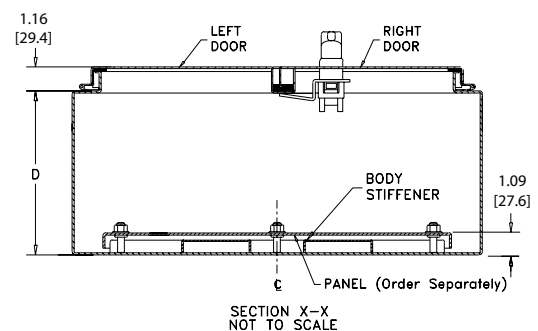
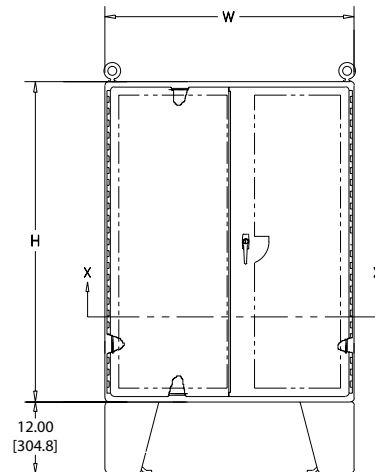
- UL 508, 12 [UL file E64791]
- Meets NEMA/EEMAC 12 requirements
- JIC EL-1-71



## Strong, rigid Construction with body stiffeners

- Doors sealed with poured-in-place polyurethane gasket
- Grounding provisions provided
- Collar studs provided for mounting optional subpanels
- Uses WAL4 series handle and WAEMKA4 replacement key

## Dimensions



# NEMA 12 Two-Door Floor-Mount



NEMA 12 Two-Door Floor-Mount			
Part Number	Price	Enclosure Size HxWxD (not incl. 12.00 [305] legs)	Painted Steel Subpanel
<b><u>N12544208</u></b>	\$1,794.00	54.13 x 42.12 x 9.23 [1375 x 1070 x 234]	<b><u>NPDD5442</u></b>
<b><u>N12604810</u></b>	\$2,450.00	60.13 x 48.12 x 11.16 [1527 x 1222 x 283]	<b><u>NPDD6048</u></b>
<b><u>N12604812</u></b>	\$2,527.00	60.13 x 48.12 x 13.16 [1527 x 1222 x 334]	<b><u>NPDD6048</u></b>
<b><u>N12604816</u></b>	\$2,678.00	60.12 x 48.13 x 17.17 [1527 x 1223 x 436]	<b><u>NPDD6048</u></b>
<b><u>N12606010</u></b>	\$2,824.00	60.12 x 60.13 x 11.17 [1527 x 1527 x 284]	<b><u>NPDD6060</u></b>
<b><u>N12606012</u></b>	\$2,915.00	60.13 x 60.13 x 13.17 [1527 x 1527 x 335]	<b><u>NPDD6060</u></b>
<b><u>N12606016</u></b>	\$3,030.00	60.13 x 60.13 x 17.17 [1527 x 1527 x 436]	<b><u>NPDD6060</u></b>
<b><u>N12726010</u></b>	\$3,232.00	72.13 x 60.12 x 11.17 [1832 x 1527 x 284]	<b><u>NPDD7260</u></b>
<b><u>N12726012</u></b>	\$3,236.00	72.12 x 60.13 x 13.17 [1832 x 1527 x 335]	<b><u>NPDD7260</u></b>
<b><u>N12726024</u></b>	\$3,919.00	72.12 x 60.13 x 25.17 [1832 x 1527 x 639]	<b><u>NPDD7260</u></b>
<b><u>N12727212</u></b>	\$3,603.00	72.13 x 72.13 x 13.17 [1832 x 1832 x 335]	<b><u>NPDD7272</u></b>
<b><u>N12727216</u></b>	\$3,922.00	72.12 x 72.12 x 17.17 [1832 x 1832 x 436]	<b><u>NPDD7272</u></b>
Notes: Subpanels must be ordered separately. Dimensions in inches [millimeters]. Letters in table correspond to letters on dimensional drawings.			

# Enclosure Subpanels



## Subpanels for Two-Door Floor-Mount Enclosures

- Subpanels are fabricated from 10-gauge carbon steel
- Painted steel subpanels are painted white polyester powder over phosphatized surfaces
- Galvanized subpanels have a conductive finish (no paint)
- Subpanels are used in NEMA 12 double-door floor-mount enclosures and some double-door wall-mount enclosures



Subpanels for Two-door Floor-Mount Enclosures			
Painted Steel	Price	Nominal Enclosure Size HxW*	Subpanel Size AxB
<a href="#"><u>NPDD4242</u></a>	\$260.00	42 x 42	39.00 x 39.00 [991 x 991]
<a href="#"><u>NPDD4842</u></a>	\$294.00	48 x 42	45.00 x 39.00 [1143 x 991]
<a href="#"><u>NPDD4848</u></a>	\$352.00	48 x 48	44.00 x 44.00 [1118 x 1118]
<a href="#"><u>NPDD5442</u></a>	\$314.00	54 x 42	50.00 x 38.00 [1270 x 965]
<a href="#"><u>NPDD6048</u></a>	\$427.00	60 x 48	44.00 x 56.00 [1118 x 1422]
<a href="#"><u>NPDD6060</u></a>	\$527.00	60 x 60	56.00 x 56.00 [1422 x 1422]
<a href="#"><u>NPDD7260</u></a>	\$628.00	72 x 60	56.00 x 68.00 [1422 x 1727]
<a href="#"><u>NPDD7272</u></a>	\$750.00	72 x 72	68.00 x 68.00 [1727 x 1727]
Notes: Dimensions in inches [millimeters]. Letters in table correspond to letters on dimensional drawing. *Some floor-mount enclosures may be up to 2 in [51 mm] taller than height listed in this table. Disconnect enclosures will be up to 2 in [51 mm] wider than width dimensions listed in this table.			

## Dimensions

