



Series 70 - Solenoid Valves

Metal Work Series 70 solenoid valves are an excellent choice for many pneumatic automation applications. They can be used individually or built into a bank with optional manifolds.

Features

- Single and double solenoid models. Coils purchased separately
- 3-port (3-way), 2-position, 5-port (4-way), 2-position, and 5-port (4-way), 3-position configurations
- 1/8", 1/4", 3/8" and 1/2" NPT



Part No. 7010021100U



Part No. 7030021200U



See www.AutomationDirect.com for a wide variety of fitting options

| Metal Work Series 70 - 1/8" NPT Port Solenoid Valves | | | | | | | | |
|---|--|--------------------------------|---------------------|----------------------------|---------------------|---|--|---|
| Model | 7010020100U | 7010020200U | 7010020400U | 7010021100U | 7010021200U | 7010022100U | 7010022200U | 7010022300U |
| Price | \$76.00 | \$50.00 | \$48.50 | \$56.00 | \$75.00 | \$86.00 | \$86.00 | \$86.00 |
| Drawing Link | PDF | PDF | PDF | PDF | PDF | PDF | PDF | PDF |
| Weight (lb) | 0.31 | 0.24 | | 0.31 | 0.38 | | | |
| Manufacturer Specs | PDF | PDF | PDF | PDF | PDF | PDF | PDF | PDF |
| Valve Type | 3-port (3-way), 2-position | | | 5-port (4-way), 2-position | | 5-port (4-way), 3-position, center closed | 5-port (4-way), 3-position, center exhaust | 5-port (4-way), 3-position, center pressure |
| Valve Configuration | N/A | N.C. | N.O. | N/A | | | | |
| Operator | Solenoid | | | | | | | |
| Acting | Double solenoid | Single solenoid, spring return | | | Double solenoid | | | |
| Inlet Port Size | 1/8" FNPT | | | | | | | |
| Outlet Port Size | 1/8" FNPT | | | | | | | |
| Flow (Cv) | 0.55 | | | | | | | |
| Media | Filtered air without lubrication; lubrication, if used, must be continuous | | | | | | | |
| Pressure Range | 14.5 to 145 psi | 36.3 to 145 psi | | | 14.5 to 145 psi | 36.3 to 145 psi | | |
| Temperature | 14°F to 140°F (-10°C to 60°C) | | | | | | | |
| Lubrication | ISO and UNI FD 22 | | | | | | | |
| Life Cycle | 50 million cycles | | | | | | | |
| Specifications When Used With Metal Work Coils (Sold Separately) | | | | | | | | |
| Voltage (± 10%) | 12; 24 VDC - 24; 110; 220V AC 50/60Hz | | | | | | | |
| Power Consumption | DC Coils: 2W ; AC Coils: 3.5 VA | | | | | | | |
| Insulation | Class F | | | | | | | |
| Actuation Response Time (TRA) / Reset Response Time (TRR) at 87 psi | 20/20 ms | 15/35 ms | | | 20/20 ms | 15/35 ms | | |
| Protection | IP 65 with connector | | | | | | | |
| Connection | 11mm DIN style wiring plug | | | | | | | |
| Agency Approvals* | Coils have CE mark | | | | | | | |

* To obtain the most current agency approval information, see the Agency Approval Checklist section on the specific part number's web page.

For additional details see manufacturer's technical specifications, manuals and inserts (where applicable).



Series 70 - Solenoid Valves

| Metal Work Series 70 - 1/4" NPT Port Solenoid Valves | | | | | | | | |
|---|--|--------------------------------|---------------------|----------------------------|---------------------|---|--|---|
| Model | 7020020100U | 7020020200U | 7020020400U | 7020021100U | 7020021200U | 7020022100U | 7020022200U | 7020022300U |
| Price | \$78.00 | \$58.00 | \$55.00 | \$62.00 | \$79.00 | \$99.00 | \$99.00 | \$99.00 |
| Drawing Link | PDF | PDF | PDF | PDF | PDF | PDF | PDF | PDF |
| Weight (lb) | 0.43 | 0.35 | | 0.45 | 0.53 | 0.58 | 0.58 | 0.58 |
| Manufacturer Specs | PDF | PDF | PDF | PDF | PDF | PDF | PDF | PDF |
| Valve Type | 3-port (3-way), 2-position, single solenoid, spring return | | | 5-port (4-way), 2-position | | 5-port (4-way), 3-position, center closed | 5-port (4-way), 3-position, center exhaust | 5-port (4-way), 3-position, center pressure |
| Valve Configuration | N/A | N.C. | N.O. | N/A | | | | |
| Operator | Solenoid | | | | | | | |
| Acting | Double solenoid | Signle solenoid, spring return | | | Double solenoid | | | |
| Inlet Port Size | 1/4" FNPT | | | | | | | |
| Outlet Port Size | 1/4" FNPT | | | | | | | |
| Flow (Cv) | 1.1 | | | | | | | |
| Media | Filtered air without lubrication; lubrication, if used, must be continuous | | | | | | | |
| Pressure Range | 14.5 to 145 psi | 36.3 to 145 psi | | | 14.5 to 145 psi | 36.3 to 145 psi | | |
| Temperature | 14°F to 140°F (-10°C to 60°C) | | | | | | | |
| Lubrication | ISO and UNI FD 22 | | | | | | | |
| Life Cycle | 50 million cycles | | | | | | | |
| Specifications When Used With Metal Work Coils (Sold Separately) | | | | | | | | |
| Voltage (± 10%) | 12; 24 VDC - 24; 110; 220V AC 50/60Hz | | | | | | | |
| Power Consumption | DC Coils: 2W ; AC Coils: 3.5 VA | | | | | | | |
| Insulation | Class F | | | | | | | |
| Actuation Response Time (TRA) / Reset Response Time (TRR) at 87 psi | 21/21 ms | 19/45 ms | | | 21/21 ms | 19/45 ms | | |
| Protection | IP 65 with connector | | | | | | | |
| Connection | 11mm DIN style wiring plug | | | | | | | |
| Agency Approvals* | Coils have CE mark | | | | | | | |

* To obtain the most current agency approval information, see the Agency Approval Checklist section on the specific part number's web page.

For additional details see manufacturer's technical specifications, manuals and inserts (where applicable).



Series 70 - Solenoid Valves

| Metal Work Series 70 - 3/8” NPT Port Solenoid Valves | | | | | | | | |
|---|--|--------------------------------|---------------------|----------------------------|---------------------|---|--|---|
| Model | 7040020100U | 7040020200U | 7040020400U | 7040021100U | 7040021200U | 7040022100U | 7040022200U | 7040022300U |
| Price | \$89.00 | \$69.00 | \$69.00 | \$73.00 | \$95.00 | \$118.00 | \$118.00 | \$118.00 |
| Drawing Link | PDF | PDF | PDF | PDF | PDF | PDF | PDF | PDF |
| Weight (lb) | 0.69 | 0.58 | | 0.82 | 0.89 | 1.06 | 1.06 | |
| Manufacturer Specs | PDF | PDF | PDF | PDF | PDF | PDF | PDF | PDF |
| Valve Type | 3-port (3-way), 2-position | | | 5-port (4-way), 2-position | | 5-port (4-way), 3-position, center closed | 5-port (4-way), 3-position, center exhaust | 5-port (4-way), 3-position, center pressure |
| Valve Configuration | N/A | N.C. | N.O. | N/A | | | | |
| Operator | Solenoid | | | | | | | |
| Acting | Double solenoid | Signle solenoid, spring return | | | Double solenoid | | | |
| Inlet Port Size | 3/8" FNPT | | | | | | | |
| Outlet Port Size | 3/8" FNPT | | | | | | | |
| Flow (Cv) | 2.1 | | | | | | | |
| Media | Filtered air without lubrication; lubrication, if used, must be continuous | | | | | | | |
| Pressure Range | 14.5 to 145 psi | 36.3 to 145 psi | | | 14.5 to 145 psi | 36.3 to 145 psi | | |
| Temperature | 14°F to 140°F (-10°C to 60°C) | | | | | | | |
| Lubrication | ISO and UNI FD 22 | | | | | | | |
| Life Cycle | 50 million cycles | | | | | | | |
| Specifications When Used With Metal Work Coils (Sold Separately) | | | | | | | | |
| Voltage (± 10%) | 12; 24 VDC - 24; 110; 220V AC 50/60Hz | | | | | | | |
| Power Consumption | DC Coils: 2W ; AC Coils: 3.5 VA | | | | | | | |
| Insulation | Class F | | | | | | | |
| Actuation Response Time (TRA) / Reset Response Time (TRR) at 87 psi | 18/18 ms | 21/72 ms | | | 18/18 ms | 21/72 ms | | |
| Protection | IP 65 with connector | | | | | | | |
| Connection | 11mm DIN style wiring plug | | | | | | | |
| Agency Approvals* | Coils have CE mark | | | | | | | |

* To obtain the most current agency approval information, see the Agency Approval Checklist section on the specific part number's web page.

For additional details see manufacturer's technical specifications, manuals and inserts (where applicable).



Series 70 - Solenoid Valves

| Metal Work Series 70 - 1/2” NPT Port Solenoid Valves | | | | | | | | |
|---|--|--------------------------------|-----------------------------|-----------------------------|-----------------------------|---|--|---|
| Model | 7030020100U | 7030020200U | 7030020400U | 7030021100U | 7030021200U | 7030022100U | 7030022200U | 7030022300U |
| Price | \$162.00 | \$131.00 | \$131.00 | \$151.00 | \$183.00 | \$195.00 | \$195.00 | \$195.00 |
| Drawing Link | PDF | PDF | PDF | PDF | PDF | PDF | PDF | PDF |
| Weight (lb) | 1.64 | 1.51 | | 1.95 | 2.02 | 2.75 | | |
| Manufacturer Specs | PDF | PDF | PDF | PDF | PDF | PDF | PDF | PDF |
| Valve Type | 3-port (3-way), 2-position | | | 5-port (4-way), 2-position | | 5-port (4-way), 3-position, center closed | 5-port (4-way), 3-position, center exhaust | 5-port (4-way), 3-position, center pressure |
| Valve Configuration | N/A | N.C. | N.O. | N/A | | | | |
| Operator | Solenoid | | | | | | | |
| Acting | Double solenoid | Signle solenoid, spring return | | | Double solenoid | | | |
| Inlet Port Size | 1/2” FNPT | | | | | | | |
| Outlet Port Size | 1/2” FNPT | | | | | | | |
| Flow (Cv) | 4.6 | | | | | | | |
| Media | Filtered air without lubrication; lubrication, if used, must be continuous | | | | | | | |
| Pressure Range | 14.5 to 145 psi | 36.3 to 145 psi | | | 14.5 to 145 psi | 36.3 to 145 psi | | |
| Temperature | 14°F to 140°F (-10°C to 60°C) | | | | | | | |
| Lubrication | ISO and UNI FD 22 | | | | | | | |
| Life Cycle | 50 million cycles | | | | | | | |
| Specifications When Used With Metal Work Coils (Sold Separately) | | | | | | | | |
| Voltage (± 10%) | 12; 24 VDC - 24; 110; 220V AC 50/60Hz | | | | | | | |
| Power Consumption | DC Coils: 2W ; AC Coils: 3.5 VA | | | | | | | |
| Insulation | Class F | | | | | | | |
| Actuation Response Time (TRA) / Reset Response Time (TRR) at 87 psi | 25/25 ms | 36/100 ms | | | 25/25 ms | 36/100 ms | | |
| Protection | IP 65 with connector | | | | | | | |
| Connection | 11mm DIN style wiring plug | | | | | | | |
| Agency Approvals* | Coils have CE mark | | | | | | | |

* To obtain the most current agency approval information, see the Agency Approval Checklist section on the specific part number's web page.

For additional details see manufacturer's technical specifications, manuals and inserts (where applicable).



Series 70 - Valve Components

Metal Work Series 70 valves is one of the most popular lines of valves produced in Italy by Metal Work. They feature heavy duty construction and many options to choose from.

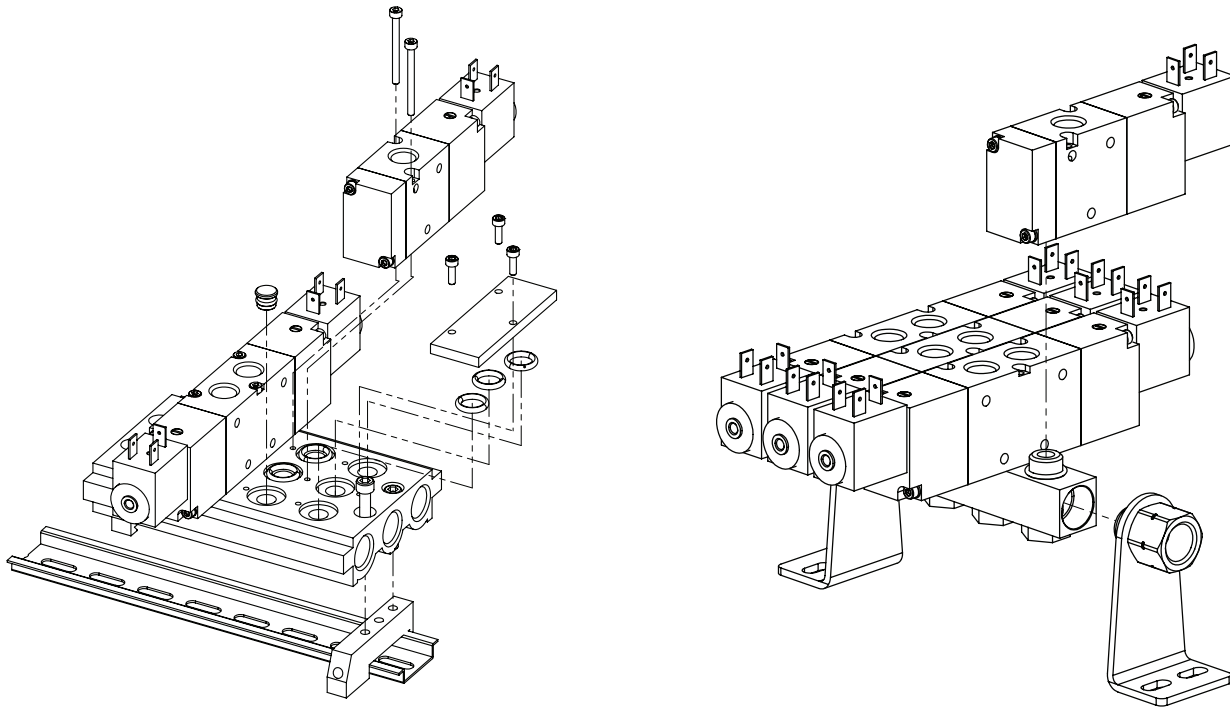
Features

- Most styles available in four sizes
- 3-port (3-way) and 5-port (4-way) body-ported valves
- 2-position and 3-position operation
- Manual, mechanically operated, air pilot and solenoid valves

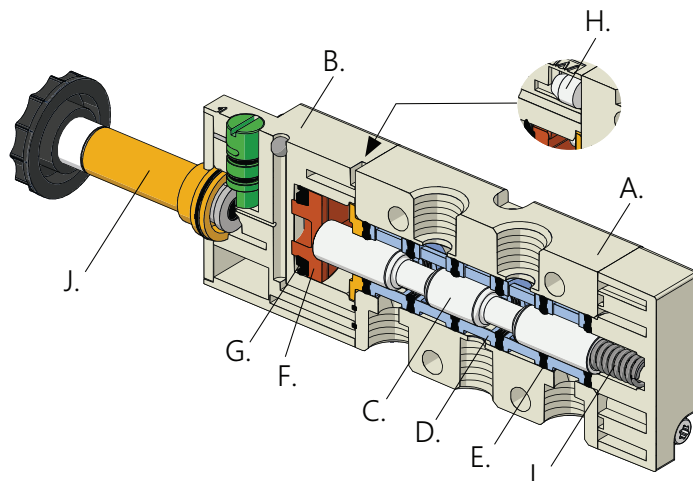


Scan or click the above QR code for the Metal Work Series 70 Instructions Insert

Valve Base Assembly Examples



- A. VALVE BODY: Aluminum
- B. CONTROL/END CAP: Plastic
- C. SPOOL: chemically Nickel-plated aluminum
- D. SPOOL GUIDES: Plastic
- E. GASKETS: NBR
- F. PISTONS: Hostaform®
- G. PISTON GASKET: NBR
- H. FILTER: Sintered bronze
- I. SPRINGS: Spring steel
- J. OPERATOR: Brass pipe - Stainless steel core





Series 70 - Compact Valve Manifolds

Metal Work series 70 compact valve manifolds are a space-saving choice when using several Series 70 air pilot or solenoid valves.



Part No. 0221000200U



Part No. 0221000700U

Features

- 2 to 7-station manifolds
- Fit 1/8" or 1/4" NPT valves
- 3 heights of mounting bracket sold separately
- Work with all Series 70 valves



See www.AutomationDirect.com for a wide variety of fitting options

Metal Work Series 70 - Compact Valve Manifolds

| Part No. | Description | Drawing Link | Price | Weight (lb) | Manufacturer Specs |
|-----------------------------|--|---------------------|---------|-------------|---------------------|
| 0221000200U | Metal Work air compact valve manifold, aluminum, white, 145 psi (10 bar) maximum operating pressure, (2) stations, 1/4in female NPT inlet(s). For use with 1/8in NPT Series 70 valves. | PDF | \$12.00 | 0.16 | PDF |
| 0221000300U | Metal Work air compact valve manifold, aluminum, white, 145 psi (10 bar) maximum operating pressure, (3) stations, 1/4in female NPT inlet(s). For use with 1/8in NPT Series 70 valves. | PDF | \$13.00 | 0.22 | PDF |
| 0221000400U | Metal Work air compact valve manifold, aluminum, white, 145 psi (10 bar) maximum operating pressure, (4) stations, 1/4in female NPT inlet(s). For use with 1/8in NPT Series 70 valves. | PDF | \$16.00 | 0.29 | PDF |
| 0221000500U | Metal Work air compact valve manifold, aluminum, white, 145 psi (10 bar) maximum operating pressure, (5) stations, 1/4in female NPT inlet(s). For use with 1/8in NPT Series 70 valves. | PDF | \$25.00 | 0.36 | PDF |
| 0221000600U | Metal Work air compact valve manifold, aluminum, white, 145 psi (10 bar) maximum operating pressure, (6) stations, 1/4in female NPT inlet(s). For use with 1/8in NPT Series 70 valves. | PDF | \$31.50 | 0.43 | PDF |
| 0221000700U | Metal Work air compact valve manifold, aluminum, white, 145 psi (10 bar) maximum operating pressure, (7) stations, 1/4in female NPT inlet(s). For use with 1/8in NPT Series 70 valves. | PDF | \$39.00 | 0.5 | PDF |
| 0222000200U | Metal Work air compact valve manifold, aluminum, white, 145 psi (10 bar) maximum operating pressure, (2) stations, 3/8in female NPT inlet(s). For use with 1/4in NPT Series 70 valves. | PDF | \$13.00 | 0.2 | PDF |
| 0222000300U | Metal Work air compact valve manifold, aluminum, white, 145 psi (10 bar) maximum operating pressure, (3) stations, 3/8in female NPT inlet(s). For use with 1/4in NPT Series 70 valves. | PDF | \$18.00 | 0.29 | PDF |
| 0222000400U | Metal Work air compact valve manifold, aluminum, white, 145 psi (10 bar) maximum operating pressure, (4) stations, 3/8in female NPT inlet(s). For use with 1/4in NPT Series 70 valves. | PDF | \$21.50 | 0.38 | PDF |
| 0222000500U | Metal Work air compact valve manifold, aluminum, white, 145 psi (10 bar) maximum operating pressure, (5) stations, 3/8in female NPT inlet(s). For use with 1/4in NPT Series 70 valves. | PDF | \$27.00 | 0.47 | PDF |
| 0222000600U | Metal Work air compact valve manifold, aluminum, white, 145 psi (10 bar) maximum operating pressure, (6) stations, 3/8in female NPT inlet(s). For use with 1/4in NPT Series 70 valves. | PDF | \$32.50 | 0.56 | PDF |
| 0222000700U | Metal Work air compact valve manifold, aluminum, white, 145 psi (10 bar) maximum operating pressure, (7) stations, 3/8in female NPT inlet(s). For use with 1/4in NPT Series 70 valves. | PDF | \$31.50 | 0.66 | PDF |

For additional details see manufacturer's technical specifications, manuals and inserts (where applicable).



Series 70 - Compact Valve Manifold Accessories

Metal Work series 70 compact valve manifold accessories; for use on Series 70 air pilot or solenoid valves.



Part No. 0221000191U



Part No. 0222000191U

Features

- Fit 1/8" or 1/4" NPT valves
- 3 heights of mounting bracket sold separately



See www.AutomationDirect.com for a wide variety of fitting options

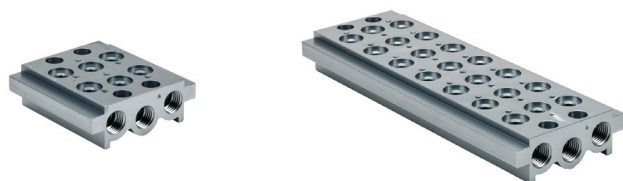
Metal Work Series 70 - Compact Valve Manifold Accessories

| Part No. | Description | Drawing Link | Price | Weight (lb) | Manufacturer Specs |
|------------------------------------|--|----------------------------|---------|-------------|----------------------------|
| <u>0221000190U</u> | Metal Work bracket, 120mm. For use with Series 70 1/8in compact manifolds. | <u>PDF</u> | \$15.00 | 0.68 | <u>PDF</u> |
| <u>0221000191U</u> | Metal Work bracket, 60mm. For use with Series 70 1/8in compact manifolds. | <u>PDF</u> | \$11.50 | 0.49 | <u>PDF</u> |
| <u>0221000192U</u> | Metal Work bracket, 30mm. For use with Series 70 1/8in compact manifolds. | <u>PDF</u> | \$11.00 | 0.42 | <u>PDF</u> |
| <u>0222000190U</u> | Metal Work bracket, 120mm. For use with Series 70 1/4in compact manifolds. | <u>PDF</u> | \$12.50 | 0.75 | <u>PDF</u> |
| <u>0222000191U</u> | Metal Work bracket, 60mm. For use with Series 70 1/4in compact manifolds. | <u>PDF</u> | \$14.50 | 0.55 | <u>PDF</u> |
| <u>0222000192U</u> | Metal Work bracket, 30mm. For use with Series 70 1/4in compact manifolds. | <u>PDF</u> | \$11.50 | 0.48 | <u>PDF</u> |

For additional details see manufacturer's technical specifications, manuals and inserts (where applicable).



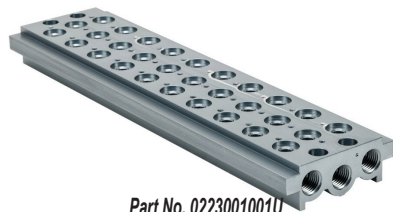
Series 70 - Valve Manifolds



Part No. 0223000201U



Part No. 0223000701U



Part No. 0223001001U

Metal Work Series 70 valve manifolds are an excellent choice for installing several Series 70 air pilot or solenoid valves in a pneumatic system.

Features

- 2 to 10 station manifolds
- Fit 1/8" or 1/4" NPT valves
- 3-port and 5-port valves can be mixed on the same manifold
- Blanking plates for future expansion



See www.AutomationDirect.com for a wide variety of fitting options

Metal Work Series 70 - Valve Manifolds

| Part No. | Description | Drawing Link | Price | Weight (lb) | Manufacturer Specs |
|-----------------------------|---|---------------------|----------|-------------|---------------------|
| 0223000201U | Metal Work air valve manifold, aluminum, silver, 145 psi (10 bar) maximum operating pressure, (2) stations, 1/4in female NPT inlet(s), 1/4in female NPT exhaust(s). For use with 1/8in NPT Series 70 valves. | PDF | \$39.00 | 0.51 | PDF |
| 0223000301U | Metal Work air valve manifold, aluminum, silver, 145 psi (10 bar) maximum operating pressure, (3) stations, 1/4in female NPT inlet(s), 1/4in female NPT exhaust(s). For use with 1/8in NPT Series 70 valves. | PDF | \$47.50 | 0.71 | PDF |
| 0223000401U | Metal Work air valve manifold, aluminum, silver, 145 psi (10 bar) maximum operating pressure, (4) stations, 1/4in female NPT inlet(s), 1/4in female NPT exhaust(s). For use with 1/8in NPT Series 70 valves. | PDF | \$56.00 | 0.89 | PDF |
| 0223000501U | Metal Work air valve manifold, aluminum, silver, 145 psi (10 bar) maximum operating pressure, (5) stations, 1/4in female NPT inlet(s), 1/4in female NPT exhaust(s). For use with 1/8in NPT Series 70 valves. | PDF | \$64.00 | 1.08 | PDF |
| 0223000601U | Metal Work air valve manifold, aluminum, silver, 145 psi (10 bar) maximum operating pressure, (6) stations, 1/4in female NPT inlet(s), 1/4in female NPT exhaust(s). For use with 1/8in NPT Series 70 valves. | PDF | \$77.00 | 1.35 | PDF |
| 0223000701U | Metal Work air valve manifold, aluminum, silver, 145 psi (10 bar) maximum operating pressure, (7) stations, 1/4in female NPT inlet(s), 1/4in female NPT exhaust(s). For use with 1/8in NPT Series 70 valves. | PDF | \$85.00 | 1.46 | PDF |
| 0223000801U | Metal Work air valve manifold, aluminum, silver, 145 psi (10 bar) maximum operating pressure, (8) stations, 1/4in female NPT inlet(s), 1/4in female NPT exhaust(s). For use with 1/8in NPT Series 70 valves. | PDF | \$96.00 | 1.64 | PDF |
| 0223000901U | Metal Work air valve manifold, aluminum, silver, 145 psi (10 bar) maximum operating pressure, (9) stations, 1/4in female NPT inlet(s), 1/4in female NPT exhaust(s). For use with 1/8in NPT Series 70 valves. | PDF | \$104.00 | 1.83 | PDF |
| 0223001001U | Metal Work air valve manifold, aluminum, silver, 145 psi (10 bar) maximum operating pressure, (10) stations, 1/4in female NPT inlet(s), 1/4in female NPT exhaust(s). For use with 1/8in NPT Series 70 valves. | PDF | \$130.00 | 2.02 | PDF |
| 0224000201U | Metal Work air valve manifold, aluminum, silver, 145 psi (10 bar) maximum operating pressure, (2) stations, 3/8in female NPT inlet(s), 3/8in female NPT exhaust(s). For use with 1/4in NPT Series 70 valves. | PDF | \$43.50 | 0.65 | PDF |
| 0224000301U | Metal Work air valve manifold, aluminum, silver, 145 psi (10 bar) maximum operating pressure, (3) stations, 3/8in female NPT inlet(s), 3/8in female NPT exhaust(s). For use with 1/4in NPT Series 70 valves. | PDF | \$53.00 | 0.88 | PDF |
| 0224000401U | Metal Work air valve manifold, aluminum, silver, 145 psi (10 bar) maximum operating pressure, (4) stations, 3/8in female NPT inlet(s), 3/8in female NPT exhaust(s). For use with 1/4in NPT Series 70 valves. | PDF | \$63.00 | 1.11 | PDF |
| 0224000501U | Metal Work air valve manifold, aluminum, silver, 145 psi (10 bar) maximum operating pressure, (5) stations, 3/8in female NPT inlet(s), 3/8in female NPT exhaust(s). For use with 1/4in NPT Series 70 valves. | PDF | \$76.00 | 1.34 | PDF |
| 0224000601U | Metal Work air valve manifold, aluminum, silver, 145 psi (10 bar) maximum operating pressure, (6) stations, 3/8in female NPT inlet(s), 3/8in female NPT exhaust(s). For use with 1/4in NPT Series 70 valves. | PDF | \$86.00 | 1.57 | PDF |

For additional details see manufacturer's technical specifications, manuals and inserts (where applicable).



Series 70 - Valve Manifolds

| Metal Work Series 70 - Valve Manifolds | | | | | |
|--|---|----------------------------|----------|-------------|----------------------------|
| Part No. | Description | Drawing Link | Price | Weight (lb) | Manufacturer Specs |
| <u>0224000701U</u> | Metal Work air valve manifold, aluminum, silver, 145 psi (10 bar) maximum operating pressure, (7) stations, 3/8in female NPT inlet(s), 3/8in female NPT exhaust(s). For use with 1/4in NPT Series 70 valves. | <u>PDF</u> | \$99.00 | 1.81 | <u>PDF</u> |
| <u>0224000801U</u> | Metal Work air valve manifold, aluminum, silver, 145 psi (10 bar) maximum operating pressure, (8) stations, 3/8in female NPT inlet(s), 3/8in female NPT exhaust(s). For use with 1/4in NPT Series 70 valves. | <u>PDF</u> | \$116.00 | 2.01 | <u>PDF</u> |
| <u>0224000901U</u> | Metal Work air valve manifold, aluminum, silver, 145 psi (10 bar) maximum operating pressure, (9) stations, 3/8in female NPT inlet(s), 3/8in female NPT exhaust(s). For use with 1/4in NPT Series 70 valves. | <u>PDF</u> | \$141.00 | 2.27 | <u>PDF</u> |
| <u>0224001001U</u> | Metal Work air valve manifold, aluminum, silver, 145 psi (10 bar) maximum operating pressure, (10) stations, 3/8in female NPT inlet(s), 3/8in female NPT exhaust(s). For use with 1/4in NPT Series 70 valves. | <u>PDF</u> | \$176.00 | 2.5 | <u>PDF</u> |

For additional details see manufacturer's technical specifications, manuals and inserts (where applicable).



Series 70 - Valve Manifold Accessories



Part No. 0226004001



Part No. 0226004500



Part No. 0226004600



Part No. 0226004701



See www.AutomationDirect.com for a wide variety of fitting options



Metal Work Series 70 - Valve Accessories

| Part No. | Description | Drawing Link | Price | Weight (lb) | Manufacturer Specs |
|-----------------------------------|---|----------------------------|--------|-------------|----------------------------|
| <u>0226004001</u> | Metal Work manifold port plug, for use with Series 70 1/8in manifolds. | <u>PDF</u> | \$1.00 | 0.01 | <u>PDF</u> |
| <u>0226004500</u> | Metal Work blanking plate, for use with Series 70 1/8in manifolds. Mounting hardware included. | <u>PDF</u> | \$2.50 | 0.05 | <u>PDF</u> |
| <u>0226004600</u> | Metal Work DIN rail adapter, for use with Series 70 1/8in manifolds. | <u>PDF</u> | \$2.50 | 0.08 | <u>PDF</u> |
| <u>0226004701</u> | Metal Work gasket kit, for use with Series 70 1/8in manifolds, includes (3) o-rings and (3) screws. | <u>PDF</u> | \$1.50 | 0.02 | <u>PDF</u> |
| <u>0226005001</u> | Metal Work manifold port plug, for use with Series 70 1/4in manifolds. | <u>PDF</u> | \$1.00 | 0.02 | <u>PDF</u> |
| <u>0226005500</u> | Metal Work blanking plate, for use with Series 70 1/4in manifolds. Mounting hardware included. | <u>PDF</u> | \$2.75 | 0.06 | <u>PDF</u> |
| <u>0226005600</u> | Metal Work DIN rail adapter, for use with Series 70 1/4in manifolds. | <u>PDF</u> | \$3.00 | 0.08 | <u>PDF</u> |
| <u>0226005701</u> | Metal Work gasket kit, for use with Series 70 1/4in manifolds, includes (3) o-rings and (3) screws. | <u>PDF</u> | \$1.50 | 0.02 | <u>PDF</u> |



Accessories



| Metal Work Syntesi Accessories | | | | | | |
|---|----------------------------------|---------|---|----------------------------|----------------------------|--------------|
| Item Photo | Part No. | Price | Description | Drawing Link | Manufacturer Specs | Weight (lbs) |
|  | <u>88257G4</u> | \$11.75 | Metal Work solenoid coil, 12 VDC, 2W, 11mm DIN style wiring plug. For use with Metal Work valves. | <u>PDF</u> | <u>PDF</u> | 0.10 |
| | <u>88257G5</u> | \$11.75 | Metal Work solenoid coil, 24 VDC, 2W, 11mm DIN style wiring plug. For use with Metal Work valves. | <u>PDF</u> | <u>PDF</u> | 0.10 |
| | <u>88257G6</u> | \$11.75 | Metal Work solenoid coil, 24 VAC, 3.5VA, 11mm DIN style wiring plug. For use with Metal Work valves. | <u>PDF</u> | <u>PDF</u> | 0.10 |
| | <u>88257G7</u> | \$11.75 | Metal Work solenoid coil, 110 VAC, 3.5VA, 11mm DIN style wiring plug. For use with Metal Work valves. | <u>PDF</u> | <u>PDF</u> | 0.10 |
| | <u>88257G8</u> | \$11.75 | Metal Work solenoid coil, 240 VAC, 3.5VA, 11mm DIN style wiring plug. For use with Metal Work valves. | <u>PDF</u> | <u>PDF</u> | 0.10 |
|  | <u>TAP-ACC21</u> | \$11.00 | NITRA padlock, replacement, brass. For use with TAP unit. | N/A | N/A | 0.5 |