

## Non-Metallic Two-Piece Split Tubing EWT-PA Series

### Overview

The EWT-PA series non-metallic two piece split tubing consists of two separate corrugated tubes, one inside the other, which allows the tubing to be opened and reassembled at any time. This tubing is perfect for working with terminated cabling, wires, and retrofitting applications where pulling cable through tubing is impossible to do. The dual-overlapping tubes increase mechanical protection and eliminate unintentional exposure of the cabling bundle inside.

### Features

- Made of specially modified polyamide 6
- Facilitates mounting of pre-assembled cables
- Split version simplifies addition and removal of new cables/lines anytime
- Simplifies repairs to existing systems
- High crush resistance, per IEC EN 61386: >900N
- Halogen, phosphor, and cadmium-free.
- Flammability: HB per UL94
- Operating temperature: -40 to 248°F [-40 to 120°C]


**831000**

### Non-Metallic Two-Piece Split Tubing - EWT-PA Series Selection Chart

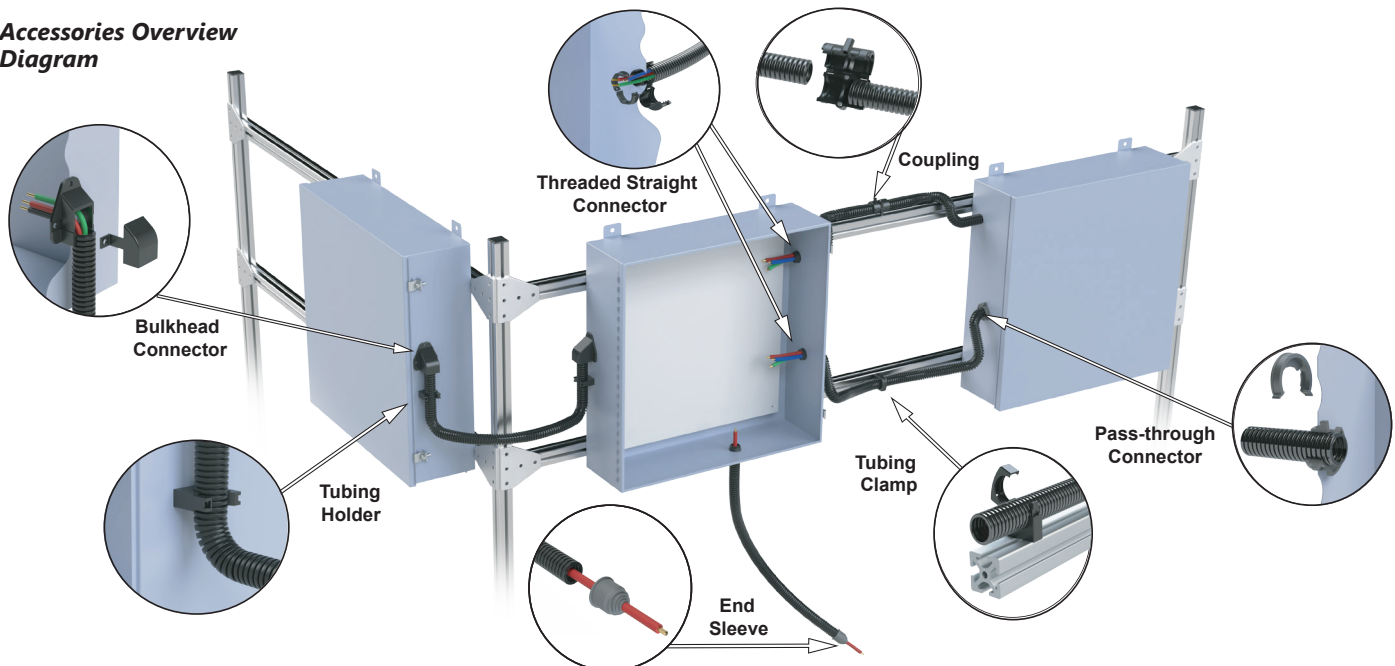
Part Number	Price	Quantity	Size	Coil Length m [ft]	Bend Radius mm [in]	Color	Material	Drawing Links
<a href="#">831000</a>	\$59.00	1	M12/P09	10 [32.8]	75 [2.95]	Black	Modified polyamide 6	<a href="#">PDF</a>
<a href="#">831002</a>	\$132.00	1	M12/P09	25 [82]				<a href="#">PDF</a>
<a href="#">831004</a>	\$94.00	1	M16/P11	10 [32.8]	100 [3.94]			<a href="#">PDF</a>
<a href="#">831006</a>	\$217.00	1	M16/P11	25 [82]				<a href="#">PDF</a>
<a href="#">831008</a>	\$116.00	1	M20/P16	10 [32.8]	120 [4.72]			<a href="#">PDF</a>
<a href="#">831010</a>	\$274.00	1	M20/P16	25 [82]				<a href="#">PDF</a>
<a href="#">832500</a>	\$149.00	1	M25/P21	10 [32.8]	170 [6.69]			<a href="#">PDF</a>
<a href="#">832502</a>	\$354.00	1	M25/P21	25 [82]				<a href="#">PDF</a>
<a href="#">832504</a>	\$188.00	1	M32/P29	10 [32.8]	180 [7.09]			<a href="#">PDF</a>
<a href="#">832506</a>	\$452.00	1	M32/P29	25 [82]				<a href="#">PDF</a>
<a href="#">832508</a>	\$237.00	1	M40/P36	10 [32.8]	200 [7.87]			<a href="#">PDF</a>
<a href="#">832510</a>	\$575.00	1	M40/P36	25 [82]				<a href="#">PDF</a>

## Split Tubing Accessories Selection Chart

This chart provides an overview of the accessories available for use with the non-metallic two-piece split tubing.

Split Tubing Accessories Selection Chart									
Non-Metallic Two-Piece Split Tubing	Tubing Coupling	Threaded Straight Connector	Split Lock Nut	Bulkhead Connector	Pass-Through Connector	Tubing Holder	Tubing Clamp	End Sleeve	Wire Insertion Tool
EWT-PA M12/P09 831000, 831002	–	–	–	–	AT M20/P09 836401	UH M12/P09 836121	UHE M12/P09 836501	ET M12/P09 836601	KE 837001
EWT-PA M16/P11 832004, 831006	–	SVT M16x1.5/P11 836010	GMT M16x1.5 836101	KFW/D M16/P11 836301	AT M25/P11 836403	UH M16/P11 836123	UHE M16/P11 836503	ET M16/P11 836603	
		SVT M20x1.5/P11 836012	GMT M20x1.5 836103						
EWT-PA M20/P16 831008, 831010	–	SVT M20x1.5/P16 836014	GMT M20x1.5 836103	KFW/D M20/P16 836303	AT M32/P16 836405	UH M20/P16 836125	UHE M20/P16 836505	ET M20/P16 836605	
		SVT M25x1.5/P16 836016	GMT M25x1.5 836105						
EWT-PA M25/P21 832500, 832502	SVG M25/P21 837010	SVT M25x1.5/P21 836018	GMT M25x1.5 836105	KFW/D M25/P21 836305	AT M40/P21 836407	UH M25/P21 836127	UHE M25/P21 836507	ET M25/P21 836607	
		SVT M32x1.5/P21 836020	GMT M32x1.5 836107						
EWT-PA M32/P29 832504, 832506	SVG M32/P29 837012	SVT M32x1.5/P29 836022	GMT M32x1.5 836107	KFW/D M32/P29 836307	AT M50/P29 836409	UH M32/P29 836129	UHE M32/P29 836509	ET M32/P29 836609	
		SVT M40x1.5/P29 836026	GMT M40x1.5 836109						
EWT-PA M40/P36 832508, 832510	SVG M40/P36 837014	SVT M32x1.5/P36 836024	GMT M32x1.5 836107	KFD/W M40/P36 836309	AT M50/P36 836411	UH M40/P36 836131	UHE M40/P36 836511	ET M40/P36 836611	
		SVT M40x1.5/P36 836028	GMT M40x1.5 836109						

### Accessories Overview Diagram



## Couplings - SVG Series

### Overview

The SVG series couplings are used to extend or repair an EWT-PA series tubing. The open latch design allows for easy assembly and superior holding strength. Mounting holes are also included for securing the tubing in place.

### Features

- Easy assembly by snapping over two tubing ends
- Split version simplifies addition and removal of cables
- Mounting holes allow securing coupling to equipment
- Halogen-free
- V0 self-extinguishing per UL94
- IP42, IP54 bolted
- Operating temperature: -40 to 230°F [-40 to 110°C]


**837010**

### Couplings - SVG Series Selection Chart

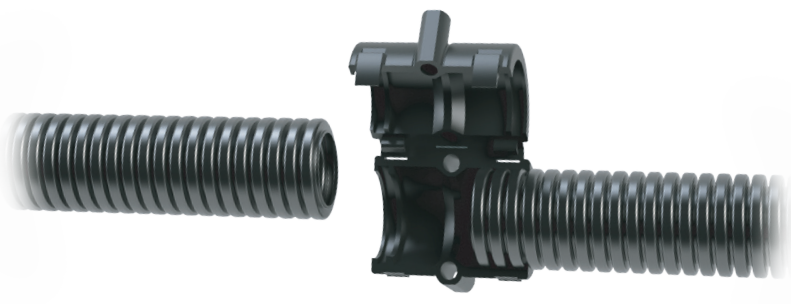
Part Number	Price	Quantity	Size	Works With EWT-PA Series Tubing Size	Hexagon Socket Head Cap Screw (ISO 4762)		Tightening Torque	Color	Material	Drawing Links
					Size	Length mm [in]				
<a href="#"><u>837010</u></a>	\$37.50	5	M25/P21	M25/P21	M5	45 [1.77]	0.4 N•m 3.54 lb•in	Black	Modified polyamide 6	<a href="#"><u>PDF</u></a>
<a href="#"><u>837012</u></a>	\$50.00	5	M32/P29	M32/P29		50 [1.97]				<a href="#"><u>PDF</u></a>
<a href="#"><u>837014</u></a>	\$63.00	5	M40/P36	M40/P36		60 [2.36]				<a href="#"><u>PDF</u></a>

Note: Mounting hardware not provided.

### SVG Series Opening Diagram



Place under tab and push in



## Threaded Straight Connectors - SVT Series

### Overview

The SVT series threaded straight connectors are ideally suited to attach and secure the end of an EWT-PA series split tubing to electrical equipment.

### Agency Approval

- cURus, File E148958



### Features

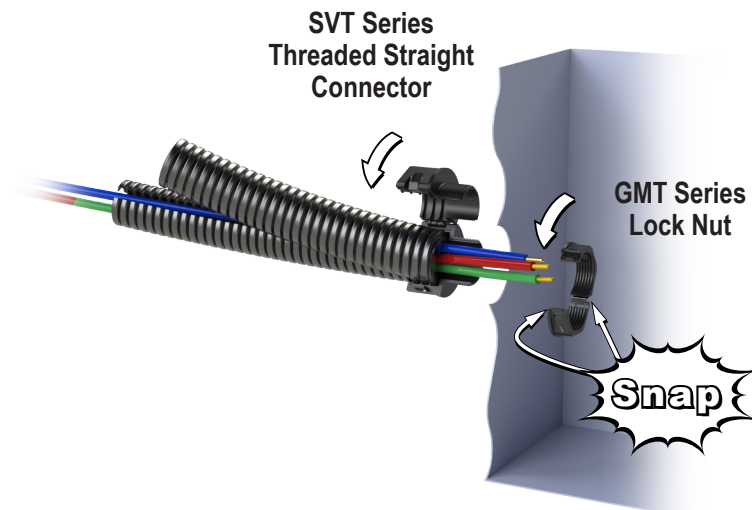
- Simplifies installations and/or repairs
- Use with the GMT series split lock nut
- Compact design
- Easy assembly and disassembly
- Halogen-free
- Flammability: V0 self-extinguishing per UL94
- IP50
- Operating temperature: -40 to 230°F [-40 to 110°C]



**836010**

### Threaded Straight Connectors - SVT Series Selection Chart

Part Number	Price	Quantity	Size	Thread Size	Works With Split Lock Nut	Works With Tubing Size	Mounting Hole Cut-out mm [in]	Color	Material	Drawing Links
<a href="#">836010</a>	\$36.50	5	M16x1.5/P11	M16x1.5	GMT M16x1.5 <a href="#">836101</a>	M16/P11	17.5 [0.69]	Black	Modified polyamide 6	<a href="#">PDF</a>
<a href="#">836012</a>	\$36.50	5	M20x1.5/P11	M20x1.5	GMT M20x1.5 <a href="#">836103</a>		M20/P16			22 [0.87]
<a href="#">836014</a>	\$37.50	5	M20x1.5/P16			M25x1.5				
<a href="#">836016</a>	\$37.50	5	M25x1.5/P16	M32x1.5	GMT M32x1.5 <a href="#">836107</a>		M32/P29			35 [1.38]
<a href="#">836018</a>	\$43.50	5	M25x1.5/P21			M40x1.5				
<a href="#">836020</a>	\$43.50	5	M32x1.5/P21	M40/P36	M40/P36		43 [1.69]			<a href="#">PDF</a>
<a href="#">836022</a>	\$49.00	5	M32x1.5/P29			M40x1.5				M40/P36
<a href="#">836024</a>	\$63.00	5	M32x1.5/P36	M40x1.5	M40/P36		43 [1.69]			
<a href="#">836026</a>	\$51.00	5	M40x1.5/P29			M40x1.5				M40/P36
<a href="#">836028</a>	\$67.00	5	M40x1.5/P36	M40x1.5	M40/P36		43 [1.69]			



The SVT Series Threaded Straight Connector and the GMT Series Lock Nut are sold separately.

## Split Lock Nuts - GMT Series

### Overview

The GMT series split lock nut is used in conjunction with the SVT series threaded straight connector to attach and secure an EWT-PA series tubing to electrical equipment.

### Features

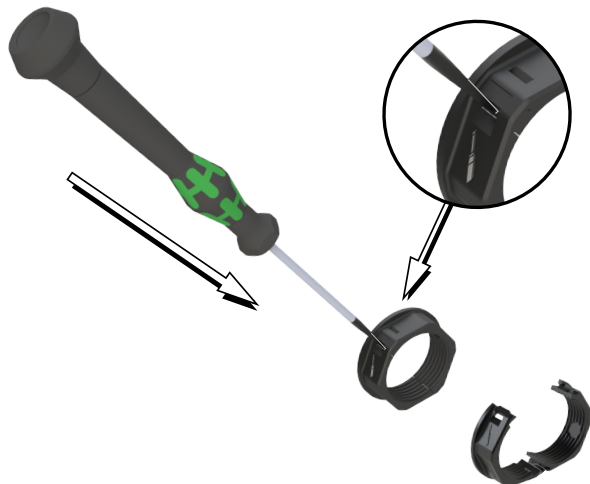
- Simplifies installation and/or repairs
- Use with the SVT series split connector
- Compact design
- Easy assembly and disassembly
- Halogen-free
- Flammability: V0 self-extinguishing per UL94
- Operating temperature: -30 to 212°F [-30 to 100°C]


**836101**

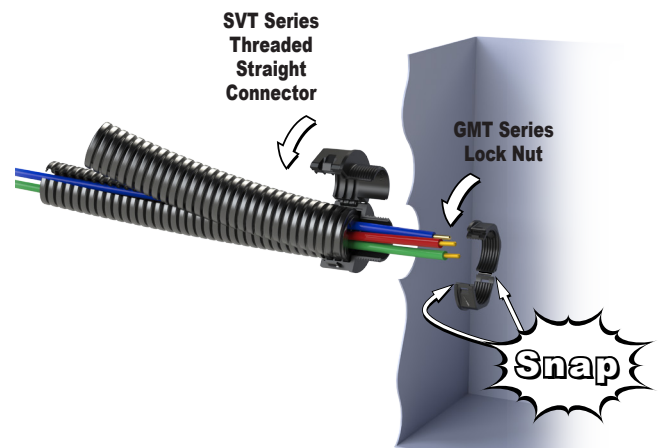
### Split Lock Nuts - GMT Series Selection Chart

Part Number	Price	Quantity	Size	Thread Size	Works With Split Connector	Works with EWT-PA Series Tubing Size	Color	Material	Drawing Links
<a href="#"><u>836101</u></a>	\$23.00	5	M16x1.5	M16x1.5	SVT M16x1.5/P11 <a href="#"><u>836010</u></a>	M16/P11	Black	Modified polyamide 6	<a href="#"><u>PDF</u></a>
<a href="#"><u>836103</u></a>	\$24.00	5	M20x1.5	M20x1.5	SVT M20x1.5/P11 <a href="#"><u>836012</u></a>	M16/P11			<a href="#"><u>PDF</u></a>
					SVT M20x1.5/P16 <a href="#"><u>836014</u></a>	M20/P16			<a href="#"><u>PDF</u></a>
<a href="#"><u>836105</u></a>	\$24.00	5	M25x1.5	M25x1.5	SVT M25x1.5/P16 <a href="#"><u>836016</u></a>	M20/P16			<a href="#"><u>PDF</u></a>
					SVT M25x1.5/P21 <a href="#"><u>836018</u></a>	M25/P21			<a href="#"><u>PDF</u></a>
<a href="#"><u>836107</u></a>	\$25.00	5	M32x1.5	M32x1.5	SVT M32x1.5/P21 <a href="#"><u>836020</u></a>	M25/P21			<a href="#"><u>PDF</u></a>
					SVT M32x1.5/P29 <a href="#"><u>836022</u></a>	M32/P29			
					SVT M32x1.5/P36 <a href="#"><u>836024</u></a>	M40/P36			
<a href="#"><u>836109</u></a>	\$29.00	5	M40x1.5	M40x1.5	SVT M40x1.5/P29 <a href="#"><u>836026</u></a>	M32/P29			<a href="#"><u>PDF</u></a>
					SVT M40x1.5/P36 <a href="#"><u>836028</u></a>	M40/P36			

#### GMT Series Opening Diagram



#### GMT Series Installation Diagram



The SVT Series Threaded Straight Connector and the GMT Series Lock Nut are sold separately.

## Bulkhead Connectors - KFW/D Series

### Overview

The KFW/D series bulkhead connectors provide a 90-degree connection to equipment and machinery. With their removable upper piece and generous opening, these connectors are ideal for use when installing pre-assembled cables.

### Agency Approval

• cURus, File E148958



### Features

- System divided in two to allow for quick and easy installation of cables
- Gasket included
- No extra fittings/parts are required
- Halogen-free
- Flammability: V0 self-extinguishing per UL94
- IP54
- Operating temperature: -40 to 230°F [-40 to 110°C]

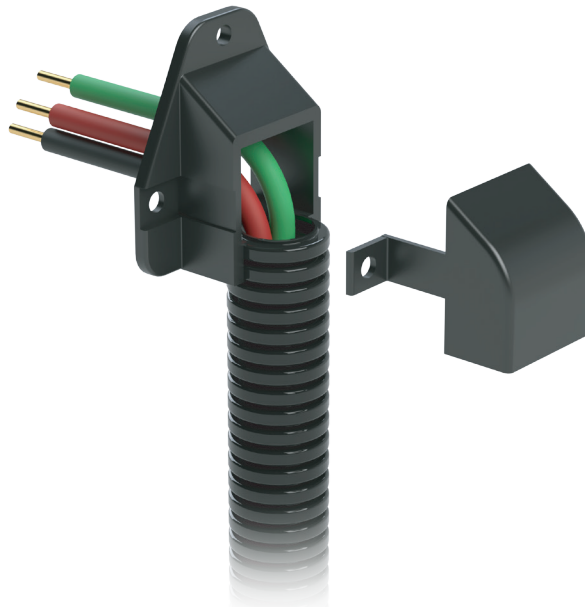


**836301**

**Bulkhead Connectors - KFW/D Series Selection Chart**

Part Number	Price	Quantity	Size	Works With EWT-PA Series Tubing Size	Hexagon Socket Head Cap Screw ISO 4762		Tightening Torque	Mounting Hole Cut-out mm [in]	Color	Material	Drawing Links
					Size	Length mm [in]					
<a href="#">836301</a>	\$24.00	2	M16/P11	M16/P11	M4	10 [0.39]	0.4 N•m 3.54 lb•in	22.5 x 27 [0.89 x 1.06]	Black	Connector: Modified polyamide 6  Gasket (included): Neoprene (CR)	<a href="#">PDF</a>
<a href="#">836303</a>	\$16.50	2	M20/P16	M20/P16	M4	10 [0.39]		22.5 x 27 [0.89 x 1.06]			<a href="#">PDF</a>
<a href="#">836305</a>	\$20.00	2	M25/P21	M25/P21	M6	12 [0.47]		30 x 42.5 [1.18 x 1.67]			<a href="#">PDF</a>
<a href="#">836307</a>	\$29.00	2	M32/P29	M32/P29	M6	14 [0.55]		40 x 68 [1.57 x 2.68]			<a href="#">PDF</a>
<a href="#">836309</a>	\$44.50	2	M40/P36	M40/P36	M6	18 [0.71]		48.8 x 74.5 [1.92 x 2.93]			<a href="#">PDF</a>

Note: Mounting hardware not provided.





## Pass-Through Connectors - AT Series

### Overview

The AT series of pass-through connectors holds the EWT-PA series split tubing together and secures it to equipment and machinery.

### Agency Approval

- cURus, File E148958



### Features

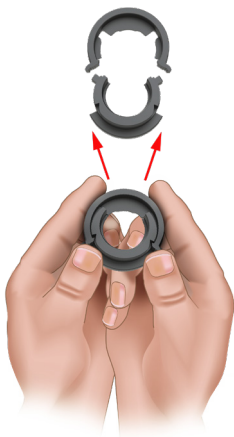
- Click system for quick, easy and tool-free assembly and disassembly
- Compact design
- Tubing can be rotated
- Pass-through openings are drilled in standard hole diameters
- Halogen-free
- Flammability: V0 self-extinguishing per UL94
- IP54
- Operating temperature: -40 to 230°F [-40 to 110°C]


**836401**

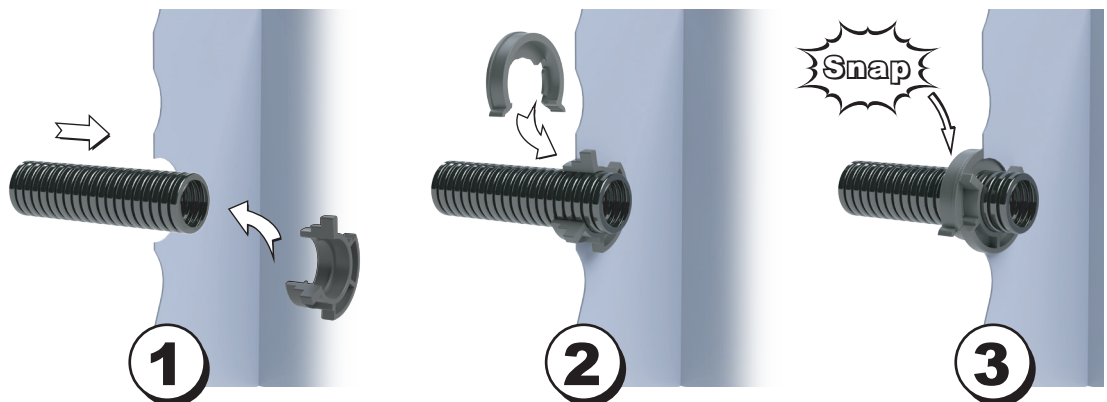
### Pass-Through Connectors - AT Series Selection Chart

Pass-Through Connectors - AT Series Selection Chart									
Part Number	Price	Quantity	Size	Works With EWT-PA Series Tubing Size	Mounting Wall Thickness mm [in]	Mounting Hole Cut-out mm [in]	Color	Material	Drawing Links
<a href="#">836401</a>	\$14.50	5	M20/P09	M12/P09	1.0 - 1.5 [0.04 - 0.06]	20.50 [0.81]	Black	Modified polyamide 6	<a href="#">PDF</a>
<a href="#">836403</a>	\$22.00	5	M25/P11	M16/P11		25.50 [1.00]			<a href="#">PDF</a>
<a href="#">836405</a>	\$24.00	5	M32/P16	M20/P16		32.50 [1.28]			<a href="#">PDF</a>
<a href="#">836407</a>	\$42.50	5	M40/P21	M25/P21		40.50 [1.59]			<a href="#">PDF</a>
<a href="#">836409</a>	\$44.50	5	M50/P29	M32/P29		50.50 [1.99]			<a href="#">PDF</a>
<a href="#">836411</a>	\$46.00	5	M50/P36	M40/P36					<a href="#">PDF</a>

#### AT Series Release Diagram



#### AT Series Installation Diagram



## Tubing Holders - UH Series

### Overview

The UH series tubing holder is used to attach and secure EWT-PA series tubing to equipment and machinery.

### Agency Approval

- cURus, File E148958



### Features

- EWT-PA series tubing is simply snapped into the holder allowing quick assembly
- Easy installation with a single-screw attachment
- Halogen-free
- Flammability: V0 self-extinguishing per UL94
- Operating temperature: -30 to 212°F [-30 to 100°C]


**836121**
**Tubing Holders - UH Series Selection Chart**

Part Number	Price	Quantity	Size	Works With EWT-PA Series Tubing Size	Hexagon Socket Head Cap Screw (ISO 4762)		Tightening Torque	Color	Material	Drawing Link
					Size	Length mm [in]				
<a href="#">836121</a>	\$10.50	5	M12/P09	M12/P09	M5	10 [0.39]	0.8 N•m 7.08 lb•in	Black	Modified polyamide 6	<a href="#">PDF</a>
<a href="#">836123</a>	\$10.50	5	M16/P11	M16/P11						<a href="#">PDF</a>
<a href="#">836125</a>	\$10.50	5	M20/P16	M20/P16						<a href="#">PDF</a>
<a href="#">836127</a>	\$11.50	5	M25/P21	M25/P21	M6	12 [0.47]	1.8 N•m 15.93 lb•in			<a href="#">PDF</a>
<a href="#">836129</a>	\$23.00	5	M32/P29	M32/P29						<a href="#">PDF</a>
<a href="#">836131</a>	\$16.50	5	M40/P36	M40/P36						<a href="#">PDF</a>

Note: Mounting hardware not provided.





## Tubing Clamps - UHE Series

### Overview

The UHE series tubing clamp is used to attach and secure EWT-PA series tubing to equipment and machinery.

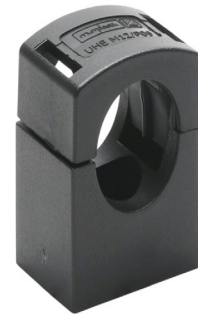
### Agency Approval

- cURus, File E148958



### Features

- EWT-PA series tubing is simply snapped into the holder allowing quick assembly
- Easy installation with a single-screw attachment
- Securing the tubing on all sides makes the tubing clamp excellent for overhead installations
- Highest degree of holding power
- Halogen-free
- Flammability: V0 self-extinguishing per UL94
- Operating temperature: -40 to 230°F [-40 to 110°]


**836501**

### Tubing Clamps - UHE Series Selection Chart

Part Number	Price	Quantity	Size	Works With EWT-PA Series Tubing Size	Hexagon Socket Head Cap Screw (ISO 4762)		Tightening Torque	Color	Material	Drawing Links
					Size	Length mm [in]				
<a href="#">836501</a>	\$10.50	5	M12/P09	M12/P09	M5	10 [0.39]	1N•m 8.85 lb•in	Black	Modified polyamide 6	<a href="#">PDF</a>
<a href="#">836503</a>	\$10.50	5	M16/P11	M16/P11						<a href="#">PDF</a>
<a href="#">836505</a>	\$15.50	5	M20/P16	M20/P16	M6	12 [0.47]	2N•m 17.7 lb•in			<a href="#">PDF</a>
<a href="#">836507</a>	\$12.50	5	M25/P21	M25/P21						<a href="#">PDF</a>
<a href="#">836509</a>	\$14.50	5	M32/P29	M32/P29						<a href="#">PDF</a>
<a href="#">836511</a>	\$15.50	5	M40/P36	M40/P36						<a href="#">PDF</a>

Note: Mounting hardware not provided.

### UHE Series Opening Diagram



Shown on Sureframe T-slotted rail, sold separately.

## End Sleeves - ET Series

### Overview

The ET series end sleeve is used to close off the open end of a tubing or as a centering device for exiting cables/lines.

### Features

- End sleeve opening can be cut to fit different cable diameters
- Easy assembly, just push into the end of the tubing for a tight fit
- Halogen-free
- Flammability: HB per UL94
- IP67
- Operating temperature: -40 to 212°F [-40 to 100°C]


**836601**

### End Sleeves - ET Series Selection Chart

Part Number	Price	Quantity	Size	Works With EWT-PA Series Tubing Size	Color	Material	Drawing Links
<a href="#"><u>836601</u></a>	\$23.00	5	M12/P09	M12/P09	Black	Thermoplastic elastomer (TPE)	<a href="#"><u>PDF</u></a>
<a href="#"><u>836603</u></a>	\$33.50	5	M16/P11	M16/P11			<a href="#"><u>PDF</u></a>
<a href="#"><u>836605</u></a>	\$30.00	5	M20/P16	M20/P16			<a href="#"><u>PDF</u></a>
<a href="#"><u>836607</u></a>	\$37.50	5	M25/P21	M25/P21			<a href="#"><u>PDF</u></a>
<a href="#"><u>836609</u></a>	\$47.00	5	M32/P29	M32/P29			<a href="#"><u>PDF</u></a>
<a href="#"><u>836611</u></a>	\$54.00	5	M40/P36	M40/P36			<a href="#"><u>PDF</u></a>

## Wire Insertion Tool - KE Series

### Overview

The KE series wire insertion tool facilitates the insertion of cables into split cable tubing.

### Features

- Quick insertion of cables
- No unnecessary deformation of the tubing
- Halogen-free
- Flammability: HB per UL94
- IP67
- Operating temperature: -40 to 212°F [-40 to 100°C]


**837001**

### Wire Insertion Tool - KE Series

Part Number	Price	Quantity	Max. Ø Cable mm [in]	Works With EWT-PA Series Tubing Size	Color	Material	Drawing Links
<a href="#"><u>837001</u></a>	\$25.00	1	22 [0.87]	All	Red	Modified polyamid 6	NA