

Non-Metallic Two-Piece Split Conduit EWT-PA Series

Overview

The EWT-PA series non-metallic two-piece split conduits consist of two separate corrugated tubes, one inside the other, which allows the conduit to be opened and reassembled at any time. This conduit is perfect for working with terminated cabling, wires and retrofitting applications where pulling cable and tubing through conduit is impossible to do. The dual overlapping conduits increase mechanical protection and eliminate unintentional exposure of the cabling bundle inside.

Features

- Made of specially modified polyamide 6
- Facilitates mounting of pre-assembled cables
- Split version simplifies addition and removal of new cables/lines anytime
- Simplifies repairs to existing systems
- High crush resistance, per IEC EN 61386: >900N
- Halogen, phosphor and cadmium-free.
- Flammability: HB per UL94
- Operating temperature: -40 to 248°F [-40 to 120°C]



831000

Non-Metallic Two-Piece Split Conduit - EWT-PA Series Selection Chart

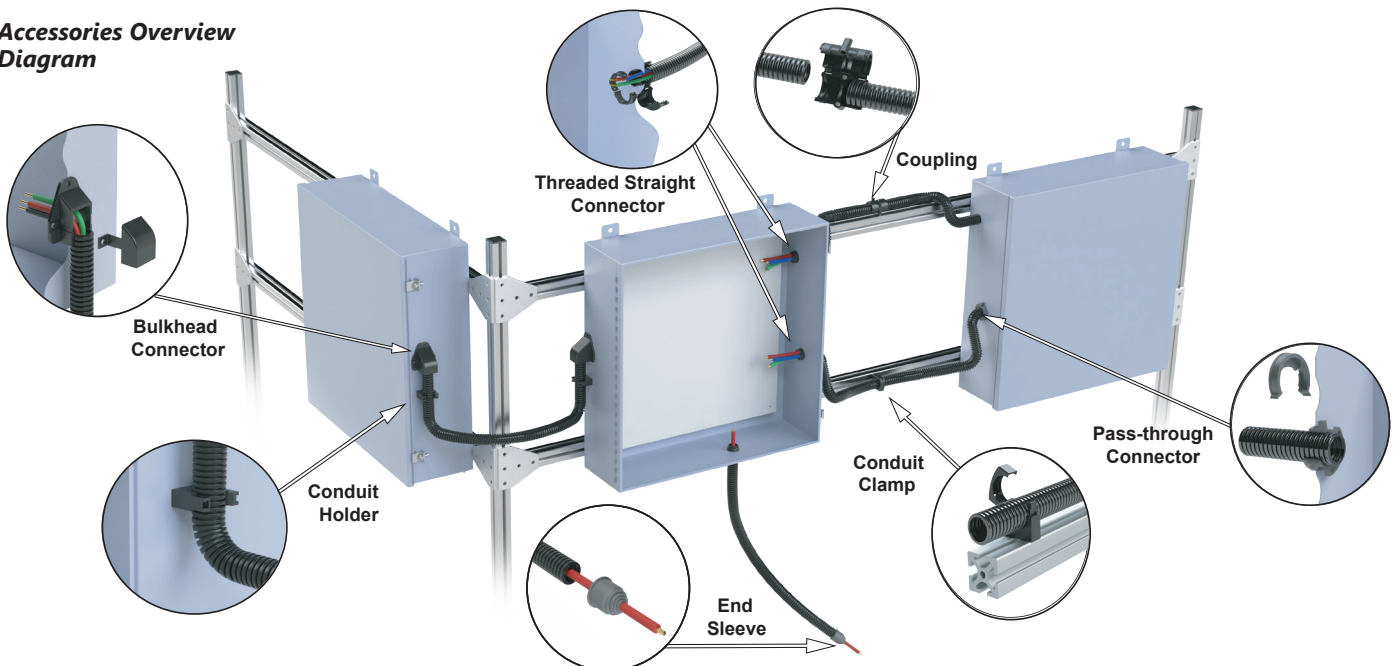
Part Number	Price	Quantity	Size	Coil Length m [ft]	Bend Radius mm [in]	Color	Material	Drawing Links
831000	\$57.00	1	M12/P09	10 [32.8]	75 [2.95]	Black	Modified polyamide 6	PDF
831002	\$127.00	1	M12/P09	25 [82]				PDF
831004	\$90.00	1	M16/P11	10 [32.8]	100 [3.94]			PDF
831006	\$209.00	1	M16/P11	25 [82]				PDF
831008	\$112.00	1	M20/P16	10 [32.8]	120 [4.72]			PDF
831010	\$263.00	1	M20/P16	25 [82]				PDF
832500	\$143.00	1	M25/P21	10 [32.8]	170 [6.69]			PDF
832502	\$340.00	1	M25/P21	25 [82]				PDF
832504	\$181.00	1	M32/P29	10 [32.8]	180 [7.09]			PDF
832506	\$435.00	1	M32/P29	25 [82]				PDF
832508	\$228.00	1	M40/P36	10 [32.8]	200 [7.87]			PDF
832510	\$553.00	1	M40/P36	25 [82]				PDF

Split Conduit Accessories Selection Chart

This chart provides an overview of the accessories available for use with the non-metallic two-piece split conduit.

Split Conduit Accessories Selection Chart									
Non-Metallic Two-Piece Split Conduit	Conduit Coupling	Threaded Straight Connector	Split Lock Nut	Bulkhead Connector	Pass-Through Connector	Conduit Holder	Conduit Clamp	End Sleeve	Wire Insertion Tool
EWT-PA M12/P09 831000 , 831002	-	-	-	-	AT M20/P09 836401	UH M12/P09 836121	UHE M12/P09 836501	ET M12/P09 836601	KE 837001
EWT-PA M16/P11 831004 , 831006	-	SVT M16x1.5/P11 836010	GMT M16x1.5 836101	KFW/D M16/P11 836301	AT M25/P11 836403	UH M16/P11 836123	UHE M16/P11 836503	ET M16/P11 836603	
		SVT M20x1.5/P11 836012	GMT M20x1.5 836103						
EWT-PA M20/P16 831008 , 831010	-	SVT M20x1.5/P16 836014	GMT M20x1.5 836103	KFW/D M20/P16 836303	AT M32/P16 836405	UH M20/P16 836125	UHE M20/P16 836505	ET M20/P16 836605	
		SVT M25x1.5/P16 836016	GMT M25x1.5 836105						
EWT-PA M25/P21 832500 , 832502	SVG M25/P21 837010	SVT M25x1.5/P21 836018	GMT M25x1.5 836105	KFW/D M25/P21 836305	AT M40/P21 836407	UH M25/P21 836127	UHE M25/P21 836507	ET M25/P21 836607	
		SVT M32x1.5/P21 836020	GMT M32x1.5 836107						
EWT-PA M32/P29 832504 , 832506	SVG M32/P29 837012	SVT M32x1.5/P29 836022	GMT M32x1.5 836107	KFW/D M32/P29 836307	AT M50/P29 836409	UH M32/P29 836129	UHE M32/P29 836509	ET M32/P29 836609	
		SVT M40x1.5/P29 836026	GMT M40x1.5 836109						
EWT-PA M40/P36 832508 , 832510	SVG M40/P36 837014	SVT M32x1.5/P36 836024	GMT M32x1.5 836107	KFD/W M40/P36 836309	AT M50/P36 836411	UH M40/P36 836131	UHE M40/P36 836511	ET M40/P36 836611	
		SVT M40x1.5/P36 836028	GMT M40x1.5 836109						

Accessories Overview Diagram



Flex Split Conduit



Couplings - SVG Series

Overview

The SVG series couplings are used to extend or repair an EWT-PA series conduit. The open latch design allows for easy assembly and superior conduit holding strength. Mounting holes are also included for securing the conduit in place.

Features

- Easy assembly by snapping over two conduit ends
- Split version simplifies addition and removal of cables
- Mounting holes allow securing coupling to equipment
- Halogen-free
- V0 self-extinguishing per UL94
- IP42, IP54 bolted
- Operating temperature: -40 to 230°F [-40 to 110°C]



837010

Couplings - SVG Series Selection Chart										
Part Number	Price	Quantity	Size	Works With EWT-PA Series Conduit Size	Hexagon Socket Head Cap Screw (ISO 4762)		Tightening Torque	Color	Material	Drawing Links
					Size	Length mm [in]				
<u>837010</u>	\$36.00	5	M25/P21	M25/P21	M5	45 [1.77]	0.4 N•m 3.54 lbf•in	Black	Modified polyamide 6	<u>PDF</u>
<u>837012</u>	\$48.00	5	M32/P29	M32/P29		50 [1.97]				<u>PDF</u>
<u>837014</u>	\$61.00	5	M40/P36	M40/P36		60 [2.36]				<u>PDF</u>

Note: Mounting hardware not provided.

SVG Series Opening Diagram





Threaded Straight Connectors - SVT Series

Overview

The SVT series threaded straight connectors are ideally suited to attach and secure the end of an EWT-PA series split conduit to electrical equipment.

Agency Approval

- cURus, File E148958



Features

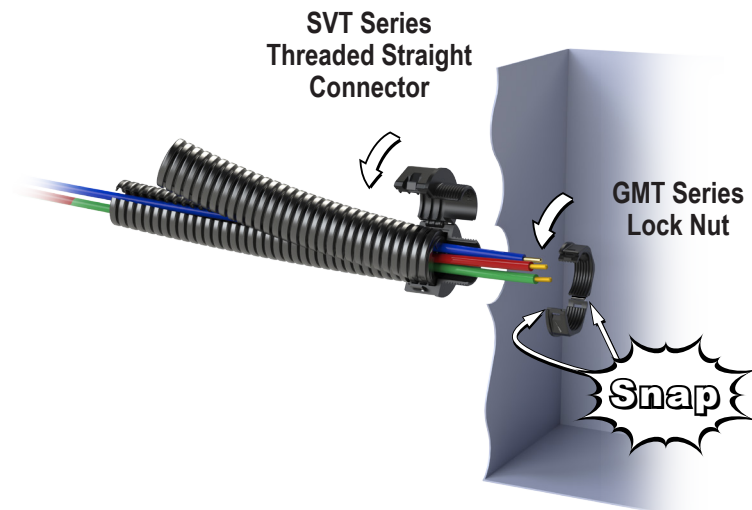
- Simplifies installations and/or repairs
- Use with the GMT series split lock nut
- Compact design
- Easy assembly and disassembly
- Halogen-free
- Flammability: V0 self-extinguishing per UL94
- IP50
- Operating temperature: -40 to 230°F [-40 to 110°C]



836010

Threaded Straight Connectors - SVT Series Selection Chart

Part Number	Price	Quantity	Size	Thread Size	Works With Split Lock Nut	Works With Conduit Size	Mounting Hole Cut-out mm [in]	Color	Material	Drawing Links
836010	\$35.00	5	M16x1.5/P11	M16x1.5	GMT M16x1.5 836101	M16/P11	17.5 [0.69]	Black	Modified polyamide 6	PDF
836012	\$35.00	5	M20x1.5/P11	M20x1.5	GMT M20x1.5 836103	M20/P16	22 [0.87]			PDF
836014	\$36.00	5	M20x1.5/P16				PDF			
836016	\$36.00	5	M25x1.5/P16	M25x1.5	GMT M25x1.5 836105	M25/P21	27 [1.06]			PDF
836018	\$42.00	5	M25x1.5/P21				PDF			
836020	\$42.00	5	M32x1.5/P21	M32x1.5	GMT M32x1.5 836107	M32/P29	35 [1.38]			PDF
836022	\$47.00	5	M32x1.5/P29				M40/P36			PDF
836024	\$61.00	5	M32x1.5/P36				PDF			
836026	\$49.00	5	M40x1.5/P29	M40x1.5	GMT M40x1.5 836109	M32/P29	43 [1.69]			PDF
836028	\$64.00	5	M40x1.5/P36					M40/P36	PDF	



The SVT Series Threaded Straight Connector and the GMT Series Lock Nut are sold separately.

Split Lock Nuts - GMT Series

Overview

The GMT series split lock nut is used in conjunction with the SVT series threaded straight connector to attach and secure an EWT-PA series conduit to electrical equipment.

Features

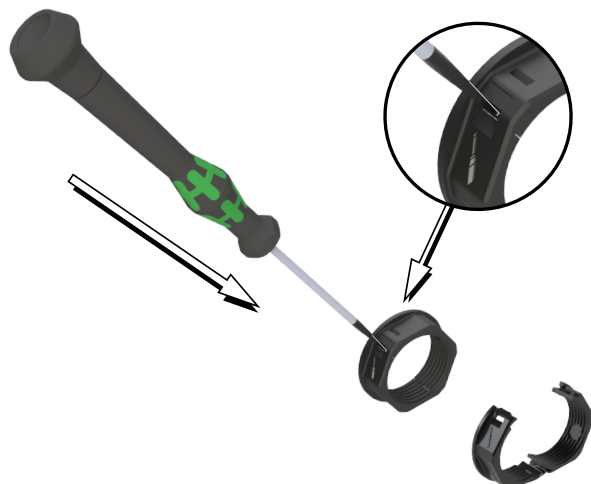
- Simplifies installation and/or repairs
- Use with the SVT series split connector
- Compact design
- Easy assembly and disassembly
- Halogen-free
- Flammability: V0 self-extinguishing per UL94
- Operating temperature: -30 to 212°F [-30 to 100°C]



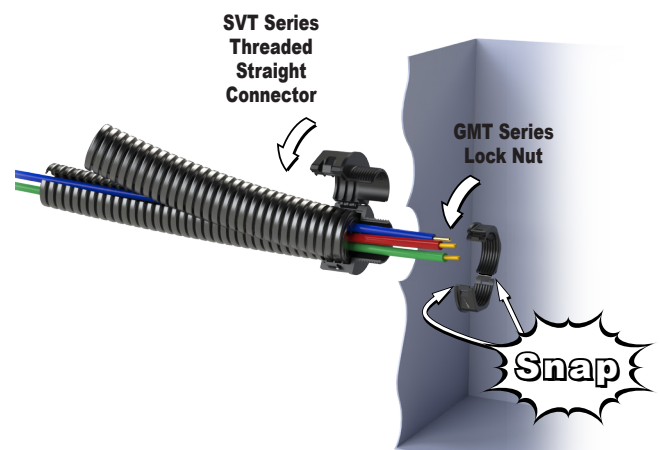
836101

Split Lock Nuts - GMT Series Selection Chart									
Part Number	Price	Quantity	Size	Thread Size	Works With Split Connector	Works with EWT-PA Series Conduit Size	Color	Material	Drawing Links
836101	\$22.00	5	M16x1.5	M16x1.5	SVT M16x1.5/P11 836010	M16/P11	Black	Modified polyamide 6	PDF
836103	\$23.00	5	M20x1.5	M20x1.5	SVT M20x1.5/P11 836012	M16/P11			PDF
					SVT M20x1.5/P16 836014	M20/P16			
836105	\$23.00	5	M25x1.5	M25x1.5	SVT M25x1.5/P16 836016	M20/P16			PDF
					SVT M25x1.5/P21 836018	M25/P21			
836107	\$24.00	5	M32x1.5	M32x1.5	SVT M32x1.5/P21 836020	M25/P21			PDF
					SVT M32x1.5/P29 836022	M32/P29			
					SVT M32x1.5/P36 836024	M40/P36			
836109	\$28.00	5	M40x1.5	M40x1.5	SVT M40x1.5/P29 836026	M32/P29			PDF
					SVT M40x1.5/P36 836028	M40/P36			

GMT Series Opening Diagram



GMT Series Installation Diagram



The SVT Series Threaded Straight Connector and the GMT Series Lock Nut are sold separately.

Bulkhead Connectors - KFW/D Series

Overview

The KFW/D series bulkhead connectors provide a 90-degree connection to equipment and machinery. With their removable upper piece and generous opening, these connectors are ideal for use when installing pre-assembled cables.

Agency Approval

- cURus, File E148958



Features

- System divided in two to allow for quick and easy installation of cables
- Gasket included
- No extra fittings/parts are required
- Halogen-free
- Flammability: V0 self-extinguishing per UL94
- IP54
- Operating temperature: -40 to 230°F [-40 to 110°C]

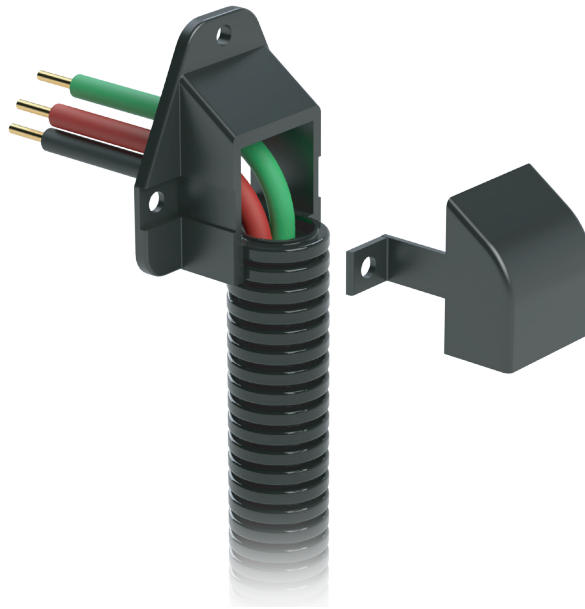


836301

Bulkhead Connectors - KFW/D Series Selection Chart

Part Number	Price	Quantity	Size	Works With EWT-PA Series Conduit Size	Hexagon Socket Head Cap Screw ISO 4762		Tightening Torque	Mounting Hole Cut-out mm [in]	Color	Material	Drawing Links
					Size	Length mm [in]					
836301	\$23.00	2	M16/P11	M16/P11	M4	10 [0.39]	0.4 N•m 3.54 lb•in	22.5 x 27 [0.89 x 1.06]	Black	Connector: Modified polyamide 6 Gasket (included): Neoprene (CR)	PDF
836303	\$16.00	2	M20/P16	M20/P16	M4	10 [0.39]		22.5 x 27 [0.89 x 1.06]			PDF
836305	\$19.00	2	M25/P21	M25/P21	M6	12 [0.47]		30 x 42.5 [1.18 x 1.67]			PDF
836307	\$28.00	2	M32/P29	M32/P29	M6	14 [0.55]		40 x 68 [1.57 x 2.68]			PDF
836309	\$43.00	2	M40/P36	M40/P36	M6	18 [0.71]		48.8 x 74.5 [1.92 x 2.93]			PDF

Note: Mounting hardware not provided.



Pass-Through Connectors - AT Series

Overview

The AT series of pass-through connectors holds the EWT-PA series split conduit together and secures it to equipment and machinery.

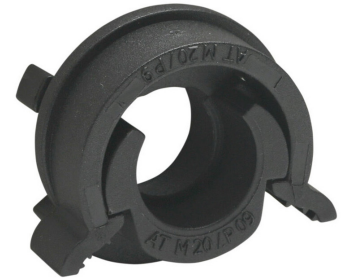
Agency Approval

- cURus, File E148958



Features

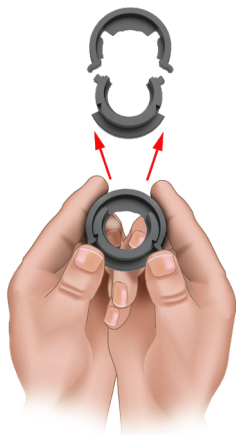
- Click system for quick, easy and tool-free assembly and disassembly
- Compact design
- Conduits can be rotated
- Pass-through openings are drilled in standard hole diameters
- Halogen-free
- Flammability: V0 self-extinguishing per UL94
- IP54
- Operating temperature: -40 to 230°F [-40 to 110°C]



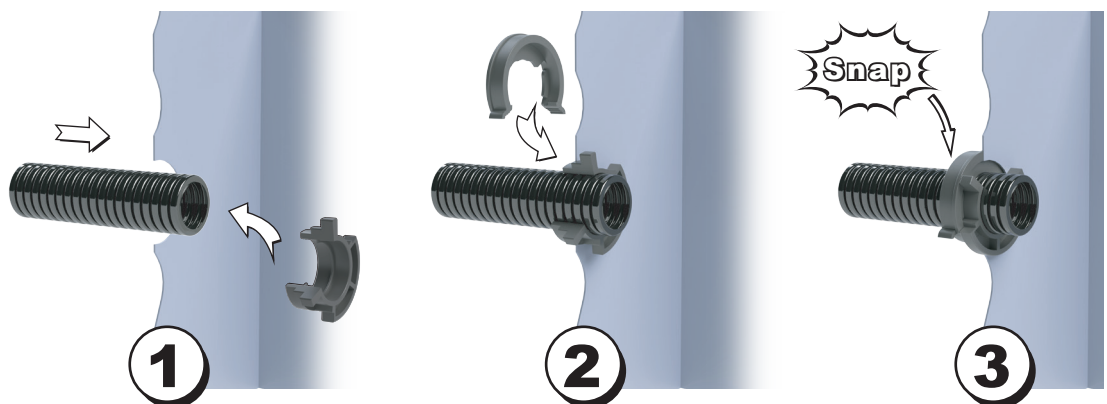
836401

Pass-Through Connectors - AT Series Selection Chart									
Part Number	Price	Quantity	Size	Works With EWT-PA Series Conduit Size	Mounting Wall Thickness mm [in]	Mounting Hole Cut-out mm [in]	Color	Material	Drawing Links
836401	\$14.00	5	M20/P09	M12/P09	1.0 - 1.5 [0.04 - 0.06]	20.50 [0.81]	Black	Modified polyamide 6	PDF
836403	\$21.00	5	M25/P11	M16/P11		25.50 [1.00]			PDF
836405	\$23.00	5	M32/P16	M20/P16		32.50 [1.28]			PDF
836407	\$41.00	5	M40/P21	M25/P21		40.50 [1.59]			PDF
836409	\$43.00	5	M50/P29	M32/P29		50.50 [1.99]			PDF
836411	\$44.00	5	M50/P36	M40/P36					PDF

AT Series Release Diagram



AT Series Installation Diagram





Conduit Holders - UH Series

Overview

The UH series conduit holder is used to attach and secure EWT-PA series conduit to equipment and machinery.

Agency Approval

- cURus, File E148958



Features

- EWT-PA series conduit is simply snapped into the holder allowing quick assembly
- Easy installation with a single-screw attachment
- Halogen-free
- Flammability: V0 self-extinguishing per UL94
- Operating temperature: -30 to 212°F [-30 to 100°C]



836121

Conduit Holders - UH Series Selection Chart										
Part Number	Price	Quantity	Size	Works With EWT-PA Series Conduit Size	Hexagon Socket Head Cap Screw (ISO 4762)		Tightening Torque	Color	Material	Drawing Link
					Size	Length mm [in]				
836121	\$10.00	5	M12/P09	M12/P09	M5	10 [0.39]	0.8 N•m 7.08 lb•in	Black	Modified polyamide 6	PDF
836123	\$10.00	5	M16/P11	M16/P11						PDF
836125	\$10.00	5	M20/P16	M20/P16						PDF
836127	\$11.00	5	M25/P21	M25/P21	M6	12 [0.47]	1.8 N•m 15.93 lb•in			PDF
836129	\$22.00	5	M32/P29	M32/P29						PDF
836131	\$16.00	5	M40/P36	M40/P36						PDF

Note: Mounting hardware not provided.



Conduit Clamps - UHE Series

Overview

The UHE series conduit clamp is used to attach and secure EWT-PA series conduit to equipment and machinery.

Agency Approval

- cURus, File E148958



Features

- EWT-PA series conduit is simply snapped into the holder allowing quick assembly
- Easy installation with a single-screw attachment
- Securing the conduit on all sides makes the conduit clamp excellent for overhead installations
- Highest degree of holding power
- Halogen-free
- Flammability: V0 self-extinguishing per UL94
- Operating temperature: -40 to 230°F [-40 to 110°]



836501

Conduit Clamps - UHE Series Selection Chart										
Part Number	Price	Quantity	Size	Works With EWT-PA Series Conduit Size	Hexagon Socket Head Cap Screw (ISO 4762)		Tightening Torque	Color	Material	Drawing Links
					Size	Length mm [in]				
836501	\$10.00	5	M12/P09	M12/P09	M5	10 [0.39]	1N•m 8.85 lb•in	Black	Modified polyamide 6	PDF
836503	\$10.00	5	M16/P11	M16/P11						PDF
836505	\$15.00	5	M20/P16	M20/P16	M6	12 [0.47]	2N•m 17.7 lb•in			PDF
836507	\$12.00	5	M25/P21	M25/P21						PDF
836509	\$14.00	5	M32/P29	M32/P29						PDF
836511	\$15.00	5	M40/P36	M40/P36						PDF

Note: Mounting hardware not provided.

UHE Series Opening Diagram



Shown on Sureframe T-slotted rail, sold separately.

End Sleeves - ET Series

Overview

The ET series end sleeve is used to close off the open end of a conduit or as a centering device for exiting cables/lines.

Features

- End sleeve opening can be cut to fit different cable diameters
- Easy assembly, just push into the end of the conduit for a tight fit
- Halogen-free
- Flammability: HB per UL94
- IP67
- Operating temperature: -40 to 212°F [-40 to 100°C]



836601

End Sleeves - ET Series Selection Chart

Part Number	Price	Quantity	Size	Works With EWT-PA Series Conduit Size	Color	Material	Drawing Links
836601	\$22.00	5	M12/P09	M12/P09	Black	Thermoplastic elastomer (TPE)	PDF
836603	\$32.00	5	M16/P11	M16/P11			PDF
836605	\$29.00	5	M20/P16	M20/P16			PDF
836607	\$36.00	5	M25/P21	M25/P21			PDF
836609	\$45.00	5	M32/P29	M32/P29			PDF
836611	\$52.00	5	M40/P36	M40/P36			PDF

Wire Insertion Tool - KE Series

Overview

The KE series wire insertion tool facilitates the insertion of cables into split cable conduits.

Features

- Quick insertion of cables
- No unnecessary deformation of the conduit
- Halogen-free
- Flammability: HB per UL94
- IP67
- Operating temperature: -40 to 212°F [-40 to 100°C]



837001

Wire Insertion Tool - KE Series

Part Number	Price	Quantity	Max. Ø Cable mm [in]	Works With EWT-PA Series Conduit Size	Color	Material	Drawing Links
837001	\$24.00	1	22 [0.87]	All	Red	Modified polyamid 6	NA