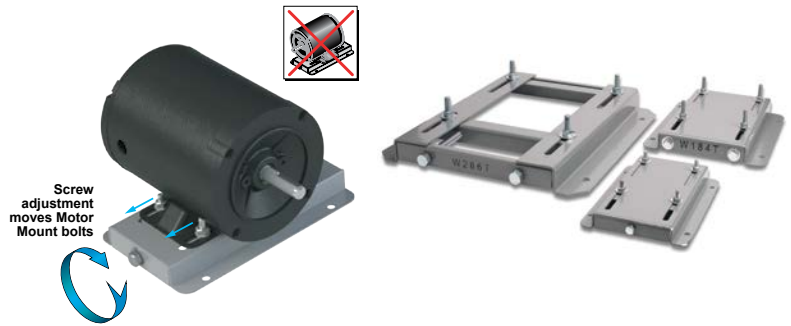


STABLE™ Motor Slide Bases

Mounting Slide Bases for 56 to 449T NEMA Motors Features

- Allows adjustment of motor mounting position
- Slide direction is perpendicular to motor shaft
- Double adjusting screws for frames 182T-449T
- Manufactured to precise dimensional standards
- Dimensionally interchangeable with existing major makes
- Heavy-duty steel construction
- Painted with oven-baked primer for better adhesion of customer's paint
- All "D" bolts (motor mounting bolts) are fixed to the exact motor foot pattern
- All "D" bolts are welded into position to prevent spinning and dropping from slots
- Nuts and washers are provided for securing the motor to the slide base



STABLE Motor Slide Bases for 3-Phase Motors

Part Number (MTA-BASE-xxx)	Price	Fits Frame Type	Product Wt. (lb)	Fits Motor					Drawing Links				
				IronHorse	Leeson®	WEG (Part number ending in...)	Marathon						
					WashGuard®		microMAX, Max+, Black Max, Blue Max, SyMAX	XRI GP & NEMA Premium, Jet Pump		Globetrotter			
W56	\$16.00	56*	2.8	MTPM-P3x-1x18									
				MTPM-P5x-1x18									
				MTPM-P7x-1x18									
				MTPM-0xx-1x18									
				MTPM-1xx-1x18									
				MTR(2)(P)-xxx-xxxxx*									
				MTRJ(P)-xxx-xxxxx									
				MTSN-P33-3BD18									
				MTSN-P33-3BD18R									
				MTSN-P33-3BD36				112427.00					
				MTSN-P33-3BD36R				112428.00					
				MTSP-P33-3BD18				112429.00					
				MTSP-P33-3BD18R				112430.00					
				MTSP-P33-3BD36				113019.00					
				MTSP-P33-3BD36R				113023.00					
				MTSN-P50-3BD18				113473.00					E2000
				MTSN-P50-3BD18R				113586.00					D390
				MTSN-P50-3BD36				113590.00					G580
				MTSP-P50-3BD12				113591.00					D391
				MTSP-P50-3BD18				113649.00			Y500		G581
				MTSP-P50-3BD18R				116644.00			Y502		K705
				MTSP-P50-3BD36				116645.00			Y360		D392
				MTSP-P50-3BD36R				119468.00			Y362		G582
				MTSN-P75-3BD18				119469.00			Y364		K707
				MTSN-P75-3BD18R				119471.00			Y280		D393A
				MTSN-P75-3BD36				119475.00		(...)56-S	Y281		K708A
				MTSP-P75-3BD12				119476.00		(...)56C-S	Y282		K709A
				MTSP-P75-3BD18				119478.00			Y592(-A772)		G583A
				MTSP-P75-3BD18R				119480.00			Y534(-A772)		K709A
				MTSP-P75-3BD36				119482.00			Y535(-A772)		D394A
				MTSP-P75-3BD36R				119483.00			SY001		K721A
				MTSN-001-3BD18				191202.00			SY003		G584A
				MTSN-001-3BD18R				191204.00			SY004		D395A
				MTSN-001-3BD36				191205.00			SY005		G585A
				MTSP-001-3BD18				191206.00			SY035		K724A
				MTSP-001-3BD18R				191207.00					D396A
				MTSP-001-3BD36				191208.00					K725A
				MTSP-001-3BD36R				191560.00					J066A
				MTSN-1P5-3BD18				191561.00					
				MTSN-1P5-3BD18R				191562.00					
				MTSN-1P5-3BD36				191563.00					
				MTSP-1P5-3BD18				191564.00					
				MTSP-1P5-3BD18R				191569.00					
				MTSP-1P5-3BD36									
				MTSP-1P5-3BD36R									
				MTSN-002-3BD18									
				MTSN-002-3BD18R									
				MTSN-002-3BD36									
				MTSP-002-3BD18									
				MTSP-002-3BD18R									
MTSP-002-3BD36													
MTSP-002-3BD36R													

* IronHorse MTR2 56HC motors have double-punched bases to fit on slide base MTA-BASE-W56.

STABLE™ Motor Slide Bases

STABLE Motor Slide Bases for 3-Phase Motors										
Part Number (MTA-BASE-xxx)	Price	Fits Frame Type	Product Wt. (lb)	Fits Motor						Drawing Links
				IronHorse	Leeson®	WEG (Part number ending in...)	Marathon			
					WashGuard®		microMAX, Max+, Black Max, Blue Max, SyMAX	XRI GP & NEMA Premium, Jet Pump	Globetrotter	
<u>W143T</u>	\$29.00	143T/TC	4.6	MTCP2-001-3BD18(C) MTCP2-1P5-3BD36 MTSN-1P5-3BD36-14 MTSP-1P5-3BD36-14 MTSP-1P5-3BD36R-14	<u>191487.00</u> <u>191565.00</u>		<u>Y536(-A772)</u>	<u>E2001A</u> <u>E2003</u>	-	<u>PDF</u>
<u>W145T</u>	\$29.00	145T/TC	5.1	MTCP2-001-3BD12 MTCP2-1P5-3BD18(C) MTCP2-002-3BD18(C) MTCP2-002-3BD36 MTSP-001-3BD12 MTSN-1P5-3BD18-14 MTSN-1P5-3BD18R-14 MTSP-1P5-3BD18-14 MTSP-1P5-3BD18R-14 MTSN-002-3BD18-14 MTSN-002-3BD18R-14 MTSN-002-3BD36-14 MTSP-002-3BD18-14 MTSP-002-3BD18R-14 MTSP-002-3BD36-14 MTSP-002-3BD36R-14	<u>121866.00</u> <u>121868.00</u> <u>121870.00</u> <u>122182.00</u> <u>122184.00</u> <u>122185.00</u> <u>191490.00</u> <u>191491.00</u> <u>191570.00</u>	(...) <u>145T-S</u> (...) <u>145TC-S</u>	<u>Y366</u> <u>Y368</u> <u>Y284</u> <u>Y285</u> <u>Y537</u> <u>Y538(-A772)</u> <u>Y551(-A772)</u>	<u>E2002</u> <u>E2004A</u> <u>E2007A</u>	-	<u>PDF</u>
<u>W182T</u>	\$39.00	182T/TC	9.2	MTCP2-1P5-3BD12 MTCP2-003-3BD18(C) MTCP2-003-3BD36 MTSP-1P5-3BD12 MTSN-003-3BD18-18 MTSN-003-3BD36-18 MTSP-003-3BD18-18 MTSP-003-3BD36-18	<u>132196.00</u> <u>132198.00</u>		<u>Y1999</u> <u>Y286A</u> <u>Y541A(-A772)</u> <u>SY036</u> <u>SY066</u>	<u>E2009</u> <u>E2010</u>	<u>GT0010A</u> <u>GT1010A</u>	<u>PDF</u>
<u>W184T</u>	\$39.00	184T/TC	10	MTCP2-002-3BD12 MTCP2-005-3BD18(C) MTCP2-005-3BD36 MTF-00x-1C18 MTSP-002-3BD12 MTSP-005-3BD18 MTSP-005-3BD36	<u>132197.00</u> <u>132200.00</u> <u>132201.00</u> <u>132440.00</u>		<u>Y1372</u> <u>Y287A</u> <u>Y540(-A772)</u> <u>Y543A(-A772)</u> <u>E2012</u> <u>E2013</u> <u>SY007A</u> <u>SY067</u>	-	<u>GT0013A</u> <u>GT1013A</u> <u>GT1210A</u> <u>GT1212A</u> <u>GT1213A</u>	<u>PDF</u>
<u>W213T</u>	\$57.00	213T/TC	13	MTCP2-003-3BD12 MTCP2-7P5-3BD18(C) MTCP2-7P5-3BD36 MTSP-003-3BD12 MTSP-7P5-3BD18	<u>140819.00</u> <u>140822.00</u> <u>141266.00</u>		<u>Y994</u> <u>Y542(-A772)</u> <u>Y545(-A772)</u> <u>E2011</u> <u>E2016A</u> <u>E2011A</u> <u>E2016B</u> <u>SY068</u>	-	<u>GT0016A</u> <u>GT1016A</u> <u>GT1216A</u>	<u>PDF</u>
<u>W215T</u>	\$57.00	215T/TC	15	MTCP2-005-3BD12 MTCP2-010-3BD18(C) MTCP2-010-3BD36 MTSP-005-3BD12 MTSP-010-3BD18	<u>140820.00</u> <u>140821.00</u>		<u>Y996</u> <u>Y544(-A772)</u> <u>Y547(-A772)</u> <u>E2018</u> <u>E2014A</u> <u>E2018A</u> <u>SY069</u>	-	<u>GT0019A</u> <u>GT1019A</u> <u>GT1218A</u> <u>GT1219A</u>	<u>PDF</u>
<u>W254T</u>	\$77.00	254T/TC	18	MTCP2-7P5-3BD12 MTCP2-015-3BD18(C) MTCP2-015-3BD36 MTSP-015-3BD18	-		<u>Y546(-A772)</u> <u>Y549(-A772)</u>	-	<u>GT0059</u> <u>GT1022A</u> <u>GT1222A</u>	<u>PDF</u>

* IronHorse MTR2 56HC motors have double-punched bases to fit on slide base [MTA-BASE-W56](#).

STABLE™ Motor Slide Bases

STABLE Motor Slide Bases for 3-Phase Motors										
Part Number (MTA-BASE- xxx)	Price	Fits Frame Type	Product Wt. (lb)	Fits Motor						Drawing Links
				IronHorse	Leeson®	WEG (Part number ending in...)	Marathon			
					WashGuard®		microMAX, Max+, Black Max, Blue Max, SyMAX	XRI GP & NEMA Premium, Jet Pump	Globetrotter	
W256T	\$77.00	256T/ TC	19	MTCP2-010-3BD12 MTCP2-020-3BD18(C) MTCP2-020-3BD36 MTSP-020-3BD18	-		Y548(-A772) Y552	-	GT0062 GT1025A GT1225A	PDF
W284T	\$86.00	284T/ TC	20	MTCP2-015-3BD12 MTCP2-025-3BD18(C)	-		-	-	GT0065 GT1028A	PDF
W286T	\$86.00	286T/ TC	21	MTCP2-020-3BD12 MTCP2-030-3BD18(C)	-		-	-	GT0067 GT1031A	PDF
W324T	\$126.00	324T/ TC	30	MTCP2-040-3BD18(C)	-		Y571(-A774) Y513(-A775)	-	GT0073 GT1034A	PDF
W326T	\$126.00	326T/ TC	31	MTCP2-050-3BD18(C)	-		Y572(-A774) Y514(-A775)	-	GT0077 GT1037A	PDF
W364T	\$171.00	364T/ TC	43	MTCP2-060-3BD18(C)	-		Y573(-A774) Y515(-A775)	-	GT1040A	PDF
W365T	\$171.00	365T/ TC	43	MTCP2-075-3BD18(C)	-		Y574(-A774) Y516(-A775)	-	GT1043A	PDF
W404T	\$209.00	404T/ TC	58	-	-		-	-	-	PDF
W405T	\$209.00	405T/ TC	60	MTCP2-100-3BD18(C)	-		Y575(-A774) Y517(-A775)	-	GT1046A	PDF
W444T	\$237.00	444T	63	MTCP2-125-3BD18	-		-	-	GT1049A	PDF
W445T	\$237.00	445T	65	MTCP2-150-3BD18	-		-	-	GT1052A	PDF
W447T	\$312.00	447T	89	MTCP2-200-3BD18	-		-	-	GT1055A	PDF
W449T	\$312.00	449T	94	MTCP2-250-3D18 MTCP2-300-3D18	-		-	-	-	PDF

* IronHorse MTR2 56HC motors have double-punched bases to fit on slide base [MTA-BASE-W56](#).

STABLE™ Motor Slide Bases

Mounting Slide Bases for 56 to 215T NEMA Motors Features

STABLE Motor Slide Bases for 1-phase Motors									
Part Number	Price	Fits Frame Type	Product Wt. (lb)	Fits Motor					
				IronHorse	Leeson®		Marathon		
					Washguard®	Marathon DP GP (NEMA Service Factor)	Marathon DP Air Compressor	Fan & Blower	Marathon TE GP 4-in-1
<u>MTA-BASE-W56</u>	\$16.00	56*	2.8	MTR2-xxx-1AB18 MTR2-xxx-1AB36 MTPM-xxx-1L18 MTPM-xxx-1M18	112431.00	<u>C158A</u>	D010 C169 C704 D017	<u>C216</u>	<u>G570</u>
					112527.00	<u>G915A</u>		<u>D311</u>	
					112528.00	<u>C175A</u>		<u>C1153</u>	<u>G571</u>
					112529.00	<u>C167A</u>		<u>C1155</u>	<u>D312</u>
					113583.00	<u>C179A</u>		<u>B319</u>	<u>G572</u>
					114311.00	<u>G937A</u>		<u>D118</u>	<u>D313</u>
					114313.00	<u>C185A</u>		<u>C1158</u>	<u>G573</u>
					114317.00	<u>C187A</u>		<u>C235</u>	<u>D314</u>
					191475.00	<u>C193A</u>		<u>D115</u>	<u>G574</u>
					191477.00	<u>E261A</u>		<u>C1160</u>	<u>D315</u>
					191479.00	<u>E268A</u>		<u>C1161</u>	<u>G575</u>
						<u>EG277A</u>		<u>B352</u>	<u>D316</u>
					<u>MTA-BASE-W143T</u>	\$29.00		143T / TC	4.6
<u>MTA-BASE-W145T</u>	\$29.00	145TC / TC	5.1	-	-	<u>C191</u> <u>I127</u> <u>C194</u>	-	-	-
<u>MTA-BASE-W182T</u>	\$39.00	182T / TC	9.2	-	-	-	-	-	-
<u>MTA-BASE-W184T</u>	\$39.00	184 / TC	10	MTF-00x-1C18	-	-	<u>Z502</u>	-	-
<u>MTA-BASE-W213T</u>	\$57.00	213T / TC	13	-	-	-	-	-	-
<u>MTA-BASE-W215T</u>	\$57.00	215T T TC	15	-	-	-	-	-	-

* IronHorse MTR2 56HC motors have double-punched bases to fit on slide base [MTA-BASE-W56](#).