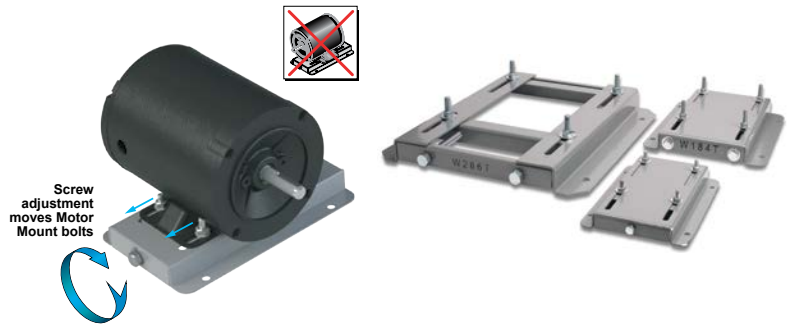


# STABLE™ Motor Slide Bases

## Mounting Slide Bases for 56 to 449T NEMA Motors Features

- Allows adjustment of motor mounting position
- Slide direction is perpendicular to motor shaft
- Double adjusting screws for frames 182T-449T
- Manufactured to precise dimensional standards
- Dimensionally interchangeable with existing major makes
- Heavy-duty steel construction
- Painted with oven-baked primer for better adhesion of customer's paint
- All "D" bolts (motor mounting bolts) are fixed to the exact motor foot pattern
- All "D" bolts are welded into position to prevent spinning and dropping from slots
- Nuts and washers are provided for securing the motor to the slide base



### STABLE Motor Slide Bases for 3-Phase Motors

Part Number (MTA-BASE-xxx)	Price	Fits Frame Type	Product Wt. (lb)	Fits Motor					Drawing Links		
				IronHorse	Leeson®	WEG (Part number ending in...)	Marathon				
					WashGuard®		microMAX, Max +, Black Max, Blue Max, SyMAX	XRI GP & NEMA Premium, Jet Pump		Globetrotter	
<b>W56</b>	\$14.00	56*	2.8	MTPM-P3x-1x18							
				MTPM-P5x-1x18							
				MTPM-P7x-1x18							
				MTPM-0xx-1x18							
				MTPM-1xx-1x18							
				MTR(2)(P)-xxx-xxxxx*							
				MTRJ(P)-xxx-xxxxx							
				MTSN-P33-3BD18							
				<u>MTSN-P33-3BD18R</u>							
				MTSN-P33-3BD36	112427.00						
				<u>MTSN-P33-3BD36R</u>	112428.00						
				MTSP-P33-3BD18	112429.00						
				<u>MTSP-P33-3BD18R</u>	112430.00						
				MTSP-P33-3BD36	113019.00						
				<u>MTSP-P33-3BD36R</u>	113023.00						
				MTSN-P50-3BD18	113473.00						E2000
				<u>MTSN-P50-3BD18R</u>	113586.00						D390
				MTSN-P50-3BD36	113590.00						G580
				<u>MTSP-P50-3BD12</u>	113591.00				Y500		D391
				MTSP-P50-3BD18	113649.00				Y502		G581
				<u>MTSP-P50-3BD18R</u>	116644.00				Y360		K705
				MTSP-P50-3BD36	116645.00				Y362		K705
				<u>MTSP-P50-3BD36R</u>	119468.00				Y364		D392
				MTSN-P75-3BD18	119469.00				Y280		G582
				<u>MTSN-P75-3BD18R</u>	119471.00				Y281		K707
				MTSN-P75-3BD36	119475.00				Y282		D393A
				<u>MTSP-P75-3BD12</u>	119476.00			(...)56-S	Y592(-A772)		K708A
				MTSP-P75-3BD18	119478.00			(...)56C-S	Y534(-A772)		G583A
				<u>MTSP-P75-3BD18R</u>	119480.00				Y535(-A772)		K709A
				MTSP-P75-3BD36	119482.00				Y555(-A772)		D394A
				<u>MTSP-P75-3BD36R</u>	119483.00				Y556(-A772)		K721A
				MTSN-001-3BD18	191202.00				SY001		G584A
				<u>MTSN-001-3BD18R</u>	191204.00				SY003		D395A
				MTSN-001-3BD36	191205.00				SY004		G585A
				<u>MTSP-001-3BD18</u>	191206.00				SY005		K724A
				MTSP-001-3BD18R	191207.00				SY035		D396A
				<u>MTSP-001-3BD36</u>	191208.00						K725A
				MTSP-001-3BD36R	191560.00						J066A
				MTSN-1P5-3BD18	191561.00						
				<u>MTSN-1P5-3BD18R</u>	191562.00						
				MTSN-1P5-3BD36	191563.00						
				<u>MTSP-1P5-3BD18</u>	191564.00						
				MTSP-1P5-3BD18R	191569.00						
				<u>MTSP-1P5-3BD36</u>							
				MTSP-1P5-3BD36R							
MTSN-002-3BD18											
<u>MTSN-002-3BD18R</u>											
MTSN-002-3BD36											
<u>MTSP-002-3BD18</u>											
MTSP-002-3BD18R											
<u>MTSP-002-3BD36</u>											
MTSP-002-3BD36R											

\* IronHorse MTR2 56HC motors have double-punched bases to fit on slide base MTA-BASE-W56.

# STABLE™ Motor Slide Bases

STABLE Motor Slide Bases for 3-Phase Motors										
Part Number (MTA-BASE-xxx)	Price	Fits Frame Type	Product Wt. (lb)	Fits Motor						Drawing Links
				IronHorse	Leeson®	WEG (Part number ending in...)	Marathon			
					WashGuard®		microMAX, Max+, Black Max, Blue Max, SyMAX	XRI GP & NEMA Premium, Jet Pump	Globetrotter	
<a href="#">W143T</a>	\$26.00	143T/TC	4.6	MTCP2-001-3BD18(C) MTCP2-1P5-3BD36 MTSN-1P5-3BD36-14 MTSP-1P5-3BD36-14 MTSP-1P5-3BD36R-14	<a href="#">191487.00</a> <a href="#">191565.00</a>		<a href="#">Y536(-A772)</a>	<a href="#">E2001A</a> <a href="#">E2003</a>	-	<a href="#">PDF</a>
<a href="#">W145T</a>	\$26.00	145T/TC	5.1	MTCP2-001-3BD12 MTCP2-1P5-3BD18(C) MTCP2-002-3BD18(C) MTCP2-002-3BD36 MTSP-001-3BD12 MTSN-1P5-3BD18-14 MTSN-1P5-3BD18R-14 MTSP-1P5-3BD18-14 MTSP-1P5-3BD18R-14 MTSN-002-3BD18-14 MTSN-002-3BD18R-14 MTSN-002-3BD36-14 MTSP-002-3BD18-14 MTSP-002-3BD18R-14 MTSP-002-3BD36-14 MTSP-002-3BD36R-14	<a href="#">121866.00</a> <a href="#">121868.00</a> <a href="#">121870.00</a> <a href="#">122182.00</a> <a href="#">122184.00</a> <a href="#">122185.00</a> <a href="#">191490.00</a> <a href="#">191491.00</a> <a href="#">191570.00</a>	(...) <a href="#">145T-S</a> (...) <a href="#">145TC-S</a>	<a href="#">Y366</a> <a href="#">Y368</a> <a href="#">Y284</a> <a href="#">Y285</a> <a href="#">Y537(-A772)</a> <a href="#">Y538(-A772)</a> <a href="#">Y551(-A772)</a> <a href="#">Y557(-A772)</a>	<a href="#">E2002</a> <a href="#">E2004A</a> <a href="#">E2007A</a>	-	<a href="#">PDF</a>
<a href="#">W182T</a>	\$35.50	182T/TC	9.2	MTCP2-1P5-3BD12 MTCP2-003-3BD18(C) MTCP2-003-3BD36 MTSP-1P5-3BD12 MTSN-003-3BD18-18 MTSN-003-3BD36-18 MTSP-003-3BD18-18 MTSP-003-3BD36-18	<a href="#">132196.00</a> <a href="#">132198.00</a>		<a href="#">Y1999</a> <a href="#">Y286A</a> <a href="#">Y541A(-A772)</a> <a href="#">Y558A(-A772)</a> <a href="#">SY036</a> <a href="#">SY066</a>	<a href="#">E2009</a> <a href="#">E2010</a>	<a href="#">GT0010A</a> <a href="#">GT1010A</a>	<a href="#">PDF</a>
<a href="#">W184T</a>	\$35.50	184T/TC	10	MTCP2-002-3BD12 MTCP2-005-3BD18(C) MTCP2-005-3BD36 MTF-00x-1C18 MTSP-002-3BD12 MTSP-005-3BD18 MTSP-005-3BD36	<a href="#">132197.00</a> <a href="#">132200.00</a> <a href="#">132201.00</a> <a href="#">132440.00</a>		<a href="#">Y1372</a> <a href="#">Y287A</a> <a href="#">Y540(-A772)</a> <a href="#">Y543A(-A772)</a> <a href="#">Y559A(-A772)</a> <a href="#">E2012</a> <a href="#">E2013</a> <a href="#">SY007A</a> <a href="#">SY067</a>	-	<a href="#">GT0013A</a> <a href="#">GT1013A</a> <a href="#">GT1210A</a> <a href="#">GT1212A</a> <a href="#">GT1213A</a>	<a href="#">PDF</a>
<a href="#">W213T</a>	\$52.00	213T/TC	13	MTCP2-003-3BD12 MTCP2-7P5-3BD18(C) MTCP2-7P5-3BD36 MTSP-003-3BD12 MTSP-7P5-3BD18	<a href="#">140819.00</a> <a href="#">140822.00</a> <a href="#">141266.00</a>		<a href="#">Y994</a> <a href="#">Y542(-A772)</a> <a href="#">Y545(-A772)</a> <a href="#">Y560(-A772)</a> <a href="#">E2011</a> <a href="#">E2016A</a> <a href="#">E2011A</a> <a href="#">E2016B</a> <a href="#">SY068</a>	-	<a href="#">GT0016A</a> <a href="#">GT1016A</a> <a href="#">GT1216A</a>	<a href="#">PDF</a>
<a href="#">W215T</a>	\$52.00	215T/TC	15	MTCP2-005-3BD12 MTCP2-010-3BD18(C) MTCP2-010-3BD36 MTSP-005-3BD12 MTSP-010-3BD18	<a href="#">140820.00</a> <a href="#">140821.00</a>		<a href="#">Y996</a> <a href="#">Y544(-A772)</a> <a href="#">Y547(-A772)</a> <a href="#">Y561(-A772)</a> <a href="#">E2018</a> <a href="#">E2014A</a> <a href="#">E2018A</a> <a href="#">SY069</a>	-	<a href="#">GT0019A</a> <a href="#">GT1019A</a> <a href="#">GT1218A</a> <a href="#">GT1219A</a>	<a href="#">PDF</a>
<a href="#">W254T</a>	\$71.00	254T/TC	18	MTCP2-7P5-3BD12 MTCP2-015-3BD18(C) MTCP2-015-3BD36 MTSP-015-3BD18	-		<a href="#">Y546(-A772)</a> <a href="#">Y549(-A772)</a> <a href="#">Y562(-A772)</a>	-	<a href="#">GT0059</a> <a href="#">GT1022A</a> <a href="#">GT1222A</a>	<a href="#">PDF</a>

\* IronHorse MTR2 56HC motors have double-punched bases to fit on slide base MTA-BASE-W56.

# STABLE™ Motor Slide Bases

STABLE Motor Slide Bases for 3-Phase Motors										
Part Number (MTA-BASE- xxx)	Price	Fits Frame Type	Product Wt. (lb)	Fits Motor						Drawing Links
				IronHorse	Leeson®	WEG (Part number ending in...)	Marathon			
					WashGuard®		microMAX, Max+, Black Max, Blue Max, SyMAX	XRI GP & NEMA Premium, Jet Pump	Globetrotter	
<a href="#">W256T</a>	\$71.00	256T/ TC	19	MTCP2-010-3BD12 MTCP2-020-3BD18(C) MTCP2-020-3BD36 MTSP-020-3BD18	-		Y548(-A772) Y552(-A772) Y563(-A772)	-	GT0062 GT1025A GT1225A	<a href="#">PDF</a>
<a href="#">W284T</a>	\$79.00	284T/ TC	20	MTCP2-015-3BD12 MTCP2-025-3BD18(C)	-		Y553(-A772)	-	GT0065 GT1028A	<a href="#">PDF</a>
<a href="#">W286T</a>	\$79.00	286T/ TC	21	MTCP2-020-3BD12 MTCP2-030-3BD18(C)	-		Y393(-A772)	-	GT0067 GT1031A	<a href="#">PDF</a>
<a href="#">W324T</a>	\$116.00	324T/ TC	30	MTCP2-040-3BD18(C)	-		Y571(-A774) Y513(-A775)	-	GT0073 GT1034A	<a href="#">PDF</a>
<a href="#">W326T</a>	\$116.00	326T/ TC	31	MTCP2-050-3BD18(C)	-		Y572(-A774) Y514(-A775)	-	GT0077 GT1037A	<a href="#">PDF</a>
<a href="#">W364T</a>	\$158.00	364T/ TC	43	MTCP2-060-3BD18(C)	-		Y573(-A774) Y515(-A775)	-	GT1040A	<a href="#">PDF</a>
<a href="#">W365T</a>	\$158.00	365T/ TC	43	MTCP2-075-3BD18(C)	-		Y574(-A774) Y516(-A775)	-	GT1043A	<a href="#">PDF</a>
<a href="#">W404T</a>	\$193.00	404T/ TC	58	-	-		-	-	-	<a href="#">PDF</a>
<a href="#">W405T</a>	\$193.00	405T/ TC	60	MTCP2-100-3BD18(C)	-		Y575(-A774) Y517(-A775)	-	GT1046A	<a href="#">PDF</a>
<a href="#">W444T</a>	\$219.00	444T	63	MTCP2-125-3BD18	-		-	-	GT1049A	<a href="#">PDF</a>
<a href="#">W445T</a>	\$219.00	445T	65	MTCP2-150-3BD18	-		-	-	GT1052A	<a href="#">PDF</a>
<a href="#">W447T</a>	\$288.00	447T	89	MTCP2-200-3BD18	-		-	-	GT1055A	<a href="#">PDF</a>
<a href="#">W449T</a>	\$288.00	449T	94	MTCP2-250-3D18 MTCP2-300-3D18	-		-	-	-	<a href="#">PDF</a>

\* IronHorse MTR2 56HC motors have double-punched bases to fit on slide base [MTA-BASE-W56](#).

# STABLE™ Motor Slide Bases

## Mounting Slide Bases for 56 to 215T NEMA Motors Features

STABLE Motor Slide Bases for 1-phase Motors									
Part Number	Price	Fits Frame Type	Product Wt. (lb)	Fits Motor					
				IronHorse	Leeson®		Marathon		
					Washguard®	Marathon DP GP (NEMA Service Factor)	Marathon DP Air Compressor	Fan & Blower	Marathon TE GP 4-in-1
<a href="#"><u>MTA-BASE-W56</u></a>	\$14.00	56*	2.8	MTR2-xxx-1AB18 MTR2-xxx-1AB36 MTPM-xxx-1L18 MTPM-xxx-1M18	112431.00	<a href="#"><u>C158A</u></a>	D010 C169 C704 D017	<a href="#"><u>C216</u></a>	<a href="#"><u>G570</u></a>
					112527.00	<a href="#"><u>G915A</u></a>		<a href="#"><u>D311</u></a>	
					112528.00	<a href="#"><u>C175A</u></a>		<a href="#"><u>C1153</u></a>	<a href="#"><u>G571</u></a>
					112529.00	<a href="#"><u>C167A</u></a>		<a href="#"><u>C1155</u></a>	<a href="#"><u>D312</u></a>
					113583.00	<a href="#"><u>C179A</u></a>		<a href="#"><u>B319</u></a>	<a href="#"><u>G572</u></a>
					114311.00	<a href="#"><u>G937A</u></a>		<a href="#"><u>D118</u></a>	<a href="#"><u>D313</u></a>
					114313.00	<a href="#"><u>C185A</u></a>		<a href="#"><u>C1158</u></a>	<a href="#"><u>G573</u></a>
					114317.00	<a href="#"><u>C187A</u></a>		<a href="#"><u>C235</u></a>	<a href="#"><u>D314</u></a>
					191475.00	<a href="#"><u>C193A</u></a>		<a href="#"><u>D115</u></a>	<a href="#"><u>G574</u></a>
					191477.00	<a href="#"><u>E261A</u></a>		<a href="#"><u>C1160</u></a>	<a href="#"><u>D315</u></a>
					191479.00	<a href="#"><u>E268A</u></a>		<a href="#"><u>C1161</u></a>	<a href="#"><u>G575</u></a>
						<a href="#"><u>EG277A</u></a>		<a href="#"><u>B352</u></a>	<a href="#"><u>D316</u></a>
					<a href="#"><u>MTA-BASE-W143T</u></a>	\$26.00		143T / TC	4.6
<a href="#"><u>MTA-BASE-W145T</u></a>	\$26.00	145TC / TC	5.1	-	-	<a href="#"><u>C191</u></a> <a href="#"><u>I127</u></a> <a href="#"><u>C194</u></a>	-	-	-
<a href="#"><u>MTA-BASE-W182T</u></a>	\$35.50	182T / TC	9.2	-	-	-	-	-	-
<a href="#"><u>MTA-BASE-W184T</u></a>	\$35.50	184 / TC	10	MTF-00x-1C18	-	-	<a href="#"><u>Z502</u></a>	-	-
<a href="#"><u>MTA-BASE-W213T</u></a>	\$52.00	213T / TC	13	-	-	-	-	-	-
<a href="#"><u>MTA-BASE-W215T</u></a>	\$52.00	215T T TC	15	-	-	-	-	-	-

\* IronHorse MTR2 56HC motors have double-punched bases to fit on slide base [MTA-BASE-W56](#).