

**marathon**<sup>®</sup>  
Motors

# Blue Max<sup>®</sup> 2000 Vector Duty Motors



## Motor Shipping Schedule \*

Same or one day \* Up to 7 days Up to 10 days

Color indicates shipping lead time in business days. Check stock status online.

\* Certain heavy and oversized items can be shipped only via LTL.

Check our website for current shipping method constraints by part number.

## Features

- Class H MAX GUARD<sup>®</sup> insulation system
- Constant torque operation from 0 to base speed on vector drive, including TEFC (on V/Hz drives, TEFC motors are limited to 20:1 constant torque)
- Constant horsepower operation to 1.5 times base RPM
- Continuous duty at 40°C ambient
- Optimized for operation with IGBT inverter (NEMA Design A)
- C-Face foot mount through 100 HP (NEMA frame type TC motors)
- Class F N/C thermostats (one per phase)
- Cast-iron frame and brackets
- Utilizes double shielded ball bearings with Exxon Polyrex<sup>®</sup> EM grease
- "Class B" temperature rise on blower-cooled motors
- F1 standard conduit box location, field reversible to F2
- Available with optional encoder installed on opposite drive end
- Electrically reversible
- UL Recognized, CSA Certified, and CE Mark
- Three year warranty (through Marathon Electric)

## Applications

Designed for inverter or vector applications. Typical uses include: material handling, machine tools, conveyors, crane and hoist, metal processing, test stands, pumps, compressors, textile processing, and other industrial machinery installed in dusty or dirty environments where cast-iron construction is required.

## Motor Specifications

Part Number *	Price	HP	Base RPM	Volts	Encl.	NEMA Frame	Model No.	F.L. Amps	Weight (lb) *	Drawing Links
<a href="#">Y571</a>	\$6,403.00	40	1800	230/460	TEFC	324T	324THFPA8028	100 / 50.0	540	<a href="#">PDF</a>
<a href="#">Y513</a>	\$7,984.00	40	1800	230/460	TEBC	324TC	324THFPA8038	100 / 50.0	620	<a href="#">PDF</a>
<a href="#">Y572</a>	\$7,922.00	50	1800	230/460	TEFC	326T	326THFS8028	121 / 60.5	540	<a href="#">PDF</a>
<a href="#">Y514</a>	\$9,152.00	50	1800	230/460	TEBC	326TC	326THFPA8038	120 / 60.0	640	<a href="#">PDF</a>
<a href="#">Y573</a>	\$10,213.00	60	1800	230/460	TEFC	364T	364THFS8036	147 / 73.5	965	<a href="#">PDF</a>
<a href="#">Y515</a>	\$11,204.00	60	1800	230/460	TEBC	364TC	364THFS8046	147 / 73.5	1062	<a href="#">PDF</a>
<a href="#">Y574</a>	\$11,704.00	75	1800	230/460	TEFC	365T	365THFS8036	184 / 92.0	1006	<a href="#">PDF</a>
<a href="#">Y516</a>	\$13,555.00	75	1800	230/460	TEBC	365TC	365THFS8046	180 / 90.0	1106	<a href="#">PDF</a>
<a href="#">Y575</a>	Retired	100	1800	230/460	TEFC	405T	405THFS8036	230 / 115	1308	<a href="#">PDF</a>
<a href="#">Y517</a>	Retired	100	1800	230/460	TEBC	405TC	405THFS8046	230 / 115	1429	<a href="#">PDF</a>

\* Refer to the Motor Shipping Schedule table for shipping information

Note: Please review the AutomationDirect Terms & Conditions for warranty and service on this product.

Warranty service can be arranged through Marathon Electric service centers. See list of service centers on our Web site at [www.AutomationDirect.com](http://www.AutomationDirect.com).

## Performance Data (460 Volt)

Part Number	HP	F.L. RPM	F.L. Amps @460V	N.L. Amps @460V	F.L. Torque (lb-ft)	B.D. Torque (lb-ft)	Max. CHP RPM*	Max. Safe RPM	F.L. Effic.	F.L. Power Factor	Rotor Inertia (lb-ft <sup>2</sup> )	Ohms/Ph - Equiv. Wye Circuit (460 VAC) (at rated operating temp. in 40° C ambient)				
												R1	R2	X1	X2	XM
<a href="#">Y571</a>	40	1770	50.0	20.0	118.0	320.0	2642	3600	91.7	81.5	5.000	0.082	0.077	0.435	0.592	10.280
<a href="#">Y513</a>	40	1770	50.0	20.0	118.0	320.0	2642	3600	91.7	81.5	5.000	0.082	0.077	0.435	0.592	10.280
<a href="#">Y572</a>	50	1780	60.5	26.5	148.0	400.0	2675	3600	92.4	81.0	10.000	0.063	0.046	0.424	0.596	10.000
<a href="#">Y514</a>	50	1765	60.0	25.0	149.0	525.0	3525	3600	93.0	83.5	5.500	0.088	0.092	0.437	0.358	9.662
<a href="#">Y573</a>	60	1782	73.5	28.0	177.0	525.0	2665	2700	91.7	83.0	14.500	0.063	0.042	0.338	0.455	8.850
<a href="#">Y515</a>	60	1782	74.0	28.0	177.0	525.0	2665	2700	91.7	83.0	14.500	0.063	0.042	0.338	0.455	8.850
<a href="#">Y574</a>	75	1780	92.0	40.0	221.0	740.0	2665	2700	94.1	82.0	16.500	0.047	0.031	0.267	0.313	6.275
<a href="#">Y516</a>	75	1780	90.0	33.0	222.0	645.0	2685	2700	93.0	84.0	16.000	0.054	0.038	0.299	0.420	8.203
<a href="#">Y575</a>	100	1785	115.0	38.0	295.0	900.0	2675	2700	94.5	86.5	27.500	0.034	0.021	0.236	0.219	6.820
<a href="#">Y517</a>	100	1785	115.0	38.0	295.0	900.0	2675	2700	94.5	86.5	27.500	0.034	0.021	0.236	0.219	6.816

\* Maximum Constant HP RPM is for direct coupled loads.

# Blue Max<sup>®</sup> 2000 Vector Duty Motors

Blower Motor Performance Data (for TEBC Blower Cooled Motors)										
Blower Fits Motor Type				Blower Motor Characteristics						
Part Number	Model No.	NEMA Frame	Encl.	HP (60/50Hz)	RPM (60/50Hz)	Volts	Hz	F.L. Amps	Sound Pressure	Watts
<b>Y513</b>	324THFPA8038	324TC	TEBC	1 / 0.75	1735 / 1460	230/460 – 190/380	60 / 50	3.0 / 1.5	40	850
<b>Y513-A775</b>										850
<b>Y514</b>	326THFPA8038	326TC								851
<b>Y514-A775</b>										852
<b>Y515</b>	364THFS8046	364TC						3.7 / 1.85	68	853
<b>Y515-A775</b>										854
<b>Y516</b>	365THFS8046	365TC								855
<b>Y516-A775</b>										856
<b>Y517</b>	405THFS8046	405TC						857		
<b>Y517-A775</b>								858		

## Encoder shaft-mounted to motor\*

A Dynapar Model HS35/HSD38 shaft-mounted encoder can be supplied pre-installed on the selected motor, either TEFC or TEBC type, as shown in the table below. The encoder requires a 5–26 VDC power source\*\*, provides a count of 1024 pulses per revolution (PPR) differential line driver output, and includes a 10-pin connector. A mating connector is supplied with TEFC (totally enclosed fan cooled) motor encoders; the customer is responsible for supplying the wiring cable and determining the connections to the equipment being used in the application. The encoder adds 1 inch to the TEFC motor's "C" dimension as shown in the dimensional diagram.

The TEBC (totally enclosed blower cooled) motor encoders have the mating connector pre-wired, installed and ending in a pigtail located inside a conduit box mounted on the motor. (See Figure 2 under the motor dimensional information on the next page.) The customer is responsible for determining the connections to the equipment being used in their application.

\* If connecting the motor to a DURApulse AC drive, a **GS3-FB Feedback Card** is required for the drive.

\*\* When used with a **GS3-FB** equipped DURApulse AC drive, the **GS3-FB** will supply power to the encoder.

Motor Shipping Schedule *		
Same or one day *	Up to 7 days	Up to 10 days

Color indicates shipping lead time in business days. Check stock status online.

\* Certain heavy and oversized items can be shipped only via LTL.

Check our website for current shipping method constraints by part number.

Motor Accessories		
Part Number	Price	Description *
<b>A774</b>	\$1,149.00	Encoder kit, replacement, for Blue Max TEFC encoder motors. Dynapar HS35 encoder, 5–26 VDC input, Line Driver output, 1024 pulses per revolution, 1-in bore.
<b>A775</b>	\$1,149.00	Encoder kit, replacement, for Blue Max TEBC encoder motors. Dynapar HSD38 encoder, 5–26 VDC input, Line Driver output, 1024 pulses per revolution. 1-in bore.

\* Replacement/spare encoder kit for Blue Max Y5xx-A774 and Y5xx-A775 motors; can also be field installed on Blue Max Y5xx motors; select appropriate encoder kit per motor fan type (TEFC or TEBC).

Motor with Pre-installed Shaft-Mounted Encoder					
Part Number	Price	HP	Part Number	Price	HP
<b>Y571-A774</b>	Retired	40 (TEFC)	<b>Y574-A774</b>	\$12,636.00	75 (TEFC)
<b>Y513-A775</b>	\$9,117.00	40 (TEBC)	<b>Y516-A775</b>	\$14,433.00	75 (TEBC)
<b>Y572-A774</b>	\$9,055.00	50 (TEFC)	<b>Y575-A774</b>	Retired	100 (TEFC)
<b>Y514-A775</b>	\$10,266.00	50 (TEBC)	<b>Y517-A775</b>	Retired	100 (TEBC)
<b>Y573-A774</b>	\$11,305.00	60 (TEFC)			
<b>Y515-A775</b>	\$12,281.00	60 (TEBC)			

Note: Please review the AutomationDirect Terms & Conditions for warranty and service on this product. Warranty service can be arranged through numerous Marathon Electric service centers. See list of service centers on our Web site at [www.AutomationDirect.com](http://www.AutomationDirect.com).

## Encoder Connector Pinout

Note: A mating connector is supplied loose for the customer's wiring on encoder equipped TEFC motors and a mating connector pre-wired to a cable and pigtailed in a conduit box on encoder equipped TEBC motors.

Prewired cables TRDA-25CBL-VWD-xx (10, 20, & 30 ft) and replacement MS connectors

TRDA-25CON-VWD are available from AutomationDirect.

Dynapar HS35/HSD38 Encoder

PIN TRDA-25CBL-VWD-xx Cable Wire Color for HS35 Encoders

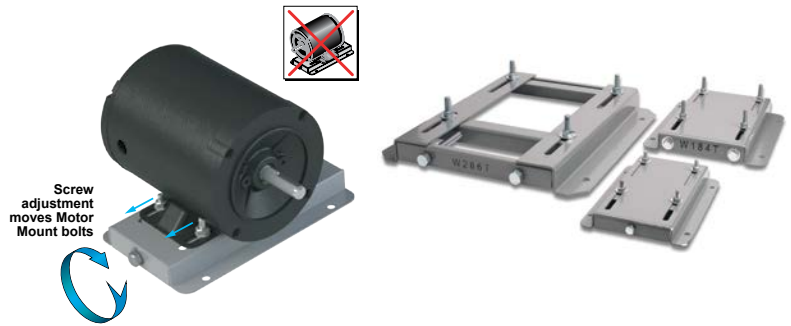
(HSD38 colors may be different)



# STABLE™ Motor Slide Bases

## Mounting Slide Bases for 56 to 449T NEMA Motors Features

- Allows adjustment of motor mounting position
- Slide direction is perpendicular to motor shaft
- Double adjusting screws for frames 182T-449T
- Manufactured to precise dimensional standards
- Dimensionally interchangeable with existing major makes
- Heavy-duty steel construction
- Painted with oven-baked primer for better adhesion of customer's paint
- All "D" bolts (motor mounting bolts) are fixed to the exact motor foot pattern
- All "D" bolts are welded into position to prevent spinning and dropping from slots
- Nuts and washers are provided for securing the motor to the slide base



### STABLE Motor Slide Bases for 3-Phase Motors

Part Number (MTA-BASE-xxx)	Price	Fits Frame Type	Product Wt. (lb)	Fits Motor					Drawing Links				
				IronHorse	Leeson®	WEG (Part number ending in...)	Marathon						
					WashGuard®		microMAX, Max +, Black Max, Blue Max, SyMAX	XRI GP & NEMA Premium, Jet Pump		Globetrotter			
<b>W56</b>	\$14.00	56*	2.8	MTPM-P3x-1x18									
				MTPM-P5x-1x18									
				MTPM-P7x-1x18									
				MTPM-0xx-1x18									
				MTPM-1xx-1x18									
				MTR(2)(P)-xxx-xxxxx*									
				MTRJ(P)-xxx-xxxxx									
				MTSN-P33-3BD18									
				<a href="#">MTSN-P33-3BD18R</a>									
				<a href="#">MTSN-P33-3BD36</a>				112427.00					
				<a href="#">MTSN-P33-3BD36R</a>				112428.00					
				<a href="#">MTSP-P33-3BD18</a>				112429.00					
				<a href="#">MTSP-P33-3BD18R</a>				112430.00					
				<a href="#">MTSP-P33-3BD36</a>				113019.00					
				<a href="#">MTSP-P33-3BD36R</a>				113023.00					
				<a href="#">MTSN-P50-3BD18</a>				113473.00					
				<a href="#">MTSN-P50-3BD18R</a>				113586.00				E2000	
				<a href="#">MTSN-P50-3BD36</a>				113590.00				D390	
				<a href="#">MTSP-P50-3BD12</a>				113591.00				G580	
				<a href="#">MTSP-P50-3BD18</a>				113649.00				D391	
				<a href="#">MTSP-P50-3BD18R</a>				116644.00				G581	
				<a href="#">MTSP-P50-3BD36</a>				116645.00				K705	
				<a href="#">MTSP-P50-3BD36R</a>				119468.00				D392	
				<a href="#">MTSN-P75-3BD18</a>				119469.00				G582	
				<a href="#">MTSN-P75-3BD18R</a>				119471.00				K707	
				<a href="#">MTSN-P75-3BD36</a>				119475.00				D393A	
				<a href="#">MTSP-P75-3BD12</a>				119476.00		(...)56-S		K708A	
				<a href="#">MTSP-P75-3BD18</a>				119478.00		(...)56C-S		G583A	
				<a href="#">MTSP-P75-3BD18R</a>				119480.00				K709A	
				<a href="#">MTSP-P75-3BD36</a>				119482.00				D394A	
				<a href="#">MTSP-P75-3BD36R</a>				119483.00				K721A	
				<a href="#">MTSN-001-3BD18</a>				191202.00				G584A	
				<a href="#">MTSN-001-3BD18R</a>				191204.00				D395A	
				<a href="#">MTSN-001-3BD36</a>				191205.00				G585A	
				<a href="#">MTSP-001-3BD18</a>				191206.00				K724A	
				<a href="#">MTSP-001-3BD18R</a>				191207.00				D396A	
				<a href="#">MTSP-001-3BD36</a>				191208.00				K725A	
				<a href="#">MTSP-001-3BD36R</a>				191560.00				J066A	
				<a href="#">MTSN-1P5-3BD18</a>				191561.00					
				<a href="#">MTSN-1P5-3BD18R</a>				191562.00					
				<a href="#">MTSN-1P5-3BD36</a>				191563.00					
				<a href="#">MTSP-1P5-3BD18</a>				191564.00					
				<a href="#">MTSP-1P5-3BD18R</a>				191569.00					
				<a href="#">MTSP-1P5-3BD36</a>									
				<a href="#">MTSP-1P5-3BD36R</a>									
				<a href="#">MTSN-002-3BD18</a>									
				<a href="#">MTSN-002-3BD18R</a>									
				<a href="#">MTSN-002-3BD36</a>									
				<a href="#">MTSP-002-3BD18</a>									
				<a href="#">MTSP-002-3BD18R</a>									
<a href="#">MTSP-002-3BD36</a>													
<a href="#">MTSP-002-3BD36R</a>													

\* IronHorse MTR2 56HC motors have double-punched bases to fit on slide base MTA-BASE-W56.

# STABLE™ Motor Slide Bases

STABLE Motor Slide Bases for 3-Phase Motors										
Part Number (MTA-BASE-xxx)	Price	Fits Frame Type	Product Wt. (lb)	Fits Motor						Drawing Links
				IronHorse	Leeson®	WEG (Part number ending in...)	Marathon			
					WashGuard®		microMAX, Max+, Black Max, Blue Max, SyMAX	XRI GP & NEMA Premium, Jet Pump	Globetrotter	
<a href="#">W143T</a>	\$26.00	143T/TC	4.6	<a href="#">MTCP2-001-3BD18(C)</a> <a href="#">MTCP2-1P5-3BD36</a> <a href="#">MTSN-1P5-3BD36-14</a> <a href="#">MTSP-1P5-3BD36-14</a> <a href="#">MTSP-1P5-3BD36R-14</a>	<a href="#">191487.00</a> <a href="#">191565.00</a>		<a href="#">Y536(-A772)</a>	<a href="#">E2001A</a> <a href="#">E2003</a>	-	<a href="#">PDF</a>
<a href="#">W145T</a>	\$26.00	145T/TC	5.1	<a href="#">MTCP2-001-3BD12</a> <a href="#">MTCP2-1P5-3BD18(C)</a> <a href="#">MTCP2-002-3BD18(C)</a> <a href="#">MTCP2-002-3BD36</a> <a href="#">MTSP-001-3BD12</a> <a href="#">MTSN-1P5-3BD18-14</a> <a href="#">MTSN-1P5-3BD18R-14</a> <a href="#">MTSP-1P5-3BD18-14</a> <a href="#">MTSP-1P5-3BD18R-14</a> <a href="#">MTSN-002-3BD18-14</a> <a href="#">MTSN-002-3BD18R-14</a> <a href="#">MTSN-002-3BD36-14</a> <a href="#">MTSP-002-3BD18-14</a> <a href="#">MTSP-002-3BD18R-14</a> <a href="#">MTSP-002-3BD36-14</a> <a href="#">MTSP-002-3BD36R-14</a>	<a href="#">121866.00</a> <a href="#">121868.00</a> <a href="#">121870.00</a> <a href="#">122182.00</a> <a href="#">122184.00</a> <a href="#">122185.00</a> <a href="#">191490.00</a> <a href="#">191491.00</a> <a href="#">191570.00</a>	(...)145T-S (...)145TC-S	<a href="#">Y366</a> <a href="#">Y368</a> <a href="#">Y284</a> <a href="#">Y285</a> <a href="#">Y537</a> <a href="#">Y538(-A772)</a> <a href="#">Y551(-A772)</a>	<a href="#">E2002</a> <a href="#">E2004A</a> <a href="#">E2007A</a>	-	<a href="#">PDF</a>
<a href="#">W182T</a>	\$35.50	182T/TC	9.2	<a href="#">MTCP2-1P5-3BD12</a> <a href="#">MTCP2-003-3BD18(C)</a> <a href="#">MTCP2-003-3BD36</a> <a href="#">MTSP-1P5-3BD12</a> <a href="#">MTSN-003-3BD18-18</a> <a href="#">MTSN-003-3BD36-18</a> <a href="#">MTSP-003-3BD18-18</a> <a href="#">MTSP-003-3BD36-18</a>	<a href="#">132196.00</a> <a href="#">132198.00</a>		<a href="#">Y1999</a> <a href="#">Y286A</a> <a href="#">Y541A(-A772)</a> <a href="#">SY036</a> <a href="#">SY066</a>	<a href="#">E2009</a> <a href="#">E2010</a>	<a href="#">GT0010A</a> <a href="#">GT1010A</a>	<a href="#">PDF</a>
<a href="#">W184T</a>	\$35.50	184T/TC	10	<a href="#">MTCP2-002-3BD12</a> <a href="#">MTCP2-005-3BD18(C)</a> <a href="#">MTCP2-005-3BD36</a> <a href="#">MTF-00x-1C18</a> <a href="#">MTSP-002-3BD12</a> <a href="#">MTSP-005-3BD18</a> <a href="#">MTSP-005-3BD36</a>	<a href="#">132197.00</a> <a href="#">132200.00</a> <a href="#">132201.00</a> <a href="#">132440.00</a>		<a href="#">Y1372</a> <a href="#">Y287A</a> <a href="#">Y540(-A772)</a> <a href="#">Y543A(-A772)</a> <a href="#">E2012</a> <a href="#">E2013</a> <a href="#">SY007A</a> <a href="#">SY067</a>	-	<a href="#">GT0013A</a> <a href="#">GT1013A</a> <a href="#">GT1210A</a> <a href="#">GT1212A</a> <a href="#">GT1213A</a>	<a href="#">PDF</a>
<a href="#">W213T</a>	\$52.00	213T/TC	13	<a href="#">MTCP2-003-3BD12</a> <a href="#">MTCP2-7P5-3BD18(C)</a> <a href="#">MTCP2-7P5-3BD36</a> <a href="#">MTSP-003-3BD12</a> <a href="#">MTSP-7P5-3BD18</a>	<a href="#">140819.00</a> <a href="#">140822.00</a> <a href="#">141266.00</a>		<a href="#">Y994</a> <a href="#">Y542(-A772)</a> <a href="#">Y545(-A772)</a> <a href="#">E2011</a> <a href="#">E2016A</a> <a href="#">E2011A</a> <a href="#">E2016B</a> <a href="#">SY068</a>	-	<a href="#">GT0016A</a> <a href="#">GT1016A</a> <a href="#">GT1216A</a>	<a href="#">PDF</a>
<a href="#">W215T</a>	\$52.00	215T/TC	15	<a href="#">MTCP2-005-3BD12</a> <a href="#">MTCP2-010-3BD18(C)</a> <a href="#">MTCP2-010-3BD36</a> <a href="#">MTSP-005-3BD12</a> <a href="#">MTSP-010-3BD18</a>	<a href="#">140820.00</a> <a href="#">140821.00</a>		<a href="#">Y996</a> <a href="#">Y544(-A772)</a> <a href="#">Y547(-A772)</a> <a href="#">E2018</a> <a href="#">E2014A</a> <a href="#">E2018A</a> <a href="#">SY069</a>	-	<a href="#">GT0019A</a> <a href="#">GT1019A</a> <a href="#">GT1218A</a> <a href="#">GT1219A</a>	<a href="#">PDF</a>
<a href="#">W254T</a>	\$71.00	254T/TC	18	<a href="#">MTCP2-7P5-3BD12</a> <a href="#">MTCP2-015-3BD18(C)</a> <a href="#">MTCP2-015-3BD36</a> <a href="#">MTSP-015-3BD18</a>	-		<a href="#">Y546(-A772)</a> <a href="#">Y549(-A772)</a>	-	<a href="#">GT0059</a> <a href="#">GT1022A</a> <a href="#">GT1222A</a>	<a href="#">PDF</a>

\* IronHorse MTR2 56HC motors have double-punched bases to fit on slide base [MTA-BASE-W56](#).

# STABLE™ Motor Slide Bases

STABLE Motor Slide Bases for 3-Phase Motors										
Part Number (MTA-BASE- xxx)	Price	Fits Frame Type	Product Wt. (lb)	Fits Motor						Drawing Links
				IronHorse	Leeson®	WEG (Part number ending in...)	Marathon			
					WashGuard®		microMAX, Max+, Black Max, Blue Max, SyMAX	XRI GP & NEMA Premium, Jet Pump	Globetrotter	
<a href="#">W256T</a>	\$71.00	256T/ TC	19	MTCP2-010-3BD12 MTCP2-020-3BD18(C) MTCP2-020-3BD36 MTSP-020-3BD18	-		Y548(-A774) Y552	-	GT0062 GT1025A GT1225A	<a href="#">PDF</a>
<a href="#">W284T</a>	\$79.00	284T/ TC	20	MTCP2-015-3BD12 MTCP2-025-3BD18(C)	-		-	-	GT0065 GT1028A	<a href="#">PDF</a>
<a href="#">W286T</a>	\$79.00	286T/ TC	21	MTCP2-020-3BD12 MTCP2-030-3BD18(C)	-		-	-	GT0067 GT1031A	<a href="#">PDF</a>
<a href="#">W324T</a>	\$116.00	324T/ TC	30	MTCP2-040-3BD18(C)	-		Y571(-A774) Y513(-A775)	-	GT0073 GT1034A	<a href="#">PDF</a>
<a href="#">W326T</a>	\$116.00	326T/ TC	31	MTCP2-050-3BD18(C)	-		Y572(-A774) Y514(-A775)	-	GT0077 GT1037A	<a href="#">PDF</a>
<a href="#">W364T</a>	\$158.00	364T/ TC	43	MTCP2-060-3BD18(C)	-		Y573(-A774) Y515(-A775)	-	GT1040A	<a href="#">PDF</a>
<a href="#">W365T</a>	\$158.00	365T/ TC	43	MTCP2-075-3BD18(C)	-		Y574(-A774) Y516(-A775)	-	GT1043A	<a href="#">PDF</a>
<a href="#">W404T</a>	\$193.00	404T/ TC	58	-	-		-	-	-	<a href="#">PDF</a>
<a href="#">W405T</a>	\$193.00	405T/ TC	60	MTCP2-100-3BD18(C)	-		Y575(-A774) Y517(-A775)	-	GT1046A	<a href="#">PDF</a>
<a href="#">W444T</a>	\$219.00	444T	63	MTCP2-125-3BD18	-		-	-	GT1049A	<a href="#">PDF</a>
<a href="#">W445T</a>	\$219.00	445T	65	MTCP2-150-3BD18	-		-	-	GT1052A	<a href="#">PDF</a>
<a href="#">W447T</a>	\$288.00	447T	89	MTCP2-200-3BD18	-		-	-	GT1055A	<a href="#">PDF</a>
<a href="#">W449T</a>	\$288.00	449T	94	MTCP2-250-3D18 MTCP2-300-3D18	-		-	-	-	<a href="#">PDF</a>

\* IronHorse MTR2 56HC motors have double-punched bases to fit on slide base [MTA-BASE-W56](#).

# STABLE™ Motor Slide Bases

## Mounting Slide Bases for 56 to 215T NEMA Motors Features

STABLE Motor Slide Bases for 1-phase Motors									
Part Number	Price	Fits Frame Type	Product Wt. (lb)	Fits Motor					
				IronHorse	Leeson®	Marathon			
					Washguard®	Marathon DP GP (NEMA Service Factor)	Marathon DP Air Compressor	Fan & Blower	Marathon TE GP 4-in-1
<a href="#"><u>MTA-BASE-W56</u></a>	\$14.00	56*	2.8	MTR2-xxx-1AB18 MTR2-xxx-1AB36 MTPM-xxx-1L18 MTPM-xxx-1M18	112431.00	<a href="#"><u>C158A</u></a>	D010 C169 C704 D017	<a href="#"><u>C216</u></a>	<a href="#"><u>G570</u></a>
					112527.00	<a href="#"><u>G915A</u></a>		<a href="#"><u>D311</u></a>	
					112528.00	<a href="#"><u>C175A</u></a>		<a href="#"><u>C1153</u></a>	<a href="#"><u>G571</u></a>
					112529.00	<a href="#"><u>C167A</u></a>		<a href="#"><u>C1155</u></a>	<a href="#"><u>D312</u></a>
					113583.00	<a href="#"><u>C179A</u></a>		<a href="#"><u>B319</u></a>	<a href="#"><u>G572</u></a>
					114311.00	<a href="#"><u>G937A</u></a>		<a href="#"><u>D118</u></a>	<a href="#"><u>D313</u></a>
					114313.00	<a href="#"><u>C185A</u></a>		<a href="#"><u>C1158</u></a>	<a href="#"><u>G573</u></a>
					114317.00	<a href="#"><u>C187A</u></a>		<a href="#"><u>C235</u></a>	<a href="#"><u>D314</u></a>
					191475.00	<a href="#"><u>C193A</u></a>		<a href="#"><u>D115</u></a>	<a href="#"><u>G574</u></a>
					191477.00	<a href="#"><u>E261A</u></a>		<a href="#"><u>C1160</u></a>	<a href="#"><u>D315</u></a>
					191479.00	<a href="#"><u>E268A</u></a>		<a href="#"><u>C1161</u></a>	<a href="#"><u>G575</u></a>
						<a href="#"><u>EG277A</u></a>		<a href="#"><u>B352</u></a>	<a href="#"><u>D316</u></a>
					<a href="#"><u>MTA-BASE-W143T</u></a>	\$26.00		143T / TC	4.6
<a href="#"><u>MTA-BASE-W145T</u></a>	\$26.00	145TC / TC	5.1	-	-	<a href="#"><u>C191</u></a> <a href="#"><u>I127</u></a> <a href="#"><u>C194</u></a>	-	-	-
<a href="#"><u>MTA-BASE-W182T</u></a>	\$35.50	182T / TC	9.2	-	-	-	-	-	-
<a href="#"><u>MTA-BASE-W184T</u></a>	\$35.50	184 / TC	10	MTF-00x-1C18	-	-	<a href="#"><u>Z502</u></a>	-	-
<a href="#"><u>MTA-BASE-W213T</u></a>	\$52.00	213T / TC	13	-	-	-	-	-	-
<a href="#"><u>MTA-BASE-W215T</u></a>	\$52.00	215T T TC	15	-	-	-	-	-	-

\* IronHorse MTR2 56HC motors have double-punched bases to fit on slide base [MTA-BASE-W56](#).