

Blue Max[®] 2000

Vector Duty Motors



Features

- Class H MAX GUARD[®] insulation system
- Constant torque operation from 0 to base speed on vector drive, including TEFC (on V/Hz drives, TEFC motors are limited to 20:1 constant torque)
- Constant horsepower operation to 1.5 times base RPM
- Continuous duty at 40°C ambient
- Optimized for operation with IGBT inverter (NEMA Design A)
- C-Face foot mount through 100 HP (NEMA frame type TC motors)
- Class F N/C thermostats (one per phase)
- Cast-iron frame and brackets
- Utilizes double shielded ball bearings with Exxon Polyrex[®] EM grease
- "Class B" temperature rise on blower-cooled motors
- F1 standard conduit box location, field reversible to F2
- Available with optional encoder installed on opposite drive end
- Electrically reversible
- UL Recognized, CSA Certified, and CE Mark
- Three year warranty (through Marathon Electric)

Motor Shipping Schedule *

Same or one day * Up to 7 days Up to 10 days

Color indicates shipping lead time in business days. Check stock status online.

* Certain heavy and oversized items can be shipped only via LTL.

Check our website for current shipping method constraints by part number.

Applications

Designed for inverter or vector applications. Typical uses include: material handling, machine tools, conveyors, crane and hoist, metal processing, test stands, pumps, compressors, textile processing, and other industrial machinery installed in dusty or dirty environments where cast-iron construction is required.

Motor Specifications

| Part Number * | Price | HP | Base RPM | Volts | Encl. | NEMA Frame | Model No. | F.L. Amps | Weight (lb) * | Drawing Links |
|----------------------|-------------|-----|----------|---------|-------|------------|--------------|------------|---------------|---------------------|
| Y571 | \$6,403.00 | 40 | 1800 | 230/460 | TEFC | 324T | 324THFPA8028 | 100 / 50.0 | 540 | PDF |
| Y513 | \$7,984.00 | 40 | 1800 | 230/460 | TEBC | 324TC | 324THFPA8038 | 100 / 50.0 | 620 | PDF |
| Y572 | \$7,922.00 | 50 | 1800 | 230/460 | TEFC | 326T | 326THFS8028 | 121 / 60.5 | 540 | PDF |
| Y514 | \$9,152.00 | 50 | 1800 | 230/460 | TEBC | 326TC | 326THFPA8038 | 120 / 60.0 | 640 | PDF |
| Y573 | \$10,213.00 | 60 | 1800 | 230/460 | TEFC | 364T | 364THFS8036 | 147 / 73.5 | 965 | PDF |
| Y515 | \$11,204.00 | 60 | 1800 | 230/460 | TEBC | 364TC | 364THFS8046 | 147 / 73.5 | 1062 | PDF |
| Y574 | \$11,704.00 | 75 | 1800 | 230/460 | TEFC | 365T | 365THFS8036 | 184 / 92.0 | 1006 | PDF |
| Y516 | \$13,555.00 | 75 | 1800 | 230/460 | TEBC | 365TC | 365THFS8046 | 180 / 90.0 | 1106 | PDF |
| Y575 | Retired | 100 | 1800 | 230/460 | TEFC | 405T | 405THFS8036 | 230 / 115 | 1308 | PDF |
| Y517 | Retired | 100 | 1800 | 230/460 | TEBC | 405TC | 405THFS8046 | 230 / 115 | 1429 | PDF |

* Refer to the Motor Shipping Schedule table for shipping information

Note: Please review the AutomationDirect Terms & Conditions for warranty and service on this product.

Warranty service can be arranged through Marathon Electric service centers. See list of service centers on our Web site at www.AutomationDirect.com.

Performance Data (460 Volt)

| Part Number | HP | F.L. RPM | F.L. Amps @460V | N.L. Amps @460V | F.L. Torque (lb-ft) | B.D. Torque (lb-ft) | Max. CHP RPM* | Max. Safe RPM | F.L. Effic. | F.L. Power Factor | Rotor Inertia (lb-ft ²) | Ohms/Ph - Equiv. Wye Circuit (460 VAC) (at rated operating temp. in 40° C ambient) | | | | |
|----------------------|-----|----------|-----------------|-----------------|---------------------|---------------------|---------------|---------------|-------------|-------------------|-------------------------------------|--|-------|-------|-------|--------|
| | | | | | | | | | | | | R1 | R2 | X1 | X2 | XM |
| Y571 | 40 | 1770 | 50.0 | 20.0 | 118.0 | 320.0 | 2642 | 3600 | 91.7 | 81.5 | 5.000 | 0.082 | 0.077 | 0.435 | 0.592 | 10.280 |
| Y513 | 40 | 1770 | 50.0 | 20.0 | 118.0 | 320.0 | 2642 | 3600 | 91.7 | 81.5 | 5.000 | 0.082 | 0.077 | 0.435 | 0.592 | 10.280 |
| Y572 | 50 | 1780 | 60.5 | 26.5 | 148.0 | 400.0 | 2675 | 3600 | 92.4 | 81.0 | 10.000 | 0.063 | 0.046 | 0.424 | 0.596 | 10.000 |
| Y514 | 50 | 1765 | 60.0 | 25.0 | 149.0 | 525.0 | 3525 | 3600 | 93.0 | 83.5 | 5.500 | 0.088 | 0.092 | 0.437 | 0.358 | 9.662 |
| Y573 | 60 | 1782 | 73.5 | 28.0 | 177.0 | 525.0 | 2665 | 2700 | 91.7 | 83.0 | 14.500 | 0.063 | 0.042 | 0.338 | 0.455 | 8.850 |
| Y515 | 60 | 1782 | 74.0 | 28.0 | 177.0 | 525.0 | 2665 | 2700 | 91.7 | 83.0 | 14.500 | 0.063 | 0.042 | 0.338 | 0.455 | 8.850 |
| Y574 | 75 | 1780 | 92.0 | 40.0 | 221.0 | 740.0 | 2665 | 2700 | 94.1 | 82.0 | 16.500 | 0.047 | 0.031 | 0.267 | 0.313 | 6.275 |
| Y516 | 75 | 1780 | 90.0 | 33.0 | 222.0 | 645.0 | 2685 | 2700 | 93.0 | 84.0 | 16.000 | 0.054 | 0.038 | 0.299 | 0.420 | 8.203 |
| Y575 | 100 | 1785 | 115.0 | 38.0 | 295.0 | 900.0 | 2675 | 2700 | 94.5 | 86.5 | 27.500 | 0.034 | 0.021 | 0.236 | 0.219 | 6.820 |
| Y517 | 100 | 1785 | 115.0 | 38.0 | 295.0 | 900.0 | 2675 | 2700 | 94.5 | 86.5 | 27.500 | 0.034 | 0.021 | 0.236 | 0.219 | 6.816 |

* Maximum Constant HP RPM is for direct coupled loads.

Blue Max[®] 2000 Vector Duty Motors

| Blower Motor Performance Data (for TEBC Blower Cooled Motors) | | | | | | | | | | |
|---|--------------|------------|-------|------------------------------|---------------|-------------------|---------|------------|----------------|-------|
| Blower Fits Motor Type | | | | Blower Motor Characteristics | | | | | | |
| Part Number | Model No. | NEMA Frame | Encl. | HP (60/50Hz) | RPM (60/50Hz) | Volts | Hz | F.L. Amps | Sound Pressure | Watts |
| Y513 | 324THFPA8038 | 324TC | TEBC | 1 / 0.75 | 1735 / 1460 | 230/460 – 190/380 | 60 / 50 | 3.0 / 1.5 | 40 | 850 |
| Y513-A775 | | | | | | | | | | 850 |
| Y514 | 326THFPA8038 | 326TC | | | | | | | | 851 |
| Y514-A775 | | | | | | | | | | 852 |
| Y515 | 364THFS8046 | 364TC | | | | | | 3.7 / 1.85 | 68 | 853 |
| Y515-A775 | | | | | | | | | | 854 |
| Y516 | 365THFS8046 | 365TC | | | | | | | | 855 |
| Y516-A775 | | | | | | | | | | 856 |
| Y517 | 405THFS8046 | 405TC | | | | | | 857 | | |
| Y517-A775 | | | | | | | | 858 | | |

Encoder shaft-mounted to motor*

A Dynapar Model HS35/HSD38 shaft-mounted encoder can be supplied pre-installed on the selected motor, either TEFC or TEBC type, as shown in the table below. The encoder requires a 5–26 VDC power source**, provides a count of 1024 pulses per revolution (PPR) differential line driver output, and includes a 10-pin connector. A mating connector is supplied with TEFC (totally enclosed fan cooled) motor encoders; the customer is responsible for supplying the wiring cable and determining the connections to the equipment being used in the application. The encoder adds 1 inch to the TEFC motor's "C" dimension as shown in the dimensional diagram.

The TEBC (totally enclosed blower cooled) motor encoders have the mating connector pre-wired, installed and ending in a pigtail located inside a conduit box mounted on the motor. (See Figure 2 under the motor dimensional information on the next page.) The customer is responsible for determining the connections to the equipment being used in their application.

* If connecting the motor to a DURApulse AC drive, a **GS3-FB Feedback Card** is required for the drive.

** When used with a **GS3-FB** equipped DURApulse AC drive, the **GS3-FB** will supply power to the encoder.

| Motor Shipping Schedule * | | |
|---------------------------|--------------|---------------|
| Same or one day * | Up to 7 days | Up to 10 days |

Color indicates shipping lead time in business days. Check stock status online.

* Certain heavy and oversized items can be shipped only via LTL.

Check our website for current shipping method constraints by part number.

| Motor Accessories | | |
|-------------------|------------|---|
| Part Number | Price | Description * |
| A774 | \$1,149.00 | Encoder kit, replacement, for Blue Max TEFC encoder motors. Dynapar HS35 encoder, 5–26 VDC input, Line Driver output, 1024 pulses per revolution, 1-in bore. |
| A775 | \$1,149.00 | Encoder kit, replacement, for Blue Max TEBC encoder motors. Dynapar HSD38 encoder, 5–26 VDC input, Line Driver output, 1024 pulses per revolution. 1-in bore. |

* Replacement/spare encoder kit for Blue Max Y5xx-A774 and Y5xx-A775 motors; can also be field installed on Blue Max Y5xx motors; select appropriate encoder kit per motor fan type (TEFC or TEBC).

| Motor with Pre-installed Shaft-Mounted Encoder | | | | | |
|--|-------------|-----------|------------------|-------------|------------|
| Part Number | Price | HP | Part Number | Price | HP |
| Y571-A774 | Retired | 40 (TEFC) | Y574-A774 | \$12,636.00 | 75 (TEFC) |
| Y513-A775 | \$9,117.00 | 40 (TEBC) | Y516-A775 | \$14,433.00 | 75 (TEBC) |
| Y572-A774 | \$9,055.00 | 50 (TEFC) | Y575-A774 | Retired | 100 (TEFC) |
| Y514-A775 | \$10,266.00 | 50 (TEBC) | Y517-A775 | Retired | 100 (TEBC) |
| Y573-A774 | \$11,305.00 | 60 (TEFC) | | | |
| Y515-A775 | \$12,281.00 | 60 (TEBC) | | | |

Note: Please review the AutomationDirect Terms & Conditions for warranty and service on this product. Warranty service can be arranged through numerous Marathon Electric service centers. See list of service centers on our Web site at www.AutomationDirect.com.

Encoder Connector Pinout

Note: A mating connector is supplied loose for the customer's wiring on encoder equipped TEFC motors and a mating connector pre-wired to a cable and pigtailed in a conduit box on encoder equipped TEBC motors.

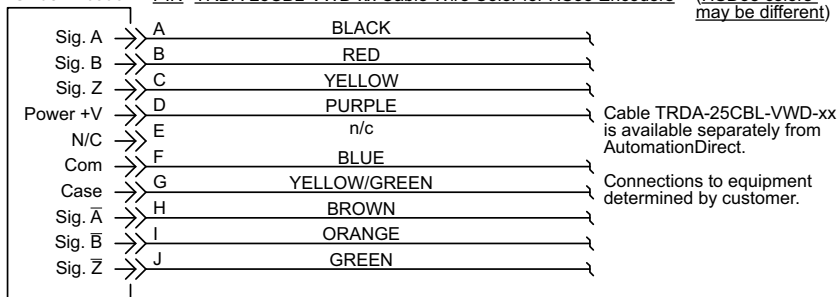
Prewired cables TRDA-25CBL-VWD-xx (10, 20, & 30 ft) and replacement MS connectors

TRDA-25CON-VWD are available from AutomationDirect.

Dynapar HS35/HSD38 Encoder

PIN TRDA-25CBL-VWD-xx Cable Wire Color for HS35 Encoders

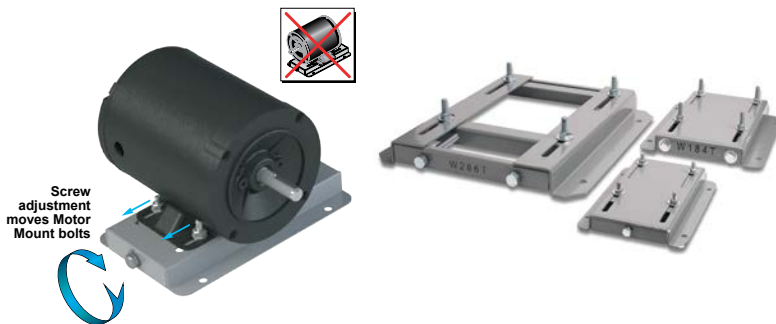
(HSD38 colors may be different)



STABLE™ Motor Slide Bases

Mounting Slide Bases for 56 to 449T NEMA Motors Features

- Allows adjustment of motor mounting position
- Slide direction is perpendicular to motor shaft
- Double adjusting screws for frames 182T-449T
- Manufactured to precise dimensional standards
- Dimensionally interchangeable with existing major makes
- Heavy-duty steel construction
- Painted with oven-baked primer for better adhesion of customer's paint
- All "D" bolts (motor mounting bolts) are fixed to the exact motor foot pattern
- All "D" bolts are welded into position to prevent spinning and dropping from slots
- Nuts and washers are provided for securing the motor to the slide base



| STABLE Motor Slide Bases for 3-Phase Motors | | | | | | | | | | | |
|---|-----------|-----------------|------------------|------------------------|-----------------------|-----------------------------------|---|---------------------------------|---------------|-------------|-------|
| Part Number (MTA-BASE-xxx) | Price | Fits Frame Type | Product Wt. (lb) | Fits Motor | | | | | Drawing Links | | |
| | | | | IronHorse | Leeson® WashGuard® | WEG (Part number ending in...) | Marathon | | | | |
| | | | | | | | microMAX, Max +, Black Max, Blue Max, SyMAX | XRI GP & NEMA Premium, Jet Pump | Globetrotter | | |
| W56 | \$14.00 | 56* | 2.8 | MTPM-P3x-1x18 | | | | | | | |
| | | | | MTPM-P5x-1x18 | | | | | | | |
| | | | | MTPM-P7x-1x18 | | | | | | | |
| | | | | MTPM-0xx-1x18 | | | | | | | |
| | | | | MTPM-1xx-1x18 | | | | | | | |
| | | | | MTR(2)(P)-xxx-xxxxx* | | | | | | | |
| | | | | MTRJ(P)-xxx-xxxxx | | | | | | | |
| | | | | MTSN-P33-3BD18 | | | | | | | |
| | | | | <u>MTSN-P33-3BD18R</u> | | | | | | | |
| | | | | <u>MTSN-P33-3BD36</u> | 112427.00 | | | | | | |
| | | | | <u>MTSP-P33-3BD18</u> | 112428.00 | | | | | | |
| | | | | <u>MTSP-P33-3BD18R</u> | 112429.00 | | | | | | |
| | | | | <u>MTSP-P33-3BD36</u> | 112430.00 | | | | | | |
| | | | | <u>MTSP-P33-3BD36R</u> | 113019.00 | | | | | | |
| | | | | <u>MTSN-P50-3BD18</u> | 113023.00 | | | | | | |
| | | | | <u>MTSN-P50-3BD18R</u> | 113473.00 | | | | | | E2000 |
| | | | | <u>MTSN-P50-3BD36</u> | 113586.00 | | | | | | D390 |
| | | | | <u>MTSP-P50-3BD12</u> | 113590.00 | | | | | | G580 |
| | | | | <u>MTSP-P50-3BD18</u> | 113591.00 | | | | | | D391 |
| | | | | <u>MTSP-P50-3BD18R</u> | 113649.00 | | | | | | G581 |
| | | | | <u>MTSP-P50-3BD36</u> | 116644.00 | | | | | Y500 | K705 |
| | | | | <u>MTSP-P50-3BD36R</u> | 116645.00 | | | | | Y502 | G582 |
| | | | | <u>MTSN-P75-3BD18</u> | 119468.00 | | | | | Y360 | D392 |
| | | | | <u>MTSN-P75-3BD18R</u> | 119469.00 | | | | | Y362 | G582 |
| | | | | <u>MTSN-P75-3BD36</u> | 119471.00 | | | | | Y364 | K707 |
| | | | | <u>MTSN-P75-3BD36R</u> | 119477.00 | | | | | Y280 | D393A |
| | | | | <u>MTSP-P75-3BD12</u> | 119475.00 | | | | (...)56-S | Y281 | K708A |
| | | | | <u>MTSP-P75-3BD18</u> | 119476.00 | | | | (...)56C-S | Y282 | K709A |
| | | | | <u>MTSP-P75-3BD18R</u> | 119478.00 | | | | | Y592(-A772) | G583A |
| | | | | <u>MTSP-P75-3BD36</u> | 119480.00 | | | | | Y534(-A772) | K709A |
| | | | | <u>MTSP-P75-3BD36R</u> | 119482.00 | | | | | Y535(-A772) | D394A |
| | | | | <u>MTSN-001-3BD18</u> | 119483.00 | | | | | SY001 | K721A |
| | | | | <u>MTSN-001-3BD18R</u> | 191202.00 | | | | | SY003 | G584A |
| | | | | <u>MTSN-001-3BD36</u> | 191204.00 | | | | | SY004 | D395A |
| | | | | <u>MTSP-001-3BD18</u> | 191205.00 | | | | | SY005 | G585A |
| | | | | <u>MTSP-001-3BD18R</u> | 191206.00 | | | | | SY035 | K724A |
| | | | | <u>MTSP-001-3BD36</u> | 191207.00 | | | | | | D396A |
| | | | | <u>MTSP-001-3BD36R</u> | 191208.00 | | | | | | K725A |
| | | | | <u>MTSN-1P5-3BD18</u> | 191560.00 | | | | | | J066A |
| | | | | <u>MTSN-1P5-3BD18R</u> | 191561.00 | | | | | | |
| <u>MTSN-1P5-3BD36</u> | 191562.00 | | | | | | | | | | |
| <u>MTSP-1P5-3BD18</u> | 191563.00 | | | | | | | | | | |
| <u>MTSP-1P5-3BD18R</u> | 191564.00 | | | | | | | | | | |
| <u>MTSP-1P5-3BD36</u> | 191569.00 | | | | | | | | | | |
| <u>MTSP-1P5-3BD36R</u> | | | | | | | | | | | |
| <u>MTSN-002-3BD18</u> | | | | | | | | | | | |
| <u>MTSN-002-3BD18R</u> | | | | | | | | | | | |
| <u>MTSN-002-3BD36</u> | | | | | | | | | | | |
| <u>MTSP-002-3BD18</u> | | | | | | | | | | | |
| <u>MTSP-002-3BD18R</u> | | | | | | | | | | | |
| <u>MTSP-002-3BD36</u> | | | | | | | | | | | |
| <u>MTSP-002-3BD36R</u> | | | | | | | | | | | |

* IronHorse MTR2 56HC motors have double-punched bases to fit on slide base MTA-BASE-W56.

STABLE™ Motor Slide Bases

| STABLE Motor Slide Bases for 3-Phase Motors | | | | | | | | | | |
|---|---------|-----------------|------------------|--|--|-----------------------------------|--|--|--|----------------------------|
| Part Number (MTA-BASE-xxx) | Price | Fits Frame Type | Product Wt. (lb) | Fits Motor | | | | | | Drawing Links |
| | | | | IronHorse | Leeson® | WEG (Part number ending in...) | Marathon | | | |
| | | | | | WashGuard® | | microMAX, Max+, Black Max, Blue Max, SyMAX | XRI GP & NEMA Premium, Jet Pump | Globetrotter | |
| <u>W143T</u> | \$26.00 | 143T/TC | 4.6 | MTCP2-001-3BD18(C) MTCP2-1P5-3BD36 MTSN-1P5-3BD36-14 MTSP-1P5-3BD36-14 MTSP-1P5-3BD36R-14 | <u>191487.00</u> <u>191565.00</u> | | <u>Y536(-A772)</u> | <u>E2001A</u> <u>E2003</u> | - | <u>PDF</u> |
| <u>W145T</u> | \$26.00 | 145T/TC | 5.1 | MTCP2-001-3BD12 MTCP2-1P5-3BD18(C) MTCP2-002-3BD18(C) MTCP2-002-3BD36 MTSP-001-3BD12 MTSN-1P5-3BD18-14 MTSN-1P5-3BD18R-14 MTSP-1P5-3BD18-14 MTSP-1P5-3BD18R-14 MTSN-002-3BD18-14 MTSN-002-3BD18R-14 MTSN-002-3BD36-14 MTSP-002-3BD18-14 MTSP-002-3BD18R-14 MTSP-002-3BD36-14 MTSP-002-3BD36R-14 | <u>121866.00</u> <u>121868.00</u> <u>121870.00</u> <u>122182.00</u> <u>122184.00</u> <u>122185.00</u> <u>191490.00</u> <u>191491.00</u> <u>191570.00</u> | (...)145T-S (...)145TC-S | <u>Y366</u> <u>Y368</u> <u>Y284</u> <u>Y285</u> <u>Y537</u> <u>Y538(-A772)</u> <u>Y551(-A772)</u> | <u>E2002</u> <u>E2004A</u> <u>E2007A</u> | - | <u>PDF</u> |
| <u>W182T</u> | \$35.50 | 182T/TC | 9.2 | MTCP2-1P5-3BD12 MTCP2-003-3BD18(C) MTCP2-003-3BD36 MTSP-1P5-3BD12 MTSN-003-3BD18-18 MTSN-003-3BD36-18 MTSP-003-3BD18-18 MTSP-003-3BD36-18 | <u>132196.00</u> <u>132198.00</u> | | <u>Y1999</u> <u>Y286A</u> <u>Y541A(-A772)</u> <u>SY036</u> <u>SY066</u> | <u>E2009</u> <u>E2010</u> | <u>GT0010A</u> <u>GT1010A</u> | <u>PDF</u> |
| <u>W184T</u> | \$35.50 | 184T/TC | 10 | MTCP2-002-3BD12 MTCP2-005-3BD18(C) MTCP2-005-3BD36 MTF-00x-1C18 MTSP-002-3BD12 MTSP-005-3BD18 MTSP-005-3BD36 | <u>132197.00</u> <u>132200.00</u> <u>132201.00</u> <u>132440.00</u> | | <u>Y1372</u> <u>Y287A</u> <u>Y540(-A772)</u> <u>Y543A(-A772)</u> <u>E2012</u> <u>E2013</u> <u>SY007A</u> <u>SY067</u> | - | <u>GT0013A</u> <u>GT1013A</u> <u>GT1210A</u> <u>GT1212A</u> <u>GT1213A</u> | <u>PDF</u> |
| <u>W213T</u> | \$52.00 | 213T/TC | 13 | MTCP2-003-3BD12 MTCP2-7P5-3BD18(C) MTCP2-7P5-3BD36 MTSP-003-3BD12 MTSP-7P5-3BD18 | <u>140819.00</u> <u>140822.00</u> <u>141266.00</u> | | <u>Y994</u> <u>Y542(-A772)</u> <u>Y545(-A772)</u> <u>E2011</u> <u>E2016A</u> <u>E2011A</u> <u>E2016B</u> <u>SY068</u> | - | <u>GT0016A</u> <u>GT1016A</u> <u>GT1216A</u> | <u>PDF</u> |
| <u>W215T</u> | \$52.00 | 215T/TC | 15 | MTCP2-005-3BD12 MTCP2-010-3BD18(C) MTCP2-010-3BD36 MTSP-005-3BD12 MTSP-010-3BD18 | <u>140820.00</u> <u>140821.00</u> | | <u>Y996</u> <u>Y544(-A772)</u> <u>Y547(-A772)</u> <u>E2018</u> <u>E2014A</u> <u>E2018A</u> <u>SY069</u> | - | <u>GT0019A</u> <u>GT1019A</u> <u>GT1218A</u> <u>GT1219A</u> | <u>PDF</u> |
| <u>W254T</u> | \$71.00 | 254T/TC | 18 | MTCP2-7P5-3BD12 MTCP2-015-3BD18(C) MTCP2-015-3BD36 MTSP-015-3BD18 | - | | <u>Y546(-A772)</u> <u>Y549(-A772)</u> | - | <u>GT0059</u> <u>GT1022A</u> <u>GT1222A</u> | <u>PDF</u> |

* IronHorse MTR2 56HC motors have double-punched bases to fit on slide base [MTA-BASE-W56](#).

STABLE™ Motor Slide Bases

| STABLE Motor Slide Bases for 3-Phase Motors | | | | | | | | | | |
|---|----------|--------------------|---------------------|--|------------|--------------------------------------|---|------------------------------------|------------------------------|---------------------|
| Part Number (MTA-BASE- xxx) | Price | Fits Frame Type | Product Wt. (lb) | Fits Motor | | | | | | Drawing Links |
| | | | | IronHorse | Leeson® | WEG (Part number ending in...) | Marathon | | | |
| | | | | | WashGuard® | | microMAX, Max+, Black Max, Blue Max, SyMAX | XRI GP & NEMA Premium, Jet Pump | Globetrotter | |
| W256T | \$71.00 | 256T/ TC | 19 | MTCP2-010-3BD12 MTCP2-020-3BD18(C) MTCP2-020-3BD36 MTSP-020-3BD18 | - | | Y548(-A772) Y552 | - | GT0062 GT1025A GT1225A | PDF |
| W284T | \$79.00 | 284T/ TC | 20 | MTCP2-015-3BD12 MTCP2-025-3BD18(C) | - | | - | - | GT0065 GT1028A | PDF |
| W286T | \$79.00 | 286T/ TC | 21 | MTCP2-020-3BD12 MTCP2-030-3BD18(C) | - | | - | - | GT0067 GT1031A | PDF |
| W324T | \$116.00 | 324T/ TC | 30 | MTCP2-040-3BD18(C) | - | | Y571(-A774) Y513(-A775) | - | GT0073 GT1034A | PDF |
| W326T | \$116.00 | 326T/ TC | 31 | MTCP2-050-3BD18(C) | - | | Y572(-A774) Y514(-A775) | - | GT0077 GT1037A | PDF |
| W364T | \$158.00 | 364T/ TC | 43 | MTCP2-060-3BD18(C) | - | | Y573(-A774) Y515(-A775) | - | GT1040A | PDF |
| W365T | \$158.00 | 365T/ TC | 43 | MTCP2-075-3BD18(C) | - | | Y574(-A774) Y516(-A775) | - | GT1043A | PDF |
| W404T | \$193.00 | 404T/ TC | 58 | - | - | | - | - | - | PDF |
| W405T | \$193.00 | 405T/ TC | 60 | MTCP2-100-3BD18(C) | - | | Y575(-A774) Y517(-A775) | - | GT1046A | PDF |
| W444T | \$219.00 | 444T | 63 | MTCP2-125-3BD18 | - | | - | - | GT1049A | PDF |
| W445T | \$219.00 | 445T | 65 | MTCP2-150-3BD18 | - | | - | - | GT1052A | PDF |
| W447T | \$288.00 | 447T | 89 | MTCP2-200-3BD18 | - | | - | - | GT1055A | PDF |
| W449T | \$288.00 | 449T | 94 | MTCP2-250-3D18 MTCP2-300-3D18 | - | | - | - | - | PDF |

* IronHorse MTR2 56HC motors have double-punched bases to fit on slide base [MTA-BASE-W56](#).

STABLE™ Motor Slide Bases

Mounting Slide Bases for 56 to 215T NEMA Motors Features

| STABLE Motor Slide Bases for 1-phase Motors | | | | | | | | | |
|---|---------|-----------------|------------------|--|---------------------------------------|---|------------------------------|------------------------------|-----------------------------|
| Part Number | Price | Fits Frame Type | Product Wt. (lb) | Fits Motor | | | | | |
| | | | | IronHorse | Leeson® | | Marathon | | |
| | | | | | Washguard® | Marathon DP GP (NEMA Service Factor) | Marathon DP Air Compressor | Fan & Blower | Marathon TE GP 4-in-1 |
| <u>MTA-BASE-W56</u> | \$14.00 | 56* | 2.8 | MTR2-xxx-1AB18 MTR2-xxx-1AB36 MTPM-xxx-1L18 MTPM-xxx-1M18 | 112431.00 | <u>C158A</u> | D010 C169 C704 D017 | <u>C216</u> | <u>G570</u> |
| | | | | | 112527.00 | <u>G915A</u> | | <u>D311</u> | |
| | | | | | 112528.00 | <u>C175A</u> | | <u>C1153</u> | <u>G571</u> |
| | | | | | 112529.00 | <u>C167A</u> | | <u>C1155</u> | <u>D312</u> |
| | | | | | 113583.00 | <u>C179A</u> | | <u>B319</u> | <u>G572</u> |
| | | | | | 114311.00 | <u>G937A</u> | | <u>D118</u> | <u>D313</u> |
| | | | | | 114313.00 | <u>C185A</u> | | <u>C1158</u> | <u>G573</u> |
| | | | | | 114317.00 | <u>C187A</u> | | <u>C235</u> | <u>D314</u> |
| | | | | | 191475.00 | <u>C193A</u> | | <u>D115</u> | <u>G574</u> |
| | | | | | 191477.00 | <u>E261A</u> | | <u>C1160</u> | <u>D315</u> |
| | | | | | 191479.00 | <u>E268A</u> | | <u>C1161</u> | <u>G575</u> |
| | | | | | | <u>EG277A</u> | | <u>B352</u> | <u>D316</u> |
| | | | | | <u>MTA-BASE-W143T</u> | \$26.00 | | 143T / TC | 4.6 |
| <u>MTA-BASE-W145T</u> | \$26.00 | 145TC / TC | 5.1 | - | - | <u>C191</u> <u>I127</u> <u>C194</u> | - | - | - |
| <u>MTA-BASE-W182T</u> | \$35.50 | 182T / TC | 9.2 | - | - | - | - | - | - |
| <u>MTA-BASE-W184T</u> | \$35.50 | 184 / TC | 10 | MTF-00x-1C18 | - | - | <u>Z502</u> | - | - |
| <u>MTA-BASE-W213T</u> | \$52.00 | 213T / TC | 13 | - | - | - | - | - | - |
| <u>MTA-BASE-W215T</u> | \$52.00 | 215T T TC | 15 | - | - | - | - | - | - |

* IronHorse MTR2 56HC motors have double-punched bases to fit on slide base [MTA-BASE-W56](#).