

# Black Max<sup>®</sup> Vector Duty Motors



## Motor Shipping Schedule \*

Same or one day \*    Up to 7 days    Up to 10 days

Color indicates shipping lead time in business days. Check stock status online.

\* Certain heavy and oversized items can be shipped only via LTL. Check our website for current shipping method constraints by part number.

## Features

- Class F MAX GUARD<sup>®</sup> insulation system
- Constant torque operation from 0 to base speed on vector drive
- Constant horsepower operation to twice base RPM
- Continuous duty at 40° C ambient
- Optimized for operation with IGBT inverter (NEMA Design A)
- Class F N/C thermostats (one per phase)
- Utilizes double shielded ball bearings
- Exxon Polyrex<sup>®</sup> EM bearing grease
- C-Face with rigid base, except C-Face with removable rigid base as noted
- F1 standard conduit box location, field reversible to F2 (except as noted)
- Available with optional encoder installed on opposite drive end
- Electrically reversible
- UL Recognized, CSA Certified, and CE Mark
- Three year warranty (through Marathon Electric)

## Applications

- Designed for inverter or vector applications where up to a 1000:1 constant torque speed range is required.
- Typical uses include: material handling, machine tools, conveyors, crane and hoist, metal processing, test stands, pumps, compressors, textile processing, and other industrial machinery installed in dusty or dirty environments.

## 230/460V Motor Specifications

Part Number *	Price	HP	Base RPM	Volts	Enclosure	NEMA Frame	Model No.	F.L. Amps	Weight (lb) *	Footnotes	Drawing Links
<a href="#">Y592</a>	\$476.00	1/4	1800	230/460	TENV	56C	56H17T2001	1.2 / 0.6	19	T, S, 13	<a href="#">PDF</a>
<a href="#">Y534</a>	\$602.00	1/2	1800	230/460	TENV	56C	56H17T5301	1.6 / 0.8	28	T, S, 6, 13	<a href="#">PDF</a>
<a href="#">Y535</a>	\$718.00	1	1800	230/460	TENV	56C	56H17T5302	3.0 / 1.5	41	T, S, 6, 13	<a href="#">PDF</a>
<a href="#">Y536</a>	\$738.00	1	1800	230/460	TENV	143TC	143THTR5326	3.0 / 1.5	43	T, S, 6, 13	<a href="#">PDF</a>
<a href="#">Y537</a>	\$854.00	1	1200	230/460	TENV	145TC	145THTR5376	3.8 / 1.9	49	T, S, 6, 13	<a href="#">PDF</a>
<a href="#">Y538</a>	\$896.00	1-1/2	1800	230/460	TENV	145TC	145THTR5326	4.8 / 2.4	50	T, S, 6, 13	<a href="#">PDF</a>
<a href="#">Y551</a>	\$1,237.00	2	1800	230/460	TENV	145TC	145HTN6046	6.0 / 3.0	72	T, CI	<a href="#">PDF</a>
<a href="#">Y540</a>	\$1,675.00	2	1200	230/460	TENV	184TC	184HTL7776	6.6 / 3.3	88	T, AL	<a href="#">PDF</a>
<a href="#">Y541A</a>	\$1,478.00	3	1800	230/460	TENV	182TC	182HTY7726	8.2 / 4.1	110	T, AL	<a href="#">PDF</a>
<a href="#">Y542</a>	\$2,062.00	3	1200	230/460	TENV	213TC	213HTL7776	9.4 / 4.7	118	T, AL	<a href="#">PDF</a>
<a href="#">Y543A</a>	\$1,768.00	5	1800	230/460	TENV	184TC	184HTY7726	13.4 / 6.7	125	T, AL	<a href="#">PDF</a>
<a href="#">Y544</a>	\$2,510.00	5	1200	230/460	TENV	215TC	215HTL7776	15.4 / 7.7	138	T, AL	<a href="#">PDF</a>
<a href="#">Y545</a>	\$2,276.00	7-1/2	1800	230/460	TENV	213TC	213HTL7726	21.0 / 10.5	146	T, AL	<a href="#">PDF</a>
<a href="#">Y546</a>	\$3,375.00	7-1/2	1200	230/460	TENV	254TC	254HTL5776	22.0 / 11.0	209	T, AL	<a href="#">PDF</a>
<a href="#">Y547</a>	\$2,722.00	10	1800	230/460	TENV	215TC	215HTL7726	27.0 / 13.5	159	T, AL	<a href="#">PDF</a>
<a href="#">Y548</a>	\$3,821.00	10	1200	230/460	TENV	256TC	256HTL5776	28 / 14	203	T, AL	<a href="#">PDF</a>
<a href="#">Y549</a>	\$3,236.00	15	1800	230/460	TENV	254TC	254HTL5726	40 / 20	250	T, AL, I	<a href="#">PDF</a>
<a href="#">Y552</a>	\$4,727.00	20	1800	230/460	TENV	256TC	256HTNA7026	52 / 26	300	T, I, CI	<a href="#">PDF</a>
<a href="#">Y553</a>	Retired	25	1800	230/460	TENV	284TC	284HTNA7026	62 / 31	495	T, I, CI	<a href="#">PDF</a>
<a href="#">Y393</a>	Retired	30	1800	230/460	TENV	286TC	286HTNA7026	74 / 37	575	T, I, CI	<a href="#">PDF</a>

\* Refer to the Motor Shipping Schedule table for shipping information.

### Footnotes:

6 Bolt-on, removable base for footless mounting option  
 13 F1 Mounting Only, cannot modify to F2  
 AL Aluminum Frame Construction

### Footnotes (continued):

CI Cast-iron Frame Construction  
 I Intermittent duty from 90-120 Hz operation  
 S Steel Frame Construction

### Footnotes (continued):

T Thermostat overload

Note: Please review the AutomationDirect Terms & Conditions for warranty and service on his product.

Warranty service can be arranged through numerous Marathon Electric service centers. See list of service centers on our Web site at [www.AutomationDirect.com](http://www.AutomationDirect.com).



# Black Max<sup>®</sup> Vector Duty Motors

Motor Shipping Schedule *		
Same or one day *	Up to 7 days	Up to 10 days

Color indicates shipping lead time in business days. Check stock status online.

\* Certain heavy and oversized items can be shipped only via LTL. Check our website for current shipping method constraints by part number.

## Motor with Shaft-Mounted Encoder\*

A Dynapar Model HS35 shaft-mounted encoder can be supplied pre-installed on the motors as shown in the price table below. The encoder requires a 5–26 VDC power source, provides a count of 1024 pulses per revolution (PPR) differential line driver output, and includes a 10-pin mating connector.

\* If connecting the motor to a GS3 DURApulse AC drive, a [GS3-FB Feedback Card](#) is required for the drive.

Motor Accessories		
Part Number	Price	Description *
<a href="#">A772</a>	\$1,176.00	Encoder kit, replacement, for Black Max encoder motors. Dynapar HS35 encoder, 5–26 VDC input, Line Driver output, 1024 pulses per revolution, 5/8-in bore.

\* Replacement/spare encoder kit for Black Max Yxxx-A772 motors; can also be field installed on Black Max Yxxx motors without encoders.

Motor with Pre-installed Shaft-Mounted Encoder					
230/460V Motors					
Part Number	Price	HP	Part Number	Price	HP
<a href="#">Y592-A772</a>	\$1,605.00	1/4	<a href="#">Y544-A772</a>	\$3,763.00	5
<a href="#">Y534-A772</a>	\$1,833.00	1/2	<a href="#">Y545-A772</a>	\$3,533.00	7 1/2
<a href="#">Y535-A772</a>	\$1,936.00	1	<a href="#">Y546-A772</a>	\$4,614.00	7 1/2
<a href="#">Y536-A772</a>	\$1,953.00	1	<a href="#">Y547-A772</a>	\$3,973.00	10
<a href="#">Y538-A772</a>	\$2,189.00	1 1/2	<a href="#">Y548-A772</a>	\$5,052.00	10
<a href="#">Y551-A772</a>	\$2,395.00	2	<a href="#">Y549-A772</a>	\$4,480.00	15
<a href="#">Y540-A772</a>	\$2,944.00	2			
<a href="#">Y541A-A772</a>	\$2,726.00	3			
<a href="#">Y542-A772</a>	\$3,325.00	3			
<a href="#">Y543A-A772</a>	\$3,002.00	5			

Note: Please review the AutomationDirect Terms & Conditions for warranty and service on this product. Warranty service can be arranged through numerous Marathon Electric service centers. See list of service centers on our Web site at [www.AutomationDirect.com](http://www.AutomationDirect.com).

# Black Max<sup>®</sup> Vector Duty Motors

## Encoder Connector Pinout

Note: A mating connector is supplied with the encoder. Prewired cables TRDA-25CBL-VWD-xx (10, 20, & 30 ft) and replacement MS connectors TRDA-25CON-VWD are available from AutomationDirect.

Dynapar HS35 Encoder PIN TRDA-25CBL-VWD-xx Cable Wire Color



Cable TRDA-25CBL-VWD-xx is available separately from AutomationDirect.

Connections to equipment determined by customer.

### Motor Performance Data (460 Volt) \*

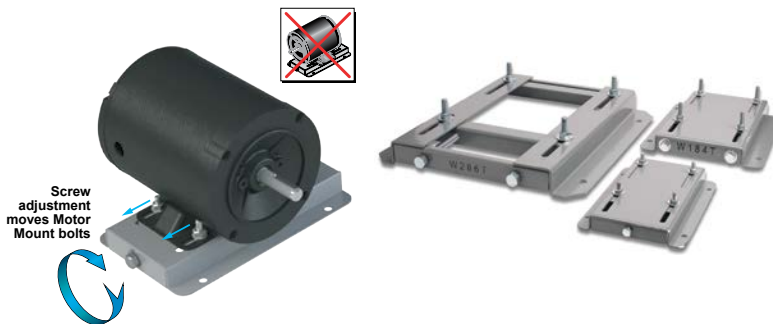
Part Number	HP	F.L. rpm	F.L. Amps @460V	N.L. Amps @460V	F.L. Torque (lb-ft)	B.D. Torque (lb-ft)	Max. C hp rpm *	Max. Safe rpm	F.L. Effic. (%)	F.L. Power Factor	Rotor Inertia (lb-ft <sup>2</sup> )	Ohms/Ph - Equiv. Wye Circuit (460 VAC) (at rated operating temp. in 40° C ambient)				
												R1	R2	X1	X2	XM
<a href="#">Y592</a>	1/4	1755	0.6	0.45	0.75	4.5	3540	5400	70.0	58.0	0.045	26.300	23.000	30.240	14.700	572.000
<a href="#">Y534</a>	1/2	1735	0.8	0.52	1.5	5.8	3510	5400	80.0	72.0	0.056	22.307	17.028	24.123	18.163	532.976
<a href="#">Y535</a>	1	1750	1.5	1.0	3.0	15.0	3505	5400	84.0	75.0	0.110	8.378	5.623	10.707	9.912	278.036
<a href="#">Y536</a>	1	1750	1.5	1.0	3.0	15.0	3505	5400	84.0	75.0	0.110	8.378	5.623	10.707	9.912	278.036
<a href="#">Y537</a>	1	1145	1.9	1.3	4.5	16.0	2260	5400	80.0	62.5	0.140	10.302	8.372	13.793	15.325	193.835
<a href="#">Y538</a>	1-1/2	1755	2.4	1.6	4.5	29.0	3518	5400	85.5	69.0	0.140	4.257	3.538	5.998	5.884	161.009
<a href="#">Y551</a>	2	1750	3.0	1.7	6.0	28.5	3525	5400	85.5	78.0	0.130	3.834	2.897	5.950	5.637	154.800
<a href="#">Y540</a>	2	1160	3.3	2.1	9.0	34.0	2315	5400	82.5	67.5	0.380	3.948	3.436	7.725	12.113	116.900
<a href="#">Y541A</a>	3	1755	4.1	2.3	9.0	49.3	3515	5400	87.5	78.5	0.420	1.578	1.802	2.838	2.091	94.13
<a href="#">Y542</a>	3	1158	4.7	3.0	13.6	49.0	2300	4200	82.5	72.5	0.600	2.469	2.318	6.508	4.125	83.910
<a href="#">Y543A</a>	5	1760	6.7	3.2	14.9	61.5	3520	5400	89.5	79	0.520	1.428	1.05	2.09	3.379	63.334
<a href="#">Y544</a>	5	1165	7.7	4.8	22.5	87.0	2320	4200	84.0	71.0	0.900	1.130	1.250	3.709	2.573	51.972
<a href="#">Y545</a>	7-1/2	1765	10.5	5.5	22.3	95.5	3525	4200	90.2	76.0	0.850	0.699	0.567	1.765	2.260	38.178
<a href="#">Y546</a>	7-1/2	1170	11.0	6.0	34.0	118.0	2325	4200	87.5	73.0	1.200	0.510	0.680	2.846	3.247	42.714
<a href="#">Y547</a>	10	1774	13.5	7.4	29.5	125.0	3540	4200	90.2	76.0	1.300	0.369	0.334	1.423	2.281	34.932
<a href="#">Y548</a>	10	1160	14	7.0	45.5	135.0	2320	4200	89.5	75.5	1.500	0.534	0.693	2.258	2.323	30.530
<a href="#">Y549</a>	15	1765	20	11.0	45.0	170.0	3550	4200	92.4	76.0	1.600	0.134	0.316	1.047	1.569	22.151
<a href="#">Y552</a>	20	1768	26	13.5	59.5	290.0	3560	5400	93.6	80.0	3.100	0.234	0.213	0.746	0.689	18.204

\* Maximum Constant hp rpm is for direct coupled loads.

# STABLE™ Motor Slide Bases

## Mounting Slide Bases for 56 to 449T NEMA Motors Features

- Allows adjustment of motor mounting position
- Slide direction is perpendicular to motor shaft
- Double adjusting screws for frames 182T-449T
- Manufactured to precise dimensional standards
- Dimensionally interchangeable with existing major makes
- Heavy-duty steel construction
- Painted with oven-baked primer for better adhesion of customer's paint
- All "D" bolts (motor mounting bolts) are fixed to the exact motor foot pattern
- All "D" bolts are welded into position to prevent spinning and dropping from slots
- Nuts and washers are provided for securing the motor to the slide base



STABLE Motor Slide Bases for 3-Phase Motors												
Part Number (MTA-BASE-xxx)	Price	Fits Frame Type	Product Wt. (lb)	Fits Motor					Drawing Links			
				IronHorse	Leeson® WashGuard®	WEG (Part number ending in...)	Marathon					
							microMAX, Max +, Black Max, Blue Max, SyMAX	XRI GP & NEMA Premium, Jet Pump	Globetrotter			
<b>W56</b>	\$14.00	56*	2.8	MTPM-P3x-1x18								
				MTPM-P5x-1x18								
				MTPM-P7x-1x18								
				MTPM-0xx-1x18								
				MTPM-1xx-1x18								
				MTR(2)(P)-xxx-xxxxx*								
				MTRJ(P)-xxx-xxxxx								
				MTSN-P33-3BD18								
				<a href="#">MTSN-P33-3BD18R</a>								
				<a href="#">MTSN-P33-3BD36</a>	112427.00							
				<a href="#">MTSP-P33-3BD18</a>	112428.00							
				<a href="#">MTSP-P33-3BD18R</a>	112429.00							
				<a href="#">MTSP-P33-3BD36</a>	112430.00							
				<a href="#">MTSP-P33-3BD36R</a>	113019.00							
				<a href="#">MTSN-P50-3BD18</a>	113023.00							
				<a href="#">MTSN-P50-3BD18R</a>	113473.00							E2000
				<a href="#">MTSN-P50-3BD36</a>	113586.00							D390
				<a href="#">MTSP-P50-3BD12</a>	113590.00							G580
				<a href="#">MTSP-P50-3BD18</a>	113591.00							D391
				<a href="#">MTSP-P50-3BD18R</a>	113649.00							G581
				<a href="#">MTSP-P50-3BD36</a>	116644.00					Y500		K705
				<a href="#">MTSP-P50-3BD36R</a>	116645.00					Y502		G582
				<a href="#">MTSN-P75-3BD18</a>	119468.00					Y360		D392
				<a href="#">MTSN-P75-3BD18R</a>	119469.00					Y362		G582
				<a href="#">MTSN-P75-3BD36</a>	119471.00					Y364		K707
				<a href="#">MTSN-P75-3BD36R</a>	119475.00					Y280		D393A
				<a href="#">MTSP-P75-3BD12</a>	119476.00				(...)56-S	Y281		K708A
				<a href="#">MTSP-P75-3BD18</a>	119476.00				(...)56C-S	Y282		K708A
				<a href="#">MTSP-P75-3BD18R</a>	119478.00					Y592(-A772)		G583A
				<a href="#">MTSP-P75-3BD36</a>	119480.00					Y534(-A772)		K709A
				<a href="#">MTSP-P75-3BD36R</a>	119482.00					Y535(-A772)		D394A
				<a href="#">MTSN-001-3BD18</a>	119483.00					SY001		K721A
				<a href="#">MTSN-001-3BD18R</a>	191202.00					SY003		G584A
				<a href="#">MTSN-001-3BD36</a>	191204.00					SY004		D395A
				<a href="#">MTSP-001-3BD18</a>	191205.00					SY005		G585A
				<a href="#">MTSP-001-3BD18R</a>	191206.00					SY035		K724A
				<a href="#">MTSP-001-3BD36</a>	191207.00							D396A
				<a href="#">MTSP-001-3BD36R</a>	191208.00							K725A
				<a href="#">MTSN-1P5-3BD18</a>	191560.00							J066A
				<a href="#">MTSN-1P5-3BD18R</a>	191561.00							
<a href="#">MTSN-1P5-3BD36</a>	191562.00											
<a href="#">MTSP-1P5-3BD18</a>	191563.00											
<a href="#">MTSP-1P5-3BD18R</a>	191564.00											
<a href="#">MTSP-1P5-3BD36</a>	191569.00											
<a href="#">MTSP-1P5-3BD36R</a>												
<a href="#">MTSN-002-3BD18</a>												
<a href="#">MTSN-002-3BD18R</a>												
<a href="#">MTSN-002-3BD36</a>												
<a href="#">MTSP-002-3BD18</a>												
<a href="#">MTSP-002-3BD18R</a>												
<a href="#">MTSP-002-3BD36</a>												
<a href="#">MTSP-002-3BD36R</a>												

\* IronHorse MTR2 56HC motors have double-punched bases to fit on slide base MTA-BASE-W56.

# STABLE™ Motor Slide Bases

STABLE Motor Slide Bases for 3-Phase Motors										
Part Number (MTA-BASE-xxx)	Price	Fits Frame Type	Product Wt. (lb)	Fits Motor						Drawing Links
				IronHorse	Leeson®	WEG (Part number ending in...)	Marathon			
					WashGuard®		microMAX, Max+, Black Max, Blue Max, SyMAX	XRI GP & NEMA Premium, Jet Pump	Globetrotter	
<a href="#">W143T</a>	\$26.00	143T/TC	4.6	MTCP2-001-3BD18(C) MTCP2-1P5-3BD36 MTSN-1P5-3BD36-14 MTSP-1P5-3BD36-14 MTSP-1P5-3BD36R-14	<a href="#">191487.00</a> <a href="#">191565.00</a>		<a href="#">Y536(-A772)</a>	<a href="#">E2001A</a> <a href="#">E2003</a>	-	<a href="#">PDF</a>
<a href="#">W145T</a>	\$26.00	145T/TC	5.1	MTCP2-001-3BD12 MTCP2-1P5-3BD18(C) MTCP2-002-3BD18(C) MTCP2-002-3BD36 MTSP-001-3BD12 MTSN-1P5-3BD18-14 MTSN-1P5-3BD18R-14 MTSP-1P5-3BD18-14 MTSP-1P5-3BD18R-14 MTSN-002-3BD18-14 MTSN-002-3BD18R-14 MTSN-002-3BD36-14 MTSP-002-3BD18-14 MTSP-002-3BD18R-14 MTSP-002-3BD36-14 MTSP-002-3BD36R-14	<a href="#">121866.00</a> <a href="#">121868.00</a> <a href="#">121870.00</a> <a href="#">122182.00</a> <a href="#">122184.00</a> <a href="#">122185.00</a> <a href="#">191490.00</a> <a href="#">191491.00</a> <a href="#">191570.00</a>	(...)145T-S (...)145TC-S	<a href="#">Y366</a> <a href="#">Y368</a> <a href="#">Y284</a> <a href="#">Y285</a> <a href="#">Y537</a> <a href="#">Y538(-A772)</a> <a href="#">Y551(-A772)</a>	<a href="#">E2002</a> <a href="#">E2004A</a> <a href="#">E2007A</a>	-	<a href="#">PDF</a>
<a href="#">W182T</a>	\$35.50	182T/TC	9.2	MTCP2-1P5-3BD12 MTCP2-003-3BD18(C) MTCP2-003-3BD36 MTSP-1P5-3BD12 MTSN-003-3BD18-18 MTSN-003-3BD36-18 MTSP-003-3BD18-18 MTSP-003-3BD36-18	<a href="#">132196.00</a> <a href="#">132198.00</a>		<a href="#">Y1999</a> <a href="#">Y286A</a> <a href="#">Y541A(-A772)</a> <a href="#">SY036</a> <a href="#">SY066</a>	<a href="#">E2009</a> <a href="#">E2010</a>	<a href="#">GT0010A</a> <a href="#">GT1010A</a>	<a href="#">PDF</a>
<a href="#">W184T</a>	\$35.50	184T/TC	10	MTCP2-002-3BD12 MTCP2-005-3BD18(C) MTCP2-005-3BD36 MTF-00x-1C18 MTSP-002-3BD12 MTSP-005-3BD18 MTSP-005-3BD36	<a href="#">132197.00</a> <a href="#">132200.00</a> <a href="#">132201.00</a> <a href="#">132440.00</a>		<a href="#">Y1372</a> <a href="#">Y287A</a> <a href="#">Y540(-A772)</a> <a href="#">Y543A(-A772)</a> <a href="#">E2012</a> <a href="#">E2013</a> <a href="#">SY007A</a> <a href="#">SY067</a>	-	<a href="#">GT0013A</a> <a href="#">GT1013A</a> <a href="#">GT1210A</a> <a href="#">GT1212A</a> <a href="#">GT1213A</a>	<a href="#">PDF</a>
<a href="#">W213T</a>	\$52.00	213T/TC	13	MTCP2-003-3BD12 MTCP2-7P5-3BD18(C) MTCP2-7P5-3BD36 MTSP-003-3BD12 MTSP-7P5-3BD18	<a href="#">140819.00</a> <a href="#">140822.00</a> <a href="#">141266.00</a>		<a href="#">Y994</a> <a href="#">Y542(-A772)</a> <a href="#">Y545(-A772)</a> <a href="#">E2011</a> <a href="#">E2016A</a> <a href="#">E2011A</a> <a href="#">E2016B</a> <a href="#">SY068</a>	-	<a href="#">GT0016A</a> <a href="#">GT1016A</a> <a href="#">GT1216A</a>	<a href="#">PDF</a>
<a href="#">W215T</a>	\$52.00	215T/TC	15	MTCP2-005-3BD12 MTCP2-010-3BD18(C) MTCP2-010-3BD36 MTSP-005-3BD12 MTSP-010-3BD18	<a href="#">140820.00</a> <a href="#">140821.00</a>		<a href="#">Y996</a> <a href="#">Y544(-A772)</a> <a href="#">Y547(-A772)</a> <a href="#">E2018</a> <a href="#">E2014A</a> <a href="#">E2018A</a> <a href="#">SY069</a>	-	<a href="#">GT0019A</a> <a href="#">GT1019A</a> <a href="#">GT1218A</a> <a href="#">GT1219A</a>	<a href="#">PDF</a>
<a href="#">W254T</a>	\$71.00	254T/TC	18	MTCP2-7P5-3BD12 MTCP2-015-3BD18(C) MTCP2-015-3BD36 MTSP-015-3BD18	-		<a href="#">Y546(-A772)</a> <a href="#">Y549(-A772)</a>	-	<a href="#">GT0059</a> <a href="#">GT1022A</a> <a href="#">GT1222A</a>	<a href="#">PDF</a>

\* IronHorse MTR2 56HC motors have double-punched bases to fit on slide base [MTA-BASE-W56](#).

# STABLE™ Motor Slide Bases

STABLE Motor Slide Bases for 3-Phase Motors										
Part Number (MTA-BASE- xxx)	Price	Fits Frame Type	Product Wt. (lb)	Fits Motor						Drawing Links
				IronHorse	Leeson®	WEG (Part number ending in...)	Marathon			
					WashGuard®		microMAX, Max+, Black Max, Blue Max, SyMAX	XRI GP & NEMA Premium, Jet Pump	Globetrotter	
<a href="#">W256T</a>	\$71.00	256T/ TC	19	MTCP2-010-3BD12 MTCP2-020-3BD18(C) MTCP2-020-3BD36 MTSP-020-3BD18	-		Y548(-A772) Y552	-	GT0062 GT1025A GT1225A	<a href="#">PDF</a>
<a href="#">W284T</a>	\$79.00	284T/ TC	20	MTCP2-015-3BD12 MTCP2-025-3BD18(C)	-		-	-	GT0065 GT1028A	<a href="#">PDF</a>
<a href="#">W286T</a>	\$79.00	286T/ TC	21	MTCP2-020-3BD12 MTCP2-030-3BD18(C)	-		-	-	GT0067 GT1031A	<a href="#">PDF</a>
<a href="#">W324T</a>	\$116.00	324T/ TC	30	MTCP2-040-3BD18(C)	-		Y571(-A774) Y513(-A775)	-	GT0073 GT1034A	<a href="#">PDF</a>
<a href="#">W326T</a>	\$116.00	326T/ TC	31	MTCP2-050-3BD18(C)	-		Y572(-A774) Y514(-A775)	-	GT0077 GT1037A	<a href="#">PDF</a>
<a href="#">W364T</a>	\$158.00	364T/ TC	43	MTCP2-060-3BD18(C)	-		Y573(-A774) Y515(-A775)	-	GT1040A	<a href="#">PDF</a>
<a href="#">W365T</a>	\$158.00	365T/ TC	43	MTCP2-075-3BD18(C)	-		Y574(-A774) Y516(-A775)	-	GT1043A	<a href="#">PDF</a>
<a href="#">W404T</a>	\$193.00	404T/ TC	58	-	-		-	-	-	<a href="#">PDF</a>
<a href="#">W405T</a>	\$193.00	405T/ TC	60	MTCP2-100-3BD18(C)	-		Y575(-A774) Y517(-A775)	-	GT1046A	<a href="#">PDF</a>
<a href="#">W444T</a>	\$219.00	444T	63	MTCP2-125-3BD18	-		-	-	GT1049A	<a href="#">PDF</a>
<a href="#">W445T</a>	\$219.00	445T	65	MTCP2-150-3BD18	-		-	-	GT1052A	<a href="#">PDF</a>
<a href="#">W447T</a>	\$288.00	447T	89	MTCP2-200-3BD18	-		-	-	GT1055A	<a href="#">PDF</a>
<a href="#">W449T</a>	\$288.00	449T	94	MTCP2-250-3D18 MTCP2-300-3D18	-		-	-	-	<a href="#">PDF</a>

\* IronHorse MTR2 56HC motors have double-punched bases to fit on slide base [MTA-BASE-W56](#).

# STABLE™ Motor Slide Bases

## Mounting Slide Bases for 56 to 215T NEMA Motors Features

STABLE Motor Slide Bases for 1-phase Motors									
Part Number	Price	Fits Frame Type	Product Wt. (lb)	Fits Motor					
				IronHorse	Leeson®		Marathon		
					Washguard®	Marathon DP GP (NEMA Service Factor)	Marathon DP Air Compressor	Fan & Blower	Marathon TE GP 4-in-1
<a href="#"><u>MTA-BASE-W56</u></a>	\$14.00	56*	2.8	MTR2-xxx-1AB18 MTR2-xxx-1AB36 MTPM-xxx-1L18 MTPM-xxx-1M18	112431.00	<a href="#"><u>C158A</u></a>	D010 C169 C704 D017	<a href="#"><u>C216</u></a>	<a href="#"><u>G570</u></a>
					112527.00	<a href="#"><u>G915A</u></a>		<a href="#"><u>D311</u></a>	
					112528.00	<a href="#"><u>C175A</u></a>		<a href="#"><u>C1153</u></a>	<a href="#"><u>G571</u></a>
					112529.00	<a href="#"><u>C167A</u></a>		<a href="#"><u>C1155</u></a>	<a href="#"><u>D312</u></a>
					113583.00	<a href="#"><u>C179A</u></a>		<a href="#"><u>B319</u></a>	<a href="#"><u>G572</u></a>
					114311.00	<a href="#"><u>G937A</u></a>		<a href="#"><u>D118</u></a>	<a href="#"><u>D313</u></a>
					114313.00	<a href="#"><u>C185A</u></a>		<a href="#"><u>C1158</u></a>	<a href="#"><u>G573</u></a>
					114317.00	<a href="#"><u>C187A</u></a>		<a href="#"><u>C235</u></a>	<a href="#"><u>D314</u></a>
					191475.00	<a href="#"><u>C193A</u></a>		<a href="#"><u>D115</u></a>	<a href="#"><u>G574</u></a>
					191477.00	<a href="#"><u>E261A</u></a>		<a href="#"><u>C1160</u></a>	<a href="#"><u>D315</u></a>
					191479.00	<a href="#"><u>E268A</u></a>		<a href="#"><u>C1161</u></a>	<a href="#"><u>G575</u></a>
						<a href="#"><u>EG277A</u></a>		<a href="#"><u>B352</u></a>	<a href="#"><u>D316</u></a>
					<a href="#"><u>MTA-BASE-W143T</u></a>	\$26.00		143T / TC	4.6
<a href="#"><u>MTA-BASE-W145T</u></a>	\$26.00	145TC / TC	5.1	-	-	<a href="#"><u>C191</u></a> <a href="#"><u>I127</u></a> <a href="#"><u>C194</u></a>	-	-	-
<a href="#"><u>MTA-BASE-W182T</u></a>	\$35.50	182T / TC	9.2	-	-	-	-	-	-
<a href="#"><u>MTA-BASE-W184T</u></a>	\$35.50	184 / TC	10	MTF-00x-1C18	-	-	<a href="#"><u>Z502</u></a>	-	-
<a href="#"><u>MTA-BASE-W213T</u></a>	\$52.00	213T / TC	13	-	-	-	-	-	-
<a href="#"><u>MTA-BASE-W215T</u></a>	\$52.00	215T T TC	15	-	-	-	-	-	-

\* IronHorse MTR2 56HC motors have double-punched bases to fit on slide base [MTA-BASE-W56](#).