

STXR Series Surge Protective Devices



The most popular range in the STX series offering, the Surge-Trap® Type 1 STXR meets requirements for UL1449 Fourth Edition and is ideal for the replacement of obsolete surge arrestors. The STXR Series SPD feature TPMOV® technology inside making them some of the safest products available. With a small, compact design and line or load installation flexibility the STXR series is the perfect fit for branch panel and/or individual equipment protection. Protect your sensitive equipment from costly downtime or damage with these high performance surge protective devices.



Features

- Designed with the industry leading Mersen TPMOV® Technology
- LED status indicator (ON = Good, OFF = Replace)
- NEMA 4X enclosure for outdoor or indoor use
- Fits 3/4" knockouts with 3' leads for easy installation
- Optional mounting bracket for surface mount applications
- For use in ANSI/UL Type 1 or 2 SPD installations
- Up to 7 modes of Protection (L-N, L-L, L-G optional, N-G optional)
- 5-year warranty

Applications

- AC Distribution
- Power supplies
- Drive protection
- Fire alarms
- Control panels
- Telecommunications
- Residential
- IT / Data centers

Approvals

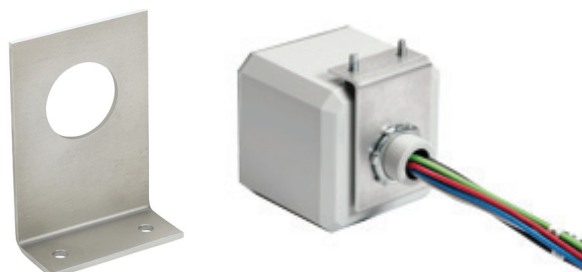
- ANSI/UL 1449 4th Edition, Type 1 SPD, File E210793
- CSA C22.2, Type 1 SPD, File 162842
- ANSI/IEEE C62.41.1, C62.41.2, C62.45
- UL96A Lightning Protection



Ratings

- Volts (U_n): 120-600VAC
- Nominal Discharge Current Rating (I_n): 10 - 20 kA
- Surge Capacity: 50kA
- Short-Circuit Current Rating (SCCR): 200kA

Mersen STXR Series Type 1 Surge Protective Devices												
Part Number	Price	Description	Weight lb [oz]	I _n	Max Continuous Operating Voltage (MCOV)				Voltage Protection Rating (VPR)			
					L-N	L-G	L-L	N-G	L-N	L-G	L-L	N-G
STXR120P05	\$151.00	120V single phase	1.45 [23.2]	20kA	150	-	-	-	700	-	-	-
STXR240S05	\$188.00	240/120V split phase			150	-	300	-	700	-	1200	-
STXR208Y05N	\$206.00	208/120V 3-Phase WYE			150	300	300	150	700	1200	1200	600
STXR480Y05N	\$230.00	480/277V 3-Phase WYE			320	470	640	150	1200	1800	2000	700
STXR600Y05N	\$288.00	600/347V 3-Phase WYE			420	690	840	270	1500	2500	2500	1000
STXR240D05	\$209.00	240V 3-Phase DELTA			-	320	640	-	-	1200	2000	-
STXR480D05	\$209.00	480V 3-Phase DELTA		-	550	1100	-	-	1800	3000	-	
STXRGBK	\$23.50	STXR Mounting bracket kit. Includes (1) 90 degree bracket and (2) 10-32 hex/slotted thread-forming mounting screws. Weight 0.05 lb [0.8 oz].										



STXRGBK

STXR Series Surge Protective Devices

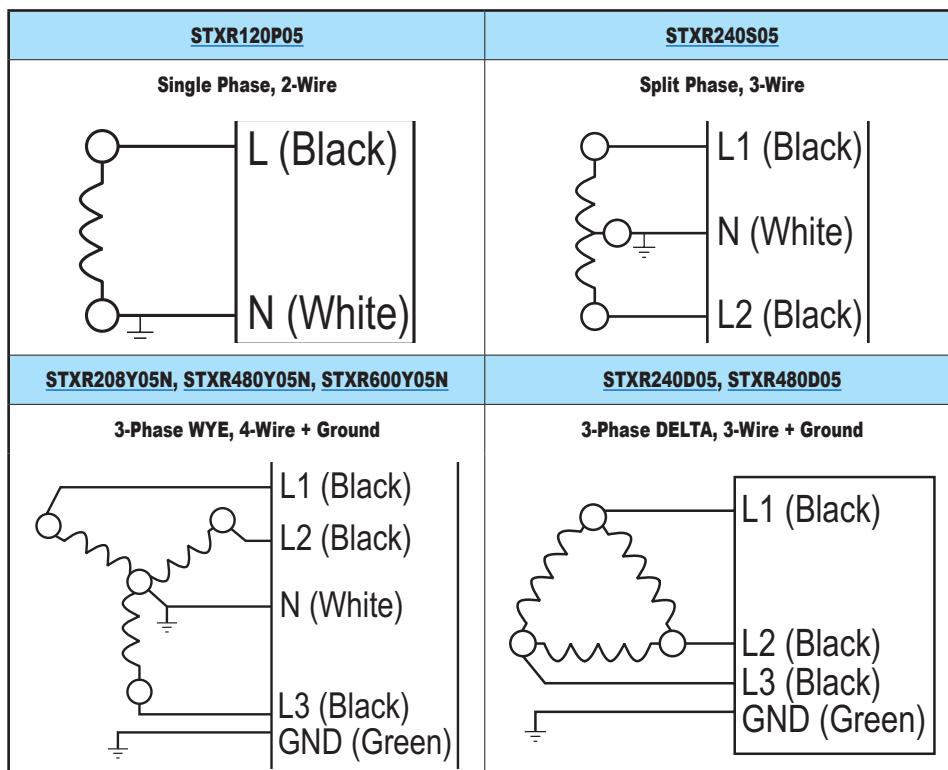
Technical Specifications

Mersen STXR Series Type 1 Surge Protective Devices General Specifications	
Short circuit current rating (SCCR)	200kA
Nominal discharge current rating (I_n)	10 - 20 kA
Surge capacity per phase (I_{max})	50kA
Frequency	50/60 Hz
Connection method	Parallel, 3' (1m) 10AWG stranded copper
Circuit placement	Lineside or loadside of service overcurrent protective device
Mounting	3/4" - 14 threaded hub (includes locking washer)
Operating temperature	-40°C to +85°C [-40°F to +185°F]
Storage temperature	-40°C to +85°C [-40°F to +185°F]
Enclosure rating	NEMA 4X non-metallic*
Flammability rating	UL 94-5VA
Operating humidity	0 to 95% non-condensing
Maximum operating altitude	16,000 ft
Visual end-of-life indicator	GREEN = OK; OUT = replace
Enclosure material	Polycarbonate
Enclosure cover material	Lexan polycarbonate
Certification and SPD type	UL 1449 and CSA C22.2 Listed Type 1

*For NEMA 4x installation use appropriate customer supplied gasket, fittings and/or conduit to maintain rating.

To obtain the most current agency approval information, see the Agency Approval Checklist section on the specific part number's web page.

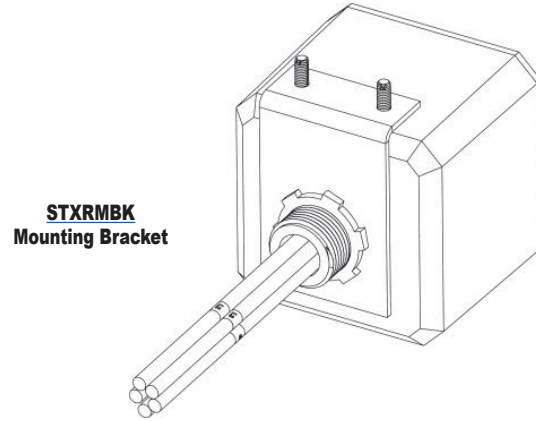
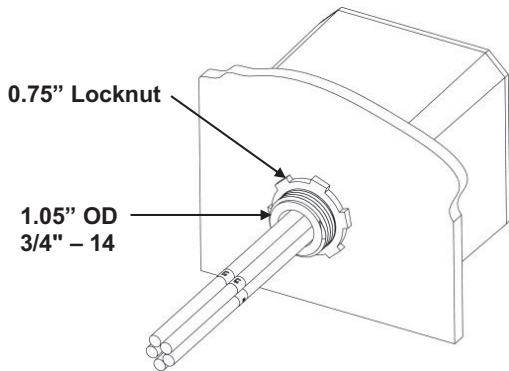
Wiring



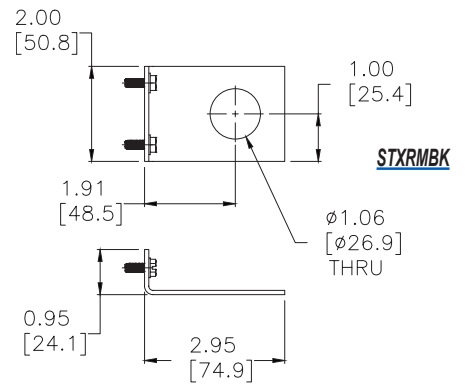
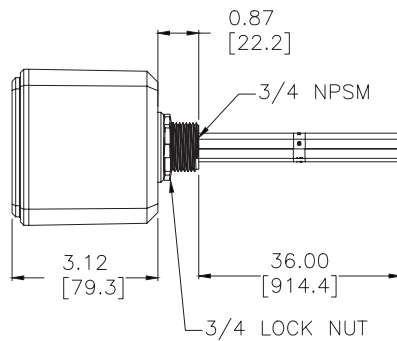
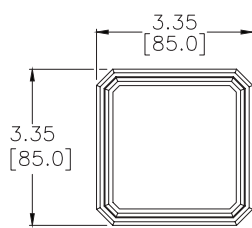
STXR Series Surge Protective Devices



Mounting



Dimensions (in [mm])



STXR Series Type 1 Surge Protective Devices

See our website: www.AutomationDirect.com for complete engineering drawings