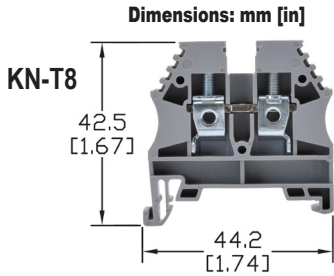




Single-Level Terminal Blocks

- Screw connection terminal
- UL E179129 (For copper wire only. One conductor in terminal only.)
- VDE (IEC 60947-7-1)
- CE (EN 60947-7-1)



See our website: www.AutomationDirect.com for complete engineering drawings

¹UL Usage Group: B, C for 300V or D for 600V

| Ordering Information | | | | | | | | | |
|----------------------|-------------------------------|-----|---------|------------------------------|-----|---------|-----------------------------|-----|---------|
| Colors | Part Number | Qty | Price | Part Number | Qty | Price | Part Number | Qty | Price |
| Gray | KN-T12GRY-100 | 100 | \$34.50 | KN-T10GRY-80 | 80 | \$30.00 | KN-T8GRY-60 | 60 | \$47.00 |
| | KN-T12GRY-25 | 25 | \$9.00 | KN-T10GRY-20 | 20 | \$7.75 | KN-T8GRY-20 | 20 | \$16.00 |
| Blue | KN-T12BLU-100 | 100 | \$34.50 | KN-T10BLU-80 | 80 | \$30.00 | KN-T8BLU-60 | 60 | \$47.00 |
| | KN-T12BLU-25 | 25 | \$9.00 | KN-T10BLU-20 | 20 | \$7.75 | KN-T8BLU-20 | 20 | \$16.00 |
| Brown | KN-T12BRN-100 | 100 | \$34.50 | KN-T10BRN-80 | 80 | \$30.00 | KN-T8BRN-60 | 60 | \$47.00 |
| | KN-T12BRN-25 | 25 | \$9.00 | KN-T10BRN-20 | 20 | \$7.75 | KN-T8BRN-20 | 20 | \$16.00 |
| Black | KN-T12BLK-100 | 100 | \$34.50 | KN-T10BLK-80 | 80 | \$30.00 | KN-T8BLK-60 | 60 | \$47.00 |
| | KN-T12BLK-25 | 25 | \$9.00 | KN-T10BLK-20 | 20 | \$7.75 | KN-T8BLK-20 | 20 | \$16.00 |
| Green | KN-T12GRN-100 | 100 | \$34.50 | KN-T10GRN-80 | 80 | \$30.00 | KN-T8GRN-60 | 60 | \$47.00 |
| | KN-T12GRN-25 | 25 | \$9.00 | KN-T10GRN-20 | 20 | \$7.75 | KN-T8GRN-20 | 20 | \$16.00 |
| Orange | KN-T12ORG-100 | 100 | \$34.50 | KN-T10ORG-80 | 80 | \$30.00 | KN-T8ORG-60 | 60 | \$47.00 |
| | KN-T12ORG-25 | 25 | \$9.00 | KN-T10ORG-20 | 20 | \$7.75 | KN-T8ORG-20 | 20 | \$16.00 |
| Red | KN-T12RED-100 | 100 | \$34.50 | KN-T10RED-80 | 80 | \$30.00 | KN-T8RED-60 | 60 | \$47.00 |
| | KN-T12RED-25 | 25 | \$9.00 | KN-T10RED-20 | 20 | \$7.75 | KN-T8RED-20 | 20 | \$16.00 |
| Yellow | KN-T12YEL-100 | 100 | \$34.50 | KN-T10YEL-80 | 80 | \$30.00 | KN-T8YEL-60 | 60 | \$47.00 |
| | KN-T12YEL-25 | 25 | \$9.00 | KN-T10YEL-20 | 20 | \$7.75 | KN-T8YEL-20 | 20 | \$16.00 |
| White | KN-T12WHT-100 | 100 | \$34.50 | KN-T10WHT-80 | 80 | \$30.00 | KN-T8WHT-60 | 60 | \$47.00 |
| | KN-T12WHT-25 | 25 | \$9.00 | KN-T10WHT-20 | 20 | \$7.75 | KN-T8WHT-20 | 20 | \$16.00 |

| Technical Specifications | | | | | | | | | |
|--------------------------|--|-----|---------------------|---------------------|-----|------------------|---------------------|-----|------------------|
| Model | KN-T12 | | | KN-T10 | | | KN-T8 | | |
| Width | 5mm [0.20 in] | | | 6mm [0.24 in] | | | 8mm [0.31 in] | | |
| Stripping Length | 10mm [0.39 in] | | | 10mm [0.39 in] | | | 12mm [0.47 in] | | |
| Tightening Torque | 0.4 N·m [3.5 lb·in] | | | 0.5 N·m [4.4 lb·in] | | | 0.8 N·m [7.1 lb·in] | | |
| Density | 200/m [60 pcs/ft] | | | 166/m [50 pcs/ft] | | | 125/m [38 pcs/ft] | | |
| UL/CSA Approval | 600V | 20A | 26-12 AWG | 300V | 30A | 26-10 AWG | 300V | 50A | 26-8 AWG |
| VDE Approval | 750V | 24A | 2.5 mm ² | 750V | 32A | 4mm ² | 630V | 41A | 6mm ² |
| CE Conformity | 750V | 24A | 2.5 mm ² | 750V | 32A | 4mm ² | 630V | 41A | 6mm ² |
| SCCR Rating | 100kA | | | 100kA | | | 100kA | | |
| Operating Temperature | Ambient air temperature: -67 to 185°F [-55 to 85°C], Relative humidity: 50% max at 104°F [40°C] and 90% max at 68°F [20°C] | | | | | | | | |
| Material | Current Bar: Copper Alloy / Housing: Polyamide 66 / Screw: Zinc Plated Steel | | | | | | | | |
| DIN Rail Width | 35mm | | | | | | | | |

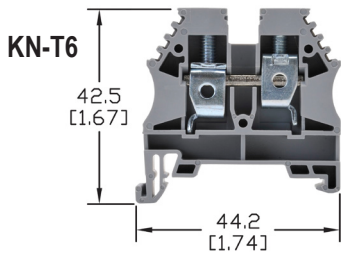
| Accessories | | | | | | | | | | |
|--------------------------------------|----------------------------|-------------------------------|---------|----------------------------|-------------------------------|---------|----------------------------|-------------------------------|---------|----------------------------|
| End Covers (International colors) | Gray | KN-ECT6GRY | 100/pkg | \$26.50 | KN-ECT6GRY | 100/pkg | \$26.50 | KN-ECT6GRY | 100/pkg | \$26.50 |
| | | KN-ECT6GRY-25 | 25/pkg | \$6.00 | KN-ECT6GRY-25 | 25/pkg | \$6.00 | KN-ECT6GRY-25 | 25/pkg | \$6.00 |
| | Blue | KN-ECT6BLU | 10/pkg | \$3.00 | KN-ECT6BLU | 10/pkg | \$3.00 | KN-ECT6BLU | 10/pkg | \$3.00 |
| | | Brown | | KN-ECT6BRN | \$3.00 | | KN-ECT6BRN | \$3.00 | | KN-ECT6BRN |
| | Black | KN-ECT6BLK | | \$3.00 | KN-ECT6BLK | | \$3.00 | KN-ECT6BLK | | \$3.00 |
| | Green | KN-ECT6GRN | | \$3.00 | KN-ECT6GRN | | \$3.00 | KN-ECT6GRN | | \$3.00 |
| | Orange | KN-ECT6ORG | | \$3.00 | KN-ECT6ORG | | \$3.00 | KN-ECT6ORG | | \$3.00 |
| | Red | KN-ECT6RED | | \$3.00 | KN-ECT6RED | | \$3.00 | KN-ECT6RED | | \$3.00 |
| | Yellow | KN-ECT6YEL | | \$3.00 | KN-ECT6YEL | | \$3.00 | KN-ECT6YEL | | \$3.00 |
| White | KN-ECT6WHT | \$3.00 | | KN-ECT6WHT | \$3.00 | | KN-ECT6WHT | \$3.00 | | |
| Separators (International colors) | Gray | KN-ST1GRY | | 25/pkg | \$12.50 | | KN-ST1GRY | 25/pkg | | \$12.50 |
| | Blue | KN-ST1BLU | 10/pkg | \$4.75 | KN-ST1BLU | 10/pkg | \$4.75 | KN-ST1BLU | 10/pkg | \$4.75 |
| | Brown | KN-ST1BRN | | \$4.75 | KN-ST1BRN | | \$4.75 | KN-ST1BRN | | \$4.75 |
| | Black | KN-ST1BLK | | \$4.75 | KN-ST1BLK | | \$4.75 | KN-ST1BLK | | \$4.75 |
| | Green | KN-ST1GRN | | \$4.75 | KN-ST1GRN | | \$4.75 | KN-ST1GRN | | \$4.75 |
| | Orange | KN-ST1ORG | | \$4.75 | KN-ST1ORG | | \$4.75 | KN-ST1ORG | | \$4.75 |
| | Red | KN-ST1RED | | \$4.75 | KN-ST1RED | | \$4.75 | KN-ST1RED | | \$4.75 |
| | Yellow | KN-ST1YEL | | \$4.75 | KN-ST1YEL | | \$4.75 | KN-ST1YEL | | \$4.75 |
| White | KN-ST1WHT | \$4.75 | | KN-ST1WHT | \$4.75 | | KN-ST1WHT | \$4.75 | | |
| Jumpers | 2-pole | KN-2J12 | 25/pkg | \$12.00 | KN-2J10 | 25/pkg | \$17.00 | KN-2J8 | 25/pkg | \$18.00 |
| | 3-pole | KN-3J12 | 20/pkg | \$14.50 | KN-3J10 | 20/pkg | \$20.50 | KN-3J8 | 20/pkg | \$22.00 |
| | 4-pole | KN-4J12 | 15/pkg | \$18.00 | KN-4J10 | 15/pkg | \$20.50 | KN-4J8 | 15/pkg | \$21.50 |
| | 10-pole | KN-10J12 | 5/pkg | \$12.00 | KN-10J10 | 5/pkg | \$14.50 | KN-10J8 | 5/pkg | \$17.00 |
| Comb-type jumper / 2-pole | KN-2JCC12 | 25/pkg | \$15.50 | KN-2JCC10 | 25/pkg | \$31.00 | KN-2JCC8 | 25/pkg | \$32.50 | |
| Top Cover / Blank | KN-TC-1 | 25/pkg | \$9.75 | KN-TC-1 | 25/pkg | \$9.75 | KN-TC-1 | 25/pkg | \$9.75 | |
| Top Cover / Symbol | KN-TC-1S | 25/pkg | \$14.00 | KN-TC-1S | 25/pkg | \$14.00 | KN-TC-1S | 25/pkg | \$14.00 | |
| Marking Tags | KN-L5 Series | | | KN-L5 Series | | | KN-L5 / KN-L6P5 Series | | | |



Single-Level Terminal Blocks

- Screw connection terminal
- UL E179129
(For copper wire only. One conductor in terminal only.)
- VDE (IEC 60947-7-1)
- CE (EN 60947-7-1)

Dimensions: mm [in]



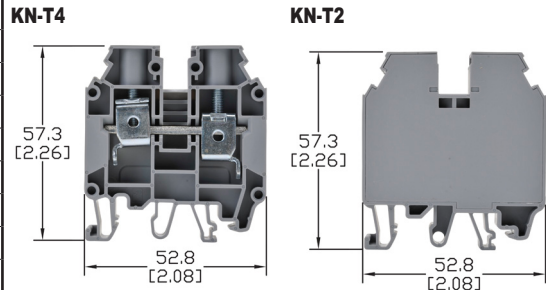
See our website: www.AutomationDirect.com for complete engineering drawings

¹UL Usage Group: B, C for 300V or D for 600V

Ordering Information

| Colors | Part Number | Qty | Price | Part Number | Qty | Price | Part Number | Qty | Price |
|--------|-----------------------------|-----|---------|-----------------------------|-----|---------|-----------------------------|-----|----------|
| Gray | KN-T6GRY-50 | 50 | \$52.00 | KN-T4GRY | 50 | \$87.00 | KN-T2GRY | 40 | \$109.00 |
| | KN-T6GRY-25 | 25 | \$26.50 | KN-T4GRY-25 | 25 | \$54.00 | KN-T2GRY-10 | 10 | \$28.00 |
| Blue | KN-T6BLU-50 | 50 | \$52.00 | KN-T4BLU | 50 | \$87.00 | KN-T2BLU | 40 | \$109.00 |
| | KN-T6BLU-25 | 25 | \$26.50 | KN-T4BLU-25 | 25 | \$54.00 | KN-T2BLU-10 | 10 | \$28.00 |
| Brown | KN-T6BRN-50 | 50 | \$52.00 | | | | | | |
| | KN-T6BRN-25 | 25 | \$26.50 | | | | | | |
| Black | KN-T6BLK-50 | 50 | \$52.00 | | | | | | |
| | KN-T6BLK-25 | 25 | \$26.50 | | | | | | |
| Green | KN-T6GRN-50 | 50 | \$52.00 | | | | | | |
| | KN-T6GRN-25 | 25 | \$26.50 | | | | | | |
| Orange | KN-T6ORG-50 | 50 | \$52.00 | | | | | | |
| | KN-T6ORG-25 | 25 | \$26.50 | | | | | | |
| Red | KN-T6RED-50 | 50 | \$52.00 | | | | | | |
| | KN-T6RED-25 | 25 | \$26.50 | | | | | | |
| Yellow | KN-T6YEL-50 | 50 | \$52.00 | | | | | | |
| | KN-T6YEL-25 | 25 | \$26.50 | | | | | | |
| White | KN-T6WHT-50 | 50 | \$52.00 | | | | | | |
| | KN-T6WHT-25 | 25 | \$26.50 | | | | | | |

Dimensions: mm [in]



Technical Specifications

| Model | KN-T6 | | | KN-T4 | | | KN-T2 | | |
|-----------------------|--|-----|-------------------|----------------------|-----|-------------------|----------------------|------|-------------------|
| Width | 10mm [0.39 in] | | | 12mm [0.47 in] | | | 16mm [0.63 in] | | |
| Stripping Length | 12mm [0.47 in] | | | 16mm [0.63 in] | | | 18mm [0.71 in] | | |
| Tightening Torque | 1.2 N·m [10.6 lb·in] | | | 1.2 N·m [10.6 lb·in] | | | 2.5 N·m [22.1 lb·in] | | |
| Density | 100/m [33 pcs/ft] | | | 83/m [25 pcs/ft] | | | 62/m [19 pcs/ft] | | |
| UL/CSA Approval | 300V | 65A | 16-6 AWG | 600V | 80A | 12-4 AWG | 600V | 115A | 10-2 AWG |
| VDE Approval | 630V | 57A | 10mm ² | 750V | 76A | 16mm ² | 750V | 125A | 35mm ² |
| CE Conformity | 630V | 57A | 10mm ² | 750V | 76A | 16mm ² | 750V | 125A | 35mm ² |
| SCCR Rating | 100kA | | | 100kA | | | 100kA | | |
| Operating Temperature | Ambient air temperature: -67 to 185°F [-55 to 85°C], Relative humidity: 50% max at 104°F [40°C] and 90% max at 68°F [20°C] | | | | | | | | |
| Material | Current Bar: Copper Alloy / Housing: Polyamide 66 / Screws: Zinc Plated Steel | | | | | | | | |
| DIN Rail Width | 35mm | | | | | | | | |

Accessories

| | | | | | | | | | | | |
|--------------------------------------|---------------------------|-------------------------------|---------|--------------------------|----------------------------|---------------------------|--------------------------|--|---------------------------|---------|--------|
| End Covers (International colors) | Gray | KN-ECT6GRY | 100/pkg | \$26.50 | KN-ECT4GRY | 25/pkg | \$12.50 | Note: KN-T2 is totally enclosed, no end cover required | | | |
| | | KN-ECT6GRY-25 | 25/pkg | \$6.00 | — | — | — | | | | |
| | Blue | KN-ECT6BLU | 10/pkg | \$3.00 | KN-ECT4BLU | 10/pkg | \$5.25 | | | | |
| | Brown | KN-ECT6BRN | | — | — | — | | | | | |
| | Black | KN-ECT6BLK | | \$3.00 | — | — | — | | | | |
| | Green | KN-ECT6GRN | | \$3.00 | — | — | — | | | | |
| | Orange | KN-ECT6ORG | | \$3.00 | — | — | — | | | | |
| | Red | KN-ECT6RED | | \$3.00 | — | — | — | | | | |
| | Yellow | KN-ECT6YEL | | \$3.00 | — | — | — | | | | |
| | White | KN-ECT6WHT | | \$3.00 | — | — | — | | | | |
| Separators (International colors) | Gray | KN-ST1GRY | | 25/pkg | \$12.50 | KN-ST2GRY | 25/pkg | \$16.00 | KN-ST3GRY | 10/pkg | \$8.00 |
| | Blue | KN-ST1BLU | | 10/pkg | \$4.75 | KN-ST2BLU | 10/pkg | \$16.00 | KN-ST3BLU | 10/pkg | \$8.00 |
| | Brown | KN-ST1BRN | — | | — | — | — | | | | |
| | Black | KN-ST1BLK | — | | — | — | — | | | | |
| | Green | KN-ST1GRN | — | | — | — | — | | | | |
| | Orange | KN-ST1ORG | — | | — | — | — | | | | |
| | Red | KN-ST1RED | — | | — | — | — | | | | |
| | Yellow | KN-ST1YEL | — | | — | — | — | | | | |
| White | KN-ST1WHT | — | — | | — | — | | | | | |
| Jumpers | 2-pole | KN-2J6 | 25/pkg | \$22.50 | KN-2J4 | 25/pkg | \$35.50 | KN-2J2 | 25/pkg | \$36.00 | |
| | 3-pole | KN-3J6 | 20/pkg | \$23.50 | KN-3J4 | 20/pkg | \$37.00 | KN-3J2 | 20/pkg | \$39.00 | |
| | 4-pole | KN-4J6 | 15/pkg | \$23.50 | KN-4J4 | 15/pkg | \$37.00 | KN-4J2 | 15/pkg | \$39.00 | |
| | 10-pole | KN-10J6 | 5/pkg | \$18.50 | KN-10J4 | 5/pkg | \$29.50 | KN-10J2 | 5/pkg | \$29.50 | |
| Comb-type jumper / 2-pole | KN-2JCC6 | 25/pkg | \$36.00 | — | — | — | — | — | — | | |
| Top Cover / Blank | KN-TC-1 | 25/pkg | \$9.75 | KN-TC-2 | 25/pkg | \$25.00 | KN-TC-2 | 25/pkg | \$25.00 | | |
| Top Cover / Symbol | KN-TC-1S | 25/pkg | \$14.00 | KN-TC-2S | 25/pkg | \$25.00 | KN-TC-2S | 25/pkg | \$25.00 | | |
| Marking Tags | KN-L5/KN-L6P5 Series | | | KN-L5/KN-L6P5 Series | | | KN-L5/KN-L6P5 Series | | | | |

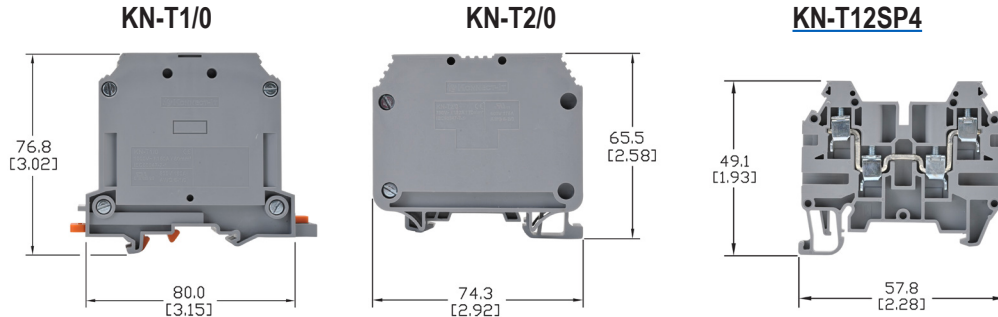


Single-Level Terminal Blocks



Dimensions: mm [in]

- Screw connection terminal
- UL E179129 (For copper wire only. One conductor in terminal only.)
- CE (EN 60947-7-1)



See our website: www.AutomationDirect.com for complete engineering drawings

| Ordering Information | | | | | | | | | |
|----------------------|-------------------------------|-----|----------|----------------------------|-----|---------|------------------------------|-----|----------|
| Colors | Part Number | Qty | Price | Part Number | Qty | Price | Part Number | Qty | Price |
| Gray | KN-T1/0GRY | 25 | \$105.00 | KN-T2/0GRY | 10 | \$66.00 | KN-T12SP4 | 100 | \$192.00 |
| | KN-T1/0GRY-10 | 10 | \$40.50 | — | — | — | KN-T12SP4-25 | 25 | \$63.00 |
| Blue | KN-T1/0BLU | 25 | \$105.00 | KN-T2/0BLU | 10 | \$94.00 | — | — | — |
| | KN-T1/0BLU-10 | 10 | \$40.50 | — | — | — | — | — | — |

| Technical Specifications | | | | | | | | | |
|------------------------------|--|------|-------------------|----------------------|------|-------------------|---------------------------------------|-----|---------------------|
| Model | KN-T1/0 | | | KN-T2/0 | | | KN-T12SP4 | | |
| Width | 20mm [0.79 in] | | | 22mm [0.87 in] | | | 5mm [0.20 in] | | |
| Stripping Length | 20mm [0.79 in] | | | 20mm [0.79 in] | | | 10mm [0.39 in] | | |
| Tightening Torque | 6.0 N·m [53.1 lb-in] | | | 6.0 N·m [53.1 lb-in] | | | 0.5 N·m [4.4 lb-in] | | |
| Density | 50/m [15 pcs/ft] | | | 45/m [13 pcs/ft] | | | 200/m [60 pcs/ft] | | |
| UL/CSA Approval | 600V | 150A | 6-1/0 AWG | 600V | 175A | 6-2/0 AWG | 600V | 20A | 26-12 AWG |
| CE Conformity | 1000V | 150A | 50mm ² | 750V | 192A | 70mm ² | 750V | 24A | 2.5 mm ² |
| SCCR Rating | 100kA | | | 100kA | | | 100kA per Table SB4.1, 2009, UL 508A. | | |
| Operating Temperature | Ambient air temperature: -67 to 185°F [-55 to 85°C], Relative humidity: 50% max at 104°F [40°C] and 90% max at 68°F [20°C] | | | | | | | | |
| Material | Current Bar: Copper Alloy / Housing: Polyamide 66 / Screws: Zinc Plated Steel | | | | | | | | |
| DIN Rail Width | 35mm | | | | | | | | |

| Accessories | | | | | | | | | | |
|---------------------|-------------------|--------------------------|-------|---------|--------------------------------|---|---|-----------------------------|--------|---------|
| End Covers | Gray | — | — | — | — | — | — | KN-ECT12SP4 | 25/pkg | \$12.00 |
| Jumpers | 2-pole | KN-2J1/0 | 5/pkg | \$11.00 | — | — | — | KN-2JM12 | 25/pkg | \$10.50 |
| | 3-pole | KN-3J1/0 | 5/pkg | \$18.50 | — | — | — | KN-3JM12 | 20/pkg | \$12.00 |
| | 4-pole | KN-4J1/0 | 5/pkg | \$23.50 | — | — | — | KN-4JM12 | 15/pkg | \$12.00 |
| | 10-pole | — | — | — | — | — | — | KN-10JM12 | 5/pkg | \$13.50 |
| Marking Tags | No tags available | | | | KN-L5 Series KN-L6P5 Series | | | KN-L5 Series | | |



100kA Terminal Block Short-Circuit Current Rating Data

| Short-Circuit Current Rating Data | | | | | | | | | | |
|-----------------------------------|---------------------------------------|-------|-----------------------------|---------|-----------|-----------|---------|----------|-------------|-----------|
| Part Number | Suitable Copper Conductor Range (AWG) | | Fuse Class Maximum Amperage | | | | | | SCCR Rating | Volts Max |
| | Line | Load | Class J | Class T | Class RK1 | Class RK5 | Class G | Class CC | | |
| KN-T12 ² | 26-12 | 26-12 | 20 | 20 | — | — | 20 | 20 | 100 kA | 600 |
| KN-T10 ² | 26-10 | 26-10 | 30 | 30 | — | — | 30 | 30 | 100 kA | 600 |
| KN-T8 ² | 26-8 | 26-8 | 50 | 50 | 30 | — | 45 | 30 | 100 kA | 600 |
| KN-T6 ² | 16-6 | 16-6 | 80 | 80 | 60 | 30 | 60 | 30 | 100 kA | 600 |
| KN-T4 ² | 12-4 | 12-4 | 80 | 80 | 60 | 30 | 60 | 30 | 100 kA | 600 |
| KN-T2 ² | 12-2 | 12-2 | 125 | 125 | 100 | 30 | 60 | 30 | 100 kA | 600 |
| KN-T1/0 ³ | 6-1/0 | 6-1/0 | 150 | 150 | 100 | 30 | 60 | 30 | 100 kA | 600 |
| KN-T2/0 ³ | 6-2/0 | 6-2/0 | 225 | 225 | 100 | 60 | 60 | 30 | 100 kA | 600 |
| KN-D12 ^{1 2} | 26-12 | 26-12 | 20 | 20 | — | — | 20 | 20 | 100 kA | 600 |
| KN-D10 ^{1 2} | 26-10 | 26-10 | 30 | 30 | — | — | 30 | 30 | 100 kA | 600 |
| KN-TL14 ² | 24-12 | 24-12 | 30 | 30 | — | — | 30 | 30 | 100 kA | 600 |
| KN-TG12 ² | 24-12 | 24-12 | 30 | 30 | — | — | 30 | 30 | 100 kA | 600 |
| KN-M12 ² | 26-12 | 26-12 | 30 | 30 | — | — | 30 | 30 | 100 kA | 600 |
| KN-M10 ² | 14-12 | 14-12 | 30 | 30 | — | — | 30 | 30 | 100 kA | 600 |

Note: ¹ KN-D12 and KN-D10 have optional short circuit rating evaluated for use with copper conductors only. Must be protected by the max ampere and Class of overcurrent protective device noted above.

²The terminal block short-circuit rating for KN-D12 and KN-D10 were determined based on testing in a minimum size enclosure measuring 4x4x6 inches. The suitability of smaller enclosures shall be determined in the end-use investigation.

³The terminal block short-circuit rating for KN-T1/0 and KN-T2/0 were determined based on testing in a minimum size enclosure measuring 12x12x6 inches. The suitability of smaller enclosures shall be determined in the end-use investigation.



KONNECT-IT Accessories

Multi-Pole Jumper Bars

Multi-pole jumper bars provide terminal block connection flexibility. Screw-down connection jumpers feature all-metal construction and can be installed quickly just by tightening the screws. Screwless comb-style jumpers are also available. See next page for the larger J1/0 jumper installation instructions.

KN-10J12



KN-2JM12



KN-2JCC8



Multi-Pole Jumper Bars Ordering Information

| Type | Part Number | Price | Qty | Number of Poles | Rating | | Tightening Torque | Dimensions - mm [in] | | | Fig. | Works With | | | | |
|----------------------------|---------------------------|---------|-----|-----------------|--------|---------------------------------|-------------------------------|---------------------------------|----------------|---------------|---|---|----------------|---------------|---|-----------------------|
| | | | | | (V) | (A) | | Height | Length | Width | | | | | | |
| Screw-down connection | KN-2J12 | \$12.00 | 25 | 2 | 750 | 24 | 0.4–0.6 Nm [3.5–5.3 lb-in] | 15.8 [0.62] | 10.1 [0.40] | 4.4 [0.17] | 1 | KN-T12xx KN-D12xx KN-D12X KN-D12DR1 KN-D12LEDxx | | | | |
| | KN-3J12 | \$14.50 | 20 | 3 | 750 | 24 | | | 15.3 [0.60] | | | | | | | |
| | KN-4J12 | \$18.00 | 15 | 4 | 750 | 24 | | | 20.4 [0.80] | | | | | | | |
| | KN-10J12 | \$12.00 | 5 | 10 | 750 | 24 | 0.6–0.8 Nm [5.3–7.1 lb-In] | 15.5 [0.61] | 51.1 [2.01] | 6.0 [0.24] | 1 | KN-T10xx KN-D10xx KN-D10X KN-D10DR1 KN-D10LEDxx | | | | |
| | KN-2J10 | \$17.00 | 25 | 2 | 750 | 32 | | | 10.8 [0.43] | | | | | | | |
| | KN-3J10 | \$20.50 | 20 | 3 | 750 | 32 | | | 17.0 [0.67] | | | | | | | |
| | KN-4J10 | \$20.50 | 15 | 4 | 750 | 32 | | | 23.0 [0.91] | | | | | | | |
| | KN-10J10 | \$14.50 | 5 | 10 | 750 | 32 | 59.0 [2.32] | 0.6–0.8 Nm [5.3–7.1 lb-In] | 15.5 [0.61] | 6.0 [0.24] | 1 | KN-T8xx | | | | |
| | KN-2J8 | \$18.00 | 25 | 2 | 630 | 41 | 14.3 [0.56] | | | | | | | | | |
| | KN-3J8 | \$22.00 | 20 | 3 | 630 | 41 | 22.3 [0.88] | | | | | | | | | |
| | KN-4J8 | \$21.50 | 15 | 4 | 630 | 41 | 30.3 [1.19] | | | | | | | | | |
| | KN-10J8 | \$17.00 | 5 | 10 | 630 | 41 | 78.3 [3.08] | | | | | | | | | |
| | KN-2J6 | \$22.50 | 25 | 2 | 630 | 57 | 0.6–0.8 Nm [5.3–7.1 lb-In] | 15.5 [0.61] | 18.0 [0.71] | 6.0 [0.24] | 1 | KN-T6xx | | | | |
| | KN-3J6 | \$23.50 | 20 | 3 | 630 | 57 | | | 28.0 [1.10] | | | | | | | |
| | KN-4J6 | \$23.50 | 15 | 4 | 630 | 57 | | | 38.0 [1.50] | | | | | | | |
| | KN-10J6 | \$18.50 | 5 | 10 | 630 | 57 | 98.0 [3.86] | 0.6–0.8 Nm [5.3–7.1 lb-In] | 23.0 [0.91] | 6.0 [0.24] | 1 | KN-T4xx | | | | |
| | KN-2J4 | \$35.50 | 25 | 2 | 750 | 76 | 21.0 [0.83] | | | | | | | | | |
| | KN-3J4 | \$37.00 | 20 | 3 | 750 | 76 | 33.0 [1.30] | | | | | | | | | |
| | KN-4J4 | \$37.00 | 15 | 4 | 750 | 76 | 45.0 [1.77] | | | | | | | | | |
| | KN-10J4 | \$29.50 | 5 | 10 | 750 | 76 | 117.0 [4.61] | 1.2–1.4 Nm [10.6–12.4 lb-In] | 21.0 [0.83] | 8.0 [0.31] | 1 | KN-T2xx | | | | |
| KN-2J2 | \$36.00 | 25 | 2 | 750 | 125 | 29.0 [1.14] | | | | | | | | | | |
| KN-3J2 | \$39.00 | 20 | 3 | 750 | 125 | 45.0 [1.77] | | | | | | | | | | |
| KN-4J2 | \$39.00 | 15 | 4 | 750 | 125 | 61.0 [2.40] | | | | | | | | | | |
| KN-10J2 | \$29.50 | 5 | 10 | 750 | 125 | 157.0 [6.18] | | | | | | | | | | |
| KN-2J1/0 | \$11.00 | 5 | 2 | 1000 | 150 | 2.5–3.5 Nm [22.1–31.0 lb-In] | 22.3 [0.88] | 36.0 [1.42] | 12.0 [0.47] | 2 | KN-T1/0xx | | | | | |
| KN-3J1/0 | \$18.50 | 5 | 3 | 1000 | 150 | | | 56.0 [2.20] | | | | | | | | |
| KN-4J1/0 | \$23.50 | 5 | 4 | 1000 | 150 | | | 76.0 [2.99] | | | | | | | | |
| KN-2JTL12 | \$18.50 | 25 | 2 | 440 | 24 | 0.4–0.6 Nm [3.5–5.3 lb-In] | 15.5 [0.61] | 11.0 [0.43] | 4.4 [0.17] | 1 | KN-DG12 KN-TG12 KN-TL14 KN-TL14S KN-TL14SLN KN-TL14SLP | | | | | |
| KN-3JTL12 | \$23.00 | 20 | 3 | 440 | 24 | | | 17.0 [0.67] | | | | | | | | |
| KN-4JTL12 | \$21.50 | 15 | 4 | 440 | 24 | | | 23.0 [0.91] | | | | | | | | |
| KN-10JTL12 | \$18.50 | 5 | 10 | 440 | 24 | 59.0 [2.32] | - | 23.2 [0.91] | 2.7 [0.11] | 3 | KN-M10xx KN-KBD10 | | | | | |
| KN-2JM10 | \$11.00 | 25 | 2 | 750 | 32 | 9.5 [0.37] | | | | | | | | | | |
| KN-3JM10 | \$13.50 | 20 | 3 | 750 | 32 | 15.5 [0.61] | | | | | | | | | | |
| KN-4JM10 | \$15.50 | 15 | 4 | 750 | 32 | 21.5 [0.85] | | | | | | | | | | |
| KN-10JM10 | \$14.50 | 5 | 10 | 750 | 32 | 57.5 [2.26] | | | | | | | | | | |
| KN-2JM12 | \$10.50 | 25 | 2 | 750 | 24 | 8.0 [0.31] | | | | | | - | 21.7 [0.85] | 2.3 [0.09] | 3 | KN-M12xx KN-T12SP4 |
| KN-3JM12 | \$12.00 | 20 | 3 | 750 | 24 | 13.0 [0.51] | | | | | | | | | | |
| KN-4JM12 | \$12.00 | 15 | 4 | 750 | 24 | 18.0 [0.71] | | | | | | | | | | |
| KN-10JM12 | \$13.50 | 5 | 10 | 750 | 24 | 48.0 [1.89] | | | | | | | | | | |
| Screwless Comb-style | KN-2JCC12 | \$15.50 | 25 | 2 | 750 | 24 | - | 23.7 [0.93] | 8.0 [0.31] | 2.8 [0.11] | 4 | KN-T12xx | | | | |
| | KN-2JCC10 | \$31.00 | 25 | | 750 | 32 | - | 24.7 [0.97] | 9.5 [0.37] | | | KN-T10xx | | | | |
| | KN-2JCC8 | \$32.50 | 25 | | 630 | 41 | - | 25.6 [1.01] | 13.5 [0.53] | | | KN-T8xx | | | | |
| | KN-2JCC6 | \$36.00 | 25 | | 630 | 57 | - | 26.7 [1.05] | 16.0 [0.63] | | | 3.9 [0.15] | KN-T6xx | | | |

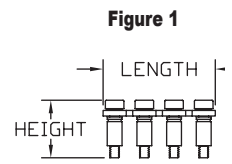


Figure 1

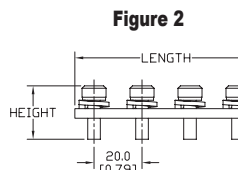


Figure 2

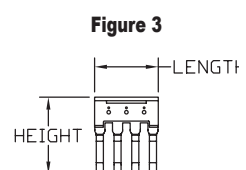


Figure 3

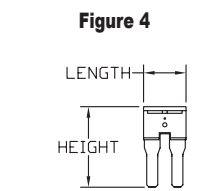


Figure 4

Please visit our website www.AutomationDirect.com for complete engineering drawings.

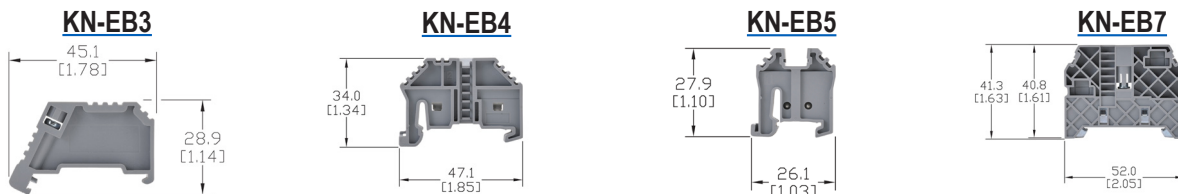


KONNECT-IT Accessories

End Brackets

End brackets prevent terminal blocks and other DIN rail mount components and devices from moving laterally on the rail. They are constructed from polyamide 66 and available in configurations for 35mm and 15mm DIN rails.

Dimensions mm [in]

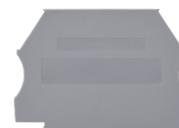


| End Brackets Ordering Information | | | | | | | | | | | | |
|-----------------------------------|---|---------|---------|-----------------------|---------|---------|-----------------------|---------|---------|------------------------|--------|---------|
| Gray End Brackets | KN-EB3 | 100/pkg | \$48.00 | KN-EB4 | 100/pkg | \$50.00 | KN-EB5 | 100/pkg | \$73.00 | KN-EB7 | 50/pkg | \$50.00 |
| | KN-EB3-10 | 10/pkg | \$6.00 | KN-EB4-10 | 10/pkg | \$4.75 | KN-EB5-10 | 10/pkg | \$8.50 | KN-EB7-10 | 10/pkg | \$9.75 |
| Technical Specifications | | | | | | | | | | | | |
| Description | Screw-type end bracket | | | Screwless end bracket | | | Screwless end bracket | | | Screw-type end bracket | | |
| Bracket Width | 8 mm [0.31 in] | | | 8 mm [0.31 in] | | | 8 mm [0.31 in] | | | 10 mm [0.39 in] | | |
| DIN Rail Width | 35 mm | | | 35 mm | | | 15 mm | | | 35 mm | | |
| Material | Housing: Polyamide 66 / Clamping Connector: Zinc Plated Steel | | | | | | | | | | | |
| End Bracket Accessories | | | | | | | | | | | | |
| Label Holder | — | — | — | KN-MA-1 | 25/pkg | \$21.50 | — | — | — | KN-MA-2 | 50/pkg | \$54.00 |
| | — | — | — | KN-MA-1-10 | 10/pkg | \$9.75 | — | — | — | KN-MA-2-10 | 10/pkg | \$12.50 |
| Marking Tags | KN-L5 Series or KN-L6P5 Series | | | | | | | | | | | |

End Covers

End covers are used to cover the open side of sectional DIN rail mount terminal blocks. They should be used at the end of an assembly of identical terminal blocks or whenever there is a change in the physical size of the terminal block.

Material: Polyamide 66



| End Covers Ordering Information | | | | | | | | | | | |
|---------------------------------|--------|-----------------------------------|------------------------------------|---------------------|------------------|--------------------|-----------------------------------|-----------------------------------|--------------------|---------|---------|
| Part Number | Color | Dimensions H x L x W mm [in] | Works With | Qty | Price | Part Number | Color | Dimensions H x L x W mm [in] | Works With | Qty | Price |
| KN-ECT6GRY | gray | 34.0x42.7x1.3 [1.34x1.68x0.05] | KN-T12 KN-T10 KN-T8 KN-T6 | 100 | \$26.50 | KN-ECDORG | orange | 48.2x63.2x1.3 [1.90x2.49x0.05] | KN-D10 KN-D12 | 10 | \$6.00 |
| KN-ECT6GRY-25 | gray | | | KN-ECDRED | red | \$6.00 | | | | | |
| KN-ECT6BLU | blue | | | KN-ECDYEL | yellow | \$3.00 | | | | | |
| KN-ECT6BLK | black | | | KN-ECTL | gray | \$3.00 | 54.7x87.1x1.3 [2.15x3.43x0.05] | KN-TL14 | 10 | \$3.75 | |
| KN-ECT6BRN | brown | | | KN-ECTLS | gray | \$3.00 | 54.7x72.8x1.2 [2.15x2.87x0.05] | KN-TL14S | 10 | \$4.75 | |
| KN-ECT6GRN | green | | | KN-ECDG12 | gray | \$3.00 | 48.0x71.4x1.2 [1.89x2.81x0.05] | KN-DG12 | 10 | \$4.75 | |
| KN-ECT6ORG | orange | | | KN-ECTG12 | gray | \$3.00 | 62.5x87.5x1.2 [2.46x3.44x0.05] | KN-TG12 | 10 | \$4.75 | |
| KN-ECT6RED | red | | | KN-ECMGRY | gray | \$3.00 | 28.1x27.0x3.0 [1.11x1.06x0.12] | KN-M12 KN-M10 | 100 | \$55.00 | |
| KN-ECT6WHT | white | | | KN-ECMGRY-10 | gray | \$3.00 | | | 10 | \$6.00 | |
| KN-ECT6YEL | yellow | | | KN-ECMBLU | blue | \$3.00 | | | 10 | \$6.00 | |
| KN-ECT4GRY | gray | 45.7x52.8x1.2 [1.80x2.08x0.05] | KN-T4 | 25 | \$12.50 | KN-ECMGRN | green/ yellow | 28.1x27.0x3.0 [1.11x1.06x0.12] | KN-MG12 KN-MG10 | 10 | \$6.00 |
| KN-ECT4BLU | blue | | | KN-ECG12SP4 | green/ yellow | 10 | \$5.25 | 39.7x57.1x1.2 [1.56x2.25x0.05] | KN-G12SP4 | 10 | \$4.75 |
| KN-ECDGRY | gray | 48.2x63.2x1.3 [1.90x2.49x0.05] | KN-D10 KN-D12 | 25 | \$13.50 | KN-ECT12SP4 | gray | 39.7x57.1x1.2 [1.56x2.25x0.05] | KN-T12SP4 | 25 | \$12.00 |
| KN-ECDBLU | blue | | | KN-ECF10 | gray | 10 | \$6.00 | 27.3x59.6x1.2 [1.07x2.35x0.05] | KN-F10 | 25 | \$14.50 |
| KN-ECDBLK | black | | | KN-ECKBD | gray | 10 | \$6.00 | 37.1x53.5x1.2 [1.46x2.11x0.05] | KN-KDB10 | 10 | \$6.00 |
| KN-ECDGRN | green | | | | | 10 | \$6.00 | | | | |



KONNECT-IT Accessories

Separators

Separators are used to segment banks of terminal blocks. Allows you to maintain a single row of terminal blocks, but have separate power source clusters.

| Separators Ordering Information | | | | | | | |
|---------------------------------|--------|------------------------------------|----------------------|-------------|------------|-----|---------|
| Part Number | Color | Works With | Dimensions - mm [in] | | | Qty | Price |
| | | | Height | Length | Thickness | | |
| KN-ST1GRY | Gray | KN-T12 KN-T10 KN-T8 KN-T6 | 39.0 [1.54] | 42.5 [1.67] | 1.2 [0.05] | 25 | \$12.50 |
| KN-ST1BLU | Blue | | | | | | \$4.75 |
| KN-ST1BLK | Black | | | | | | \$4.75 |
| KN-ST1BRN | Brown | | | | | | \$4.75 |
| KN-ST1GRN | Green | | | | | | \$4.75 |
| KN-ST1ORG | Orange | | | | | | \$4.75 |
| KN-ST1RED | Red | | | | | | \$4.75 |
| KN-ST1WHT | White | | | | | | \$4.75 |
| KN-ST1YEL | Yellow | | | | | | \$4.75 |
| KN-ST2GRY | Gray | | | | | | KN-T4 |
| KN-ST2BLU | Blue | \$16.00 | | | | | |
| KN-ST3GRY | Gray | KN-T2 | 62.6 [2.46] | 53.1 [2.09] | 1.5 [0.06] | 10 | \$8.00 |
| KN-ST3BLU | Blue | | | | | | \$8.00 |

KN-ST1GRY



Top Covers and Label Holders

| Top Covers and Label Holders Ordering Information | | | | | | | |
|---|--|------------------------------------|----------------------|----------------|----------------|-----|---------|
| Part Number | Description | Works With | Dimensions - mm [in] | | | Qty | Price |
| | | | Height | Length | Width | | |
| KN-TC-1 | Top cover for Konnect-It terminal block, blank, white | KN-T12 KN-T10 KN-T8 KN-T6 | 6.8 [0.27] | 29.0 [1.14] | 5.8 [0.23] | 25 | \$9.75 |
| KN-TC-1S | Top cover for Konnect-It terminal block, printed electric symbol, white | | | | | 25 | \$14.00 |
| KN-TC-2 | Top cover for Konnect-It terminal block, blank, white | KN-T4 KN-T2 | 7.3 [0.29] | 35.8 [1.41] | 9.0 [0.35] | 25 | \$25.00 |
| KN-TC-2S | Top cover for Konnect-It terminal block, printed electric symbol, white | | | | | 25 | \$25.00 |
| KN-MA-1 | Label holder for terminal block group. Label media not included. Adhesive label: Apply on top. | KN-EB4 | 46.2 [1.82] | 46.0 [1.81] | 11.4 [0.45] | 25 | \$21.50 |
| KN-MA-1-10 | Max label dimensions: 7 x 44 mm (0.28 x 1.73 in). | | | | | 10 | \$9.75 |
| KN-MA-2 | Label holder for terminal block group. Label media not included. Adhesive label: Apply on top. | KN-EB7 | 37.5 [1.48] | 46.2 [1.82] | 9.5 [0.37] | 50 | \$54.00 |
| KN-MA-2-10 | Max label dimensions: 7 x 44 mm (0.28 x 1.73 in). | | | | | 10 | \$12.50 |
| KN-MA-3 | Top mounting marking tag adapter for terminal block. Holds up to (4) L5x5 tags | KN-T4 KN-T2 | 9.3 [0.36] | 36.0 [1.42] | 9.0 [0.35] | 25 | \$14.00 |
| KN-MA-4 | Top mounting marking tag adapter for terminal block. Holds up to (4) L5x5 tags | KN-T12 KN-T10 KN-T8 KN-T6 | 9.0 [0.35] | 29.0 [1.14] | 5.7 [0.22] | 25 | \$12.50 |
| KN-MA-5 | Label holder for terminal block group. Label media included. | Attaches to any 35mm DIN rail | 46.4 [1.83] | 44.5 [1.75] | 10.0 [0.39] | 50 | \$44.00 |
| KN-MA-5-25 | Max label dimensions: 10 x 38mm (0.39 x 1.50 in). Thickness 0.30 mm (0.01 in) | | | | | 25 | \$27.00 |

KN-MA-1



KN-MA-2



KN-MA-5



KN-TC-1 / KN-TC-2



KN-TC-1S / KN-TC-2S



KN-MA-3



KN-MA-4





KONNECT-IT Accessories

Marking Tags 5 x 5mm

Use with any KONNECT-IT series terminal blocks.



| 5 x 5mm Marking Tags Ordering Information | | | | | | | | | | | |
|---|---------|---------|-------------------------------|---------|---------|-------------------------------|---------|---------|---------------------------|---------|---------|
| 250 Pieces per Package | | | | | | 500 Pieces per Package | | | | | |
| Part Number | Imprint | Price | Part Number | Imprint | Price | Part Number | Imprint | Price | Part Number | Imprint | Price |
| KN-L5-BLANK-250 | Blank | \$11.50 | KN-L5-A-250 | A | \$11.50 | KN-L5-BLANK | Blank | \$18.00 | KN-L5-A | A | \$22.00 |
| KN-L5-0-250 | 0 | \$11.50 | KN-L5-B-250 | B | \$11.50 | KN-L5-0 | 0 | \$22.00 | KN-L5-B | B | \$22.00 |
| KN-L5-1-250 | 1 | \$11.50 | KN-L5-C-250 | C | \$11.50 | KN-L5-1 | 1 | \$22.00 | KN-L5-C | C | \$22.00 |
| KN-L5-2-250 | 2 | \$11.50 | KN-L5-D-250 | D | \$11.50 | KN-L5-2 | 2 | \$22.00 | KN-L5-D | D | \$22.00 |
| KN-L5-3-250 | 3 | \$11.50 | KN-L5-E-250 | E | \$11.50 | KN-L5-3 | 3 | \$22.00 | KN-L5-E | E | \$22.00 |
| KN-L5-4-250 | 4 | \$11.50 | KN-L5-F-250 | F | \$11.50 | KN-L5-4 | 4 | \$22.00 | KN-L5-F | F | \$22.00 |
| KN-L5-5-250 | 5 | \$11.50 | KN-L5-G-250 | G | \$11.50 | KN-L5-5 | 5 | \$22.00 | KN-L5-G | G | \$22.00 |
| KN-L5-6-250 | 6 | \$11.50 | KN-L5-H-250 | H | \$11.50 | KN-L5-6 | 6 | \$22.00 | KN-L5-H | H | \$22.00 |
| KN-L5-7-250 | 7 | \$11.50 | KN-L5-I-250 | I | \$11.50 | KN-L5-7 | 7 | \$22.00 | KN-L5-I | I | \$22.00 |
| KN-L5-8-250 | 8 | \$11.50 | KN-L5-J-250 | J | \$12.00 | KN-L5-8 | 8 | \$22.00 | KN-L5-J | J | \$22.50 |
| KN-L5-9-250 | 9 | \$11.50 | KN-L5-K-250 | K | \$12.00 | KN-L5-9 | 9 | \$22.00 | KN-L5-K | K | \$22.50 |
| KN-L5-10-250 | 10 | \$11.50 | KN-L5-L-250 | L | \$11.50 | KN-L5-10 | 10 | \$22.00 | KN-L5-L | L | \$22.00 |
| KN-L5-1-10-250 | 1-10 | \$11.50 | KN-L5-M-250 | M | \$12.00 | KN-L5-1-10 | 1-10 | \$22.00 | KN-L5-M | M | \$22.50 |
| KN-L5-11-20-250 | 11-20 | \$11.50 | KN-L5-N-250 | N | \$11.50 | KN-L5-11-20 | 11-20 | \$22.00 | KN-L5-N | N | \$22.00 |
| KN-L5-21-30-250 | 21-30 | \$11.50 | KN-L5-O-250 | O | \$11.50 | KN-L5-21-30 | 21-30 | \$22.00 | KN-L5-O | O | \$22.00 |
| KN-L5-31-40-250 | 31-40 | \$11.50 | KN-L5-P-250 | P | \$12.00 | KN-L5-31-40 | 31-40 | \$22.00 | KN-L5-P | P | \$22.50 |
| KN-L5-41-50-250 | 41-50 | \$11.50 | KN-L5-Q-250 | Q | \$12.00 | KN-L5-41-50 | 41-50 | \$22.00 | KN-L5-Q | Q | \$22.50 |
| KN-L5-1-50-250 | 1-50 | \$11.50 | KN-L5-R-250 | R | \$11.50 | KN-L5-1-50 | 1-50 | \$22.00 | KN-L5-R | R | \$22.00 |
| KN-L5-51-100-250 | 51-100 | \$11.50 | KN-L5-S-250 | S | \$11.50 | KN-L5-51-100 | 51-100 | \$22.00 | KN-L5-S | S | \$22.00 |
| KN-L5-101-150-250 | 101-150 | \$11.50 | KN-L5-T-250 | T | \$11.50 | KN-L5-101-150 | 101-150 | \$22.00 | KN-L5-T | T | \$22.00 |
| KN-L5-151-200-250 | 151-200 | \$11.50 | KN-L5-U-250 | U | \$12.00 | KN-L5-151-200 | 151-200 | \$22.00 | KN-L5-U | U | \$22.50 |
| KN-L5-201-250-250 | 201-250 | \$11.50 | KN-L5-V-250 | V | \$11.50 | KN-L5-201-250 | 201-250 | \$22.00 | KN-L5-V | V | \$22.00 |
| KN-L5-251-300-250 | 251-300 | \$11.50 | KN-L5-W-250 | W | \$12.00 | KN-L5-251-300 | 251-300 | \$22.00 | KN-L5-W | W | \$22.50 |
| KN-L5-301-350-250 | 301-350 | \$11.50 | KN-L5-X-250 | X | \$11.50 | KN-L5-301-350 | 301-350 | \$22.00 | KN-L5-X | X | \$22.00 |
| KN-L5-351-400-250 | 351-400 | \$11.50 | KN-L5-Y-250 | Y | \$11.50 | KN-L5-351-400 | 351-400 | \$22.00 | KN-L5-Y | Y | \$22.00 |
| KN-L5-401-450-250 | 401-450 | \$11.50 | KN-L5-Z-250 | Z | \$12.00 | KN-L5-401-450 | 401-450 | \$22.00 | KN-L5-Z | Z | \$22.50 |
| KN-L5-451-500-250 | 451-500 | \$11.50 | KN-L5-POS-250 | + | \$11.50 | KN-L5-451-500 | 451-500 | \$22.00 | KN-L5-POS | + | \$22.00 |
| KN-L5-L1-250 | L1 | \$11.50 | KN-L5-NEG-250 | - | \$11.50 | KN-L5-L1 | L1 | \$22.00 | KN-L5-NEG | - | \$22.00 |
| KN-L5-L2-250 | L2 | \$11.50 | KN-L5-GND-250 | GND | \$11.50 | KN-L5-L2 | L2 | \$22.00 | KN-L5-GND | GND | \$22.00 |
| KN-L5-L3-250 | L3 | \$11.50 | | | | KN-L5-L3 | L3 | \$22.00 | | | |

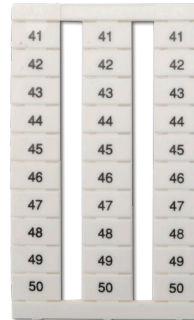


KONNECT-IT Accessories

Marking Tags 6.5 x 10mm

Use with any KONNECT-IT series terminal blocks 6.5mm or wider.

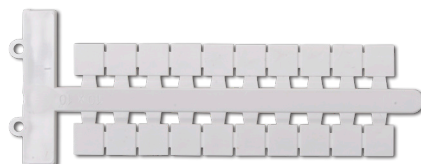
| 6.5 x 10mm Marking Tags Ordering Information | | | |
|--|-----------------|-----|---------|
| Part Number | Description | Qty | Price |
| <u>KN-L6P5-BLNK-250</u> | Blank | 250 | \$30.00 |
| <u>KN-L6P5-1-10-250</u> | Numbered 1-10 | 250 | \$31.50 |
| <u>KN-L6P5-11-20-250</u> | Numbered 11-20 | 250 | \$31.50 |
| <u>KN-L6P5-21-30-250</u> | Numbered 21-30 | 250 | \$31.50 |
| <u>KN-L6P5-31-40-250</u> | Numbered 31-40 | 250 | \$31.50 |
| <u>KN-L6P5-41-50-250</u> | Numbered 41-50 | 250 | \$31.50 |
| <u>KN-L6P5-51-60-250</u> | Numbered 51-60 | 250 | \$31.50 |
| <u>KN-L6P5-61-70-250</u> | Numbered 61-70 | 250 | \$31.50 |
| <u>KN-L6P5-71-80-250</u> | Numbered 71-80 | 250 | \$31.50 |
| <u>KN-L6P5-81-90-250</u> | Numbered 81-90 | 250 | \$32.00 |
| <u>KN-L6P5-91-100-250</u> | Numbered 91-100 | 250 | \$32.00 |
| <u>KN-L6P5-BLNK</u> | Blank | 500 | \$56.00 |
| <u>KN-L6P5-1-10</u> | Numbered 1-10 | 500 | \$57.00 |
| <u>KN-L6P5-11-20</u> | Numbered 11-20 | 500 | \$57.00 |
| <u>KN-L6P5-21-30</u> | Numbered 21-30 | 500 | \$57.00 |
| <u>KN-L6P5-31-40</u> | Numbered 31-40 | 500 | \$57.00 |
| <u>KN-L6P5-41-50</u> | Numbered 41-50 | 500 | \$57.00 |
| <u>KN-L6P5-51-60</u> | Numbered 51-60 | 500 | \$57.00 |
| <u>KN-L6P5-61-70</u> | Numbered 61-70 | 500 | \$57.00 |
| <u>KN-L6P5-71-80</u> | Numbered 71-80 | 500 | \$57.00 |
| <u>KN-L6P5-81-90</u> | Numbered 81-90 | 500 | \$58.00 |
| <u>KN-L6P5-91-100</u> | Numbered 91-100 | 500 | \$58.00 |



Marking Tags 5 x 10mm, 6 x 10mm, 10 x 10mm

| Marking Tags Ordering Information | | | |
|---|--|-----|---------|
| Part Number* | Description | Qty | Price |
| <u>KN-L5X-BLNK-220</u> | Blank marking tag, 5x10mm, use with any Konnect-It terminal block series | 220 | \$10.50 |
| <u>KN-L6X-BLNK-180</u> | Blank marking tag, 6x10mm, use with any Konnect-It terminal block 6mm or wider | 180 | \$9.75 |
| <u>KN-L10X-BLNK-100</u> | Blank marking tag, 10x10mm, use with any Konnect-It terminal block 10mm or wider | 100 | \$14.50 |
| <u>KN-L5X-BLNK</u> | Blank marking tag, 5x10mm, use with any Konnect-It terminal block series | 440 | \$19.50 |
| <u>KN-L6X-BLNK</u> | Blank marking tag, 6x10mm, use with any Konnect-It terminal block 6mm or wider | 360 | \$18.50 |
| <u>KN-L10X-BLNK</u> | Blank marking tag, 10x10mm, use with any Konnect-It terminal block 10mm or wider | 200 | \$26.50 |

*Does not fit any KN-T1/0xx or [KN-G1/0](#) series block



DINnectors[®] Accessories

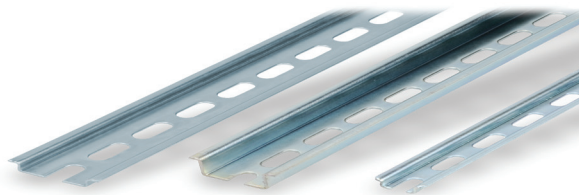
Steel DIN Rails Features

35mm wide

- Available in 1-meter lengths
- 7.5 mm-high rails primarily used to mount terminal blocks, relays, timers and small PLCs such as the BRX, CLICK, DirectLogic and Productivity series. 15mm-high rails for mounting larger and heavier components such as contactors and larger PLCs

15mm wide

- Available in 1-meter lengths
- DN-R15S1 exclusively for mounting mini terminal blocks such as the [DN-M10-A](#)



| Steel DIN Rails Specifications | | | | | | | | | |
|--------------------------------|--|-----|---------|---|-----|---------|---|-----|---------|
| | Part Number | Qty | Price | Part Number | Qty | Price | Part Number | Qty | Price |
| DIN Rail | DN-R35S1 | 10 | \$39.00 | DN-R35HS1 | 10 | \$68.00 | DN-R15S1 | 10 | \$36.00 |
| | DN-R35S1-2 | 2 | \$11.00 | DN-R35HS1-2 | 2 | \$16.50 | DN-R15S1-2 | 2 | \$10.00 |
| Description | DINnector DIN rail, slotted, 35mm width, 7.5mm height, 1m length, plated steel. Package of 10. | | | DINnector DIN rail, slotted, 35mm width, 15mm height, 1m length, plated steel. Package of 10. | | | DINnector DIN rail, slotted, 15mm width, 5.5mm height, 1m length, plated steel. Package of 2. | | |
| Plating | Zinc-plated and chromated | | | | | | | | |
| International Standards | EN 60715, RoHs | | | | | | | | |
| Suggested Mounting Screw Type | M6 | | | M6 | | | M4 | | |

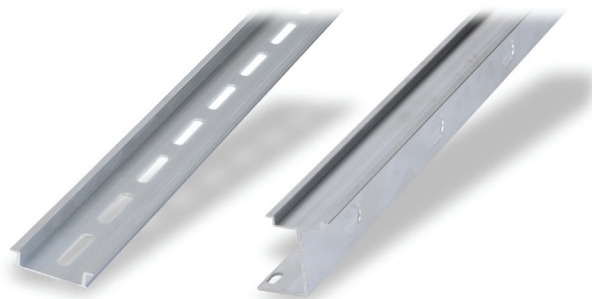
Aluminum DIN Rail Features

35mm wide

- Non-anodized finish
- Zinc plating and passivation (minimum thickness 6 microns)
- Lightweight, easy to cut and deburr
- Terminal blocks only
- Maximum mounting screw #10-32 or M5
- Available in 1-meter lengths

35mm wide raised

- Non-anodized finish
- Zinc plating and passivation (minimum thickness 6 microns)
- Enables users to raise terminal blocks 2¼" above the back panel
- Terminal blocks only
- Available in 1-meter lengths
- Bushing or grommet recommended for wire access hole (example Heyco UB-875 not sold by ADC)



| Aluminum DIN Rails Specifications | | | | | | |
|-----------------------------------|---|-----|---------|--|-----|---------|
| | Part Number | Qty | Price | Part Number | Qty | Price |
| DIN Rail | DN-R35SAL1 | 10 | \$60.00 | DN-R35SAL2-2 | 2 | \$38.00 |
| | DN-R35SAL1-2 | 2 | \$16.00 | | | |
| Description | DINnector DIN rail, slotted, 35mm width, 10mm height, 1m length, aluminum. Package of 10. | | | DINnector DIN rail, slotted, 2in raised 35mm width, 7.5mm height, 1m length, aluminum. Package of 2. | | |
| Plating | Galvanic zinc plating, non-anodized finish | | | | | |
| International Standards | DIN 50960, RoHs | | | | | |
| Suggested Mounting Screw Type | #10-32 or M5 | | | | | |

DINnectors Accessories

DIN rail support brackets

- Angled support brackets raise and tilt mounting rails 30 degrees from mounting surface for easier wiring
- [DN-ASB1](#) plated steel support bracket
- [DN-ASB2-10](#) cold-rolled steel treated with galvanic zinc plating and passivation

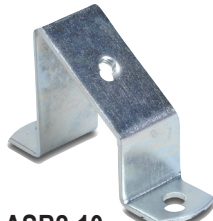
DIN rail mounting clips

- Snap small devices not made for mounting onto 35mm DIN rails
- Zinc plated steel

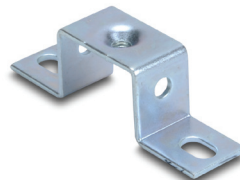
| DIN Rail Support Brackets and Mounting Clips | | | |
|--|--|-----|----------|
| Part Number | Description | Qty | Price |
| DN-ASB1 | 30° angled DIN rail support bracket (M6-1.0 screws not included) | 50 | \$107.00 |
| DN-ASB2-10 | 30° angled DIN rail support bracket (M6-1.0 screws included) | 10 | \$18.00 |
| DN-SSB25-10 | 1" (25mm) DIN rail support bracket (M6-1.0 screws included) | 10 | \$24.50 |
| DN-SSB50-10 | 2" (50mm) DIN rail support bracket (M6-1.0 screws included) | 10 | \$25.50 |
| DN-SSB70-10 | 2.75" (70mm) DIN rail support bracket (M6-1.0 screws included) | 10 | \$32.00 |
| DN-SSB90-10 | 3.5" (90mm) DIN rail support bracket (M6-1.0 screws included) | 10 | \$34.50 |
| DN-CLIP-FM4 | DIN rail mounting clip with M4 x 0.7 mm threaded hole (Screws not included) | 40 | \$66.00 |
| DN-CLIP-FM4-5 | | 5 | \$9.50 |
| DN-CLIP-FM5 | DIN rail mounting clip with M5 x 0.8 mm threaded hole (Screws not included) | 40 | \$66.00 |
| DN-CLIP-FM5-5 | | 5 | \$9.50 |



[DN-ASB1](#)



[DN-ASB2-10](#)



[DN-SSB25-10](#)



[DN-SSB50-10](#)



[DN-SSB70-10](#)



[DN-SSB90-10](#)



[DN-CLIP-FM4](#)
[DN-CLIP-FM4-5](#)



[DN-CLIP-FM5](#)
[DN-CLIP-FM5-5](#)