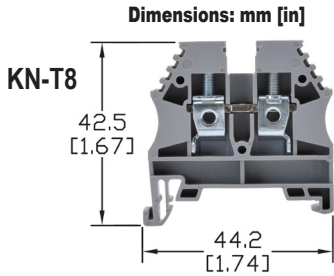




# Single-Level Terminal Blocks

- Screw connection terminal
- UL E179129 (For copper wire only. One conductor in terminal only.)
- VDE (IEC 60947-7-1)
- CE (EN 60947-7-1)



See our website: [www.AutomationDirect.com](http://www.AutomationDirect.com) for complete engineering drawings

<sup>1</sup>UL Usage Group: B, C for 300V or D for 600V

Ordering Information									
Colors	Part Number	Qty	Price	Part Number	Qty	Price	Part Number	Qty	Price
Gray	<a href="#">KN-T12GRY-100</a>	100	\$34.50	<a href="#">KN-T10GRY-80</a>	80	\$30.00	<a href="#">KN-T8GRY-60</a>	60	\$47.00
	<a href="#">KN-T12GRY-25</a>	25	\$9.00	<a href="#">KN-T10GRY-20</a>	20	\$7.75	<a href="#">KN-T8GRY-20</a>	20	\$16.00
Blue	<a href="#">KN-T12BLU-100</a>	100	\$34.50	<a href="#">KN-T10BLU-80</a>	80	\$30.00	<a href="#">KN-T8BLU-60</a>	60	\$47.00
	<a href="#">KN-T12BLU-25</a>	25	\$9.00	<a href="#">KN-T10BLU-20</a>	20	\$7.75	<a href="#">KN-T8BLU-20</a>	20	\$16.00
Brown	<a href="#">KN-T12BRN-100</a>	100	\$34.50	<a href="#">KN-T10BRN-80</a>	80	\$30.00	<a href="#">KN-T8BRN-60</a>	60	\$47.00
	<a href="#">KN-T12BRN-25</a>	25	\$9.00	<a href="#">KN-T10BRN-20</a>	20	\$7.75	<a href="#">KN-T8BRN-20</a>	20	\$16.00
Black	<a href="#">KN-T12BLK-100</a>	100	\$34.50	<a href="#">KN-T10BLK-80</a>	80	\$30.00	<a href="#">KN-T8BLK-60</a>	60	\$47.00
	<a href="#">KN-T12BLK-25</a>	25	\$9.00	<a href="#">KN-T10BLK-20</a>	20	\$7.75	<a href="#">KN-T8BLK-20</a>	20	\$16.00
Green	<a href="#">KN-T12GRN-100</a>	100	\$34.50	<a href="#">KN-T10GRN-80</a>	80	\$30.00	<a href="#">KN-T8GRN-60</a>	60	\$47.00
	<a href="#">KN-T12GRN-25</a>	25	\$9.00	<a href="#">KN-T10GRN-20</a>	20	\$7.75	<a href="#">KN-T8GRN-20</a>	20	\$16.00
Orange	<a href="#">KN-T12ORG-100</a>	100	\$34.50	<a href="#">KN-T10ORG-80</a>	80	\$30.00	<a href="#">KN-T8ORG-60</a>	60	\$47.00
	<a href="#">KN-T12ORG-25</a>	25	\$9.00	<a href="#">KN-T10ORG-20</a>	20	\$7.75	<a href="#">KN-T8ORG-20</a>	20	\$16.00
Red	<a href="#">KN-T12RED-100</a>	100	\$34.50	<a href="#">KN-T10RED-80</a>	80	\$30.00	<a href="#">KN-T8RED-60</a>	60	\$47.00
	<a href="#">KN-T12RED-25</a>	25	\$9.00	<a href="#">KN-T10RED-20</a>	20	\$7.75	<a href="#">KN-T8RED-20</a>	20	\$16.00
Yellow	<a href="#">KN-T12YEL-100</a>	100	\$34.50	<a href="#">KN-T10YEL-80</a>	80	\$30.00	<a href="#">KN-T8YEL-60</a>	60	\$47.00
	<a href="#">KN-T12YEL-25</a>	25	\$9.00	<a href="#">KN-T10YEL-20</a>	20	\$7.75	<a href="#">KN-T8YEL-20</a>	20	\$16.00
White	<a href="#">KN-T12WHT-100</a>	100	\$34.50	<a href="#">KN-T10WHT-80</a>	80	\$30.00	<a href="#">KN-T8WHT-60</a>	60	\$47.00
	<a href="#">KN-T12WHT-25</a>	25	\$9.00	<a href="#">KN-T10WHT-20</a>	20	\$7.75	<a href="#">KN-T8WHT-20</a>	20	\$16.00

Technical Specifications									
Model	KN-T12			KN-T10			KN-T8		
Width	5mm [0.20 in]			6mm [0.24 in]			8mm [0.31 in]		
Stripping Length	10mm [0.39 in]			10mm [0.39 in]			12mm [0.47 in]		
Tightening Torque	0.4 N·m [3.5 lb·in]			0.5 N·m [4.4 lb·in]			0.8 N·m [7.1 lb·in]		
Density	200/m [60 pcs/ft]			166/m [50 pcs/ft]			125/m [38 pcs/ft]		
UL/CSA Approval	600V	20A	26-12 AWG	300V	30A	26-10 AWG	300V	50A	26-8 AWG
VDE Approval	750V	24A	2.5 mm <sup>2</sup>	750V	32A	4mm <sup>2</sup>	630V	41A	6mm <sup>2</sup>
CE Conformity	750V	24A	2.5 mm <sup>2</sup>	750V	32A	4mm <sup>2</sup>	630V	41A	6mm <sup>2</sup>
SCCR Rating	100kA			100kA			100kA		
Operating Temperature	Ambient air temperature: -67 to 185°F [-55 to 85°C], Relative humidity: 50% max at 104°F [40°C] and 90% max at 68°F [20°C]								
Material	Current Bar: Copper Alloy / Housing: Polyamide 66 / Screw: Zinc Plated Steel								
DIN Rail Width	35mm								

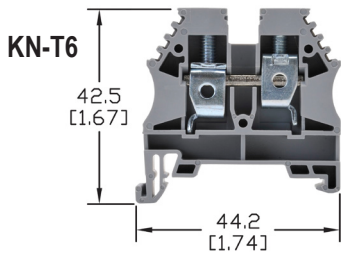
Accessories										
End Covers (International colors)	Gray	<a href="#">KN-ECT6GRY</a>	100/pkg	\$26.50	<a href="#">KN-ECT6GRY</a>	100/pkg	\$26.50	<a href="#">KN-ECT6GRY</a>	100/pkg	\$26.50
		<a href="#">KN-ECT6GRY-25</a>	25/pkg	\$6.00	<a href="#">KN-ECT6GRY-25</a>	25/pkg	\$6.00	<a href="#">KN-ECT6GRY-25</a>	25/pkg	\$6.00
	Blue	<a href="#">KN-ECT6BLU</a>	10/pkg	\$3.00	<a href="#">KN-ECT6BLU</a>	10/pkg	\$3.00	<a href="#">KN-ECT6BLU</a>	10/pkg	\$3.00
		<a href="#">KN-ECT6BRN</a>		\$3.00	<a href="#">KN-ECT6BRN</a>		\$3.00	<a href="#">KN-ECT6BRN</a>		\$3.00
		<a href="#">KN-ECT6BLK</a>		\$3.00	<a href="#">KN-ECT6BLK</a>		\$3.00	<a href="#">KN-ECT6BLK</a>		\$3.00
		<a href="#">KN-ECT6GRN</a>		\$3.00	<a href="#">KN-ECT6GRN</a>		\$3.00	<a href="#">KN-ECT6GRN</a>		\$3.00
		<a href="#">KN-ECT6ORG</a>		\$3.00	<a href="#">KN-ECT6ORG</a>		\$3.00	<a href="#">KN-ECT6ORG</a>		\$3.00
		<a href="#">KN-ECT6RED</a>		\$3.00	<a href="#">KN-ECT6RED</a>		\$3.00	<a href="#">KN-ECT6RED</a>		\$3.00
		<a href="#">KN-ECT6YEL</a>		\$3.00	<a href="#">KN-ECT6YEL</a>		\$3.00	<a href="#">KN-ECT6YEL</a>		\$3.00
<a href="#">KN-ECT6WHT</a>		\$3.00		<a href="#">KN-ECT6WHT</a>	\$3.00		<a href="#">KN-ECT6WHT</a>	\$3.00		
Separators (International colors)	Gray	<a href="#">KN-ST1GRY</a>	25/pkg	\$12.50	<a href="#">KN-ST1GRY</a>	25/pkg	\$12.50	<a href="#">KN-ST1GRY</a>	25/pkg	\$12.50
	Blue	<a href="#">KN-ST1BLU</a>	10/pkg	\$4.75	<a href="#">KN-ST1BLU</a>	10/pkg	\$4.75	<a href="#">KN-ST1BLU</a>	10/pkg	\$4.75
	Brown	<a href="#">KN-ST1BRN</a>		\$4.75	<a href="#">KN-ST1BRN</a>		\$4.75	<a href="#">KN-ST1BRN</a>		\$4.75
	Black	<a href="#">KN-ST1BLK</a>		\$4.75	<a href="#">KN-ST1BLK</a>		\$4.75	<a href="#">KN-ST1BLK</a>		\$4.75
	Green	<a href="#">KN-ST1GRN</a>		\$4.75	<a href="#">KN-ST1GRN</a>		\$4.75	<a href="#">KN-ST1GRN</a>		\$4.75
	Orange	<a href="#">KN-ST1ORG</a>		\$4.75	<a href="#">KN-ST1ORG</a>		\$4.75	<a href="#">KN-ST1ORG</a>		\$4.75
	Red	<a href="#">KN-ST1RED</a>		\$4.75	<a href="#">KN-ST1RED</a>		\$4.75	<a href="#">KN-ST1RED</a>		\$4.75
	Yellow	<a href="#">KN-ST1YEL</a>		\$4.75	<a href="#">KN-ST1YEL</a>		\$4.75	<a href="#">KN-ST1YEL</a>		\$4.75
White	<a href="#">KN-ST1WHT</a>	\$4.75		<a href="#">KN-ST1WHT</a>	\$4.75		<a href="#">KN-ST1WHT</a>	\$4.75		
Jumpers	2-pole	<a href="#">KN-2J12</a>	25/pkg	\$12.00	<a href="#">KN-2J10</a>	25/pkg	\$17.00	<a href="#">KN-2J8</a>	25/pkg	\$18.00
	3-pole	<a href="#">KN-3J12</a>	20/pkg	\$14.50	<a href="#">KN-3J10</a>	20/pkg	\$20.50	<a href="#">KN-3J8</a>	20/pkg	\$22.00
	4-pole	<a href="#">KN-4J12</a>	15/pkg	\$18.00	<a href="#">KN-4J10</a>	15/pkg	\$20.50	<a href="#">KN-4J8</a>	15/pkg	\$21.50
	10-pole	<a href="#">KN-10J12</a>	5/pkg	\$12.00	<a href="#">KN-10J10</a>	5/pkg	\$14.50	<a href="#">KN-10J8</a>	5/pkg	\$17.00
Comb-type jumper / 2-pole	<a href="#">KN-2JCC12</a>	25/pkg	\$15.50	<a href="#">KN-2JCC10</a>	25/pkg	\$31.00	<a href="#">KN-2JCC8</a>	25/pkg	\$32.50	
Top Cover / Blank	<a href="#">KN-TC-1</a>	25/pkg	\$9.75	<a href="#">KN-TC-1</a>	25/pkg	\$9.75	<a href="#">KN-TC-1</a>	25/pkg	\$9.75	
Top Cover / Symbol	<a href="#">KN-TC-1S</a>	25/pkg	\$14.00	<a href="#">KN-TC-1S</a>	25/pkg	\$14.00	<a href="#">KN-TC-1S</a>	25/pkg	\$14.00	
Marking Tags	KN-L5 Series			KN-L5 Series			KN-L5 / KN-L6P5 Series			



# Single-Level Terminal Blocks

- Screw connection terminal
- UL E179129  
(For copper wire only. One conductor in terminal only.)
- VDE (IEC 60947-7-1)
- CE (EN 60947-7-1)

Dimensions: mm [in]



See our website: [www.AutomationDirect.com](http://www.AutomationDirect.com) for complete engineering drawings

<sup>1</sup>UL Usage Group: B, C for 300V or D for 600V

## Ordering Information

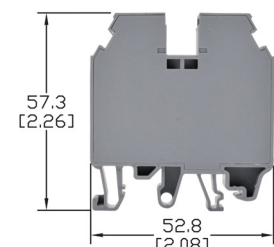
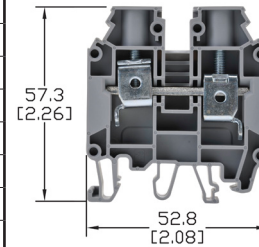
Colors	Part Number	Qty	Price	Part Number	Qty	Price	Part Number	Qty	Price
Gray	<a href="#">KN-T6GRY-50</a>	50	\$52.00	<a href="#">KN-T4GRY</a>	50	\$87.00	<a href="#">KN-T2GRY</a>	40	\$109.00
	<a href="#">KN-T6GRY-25</a>	25	\$26.50	<a href="#">KN-T4GRY-25</a>	25	\$54.00	<a href="#">KN-T2GRY-10</a>	10	\$28.00
Blue	<a href="#">KN-T6BLU-50</a>	50	\$52.00	<a href="#">KN-T4BLU</a>	50	\$87.00	<a href="#">KN-T2BLU</a>	40	\$109.00
	<a href="#">KN-T6BLU-25</a>	25	\$26.50	<a href="#">KN-T4BLU-25</a>	25	\$54.00	<a href="#">KN-T2BLU-10</a>	10	\$28.00
Brown	<a href="#">KN-T6BRN-50</a>	50	\$52.00						
	<a href="#">KN-T6BRN-25</a>	25	\$26.50						
Black	<a href="#">KN-T6BLK-50</a>	50	\$52.00						
	<a href="#">KN-T6BLK-25</a>	25	\$26.50						
Green	<a href="#">KN-T6GRN-50</a>	50	\$52.00						
	<a href="#">KN-T6GRN-25</a>	25	\$26.50						
Orange	<a href="#">KN-T6ORG-50</a>	50	\$52.00						
	<a href="#">KN-T6ORG-25</a>	25	\$26.50						
Red	<a href="#">KN-T6RED-50</a>	50	\$52.00						
	<a href="#">KN-T6RED-25</a>	25	\$26.50						
Yellow	<a href="#">KN-T6YEL-50</a>	50	\$52.00						
	<a href="#">KN-T6YEL-25</a>	25	\$26.50						
White	<a href="#">KN-T6WHT-50</a>	50	\$52.00						
	<a href="#">KN-T6WHT-25</a>	25	\$26.50						



Dimensions: mm [in]

KN-T4

KN-T2



## Technical Specifications

Model	KN-T6			KN-T4			KN-T2		
Width	10mm [0.39 in]			12mm [0.47 in]			16mm [0.63 in]		
Stripping Length	12mm [0.47 in]			16mm [0.63 in]			18mm [0.71 in]		
Tightening Torque	1.2 N·m [10.6 lb·in]			1.2 N·m [10.6 lb·in]			2.5 N·m [22.1 lb·in]		
Density	100/m [33 pcs/ft]			83/m [25 pcs/ft]			62/m [19 pcs/ft]		
UL/CSA Approval	300V	65A	16-6 AWG	600V	80A	12-4 AWG	600V	115A	10-2 AWG
VDE Approval	630V	57A	10mm <sup>2</sup>	750V	76A	16mm <sup>2</sup>	750V	125A	35mm <sup>2</sup>
CE Conformity	630V	57A	10mm <sup>2</sup>	750V	76A	16mm <sup>2</sup>	750V	125A	35mm <sup>2</sup>
SCCR Rating	100kA			100kA			100kA		
Operating Temperature	Ambient air temperature: -67 to 185°F [-55 to 85°C], Relative humidity: 50% max at 104°F [40°C] and 90% max at 68°F [20°C]								
Material	Current Bar: Copper Alloy / Housing: Polyamide 66 / Screws: Zinc Plated Steel								
DIN Rail Width	35mm								

## Accessories

End Covers (International colors)	Gray	<a href="#">KN-ECT6GRY</a>	100/pkg	\$26.50	<a href="#">KN-ECT4GRY</a>	25/pkg	\$12.50	Note: KN-T2 is totally enclosed, no end cover required			
		<a href="#">KN-ECT6GRY-25</a>	25/pkg	\$6.00	—	—	—				
	Blue	<a href="#">KN-ECT6BLU</a>	10/pkg	\$3.00	<a href="#">KN-ECT4BLU</a>	10/pkg	\$5.25				
	Brown	<a href="#">KN-ECT6BRN</a>		—	—	—					
	Black	<a href="#">KN-ECT6BLK</a>		—	—	—					
	Green	<a href="#">KN-ECT6GRN</a>		—	—	—					
	Orange	<a href="#">KN-ECT6ORG</a>		—	—	—					
	Red	<a href="#">KN-ECT6RED</a>		—	—	—					
	Yellow	<a href="#">KN-ECT6YEL</a>		—	—	—					
	White	<a href="#">KN-ECT6WHT</a>		—	—	—					
Separators (International colors)	Gray	<a href="#">KN-ST1GRY</a>		25/pkg	\$12.50	<a href="#">KN-ST2GRY</a>	25/pkg	\$16.00	<a href="#">KN-ST3GRY</a>	10/pkg	\$8.00
	Blue	<a href="#">KN-ST1BLU</a>		10/pkg	\$4.75	<a href="#">KN-ST2BLU</a>	10/pkg	\$16.00	<a href="#">KN-ST3BLU</a>	10/pkg	\$8.00
	Brown	<a href="#">KN-ST1BRN</a>	—		—	—	—				
	Black	<a href="#">KN-ST1BLK</a>	—		—	—	—				
	Green	<a href="#">KN-ST1GRN</a>	—		—	—	—				
	Orange	<a href="#">KN-ST1ORG</a>	—		—	—	—				
	Red	<a href="#">KN-ST1RED</a>	—		—	—	—				
	Yellow	<a href="#">KN-ST1YEL</a>	—		—	—	—				
	White	<a href="#">KN-ST1WHT</a>	—		—	—	—				
Jumpers	2-pole	<a href="#">KN-2J6</a>	25/pkg		\$22.50	<a href="#">KN-2J4</a>	25/pkg	\$35.50	<a href="#">KN-2J2</a>	25/pkg	\$36.00
	3-pole	<a href="#">KN-3J6</a>	20/pkg	\$23.50	<a href="#">KN-3J4</a>	20/pkg	\$37.00	<a href="#">KN-3J2</a>	20/pkg	\$39.00	
	4-pole	<a href="#">KN-4J6</a>	15/pkg	\$23.50	<a href="#">KN-4J4</a>	15/pkg	\$37.00	<a href="#">KN-4J2</a>	15/pkg	\$39.00	
	10-pole	<a href="#">KN-10J6</a>	5/pkg	\$18.50	<a href="#">KN-10J4</a>	5/pkg	\$29.50	<a href="#">KN-10J2</a>	5/pkg	\$29.50	
	Comb-type jumper / 2-pole	<a href="#">KN-2JCC6</a>	25/pkg	\$36.00	—	—	—	—	—	—	
Top Cover / Blank	<a href="#">KN-TC-1</a>	25/pkg	\$9.75	<a href="#">KN-TC-2</a>	25/pkg	\$25.00	<a href="#">KN-TC-2</a>	25/pkg	\$25.00		
Top Cover / Symbol	<a href="#">KN-TC-1S</a>	25/pkg	\$14.00	<a href="#">KN-TC-2S</a>	25/pkg	\$25.00	<a href="#">KN-TC-2S</a>	25/pkg	\$25.00		
Marking Tags	KN-L5/KN-L6P5 Series			KN-L5/KN-L6P5 Series			KN-L5/KN-L6P5 Series				

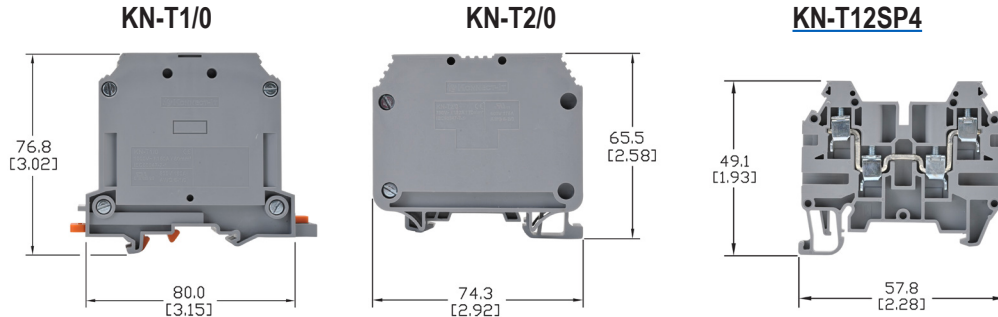


# Single-Level Terminal Blocks



Dimensions: mm [in]

- Screw connection terminal
- UL E179129 (For copper wire only. One conductor in terminal only.)
- CE (EN 60947-7-1)



See our website: [www.AutomationDirect.com](http://www.AutomationDirect.com) for complete engineering drawings

Ordering Information									
Colors	Part Number	Qty	Price	Part Number	Qty	Price	Part Number	Qty	Price
Gray	<a href="#">KN-T1/0GRY</a>	25	\$105.00	<a href="#">KN-T2/0GRY</a>	10	\$66.00	<a href="#">KN-T12SP4</a>	100	\$192.00
	<a href="#">KN-T1/0GRY-10</a>	10	\$40.50	—	—	—	<a href="#">KN-T12SP4-25</a>	25	\$63.00
Blue	<a href="#">KN-T1/0BLU</a>	25	\$105.00	<a href="#">KN-T2/0BLU</a>	10	\$94.00	—	—	—
	<a href="#">KN-T1/0BLU-10</a>	10	\$40.50	—	—	—	—	—	—

Technical Specifications									
Model	KN-T1/0			KN-T2/0			KN-T12SP4		
Width	20mm [0.79 in]			22mm [0.87 in]			5mm [0.20 in]		
Stripping Length	20mm [0.79 in]			20mm [0.79 in]			10mm [0.39 in]		
Tightening Torque	6.0 N·m [53.1 lb-in]			6.0 N·m [53.1 lb-in]			0.5 N·m [4.4 lb-in]		
Density	50/m [15 pcs/ft]			45/m [13 pcs/ft]			200/m [60 pcs/ft]		
UL/CSA Approval	600V	150A	6-1/0 AWG	600V	175A	6-2/0 AWG	600V	20A	26-12 AWG
CE Conformity	1000V	150A	50mm <sup>2</sup>	750V	192A	70mm <sup>2</sup>	750V	24A	2.5 mm <sup>2</sup>
SCCR Rating	100kA			100kA			100kA per Table SB4.1, 2009, UL 508A.		
Operating Temperature	Ambient air temperature: -67 to 185°F [-55 to 85°C], Relative humidity: 50% max at 104°F [40°C] and 90% max at 68°F [20°C]								
Material	Current Bar: Copper Alloy / Housing: Polyamide 66 / Screws: Zinc Plated Steel								
DIN Rail Width	35mm								

Accessories										
End Covers	Gray	—	—	—	—	—	—	<a href="#">KN-ECT12SP4</a>	25/pkg	\$12.00
Jumpers	2-pole	<a href="#">KN-2J1/0</a>	5/pkg	\$11.00	—	—	—	<a href="#">KN-2JM12</a>	25/pkg	\$10.50
	3-pole	<a href="#">KN-3J1/0</a>	5/pkg	\$18.50	—	—	—	<a href="#">KN-3JM12</a>	20/pkg	\$12.00
	4-pole	<a href="#">KN-4J1/0</a>	5/pkg	\$23.50	—	—	—	<a href="#">KN-4JM12</a>	15/pkg	\$12.00
	10-pole	—	—	—	—	—	—	<a href="#">KN-10JM12</a>	5/pkg	\$13.50
Marking Tags	No tags available				KN-L5 Series KN-L6P5 Series			KN-L5 Series		



# 100kA Terminal Block Short-Circuit Current Rating Data

Short-Circuit Current Rating Data										
Part Number	Suitable Copper Conductor Range (AWG)		Fuse Class Maximum Amperage						SCCR Rating	Volts Max
	Line	Load	Class J	Class T	Class RK1	Class RK5	Class G	Class CC		
KN-T12 <sup>2</sup>	26-12	26-12	20	20	—	—	20	20	100 kA	600
KN-T10 <sup>2</sup>	26-10	26-10	30	30	—	—	30	30	100 kA	600
KN-T8 <sup>2</sup>	26-8	26-8	50	50	30	—	45	30	100 kA	600
KN-T6 <sup>2</sup>	16-6	16-6	80	80	60	30	60	30	100 kA	600
KN-T4 <sup>2</sup>	12-4	12-4	80	80	60	30	60	30	100 kA	600
KN-T2 <sup>2</sup>	12-2	12-2	125	125	100	30	60	30	100 kA	600
KN-T1/0 <sup>3</sup>	6-1/0	6-1/0	150	150	100	30	60	30	100 kA	600
KN-T2/0 <sup>3</sup>	6-2/0	6-2/0	225	225	100	60	60	30	100 kA	600
KN-D12 <sup>1 2</sup>	26-12	26-12	20	20	—	—	20	20	100 kA	600
KN-D10 <sup>1 2</sup>	26-10	26-10	30	30	—	—	30	30	100 kA	600
KN-TL14 <sup>2</sup>	24-12	24-12	30	30	—	—	30	30	100 kA	600
KN-TG12 <sup>2</sup>	24-12	24-12	30	30	—	—	30	30	100 kA	600
KN-M12 <sup>2</sup>	26-12	26-12	30	30	—	—	30	30	100 kA	600
KN-M10 <sup>2</sup>	14-12	14-12	30	30	—	—	30	30	100 kA	600

Note: <sup>1</sup> KN-D12 and KN-D10 have optional short circuit rating evaluated for use with copper conductors only. Must be protected by the max ampere and Class of overcurrent protective device noted above.

<sup>2</sup> The terminal block short-circuit rating for KN-D12 and KN-D10 were determined based on testing in a minimum size enclosure measuring 4x4x6 inches. The suitability of smaller enclosures shall be determined in the end-use investigation.

<sup>3</sup> The terminal block short-circuit rating for KN-T1/0 and KN-T2/0 were determined based on testing in a minimum size enclosure measuring 12x12x6 inches. The suitability of smaller enclosures shall be determined in the end-use investigation.



# KONNECT-IT Accessories

## Multi-Pole Jumper Bars

Multi-pole jumper bars provide terminal block connection flexibility. Screw-down connection jumpers feature all-metal construction and can be installed quickly just by tightening the screws. Screwless comb-style jumpers are also available. See next page for the larger J1/0 jumper installation instructions.

**KN-10J12**



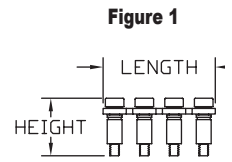
**KN-2JM12**



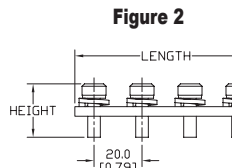
**KN-2JCC8**



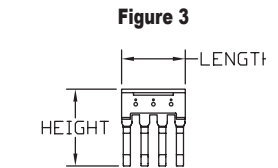
Multi-Pole Jumper Bars Ordering Information												
Type	Part Number	Price	Qty	Number of Poles	Rating		Tightening Torque	Dimensions - mm [in]			Fig.	Works With
					(V)	(A)		Height	Length	Width		
Screw-down connection	<a href="#">KN-2J12</a>	\$12.00	25	2	750	24	0.4–0.6 Nm [3.5–5.3 lb-in]	15.8 [0.62]	10.1 [0.40]	4.4 [0.17]	1	KN-T12xx KN-D12xx KN-D12X KN-D12DR1 KN-D12LEDxx
	<a href="#">KN-3J12</a>	\$14.50	20	3	750	24			15.3 [0.60]			
	<a href="#">KN-4J12</a>	\$18.00	15	4	750	24			20.4 [0.80]			
	<a href="#">KN-10J12</a>	\$12.00	5	10	750	24			51.1 [2.01]			
	<a href="#">KN-2J10</a>	\$17.00	25	2	750	32	0.6–0.8 Nm [5.3–7.1 lb-In]	15.5 [0.61]	10.8 [0.43]	6.0 [0.24]	1	KN-T10xx KN-D10xx KN-D10X KN-D10DR1 KN-D10LEDxx
	<a href="#">KN-3J10</a>	\$20.50	20	3	750	32			17.0 [0.67]			
	<a href="#">KN-4J10</a>	\$20.50	15	4	750	32			23.0 [0.91]			
	<a href="#">KN-10J10</a>	\$14.50	5	10	750	32			59.0 [2.32]			
	<a href="#">KN-2J8</a>	\$18.00	25	2	630	41	0.6–0.8 Nm [5.3–7.1 lb-In]	15.5 [0.61]	14.3 [0.56]	6.0 [0.24]	1	KN-T8xx
	<a href="#">KN-3J8</a>	\$22.00	20	3	630	41			22.3 [0.88]			
	<a href="#">KN-4J8</a>	\$21.50	15	4	630	41			30.3 [1.19]			
	<a href="#">KN-10J8</a>	\$17.00	5	10	630	41			78.3 [3.08]			
	<a href="#">KN-2J6</a>	\$22.50	25	2	630	57	0.6–0.8 Nm [5.3–7.1 lb-In]	15.5 [0.61]	18.0 [0.71]	6.0 [0.24]	1	KN-T6xx
	<a href="#">KN-3J6</a>	\$23.50	20	3	630	57			28.0 [1.10]			
	<a href="#">KN-4J6</a>	\$23.50	15	4	630	57			38.0 [1.50]			
	<a href="#">KN-10J6</a>	\$18.50	5	10	630	57			98.0 [3.86]			
	<a href="#">KN-2J4</a>	\$35.50	25	2	750	76	0.6–0.8 Nm [5.3–7.1 lb-In]	23.0 [0.91]	21.0 [0.83]	6.0 [0.24]	1	KN-T4xx
	<a href="#">KN-3J4</a>	\$37.00	20	3	750	76			33.0 [1.30]			
	<a href="#">KN-4J4</a>	\$37.00	15	4	750	76			45.0 [1.77]			
	<a href="#">KN-10J4</a>	\$29.50	5	10	750	76			117.0 [4.61]			
<a href="#">KN-2J2</a>	\$36.00	25	2	750	125	1.2–1.4 Nm [10.6–12.4 lb-In]	21.0 [0.83]	29.0 [1.14]	8.0 [0.31]	1	KN-T2xx	
<a href="#">KN-3J2</a>	\$39.00	20	3	750	125			45.0 [1.77]				
<a href="#">KN-4J2</a>	\$39.00	15	4	750	125			61.0 [2.40]				
<a href="#">KN-10J2</a>	\$29.50	5	10	750	125			157.0 [6.18]				
<a href="#">KN-2J1/0</a>	\$11.00	5	2	1000	150	2.5–3.5 Nm [22.1–31.0 lb-In]	22.3 [0.88]	36.0 [1.42]	12.0 [0.47]	2	KN-T1/0xx	
<a href="#">KN-3J1/0</a>	\$18.50	5	3	1000	150			56.0 [2.20]				
<a href="#">KN-4J1/0</a>	\$23.50	5	4	1000	150			76.0 [2.99]				
<a href="#">KN-2JTL12</a>	\$18.50	25	2	440	24	0.4–0.6 Nm [3.5–5.3 lb-In]	15.5 [0.61]	11.0 [0.43]	4.4 [0.17]	1	KN-DG12 KN-TG12 KN-TL14 KN-TL14S KN-TL14SLN KN-TL14SLP	
<a href="#">KN-3JTL12</a>	\$23.00	20	3	440	24			17.0 [0.67]				
<a href="#">KN-4JTL12</a>	\$21.50	15	4	440	24			23.0 [0.91]				
<a href="#">KN-10JTL12</a>	\$18.50	5	10	440	24			59.0 [2.32]				
Push-in Connection	<a href="#">KN-2JM10</a>	\$11.00	25	2	750	32	-	23.2 [0.91]	9.5 [0.37]	2.7 [0.11]	3	KN-M10xx KN-KBD10
	<a href="#">KN-3JM10</a>	\$13.50	20	3	750	32			15.5 [0.61]			
	<a href="#">KN-4JM10</a>	\$15.50	15	4	750	32			21.5 [0.85]			
	<a href="#">KN-10JM10</a>	\$14.50	5	10	750	32	57.5 [2.26]					
	<a href="#">KN-2JM12</a>	\$10.50	25	2	750	24	-	21.7 [0.85]	8.0 [0.31]	2.3 [0.09]	3	KN-M12xx KN-T12SP4
	<a href="#">KN-3JM12</a>	\$12.00	20	3	750	24			13.0 [0.51]			
	<a href="#">KN-4JM12</a>	\$12.00	15	4	750	24			18.0 [0.71]			
<a href="#">KN-10JM12</a>	\$13.50	5	10	750	24	48.0 [1.89]						
Screwless Comb-style	<a href="#">KN-2JCC12</a>	\$15.50	25	2	750	24	-	23.7 [0.93]	8.0 [0.31]	2.8 [0.11]	4	KN-T12xx
	<a href="#">KN-2JCC10</a>	\$31.00	25		750	32	-	24.7 [0.97]	9.5 [0.37]			KN-T10xx
	<a href="#">KN-2JCC8</a>	\$32.50	25		630	41	-	25.6 [1.01]	13.5 [0.53]			KN-T8xx
	<a href="#">KN-2JCC6</a>	\$36.00	25		630	57	-	26.7 [1.05]	16.0 [0.63]			3.9 [0.15]



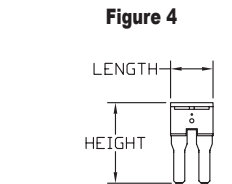
**Figure 1**



**Figure 2**



**Figure 3**



**Figure 4**

Please visit our website [www.AutomationDirect.com](http://www.AutomationDirect.com) for complete engineering drawings.

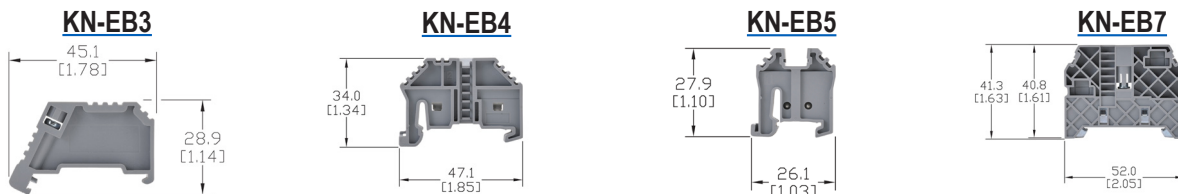


# KONNECT-IT Accessories

## End Brackets

End brackets prevent terminal blocks and other DIN rail mount components and devices from moving laterally on the rail. They are constructed from polyamide 66 and available in configurations for 35mm and 15mm DIN rails.

Dimensions mm [in]

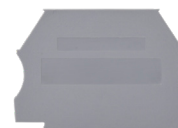


End Brackets Ordering Information												
Gray End Brackets	<b>KN-EB3</b>	100/pkg	\$48.00	<b>KN-EB4</b>	100/pkg	\$50.00	<b>KN-EB5</b>	100/pkg	\$73.00	<b>KN-EB7</b>	50/pkg	\$50.00
	<b>KN-EB3-10</b>	10/pkg	\$6.00	<b>KN-EB4-10</b>	10/pkg	\$4.75	<b>KN-EB5-10</b>	10/pkg	\$8.50	<b>KN-EB7-10</b>	10/pkg	\$9.75
Technical Specifications												
<b>Description</b>	Screw-type end bracket			Screwless end bracket			Screwless end bracket			Screw-type end bracket		
<b>Bracket Width</b>	8 mm [0.31 in]			8 mm [0.31 in]			8 mm [0.31 in]			10 mm [0.39 in]		
<b>DIN Rail Width</b>	35 mm			35 mm			15 mm			35 mm		
<b>Material</b>	Housing: Polyamide 66 / Clamping Connector: Zinc Plated Steel											
End Bracket Accessories												
<b>Label Holder</b>	—	—	—	<b>KN-MA-1</b>	25/pkg	\$21.50	—	—	—	<b>KN-MA-2</b>	50/pkg	\$54.00
	—	—	—	<b>KN-MA-1-10</b>	10/pkg	\$9.75	—	—	—	<b>KN-MA-2-10</b>	10/pkg	\$12.50
<b>Marking Tags</b>	KN-L5 Series or KN-L6P5 Series											

## End Covers

End covers are used to cover the open side of sectional DIN rail mount terminal blocks. They should be used at the end of an assembly of identical terminal blocks or whenever there is a change in the physical size of the terminal block.

Material: Polyamide 66



End Covers Ordering Information													
Part Number	Color	Dimensions H x L x W mm [in]	Works With	Qty	Price	Part Number	Color	Dimensions H x L x W mm [in]	Works With	Qty	Price		
<b>KN-ECT6GRY</b>	gray	34.0x42.7x1.3 [1.34x1.68x0.05]	KN-T12 KN-T10 KN-T8 KN-T6	100	\$26.50	<b>KN-ECDORG</b>	orange	48.2x63.2x1.3 [1.90x2.49x0.05]	KN-D10 KN-D12	10	\$6.00		
<b>KN-ECT6GRY-25</b>	gray			<b>KN-ECDRED</b>	red	25	\$6.00						
<b>KN-ECT6BLU</b>	blue			<b>KN-ECDYEL</b>	yellow		\$3.00						
<b>KN-ECT6BLK</b>	black						\$3.00	<b>KN-ECTL</b>	gray	54.7x87.1x1.3 [2.15x3.43x0.05]	KN-TL14	10	\$3.75
<b>KN-ECT6BRN</b>	brown						\$3.00	<b>KN-ECTLS</b>	gray	54.7x72.8x1.2 [2.15x2.87x0.05]	KN-TL14S	10	\$4.75
<b>KN-ECT6GRN</b>	green						\$3.00	<b>KN-ECDG12</b>	gray	48.0x71.4x1.2 [1.89x2.81x0.05]	KN-DG12	10	\$4.75
<b>KN-ECT6ORG</b>	orange						\$3.00	<b>KN-ECTG12</b>	gray	62.5x87.5x1.2 [2.46x3.44x0.05]	KN-TG12	10	\$4.75
<b>KN-ECT6RED</b>	red						\$3.00	<b>KN-ECMGRY</b>	gray	28.1x27.0x3.0 [1.11x1.06x0.12]	KN-M12 KN-M10	100	\$55.00
<b>KN-ECT6WHT</b>	white						\$3.00	<b>KN-ECMGRY-10</b>	gray			10	\$6.00
<b>KN-ECT6YEL</b>	yellow						\$3.00	<b>KN-ECMBLU</b>	blue			10	\$6.00
<b>KN-ECT4GRY</b>	gray	45.7x52.8x1.2 [1.80x2.08x0.05]	KN-T4	25	\$12.50	<b>KN-ECMGRN</b>	green/ yellow	28.1x27.0x3.0 [1.11x1.06x0.12]	KN-MG12 KN-MG10	10	\$6.00		
<b>KN-ECT4BLU</b>	blue					10	\$5.25	<b>KN-ECG12SP4</b>	green/ yellow	39.7x57.1x1.2 [1.56x2.25x0.05]	KN-G12SP4	10	\$4.75
<b>KN-ECDGRY</b>	gray	48.2x63.2x1.3 [1.90x2.49x0.05]	KN-D10 KN-D12	25	\$13.50	<b>KN-ECT12SP4</b>	gray	39.7x57.1x1.2 [1.56x2.25x0.05]	KN-T12SP4	25	\$12.00		
<b>KN-ECDBLU</b>	blue					10	\$6.00	<b>KN-ECF10</b>	gray	27.3x59.6x1.2 [1.07x2.35x0.05]	KN-F10	25	\$14.50
<b>KN-ECDBLK</b>	black						\$6.00	<b>KN-ECKBD</b>	gray	37.1x53.5x1.2 [1.46x2.11x0.05]	KN-KDB10	10	\$6.00
<b>KN-ECDGRN</b>	green						\$6.00						



# KONNECT-IT Accessories

## Separators

Separators are used to segment banks of terminal blocks. Allows you to maintain a single row of terminal blocks, but have separate power source clusters.

Separators Ordering Information							
Part Number	Color	Works With	Dimensions - mm [in]			Qty	Price
			Height	Length	Thickness		
<a href="#">KN-ST1GRY</a>	Gray	KN-T12 KN-T10 KN-T8 KN-T6	39.0 [1.54]	42.5 [1.67]	1.2 [0.05]	25	\$12.50
<a href="#">KN-ST1BLU</a>	Blue						\$4.75
<a href="#">KN-ST1BLK</a>	Black						\$4.75
<a href="#">KN-ST1BRN</a>	Brown						\$4.75
<a href="#">KN-ST1GRN</a>	Green						\$4.75
<a href="#">KN-ST1ORG</a>	Orange						\$4.75
<a href="#">KN-ST1RED</a>	Red						\$4.75
<a href="#">KN-ST1WHT</a>	White						\$4.75
<a href="#">KN-ST1YEL</a>	Yellow						\$4.75
<a href="#">KN-ST2GRY</a>	Gray						KN-T4
<a href="#">KN-ST2BLU</a>	Blue	\$16.00					
<a href="#">KN-ST3GRY</a>	Gray	KN-T2	62.6 [2.46]	53.1 [2.09]	1.5 [0.06]	10	\$8.00
<a href="#">KN-ST3BLU</a>	Blue						\$8.00

**KN-ST1GRY**



## Top Covers and Label Holders

Top Covers and Label Holders Ordering Information							
Part Number	Description	Works With	Dimensions - mm [in]			Qty	Price
			Height	Length	Width		
<a href="#">KN-TC-1</a>	Top cover for Konnect-It terminal block, blank, white	KN-T12 KN-T10 KN-T8 KN-T6	6.8 [0.27]	29.0 [1.14]	5.8 [0.23]	25	\$9.75
<a href="#">KN-TC-1S</a>	Top cover for Konnect-It terminal block, printed electric symbol, white						\$14.00
<a href="#">KN-TC-2</a>	Top cover for Konnect-It terminal block, blank, white						KN-T4 KN-T2
<a href="#">KN-TC-2S</a>	Top cover for Konnect-It terminal block, printed electric symbol, white	\$25.00					
<a href="#">KN-MA-1</a>	Label holder for terminal block group. Label media not included. Adhesive label: Apply on top.	KN-EB4	46.2 [1.82]	46.0 [1.81]	11.4 [0.45]	25	\$21.50
<a href="#">KN-MA-1-10</a>	Max label dimensions: 7 x 44 mm (0.28 x 1.73 in).						10
<a href="#">KN-MA-2</a>	Label holder for terminal block group. Label media not included. Adhesive label: Apply on top.	KN-EB7	37.5 [1.48]	46.2 [1.82]	9.5 [0.37]	50	\$54.00
<a href="#">KN-MA-2-10</a>	Max label dimensions: 7 x 44 mm (0.28 x 1.73 in).						10
<a href="#">KN-MA-3</a>	Top mounting marking tag adapter for terminal block. Holds up to (4) L5x5 tags	KN-T4 KN-T2	9.3 [0.36]	36.0 [1.42]	9.0 [0.35]	25	\$14.00
<a href="#">KN-MA-4</a>	Top mounting marking tag adapter for terminal block. Holds up to (4) L5x5 tags	KN-T12 KN-T10 KN-T8 KN-T6	9.0 [0.35]	29.0 [1.14]	5.7 [0.22]	25	\$12.50
<a href="#">KN-MA-5</a>	Label holder for terminal block group. Label media included.	Attaches to any 35mm DIN rail	46.4 [1.83]	44.5 [1.75]	10.0 [0.39]	50	\$44.00
<a href="#">KN-MA-5-25</a>	Max label dimensions: 10 x 38mm (0.39 x 1.50 in). Thickness 0.30 mm (0.01 in)						25

**KN-MA-1**



**KN-MA-2**



**KN-MA-5**



**KN-TC-1 / KN-TC-2**



**KN-TC-1S / KN-TC-2S**



**KN-MA-3**



**KN-MA-4**





# KONNECT-IT Accessories

## Marking Tags 5 x 5mm

Use with any KONNECT-IT series terminal blocks.



5 x 5mm Marking Tags Ordering Information											
250 Pieces per Package						500 Pieces per Package					
Part Number	Imprint	Price	Part Number	Imprint	Price	Part Number	Imprint	Price	Part Number	Imprint	Price
<a href="#">KN-L5-BLANK-250</a>	Blank	\$11.50	<a href="#">KN-L5-A-250</a>	A	\$11.50	<a href="#">KN-L5-BLANK</a>	Blank	\$18.00	<a href="#">KN-L5-A</a>	A	\$22.00
<a href="#">KN-L5-0-250</a>	0	\$11.50	<a href="#">KN-L5-B-250</a>	B	\$11.50	<a href="#">KN-L5-0</a>	0	\$22.00	<a href="#">KN-L5-B</a>	B	\$22.00
<a href="#">KN-L5-1-250</a>	1	\$11.50	<a href="#">KN-L5-C-250</a>	C	\$11.50	<a href="#">KN-L5-1</a>	1	\$22.00	<a href="#">KN-L5-C</a>	C	\$22.00
<a href="#">KN-L5-2-250</a>	2	\$11.50	<a href="#">KN-L5-D-250</a>	D	\$11.50	<a href="#">KN-L5-2</a>	2	\$22.00	<a href="#">KN-L5-D</a>	D	\$22.00
<a href="#">KN-L5-3-250</a>	3	\$11.50	<a href="#">KN-L5-E-250</a>	E	\$11.50	<a href="#">KN-L5-3</a>	3	\$22.00	<a href="#">KN-L5-E</a>	E	\$22.00
<a href="#">KN-L5-4-250</a>	4	\$11.50	<a href="#">KN-L5-F-250</a>	F	\$11.50	<a href="#">KN-L5-4</a>	4	\$22.00	<a href="#">KN-L5-F</a>	F	\$22.00
<a href="#">KN-L5-5-250</a>	5	\$11.50	<a href="#">KN-L5-G-250</a>	G	\$11.50	<a href="#">KN-L5-5</a>	5	\$22.00	<a href="#">KN-L5-G</a>	G	\$22.00
<a href="#">KN-L5-6-250</a>	6	\$11.50	<a href="#">KN-L5-H-250</a>	H	\$11.50	<a href="#">KN-L5-6</a>	6	\$22.00	<a href="#">KN-L5-H</a>	H	\$22.00
<a href="#">KN-L5-7-250</a>	7	\$11.50	<a href="#">KN-L5-I-250</a>	I	\$11.50	<a href="#">KN-L5-7</a>	7	\$22.00	<a href="#">KN-L5-I</a>	I	\$22.00
<a href="#">KN-L5-8-250</a>	8	\$11.50	<a href="#">KN-L5-J-250</a>	J	\$12.00	<a href="#">KN-L5-8</a>	8	\$22.00	<a href="#">KN-L5-J</a>	J	\$22.50
<a href="#">KN-L5-9-250</a>	9	\$11.50	<a href="#">KN-L5-K-250</a>	K	\$12.00	<a href="#">KN-L5-9</a>	9	\$22.00	<a href="#">KN-L5-K</a>	K	\$22.50
<a href="#">KN-L5-10-250</a>	10	\$11.50	<a href="#">KN-L5-L-250</a>	L	\$11.50	<a href="#">KN-L5-10</a>	10	\$22.00	<a href="#">KN-L5-L</a>	L	\$22.00
<a href="#">KN-L5-1-10-250</a>	1-10	\$11.50	<a href="#">KN-L5-M-250</a>	M	\$12.00	<a href="#">KN-L5-1-10</a>	1-10	\$22.00	<a href="#">KN-L5-M</a>	M	\$22.50
<a href="#">KN-L5-11-20-250</a>	11-20	\$11.50	<a href="#">KN-L5-N-250</a>	N	\$11.50	<a href="#">KN-L5-11-20</a>	11-20	\$22.00	<a href="#">KN-L5-N</a>	N	\$22.00
<a href="#">KN-L5-21-30-250</a>	21-30	\$11.50	<a href="#">KN-L5-O-250</a>	O	\$11.50	<a href="#">KN-L5-21-30</a>	21-30	\$22.00	<a href="#">KN-L5-O</a>	O	\$22.00
<a href="#">KN-L5-31-40-250</a>	31-40	\$11.50	<a href="#">KN-L5-P-250</a>	P	\$12.00	<a href="#">KN-L5-31-40</a>	31-40	\$22.00	<a href="#">KN-L5-P</a>	P	\$22.50
<a href="#">KN-L5-41-50-250</a>	41-50	\$11.50	<a href="#">KN-L5-Q-250</a>	Q	\$12.00	<a href="#">KN-L5-41-50</a>	41-50	\$22.00	<a href="#">KN-L5-Q</a>	Q	\$22.50
<a href="#">KN-L5-1-50-250</a>	1-50	\$11.50	<a href="#">KN-L5-R-250</a>	R	\$11.50	<a href="#">KN-L5-1-50</a>	1-50	\$22.00	<a href="#">KN-L5-R</a>	R	\$22.00
<a href="#">KN-L5-51-100-250</a>	51-100	\$11.50	<a href="#">KN-L5-S-250</a>	S	\$11.50	<a href="#">KN-L5-51-100</a>	51-100	\$22.00	<a href="#">KN-L5-S</a>	S	\$22.00
<a href="#">KN-L5-101-150-250</a>	101-150	\$11.50	<a href="#">KN-L5-T-250</a>	T	\$11.50	<a href="#">KN-L5-101-150</a>	101-150	\$22.00	<a href="#">KN-L5-T</a>	T	\$22.00
<a href="#">KN-L5-151-200-250</a>	151-200	\$11.50	<a href="#">KN-L5-U-250</a>	U	\$12.00	<a href="#">KN-L5-151-200</a>	151-200	\$22.00	<a href="#">KN-L5-U</a>	U	\$22.50
<a href="#">KN-L5-201-250-250</a>	201-250	\$11.50	<a href="#">KN-L5-V-250</a>	V	\$11.50	<a href="#">KN-L5-201-250</a>	201-250	\$22.00	<a href="#">KN-L5-V</a>	V	\$22.00
<a href="#">KN-L5-251-300-250</a>	251-300	\$11.50	<a href="#">KN-L5-W-250</a>	W	\$12.00	<a href="#">KN-L5-251-300</a>	251-300	\$22.00	<a href="#">KN-L5-W</a>	W	\$22.50
<a href="#">KN-L5-301-350-250</a>	301-350	\$11.50	<a href="#">KN-L5-X-250</a>	X	\$11.50	<a href="#">KN-L5-301-350</a>	301-350	\$22.00	<a href="#">KN-L5-X</a>	X	\$22.00
<a href="#">KN-L5-351-400-250</a>	351-400	\$11.50	<a href="#">KN-L5-Y-250</a>	Y	\$11.50	<a href="#">KN-L5-351-400</a>	351-400	\$22.00	<a href="#">KN-L5-Y</a>	Y	\$22.00
<a href="#">KN-L5-401-450-250</a>	401-450	\$11.50	<a href="#">KN-L5-Z-250</a>	Z	\$12.00	<a href="#">KN-L5-401-450</a>	401-450	\$22.00	<a href="#">KN-L5-Z</a>	Z	\$22.50
<a href="#">KN-L5-451-500-250</a>	451-500	\$11.50	<a href="#">KN-L5-POS-250</a>	+	\$11.50	<a href="#">KN-L5-451-500</a>	451-500	\$22.00	<a href="#">KN-L5-POS</a>	+	\$22.00
<a href="#">KN-L5-L1-250</a>	L1	\$11.50	<a href="#">KN-L5-NEG-250</a>	-	\$11.50	<a href="#">KN-L5-L1</a>	L1	\$22.00	<a href="#">KN-L5-NEG</a>	-	\$22.00
<a href="#">KN-L5-L2-250</a>	L2	\$11.50	<a href="#">KN-L5-GND-250</a>	GND	\$11.50	<a href="#">KN-L5-L2</a>	L2	\$22.00	<a href="#">KN-L5-GND</a>	GND	\$22.00
<a href="#">KN-L5-L3-250</a>	L3	\$11.50				<a href="#">KN-L5-L3</a>	L3	\$22.00			



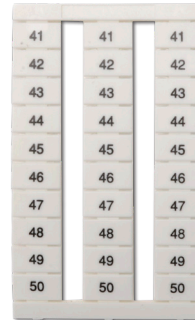


# KONNECT-IT Accessories

## Marking Tags 6.5 x 10mm

Use with any KONNECT-IT series terminal blocks 6.5mm or wider.

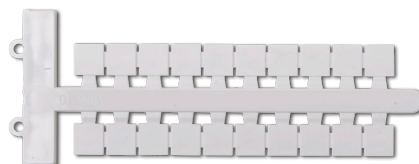
6.5 x 10mm Marking Tags Ordering Information			
Part Number	Description	Qty	Price
<a href="#"><u>KN-L6P5-BLNK-250</u></a>	Blank	250	\$30.00
<a href="#"><u>KN-L6P5-1-10-250</u></a>	Numbered 1-10	250	\$31.50
<a href="#"><u>KN-L6P5-11-20-250</u></a>	Numbered 11-20	250	\$31.50
<a href="#"><u>KN-L6P5-21-30-250</u></a>	Numbered 21-30	250	\$31.50
<a href="#"><u>KN-L6P5-31-40-250</u></a>	Numbered 31-40	250	\$31.50
<a href="#"><u>KN-L6P5-41-50-250</u></a>	Numbered 41-50	250	\$31.50
<a href="#"><u>KN-L6P5-51-60-250</u></a>	Numbered 51-60	250	\$31.50
<a href="#"><u>KN-L6P5-61-70-250</u></a>	Numbered 61-70	250	\$31.50
<a href="#"><u>KN-L6P5-71-80-250</u></a>	Numbered 71-80	250	\$31.50
<a href="#"><u>KN-L6P5-81-90-250</u></a>	Numbered 81-90	250	\$32.00
<a href="#"><u>KN-L6P5-91-100-250</u></a>	Numbered 91-100	250	\$32.00
<a href="#"><u>KN-L6P5-BLNK</u></a>	Blank	500	\$56.00
<a href="#"><u>KN-L6P5-1-10</u></a>	Numbered 1-10	500	\$57.00
<a href="#"><u>KN-L6P5-11-20</u></a>	Numbered 11-20	500	\$57.00
<a href="#"><u>KN-L6P5-21-30</u></a>	Numbered 21-30	500	\$57.00
<a href="#"><u>KN-L6P5-31-40</u></a>	Numbered 31-40	500	\$57.00
<a href="#"><u>KN-L6P5-41-50</u></a>	Numbered 41-50	500	\$57.00
<a href="#"><u>KN-L6P5-51-60</u></a>	Numbered 51-60	500	\$57.00
<a href="#"><u>KN-L6P5-61-70</u></a>	Numbered 61-70	500	\$57.00
<a href="#"><u>KN-L6P5-71-80</u></a>	Numbered 71-80	500	\$57.00
<a href="#"><u>KN-L6P5-81-90</u></a>	Numbered 81-90	500	\$58.00
<a href="#"><u>KN-L6P5-91-100</u></a>	Numbered 91-100	500	\$58.00



## Marking Tags 5 x 10mm, 6 x 10mm, 10 x 10mm

Marking Tags Ordering Information			
Part Number*	Description	Qty	Price
<a href="#"><u>KN-L5X-BLNK-220</u></a>	Blank marking tag, 5x10mm, use with any Konnect-It terminal block series	220	\$10.50
<a href="#"><u>KN-L6X-BLNK-180</u></a>	Blank marking tag, 6x10mm, use with any Konnect-It terminal block 6mm or wider	180	\$9.75
<a href="#"><u>KN-L10X-BLNK-100</u></a>	Blank marking tag, 10x10mm, use with any Konnect-It terminal block 10mm or wider	100	\$14.50
<a href="#"><u>KN-L5X-BLNK</u></a>	Blank marking tag, 5x10mm, use with any Konnect-It terminal block series	440	\$19.50
<a href="#"><u>KN-L6X-BLNK</u></a>	Blank marking tag, 6x10mm, use with any Konnect-It terminal block 6mm or wider	360	\$18.50
<a href="#"><u>KN-L10X-BLNK</u></a>	Blank marking tag, 10x10mm, use with any Konnect-It terminal block 10mm or wider	200	\$26.50

\*Does not fit any KN-T1/0xx or [KN-G1/0](#) series block



# **DINnectors** Accessories

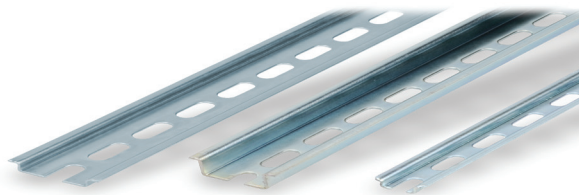
## Steel DIN Rails Features

### 35mm wide

- Available in 1-meter lengths
- 7.5 mm-high rails primarily used to mount terminal blocks, relays, timers and small PLCs such as the BRX, CLICK, DirectLogic and Productivity series. 15mm-high rails for mounting larger and heavier components such as contactors and larger PLCs

### 15mm wide

- Available in 1-meter lengths
- DN-R15S1 exclusively for mounting mini terminal blocks such as the [DN-M10-A](#)



Steel DIN Rails Specifications									
	Part Number	Qty	Price	Part Number	Qty	Price	Part Number	Qty	Price
<b>DIN Rail</b>	<a href="#">DN-R35S1</a>	10	\$39.00	<a href="#">DN-R35HS1</a>	10	\$68.00	<a href="#">DN-R15S1</a>	10	\$36.00
	<a href="#">DN-R35S1-2</a>	2	\$11.00	<a href="#">DN-R35HS1-2</a>	2	\$16.50	<a href="#">DN-R15S1-2</a>	2	\$10.00
<b>Description</b>	DINnector DIN rail, slotted, 35mm, 7.5mm height, 1m length, plated steel. Package of 10.			DINnector DIN rail, slotted, 35mm, 15mm height, 1m length, plated steel. Package of 10.			DINnector DIN rail, slotted, 15mm, 5.5mm height, 1m length, plated steel. Package of 2.		
<b>Plating</b>	Zinc-plated and chromated								
<b>International Standards</b>	EN 60715, RoHs								
<b>Suggested Mounting Screw Type</b>	M6			M6			M4		

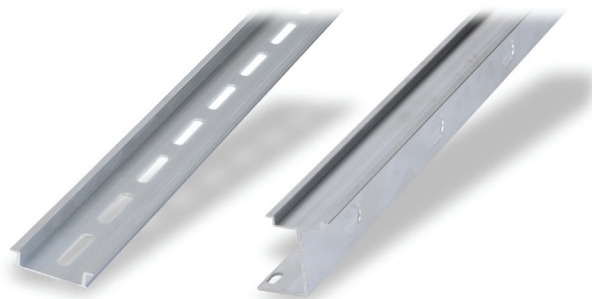
## Aluminum DIN Rail Features

### 35mm wide

- Non-anodized finish
- Zinc plating and passivation (minimum thickness 6 microns)
- Lightweight, easy to cut and deburr
- Terminal blocks only
- Maximum mounting screw #10-32 or M5
- Available in 1-meter lengths

### 35mm wide raised

- Non-anodized finish
- Zinc plating and passivation (minimum thickness 6 microns)
- Enables users to raise terminal blocks 2¼" above the back panel
- Terminal blocks only
- Available in 1-meter lengths
- Bushing or grommet recommended for wire access hole (example Heyco UB-875 not sold by ADC)



Aluminum DIN Rails Specifications						
	Part Number	Qty	Price	Part Number	Qty	Price
<b>DIN Rail</b>	<a href="#">DN-R35SAL1</a>	10	\$60.00	<a href="#">DN-R35SAL2-2</a>	2	\$38.00
	<a href="#">DN-R35SAL1-2</a>	2	\$16.00			
<b>Description</b>	DINnector DIN rail, slotted, 35mm, 10mm height, 1m length, aluminum. Package of 10.			DINnector DIN rail, slotted, 2in raised 35mm, 7.5mm height, 1m length, aluminum. Package of 2.		
<b>Plating</b>	Galvanic zinc plating, non-anodized finish					
<b>International Standards</b>	DIN 50960, RoHs					
<b>Suggested Mounting Screw Type</b>	#10-32 or M5					

# **DINnectors** Accessories

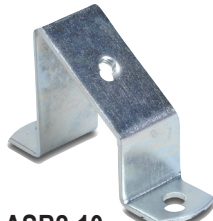
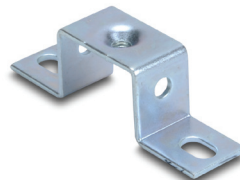
## DIN rail support brackets

- Angled support brackets raise and tilt mounting rails 30 degrees from mounting surface for easier wiring
- [DN-ASB1](#) plated steel support bracket
- [DN-ASB2-10](#) cold-rolled steel treated with galvanic zinc plating and passivation

## DIN rail mounting clips

- Snap small devices not made for mounting onto 35mm DIN rails
- Zinc plated steel

DIN Rail Support Brackets and Mounting Clips			
Part Number	Description	Qty	Price
<a href="#">DN-ASB1</a>	30° angled DIN rail support bracket (M6-1.0 screws not included)	50	\$107.00
<a href="#">DN-ASB2-10</a>	30° angled DIN rail support bracket (M6-1.0 screws included)	10	\$18.00
<a href="#">DN-SSB25-10</a>	1" (25mm) DIN rail support bracket (M6-1.0 screws included)	10	\$24.50
<a href="#">DN-SSB50-10</a>	2" (50mm) DIN rail support bracket (M6-1.0 screws included)	10	\$25.50
<a href="#">DN-SSB70-10</a>	2.75" (70mm) DIN rail support bracket (M6-1.0 screws included)	10	\$32.00
<a href="#">DN-SSB90-10</a>	3.5" (90mm) DIN rail support bracket (M6-1.0 screws included)	10	\$34.50
<a href="#">DN-CLIP-FM4</a>	DIN rail mounting clip with M4 x 0.7 mm threaded hole (Screws not included)	40	\$66.00
<a href="#">DN-CLIP-FM4-5</a>		5	\$9.50
<a href="#">DN-CLIP-FM5</a>	DIN rail mounting clip with M5 x 0.8 mm threaded hole (Screws not included)	40	\$66.00
<a href="#">DN-CLIP-FM5-5</a>		5	\$9.50

[DN-ASB1](#)[DN-ASB2-10](#)[DN-SSB25-10](#)[DN-SSB50-10](#)[DN-SSB70-10](#)[DN-SSB90-10](#)[DN-CLIP-FM4](#)  
[DN-CLIP-FM4-5](#)[DN-CLIP-FM5](#)  
[DN-CLIP-FM5-5](#)