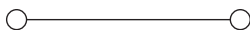


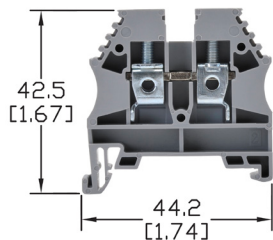


Single-Level Terminal Blocks

- Screw connection terminal
- UL E179129 (For copper wire only. One conductor in terminal only.)
- VDE (IEC 60947-7-1)
- CE (EN 60947-7-1)



Dimensions: mm [in]



See our website: www.AutomationDirect.com for complete engineering drawings

¹UL Usage Group: B, C for 300V or D for 600V

Ordering Information									
Colors	Part Number	Qty	Price	Part Number	Qty	Price	Part Number	Qty	Price
Gray	KN-T12GRY	100	Retired	KN-T10GRY	100	Retired	KN-T8GRY	100	Retired
	KN-T12GRY-25	25	\$9.00	KN-T10GRY-25	25	Retired	KN-T8GRY-25	25	Retired
Blue	KN-T12BLU	100	Retired	KN-T10BLU	100	Retired	KN-T8BLU	100	Retired
	KN-T12BLU-25	25	\$9.00	KN-T10BLU-25	25	Retired	KN-T8BLU-25	25	Retired
Brown	KN-T12BRN	100	Retired	KN-T10BRN	100	Retired	KN-T8BRN	100	Retired
	KN-T12BRN-25	25	\$9.00	KN-T10BRN-25	25	Retired	KN-T8BRN-25	25	Retired
Black	KN-T12BLK	100	Retired	KN-T10BLK	100	Retired	KN-T8BLK	100	Retired
	KN-T12BLK-25	25	\$9.00	KN-T10BLK-25	25	Retired	KN-T8BLK-25	25	Retired
Green	KN-T12GRN	100	Retired	KN-T10GRN	100	Retired	KN-T8GRN	100	Retired
	KN-T12GRN-25	25	\$9.00	KN-T10GRN-25	25	Retired	KN-T8GRN-25	25	Retired
Orange	KN-T12ORG	100	Retired	KN-T10ORG	100	Retired	KN-T8ORG	100	Retired
	KN-T12ORG-25	25	\$9.00	KN-T10ORG-25	25	Retired	KN-T8ORG-25	25	Retired
Red	KN-T12RED	100	Retired	KN-T10RED	100	Retired	KN-T8RED	100	Retired
	KN-T12RED-25	25	\$9.00	KN-T10RED-25	25	Retired	KN-T8RED-25	25	Retired
Yellow	KN-T12YEL	100	Retired	KN-T10YEL	100	Retired	KN-T8YEL	100	Retired
	KN-T12YEL-25	25	\$9.00	KN-T10YEL-25	25	Retired	KN-T8YEL-25	25	Retired
White	KN-T12WHT	100	Retired	KN-T10WHT	100	Retired	KN-T8WHT	100	Retired
	KN-T12WHT-25	25	\$9.00	KN-T10WHT-25	25	Retired	KN-T8WHT-25	25	Retired

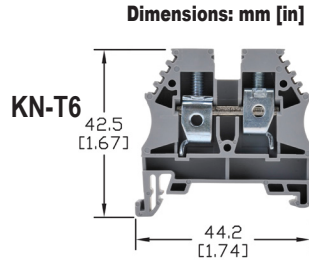
Technical Specifications									
Model	KN-T12			KN-T10			KN-T8		
Width	5mm [0.20 in]			6mm [0.24 in]			8mm [0.31 in]		
Stripping Length	10mm [0.39 in]			10mm [0.39 in]			12mm [0.47 in]		
Tightening Torque	0.4 N·m [3.5 lb·in]			0.5 N·m [4.4 lb·in]			0.8 N·m [7.1 lb·in]		
Density	200/m [60 pcs/ft]			166/m [50 pcs/ft]			125/m [38 pcs/ft]		
UL/CSA Approval	600V	20A	26-12 AWG	300V	30A	26-10 AWG	300V	50A	26-8 AWG
VDE Approval	750V	24A	2.5 mm ²	750V	32A	4mm ²	630V	41A	6mm ²
CE Conformity	750V	24A	2.5 mm ²	750V	32A	4mm ²	630V	41A	6mm ²
SCCR Rating	100kA			100kA			100kA		
Operating Temperature	Ambient air temperature: -67 to 185°F [-55 to 85°C], Relative humidity: 50% max at 104°F [40°C] and 90% max at 68°F [20°C]								
Material	Current Bar: Copper Alloy / Housing: Polyamide 66 / Screw: Zinc Plated Steel								
DIN Rail Width	35mm								

Accessories										
End Covers (International colors)	Gray	KN-ECT6GRY	100/pkg	\$26.50	KN-ECT6GRY	100/pkg	\$26.50	KN-ECT6GRY	100/pkg	\$26.50
		KN-ECT6GRY-25	25/pkg	\$6.00	KN-ECT6GRY-25	25/pkg	\$6.00	KN-ECT6GRY-25	25/pkg	\$6.00
	Blue	KN-ECT6BLU	10/pkg	\$3.00	KN-ECT6BLU	10/pkg	\$3.00	KN-ECT6BLU	10/pkg	\$3.00
	Brown	KN-ECT6BRN		\$3.00	KN-ECT6BRN		\$3.00	KN-ECT6BRN		\$3.00
	Black	KN-ECT6BLK		\$3.00	KN-ECT6BLK		\$3.00	KN-ECT6BLK		\$3.00
	Green	KN-ECT6GRN		\$3.00	KN-ECT6GRN		\$3.00	KN-ECT6GRN		\$3.00
	Orange	KN-ECT6ORG		\$3.00	KN-ECT6ORG		\$3.00	KN-ECT6ORG		\$3.00
	Red	KN-ECT6RED		\$3.00	KN-ECT6RED		\$3.00	KN-ECT6RED		\$3.00
	Yellow	KN-ECT6YEL		\$3.00	KN-ECT6YEL		\$3.00	KN-ECT6YEL		\$3.00
White	KN-ECT6WHT	\$3.00		KN-ECT6WHT	\$3.00		KN-ECT6WHT	\$3.00		
Separators (International colors)	Gray	KN-ST1GRY		25/pkg	\$12.50		KN-ST1GRY	25/pkg		\$12.50
	Blue	KN-ST1BLU	10/pkg	\$4.75	KN-ST1BLU	10/pkg	\$4.75	KN-ST1BLU	10/pkg	\$4.75
	Brown	KN-ST1BRN		\$4.75	KN-ST1BRN		\$4.75	KN-ST1BRN		\$4.75
	Black	KN-ST1BLK		\$4.75	KN-ST1BLK		\$4.75	KN-ST1BLK		\$4.75
	Green	KN-ST1GRN		\$4.75	KN-ST1GRN		\$4.75	KN-ST1GRN		\$4.75
	Orange	KN-ST1ORG		\$4.75	KN-ST1ORG		\$4.75	KN-ST1ORG		\$4.75
	Red	KN-ST1RED		\$4.75	KN-ST1RED		\$4.75	KN-ST1RED		\$4.75
	Yellow	KN-ST1YEL		\$4.75	KN-ST1YEL		\$4.75	KN-ST1YEL		\$4.75
	White	KN-ST1WHT		\$4.75	KN-ST1WHT		\$4.75	KN-ST1WHT		\$4.75
Jumpers	2-pole	KN-2J12		25/pkg	\$12.00		KN-2J10	25/pkg		\$17.00
	3-pole	KN-3J12	20/pkg	\$14.50	KN-3J10	20/pkg	\$20.50	KN-3J8	20/pkg	\$22.00
	4-pole	KN-4J12	15/pkg	\$18.00	KN-4J10	15/pkg	\$20.50	KN-4J8	15/pkg	\$21.50
	10-pole	KN-10J12	5/pkg	\$12.00	KN-10J10	5/pkg	\$14.50	KN-10J8	5/pkg	\$17.00
Comb-type jumper / 2-pole	KN-2JCC12	25/pkg	\$15.50	KN-2JCC10	25/pkg	\$31.00	KN-2JCC8	25/pkg	\$32.50	
Top Cover / Blank	KN-TC-1	25/pkg	\$9.75	KN-TC-1	25/pkg	\$9.75	KN-TC-1	25/pkg	\$9.75	
Top Cover / Symbol	KN-TC-1S	25/pkg	\$14.00	KN-TC-1S	25/pkg	\$14.00	KN-TC-1S	25/pkg	\$14.00	
Marking Tags	KN-L5 Series			KN-L5 Series			KN-L5 / KN-L6P5 Series			



Single-Level Terminal Blocks

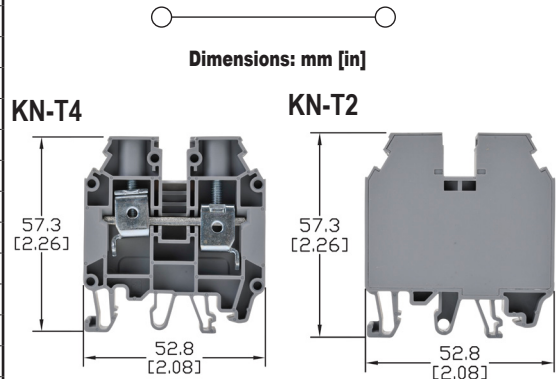
- Screw connection terminal
- UL E179129
(For copper wire only. One conductor in terminal only.)
- VDE (IEC 60947-7-1)
- CE (EN 60947-7-1)



See our website: www.AutomationDirect.com for complete engineering drawings

¹UL Usage Group: B, C for 300V or D for 600V

Ordering Information									
Colors	Part Number	Qty.	Price	Part Number	Qty.	Price	Part Number	Qty.	Price
Gray	KN-T6GRY	100	Retired	KN-T4GRY	50	\$87.00	KN-T2GRY	40	\$109.00
	KN-T6GRY-25	25	\$26.50	KN-T4GRY-25	25	\$54.00	KN-T2GRY-10	10	\$28.00
Blue	KN-T6BLU	100	Retired	KN-T4BLU	50	\$87.00	KN-T2BLU	40	\$109.00
	KN-T6BLU-25	25	\$26.50	KN-T4BLU-25	25	\$54.00	KN-T2BLU-10	10	\$28.00
Brown	KN-T6BRN	100	Retired						
	KN-T6BRN-25	25	\$26.50						
Black	KN-T6BLK	100	Retired						
	KN-T6BLK-25	25	\$26.50						
Green	KN-T6GRN	100	Retired						
	KN-T6GRN-25	25	\$26.50						
Orange	KN-T6ORG	100	Retired						
	KN-T6ORG-25	25	\$26.50						
Red	KN-T6RED	100	Retired						
	KN-T6RED-25	25	\$26.50						
Yellow	KN-T6YEL	100	Retired						
	KN-T6YEL-25	25	\$26.50						
White	KN-T6WHT	100	Retired						
	KN-T6WHT-25	25	\$26.50						

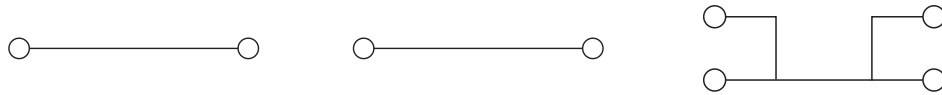


Technical Specifications									
Model	KN-T6			KN-T4			KN-T2		
Width	10mm [0.39 in]			12mm [0.47 in]			16mm [0.63 in]		
Stripping Length	12mm [0.47 in]			16mm [0.63 in]			18mm [0.71 in]		
Tightening Torque	1.2 N·m [10.6 lb·in]			1.2 N·m [10.6 lb·in]			2.5 N·m [22.1 lb·in]		
Density	100/m [33 pcs/ft]			83/m [25 pcs/ft]			62/m [19 pcs/ft]		
UL/CSA Approval	300V	65A	16-6 AWG	600V	80A	12-4 AWG	600V	115A	10-2 AWG
VDE Approval	630V	57A	10mm ²	750V	76A	16mm ²	750V	125A	35mm ²
CE Conformity	630V	57A	10mm ²	750V	76A	16mm ²	750V	125A	35mm ²
SCCR Rating	100kA			100kA			100kA		
Operating Temperature	Ambient air temperature: -67 to 185°F [-55 to 85°C], Relative humidity: 50% max at 104°F [40°C] and 90% max at 68°F [20°C]								
Material	Current Bar: Copper Alloy / Housing: Polyamide 66 / Screws: Zinc Plated Steel								
DIN Rail Width	35mm								

Accessories										
End Covers (International colors)	Gray	KN-ECT6GRY	100/pkg	\$26.50	KN-ECT4GRY	25/pkg	\$12.50	Note: KN-T2 is totally enclosed, no end cover required		
		KN-ECT6GRY-25	25/pkg	\$6.00	—	—				
	Blue	KN-ECT6BLU	10/pkg	\$3.00	KN-ECT4BLU	10/pkg	\$5.25			
		KN-ECT6BRN	10/pkg	\$3.00	—	—				
		KN-ECT6BLK	10/pkg	\$3.00	—	—				
		KN-ECT6GRN	10/pkg	\$3.00	—	—				
		KN-ECT6ORG	10/pkg	\$3.00	—	—				
		KN-ECT6RED	10/pkg	\$3.00	—	—				
		KN-ECT6YEL	10/pkg	\$3.00	—	—				
KN-ECT6WHT	10/pkg	\$3.00	—	—						
Separators (International colors)	Gray	KN-ST1GRY	25/pkg	\$12.50	KN-ST2GRY	25/pkg	\$16.00	KN-ST3GRY	10/pkg	\$8.00
		KN-ST1BLU	10/pkg	\$4.75	KN-ST2BLU	10/pkg	\$16.00	KN-ST3BLU	10/pkg	\$8.00
	Blue	KN-ST1BRN	10/pkg	\$4.75	—	—	—	—	—	
		KN-ST1BLK	10/pkg	\$4.75	—	—	—	—	—	
		KN-ST1GRN	10/pkg	\$4.75	—	—	—	—	—	
		KN-ST1ORG	10/pkg	\$4.75	—	—	—	—	—	
		KN-ST1RED	10/pkg	\$4.75	—	—	—	—	—	
		KN-ST1YEL	10/pkg	\$4.75	—	—	—	—	—	
White	KN-ST1WHT	10/pkg	\$4.75	—	—	—	—	—		
	KN-ST1WHT	10/pkg	\$4.75	—	—	—	—	—		
Jumpers	2-pole	KN-2J6	25/pkg	\$22.50	KN-2J4	25/pkg	\$35.50	KN-2J2	25/pkg	\$36.00
	3-pole	KN-3J6	20/pkg	\$23.50	KN-3J4	20/pkg	\$37.00	KN-3J2	20/pkg	\$39.00
	4-pole	KN-4J6	15/pkg	\$23.50	KN-4J4	15/pkg	\$37.00	KN-4J2	15/pkg	\$39.00
	10-pole	KN-10J6	5/pkg	\$18.50	KN-10J4	5/pkg	\$29.50	KN-10J2	5/pkg	\$29.50
Comb-type jumper / 2-pole	KN-2JCC6	25/pkg	\$36.00	—	—	—	—	—		
Top Cover / Blank	KN-TC-1	25/pkg	\$9.75	KN-TC-2	25/pkg	\$25.00	KN-TC-2	25/pkg	\$25.00	
Top Cover / Symbol	KN-TC-1S	25/pkg	\$14.00	KN-TC-2S	25/pkg	\$25.00	KN-TC-2S	25/pkg	\$25.00	
Marking Tags	KN-L5/ KN-L6P5 Series			KN-L5/ KN-L6P5 Series			KN-L5/ KN-L6P5 Series			

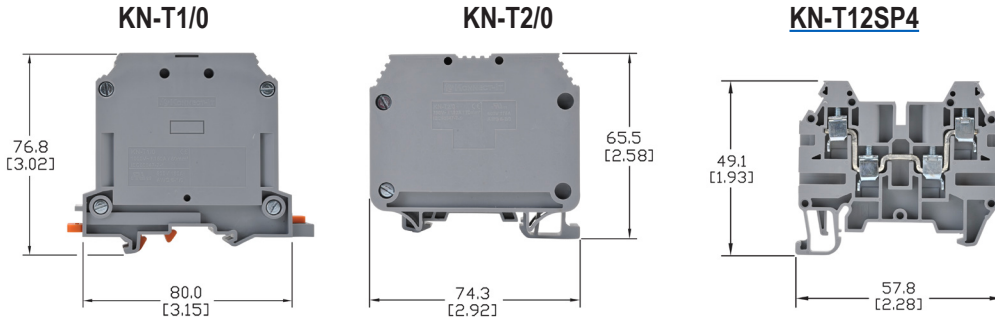


Single-Level Terminal Blocks



Dimensions: mm [in]

- Screw connection terminal
- UL E179129 (For copper wire only. One conductor in terminal only.)
- CE (EN 60947-7-1)



See our website: www.AutomationDirect.com for complete engineering drawings

Ordering Information									
Colors	Part Number	Qty	Price	Part Number	Qty	Price	Part Number	Qty	Price
Gray	KN-T1/0GRY	25	\$105.00	KN-T2/0GRY	10	\$66.00	KN-T12SP4	100	\$192.00
	KN-T1/0GRY-10	10	\$40.50	—	—	—	KN-T12SP4-25	25	\$63.00
Blue	KN-T1/0BLU	25	\$105.00	KN-T2/0BLU	10	\$94.00	—	—	—
	KN-T1/0BLU-10	10	\$40.50	—	—	—	—	—	—

Technical Specifications									
Model	KN-T1/0			KN-T2/0			KN-T12SP4		
Width	20mm [0.79 in]			22mm [0.87 in]			5mm [0.20 in]		
Stripping Length	20mm [0.79 in]			20mm [0.79 in]			10mm [0.39 in]		
Tightening Torque	6.0 N·m [53.1 lb-in]			6.0 N·m [53.1 lb-in]			0.5 N·m [4.4 lb-in]		
Density	50/m [15 pcs/ft]			45/m [13 pcs/ft]			200/m [60 pcs/ft]		
UL/CSA Approval	600V	150A	6-1/0 AWG	600V	175A	6-2/0 AWG	600V	20A	26-12 AWG
CE Conformity	1000V	150A	50mm ²	750V	192A	70mm ²	750V	24A	2.5 mm ²
SCCR Rating	100kA			100kA			100kA per Table SB4.1, 2009, UL 508A.		
Operating Temperature	Ambient air temperature: -67 to 185°F [-55 to 85°C], Relative humidity: 50% max at 104°F [40°C] and 90% max at 68°F [20°C]								
Material	Current Bar: Copper Alloy / Housing: Polyamide 66 / Screws: Zinc Plated Steel								
DIN Rail Width	35mm								

Accessories										
End Covers	Gray	—	—	—	—	—	—	KN-ECT12SP4	25/pkg	\$12.00
Jumpers	2-pole	KN-2J1/0	5/pkg	\$11.00	—	—	—	KN-2JM12	25/pkg	\$10.50
	3-pole	KN-3J1/0	5/pkg	\$18.50	—	—	—	KN-3JM12	20/pkg	\$12.00
	4-pole	KN-4J1/0	5/pkg	\$23.50	—	—	—	KN-4JM12	15/pkg	\$12.00
	10-pole	—	—	—	—	—	—	KN-10JM12	5/pkg	\$13.50
Marking Tags	No tags available				KN-L5 Series KN-L6P5 Series			KN-L5 Series		



100kA Terminal Block Short-Circuit Current Rating Data

Short-Circuit Current Rating Data										
Part Number	Suitable Copper Conductor Range (AWG)		Fuse Class Maximum Amperage						SCCR Rating	Volts Max
	Line	Load	Class J	Class T	Class RK1	Class RK5	Class G	Class CC		
KN-T12 ²	26-12	26-12	20	20	—	—	20	20	100 kA	600
KN-T10 ²	26-10	26-10	30	30	—	—	30	30	100 kA	600
KN-T8 ²	26-8	26-8	50	50	30	—	45	30	100 kA	600
KN-T6 ²	16-6	16-6	80	80	60	30	60	30	100 kA	600
KN-T4 ²	12-4	12-4	80	80	60	30	60	30	100 kA	600
KN-T2 ²	12-2	12-2	125	125	100	30	60	30	100 kA	600
KN-T1/0 ³	6-1/0	6-1/0	150	150	100	30	60	30	100 kA	600
KN-T2/0 ³	6-2/0	6-2/0	225	225	100	60	60	30	100 kA	600
KN-D12 ^{1 2}	26-12	26-12	20	20	—	—	20	20	100 kA	600
KN-D10 ^{1 2}	26-10	26-10	30	30	—	—	30	30	100 kA	600
KN-TL14 ²	24-12	24-12	30	30	—	—	30	30	100 kA	600
KN-TG12 ²	24-12	24-12	30	30	—	—	30	30	100 kA	600
KN-M12 ²	26-12	26-12	30	30	—	—	30	30	100 kA	600
KN-M10 ²	14-12	14-12	30	30	—	—	30	30	100 kA	600

Note: ¹ KN-D12 and KN-D10 have optional short circuit rating evaluated for use with copper conductors only. Must be protected by the max ampere and Class of overcurrent protective device noted above.

² The terminal block short-circuit rating for KN-D12 and KN-D10 were determined based on testing in a minimum size enclosure measuring 4x4x6 inches. The suitability of smaller enclosures shall be determined in the end-use investigation.

³ The terminal block short-circuit rating for KN-T1/0 and KN-T2/0 were determined based on testing in a minimum size enclosure measuring 12x12x6 inches. The suitability of smaller enclosures shall be determined in the end-use investigation.



KONNECT-IT Accessories

Multi-Pole Jumper Bars

Multi-pole jumper bars provide terminal block connection flexibility. Screw-down connection jumpers feature all-metal construction and can be installed quickly just by tightening the screws. Screwless comb-style jumpers are also available. See next page for the larger J1/0 jumper installation instructions.

KN-10J12



KN-2JM12



KN-2JCC8



Multi-Pole Jumper Bars Ordering Information												
Type	Part Number	Price	Qty	Number of Poles	Rating		Tightening Torque	Dimensions - mm [in]			Fig.	Works With
					(V)	(A)		Height	Length	Width		
Screw-down connection	KN-2J12	\$12.00	25	2	750	24	0.4–0.6 Nm [3.5–5.3 lb-in]	15.8 [0.62]	10.1 [0.40]	4.4 [0.17]	1	KN-T12xx KN-D12xx KN-D12X KN-D12DR1 KN-D12LEDxx
	KN-3J12	\$14.50	20	3	750	24			15.3 [0.60]			
	KN-4J12	\$18.00	15	4	750	24			20.4 [0.80]			
	KN-10J12	\$12.00	5	10	750	24			51.1 [2.01]			
	KN-2J10	\$17.00	25	2	750	32	0.6–0.8 Nm [5.3–7.1 lb-In]	15.5 [0.61]	10.8 [0.43]	6.0 [0.24]	1	KN-T10xx KN-D10xx KN-D10X KN-D10DR1 KN-D10LEDxx
	KN-3J10	\$20.50	20	3	750	32			17.0 [0.67]			
	KN-4J10	\$20.50	15	4	750	32			23.0 [0.91]			
	KN-10J10	\$14.50	5	10	750	32			59.0 [2.32]			
	KN-2J8	\$18.00	25	2	630	41	0.6–0.8 Nm [5.3–7.1 lb-In]	15.5 [0.61]	14.3 [0.56]	6.0 [0.24]	1	KN-T8xx
	KN-3J8	\$22.00	20	3	630	41			22.3 [0.88]			
	KN-4J8	\$21.50	15	4	630	41			30.3 [1.19]			
	KN-10J8	\$17.00	5	10	630	41			78.3 [3.08]			
	KN-2J6	\$22.50	25	2	630	57	0.6–0.8 Nm [5.3–7.1 lb-In]	15.5 [0.61]	18.0 [0.71]	6.0 [0.24]	1	KN-T6xx
	KN-3J6	\$23.50	20	3	630	57			28.0 [1.10]			
	KN-4J6	\$23.50	15	4	630	57			38.0 [1.50]			
	KN-10J6	\$18.50	5	10	630	57			98.0 [3.86]			
	KN-2J4	\$35.50	25	2	750	76	0.6–0.8 Nm [5.3–7.1 lb-In]	23.0 [0.91]	21.0 [0.83]	6.0 [0.24]	1	KN-T4xx
	KN-3J4	\$37.00	20	3	750	76			33.0 [1.30]			
	KN-4J4	\$37.00	15	4	750	76			45.0 [1.77]			
	KN-10J4	\$29.50	5	10	750	76			117.0 [4.61]			
KN-2J2	\$36.00	25	2	750	125	1.2–1.4 Nm [10.6–12.4 lb-In]	21.0 [0.83]	29.0 [1.14]	8.0 [0.31]	1	KN-T2xx	
KN-3J2	\$39.00	20	3	750	125			45.0 [1.77]				
KN-4J2	\$39.00	15	4	750	125			61.0 [2.40]				
KN-10J2	\$29.50	5	10	750	125			157.0 [6.18]				
KN-2J1/0	\$11.00	5	2	1000	150	2.5–3.5 Nm [22.1–31.0 lb-In]	22.3 [0.88]	36.0 [1.42]	12.0 [0.47]	2	KN-T1/0xx	
KN-3J1/0	\$18.50	5	3	1000	150			56.0 [2.20]				
KN-4J1/0	\$23.50	5	4	1000	150			76.0 [2.99]				
KN-2JTL12	\$18.50	25	2	440	24	0.4–0.6 Nm [3.5–5.3 lb-In]	15.5 [0.61]	11.0 [0.43]	4.4 [0.17]	1	KN-DG12 KN-TG12 KN-TL14 KN-TL14S KN-TL14SLN KN-TL14SLP	
KN-3JTL12	\$23.00	20	3	440	24			17.0 [0.67]				
KN-4JTL12	\$21.50	15	4	440	24			23.0 [0.91]				
KN-10JTL12	\$18.50	5	10	440	24			59.0 [2.32]				
Push-in Connection	KN-2JM10	\$11.00	25	2	750	32	-	23.2 [0.91]	9.5 [0.37]	2.7 [0.11]	3	KN-M10xx KN-KBD10
	KN-3JM10	\$13.50	20	3	750	32			15.5 [0.61]			
	KN-4JM10	\$15.50	15	4	750	32			21.5 [0.85]			
	KN-10JM10	\$14.50	5	10	750	32			57.5 [2.26]			
	KN-2JM12	\$10.50	25	2	750	24			8.0 [0.31]			
	KN-3JM12	\$12.00	20	3	750	24			13.0 [0.51]			
	KN-4JM12	\$12.00	15	4	750	24			18.0 [0.71]			
Screwless Comb-style	KN-2JCC12	\$15.50	25	2	750	24	-	23.7 [0.93]	8.0 [0.31]	2.8 [0.11]	4	KN-T12xx
	KN-2JCC10	\$31.00	25		750	32	-	24.7 [0.97]	9.5 [0.37]			KN-T10xx
	KN-2JCC8	\$32.50	25		630	41	-	25.6 [1.01]	13.5 [0.53]			KN-T8xx
	KN-2JCC6	\$36.00	25		630	57	-	26.7 [1.05]	16.0 [0.63]			3.9 [0.15]

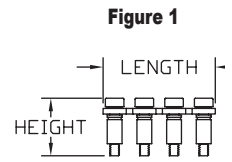


Figure 1

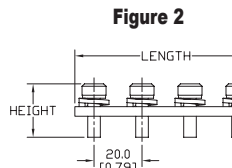


Figure 2

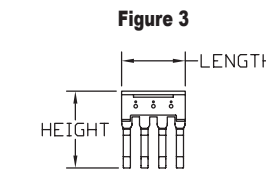


Figure 3

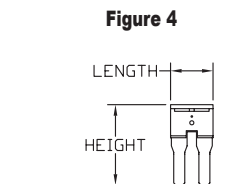


Figure 4

Please visit our website www.AutomationDirect.com for complete engineering drawings.

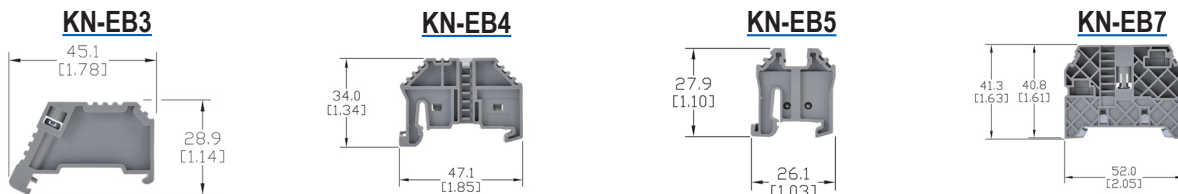


KONNECT-IT Accessories

End Brackets

End brackets prevent terminal blocks and other DIN rail mount components and devices from moving laterally on the rail. They are constructed from polyamide 66 and available in configurations for 35mm and 15mm DIN rails.

Dimensions mm [in]

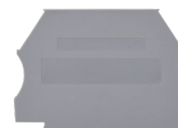


End Brackets Ordering Information												
Gray End Brackets	KN-EB3	100/pkg	\$48.00	KN-EB4	100/pkg	\$50.00	KN-EB5	100/pkg	\$73.00	KN-EB7	50/pkg	\$50.00
	KN-EB3-10	10/pkg	\$6.00	KN-EB4-10	10/pkg	\$4.75	KN-EB5-10	10/pkg	\$8.50	KN-EB7-10	10/pkg	\$9.75
Technical Specifications												
Description	Screw-type end bracket			Screwless end bracket			Screwless end bracket			Screw-type end bracket		
Bracket Width	8 mm [0.31 in]			8 mm [0.31 in]			8 mm [0.31 in]			10 mm [0.39 in]		
DIN Rail Width	35 mm			35 mm			15 mm			35 mm		
Material	Housing: Polyamide 66 / Clamping Connector: Zinc Plated Steel											
End Bracket Accessories												
Label Holder	—	—	—	KN-MA-1	25/pkg	\$21.50	—	—	—	KN-MA-2	50/pkg	\$54.00
	—	—	—	KN-MA-1-10	10/pkg	\$9.75	—	—	—	KN-MA-2-10	10/pkg	\$12.50
Marking Tags	KN-L5 Series or KN-L6P5 Series											

End Covers

End covers are used to cover the open side of sectional DIN rail mount terminal blocks. They should be used at the end of an assembly of identical terminal blocks or whenever there is a change in the physical size of the terminal block.

Material: Polyamide 66



End Covers Ordering Information											
Part Number	Color	Dimensions H x L x W mm [in]	Works With	Qty	Price	Part Number	Color	Dimensions H x L x W mm [in]	Works With	Qty	Price
KN-ECT6GRY	gray	34.0x42.7x1.3 [1.34x1.68x0.05]	KN-T12 KN-T10 KN-T8 KN-T6	100	\$26.50	KN-ECDORG	orange	48.2x63.2x1.3 [1.90x2.49x0.05]	KN-D10 KN-D12	10	\$6.00
KN-ECT6GRY-25	gray			KN-ECDRED	red	\$6.00					
KN-ECT6BLU	blue			KN-ECDYEL	yellow	\$3.00					
KN-ECT6BLK	black			KN-ECTL	gray	\$3.00	54.7x87.1x1.3 [2.15x3.43x0.05]	KN-TL14	10	\$3.75	
KN-ECT6BRN	brown			KN-ECTLS	gray	\$3.00	54.7x72.8x1.2 [2.15x2.87x0.05]	KN-TL14S	10	\$4.75	
KN-ECT6GRN	green			KN-ECDG12	gray	\$3.00	48.0x71.4x1.2 [1.89x2.81x0.05]	KN-DG12	10	\$4.75	
KN-ECT6ORG	orange			KN-ECTG12	gray	\$3.00	62.5x87.5x1.2 [2.46x3.44x0.05]	KN-TG12	10	\$4.75	
KN-ECT6RED	red			KN-ECMGRY	gray	\$3.00	28.1x27.0x3.0 [1.11x1.06x0.12]	KN-M12 KN-M10	100	\$55.00	
KN-ECT6WHT	white			KN-ECMGRY-10	gray	\$3.00			10	\$6.00	
KN-ECT6YEL	yellow			KN-ECMBLU	blue	\$3.00			10	\$6.00	
KN-ECT4GRY	gray	45.7x52.8x1.2 [1.80x2.08x0.05]	KN-T4	25	\$12.50	KN-ECMGRN	green/ yellow	28.1x27.0x3.0 [1.11x1.06x0.12]	KN-MG12 KN-MG10	10	\$6.00
KN-ECT4BLU	blue			KN-ECG12SP4	green/ yellow	10	\$5.25	39.7x57.1x1.2 [1.56x2.25x0.05]	KN-G12SP4	10	\$4.75
KN-ECDGRY	gray	48.2x63.2x1.3 [1.90x2.49x0.05]	KN-D10 KN-D12	25	\$13.50	KN-ECT12SP4	gray	39.7x57.1x1.2 [1.56x2.25x0.05]	KN-T12SP4	25	\$12.00
KN-ECDBLU	blue			KN-ECF10	gray	10	\$6.00	27.3x59.6x1.2 [1.07x2.35x0.05]	KN-F10	25	\$14.50
KN-ECDBLK	black			KN-ECKBD	gray	10	\$6.00	37.1x53.5x1.2 [1.46x2.11x0.05]	KN-KDB10	10	\$6.00
KN-ECDGRN	green					10	\$6.00				



KONNECT-IT Accessories

Separators

Separators are used to segment banks of terminal blocks. Allows you to maintain a single row of terminal blocks, but have separate power source clusters.

Separators Ordering Information							
Part Number	Color	Works With	Dimensions - mm [in]			Qty	Price
			Height	Length	Thickness		
KN-ST1GRY	Gray	KN-T12 KN-T10 KN-T8 KN-T6	39.0 [1.54]	42.5 [1.67]	1.2 [0.05]	10	\$12.50
KN-ST1BLU	Blue						\$4.75
KN-ST1BLK	Black						\$4.75
KN-ST1BRN	Brown						\$4.75
KN-ST1GRN	Green						\$4.75
KN-ST1ORG	Orange						\$4.75
KN-ST1RED	Red						\$4.75
KN-ST1WHT	White						\$4.75
KN-ST1YEL	Yellow						\$4.75
KN-ST2GRY	Gray						KN-T4
KN-ST2BLU	Blue	\$16.00					
KN-ST3GRY	Gray	KN-T2	62.6 [2.46]	53.1 [2.09]	1.5 [0.06]	10	\$8.00
KN-ST3BLU	Blue						\$8.00

KN-ST1GRY



Top Covers and Label Holders

Top Covers and Label Holders Ordering Information							
Part Number	Description	Works With	Dimensions - mm [in]			Qty	Price
			Height	Length	Width		
KN-TC-1	Top cover for Konnect-It terminal block, blank, white	KN-T12 KN-T10 KN-T8 KN-T6	6.8 [0.27]	29.0 [1.14]	5.8 [0.23]	25	\$9.75
KN-TC-1S	Top cover for Konnect-It terminal block, printed electric symbol, white					25	\$14.00
KN-TC-2	Top cover for Konnect-It terminal block, blank, white					KN-T4 KN-T2	7.3 [0.29]
KN-TC-2S	Top cover for Konnect-It terminal block, printed electric symbol, white	25	\$25.00				
KN-MA-1	Label holder for terminal block group. Label media not included. Adhesive label: Apply on top.	KN-EB4	46.2 [1.82]	46.0 [1.81]	11.4 [0.45]	25	\$21.50
KN-MA-1-10	Max label dimensions: 7 x 44 mm (0.28 x 1.73 in).					10	\$9.75
KN-MA-2	Label holder for terminal block group. Label media not included. Adhesive label: Apply on top.	KN-EB7	37.5 [1.48]	46.2 [1.82]	9.5 [0.37]	50	\$54.00
KN-MA-2-10	Max label dimensions: 7 x 44 mm (0.28 x 1.73 in).					10	\$12.50
KN-MA-3	Top mounting marking tag adapter for terminal block. Holds up to (4) L5x5 tags	KN-T4 KN-T2	9.3 [0.36]	36.0 [1.42]	9.0 [0.35]	25	\$14.00
KN-MA-4	Top mounting marking tag adapter for terminal block. Holds up to (4) L5x5 tags	KN-T12 KN-T10 KN-T8 KN-T6	9.0 [0.35]	29.0 [1.14]	5.7 [0.22]	25	\$12.50
KN-MA-5	Label holder for terminal block group. Label media included.	Attaches to any 35mm DIN rail	46.4 [1.83]	44.5 [1.75]	10.0 [0.39]	50	\$44.00
KN-MA-5-25	Max label dimensions: 10 x 38mm (0.39 x 1.50 in). Thickness 0.30 mm (0.01 in)					25	\$27.00

KN-MA-1



KN-MA-2



KN-MA-5



KN-TC-1 / KN-TC-2



KN-TC-1S / KN-TC-2S



KN-MA-3



KN-MA-4





KONNECT-IT Accessories

Marking Tags 5 x 5mm

Use with any KONNECT-IT series terminal blocks.



5 x 5mm Marking Tags Ordering Information											
250 Pieces per Package						500 Pieces per Package					
Part Number	Imprint	Price	Part Number	Imprint	Price	Part Number	Imprint	Price	Part Number	Imprint	Price
KN-L5-BLANK-250	Blank	\$11.50	KN-L5-A-250	A	\$11.50	KN-L5-BLANK	Blank	\$18.00	KN-L5-A	A	\$22.00
KN-L5-0-250	0	\$11.50	KN-L5-B-250	B	\$11.50	KN-L5-0	0	\$22.00	KN-L5-B	B	\$22.00
KN-L5-1-250	1	\$11.50	KN-L5-C-250	C	\$11.50	KN-L5-1	1	\$22.00	KN-L5-C	C	\$22.00
KN-L5-2-250	2	\$11.50	KN-L5-D-250	D	\$11.50	KN-L5-2	2	\$22.00	KN-L5-D	D	\$22.00
KN-L5-3-250	3	\$11.50	KN-L5-E-250	E	\$11.50	KN-L5-3	3	\$22.00	KN-L5-E	E	\$22.00
KN-L5-4-250	4	\$11.50	KN-L5-F-250	F	\$11.50	KN-L5-4	4	\$22.00	KN-L5-F	F	\$22.00
KN-L5-5-250	5	\$11.50	KN-L5-G-250	G	\$11.50	KN-L5-5	5	\$22.00	KN-L5-G	G	\$22.00
KN-L5-6-250	6	\$11.50	KN-L5-H-250	H	\$11.50	KN-L5-6	6	\$22.00	KN-L5-H	H	\$22.00
KN-L5-7-250	7	\$11.50	KN-L5-I-250	I	\$11.50	KN-L5-7	7	\$22.00	KN-L5-I	I	\$22.00
KN-L5-8-250	8	\$11.50	KN-L5-J-250	J	\$12.00	KN-L5-8	8	\$22.00	KN-L5-J	J	\$22.50
KN-L5-9-250	9	\$11.50	KN-L5-K-250	K	\$12.00	KN-L5-9	9	\$22.00	KN-L5-K	K	\$22.50
KN-L5-10-250	10	\$11.50	KN-L5-L-250	L	\$11.50	KN-L5-10	10	\$22.00	KN-L5-L	L	\$22.00
KN-L5-1-10-250	1-10	\$11.50	KN-L5-M-250	M	\$12.00	KN-L5-1-10	1-10	\$22.00	KN-L5-M	M	\$22.50
KN-L5-11-20-250	11-20	\$11.50	KN-L5-N-250	N	\$11.50	KN-L5-11-20	11-20	\$22.00	KN-L5-N	N	\$22.00
KN-L5-21-30-250	21-30	\$11.50	KN-L5-O-250	O	\$11.50	KN-L5-21-30	21-30	\$22.00	KN-L5-O	O	\$22.00
KN-L5-31-40-250	31-40	\$11.50	KN-L5-P-250	P	\$12.00	KN-L5-31-40	31-40	\$22.00	KN-L5-P	P	\$22.50
KN-L5-41-50-250	41-50	\$11.50	KN-L5-Q-250	Q	\$12.00	KN-L5-41-50	41-50	\$22.00	KN-L5-Q	Q	\$22.50
KN-L5-1-50-250	1-50	\$11.50	KN-L5-R-250	R	\$11.50	KN-L5-1-50	1-50	\$22.00	KN-L5-R	R	\$22.00
KN-L5-51-100-250	51-100	\$11.50	KN-L5-S-250	S	\$11.50	KN-L5-51-100	51-100	\$22.00	KN-L5-S	S	\$22.00
KN-L5-101-150-250	101-150	\$11.50	KN-L5-T-250	T	\$11.50	KN-L5-101-150	101-150	\$22.00	KN-L5-T	T	\$22.00
KN-L5-151-200-250	151-200	\$11.50	KN-L5-U-250	U	\$12.00	KN-L5-151-200	151-200	\$22.00	KN-L5-U	U	\$22.50
KN-L5-201-250-250	201-250	\$11.50	KN-L5-V-250	V	\$11.50	KN-L5-201-250	201-250	\$22.00	KN-L5-V	V	\$22.00
KN-L5-251-300-250	251-300	\$11.50	KN-L5-W-250	W	\$12.00	KN-L5-251-300	251-300	\$22.00	KN-L5-W	W	\$22.50
KN-L5-301-350-250	301-350	\$11.50	KN-L5-X-250	X	\$11.50	KN-L5-301-350	301-350	\$22.00	KN-L5-X	X	\$22.00
KN-L5-351-400-250	351-400	\$11.50	KN-L5-Y-250	Y	\$11.50	KN-L5-351-400	351-400	\$22.00	KN-L5-Y	Y	\$22.00
KN-L5-401-450-250	401-450	\$11.50	KN-L5-Z-250	Z	\$12.00	KN-L5-401-450	401-450	\$22.00	KN-L5-Z	Z	\$22.50
KN-L5-451-500-250	451-500	\$11.50	KN-L5-POS-250	+	\$11.50	KN-L5-451-500	451-500	\$22.00	KN-L5-POS	+	\$22.00
KN-L5-L1-250	L1	\$11.50	KN-L5-NEG-250	-	\$11.50	KN-L5-L1	L1	\$22.00	KN-L5-NEG	-	\$22.00
KN-L5-L2-250	L2	\$11.50	KN-L5-GND-250	GND	\$11.50	KN-L5-L2	L2	\$22.00	KN-L5-GND	GND	\$22.00
KN-L5-L3-250	L3	\$11.50				KN-L5-L3	L3	\$22.00			

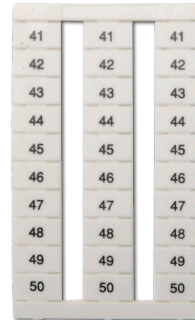


KONNECT-IT Accessories

Marking Tags 6.5 x 10mm

Use with any KONNECT-IT series terminal blocks 6.5mm or wider.

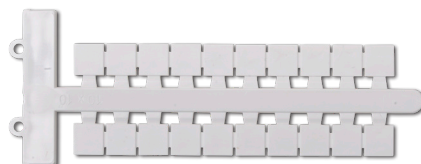
6.5 x 10mm Marking Tags Ordering Information			
Part Number	Description	Qty	Price
<u>KN-L6P5-BLNK-250</u>	Blank	250	\$30.00
<u>KN-L6P5-1-10-250</u>	Numbered 1-10	250	\$31.50
<u>KN-L6P5-11-20-250</u>	Numbered 11-20	250	\$31.50
<u>KN-L6P5-21-30-250</u>	Numbered 21-30	250	\$31.50
<u>KN-L6P5-31-40-250</u>	Numbered 31-40	250	\$31.50
<u>KN-L6P5-41-50-250</u>	Numbered 41-50	250	\$31.50
<u>KN-L6P5-51-60-250</u>	Numbered 51-60	250	\$31.50
<u>KN-L6P5-61-70-250</u>	Numbered 61-70	250	\$31.50
<u>KN-L6P5-71-80-250</u>	Numbered 71-80	250	\$31.50
<u>KN-L6P5-81-90-250</u>	Numbered 81-90	250	\$32.00
<u>KN-L6P5-91-100-250</u>	Numbered 91-100	250	\$32.00
<u>KN-L6P5-BLNK</u>	Blank	500	\$56.00
<u>KN-L6P5-1-10</u>	Numbered 1-10	500	\$57.00
<u>KN-L6P5-11-20</u>	Numbered 11-20	500	\$57.00
<u>KN-L6P5-21-30</u>	Numbered 21-30	500	\$57.00
<u>KN-L6P5-31-40</u>	Numbered 31-40	500	\$57.00
<u>KN-L6P5-41-50</u>	Numbered 41-50	500	\$57.00
<u>KN-L6P5-51-60</u>	Numbered 51-60	500	\$57.00
<u>KN-L6P5-61-70</u>	Numbered 61-70	500	\$57.00
<u>KN-L6P5-71-80</u>	Numbered 71-80	500	\$57.00
<u>KN-L6P5-81-90</u>	Numbered 81-90	500	\$58.00
<u>KN-L6P5-91-100</u>	Numbered 91-100	500	\$58.00



Marking Tags 5 x 10mm, 6 x 10mm, 10 x 10mm

Marking Tags Ordering Information			
Part Number*	Description	Qty	Price
<u>KN-L5X-BLNK-220</u>	Blank marking tag, 5x10mm, use with any Konnect-It terminal block series	220	\$10.50
<u>KN-L6X-BLNK-180</u>	Blank marking tag, 6x10mm, use with any Konnect-It terminal block 6mm or wider	180	\$9.75
<u>KN-L10X-BLNK-100</u>	Blank marking tag, 10x10mm, use with any Konnect-It terminal block 10mm or wider	100	\$14.50
<u>KN-L5X-BLNK</u>	Blank marking tag, 5x10mm, use with any Konnect-It terminal block series	440	\$19.50
<u>KN-L6X-BLNK</u>	Blank marking tag, 6x10mm, use with any Konnect-It terminal block 6mm or wider	360	\$18.50
<u>KN-L10X-BLNK</u>	Blank marking tag, 10x10mm, use with any Konnect-It terminal block 10mm or wider	200	\$26.50

*Does not fit any KN-T1/0xx or [KN-G1/0](#) series block



Accessories

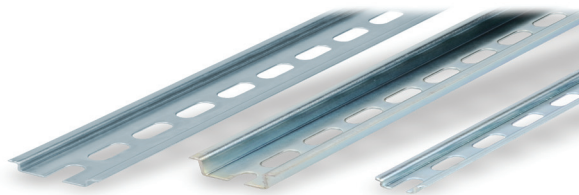
Steel DIN Rails Features

35mm wide

- Available in 1-meter lengths
- 7.5 mm-high rails primarily used to mount terminal blocks, relays, timers and small PLCs such as the BRX, CLICK, DirectLogic and Productivity series. 15mm-high rails for mounting larger and heavier components such as contactors and larger PLCs

15mm wide

- Available in 1-meter lengths
- DN-R15S1 exclusively for mounting mini terminal blocks such as the [DN-M10-A](#)



Steel DIN Rails Specifications									
	Part Number	Qty	Price	Part Number	Qty	Price	Part Number	Qty	Price
DIN Rail	DN-R35S1	10	\$39.00	DN-R35HS1	10	\$68.00	DN-R15S1	10	\$36.00
	DN-R35S1-2	2	\$11.00	DN-R35HS1-2	2	\$16.50	DN-R15S1-2	2	\$10.00
Description	DINnector DIN rail, slotted, 35mm, 7.5mm height, 1m length, plated steel. Package of 10.			DINnector DIN rail, slotted, 35mm, 15mm height, 1m length, plated steel. Package of 10.			DINnector DIN rail, slotted, 15mm, 5.5mm height, 1m length, plated steel. Package of 2.		
Plating	Zinc-plated and chromated								
International Standards	EN 60715, RoHs								
Suggested Mounting Screw Type	M6			M6			M4		

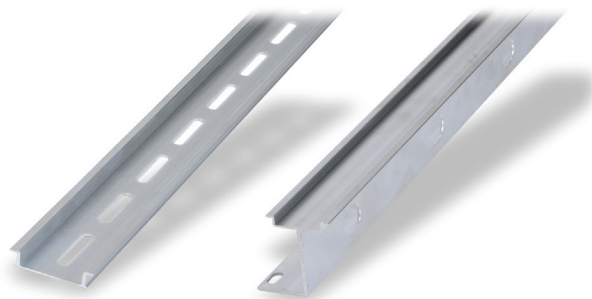
Aluminum DIN Rail Features

35mm wide

- Non-anodized finish
- Zinc plating and passivation (minimum thickness 6 microns)
- Lightweight, easy to cut and deburr
- Terminal blocks only
- Maximum mounting screw #10-32 or M5
- Available in 1-meter lengths

35mm wide raised

- Non-anodized finish
- Zinc plating and passivation (minimum thickness 6 microns)
- Enables users to raise terminal blocks 2¼" above the back panel
- Terminal blocks only
- Available in 1-meter lengths
- Bushing or grommet recommended for wire access hole (example Heyco UB-875 not sold by ADC)



Aluminum DIN Rails Specifications						
	Part Number	Qty	Price	Part Number	Qty	Price
DIN Rail	DN-R35SAL1	10	\$60.00	DN-R35SAL2-2	2	\$38.00
	DN-R35SAL1-2	2	\$16.00			
Description	DINnector DIN rail, slotted, 35mm, 10mm height, 1m length, aluminum. Package of 10.			DINnector DIN rail, slotted, 2in raised 35mm, 7.5mm height, 1m length, aluminum. Package of 2.		
Plating	Galvanic zinc plating, non-anodized finish					
International Standards	DIN 50960, RoHs					
Suggested Mounting Screw Type	#10-32 or M5					

DINnectors Accessories

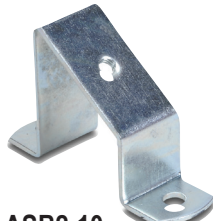
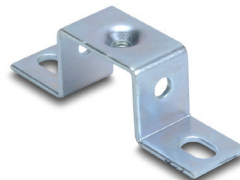
DIN rail support brackets

- Angled support brackets raise and tilt mounting rails 30 degrees from mounting surface for easier wiring
- [DN-ASB1](#) plated steel support bracket
- [DN-ASB2-10](#) cold-rolled steel treated with galvanic zinc plating and passivation

DIN rail mounting clips

- Snap small devices not made for mounting onto 35mm DIN rails
- Zinc plated steel

DIN Rail Support Brackets and Mounting Clips			
Part Number	Description	Qty	Price
DN-ASB1	30° angled DIN rail support bracket (M6-1.0 screws not included)	50	\$107.00
DN-ASB2-10	30° angled DIN rail support bracket (M6-1.0 screws included)	10	\$18.00
DN-SSB25-10	1" (25mm) DIN rail support bracket (M6-1.0 screws included)	10	\$24.50
DN-SSB50-10	2" (50mm) DIN rail support bracket (M6-1.0 screws included)	10	\$25.50
DN-SSB70-10	2.75" (70mm) DIN rail support bracket (M6-1.0 screws included)	10	\$32.00
DN-SSB90-10	3.5" (90mm) DIN rail support bracket (M6-1.0 screws included)	10	\$34.50
DN-CLIP-FM4	DIN rail mounting clip with M4 x 0.7 mm threaded hole (Screws not included)	40	\$66.00
DN-CLIP-FM4-5		5	\$9.50
DN-CLIP-FM5	DIN rail mounting clip with M5 x 0.8 mm threaded hole (Screws not included)	40	\$66.00
DN-CLIP-FM5-5		5	\$9.50

[DN-ASB1](#)[DN-ASB2-10](#)[DN-SSB25-10](#)[DN-SSB50-10](#)[DN-SSB70-10](#)[DN-SSB90-10](#)[DN-CLIP-FM4](#)
[DN-CLIP-FM4-5](#)[DN-CLIP-FM5](#)
[DN-CLIP-FM5-5](#)