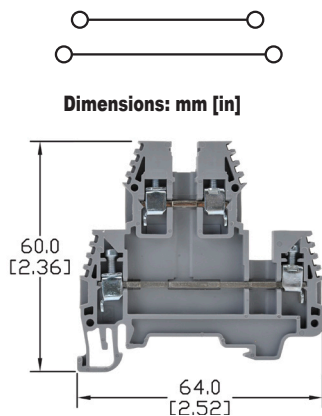




Double-Level Terminal Blocks

- Screw connection terminal
- UL E179129
(For copper wire only. One conductor in terminal only.)
- CE (EN 60947-7-1)



See our website: www.AutomationDirect.com for complete engineering drawings

Ordering Information						
Color	Part Number	Qty.	Price	Part Number	Qty.	Price
Gray	KN-D12GRY	100	\$133.00	KN-D10GRY	100	\$156.00
	KN-D12GRY-25	25	\$36.50	KN-D10GRY-25	25	\$37.50
Blue	KN-D12BLU	100	\$133.00	KN-D10BLU	100	\$156.00
	KN-D12BLU-25	25	\$36.50	KN-D10BLU-25	25	\$37.50
Black	KN-D12BLK	100	\$133.00	KN-D10BLK	100	\$156.00
	KN-D12BLK-25	25	\$36.50	KN-D10BLK-25	25	\$37.50
Green	KN-D12GRN	100	\$140.00	KN-D10GRN	100	\$156.00
	KN-D12GRN-25	25	\$36.50	KN-D10GRN-25	25	\$37.50
Orange	KN-D12ORG	100	\$140.00	KN-D10ORG	100	\$156.00
	KN-D12ORG-25	25	\$36.50	KN-D10ORG-25	25	\$37.50
Red	KN-D12RED	100	\$140.00	KN-D10RED	100	\$156.00
	KN-D12RED-25	25	\$36.50	KN-D10RED-25	25	\$37.50
Yellow	KN-D12YEL	100	\$140.00	KN-D10YEL	100	\$156.00
	KN-D12YEL-25	25	\$36.50	KN-D10YEL-25	25	\$37.50

Technical Specifications						
Model	KN-D12			KN-D10		
Width	5mm [0.20 in]			6mm [0.24 in]		
Stripping Length	9mm [0.35 in]			9mm [0.35 in]		
Tightening Torque	0.4 N·m [3.5 lb·in]			0.5 N·m [4.4 lb·in]		
Density	200/m [60 pcs/ft]			166/m [50 pcs/ft]		
UL/CSA Approval	300V	20A	26-12 AWG	300V	30A	26-10 AWG
CE Conformity	500V	24A	2.5 mm ²	500V	32A	4mm ²
SCCR Rating	100kA			100kA		
Operating Temperature	Ambient air temperature: -67 to 185°F [-55 to 85°C] Relative humidity: 50% max at 104°F [40°C] and 90% max at 68°F [20°C]					
Material	Current Bar: Copper Alloy / Housing: Polyamide 66 / Screws: Zinc Plated Steel					
DIN Rail Width	35mm					

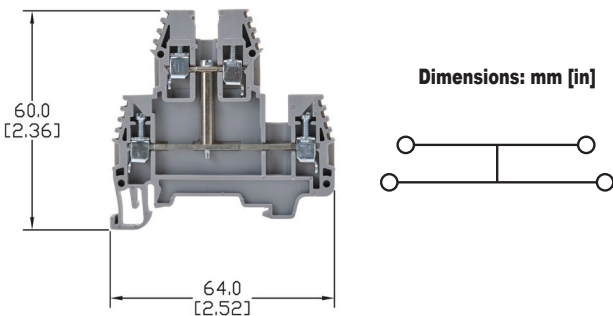
Accessories							
End Covers (International colors)	Gray	KN-ECDGRY	25/pkg	\$13.50	KN-ECDGRY	25/pkg	\$13.50
	Blue	KN-ECDBLU	10/pkg	\$6.00	KN-ECDBLU	10/pkg	\$6.00
	Black	KN-ECDBLK	10/pkg	\$6.00	KN-ECDBLK	10/pkg	\$6.00
	Green	KN-ECDGRN	10/pkg	\$6.00	KN-ECDGRN	10/pkg	\$6.00
	Orange	KN-ECDORG	10/pkg	\$6.00	KN-ECDORG	10/pkg	\$6.00
	Red	KN-ECDRED	10/pkg	\$6.00	KN-ECDRED	10/pkg	\$6.00
	Yellow	KN-ECDYEL	10/pkg	\$6.00	KN-ECDYEL	10/pkg	\$6.00
Jumpers	2-pole	KN-2J12	25/pkg	\$12.00	KN-2J10	25/pkg	\$17.00
	3-pole	KN-3J12	20/pkg	\$14.50	KN-3J10	20/pkg	\$20.50
	4-pole	KN-4J12	15/pkg	\$18.00	KN-4J10	15/pkg	\$20.50
	10-pole	KN-10J12	5/pkg	\$12.00	KN-10J10	5/pkg	\$14.50
Marking Tags	KN-L5 Series						



Double-Level Terminal Blocks

- Screw connection terminal
- UL E179129 (For copper wire only. One conductor in terminal only.)
- CE (EN 60947-7-1)

See our website: www.AutomationDirect.com for complete engineering drawings



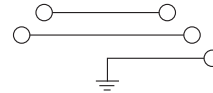
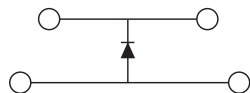
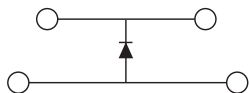
Ordering Information						
Color	Part Number	Qty	Price	Part Number	Qty	Price
Gray	KN-D12X	20	\$62.00	KN-D10X	20	\$67.00

Technical Specifications						
Model	KN-D12X			KN-D10X		
Width	5mm [0.20 in]			6mm [0.24 in]		
Stripping Length	9mm [0.35 in]			9mm [0.35 in]		
Tightening Torque	0.4 N·m [3.5 lb-in]			0.5 N·m [4.4 lb-in]		
Density	200/m [60 pcs/ft]			166/m [50 pcs/ft]		
UL/CSA Approval	300V	20A	26-12 AWG	300V	30A	26-10 AWG
CE Conformity	500V	24A	2.5 mm ²	500V	32A	4mm ²
SCCR Rating	100kA per Table SB4.1, 2009, UL 508A.					
Operating Temperature	Ambient air temperature: -67 to 185°F [-55 to 85°C] Relative humidity: 50% max at 104°F [40°C] and 90% max at 68°F [20°C]					
Material	Current Bar: Copper Alloy / Housing: Polyamide 66 / Screws: Zinc Plated Steel					
DIN Rail Width	35mm					
Accessories						
End Covers	Gray	KN-ECDGRY	25/pkg	\$13.50	KN-ECDGRY	25/pkg \$13.50
Jumpers*	2-pole	KN-2J12	25/pkg	\$12.00	KN-2J10	25/pkg \$17.00
	3-pole	KN-3J12	20/pkg	\$14.50	KN-3J10	20/pkg \$20.50
	4-pole	KN-4J12	15/pkg	\$18.00	KN-4J10	15/pkg \$20.50
	10-pole	KN-10J12	5/pkg	\$12.00	KN-10J10	5/pkg \$14.50
Marking Tags	KN-L5 Series					

* KN-D12X and KN-D10X terminal blocks can only be jumped on the lower decks.



Double-Level Terminal Blocks

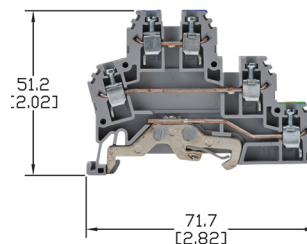
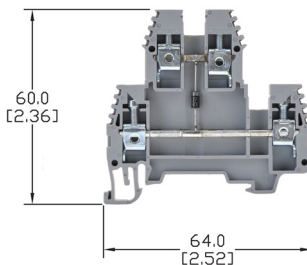
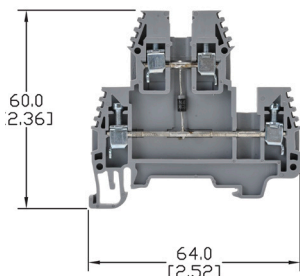


Dimensions: mm [in]

KN-D12DR1

KN-D10DR1

KN-DG12



- Screw connection terminal
- UL E179129 (For copper wire only. One conductor in terminal only.)
- CE (EN 60947-7-1)

See our website: www.AutomationDirect.com for complete engineering drawings

Ordering Information

Color	Part Number	Qty	Price	Part Number	Qty	Price	Part Number	Qty	Price
Gray	KN-D12DR1	20	\$60.00	KN-D10DR1	20	\$65.00	KN-DG12	20	\$99.00

Technical Specifications

Model	KN-D12DR1			KN-D10DR1			KN-DG12		
Width	5mm [0.20 in]			6mm [0.24 in]			6mm [0.24 in]		
Stripping Length	9mm [0.35 in]			9mm [0.35 in]			9mm [0.35 in]		
Tightening Torque	0.4 N·m [3.5 lb·in]			0.5 N·m [4.4 lb·in]			0.4 N·m [3.5 lb·in]		
Density	200/m [60 pcs/ft]			166/m [50 pcs/ft]			166/m [50 pcs/ft]		
UL/CSA Approval	300V	20A	26-12 AWG	300V	30A	26-10 AWG	300V	24A	24-12 AWG
CE Conformity	500V	24A	2.5 mm ²	500V	32A	4mm ²	440V	24A	2.5 mm ²
SCCR Rating	100kA per Table SB4.1, 2009, UL 508A. Maximum short circuit current rating for unmarked components.								
Operating Temperature	Ambient air temperature: -67 to 185°F [-55 to 85°C], Relative humidity: 50% max at 104°F [40°C] and 90% max at 68°F [20°C]								
Material	Current Bar: Copper Alloy / Housing: Polyamide 66 / Screws: Zinc Plated Steel								
DIN Rail Width	35mm								

Accessories

End Cover	Gray	KN-ECDGRY	25/pkg	\$13.50	KN-ECDGRY	25/pkg	\$13.50	KN-ECDG12	10/pkg	\$4.75
Jumpers	2-pole	KN-2J12	25/pkg	\$12.00	KN-2J10	25/pkg	\$17.00	KN-2JTL12	25/pkg	\$18.50
	3-pole	KN-3J12	20/pkg	\$14.50	KN-3J10	20/pkg	\$20.50	KN-3JTL12	20/pkg	\$23.00
	4-pole	KN-4J12	15/pkg	\$18.00	KN-4J10	15/pkg	\$20.50	KN-4JTL12	15/pkg	\$21.50
	10-pole	KN-10J12	5/pkg	\$12.00	KN-10J10	5/pkg	\$14.50	KN-10JTL12	5/pkg	\$18.50
Marking Tags	KN-L5 Series			KN-L5 Series			KN-L5 Series			

1N4007 Diode Information

RMS Reverse Voltage*	V (Rrms)	600V
Average Rectified Forward Current Single Phase, Resistive Load, 60 Hz	I (O)	1.0 A
Non-Repetitive Peak Surge Current (Surge applied at rated load)	I (FSM)	30 A (1 cycle)
Maximum Forward Voltage Drop [I (F) = 1.0 A]	V (F)	1.1 V
Maximum Reverse Current	I (R)	10 µA

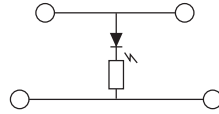
* The maximum reverse voltage rating of the diode alone is 1000V, but should not exceed the maximum 300V rating of the terminal block.



Double-Level Terminal Blocks

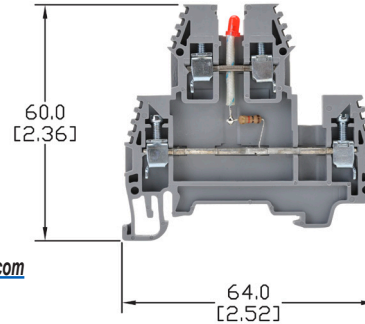
DC LED Terminal Blocks

- Screw connection terminal
- UL E179129
(For copper wire only. One conductor in terminal only.)
- CE (EN 60947-7-1)



See our website: www.AutomationDirect.com
for complete engineering drawings

Dimensions: mm [in]



Ordering Information						
Color	Part Number	Qty	Price	Part Number	Qty	Price
Gray	KN-D12LED-24DC	20	\$75.00	KN-D10LED-24DC	20/pkg	\$87.00
	KN-D12LED-110DC	20	\$75.00	KN-D10LED-110DC	20/pkg	\$87.00

Technical Specifications						
Model	KN-D12LED-xxDC			KN-D10LED-xxDC		
Width	5mm [0.20 in]			6mm [0.24 in]		
Stripping Length	9mm [0.35 in]			9mm [0.35 in]		
Tightening Torque	0.4 N·m [3.5 lb-in]			0.5 N·m [4.4 lb-in]		
Density	200/m [60 pcs/ft]			166/m [50 pcs/ft]		
UL/CSA Approval	300V	20A	26-12 AWG	300V	30A	26-10 AWG
CE Conformity	24VDC/110VDC	24A	2.5 mm ²	24VDC/110VDC	32A	4mm ²
LED Voltage	2 Volts			2 Volts		
Resistor Value	10kΩ (KN-D12LED-24DC), 2mA, 9-36 VDC 56kΩ (KN-D12LED-110DC), 2mA, 60-150 VDC			10kΩ (KN-D10LED-24DC), 2mA, 9-36 VDC 56kΩ (KN-D10LED-110DC), 2mA, 60-150 VDC		
SCCR Rating	100kA per Table SB4.1, 2009, UL 508A. Maximum short circuit current rating for unmarked components.					
Operating Temperature	Ambient air temperature: -67 to 185°F [-55 to 85°C] Relative humidity: 50% max at 104°F [40°C] and 90% max at 68°F [20°C]					
Material	Current Bar: Copper Alloy / Housing: Polyamide 66 / Screws: Zinc Plated Steel					
DIN Rail Width	35mm					

Accessories							
End Covers	Gray	KN-ECDGRY	25/pkg	\$13.50	KN-ECDGRY	25/pkg	\$13.50
*Jumpers	2-pole	KN-2J12	25/pkg	\$12.00	KN-2J10	25/pkg	\$17.00
	3-pole	KN-3J12	20/pkg	\$14.50	KN-3J10	20/pkg	\$20.50
	4-pole	KN-4J12	15/pkg	\$18.00	KN-4J10	15/pkg	\$20.50
	10-pole	KN-10J12	5/pkg	\$12.00	KN-10J10	5/pkg	\$14.50
Marking Tags	KN-L5 Series				KN-L5 Series		

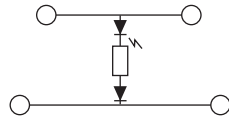
*Only lower decks can be jumpered.



Double-Level Terminal Blocks

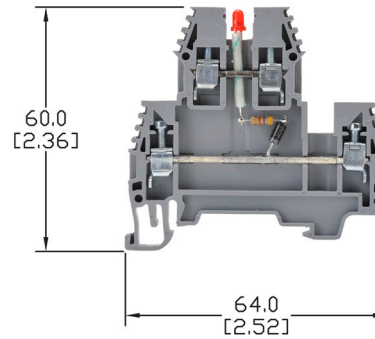
AC LED Terminal Blocks

- Screw connection terminal
- UL E179129
(For copper wire only. One conductor in terminal only.)
- CE (EN 60947-7-1)



See our website: www.AutomationDirect.com
for complete engineering drawings

Dimensions: mm [in]



Ordering Information						
Color	Part Number	Qty	Price	Part Number	Qty	Price
Gray	KN-D12LED-24AC	20/pkg	\$75.00	KN-D10LED-24AC	20/pkg	\$87.00
	KN-D12LED-110AC	20/pkg	\$75.00	KN-D10LED-110AC	20/pkg	\$87.00

Technical Specifications						
Model	KN-D12LED-xxAC			KN-D10LED-xxAC		
Width	5mm [0.20 in]			6mm [0.24 in]		
Stripping Length	9mm [0.35 in]			9mm [0.35 in]		
Tightening Torque	0.4 N·m [3.5 lb-in]			0.5 N·m [4.4 lb-in]		
Density	200/m [60 pcs/ft]			166/m [50 pcs/ft]		
UL/CSA Approval	300V	20A	26-12 AWG	300V	30A	26-10 AWG
CE Conformity	24VAC/110VAC	24A	2.5 mm ²	24VAC/110VAC	32A	4mm ²
LED Voltage	2 Volts			2 Volts		
Resistor Value	4.7kΩ (KN-D12LED-24AC), 2.5 mA, 9-36 VAC 33kΩ (KN-D12LED-110AC), 2mA, 60-150 VAC			4.7kΩ (KN-D10LED-24AC), 2.5 mA, 9-36 VAC 33kΩ (KN-D10LED-110AC), 2mA, 60-150 VAC		
SCCR Rating	100kA per Table SB4.1, 2009, UL 508A. Maximum short circuit current rating for unmarked components.					
Operating Temperature	Ambient air temperature: -67 to 185°F [-55 to 85°C] Relative humidity: 50% max at 104°F [40°C] and 90% max at 68°F [20°C]					
Material	Current Bar: Copper Alloy / Housing: Polyamide 66 / Screws: Zinc Plated Steel					
DIN Rail Width	35mm					

Accessories							
End Covers	Gray	KN-ECDGRY	25/pkg	\$13.50	KN-ECDGRY	25/pkg	\$13.50
Jumpers	2-pole	KN-2J12	25/pkg	\$12.00	KN-2J10	25/pkg	\$17.00
	3-pole	KN-3J12	20/pkg	\$14.50	KN-3J10	20/pkg	\$20.50
	4-pole	KN-4J12	15/pkg	\$18.00	KN-4J10	15/pkg	\$20.50
	10-pole	KN-10J12	5/pkg	\$12.00	KN-10J10	5/pkg	\$14.50
Marking Tags	KN-L5 Series			KN-L5 Series			

*Only lower decks can be jumpered



100kA Terminal Block Short-Circuit Current Rating Data

Short-Circuit Current Rating Data										
Part Number	Suitable Copper Conductor Range (AWG)		Fuse Class Maximum Amperage						SCCR Rating	Volts Max
	Line	Load	Class J	Class T	Class RK1	Class RK5	Class G	Class CC		
KN-T12 ²	26-12	26-12	20	20	—	—	20	20	100 kA	600
KN-T10 ²	26-10	26-10	30	30	—	—	30	30	100 kA	600
KN-T8 ²	26-8	26-8	50	50	30	—	45	30	100 kA	600
KN-T6 ²	16-6	16-6	80	80	60	30	60	30	100 kA	600
KN-T4 ²	12-4	12-4	80	80	60	30	60	30	100 kA	600
KN-T2 ²	12-2	12-2	125	125	100	30	60	30	100 kA	600
KN-T1/0 ³	6-1/0	6-1/0	150	150	100	30	60	30	100 kA	600
KN-T2/0 ³	6-2/0	6-2/0	225	225	100	60	60	30	100 kA	600
KN-D12 ^{1 2}	26-12	26-12	20	20	—	—	20	20	100 kA	600
KN-D10 ^{1 2}	26-10	26-10	30	30	—	—	30	30	100 kA	600
KN-TL14 ²	24-12	24-12	30	30	—	—	30	30	100 kA	600
KN-TG12 ²	24-12	24-12	30	30	—	—	30	30	100 kA	600
KN-M12 ²	26-12	26-12	30	30	—	—	30	30	100 kA	600
KN-M10 ²	14-12	14-12	30	30	—	—	30	30	100 kA	600

Note: ¹ KN-D12 and KN-D10 have optional short circuit rating evaluated for use with copper conductors only. Must be protected by the max ampere and Class of overcurrent protective device noted above.

² The terminal block short-circuit rating for KN-D12 and KN-D10 were determined based on testing in a minimum size enclosure measuring 4x4x6 inches. The suitability of smaller enclosures shall be determined in the end-use investigation.

³ The terminal block short-circuit rating for KN-T1/0 and KN-T2/0 were determined based on testing in a minimum size enclosure measuring 12x12x6 inches. The suitability of smaller enclosures shall be determined in the end-use investigation.



KONNECT-IT Accessories

Multi-Pole Jumper Bars

Multi-pole jumper bars provide terminal block connection flexibility. Screw-down connection jumpers feature all-metal construction and can be installed quickly just by tightening the screws. Screwless comb-style jumpers are also available. See next page for the larger J1/0 jumper installation instructions.

KN-10J12



KN-2JM12



KN-2JCC8



Multi-Pole Jumper Bars Ordering Information

Type	Part Number	Price	Qty	Number of Poles	Rating		Tightening Torque	Dimensions - mm [in]			Fig.	Works With
					(V)	(A)		Height	Length	Width		
Screw-down connection	KN-2J12	\$12.00	25	2	750	24	0.4–0.6 Nm [3.5–5.3 lb-in]	15.8 [0.62]	10.1 [0.40]	4.4 [0.17]	1	KN-T12xx KN-D12xx KN-D12X KN-D12DR1 KN-D12LEDxx
	KN-3J12	\$14.50	20	3	750	24			15.3 [0.60]			
	KN-4J12	\$18.00	15	4	750	24			20.4 [0.80]			
	KN-10J12	\$12.00	5	10	750	24			51.1 [2.01]			
	KN-2J10	\$17.00	25	2	750	32	0.6–0.8 Nm [5.3–7.1 lb-In]	15.5 [0.61]	10.8 [0.43]	6.0 [0.24]	1	KN-T10xx KN-D10xx KN-D10X KN-D10DR1 KN-D10LEDxx
	KN-3J10	\$20.50	20	3	750	32			17.0 [0.67]			
	KN-4J10	\$20.50	15	4	750	32			23.0 [0.91]			
	KN-10J10	\$14.50	5	10	750	32			59.0 [2.32]			
	KN-2J8	\$18.00	25	2	630	41	0.6–0.8 Nm [5.3–7.1 lb-In]	15.5 [0.61]	14.3 [0.56]	6.0 [0.24]	1	KN-T8xx
	KN-3J8	\$22.00	20	3	630	41			22.3 [0.88]			
	KN-4J8	\$21.50	15	4	630	41			30.3 [1.19]			
	KN-10J8	\$17.00	5	10	630	41			78.3 [3.08]			
	KN-2J6	\$22.50	25	2	630	57	0.6–0.8 Nm [5.3–7.1 lb-In]	15.5 [0.61]	18.0 [0.71]	6.0 [0.24]	1	KN-T6xx
	KN-3J6	\$23.50	20	3	630	57			28.0 [1.10]			
	KN-4J6	\$23.50	15	4	630	57			38.0 [1.50]			
	KN-10J6	\$18.50	5	10	630	57			98.0 [3.86]			
	KN-2J4	\$35.50	25	2	750	76	0.6–0.8 Nm [5.3–7.1 lb-In]	23.0 [0.91]	21.0 [0.83]	6.0 [0.24]	1	KN-T4xx
	KN-3J4	\$37.00	20	3	750	76			33.0 [1.30]			
	KN-4J4	\$37.00	15	4	750	76			45.0 [1.77]			
	KN-10J4	\$29.50	5	10	750	76			117.0 [4.61]			
KN-2J2	\$36.00	25	2	750	125	1.2–1.4 Nm [10.6–12.4 lb-In]	21.0 [0.83]	29.0 [1.14]	8.0 [0.31]	1	KN-T2xx	
KN-3J2	\$39.00	20	3	750	125			45.0 [1.77]				
KN-4J2	\$39.00	15	4	750	125			61.0 [2.40]				
KN-10J2	\$29.50	5	10	750	125			157.0 [6.18]				
KN-2J1/0	\$11.00	5	2	1000	150	2.5–3.5 Nm [22.1–31.0 lb-In]	22.3 [0.88]	36.0 [1.42]	12.0 [0.47]	2	KN-T1/0xx	
KN-3J1/0	\$18.50	5	3	1000	150			56.0 [2.20]				
KN-4J1/0	\$23.50	5	4	1000	150			76.0 [2.99]				
KN-2JTL12	\$18.50	25	2	440	24	0.4–0.6 Nm [3.5–5.3 lb-In]	15.5 [0.61]	11.0 [0.43]	4.4 [0.17]	1	KN-DG12 KN-TG12 KN-TL14 KN-TL14S KN-TL14SLN KN-TL14SLP	
KN-3JTL12	\$23.00	20	3	440	24			17.0 [0.67]				
KN-4JTL12	\$21.50	15	4	440	24			23.0 [0.91]				
KN-10JTL12	\$18.50	5	10	440	24			59.0 [2.32]				
Push-in Connection	KN-2JM10	\$11.00	25	2	750	32	-	23.2 [0.91]	9.5 [0.37]	2.7 [0.11]	3	KN-M10xx KN-KBD10
	KN-3JM10	\$13.50	20	3	750	32			15.5 [0.61]			
	KN-4JM10	\$15.50	15	4	750	32			21.5 [0.85]			
	KN-10JM10	\$14.50	5	10	750	32			57.5 [2.26]			
	KN-2JM12	\$10.50	25	2	750	24			8.0 [0.31]			
	KN-3JM12	\$12.00	20	3	750	24			13.0 [0.51]			
	KN-4JM12	\$12.00	15	4	750	24			18.0 [0.71]			
Screwless Comb-style	KN-2JCC12	\$15.50	25	2	750	24	-	23.7 [0.93]	8.0 [0.31]	2.8 [0.11]	4	KN-T12xx KN-T10xx KN-T8xx KN-T6xx
	KN-2JCC10	\$31.00	25		750	32	-	24.7 [0.97]	9.5 [0.37]			
	KN-2JCC8	\$32.50	25		630	41	-	25.6 [1.01]	13.5 [0.53]			
	KN-2JCC6	\$36.00	25		630	57	-	26.7 [1.05]	16.0 [0.63]			

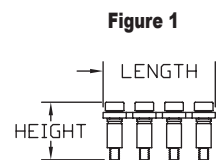


Figure 1

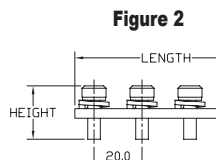


Figure 2

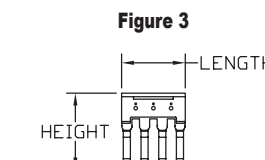


Figure 3

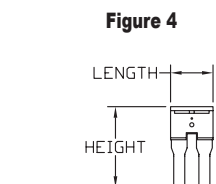


Figure 4

Please visit our website www.AutomationDirect.com for complete engineering drawings.

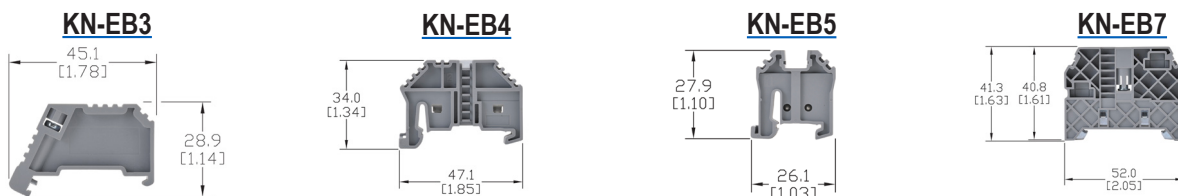


KONNECT-IT Accessories

End Brackets

End brackets prevent terminal blocks and other DIN rail mount components and devices from moving laterally on the rail. They are constructed from polyamide 66 and available in configurations for 35mm and 15mm DIN rails.

Dimensions mm [in]

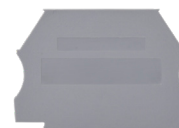


End Brackets Ordering Information												
Gray End Brackets	KN-EB3	100/pkg	\$48.00	KN-EB4	100/pkg	\$50.00	KN-EB5	100/pkg	\$73.00	KN-EB7	50/pkg	\$50.00
	KN-EB3-10	10/pkg	\$6.00	KN-EB4-10	10/pkg	\$4.75	KN-EB5-10	10/pkg	\$8.50	KN-EB7-10	10/pkg	\$9.75
Technical Specifications												
Description	Screw-type end bracket			Screwless end bracket			Screwless end bracket			Screw-type end bracket		
Bracket Width	8 mm [0.31 in]			8 mm [0.31 in]			8 mm [0.31 in]			10 mm [0.39 in]		
DIN Rail Width	35 mm			35 mm			15 mm			35 mm		
Material	Housing: Polyamide 66 / Clamping Connector: Zinc Plated Steel											
End Bracket Accessories												
Label Holder	—	—	—	KN-MA-1	25/pkg	\$21.50	—	—	—	KN-MA-2	50/pkg	\$54.00
	—	—	—	KN-MA-1-10	10/pkg	\$9.75	—	—	—	KN-MA-2-10	10/pkg	\$12.50
Marking Tags	KN-L5 Series or KN-L6P5 Series											

End Covers

End covers are used to cover the open side of sectional DIN rail mount terminal blocks. They should be used at the end of an assembly of identical terminal blocks or whenever there is a change in the physical size of the terminal block.

Material: Polyamide 66



End Covers Ordering Information											
Part Number	Color	Dimensions H x L x W mm [in]	Works With	Qty	Price	Part Number	Color	Dimensions H x L x W mm [in]	Works With	Qty	Price
KN-ECT6GRY	gray	34.0x42.7x1.3 [1.34x1.68x0.05]	KN-T12 KN-T10 KN-T8 KN-T6	100	\$26.50	KN-ECDORG	orange	48.2x63.2x1.3 [1.90x2.49x0.05]	KN-D10 KN-D12	10	\$6.00
KN-ECT6GRY-25	gray			KN-ECDRED	red	\$6.00					
KN-ECT6BLU	blue			KN-ECDYEL	yellow	\$3.00					
KN-ECT6BLK	black			KN-ECTL	gray	\$3.00	54.7x87.1x1.3 [2.15x3.43x0.05]	KN-TL14	10	\$3.75	
KN-ECT6BRN	brown			KN-ECTLS	gray	\$3.00	54.7x72.8x1.2 [2.15x2.87x0.05]	KN-TL14S	10	\$4.75	
KN-ECT6GRN	green			KN-ECDG12	gray	\$3.00	48.0x71.4x1.2 [1.89x2.81x0.05]	KN-DG12	10	\$4.75	
KN-ECT6ORG	orange			KN-ECTG12	gray	\$3.00	62.5x87.5x1.2 [2.46x3.44x0.05]	KN-TG12	10	\$4.75	
KN-ECT6RED	red			KN-ECMGRY	gray	\$3.00	28.1x27.0x3.0 [1.11x1.06x0.12]	KN-M12 KN-M10	100	\$55.00	
KN-ECT6WHT	white			KN-ECMGRY-10	gray	\$3.00			10	\$6.00	
KN-ECT6YEL	yellow			KN-ECMBLU	blue	\$3.00			10	\$6.00	
KN-ECT4GRY	gray	45.7x52.8x1.2 [1.80x2.08x0.05]	KN-T4	25	\$12.50	KN-ECMGRN	green/ yellow	28.1x27.0x3.0 [1.11x1.06x0.12]	KN-MG12 KN-MG10	10	\$6.00
KN-ECT4BLU	blue			KN-ECG12SP4	green/ yellow	10	\$5.25	39.7x57.1x1.2 [1.56x2.25x0.05]	KN-G12SP4	10	\$4.75
KN-ECDGRY	gray	48.2x63.2x1.3 [1.90x2.49x0.05]	KN-D10 KN-D12	25	\$13.50	KN-ECT12SP4	gray	39.7x57.1x1.2 [1.56x2.25x0.05]	KN-T12SP4	25	\$12.00
KN-ECDBLU	blue			KN-ECF10	gray	10	\$6.00	27.3x59.6x1.2 [1.07x2.35x0.05]	KN-F10	25	\$14.50
KN-ECDBLK	black			KN-ECKBD	gray	10	\$6.00	37.1x53.5x1.2 [1.46x2.11x0.05]	KN-KDB10	10	\$6.00
KN-ECDGRN	green					10	\$6.00				



KONNECT-IT Accessories

Separators

Separators are used to segment banks of terminal blocks. Allows you to maintain a single row of terminal blocks, but have separate power source clusters.

Separators Ordering Information							
Part Number	Color	Works With	Dimensions - mm [in]			Qty	Price
			Height	Length	Thickness		
KN-ST1GRY	Gray	KN-T12 KN-T10 KN-T8 KN-T6	39.0 [1.54]	42.5 [1.67]	1.2 [0.05]	10	\$12.50
KN-ST1BLU	Blue						\$4.75
KN-ST1BLK	Black						\$4.75
KN-ST1BRN	Brown						\$4.75
KN-ST1GRN	Green						\$4.75
KN-ST1ORG	Orange						\$4.75
KN-ST1RED	Red						\$4.75
KN-ST1WHT	White						\$4.75
KN-ST1YEL	Yellow						\$4.75
KN-ST2GRY	Gray						KN-T4
KN-ST2BLU	Blue	\$16.00					
KN-ST3GRY	Gray	KN-T2	62.6 [2.46]	53.1 [2.09]	1.5 [0.06]	10	\$8.00
KN-ST3BLU	Blue						\$8.00

KN-ST1GRY



Top Covers and Label Holders

Top Covers and Label Holders Ordering Information							
Part Number	Description	Works With	Dimensions - mm [in]			Qty	Price
			Height	Length	Width		
KN-TC-1	Top cover for Konnect-It terminal block, blank, white	KN-T12 KN-T10 KN-T8 KN-T6	6.8 [0.27]	29.0 [1.14]	5.8 [0.23]	25	\$9.75
KN-TC-1S	Top cover for Konnect-It terminal block, printed electric symbol, white					25	\$14.00
KN-TC-2	Top cover for Konnect-It terminal block, blank, white					KN-T4 KN-T2	7.3 [0.29]
KN-TC-2S	Top cover for Konnect-It terminal block, printed electric symbol, white	25	\$25.00				
KN-MA-1	Label holder for terminal block group. Label media not included. Adhesive label: Apply on top.	KN-EB4	46.2 [1.82]	46.0 [1.81]	11.4 [0.45]	25	\$21.50
KN-MA-1-10	Max label dimensions: 7 x 44 mm (0.28 x 1.73 in).					10	\$9.75
KN-MA-2	Label holder for terminal block group. Label media not included. Adhesive label: Apply on top.	KN-EB7	37.5 [1.48]	46.2 [1.82]	9.5 [0.37]	50	\$54.00
KN-MA-2-10	Max label dimensions: 7 x 44 mm (0.28 x 1.73 in).					10	\$12.50
KN-MA-3	Top mounting marking tag adapter for terminal block. Holds up to (4) L5x5 tags	KN-T4 KN-T2	9.3 [0.36]	36.0 [1.42]	9.0 [0.35]	25	\$14.00
KN-MA-4	Top mounting marking tag adapter for terminal block. Holds up to (4) L5x5 tags	KN-T12 KN-T10 KN-T8 KN-T6	9.0 [0.35]	29.0 [1.14]	5.7 [0.22]	25	\$12.50
KN-MA-5	Label holder for terminal block group. Label media included.	Attaches to any 35mm DIN rail	46.4 [1.83]	44.5 [1.75]	10.0 [0.39]	50	\$44.00
KN-MA-5-25	Max label dimensions: 10 x 38mm (0.39 x 1.50 in). Thickness 0.30 mm (0.01 in)					25	\$27.00

KN-MA-1



KN-MA-2



KN-MA-5



KN-TC-1 / KN-TC-2



KN-TC-1S / KN-TC-2S



KN-MA-3



KN-MA-4





KONNECT-IT Accessories

Marking Tags 5 x 5mm

Use with any KONNECT-IT series terminal blocks.



5 x 5mm Marking Tags Ordering Information											
250 Pieces per Package						500 Pieces per Package					
Part Number	Imprint	Price	Part Number	Imprint	Price	Part Number	Imprint	Price	Part Number	Imprint	Price
KN-L5-BLANK-250	Blank	\$11.50	KN-L5-A-250	A	\$11.50	KN-L5-BLANK	Blank	\$18.00	KN-L5-A	A	\$22.00
KN-L5-0-250	0	\$11.50	KN-L5-B-250	B	\$11.50	KN-L5-0	0	\$22.00	KN-L5-B	B	\$22.00
KN-L5-1-250	1	\$11.50	KN-L5-C-250	C	\$11.50	KN-L5-1	1	\$22.00	KN-L5-C	C	\$22.00
KN-L5-2-250	2	\$11.50	KN-L5-D-250	D	\$11.50	KN-L5-2	2	\$22.00	KN-L5-D	D	\$22.00
KN-L5-3-250	3	\$11.50	KN-L5-E-250	E	\$11.50	KN-L5-3	3	\$22.00	KN-L5-E	E	\$22.00
KN-L5-4-250	4	\$11.50	KN-L5-F-250	F	\$11.50	KN-L5-4	4	\$22.00	KN-L5-F	F	\$22.00
KN-L5-5-250	5	\$11.50	KN-L5-G-250	G	\$11.50	KN-L5-5	5	\$22.00	KN-L5-G	G	\$22.00
KN-L5-6-250	6	\$11.50	KN-L5-H-250	H	\$11.50	KN-L5-6	6	\$22.00	KN-L5-H	H	\$22.00
KN-L5-7-250	7	\$11.50	KN-L5-I-250	I	\$11.50	KN-L5-7	7	\$22.00	KN-L5-I	I	\$22.00
KN-L5-8-250	8	\$11.50	KN-L5-J-250	J	\$12.00	KN-L5-8	8	\$22.00	KN-L5-J	J	\$22.50
KN-L5-9-250	9	\$11.50	KN-L5-K-250	K	\$12.00	KN-L5-9	9	\$22.00	KN-L5-K	K	\$22.50
KN-L5-10-250	10	\$11.50	KN-L5-L-250	L	\$11.50	KN-L5-10	10	\$22.00	KN-L5-L	L	\$22.00
KN-L5-1-10-250	1-10	\$11.50	KN-L5-M-250	M	\$12.00	KN-L5-1-10	1-10	\$22.00	KN-L5-M	M	\$22.50
KN-L5-11-20-250	11-20	\$11.50	KN-L5-N-250	N	\$11.50	KN-L5-11-20	11-20	\$22.00	KN-L5-N	N	\$22.00
KN-L5-21-30-250	21-30	\$11.50	KN-L5-O-250	O	\$11.50	KN-L5-21-30	21-30	\$22.00	KN-L5-O	O	\$22.00
KN-L5-31-40-250	31-40	\$11.50	KN-L5-P-250	P	\$12.00	KN-L5-31-40	31-40	\$22.00	KN-L5-P	P	\$22.50
KN-L5-41-50-250	41-50	\$11.50	KN-L5-Q-250	Q	\$12.00	KN-L5-41-50	41-50	\$22.00	KN-L5-Q	Q	\$22.50
KN-L5-1-50-250	1-50	\$11.50	KN-L5-R-250	R	\$11.50	KN-L5-1-50	1-50	\$22.00	KN-L5-R	R	\$22.00
KN-L5-51-100-250	51-100	\$11.50	KN-L5-S-250	S	\$11.50	KN-L5-51-100	51-100	\$22.00	KN-L5-S	S	\$22.00
KN-L5-101-150-250	101-150	\$11.50	KN-L5-T-250	T	\$11.50	KN-L5-101-150	101-150	\$22.00	KN-L5-T	T	\$22.00
KN-L5-151-200-250	151-200	\$11.50	KN-L5-U-250	U	\$12.00	KN-L5-151-200	151-200	\$22.00	KN-L5-U	U	\$22.50
KN-L5-201-250-250	201-250	\$11.50	KN-L5-V-250	V	\$11.50	KN-L5-201-250	201-250	\$22.00	KN-L5-V	V	\$22.00
KN-L5-251-300-250	251-300	\$11.50	KN-L5-W-250	W	\$12.00	KN-L5-251-300	251-300	\$22.00	KN-L5-W	W	\$22.50
KN-L5-301-350-250	301-350	\$11.50	KN-L5-X-250	X	\$11.50	KN-L5-301-350	301-350	\$22.00	KN-L5-X	X	\$22.00
KN-L5-351-400-250	351-400	\$11.50	KN-L5-Y-250	Y	\$11.50	KN-L5-351-400	351-400	\$22.00	KN-L5-Y	Y	\$22.00
KN-L5-401-450-250	401-450	\$11.50	KN-L5-Z-250	Z	\$12.00	KN-L5-401-450	401-450	\$22.00	KN-L5-Z	Z	\$22.50
KN-L5-451-500-250	451-500	\$11.50	KN-L5-POS-250	+	\$11.50	KN-L5-451-500	451-500	\$22.00	KN-L5-POS	+	\$22.00
KN-L5-L1-250	L1	\$11.50	KN-L5-NEG-250	-	\$11.50	KN-L5-L1	L1	\$22.00	KN-L5-NEG	-	\$22.00
KN-L5-L2-250	L2	\$11.50	KN-L5-GND-250	GND	\$11.50	KN-L5-L2	L2	\$22.00	KN-L5-GND	GND	\$22.00
KN-L5-L3-250	L3	\$11.50				KN-L5-L3	L3	\$22.00			

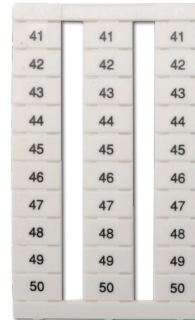


KONNECT-IT Accessories

Marking Tags 6.5 x 10mm

Use with any KONNECT-IT series terminal blocks 6.5mm or wider.

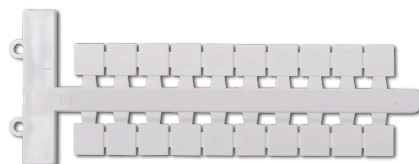
6.5 x 10mm Marking Tags Ordering Information			
Part Number	Description	Qty	Price
<u>KN-L6P5-BLNK-250</u>	Blank	250	\$30.00
<u>KN-L6P5-1-10-250</u>	Numbered 1-10	250	\$31.50
<u>KN-L6P5-11-20-250</u>	Numbered 11-20	250	\$31.50
<u>KN-L6P5-21-30-250</u>	Numbered 21-30	250	\$31.50
<u>KN-L6P5-31-40-250</u>	Numbered 31-40	250	\$31.50
<u>KN-L6P5-41-50-250</u>	Numbered 41-50	250	\$31.50
<u>KN-L6P5-51-60-250</u>	Numbered 51-60	250	\$31.50
<u>KN-L6P5-61-70-250</u>	Numbered 61-70	250	\$31.50
<u>KN-L6P5-71-80-250</u>	Numbered 71-80	250	\$31.50
<u>KN-L6P5-81-90-250</u>	Numbered 81-90	250	\$32.00
<u>KN-L6P5-91-100-250</u>	Numbered 91-100	250	\$32.00
<u>KN-L6P5-BLNK</u>	Blank	500	\$56.00
<u>KN-L6P5-1-10</u>	Numbered 1-10	500	\$57.00
<u>KN-L6P5-11-20</u>	Numbered 11-20	500	\$57.00
<u>KN-L6P5-21-30</u>	Numbered 21-30	500	\$57.00
<u>KN-L6P5-31-40</u>	Numbered 31-40	500	\$57.00
<u>KN-L6P5-41-50</u>	Numbered 41-50	500	\$57.00
<u>KN-L6P5-51-60</u>	Numbered 51-60	500	\$57.00
<u>KN-L6P5-61-70</u>	Numbered 61-70	500	\$57.00
<u>KN-L6P5-71-80</u>	Numbered 71-80	500	\$57.00
<u>KN-L6P5-81-90</u>	Numbered 81-90	500	\$58.00
<u>KN-L6P5-91-100</u>	Numbered 91-100	500	\$58.00



Marking Tags 5 x 10mm, 6 x 10mm, 10 x 10mm

Marking Tags Ordering Information			
Part Number*	Description	Qty	Price
<u>KN-L5X-BLNK-220</u>	Blank marking tag, 5x10mm, use with any Konnect-It terminal block series	220	\$10.50
<u>KN-L6X-BLNK-180</u>	Blank marking tag, 6x10mm, use with any Konnect-It terminal block 6mm or wider	180	\$9.75
<u>KN-L10X-BLNK-100</u>	Blank marking tag, 10x10mm, use with any Konnect-It terminal block 10mm or wider	100	\$14.50
<u>KN-L5X-BLNK</u>	Blank marking tag, 5x10mm, use with any Konnect-It terminal block series	440	\$19.50
<u>KN-L6X-BLNK</u>	Blank marking tag, 6x10mm, use with any Konnect-It terminal block 6mm or wider	360	\$18.50
<u>KN-L10X-BLNK</u>	Blank marking tag, 10x10mm, use with any Konnect-It terminal block 10mm or wider	200	\$26.50

*Does not fit any KN-T1/0xx or [KN-G1/0](#) series block



DINnectors[®] Accessories

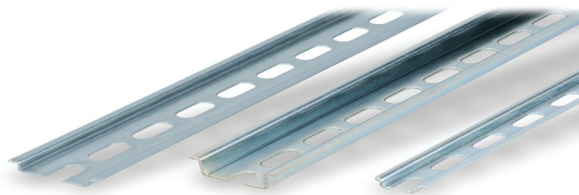
Steel DIN Rails Features

35mm wide

- Available in 1-meter lengths
- 7.5 mm-high rails primarily used to mount terminal blocks, relays, timers and small PLCs such as the BRX, CLICK, DirectLogic and Productivity series. 15mm-high rails for mounting larger and heavier components such as contactors and larger PLCs

15mm wide

- Available in 1-meter lengths
- DN-R15S1 exclusively for mounting mini terminal blocks such as the DN-M10-A



Steel DIN Rails Specifications									
	Part Number	Qty	Price	Part Number	Qty	Price	Part Number	Qty	Price
DIN Rail	<u>DN-R35S1</u>	10	\$39.00	<u>DN-R35HS1</u>	10	\$68.00	<u>DN-R15S1</u>	10	\$36.00
	<u>DN-R35S1-2</u>	2	\$11.00	<u>DN-R35HS1-2</u>	2	\$16.50	<u>DN-R15S1-2</u>	2	\$10.00
Description	DINnector DIN rail, slotted, 35mm, 7.5mm height, 1m length, plated steel. Package of 10.			DINnector DIN rail, slotted, 35mm, 15mm height, 1m length, plated steel. Package of 10.			DINnector DIN rail, slotted, 15mm, 5.5mm height, 1m length, plated steel. Package of 2.		
Plating	Zinc-plated and chromated								
International Standards	EN 60715, RoHs								
Suggested Mounting Screw Type	M6			M6			M4		

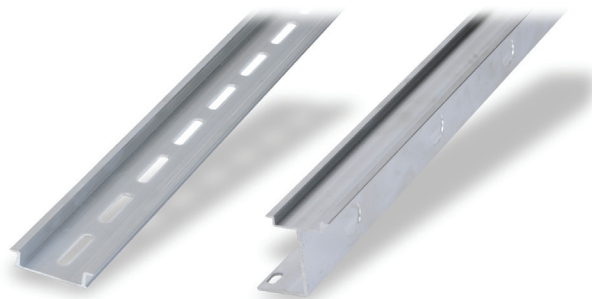
Aluminum DIN Rail Features

35mm wide

- Non-anodized finish
- Zinc plating and passivation (minimum thickness 6 microns)
- Lightweight, easy to cut and deburr
- Terminal blocks only
- Maximum mounting screw #10-32 or M5
- Available in 1-meter lengths

35mm wide raised

- Non-anodized finish
- Zinc plating and passivation (minimum thickness 6 microns)
- Enables users to raise terminal blocks 2¼" above the back panel
- Terminal blocks only
- Available in 1-meter lengths
- Bushing or grommet recommended for wire access hole (example Heyco UB-875 not sold by ADC)



Aluminum DIN Rails Specifications						
	Part Number	Qty	Price	Part Number	Qty	Price
DIN Rail	<u>DN-R35SAL1</u>	10	\$60.00	<u>DN-R35SAL2-2</u>	2	\$38.00
	<u>DN-R35SAL1-2</u>	2	\$16.00			
Description	DINnector DIN rail, slotted, 35mm, 10mm height, 1m length, aluminum. Package of 10.			DINnector DIN rail, slotted, 2in raised 35mm, 7.5mm height, 1m length, aluminum. Package of 2.		
Plating	Galvanic zinc plating, non-anodized finish					
International Standards	DIN 50960, RoHs					
Suggested Mounting Screw Type	#10-32 or M5					

DINnectors Accessories

DIN rail support brackets

- Angled support brackets raise and tilt mounting rails 30 degrees from mounting surface for easier wiring
- [DN-ASB1](#) plated steel support bracket
- [DN-ASB2-10](#) cold-rolled steel treated with galvanic zinc plating and passivation

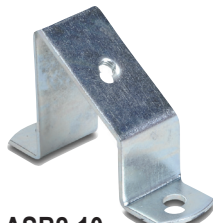
DIN rail mounting clips

- Snap small devices not made for mounting onto 35mm DIN rails
- Zinc plated steel

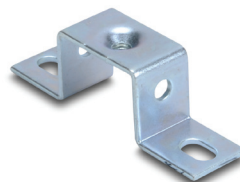
DIN Rail Support Brackets and Mounting Clips			
Part Number	Description	Qty	Price
DN-ASB1	30° angled DIN rail support bracket (M6-1.0 screws not included)	50	\$107.00
DN-ASB2-10	30° angled DIN rail support bracket (M6-1.0 screws included)	10	\$18.00
DN-SSB25-10	1" (25mm) DIN rail support bracket (M6-1.0 screws included)	10	\$24.50
DN-SSB50-10	2" (50mm) DIN rail support bracket (M6-1.0 screws included)	10	\$25.50
DN-SSB70-10	2.75" (70mm) DIN rail support bracket (M6-1.0 screws included)	10	\$32.00
DN-SSB90-10	3.5" (90mm) DIN rail support bracket (M6-1.0 screws included)	10	\$34.50
DN-CLIP-FM4	DIN rail mounting clip with M4 x 0.7 mm threaded hole (Screws not included)	40	\$66.00
DN-CLIP-FM4-5		5	\$9.50
DN-CLIP-FM5	DIN rail mounting clip with M5 x 0.8 mm threaded hole (Screws not included)	40	\$66.00
DN-CLIP-FM5-5		5	\$9.50



[DN-ASB1](#)



[DN-ASB2-10](#)



[DN-SSB25-10](#)



[DN-SSB50-10](#)



[DN-SSB70-10](#)



[DN-SSB90-10](#)



[DN-CLIP-FM4](#)
[DN-CLIP-FM4-5](#)



[DN-CLIP-FM5](#)
[DN-CLIP-FM5-5](#)