

# **Knockout Punches**

## Knockout Punches

RUKO's knockout punch hole-cutting tool includes punch, die and draw bolt (without ball bearing). Use for sheet steel, stainless-steel sheets, non-ferrous and light metals, and plastics. Replacement bolts are offered in three of the most popular sizes.

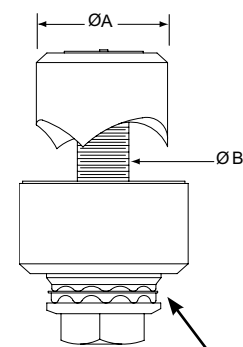
## Features

- Cuts holes in thin materials quickly, easily, cleanly and without burrs.
- 3-point cut ensures less deformation of the punched parts, preventing damage to the draw-in bolt.
- The optional ball bearing between draw-in bolt and die plate makes handling simpler and quicker, reducing the force required by approx. 67% (replacement bolt part numbers, [103110K](#), [103112K](#), and [103116K](#)).
- The metric draw-in bolts are of the highest quality and are designed for extreme loads. If lost, they can be replaced for short periods of time by standard metric fine threaded bolts.



**109220**

Knockout Punches							
Part #	Pcs/Pkg	Price	Description	Actual Hole Size (Ø A)	Draw Bolt Size (Ø B)	Trade Hole Size	Works With
<a href="#">109220</a>	1	\$28.50	Knockout punch hole-cutting tool	22 mm	M10	22 mm	<a href="#">101703</a> , <a href="#">103110K</a>
<a href="#">109225</a>	1	\$27.00		22.5 mm	M10	22.5 mm	<a href="#">101703</a> , <a href="#">103110K</a>
<a href="#">109300</a>	1	\$37.00		30 mm	M12	30 mm	<a href="#">101703</a> , <a href="#">103112K</a>
<a href="#">109305</a>	1	\$34.50		30.5 mm	M12	30.5 mm	<a href="#">101703</a> , <a href="#">103112K</a>
<a href="#">1097012</a>	1	\$28.50		0.875 inch	M10	1/2 inch	<a href="#">101703</a> , <a href="#">103110K</a> <a href="#">RPS-16G</a> , <a href="#">RPS-16K</a> , <a href="#">CUR-16G</a> , <a href="#">CUR-16K</a>
<a href="#">1097034</a>	1	\$31.50		1.115 inch	M12	3/4 inch	<a href="#">101703</a> , <a href="#">103112K</a> <a href="#">RPS-20G</a> , <a href="#">RPS-20K</a> , <a href="#">CUR-20G</a> , <a href="#">CUR-20K</a>
<a href="#">1097010</a>	1	\$39.00		1.362 inch	M12	1 inch	<a href="#">101703</a> , <a href="#">103112K</a> , <a href="#">RPS-25G</a> , <a href="#">RPS-25K</a> , <a href="#">CUR-25G</a> , <a href="#">CUR-25K</a>
<a href="#">1097114</a>	1	\$46.00		1.6875 inch	M16	1-1/4 inch	<a href="#">101703</a> , <a href="#">103116K</a> , <a href="#">RPS-32G</a> , <a href="#">RPS-32K</a> , <a href="#">CUR-32G</a> , <a href="#">CUR-32K</a>
<a href="#">1097112</a>	1	\$56.00		1.9375 inch	M16	1-1/2 inch	<a href="#">101703</a> , <a href="#">103116K</a>
<a href="#">1097020</a>	1	\$59.00		2.375 inch	M16	2 inch	<a href="#">101703</a> , <a href="#">103116K</a>
Replacement Draw Bolts							
<a href="#">103110K</a>	1	\$23.00	M10 replacement bolt with ball-bearing bushing	22 mm, 22.5 mm 1/2 inch		<a href="#">109220</a> , <a href="#">109225</a> , <a href="#">1097012</a>	
<a href="#">103112K</a>	1	\$25.00	M12 replacement bolt with ball-bearing bushing	30 mm, 30.5 mm 3/4 to 1 inch		<a href="#">109300</a> , <a href="#">109305</a> , <a href="#">1097034</a> , <a href="#">1097010</a>	



Ball bearing only available with replacement draw bolts P/N 103110K, 103112K

Note: Part number [109225](#) is recommended when punching holes for 22mm pilot devices.

Part number [109305](#) is recommended when punching holes for 30mm pilot devices

Hole Punch Recommendations					
Draw-In Bolt	Sheet Steel	Pilot Hole Ø	Stainless Steel Sheets	Non-Ferrous/Light Metals	Plastics
<b>M8 x 1.0 mm</b>	14 Ga, 2 mm	7/16"	18 Ga, 1 mm	8 Ga, 4 mm	8 Ga, 4 mm
<b>M10 x 1.0 mm</b>	14 Ga, 2 mm	9/16"	18 Ga, 1 mm	8 Ga, 4 mm	8 Ga, 4 mm
<b>M12 x 1.5 mm</b>	11 Ga, 3 mm	19/32"	14 Ga, 2 mm	8 Ga, 4 mm	8 Ga, 4 mm
<b>M16 x 1.5 mm</b>	11 Ga, 3 mm	3/4"	14 Ga, 2 mm	8 Ga, 4 mm	8 Ga, 4 mm