

KILLARK SWB/XCS Series Control Stations

Overview - External Sealing Required



Listings

- UL Listed; File E53360
- Class I, Div. 1 & 2, Groups C, D
- Class II, Div. 1 & 2, Groups E, F, G
- Class III
- NEMA 7 (C, D) 9 (E, F, G)
- CSA Certified; File LR11714
- Class I, Zones 1 & 2, Groups IIB, IIA



Applications

- Hazardous locations due to the presence of flammable gases or vapors, combustible dusts or easily ignitable fibers or flyings
- Installations at petroleum refineries, chemical and petrochemical plants and other processing or storage facilities where similar hazards exist
- Use in conjunction with magnetic starters or contactors for remote control of motors

Features

- Device bodies and covers are cast copper-free Aluminum alloy and provide a wide assortment for custom assemblies
- Cast conduit hubs, 3/4", either dead end or feed through standard in both single and two-gang device bodies
- Ground flange joint between bolted cover and box provide required flame path
- Pushbutton, selector switches and pilot light bodies are copper-free aluminum
- Operating shaft in both pushbuttons and selector switches are stainless steel
- Open space between gangs for easy wiring from one cover to another
- Miniature and standard size pushbuttons. (miniature 3/4" overall diameter, standard 1 3/8" overall diameter)
- Internal ground screw

Contact Specifications

All contacts are break before make.
Replacement contacts are not available for any of our Killark hazardous duty controls.

| AC Ratings | | | | |
|------------|---------|---------|---------|---------|
| Current | 120 VAC | 240 VAC | 480 VAC | 600 VAC |
| Inrush | 60 | 30 | 15 | 12 |
| Breaking | 6 | 3 | 1.5 | 1.2 |
| Carrying | 10 | 10 | 10 | 10 |

| DC Ratings (Max. Amps) | | |
|------------------------|---------|---------|
| Current | 125 VDC | 250 VDC |
| Inrush | 0.55 | 0.275 |
| Breaking | 0.55 | 0.275 |
| Carrying | 2.50 | 2.5 |

| XCS Specifications | |
|-------------------------------------------|--------------------------------------------------------------------------------------------------------------------------------------------------|
| Dielectric Strength | 2.5 kV (1 minute) |
| Electrical Endurance | 5 million operations at rated load |
| Operating Frequency | 3,000 per hour |
| Mechanical Endurance | Momentary: 5×10^6 Push-pull and selector: 2×10^6 |
| LED Consumption | 4-6 mA at 110 to 130 VAC/VDC |
| Electrical Connections | 14 to 20 AWG max., solid or stranded |
| Terminal Torque | 1.8 Nm (15.75 in-lbs) |
| Lamp Connections | 9 inch leads, 18 AWG |
| Operating Temperature | -4 to 104°F (-20 to 40°C) |
| Device Bodies and Covers Materials | Copper-free Aluminum |
| Cover Bolts Material | 1/4-20 x 7/8 inch Stainless Steel |
| Bolt Tightening Torque | After tightly attaching cover to device box, check with a 0.0015 inch feeler gauge; it should not enter the flame path joint more than 1/8 inch. |

KILLARK XCS Series Cover Assemblies and Control Stations - Pushbuttons

Pushbuttons and Pushbutton/Pilot Light Assemblies



Single Pushbutton



Double Pushbutton

Push-Pull Mushroom
Maintained Pushbutton

Listings

- UL Listed; File E53360
- Class I, Div. 1 & 2, Groups C, D
- Class II, Div. 1 & 2, Groups E, F, G
- Class III
- NEMA 7 (C, D) 9 (E, F, G)
- CSA Certified; File LR11714
- Class I, Zones 1 & 2, Groups IIB, IIA



XCS Momentary Contact Single Pushbutton

| Part Number (cover included) | Price | Drawing Link | Description | Diagram | Pushbutton Color | Nameplate Marking* |
|---------------------------------|----------|---------------------|---------------------------|---------|------------------|--------------------|
| XCS-0B1 | \$201.00 | PDF | 1 N.O. momentary | | Green | "START" |
| XCS-0B2 | \$201.00 | PDF | 1 N.C. momentary | | Red | "STOP" |
| XCS-0B3 | \$238.00 | PDF | 1 N.O. / 1 N.C. momentary | | Black | Blank plate |

XCS Momentary Contact Double Pushbutton

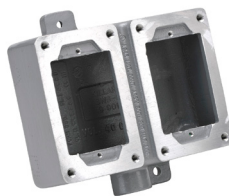
| Part Number (cover included) | Price | Drawing Link | Description | Diagram | Pushbutton Colors | Legend Plate Marking* |
|---------------------------------|----------|---------------------|-------------------------------------------------------------------------------------------|---------|-------------------|--------------------------|
| XCS-0B4 | \$264.00 | PDF | Green operator has 1 N.O. momentary contact and red operator has 1 N.C. momentary contact | | Green Red | "START STOP" |
| XCS-0B4-U | \$342.00 | PDF | Each operator has 1 N.O. and 1 N.C. momentary contact | | Green Red | "START STOP" |
| XCS-0B5 | \$264.00 | PDF | Each operator has 1 N.O. momentary contact | | Green Green | "START START" |
| XCS-0B7 | \$341.00 | PDF | Each operator has 1 N.O. and 1 N.C. momentary contact | | Black Black | Two blank plates |

XCS Maintained Contact Push-Pull Mushroom Pushbutton

| Part Number (cover included) | Price | Drawing Link | Description | Diagram | Pushbutton Color | Legend Plate Marking* |
|---------------------------------|----------|---------------------|--------------------------------------|---------|---------------------|------------------------------------------------------------------------------------------------------|
| XCS-0MMG3 | \$647.00 | PDF | 1 N.O. / 1 N.C. push-pull maintained | | Green | Three 2-sided legend plates included: "STOP / STOP"; "EMERGENCY STOP / RESET"; Blank plate / "RESET" |
| XCS-0MMR3 | \$604.00 | PDF | 1 N.O. / 1 N.C. push-pull maintained | | Red | Three 2-sided legend plates included: "STOP / STOP"; "EMERGENCY STOP / RESET"; Blank plate / "RESET" |
| XCS-0MMK3 | \$647.00 | PDF | 1 N.O. / 1 N.C. push-pull maintained | | Black | Three 2-sided legend plates included: "STOP / STOP"; "EMERGENCY STOP / RESET"; Blank plate / "RESET" |

* We also offer a large selection of optional legend plates. See accessories later in this section.

KILLARK SWB Series Splice/Device Boxes For Use With XCS Cover Assemblies

**SWB-2****SWB-5****SWB-8****SWB-11****SWB-42**

Listings

- UL Listed; File E53360
- Class I, Div. 1 & 2, Groups C, D
- Class II, Div. 1 & 2, Groups E, F, G
- Class III
- NEMA 7 (C, D) 9 (E, F, G)
- CSA Certified; File LR11712
- Class I, Zones 1 & 2, Groups IIB, IIA



SWB Device Bodies

| <i>Part Number</i> | <i>Price</i> | <i>Drawing Link</i> | <i>Description</i> | <i>Hub Size (inches)</i> |
|----------------------|--------------|---------------------|-----------------------------------------|--------------------------|
| <u>SWB-2</u> | \$66.00 | PDF | Single gang / Dead-end | 3/4 |
| <u>SWB-5</u> | \$67.00 | PDF | Single gang / Feed-through | 3/4 |
| <u>SWB-8</u> | \$129.00 | PDF | Double gang / Dead-end | 3/4 |
| <u>SWB-11</u> | \$128.00 | PDF | Double gang / Feed-through | 3/4 |
| <u>SWB-42</u> | \$187.00 | PDF | Single gang / Dead-end / Deep style | 3/4 |
| <u>SWB-45</u> | \$230.00 | PDF | Single gang / Feed-through / Deep style | 3/4 |