



# MTR, MTR2, MTRJ Series AC Motor Accessories – 1-Phase

## 56C/56HC Frame TEFC Motors – 1-phase – 0.33 to 2 hp – Motor Accessories

### Start Capacitors

1-phase motors use capacitors to provide starting torque when power is first applied to the motor. AutomationDirect offers *spare/replacement* starting capacitors for our 1-phase IronHorse motors.

### Run Capacitors

In addition to the start capacitors and centrifugal switches, IronHorse 1-1/2 and 2 hp 1-phase motors also have run capacitors which allow the motors to develop higher running torque, greater efficiency, and improved power factor. We offer *spare/replacement* run capacitors for 1-phase IronHorse motors.

### Centrifugal Switches

The start capacitors are no longer needed once the motors begin turning, so they are then taken out of the circuit by a centrifugal switch. We also offer *spare/replacement* switches for our motors.

### Stationary Switches

MTR2 series motors have a separate stationary switch that works with the centrifugal switch; both switches are required.

(MTR series motors have only the one centrifugal switch.)



**Junction Box**  
**MTAR-JBOX-56**



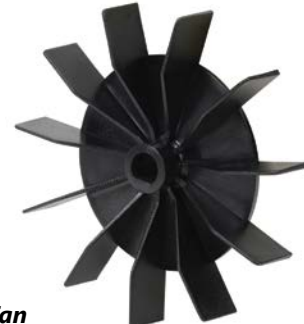
**Junction Box**  
**MTA2-JBOX-56**



**Start Capacitor**  
**MTA-CAP-02**     **Run Capacitor**  
**MTA-CAP-06**



**Fan**  
**MTAR-FAN-56**



**Fan**  
**MTA2-FAN-56**



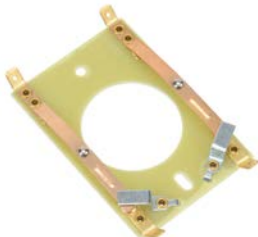
**Centrifugal Switch**     **MTA-CSW-01**



**Fan Shroud**  
**MTAR-SHROUD-56**



**Fan Shroud**  
**MTA2-SHROUD-56**



**Stationary Switch**  
**MTA-CSW-04**



**Motor Base**  
**MTAR-BASE-56**



**Motor Base**  
**MTA2-BASE-56**



# AC Motor Accessories – 1-Phase

## 56C/56HC Frame TEFC Motors – 1-phase – 0.33 to 2 hp – Motor Accessories

MTR Series 1-phase Motor Spare/Replacement Parts (NOT for MTR2 Motors)*								
Part Number	Price	Accessory Type	Capacitance (µF)	Rated Voltage	Dimension Height x Ø (in [mm])	Applicable MTR Motor Number	MTR Motor HP : RPM	
<a href="#">MTA-CAP-01</a>	\$12.50	start capacitor	200	165	3.15 x 1.65 [80.0 x 41.9]	<a href="#">MTR-P33-1AB18</a>	1/3 : 1800	
<a href="#">MTA-CAP-02</a>	\$12.50	start capacitor	250			<a href="#">MTR-P50-1AB18</a>	1/2 : 1800	
<a href="#">MTA-CAP-03</a>	\$12.50	start capacitor	300			<a href="#">MTR-P75-1AB18</a>	3/4 : 1800	
<a href="#">MTA-CAP-08</a>	\$12.50	start capacitor	400			<a href="#">MTR-001-1AB18</a>	1 : 1800	
<a href="#">MTA-CAP-09</a>	Retired	run capacitor	35		4.0 x 1.8 [101 x 45]	<a href="#">MTR-1P5-1AB36</a>	1-1/2 : 3600	
<a href="#">MTA-CSW-01</a>	Retired	centrifugal switch	n/a	250	n/a	<a href="#">MTR-xxx-1AB18</a>	all 1800 rpm	
<a href="#">MTA-CSW-02</a>	Retired					<a href="#">MTR-1P5-1AB36</a>	all 3600 rpm	
<a href="#">MTAR-BASE-56</a>	\$14.50	motor base		n/a		n/a	MTR-xxx-1ABxx	all
<a href="#">MTAR-FAN-56</a>	Retired	fan						
<a href="#">MTAR-JBOX-56</a>	Retired	junction box						
<a href="#">MTAR-SHROUD-56</a>	\$14.50	fan shroud						

\* These accessories are spare/replacement components only for MTR series IronHorse motors.  
Accessories for MTR series motors are not compatible with MTR2 series motors.

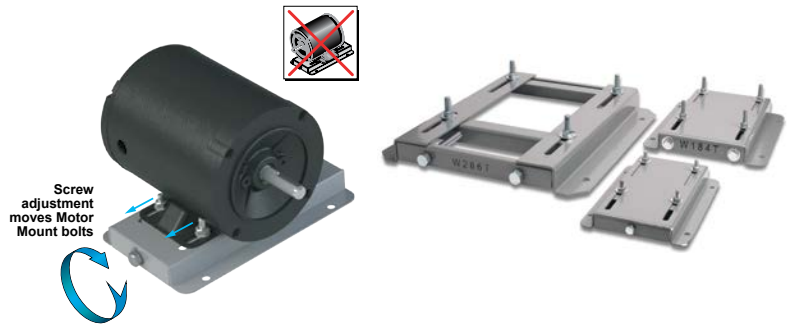
MTR2 Series 1-phase Motor Spare/Replacement Parts (NOT for MTR Motors)*								
Part Number	Price	Accessory Type	Capacitance (µF)	Rated Voltage	Dimension Height x Ø (in [mm])	Applicable MTR2/MTRJ Motor Number	MTR2/MTRJ Motor HP : RPM	
<a href="#">MTA-CAP-10</a>	\$23.50	start capacitor	200	165	2.80 x 1.46 [71.1 x 37.1]	<a href="#">MTR2-P33-1AB36</a>	1/3 : 3600	
<a href="#">MTA-CAP-11</a>	\$25.00	start capacitor	300			<a href="#">MTRJ-001-1AB36J</a>	1 : 3600	
<a href="#">MTA-CAP-12</a>	\$26.50	start capacitor	400			<a href="#">MTR2-P33-1AB18</a>	1/3 : 1800	
<a href="#">MTA-CAP-13</a>	\$38.00	start capacitor	500			<a href="#">MTR2-P50-1AB36</a>	1/2 : 3600	
<a href="#">MTA-CAP-14</a>	\$38.00	run capacitor	40	250	3.38 x 1.81 [85.9 x 46.0]	<a href="#">MTRJ-1P5-1AB36J</a>	1 1/2 : 3600	
<a href="#">MTA-CAP-15</a>	\$67.00	start capacitor	800	165	4.41 x 1.85 [112.0 x 47.0]	<a href="#">MTR2-002-1AB36</a>	2 : 3600	
<a href="#">MTA-CAP-22</a>	\$72.00	start capacitor	900	165	4.375 x 1.8125 [111.1 x 46.0]	<a href="#">MTR2-001-1AB36</a>	1 : 3600	
<a href="#">MTA-CAP-31</a>	\$21.00	start capacitor	150	165	3.39 x 1.85 [86.1 x 47.0]	<a href="#">MTR2-002-1AB36</a>	2 : 3600	
<a href="#">MTA-CSW-03</a>	\$19.00	centrifugal switch	n/a	125	n/a	<a href="#">MTR2-P50-1AB18</a>	1/2 : 1800	
<a href="#">MTA-CSW-04</a>	\$19.00	stationary switch				<a href="#">MTR2-P75-1AB36</a>	3/4 : 3600	
<a href="#">MTA-CSW-08</a>	\$19.00	centrifugal switch				<a href="#">MTRJ-002-1AB36J</a>	2 : 3600	
<a href="#">MTA2-BASE-56</a>	\$22.00	motor base		n/a		n/a	<a href="#">MTR2-P75-1AB18</a>	3/4 : 1800
<a href="#">MTA2-FAN-56</a>	\$22.00	fan					<a href="#">MTR2-001-1AB18</a>	1 : 1800
<a href="#">MTA2-JBOX-56</a>	\$22.00	junction box					<a href="#">MTR2-001-1AB36</a>	1 : 3600
<a href="#">MTA2-SHROUD-56</a>	\$22.00	fan shroud	<a href="#">MTR2-xxx-1AB36</a>		all 3600 rpm			
						<a href="#">MTR2-xxx-1ABxx</a>	all	
						<a href="#">MTR2-xxx-1AB18</a>	all 1800 rpm	

\* These accessories are spare/replacement components only for MTR2 series IronHorse motors.  
Accessories for MTR2 series motors are not compatible with MTR series motors.

# STABLE™ Motor Slide Bases

## Mounting Slide Bases for 56 to 449T NEMA Motors Features

- Allows adjustment of motor mounting position
- Slide direction is perpendicular to motor shaft
- Double adjusting screws for frames 182T-449T
- Manufactured to precise dimensional standards
- Dimensionally interchangeable with existing major makes
- Heavy-duty steel construction
- Painted with oven-baked primer for better adhesion of customer's paint
- All "D" bolts (motor mounting bolts) are fixed to the exact motor foot pattern
- All "D" bolts are welded into position to prevent spinning and dropping from slots
- Nuts and washers are provided for securing the motor to the slide base



### STABLE Motor Slide Bases for 3-Phase Motors

Part Number (MTA-BASE-xxx)	Price	Fits Frame Type	Product Wt. (lb)	Fits Motor					Drawing Links		
				IronHorse	Leeson®	WEG (Part number ending in...)	Marathon				
					WashGuard®		microMAX, Max +, Black Max, Blue Max, SyMAX	XRI GP & NEMA Premium, Jet Pump		Globetrotter	
<b>W56</b>	\$14.00	56*	2.8	MTPM-P3x-1x18							
				MTPM-P5x-1x18							
				MTPM-P7x-1x18							
				MTPM-0xx-1x18							
				MTPM-1xx-1x18							
				MTR(2)(P)-xxx-xxxxx*							
				MTRJ(P)-xxx-xxxxx							
				MTSN-P33-3BD18							
				<a href="#">MTSN-P33-3BD18R</a>							
				<a href="#">MTSN-P33-3BD36</a>	112427.00						
				<a href="#">MTSN-P33-3BD36</a>	112428.00						
				<a href="#">MTSP-P33-3BD18</a>	112429.00						
				<a href="#">MTSP-P33-3BD18R</a>	112430.00						
				<a href="#">MTSP-P33-3BD36</a>	113019.00						
				<a href="#">MTSP-P33-3BD36R</a>	113023.00						
				<a href="#">MTSN-P50-3BD18</a>	113473.00						
				<a href="#">MTSN-P50-3BD18R</a>	113586.00						E2000
				<a href="#">MTSN-P50-3BD36</a>	113590.00						D390
				<a href="#">MTSP-P50-3BD12</a>	113591.00						G580
				<a href="#">MTSP-P50-3BD18</a>	113649.00						D391
				<a href="#">MTSP-P50-3BD18R</a>	116644.00						G581
				<a href="#">MTSP-P50-3BD36</a>	116645.00						K705
				<a href="#">MTSP-P50-3BD36R</a>	119468.00						D392
				<a href="#">MTSN-P75-3BD18</a>	119469.00						G582
				<a href="#">MTSN-P75-3BD18R</a>	119471.00						K707
				<a href="#">MTSN-P75-3BD36</a>	119475.00						D393A
				<a href="#">MTSP-P75-3BD12</a>	119476.00			(...)56-S			K708A
				<a href="#">MTSP-P75-3BD18</a>	119478.00			(...)56C-S			G583A
				<a href="#">MTSP-P75-3BD18R</a>	119480.00						K709A
				<a href="#">MTSP-P75-3BD36</a>	119482.00						D394A
				<a href="#">MTSP-P75-3BD36R</a>	119483.00						K721A
				<a href="#">MTSN-001-3BD18</a>	191202.00						G584A
				<a href="#">MTSN-001-3BD18R</a>	191204.00						D395A
				<a href="#">MTSN-001-3BD36</a>	191205.00						G585A
				<a href="#">MTSP-001-3BD18</a>	191206.00						K724A
				<a href="#">MTSP-001-3BD18R</a>	191207.00						D396A
				<a href="#">MTSP-001-3BD36</a>	191208.00						K725A
				<a href="#">MTSP-001-3BD36R</a>	191560.00						J066A
				<a href="#">MTSN-1P5-3BD18</a>	191561.00						
				<a href="#">MTSN-1P5-3BD18R</a>	191562.00						
<a href="#">MTSN-1P5-3BD36</a>	191563.00										
<a href="#">MTSP-1P5-3BD18</a>	191564.00										
<a href="#">MTSP-1P5-3BD18R</a>	191569.00										
<a href="#">MTSP-1P5-3BD36</a>											
<a href="#">MTSP-1P5-3BD36R</a>											
<a href="#">MTSN-002-3BD18</a>											
<a href="#">MTSN-002-3BD18R</a>											
<a href="#">MTSN-002-3BD36</a>											
<a href="#">MTSP-002-3BD18</a>											
<a href="#">MTSP-002-3BD18R</a>											
<a href="#">MTSP-002-3BD36</a>											
<a href="#">MTSP-002-3BD36R</a>											

\* IronHorse MTR2 56HC motors have double-punched bases to fit on slide base MTA-BASE-W56.

# STABLE™ Motor Slide Bases

STABLE Motor Slide Bases for 3-Phase Motors										
Part Number (MTA-BASE-xxx)	Price	Fits Frame Type	Product Wt. (lb)	Fits Motor						Drawing Links
				IronHorse	Leeson®	WEG (Part number ending in...)	Marathon			
					WashGuard®		microMAX, Max+, Black Max, Blue Max, SyMAX	XRI GP & NEMA Premium, Jet Pump	Globetrotter	
<a href="#">W143T</a>	\$26.00	143T/TC	4.6	<a href="#">MTCP2-001-3BD18(C)</a> <a href="#">MTCP2-1P5-3BD36</a> <a href="#">MTSN-1P5-3BD36-14</a> <a href="#">MTSP-1P5-3BD36-14</a> <a href="#">MTSP-1P5-3BD36R-14</a>	<a href="#">191487.00</a> <a href="#">191565.00</a>		<a href="#">Y536(-A772)</a>	<a href="#">E2001A</a> <a href="#">E2003</a>	-	<a href="#">PDF</a>
<a href="#">W145T</a>	\$26.00	145T/TC	5.1	<a href="#">MTCP2-001-3BD12</a> <a href="#">MTCP2-1P5-3BD18(C)</a> <a href="#">MTCP2-002-3BD18(C)</a> <a href="#">MTCP2-002-3BD36</a> <a href="#">MTSP-001-3BD12</a> <a href="#">MTSN-1P5-3BD18-14</a> <a href="#">MTSN-1P5-3BD18R-14</a> <a href="#">MTSP-1P5-3BD18-14</a> <a href="#">MTSP-1P5-3BD18R-14</a> <a href="#">MTSN-002-3BD18-14</a> <a href="#">MTSN-002-3BD18R-14</a> <a href="#">MTSN-002-3BD36-14</a> <a href="#">MTSP-002-3BD18-14</a> <a href="#">MTSP-002-3BD18R-14</a> <a href="#">MTSP-002-3BD36-14</a> <a href="#">MTSP-002-3BD36R-14</a>	<a href="#">121866.00</a> <a href="#">121868.00</a> <a href="#">121870.00</a> <a href="#">122182.00</a> <a href="#">122184.00</a> <a href="#">122185.00</a> <a href="#">191490.00</a> <a href="#">191491.00</a> <a href="#">191570.00</a>	(...)145T-S (...)145TC-S	<a href="#">Y366</a> <a href="#">Y368</a> <a href="#">Y284</a> <a href="#">Y285</a> <a href="#">Y537</a> <a href="#">Y538(-A772)</a> <a href="#">Y551(-A772)</a>	<a href="#">E2002</a> <a href="#">E2004A</a> <a href="#">E2007A</a>	-	<a href="#">PDF</a>
<a href="#">W182T</a>	\$35.50	182T/TC	9.2	<a href="#">MTCP2-1P5-3BD12</a> <a href="#">MTCP2-003-3BD18(C)</a> <a href="#">MTCP2-003-3BD36</a> <a href="#">MTSP-1P5-3BD12</a> <a href="#">MTSN-003-3BD18-18</a> <a href="#">MTSN-003-3BD36-18</a> <a href="#">MTSP-003-3BD18-18</a> <a href="#">MTSP-003-3BD36-18</a>	<a href="#">132196.00</a> <a href="#">132198.00</a>		<a href="#">Y1999</a> <a href="#">Y286A</a> <a href="#">Y541A(-A772)</a> <a href="#">SY036</a> <a href="#">SY066</a>	<a href="#">E2009</a> <a href="#">E2010</a>	<a href="#">GT0010A</a> <a href="#">GT1010A</a>	<a href="#">PDF</a>
<a href="#">W184T</a>	\$35.50	184T/TC	10	<a href="#">MTCP2-002-3BD12</a> <a href="#">MTCP2-005-3BD18(C)</a> <a href="#">MTCP2-005-3BD36</a> <a href="#">MTF-00x-1C18</a> <a href="#">MTSP-002-3BD12</a> <a href="#">MTSP-005-3BD18</a> <a href="#">MTSP-005-3BD36</a>	<a href="#">132197.00</a> <a href="#">132200.00</a> <a href="#">132201.00</a> <a href="#">132440.00</a>		<a href="#">Y1372</a> <a href="#">Y287A</a> <a href="#">Y540(-A772)</a> <a href="#">Y543A(-A772)</a> <a href="#">E2012</a> <a href="#">E2013</a> <a href="#">SY007A</a> <a href="#">SY067</a>	-	<a href="#">GT0013A</a> <a href="#">GT1013A</a> <a href="#">GT1210A</a> <a href="#">GT1212A</a> <a href="#">GT1213A</a>	<a href="#">PDF</a>
<a href="#">W213T</a>	\$52.00	213T/TC	13	<a href="#">MTCP2-003-3BD12</a> <a href="#">MTCP2-7P5-3BD18(C)</a> <a href="#">MTCP2-7P5-3BD36</a> <a href="#">MTSP-003-3BD12</a> <a href="#">MTSP-7P5-3BD18</a>	<a href="#">140819.00</a> <a href="#">140822.00</a> <a href="#">141266.00</a>		<a href="#">Y994</a> <a href="#">Y542(-A772)</a> <a href="#">Y545(-A772)</a> <a href="#">E2011</a> <a href="#">E2016A</a> <a href="#">E2011A</a> <a href="#">E2016B</a> <a href="#">SY068</a>	-	<a href="#">GT0016A</a> <a href="#">GT1016A</a> <a href="#">GT1216A</a>	<a href="#">PDF</a>
<a href="#">W215T</a>	\$52.00	215T/TC	15	<a href="#">MTCP2-005-3BD12</a> <a href="#">MTCP2-010-3BD18(C)</a> <a href="#">MTCP2-010-3BD36</a> <a href="#">MTSP-005-3BD12</a> <a href="#">MTSP-010-3BD18</a>	<a href="#">140820.00</a> <a href="#">140821.00</a>		<a href="#">Y996</a> <a href="#">Y544(-A772)</a> <a href="#">Y547(-A772)</a> <a href="#">E2018</a> <a href="#">E2014A</a> <a href="#">E2018A</a> <a href="#">SY069</a>	-	<a href="#">GT0019A</a> <a href="#">GT1019A</a> <a href="#">GT1218A</a> <a href="#">GT1219A</a>	<a href="#">PDF</a>
<a href="#">W254T</a>	\$71.00	254T/TC	18	<a href="#">MTCP2-7P5-3BD12</a> <a href="#">MTCP2-015-3BD18(C)</a> <a href="#">MTCP2-015-3BD36</a> <a href="#">MTSP-015-3BD18</a>	-		<a href="#">Y546(-A772)</a> <a href="#">Y549(-A772)</a>	-	<a href="#">GT0059</a> <a href="#">GT1022A</a> <a href="#">GT1222A</a>	<a href="#">PDF</a>

\* IronHorse MTR2 56HC motors have double-punched bases to fit on slide base [MTA-BASE-W56](#).

# STABLE™ Motor Slide Bases

STABLE Motor Slide Bases for 3-Phase Motors										
Part Number (MTA-BASE- xxx)	Price	Fits Frame Type	Product Wt. (lb)	Fits Motor						Drawing Links
				IronHorse	Leeson®	WEG (Part number ending in...)	Marathon			
					WashGuard®		microMAX, Max+, Black Max, Blue Max, SyMAX	XRI GP & NEMA Premium, Jet Pump	Globetrotter	
<a href="#">W256T</a>	\$71.00	256T/ TC	19	MTCP2-010-3BD12 MTCP2-020-3BD18(C) MTCP2-020-3BD36 MTSP-020-3BD18	-		Y548(-A774) Y552	-	GT0062 GT1025A GT1225A	<a href="#">PDF</a>
<a href="#">W284T</a>	\$79.00	284T/ TC	20	MTCP2-015-3BD12 MTCP2-025-3BD18(C)	-		-	-	GT0065 GT1028A	<a href="#">PDF</a>
<a href="#">W286T</a>	\$79.00	286T/ TC	21	MTCP2-020-3BD12 MTCP2-030-3BD18(C)	-		-	-	GT0067 GT1031A	<a href="#">PDF</a>
<a href="#">W324T</a>	\$116.00	324T/ TC	30	MTCP2-040-3BD18(C)	-		Y571(-A774) Y513(-A775)	-	GT0073 GT1034A	<a href="#">PDF</a>
<a href="#">W326T</a>	\$116.00	326T/ TC	31	MTCP2-050-3BD18(C)	-		Y572(-A774) Y514(-A775)	-	GT0077 GT1037A	<a href="#">PDF</a>
<a href="#">W364T</a>	\$158.00	364T/ TC	43	MTCP2-060-3BD18(C)	-		Y573(-A774) Y515(-A775)	-	GT1040A	<a href="#">PDF</a>
<a href="#">W365T</a>	\$158.00	365T/ TC	43	MTCP2-075-3BD18(C)	-		Y574(-A774) Y516(-A775)	-	GT1043A	<a href="#">PDF</a>
<a href="#">W404T</a>	\$193.00	404T/ TC	58	-	-		-	-	-	<a href="#">PDF</a>
<a href="#">W405T</a>	\$193.00	405T/ TC	60	MTCP2-100-3BD18(C)	-		Y575(-A774) Y517(-A775)	-	GT1046A	<a href="#">PDF</a>
<a href="#">W444T</a>	\$219.00	444T	63	MTCP2-125-3BD18	-		-	-	GT1049A	<a href="#">PDF</a>
<a href="#">W445T</a>	\$219.00	445T	65	MTCP2-150-3BD18	-		-	-	GT1052A	<a href="#">PDF</a>
<a href="#">W447T</a>	\$288.00	447T	89	MTCP2-200-3BD18	-		-	-	GT1055A	<a href="#">PDF</a>
<a href="#">W449T</a>	\$288.00	449T	94	MTCP2-250-3D18 MTCP2-300-3D18	-		-	-	-	<a href="#">PDF</a>

\* IronHorse MTR2 56HC motors have double-punched bases to fit on slide base [MTA-BASE-W56](#).

# STABLE™ Motor Slide Bases

## Mounting Slide Bases for 56 to 215T NEMA Motors Features

STABLE Motor Slide Bases for 1-phase Motors									
Part Number	Price	Fits Frame Type	Product Wt. (lb)	Fits Motor					
				IronHorse	Leeson®	Marathon			
					Washguard®	Marathon DP GP (NEMA Service Factor)	Marathon DP Air Compressor	Fan & Blower	Marathon TE GP 4-in-1
<a href="#"><u>MTA-BASE-W56</u></a>	\$14.00	56*	2.8	MTR2-xxx-1AB18 MTR2-xxx-1AB36 MTPM-xxx-1L18 MTPM-xxx-1M18	112431.00	<a href="#"><u>C158A</u></a>	D010 C169 C704 D017	<a href="#"><u>C216</u></a>	<a href="#"><u>G570</u></a>
					112527.00	<a href="#"><u>G915A</u></a>		<a href="#"><u>D311</u></a>	
					112528.00	<a href="#"><u>C175A</u></a>		<a href="#"><u>C1153</u></a>	<a href="#"><u>G571</u></a>
					112529.00	<a href="#"><u>C167A</u></a>		<a href="#"><u>C1155</u></a>	<a href="#"><u>D312</u></a>
					113583.00	<a href="#"><u>C179A</u></a>		<a href="#"><u>B319</u></a>	<a href="#"><u>G572</u></a>
					114311.00	<a href="#"><u>G937A</u></a>		<a href="#"><u>D118</u></a>	<a href="#"><u>D313</u></a>
					114313.00	<a href="#"><u>C185A</u></a>		<a href="#"><u>C1158</u></a>	<a href="#"><u>G573</u></a>
					114317.00	<a href="#"><u>C187A</u></a>		<a href="#"><u>C235</u></a>	<a href="#"><u>D314</u></a>
					191475.00	<a href="#"><u>C193A</u></a>		<a href="#"><u>D115</u></a>	<a href="#"><u>G574</u></a>
					191477.00	<a href="#"><u>E261A</u></a>		<a href="#"><u>C1160</u></a>	<a href="#"><u>D315</u></a>
					191479.00	<a href="#"><u>E268A</u></a>		<a href="#"><u>C1161</u></a>	<a href="#"><u>G575</u></a>
						<a href="#"><u>EG277A</u></a>		<a href="#"><u>B352</u></a>	<a href="#"><u>D316</u></a>
					<a href="#"><u>MTA-BASE-W143T</u></a>	\$26.00		143T / TC	4.6
<a href="#"><u>MTA-BASE-W145T</u></a>	\$26.00	145TC / TC	5.1	-	-	<a href="#"><u>C191</u></a> <a href="#"><u>I127</u></a> <a href="#"><u>C194</u></a>	-	-	-
<a href="#"><u>MTA-BASE-W182T</u></a>	\$35.50	182T / TC	9.2	-	-	-	-	-	-
<a href="#"><u>MTA-BASE-W184T</u></a>	\$35.50	184 / TC	10	MTF-00x-1C18	-	-	<a href="#"><u>Z502</u></a>	-	-
<a href="#"><u>MTA-BASE-W213T</u></a>	\$52.00	213T / TC	13	-	-	-	-	-	-
<a href="#"><u>MTA-BASE-W215T</u></a>	\$52.00	215T T TC	15	-	-	-	-	-	-

\* IronHorse MTR2 56HC motors have double-punched bases to fit on slide base [MTA-BASE-W56](#).