


IDEM IDIS Interlock Safety Switches

IDIS Series Housing

- Tongue (key) (IDIS-1) or lever hinge (IDIS-2) interlock operated
- 90 degree adjustable head
- One 1/2 in. NPT female conduit opening

- 22 mm mounting profile
- Standard and compact housings
- Force guided NC contacts 
- Purchase actuating key separately (See accessories)

See electrical specifications later in this section.

IDEM IDIS-1 Tongue (Key) Interlock Safety Switches

Part Number	Price	Body Material	Head Material	Weight (lbs)	Actuator Travel / Force for Positive Opening	Contact Configuration	Dimensions
<u>IDIS-190051</u>	\$34.00	Plastic	Plastic	0.35	6mm/12N	1 N.O., 2 N.C. Slow action	Figure 1
<u>IDIS-190055</u>	\$34.00					3 N.C. Slow action	Figure 1
<u>IDIS-190059</u>	\$34.00					1 N.O., 1 N.C. Snap action	Figure 1

IDIS-190051



IDEM IDIS-2 Hinge Interlock Safety Switches

Part Number	Price	Body Material	Head Material	Weight (lbs)	Actuator Rotation / Force for Positive Opening	Contact Configuration	Dimensions
<u>IDIS-192002</u>	\$31.50	Plastic	Plastic	0.35	7 degrees / 0.5N	1 N.O., 2 N.C. Slow action	Figure 2
<u>IDIS-192005</u>	\$31.50					3 N.C. Slow action	Figure 2
<u>IDIS-192008</u>	\$31.50					1 N.O., 1 N.C. Snap action	Figure 2

IDIS-192002



Dimensions

mm [in]

Figure 1

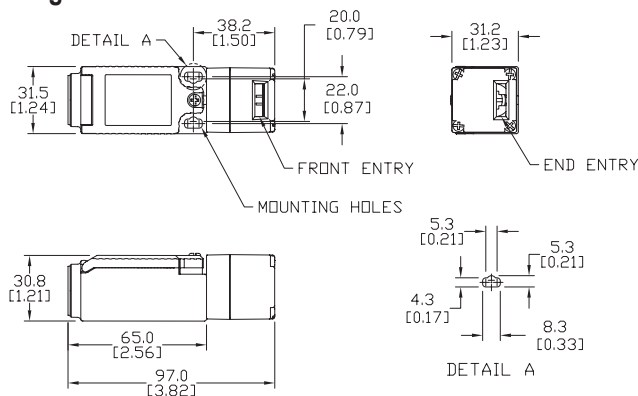
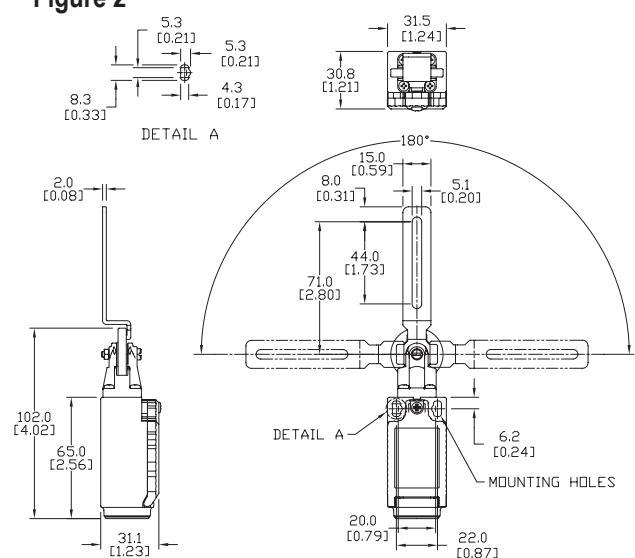


Figure 2



IDEM Interlock Safety Accessories

Actuator Keys For Use With IDIS-1



- All keys are 316 stainless steel
- Flexible key option available

**140103****140104****140105**

IDEM Interlock Safety Switch Actuator Tongue (Keys)

Part Number	Price	Description	Minimum Entry Radius	Weight (lb [g])	Drawings
<u>140103</u>	\$10.50	14.4 mm mounting hole spacing, 90° bent stainless steel key/mounting tab	175mm	0.03 [13.6]	<u>PDF</u>
<u>140104</u>	\$10.50	14.4 mm mounting hole spacing, straight stainless steel key/mounting tab	175mm	0.03 [13.6]	<u>PDF</u>
<u>140105</u>	\$19.50	40mm mounting hole spacing, stainless steel key with polyester flexible mounting tab	100mm	0.06 [27.2]	<u>PDF</u>

IDEM Interlock Safety Switches Specifications



Specifications							
	IDIS	INCH/MK1	HC	KM	KP/K-SS	K-15	GLx
Safety Classification and Reliability Data							
Switching Reliability (B10 _d)	2.5 x 10 ⁶ operations at 100mA load						1.5 x 10 ⁶ operations at 100mA load
ISO 13849-1	Up to PLe depending upon system architecture						
EN 62061	Up to SIL3 depending upon system architecture						
Safety Data - Annual Usage	8 cycles per hour / 24 hours per day / 365 days						
Agency Approvals	cULus (E258676), CE						cULus (E258676), CE, TUV
Electrical and General Specifications							
Conductor Sizes	16-12 AWG (1.5 to 2.5 mm ²)						
Utilization Category	AC15, A300, 3A						
Thermal Current	10A						
Short Circuit Overload Protection	External 10A Fast Acting recommended						
Rated Insulation Voltage	600VAC				500VAC		
Contact Terminals	Stainless steel (Snap action plated brass); Max conductor 1.5 m ² (IDIS), 2.5 m ² (KM, K/K-15); 1 N•m [0.74 lb•ft] torque						
Maximum Switching Current	2.5A @24 VDC 6A @ 120VAC, 3A @ 240VDC (720VA Break)						
Maximum Approach/Withdrawal Speed	600mm/s [23.6 in/s]						NA
Enclosure Protection	IP67 (IP69K on all models with both stainless steel head and body)						
Operating Temperature	-25°C to 80°C [-13°F to 176°F]						
Vibration	IEC 68-2-6, 10Hz to 55Hz + 1Hz						10Hz to 500Hz 0.35 mm [0.014 in]
Lid Screws/Torque	Plated brass 1 N•m [0.74 lb•ft]	Stainless steel T20 Torx 1 N•m [0.74 lb•ft]	Stainless steel 1 N•m [0.74 lb•ft]				Stainless steel T20 Torx 1.5 N•m [1.11 lb•ft]
Recommended Mounting Screws/ Torque	M4 1.5 N•m [1.11 lb•ft]	M5 4N•m [2.95 lb•ft]	M4 1.5 N•m [1.11 lb•ft]		M5 4N•m [2.95 lb•ft]		
Head Screws/Torque	Stainless steel, except snap (plated brass) 1 N•m [0.74 lb•ft]	Stainless steel T20 Torx 1 N•m [0.74 lb•ft]	Stainless steel; 1 N•m [0.74 lb•ft]				

Safety Products



Warning: Safety products sold by AutomationDirect are Safety components only. The purchaser/installer is solely responsible for the application of these components and ensuring all necessary steps have been taken to assure each application and use meets all performance and applicable safety requirements and/or local, national and/or international safety codes as required by the application. AutomationDirect cannot certify that our products, used solely or in conjunction with other AutomationDirect or other vendors' products, will assure safety for any application. Any person using or applying any products sold by AutomationDirect is responsible for learning the safety requirements for their individual application and applying them, and therefore assumes all risks, and accepts full and complete responsibility, for the selection and suitability of the product for their respective application.

AutomationDirect does not provide design or consulting services, and cannot advise whether any specific application or use of our products would ensure compliance with the safety requirements for any application.